



(19) **United States**

(12) **Patent Application Publication**
Ho et al.

(10) **Pub. No.: US 2009/0218885 A1**
(43) **Pub. Date: Sep. 3, 2009**

(54) **SLOPE CONTROL DEVICE CAPABLE OF PREDICTING UNIFORM-CURRENT-SHARING LEVEL AND METHOD THEREOF**

Publication Classification

(51) **Int. Cl.**
H02J 3/46 (2006.01)
G05F 1/63 (2006.01)
(52) **U.S. Cl.** **307/24; 323/298**
(57) **ABSTRACT**

(75) **Inventors:** **Hsin-Hsin Ho**, Taipei County (TW); **Ke-Horng Chen**, Taipei County (TW); **Chun-Yu Hsieh**, Taichung City (TW)

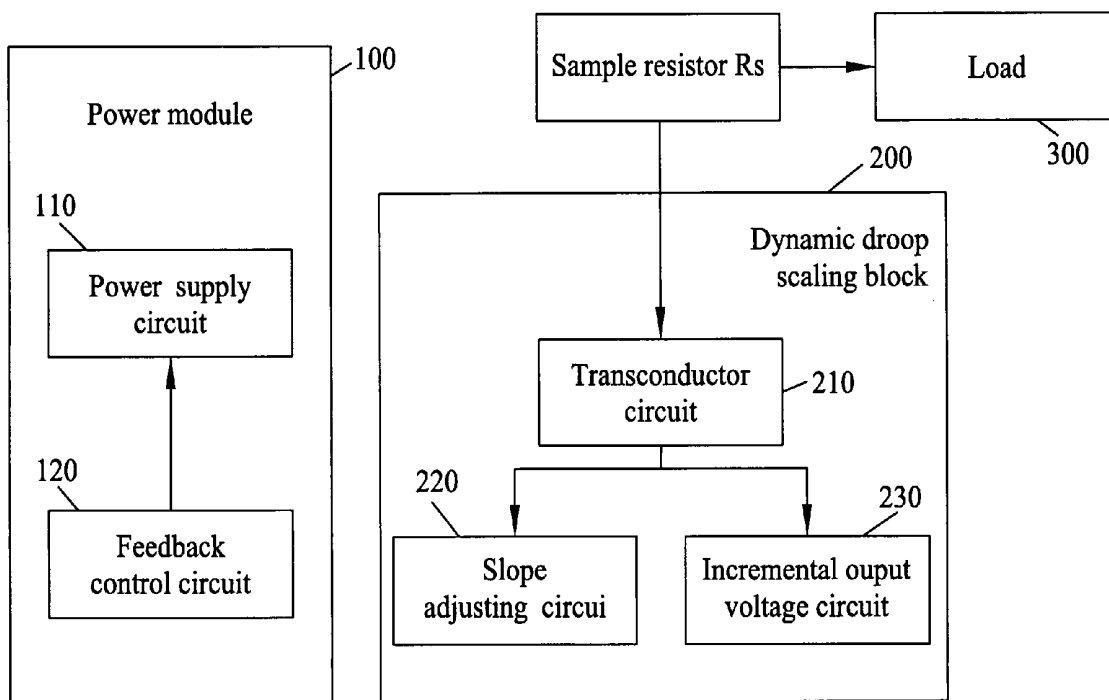
Correspondence Address:
BACON & THOMAS, PLLC
625 SLATERS LANE, FOURTH FLOOR
ALEXANDRIA, VA 22314-1176 (US)

(73) **Assignee:** **NATIONAL CHIAO TUNG UNIVERSITY**, Hsinchu City (TW)

(21) **Appl. No.:** **12/071,956**

(22) **Filed:** **Feb. 28, 2008**

The present invention discloses a slope control device capable of predicting uniform-current-sharing level and method thereof which can be applied in a redundancy or distributed power system for providing better uniform-current-sharing ability. The device comprises a high linearity transconductor circuit, a slope adjusting circuit and an incremental output voltage circuit. The invention applies either a transductor parameter or a feedback resistor to increase the droop gain and therefore the current deviation between two power supply modules is reduced. The invention further raises the output voltage step by step to ensure that the output voltage meet the requirement of allowable minimum output voltage according to increment of load current.



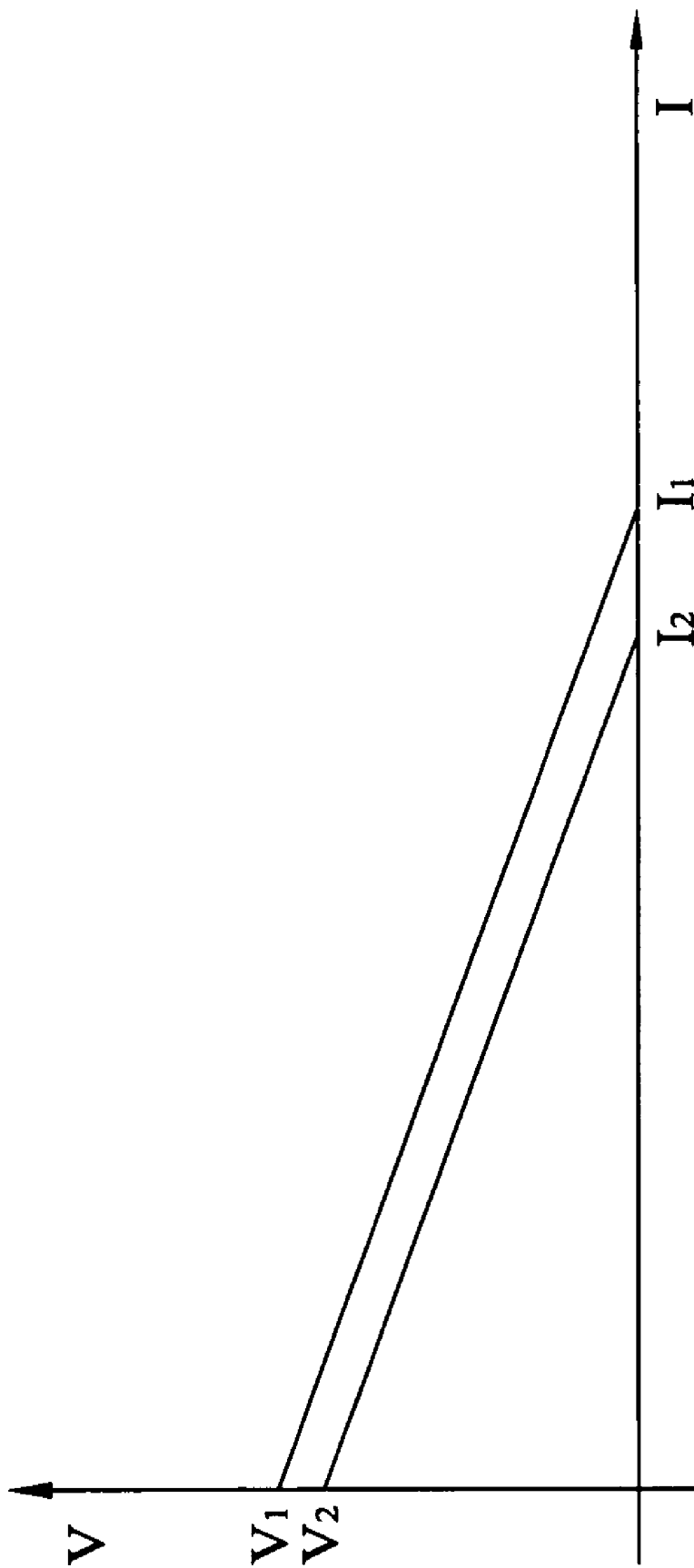


Fig. 1 (Prior art)

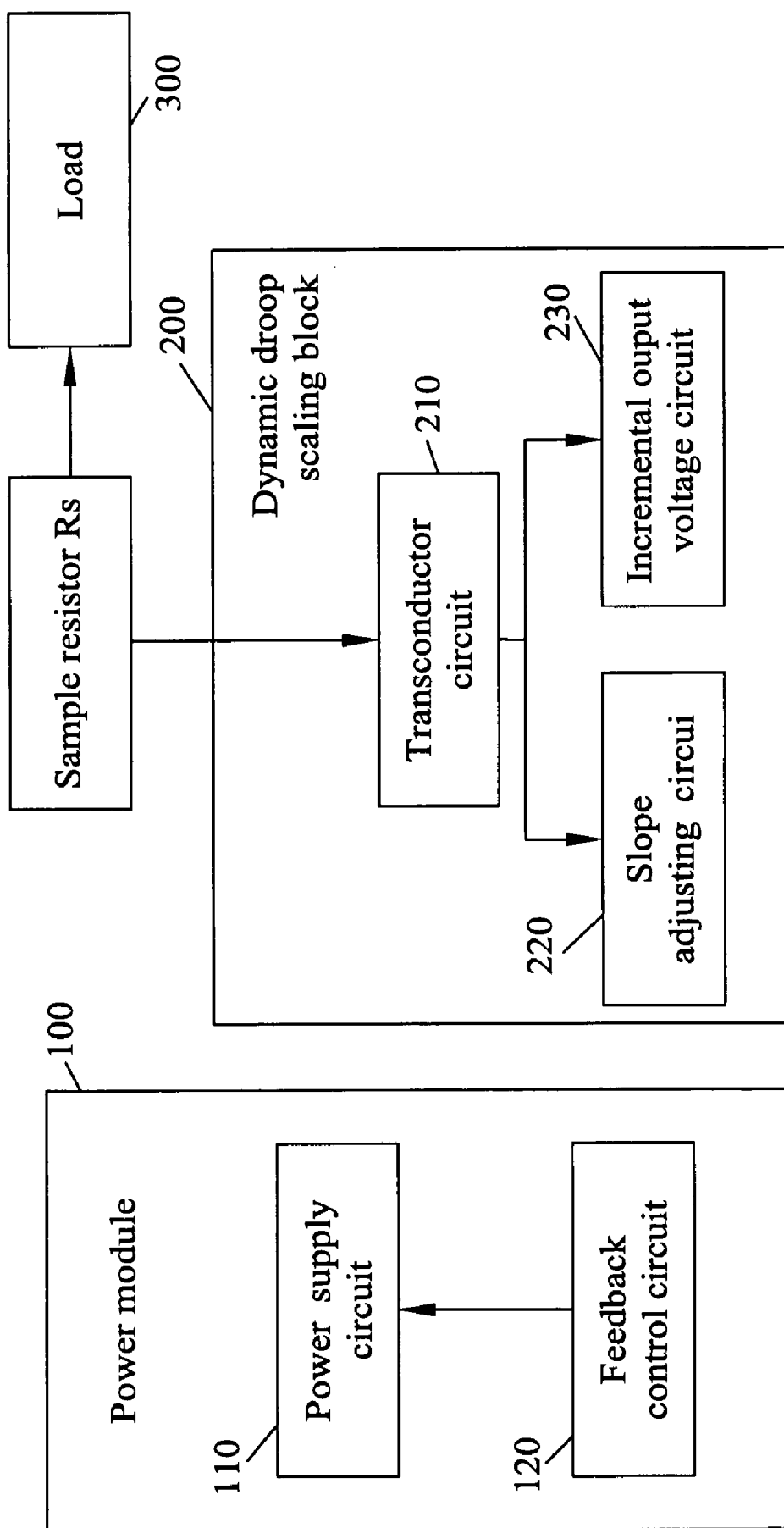


Fig.2

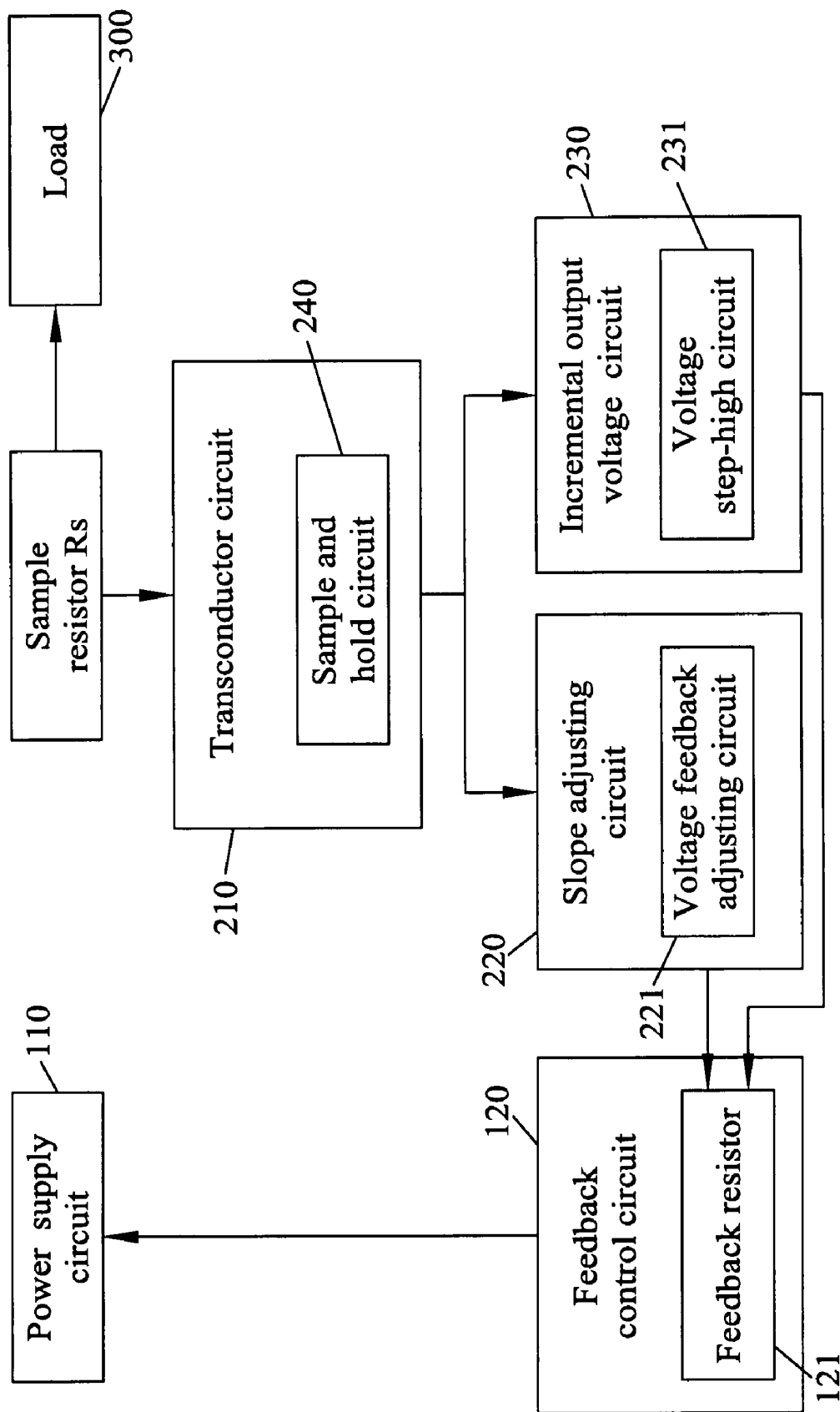


Fig.3

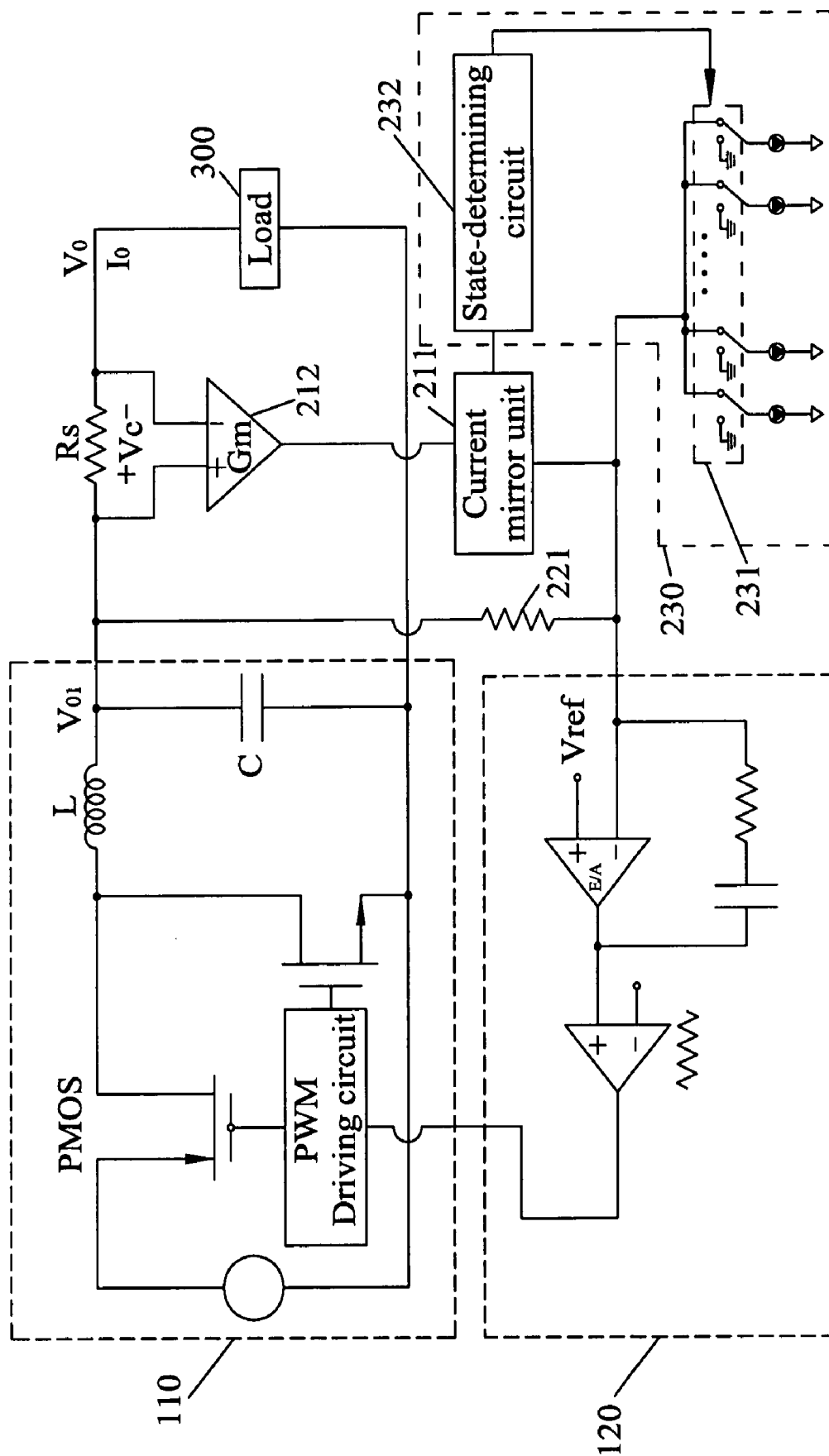


Fig.4

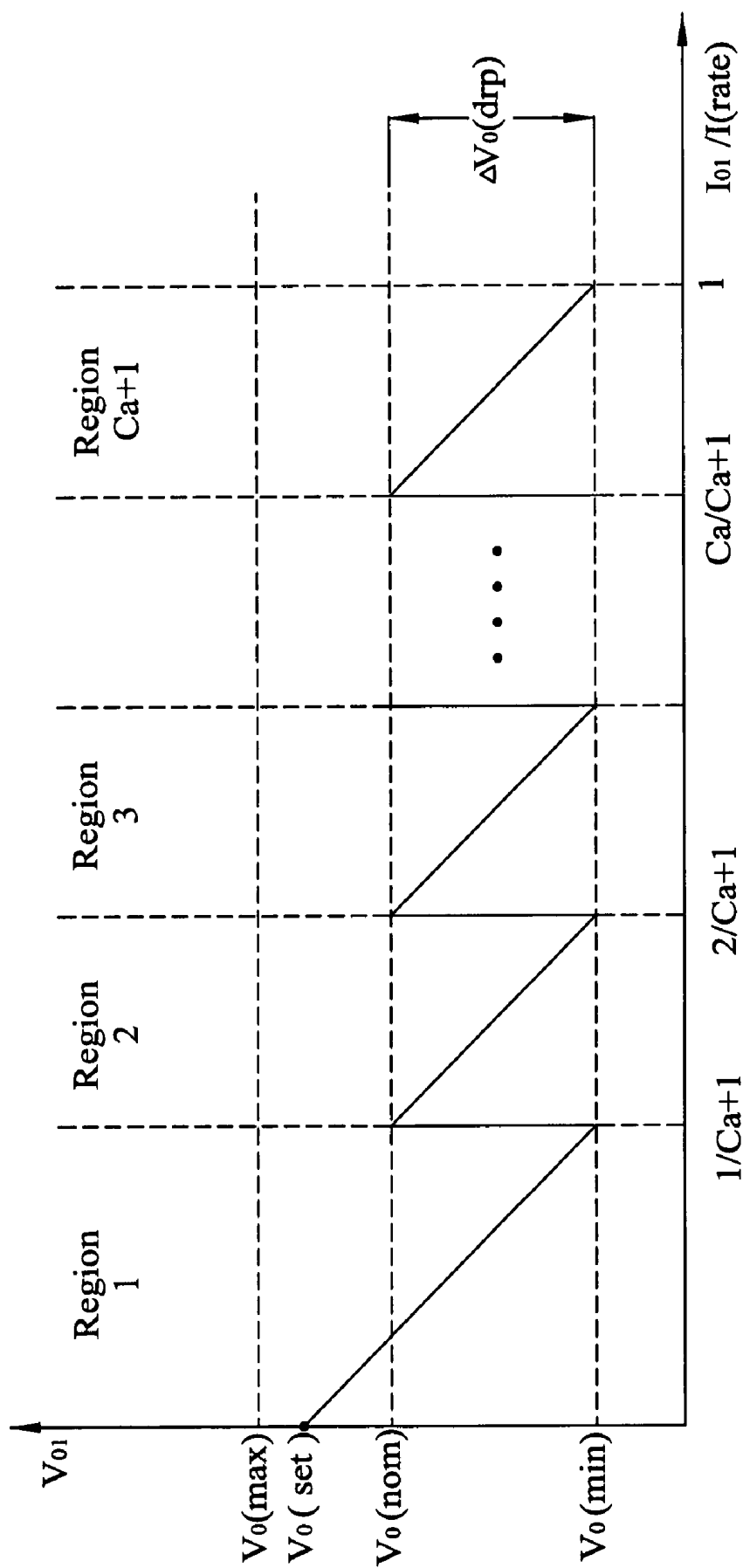


Fig.5

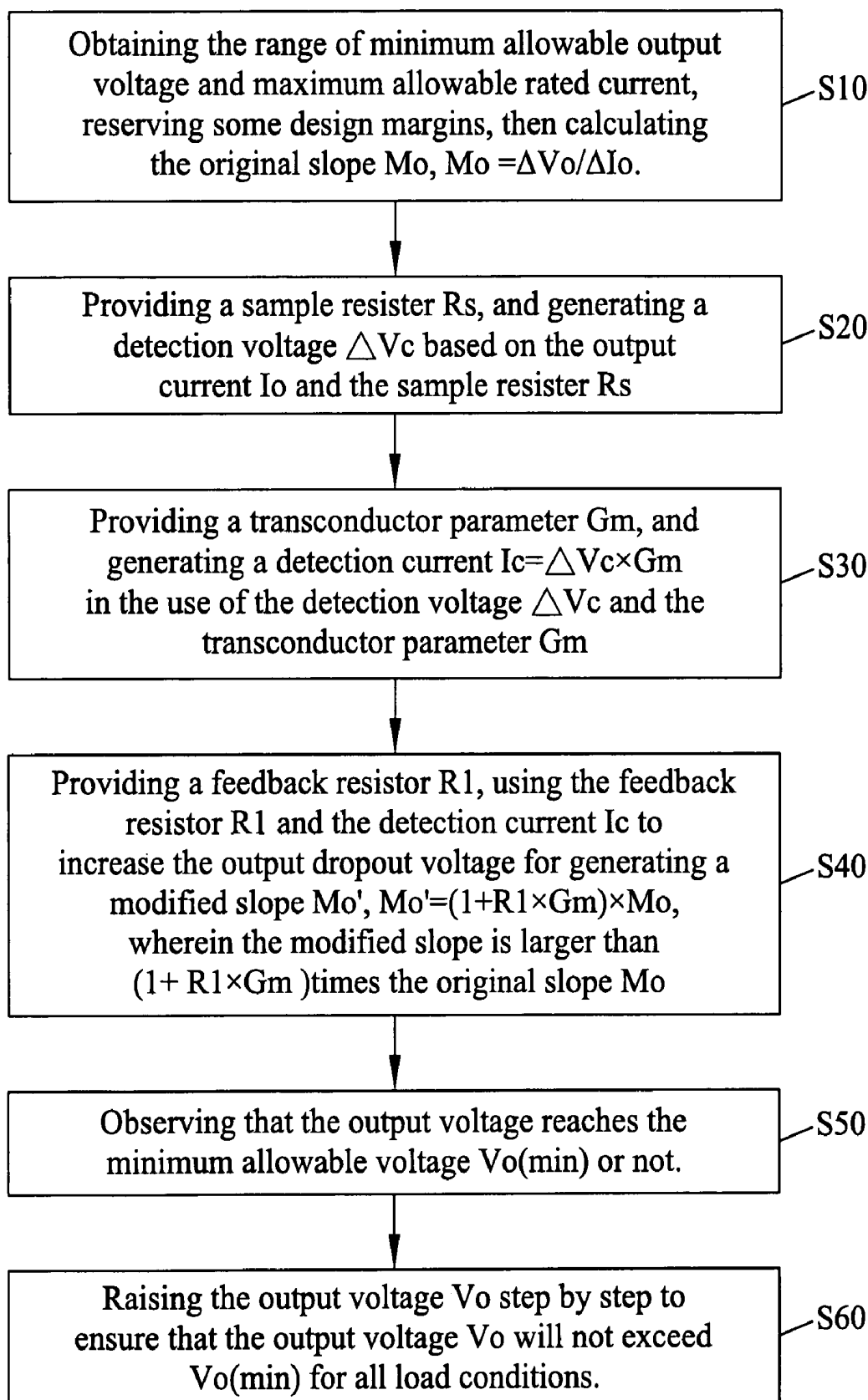


Fig.6

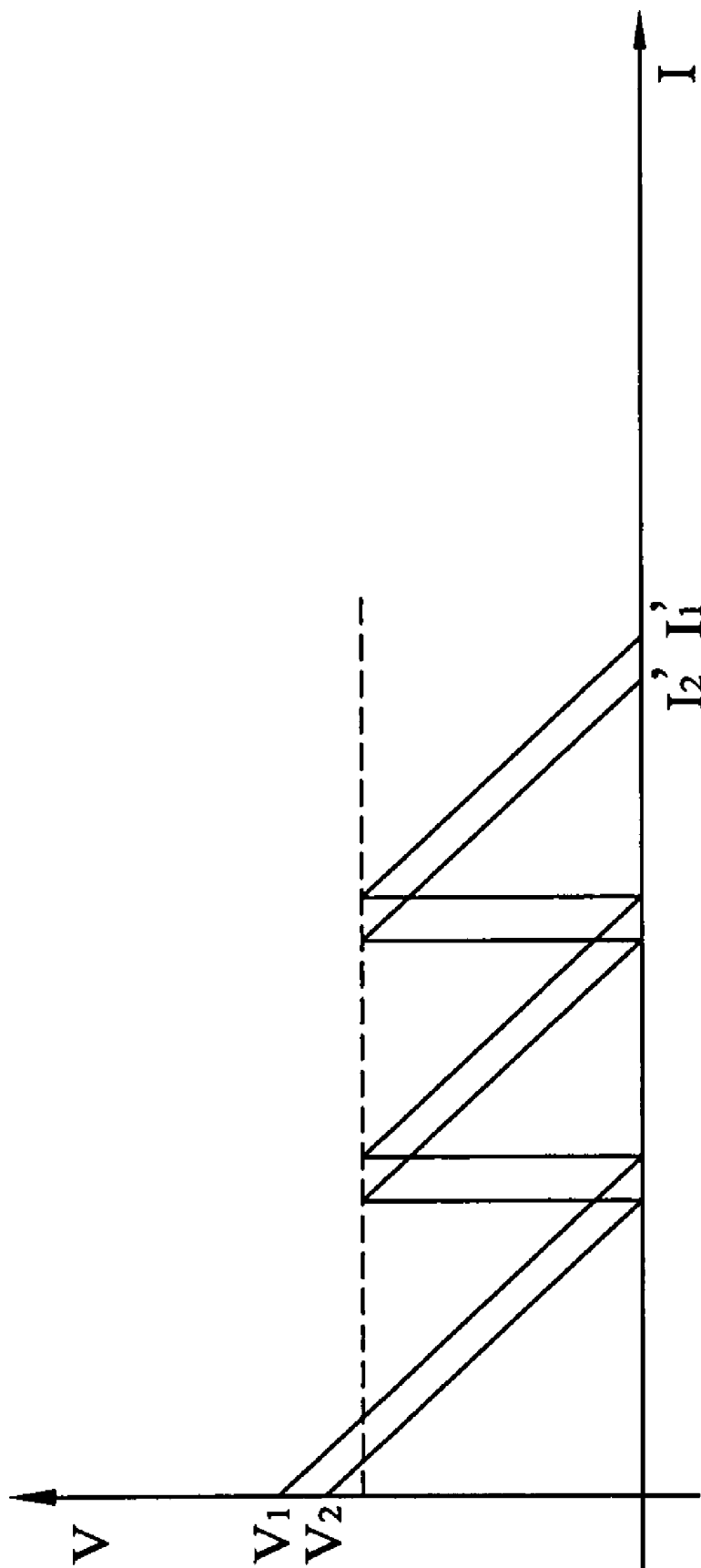


Fig.7

**SLOPE CONTROL DEVICE CAPABLE OF
PREDICTING
UNIFORM-CURRENT-SHARING LEVEL AND
METHOD THEREOF**

BACKGROUND OF THE INVENTION

[0001] (a) Field of the Invention

[0002] The invention is related to a slope control device and method thereof, in particularly to a slope control device capable of predicting uniform-current-sharing level and method thereof applied in a distributed power system.

[0003] (b) Description of the Prior Art

[0004] Recently, the distributed power system is increasingly applied in the communication system and the computer server. The distributed power system comprises several small capability power modules which are connected in parallel for supplying the power to the load. Compared to the central power system, the distributed power system has several advantages, including:

[0005] 1. Capability of using modulized power source: When the central power system is used for supplying power, it will take much effort to redesign the power system if the customer changes the power requirement. However, because of modulized design of the distributed power system, the user can adjust the number of parallel connected power modules to keep up with the increasing load current requirement. Besides, when one of power modules of the distributed power system is shortened or breakdown, the faulty modules can be exchanged without system interruption.

[0006] 2. Capability of reducing the current stress in single power module: The distributed power system can averagely distribute the output current to the paralleled power modules. Therefore, the current stress in each module can be reduced and hence the efficiency and volume of the distributed power system can be improved. In other word, the single power module can be implemented by the power units with lower rated voltage and current.

[0007] 3. Efficient heat management: Generally speaking, the life time of the electronic elements reduces half when the temperature of the junctions in the electronic elements increases 10° C. The parallel connected power system ensures equal distribution of the output current and further results in uniform decentralized heat dissipation. By equally delivering the power dissipation among a large number of power components and over a greater surface area, thermal management is effectively achieved and the reliability of the system is greatly improved.

[0008] 4. Capability of implementing redundancy circuit architecture: The distributed power system is easy to achieve the redundancy circuit structure in which N+1 power modules are connected in parallel. In redundant systems, one power module is at least reserved and it provides extra output load current. The benefits of such structure include reducing total power dissipation and improving the maintainability when the failure occurs. In other words, the redundancy circuit structure is very robust and is suitable for important servers or apparatus.

[0009] Currently, there are two methods applied on the distributed power system for distributing the current averagely. One is the droop method and the other is the active current-sharing method. The major difference between the droop method and the active current-sharing method is that the paralleled power modules applied the latter method need extra pinouts. These pinouts are used for enabling current

sharing control circuits of paralleled power modules to communicate the information of each output current. The average current information is carried between the modules by these pinouts and hence these are so called as current-sharing bus, abbreviated CS bus. The CS bus provides a common reference to the paralleled power modules, and hence each module adjusts its output current based on the common reference. However, the droop method does not require the average current information and therefore it needs no interconnection between modules.

[0010] In conclusion, the benefits of the droop method are simple design, easy extension, needless extra connection between power modules, high modulability and high reliability. The benefits of the active current-sharing method are better load adjustability and better uniform-current-sharing ability.

[0011] FIG. 1 illustrates a schematic view of the output voltage and the output current of the droop method in accordance with the prior art. When applying the droop method on the distributed power system, the output voltage drops as the load current increases. The current sharing mechanism of this method relies on the slope of the load regulation characteristic of the parallel connected modules. In FIG. 1, even if the output voltage-current slopes of two different modules are the same, the current I1 and the current I2 differs from each other since there is minor difference between the elements of the power modules such as the reference voltage at no load condition.

[0012] As illustrated in FIG. 1, the distribution of current is more uniform when the difference between the reference voltages at no load condition is smaller. Besides, even if the difference of each reference voltage is the same, raise of the output voltage-current slopes is also contributive to improve the current derivation between two power supply modules. However, owing to the trade-off between error percentages of current sharing and output voltage variation, conventional droop technique can not provide good load regulation and current balance at the same time. The slope of the traditional droop method is limited by the maximum output voltage variation specification, and can not be raised as high as expected.

[0013] In view of the drawbacks of the prior art, the inventor of the present invention based on years of experience in the related industry to conduct extensive researches and experiments, and finally developed a slope control device capable of predicting uniform-current-sharing level and method thereof in accordance with the present invention to overcome the aforementioned drawbacks.

SUMMARY OF THE INVENTION

[0014] Therefore, it is one of objective of the present invention to provide a slope control device capable of predicting uniform-current-sharing level and method thereof to overcome the poor uniform-current-sharing ability of the droop method in accordance with the prior art.

[0015] Based on the objective of the present invention, a slope control device capable of predicting uniform-current-sharing level is provided. The slope control device is applied for a power system operated with the droop method. The slope control device comprises a high linearity transconductor, a slope adjusting circuit and an incremental output voltage circuit. The output current of the power system is passed through a sample resistor for generating a detection voltage. The transconductor transforms the detection voltage into a

detection current, and send it to the slope adjusting circuit and incremental output voltage circuit.

[0016] The slope adjusting circuit adjusts the slope of the load regulation characteristic of the parallel connected modules based on the information of the detection current. The incremental output voltage circuit raises the output voltage step by step based on the information of the detection current and compensated the extra output dropout voltage automatically according to the steeper slope value of the novel method.

[0017] The present invention provides a slope control method capable of predicting uniform-current-sharing level for decreasing the difference between the output currents supplied by a plurality of power modules. First, an output voltage and an output current are obtained from the power module for calculation of an original slope. Then, a sample register is used to generate a detection voltage from the output current, and uses a high linearity transconductor to transform the detection voltage into the detection current. Then a feedback resistor and the detection current are used to adjust the original slope. Finally, the method raises the output voltage step by step based on the adjusted slope to ensure that the output voltage is located at the tolerable range of the system.

[0018] As mentioned above, the slope control device capable of predicting uniform-current-sharing level and method in accordance with the present invention can keep the output voltage in the tolerable range of the system and decreases the difference of the output currents by increasing the slope, and therefore enhance the average-current-sharing ability of the distributed power system.

BRIEF DESCRIPTION OF THE DRAWINGS

[0019] FIG. 1 is the sketch map of the output voltage and the output current of the prior.

[0020] FIG. 2 is the function block of the slope control device capable of predicting uniform-current-sharing level of the present invention.

[0021] FIG. 3 is the detailed function block of the slope control device capable of predicting uniform-current-sharing level of the present invention.

[0022] FIG. 4 is the circuit sketch diagram of the embodiment of the slope control device capable of predicting uniform-current-sharing level of the present invention.

[0023] FIG. 5 is the sketch map of the output voltage and the output current of the embodiment of the slope control device capable of predicting uniform-current-sharing level of the present invention.

[0024] FIG. 6 is the flow map of the slope control method capable of predicting uniform-current-sharing level of the present invention.

[0025] FIG. 7 is the sketch map of the output voltage and the output current of the embodiment of the slope control method capable of predicting uniform-current-sharing level of the present invention.

DETAILED DESCRIPTION OF THE PREFERRED EMBODIMENTS

[0026] Please referring to FIG. 2 for the function block diagram of the slope control device capable of predicting uniform-current-sharing level in accordance with the present invention, the power module 100 comprises a power supply circuit 110 and a feedback control circuit 120. Each power module 100 are connected with the load 300 through a sample resistor R_s . The dynamic droop scaling block 200 comprises

a high linearity transconductor 210, a slope adjusting circuit 220 and an incremental output voltage circuit 230. The power supply circuit 110 provides an output voltage and an output current to the load 300 based on the signal from the feedback control circuit 120. Meanwhile, the transconductor 210 of the dynamic droop scaling block 200 detects and samples the output current. Then the sampled result is sent to the slope adjusting circuit 220 and the incremental output voltage circuit 230 respectively. The purpose of the slope adjusting circuit 220 is for increasing the droop gain based on the slope of the load regulation characteristic of the parallel connected modules 100. The incremental output voltage circuit 230 is for pulling up the output voltage step by step to ensure that the output voltage is still located under the output voltage variation specification.

[0027] FIG. 3 illustrates a detailed function block diagram of the slope control device capable of predicting uniform-current-sharing level of the present invention. As mentioned above, the transconductor circuit 210 comprises a sample and hold circuit 240. The sample and hold circuit 240 is used for duplicating the detected current from the transconductor circuit 210, and providing the currents to the slope adjusting circuit 220 and the incremental output voltage circuit 230 respectively. The slope adjusting circuit 220 applies a voltage feedback adjusting circuit 221 to multiply the detection current by various parameters and feeds the multiplied current to the feedback control circuit 120. Besides, the feedback resistor 121 of the feedback control circuit 120 can also be adjusted for raising the output voltage-current slope of the power module 100.

[0028] While the modified slope is generated instead of the original one, the voltage variation of the power module 100 will exceed the allowable minimum output value at rated current load. Therefore the voltage step-high circuit 231 is triggered to pull up the output voltage when the output voltage reaches the minimum voltage margin of the system, in order to make sure that the output voltage will not exceed the allowable minimum value for all load conditions.

[0029] FIG. 4 illustrates a circuit diagram of the embodiment of the slope control device capable of predicting uniform-current-sharing level in accordance with the present invention. In the embodiment, the power supply circuit 110 and the feedback control circuit 120 are familiar for those who work in the field, thus the detailed operating principle will not be elaborated herein. In the embodiment, the power supply circuit 110 is a DC to DC voltage switching regulator. A power transistor is applied in the output terminal of the power supply circuit 110 for preventing the individual power supply circuit 110 from burning out because of short circuits.

[0030] In FIG. 4, a power transistor is added in the output terminal of each power supply circuit 110. The equivalent on-resistance of the power transistor can serve as the sample resistor R_s . Each power supply circuit 110 is connected to the common output terminal V_o via the sample resistor R_s for supplying the output current to the load 300. In the embodiment, a current mirror unit 211 is followed by a transconductor circuit 212. The transconductor circuit 212 detects the voltage $A V_c$ across the sample resistor R_s . The voltage ΔV_c is given by multiplying the output current I_o by the sample resistor R_s . The output current I_c of the transconductor circuit 212 is then sent to the feedback resistor R_1 , a part of the voltage feedback adjusting circuit 221 in the embodiment, and is flowed through resistor R_1 to generate a voltage drop ΔV_d .

[0031] Suppose the amplifier is ideal, the voltage gain is infinite. Therefore the negative terminal of the error amplifier is close to the value of V_{ref} . If the power supply circuit 100 operates at no load condition, the value of the common output terminal V_o follows the maximum reference voltage of each power module 100 in this case. For instance, V_{o1} is the maximum output voltage of power module 1 at no load, thus the output voltage V_o is equal to V_{o1} .

[0032] While the output current I_o is increasing, the detection voltage V_c generated by passing the output current I_o through the sample resistor R_s is also increased. And therefore the output current I_c of the transistor circuit 212 is also increased. Because the negative terminal of the error amplifier is close to the value of V_{ref} , the current generated by the transistor flows through the resistor R_1 to generate a voltage drop, which is equal to ΔV_d . The total voltage drop due to the increment of load current is the sum of ΔV_C and ΔV_d .

[0033] Based on the equivalence circuit model, the relationship of the output voltage V_o and the output current I_o can be described as:

$$V_o + I_o \times R_s \times (1 + g_m \times R_1) = V_{ref} \quad (1)$$

[0034] If an amplify parameter K_a is equals to $R_s \times (1 + g_m \times R_1)$ or $R_s \times (1 + C_a)$, then the equation (1) can be simplified into:

$$V_o = V_{ref} - I_o \times K_a = V_{ref} - I_o \times R_s \times (1 + g_m \times R_1) \quad (2)$$

[0035] The relationship of the output voltage V_o and the output current I_o of the traditional droop method is as following:

$$V_o + I_o \times R_s = V_{ref} \quad (3)$$

[0036] The equation mentioned above can be easily derived by masking the detection module 200 from FIG. 4 and using the equivalent circuit model. Therefore, the detailed operating principle will not be elaborate herein.

[0037] Comparing equation (2) with equation (3), we can easily understand that the modified slope M_o' is $(1 + C_a)$ time larger than the original slope by applying the slope control device in accordance with the present invention. Therefore, the difference between the output currents of the power modules 100 can be minimized $(1 + C_a)$ time than the prior art. The reason is simply described herein:

[0038] The difference between the output current I_{o1} of power module 1 and I_{o2} of power module 2 in the prior art is given as following:

$$V_{o1} = V_{ref} - I_{o1} \times R_s$$

$$V_{o2} = V_{ref} - I_{o2} \times R_s$$

$$\Delta V_o = V_{o1} - V_{o2} = \Delta I_o \times R_s$$

And the difference between the output currents I_{o1} and I_{o2} of the present invention is giving as following:

$$V_{o1} = V_{ref} - I_{o1} \times R_s \times (1 + g_m \times R_1)$$

$$V_{o2} = V_{ref} - I_{o2} \times R_s \times (1 + g_m \times R_1)$$

$$\Delta V_o = V_{o1} - V_{o2} = \Delta I_o \times R_s \times (1 + g_m \times R_1)$$

The result of the calculation mentioned above can be described as:

$$\Delta I_o(\max) = \Delta V_o(\max) / K_a \quad (4)$$

Wherein, the $\Delta V_o(\max)$ represents the maximum output voltage variation of each power module 100 for all load conditions.

[0039] FIG. 5 illustrates the schematic diagram of the output voltage and the output current of the embodiment of the slope control device capable of predicting uniform-current-sharing level in accordance with the present invention. The operating condition and theory mentioned above can be recognized in the region 1 of FIG. 5. Meanwhile, owing to the larger value of droop slope K_a , the error percentage of current-sharing performance is reduced by a factor $(1 + C_a)$. However, due to the steeper value of the modified slope, the voltage variation will exceed the allowable minimum output value $V_o(\min)$ at $I_o(\text{rate}) / (C_a + 1)$ and reach $(C_a + 1)$ times that of the original droop method. Therefore, within the range of minimum allowable output voltage and maximum allowable rated current, the incremental output voltage circuit is needed to raise the output voltage for every $I_o(\text{rate}) / (C_a + 1)$.

[0040] As illustrated in FIG. 4, the incremental output voltage circuit of the embodiment comprises a voltage step-high circuit 231 and a state-determining circuit 232. The voltage step-high circuit 231 can be implemented by a set of current mirror circuit array. As the state-determining circuit 232 is triggered, the switches of the current mirror circuit array were opened one by one, and the total current flowed through R_1 was increased step by step. When the output voltage V_o reaches the minimum output voltage value $V_o(\min)$, the state-determining circuit 232 is triggered and hence the output current from the current mirror circuit array is added up. As a result, the output voltage V_o is raised step by step for every multiple of $I_o(\text{rate}) / (C_a + 1)$. In this way, the output voltage will not exceed the allowable minimum output voltage for all load conditions.

[0041] In the other viewpoint, the curve of the output voltage V_o forms several transition points as the output current I_o is increasing with the modified slope M_o' . As illustrated in FIG. 5, the transition points are located at the $1/K_a$, $2/K_a$, ... and $(K_a - 1)/K_a$ time of the rated output current $I_o(\text{rate})$. The transition points also mean the suitable time that the voltage step-high circuit should be triggered. To sum up, the relationship between load current and output voltage is given as equation (5):

$$V_o = V_{ref} + \sum_{Ca=1}^N V_o(\text{drp}) - I_o \cdot C_a \quad (5)$$

[0042] There are $(C_a + 1)$ regions in FIG. 5, and the output voltage is raised about $\Delta V_o(\text{drp})$ for every $I_o(\text{rate}) / (C_a + 1)$.

[0043] As seen in FIG. 5, $V_o(\text{nom})$ is the nominal output voltage of the power module 100, and $V_o(\max)$ and $V_o(\min)$ represent the maximum and minimum output voltage allowed for the system respectively. $I_o(\text{rate})$ is the rated output current of the power module 100, and $\Delta V_o(\text{drp})$ is the output dropout voltage from no load, $I_o = 0A$, to full load, $I_o = I_o(\text{rate})$.

[0044] In conclusion, there is trade-off between error percentage of current sharing and output voltage variation in droop method. However, the slope control device capable of predicting uniform-current-sharing level of the present invention can solve the drawback of the poor uniform-current-sharing ability of the prior.

[0045] Please refer to FIG. 6 for a flow diagram of the slope control method capable of predicting uniform-current-sharing level of the present invention. The method includes the following steps of:

[0046] step S10: obtaining the range of minimum allowable output voltage and maximum allowable rated current, reserving some design margins, then calculating the original slope M_o , $M_o = \Delta V_o / \Delta I_o$.

[0047] step S20: providing a sample resistor R_s , and generating a detection voltage ΔV_c based on the output current I_o and the sample resistor R_s .

[0048] step S30: providing a transconductor parameter G_m , and generating a detection current $I_c = \Delta V_c \times G_m$ in the use of the detection voltage ΔV_c and the transconductor parameter G_m .

[0049] step S40: providing a feedback resistor R_1 , using the feedback resistor R_1 and the detection current I_c to increase the output dropout voltage for generating a modified slope M_o' , $M_o' = (1 + R_1 \times G_m) \times M_o$, wherein the modified slope is larger than $(1 + R_1 \times G_m)$ times the original slope M_o .

[0050] step S50: observing that the output voltage reaches the minimum allowable voltage $V_o(\min)$ or not.

[0051] step S60: raising the output voltage V_o step by step to ensure that the output voltage V_o will not exceed $V_o(\min)$ for all load conditions.

[0052] Besides, the variations of R_s values for different modules can be compensated by the term of $G_m R_1$. We do not need to put much effort on the selection of external components for whole multiple-supplies system.

[0053] In the embodiment of the slope control method capable of predicting uniform-current-sharing level of the present invention, a modified slope which is C_a times larger than the original slope is provided. Therefore, the error percentage of current-sharing performance is reduced by a factor $(1 + C_a)$.

[0054] FIG. 7 illustrates a schematic diagram of the output voltage and the output current of the embodiment of the slope control method capable of predicting uniform-current-sharing level in accordance with the present invention. The modified slope of the present invention is much sharper than the prior art, and the deviation of output currents I_1 and I_2 are smaller between two power supply modules. As a result, the uniform-current-sharing ability of the present invention is enhanced greatly than prior art.

What is claimed is,

1. A slope control device capable of predicting uniform-current-sharing level, for a power module applying with a droop method, and said power module having an original output voltage-current slope, and comprising a sample resistor, and said slope control device comprising:

a transconductor circuit, for generating a detection current based on a detection voltage on said sample resistor while said output current of said power module passing said sample resistor, and for outputting the information of said detection current;

a slope adjusting circuit, for adjusting said original slope into a modified slope based on said information of said detection current; and an incremental output voltage circuit; wherein while said output current is lower than said preset current value and said output voltage decreases to an output voltage minimum value due to the increasing of said output current and said modified slope, said incremental output voltage circuit pulls up

said output voltage based on said information to ensure that said output current is increased to approximate a preset current value.

2. The slope control device of claim 1, wherein said transconductor circuit comprises a transconductor.

3. The slope control device of claim 1, wherein said transconductor circuit further comprises a sample and hold circuit for sampling said detection current and generating said information.

4. The slope control device of claim 3, wherein said sample and hold circuit is a current mirror.

5. The slope control device of claim 1, wherein said slope adjusting circuit comprises a feedback resistor.

6. The slope control device of claim 1, wherein said incremental output voltage circuit is a voltage step-high circuit.

7. The slope control device of claim 1, wherein the value of said modified slope is larger than the value of said original slope, and the sign of said modified slope is equal to the sign of said original slope.

8. A slope control method capable of predicting uniform-current-sharing level, for reducing the current difference between a plurality of output currents of a plurality of power modules applying the droop method, and said slope control method including:

obtaining the range of minimum allowable output voltage and maximum allowable rated current, reserving some design margins, then calculating the original slope;

providing a sample register, and generating a detection voltage based on the output current and said sample resistor;

providing a transconductor parameter, and generating a detection current based on said detection voltage and said transconductor parameter;

providing a feedback resistor, using said feedback resistor and said detection current to increase the output dropout voltage for generating a modified slope;

observing that the output voltage reaches said minimum allowable voltage or not; and

raising said output voltage step by step to ensure that said output voltage will not exceed said minimum allowable voltage for all load conditions.

9. The slope control method of claim 8, further including a step of using said transconductor parameter and said feedback resistor to compensate said modified slope for unifying said plurality of power modules to make sure the values of the slopes of said plurality of power modules are equal to each other.

10. The slope control method of claim 8, further including a step of using said feedback resistor and said transconductor parameter for making said modified slope larger than said original slope a multiple parameter time, so as to reduce said current difference of said plurality of output currents said multiple parameter time.

11. The slope control method of claim 10, wherein the curve of said output voltage and said output current comprises a plurality of regions, and the number of said regions is direct proportion to said multiple parameter.

12. The slope control method of claim 8, wherein said power modules are applied in a redundancy or distributed power system, and said power system is for supplying a preset load current to a load, and said preset current value is the average value of dividing said preset load current by the number of said power modules.

13. The slope control method of claim 8, wherein the value of said modified slope is larger than the value of said original slope, and the sign of said modified slope is equal to the sign of said original slope.