

Time-multiplexed three-dimensional displays based on directional backlights with fast-switching liquid-crystal displays

Ko-Wei Chien and Han-Ping D. Shieh

An autostereoscopic display using a directional backlight with a fast-switching liquid-crystal (LC) display was designed and fabricated to obtain a better perception of 3D images by enhanced resolution and brightness. A grooved light guide in combination with an asymmetric focusing foil was utilized to redirect the emitting cones of light to the left and right eyes, respectively. By designing the groove structures of the focusing foil with rotation from -1.5° to 1.5° in the gradient and having the pitch ratio of the grooved light guide to the focusing foil of less than 3, the boundary angle then shifts from normal viewing and the moiré phenomenon can be suppressed. Cross talk of less than 6% and a LC response time of faster than 7.1 ms further improve the stereoscopic image perception. Additionally, 2D–3D compatibility is provided. © 2006 Optical Society of America

OCIS codes: 230.3720, 330.1400.

1. Introduction

As image display advances from monochromic to color, each development is driven by the pursuit of ever more natural visions. Therefore the stereoscopic display is seen to be a major advancement in providing human perception closer to reality. Autostereoscopic displays, which do not require a user to wear special glasses, are generally classified into the “holographic type,” the “volumetric type,” and the “stereo pairs’ type.” Nevertheless, the holographic approach is usually constrained in monochromic applications.¹ Besides, the volumetric type, which uses a laser beam to project the sketch of an object on a fast spinning plane, requires a bulky volume against the trend of thinness and light-weight of display technologies.² The stereo pairs’ type, which can be further classified into the “spatial-multiplexed type” and the “time-multiplexed type,” therefore becomes the most popular approach because of the compatibility with current LCD technologies.

For the spatial-multiplexed type, odd and even pixels of the panel control projected images to left and right eyes, respectively. Using a parallax barrier³ and a lenticular lens⁴ are the major approaches to obtain two emitting cones of light to respective eyes, yet, resulting in resolution of one half or less and light efficiency degradation compared to the time-multiplexed approach. Furthermore, critical alignment to LCD pixels is a serious concern. Among reported time-multiplexed methods, Travis and Lang⁵ used a fast-switching liquid-crystal (LC) shutter and projection lens system to produce stereoscopic images. However, the huge volumes of the display system usually hinders its applications. Recently, Sasagawa *et al.*,⁶ used a double-sided prism sheet with two fast switching light sources. In the prism sheet, a lenticular lens is combined with line prisms and the focal plane of the lens is set to the ridge of the prism. However, the unavoidable displacement between lenticular lenses and prisms causes the boundary angle of separation shifted from the normal viewing. In order to simplify the design and fabrication and to nullify the boundary angle shift, a novel focusing foil with asymmetric grooves was proposed. The focusing foil was placed upon a grooved light guide with large vertex angles to form a directional backlight. Using the novel directional backlight in combination with a fast switching LCD, two emitting cones of light were projected in our left and right eyes sequentially. Compared with the spatial-multiplexed approach, resolution and light efficiency of

K.-W. Chien (dodu.eo88g@nctu.edu.tw) is with the Department of Photonics, Institute of Electro-Optical Engineering, National Chiao Tung University, Hsinchu 30010, Taiwan. H.-P. Shieh (hpshieh@mail.nctu.edu.tw) is with the Display Institute, National Chiao Tung University, Hsinchu 30010, Taiwan.

Received 4 January 2005; revised 21 March 2005; accepted 26 September 2005.

0003-6935/06/133106-05\$15.00/0

© 2006 Optical Society of America

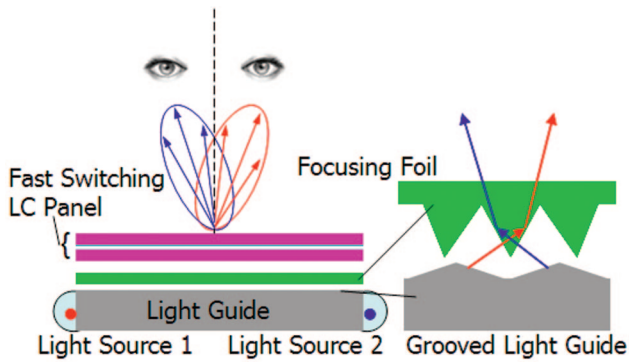


Fig. 1. (Color online) Schematics of a directional backlight with a switching LCD. Two restricted viewing cones were sequentially observed by the viewer's left and right eyes, respectively.

display are not degraded due to no need of distinction of odd and even pixels. Additionally, critical alignment is not essential.

2. Theory

A switching, directional backlight composed of an asymmetric focusing foil, a grooved light guide, and a fast switching LCD was proposed to realize an autostereoscopic display. Two restricted viewing cones were sequentially emitted from switching backlights. As shown in Fig. 1, two states of an image were therefore obtained in our left and right eyes, respectively. The fast switching LCD was then utilized with the directionally switching backlight to achieve binocular disparity.

As schematically shown in Fig. 2, a directional backlight consists of a microgrooved light guide in combination with a focusing foil. When the light source was switched on, a large inclined angle of viewing cone was emitted from a microgrooved light guide. A total internal reflection occurred at the interface of the focusing foil, which was followed by a refraction of the large inclined light. A focusing foil therefore redirected the light to the viewer's eyes. According to the geometric calculations [Fig. 2(a)], the relationship among θ , θ' , θ'' , and θ''' can be obtained from Eqs. (1), (2), and (3). Using Eq. (3) by replacing θ' and θ'' in Eqs. (1) and (2), the emitted angle of directional backlight was derived as Eq (4).

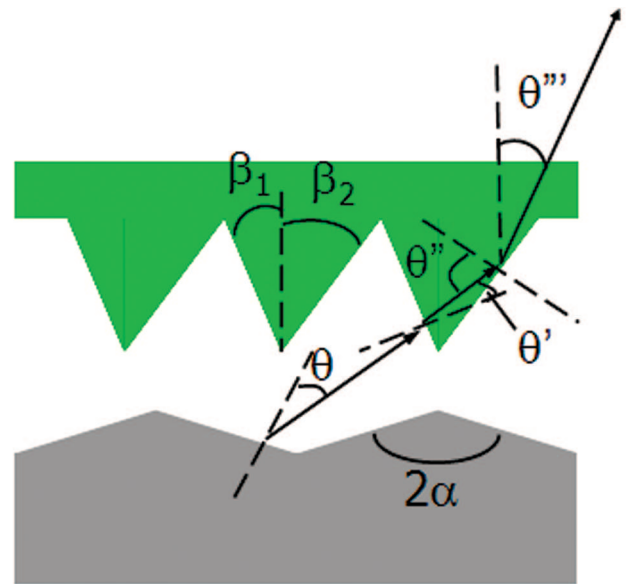
$$n \sin \theta' = \sin[\theta - (\alpha - \beta_1)], \quad (1)$$

$$\theta'' = \beta_1 + \beta_2 - \theta', \quad (2)$$

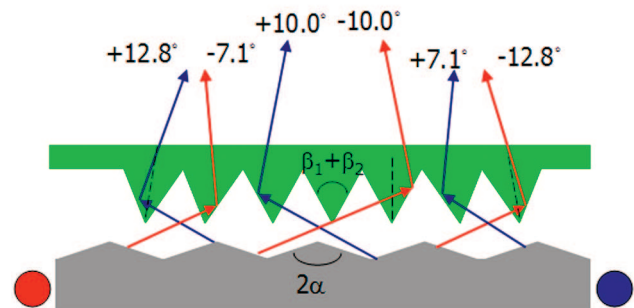
$$\beta_2 - \theta''' = 90^\circ - \theta'', \quad (3)$$

$$\theta''' = 2 \times \beta_2 + \beta_1 - 90^\circ - \sin^{-1} \left[\frac{\sin(\theta - \alpha + \beta_1)}{n} \right], \quad (4)$$

where θ is the emitted angle from the grooved light guide, θ' is the refracted angle at the left-side interface of grooves, θ'' is the incident angle at the right-



(a)



(b)

Fig. 2. (Color online) (a) Schematics of a directional backlight. (b) A large inclined angle of viewing cone was emitted from a microgrooved lightguide. An asymmetric focusing foil was then utilized to redirect light to the eyes.

side interface of grooves, θ''' is the emitted angle of the directional backlight, β_1 and β_2 depict the composed vertex angles of asymmetric focusing foil, α is the half vertex angle of grooved light guide, and n is the refractive index of the focusing foil. From Eqs. (1) and (4), it is clear that the emitted angle from the grooved light guide increases when the vertex angle (2α) of the grooved light guide becomes larger. Hence, the emitted angle θ''' from the backlight becomes larger as well. In addition, θ''' increases when the vertex angle ($\beta_1 + \beta_2$) of the grooved light guide becomes larger. Consequently, the emitted angle of directional backlight can be determined by the vertex angles of asymmetric focusing foil and grooved light guide. The desired angular distributions to the left and right eyes were therefore achieved by modifying a grooved light guide with a focusing foil. Figure 3 illustrates an overview schematic of the observer's relative position and viewing angle to the display. A backlight of size 35 mm (l) \times 28 mm (w) was placed at a viewing distance of 185 mm. The distance between the left and

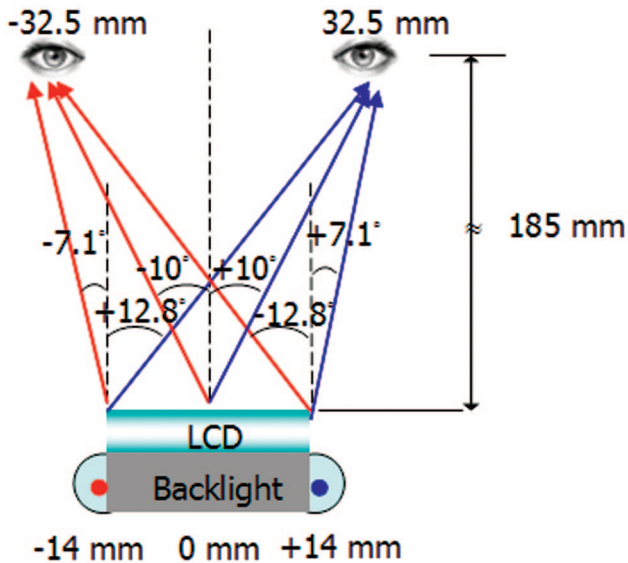


Fig. 3. (Color online) Schematic of the observer's relative position and the viewing angle to the display. A backlight of size 35 mm (l) \times 28 mm (w) was placed at a viewing distance of 185 mm. The observer's left and right eyes are located around -10° and 10° to the normal viewing direction.

the right eyes was estimated around 65 mm. The viewer's left and right eyes were located around -10° and 10° to the normal viewing direction, respectively. Mobile applications are the first target application due to the ease of prediction of the viewer's position without using head tracking systems. Two sets of light sources were switched on sequentially to emit light to the left and the right eyes, respectively. In order to focus the light by different indicated viewing angles in their respective regions, asymmetrical microgrooves were used to redirect light propagation. A slant of grooves becomes steeper while the other slant is gentler. For example, assuming the vertex angle of a grooved light guide is 165° , the emitted angle θ of 67.5° from the grooved light guide was obtained by ray tracing. The refractive index of the focusing foil is set to be 1.49. For the middle region of the backlight, $\beta_1 = \beta_2$ and $\theta''' = -10^\circ$ were assumed. As a result, $\beta_1 = \beta_2 = 30^\circ$ can be obtained according to Eq. (4). In consideration of the ease of fabrication, 60° of the top angles of asymmetrical grooves remain constant. Nevertheless, the emitted angle θ''' of the directional backlight will be shifted due to the rotation of the groove's slant by a factor of 2. Therefore, in order to satisfy the defined angles -7.1° and -12.8° for the left-handed and the right-handed regions, (β_1, β_2) are designed to be $(31.5^\circ, 28.5^\circ)$ and $(28.5^\circ, 31.5^\circ)$ due to the shift of the emitted angle θ''' of approximately 3° . In other words, from the left-handed to the right-handed regions, the symmetric axis of grooves rotates from 1.5° to -1.5° in the gradient. When the display is scaled up, the shift of the emitted angle of the directional backlight and the rotation of the symmetric axis of grooves become larger from the central to the edge regions. Furthermore, as in the example we demonstrated, the top angle of the focusing foil needs

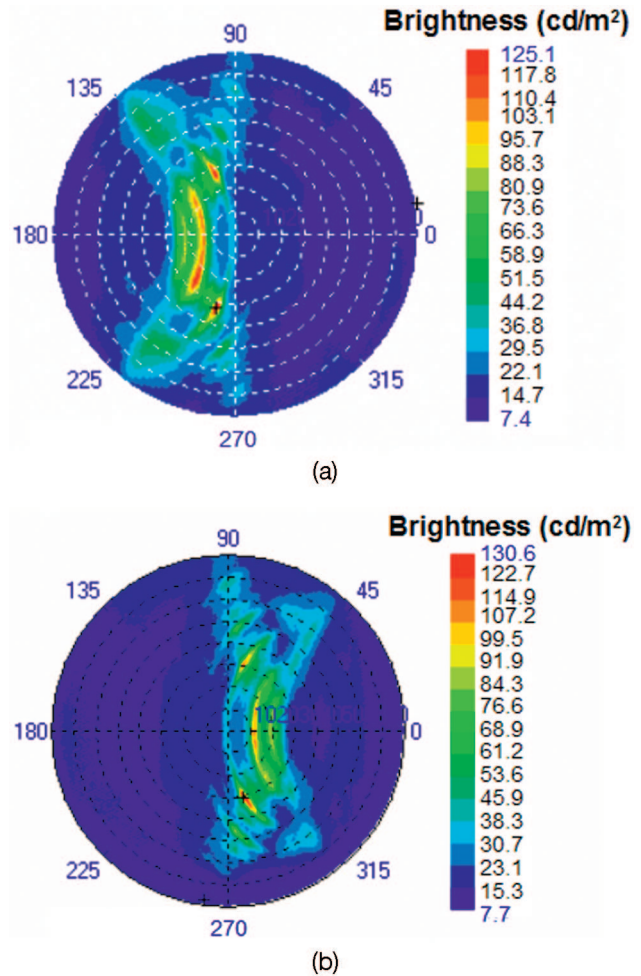


Fig. 4. (Color online) Using backlight brightness intensity of 2100 cd/m^2 , angular distributions of the backlight module with a LC panel when the (a) left- and (b) right-side LEDs are switched on.

to be redesigned and optimized for different viewing distances.

3. Numerical Results and Measurement

In fabrication of the grooved light guide, microgrooves of a vertex angle of 165° at a groove pitch of $100 \mu\text{m}$ were directly cut into the mold by diamond turning. Injection molding was then utilized to fabricate the light guide. Additionally, a focusing foil of 60° vertex at a groove pitch of $30 \mu\text{m}$ was micromachined. The pitch ratio of a grooved light guide to a focusing foil was designed to be less than 3, so that the moiré phenomenon caused by the overlapping of periodic structures could be suppressed and invisible to human eyes. Using white light LEDs with light bars as side-illuminated light sources, angular distributions of emitting light from the backlight module were measured by EZcontrast 160. Using backlight brightness intensity of 2100 cd/m^2 , Figs. 4(a) and 4(b) depict the measured angular distributions of a directional backlight with a LC panel by sequentially switching the left- and right-side LEDs, plotted as a function of azimuth angle ϕ' and inclination angle θ' .

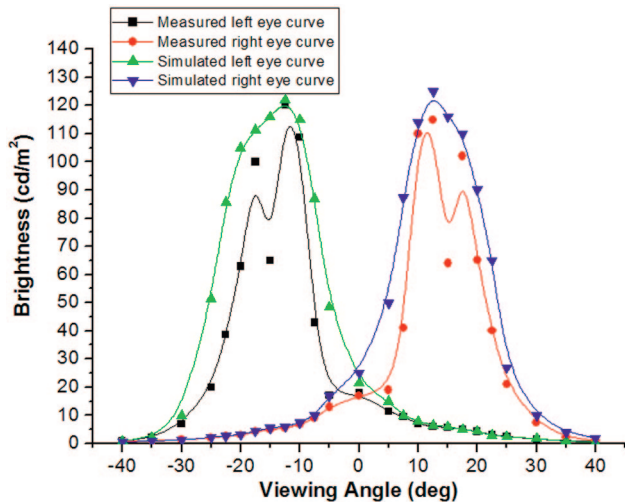


Fig. 5. (Color online) For the $\phi' = 90^\circ$ cross section, the simulated and measured brightness intensity dependences on viewing angles.

The azimuthal angle defined the rotation of the detecting plane of inclination ranges from 0° to 360° . In contrast, the inclination angle defined the radial position of the detecting plane, ranges from 0° to 80° . According to the measurement of Fig. 4(a), most of the light was distributed between the inclination angle of -30° and 0° when left-side LEDs were switched on. For the $\phi' = 90^\circ$ cross section shown in Fig. 5, the curves depict the dependence of luminance on different viewing angles of simulation and measurement, respectively. The measured curve closely agrees with the simulated curve. However, some issues need to be further considered. Ideally, when left-side LEDs are switched on, only the left eye can observe the image. Practically, after propagating in the light guide, some rays are reflected by the end surface of the light guide, thus, causing cross talk to the other eye.⁷ The measured luminous intensity is 109 cd/m^2 at a viewing angle of -10° (left eye) while 7 cd/m^2 at viewing angle of 10° (right eye), thus resulted in a cross talk of approximately 6%.

4. Discussion

For conventional 3D displays, the viewer is usually limited to some special viewing positions. Inconvenient feelings hinder our natural vision. From the angular measurement shown in Fig. 5, when our left eye is located at a viewing angle between -7.5° and -20° while our right eye is at a viewing angle between 7.5° and 20° , cross talk is less than 10%, which is the minimum criterion to produce stereoscopic image perception in our brains.⁸ The position of the viewer can be moved within the range of a viewing angle between -7.5° and -20° . Therefore, the viewing distance can be adjusted to within 90 and 250 mm. In addition, cross talk was caused by the reflected rays at the end surface of the light guide. Cross talk can be further improved by increasing light utilization efficiency. If light is fully utilized, there is no light reflecting, thus reducing cross talk.

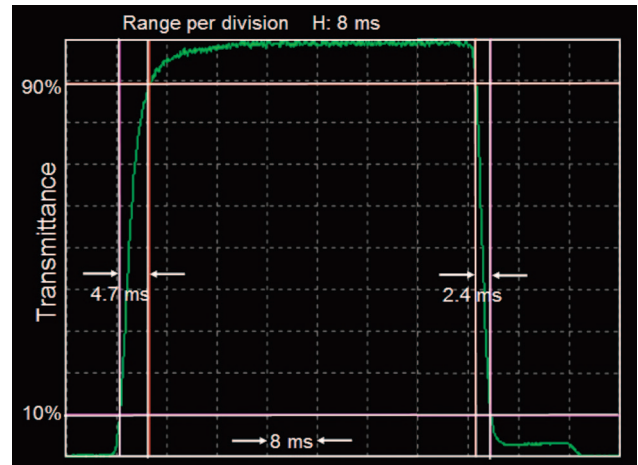


Fig. 6. (Color online) Rising and falling times measured as the duration between 10% and 90% transmittance.

Besides, by reducing the thickness of the grooved light guide from 1 to 0.8 mm the light utilization efficiency can be further enhanced by 20% because of the increasing opportunities of light hitting on the grooves of the light guide.

Additionally, a fast-switching LC panel is essential to sequentially obtain images in our left and right eyes. If the two field sequential images are displayed with the frame frequency faster than 60 Hz, the flicker is undistinguishable by human eyes. In this case sequentially switching two images, the response time of the LCD needs to be less than 8 ms. A 90° twisted nematic LC panel of an ultrathin cell gap ($2 \mu\text{m}$) was therefore fabricated to achieve a fast response time. As shown in Fig. 6, the rise and fall times of the LCD are defined as the duration between the 10% and the 90% transmittance. Rise and fall times were measured to be 4.7 ms and 2.4 ms, respectively. Total response time, which is the sum of rise and fall times, can reach 7.1 ms. In addition, to avoid cross talk while refreshing the images of the previous frame, a black image is hence inserted between the left and the right eye image by inputting a black image on the LC panel or switching off the backlight. The former approach needs doubling the frequency of the LC panel. The latter approach, which is the so-called blinking backlight, was used because it made less demands on LC response time. The photographs of a directional backlight with a LCD panel are demonstrated in Fig. 7. By switching on light source 1, an image on the LCD is clearly visible at the left eye's position. At the same time, an image is hardly visible at the right eye's position. Therefore, it is confirmed that the directional backlight can meet the required properties of time-multiplexed 3D displays.

Furthermore, 2D–3D compatibility is provided by switching on two sets of light sources simultaneously or sequentially, respectively. Two-dimensional image perception is achieved when there is no binocular disparity while simultaneously observing the same image. In contrast, 3D image perception is obtained



(a)



(b)

Fig. 7. (Color online) Demonstrated photographs of a directional backlight with a LCD panel at the positions of (a) left and (b) right eyes.

by combining sequentially switching images in our brain.

5. Conclusion

A directional backlight with a fast switching LCD was designed and fabricated to realize a 3D mobile display. A grooved light guide in combination with an

asymmetric focusing foil was utilized to redirect light to our eyes. The groove structures of the focusing foil with rotation from -1.5° and 1.5° in the gradient were designed to simplify double-sided prism structures, thus avoiding the boundary angle shifted from the normal viewing. Additionally, the pitch ratio of the grooved light guide to the focusing foil is less than 3 to suppress the moiré phenomenon. The measured cross talk of the backlight module with a LC panel is less than 6%. In addition, the blinking backlight was applied on the module to reduce the cross talk while refreshing the image. The response time of the LC can reach 7.1 ms, so that the two field sequential images are displayed without the flicker. The photographs of the directional backlight with a LCD panel are also included to demonstrate the functioning of the devices. By switching on light source 1, an image on the LCD is clearly visible at the left eye's position while hardly visible at the right eye's position. Hence, the directional backlight is confirmed to meet the required properties of time-multiplexed 3D displays. Furthermore, the proposed autostereoscopic display module provides 2D–3D compatibility without degrading display resolution and efficiency in switching mode.

This work was partially supported by National Science Council, the Republic of China under contract NSC92-2215-E009-053, and AU Optronics Corporation. We express our appreciation to Hugo Cornelissen, Philips Research Laboratories; Jim-Min Chang, Aaron Hu, and Vincent Yang, AU Optronics Corporation, for valuable discussions and technical support.

References

1. P. St-Hilaire, S. A. Benton, M. Lucente, J. D. Sutter, and W. J. Plesniak, "Advances in holographic video," in *Practical Holography VII: Imaging and Materials*, Proc. SPIE **1914**, 188–196 (1993).
2. P. Soltan, J. A. Trias, W. J. Dahlke, R. V. Belfatto, and F. Sanzone, "Laser-based 3D volumetric display system," U.S. patent 5,854,613 (29 December 1998).
3. I. Sexton, "Parallax barrier 3-D TV," in *Three-Dimensional Visualization and Display Technologies*, Proc. SPIE **1083**, 84–92 (1989).
4. H. Morishama, H. Nose, N. Taniguchi, K. Inoguchi, and S. Matsumura, "An eyeglass-free rear-cross-lenticular 3D display," in *Society for Information Display (SID) International Symposium Digest* (Society for Information Display, 1998), pp. 923–926.
5. A. R. L. Travis and S. R. Lang, "The design and evaluation of a CRT-based autostereoscopic display," in *Proceedings of Society Information Display (SID)* (Society for Information Display, 1991), Vol. 32, pp. 279–282.
6. T. Sasagawa, A. Yuuki, S. Tahata, O. Murakami, and K. Oda, "Dual directional backlight for stereoscopic LCD," in *Society for Information Display (SID) International Symposium Digest* (Society for Information Display, 2003), pp. 399–402.
7. Y. Yeh and L. Silverstein, "Human factors for stereoscopic color displays," *Society for Information Display (SID) International Symposium Digest* (Society for Information Display, 1991), pp. 826–829.
8. A. Lit, "The magnitude of the Pulfrich stereo-phenomenon as a function of binocular differences of intensity at various levels of illumination," *Am. J. Psychology*, **62**, 159–165 (1949).