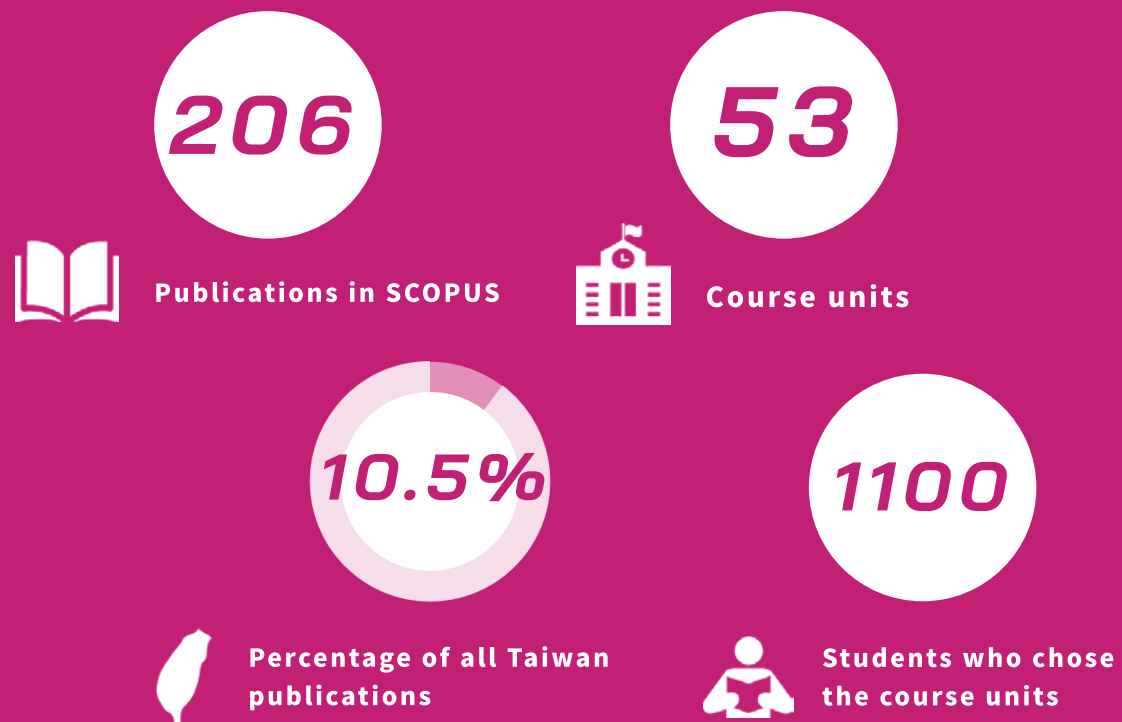


10

REDUCED INEQUALITIES

*Reduce inequality within and among countries.
Reduce inequality within and among countries.
Reduce inequality within and among countries.*



Research

AIoT Talent Training Program: Establishing Science and Technology Education

Since 2019, the NYCU Chiaotung campus has organized relevant resources and worked with tech companies to establish the AIoT Talent Training Program. With the assistance of local schools, this program has trained the first batch of information education teachers specialized in the science and tech field. To do so, the program collaborated with the TSMC Charity Foundation, enabling it to introduce semiconductor AIoT sensor teaching aids and incorporate core processing and sensing elements into the courses. The program has trained 29 seed teachers in four schools and is expected to benefit 20 elementary schools in Hsinchu County. In addition to training teachers, the program also trains disadvantaged students at NYCU on the basics of AI/IoT/coding so they can work as teaching assistants in related high school classes, as well as obtain funding scholarships to help with their living expenses. The program also co-hosted the National AIoT Sensor Award with Taoyuan City and Hsinchu County to encourage teachers and students to make use of technological tools and foster teamwork and collaboration skills.



Resource from : <https://udn.com/news/story/7324/5953181>



Never Stop Learning - Learning Disability Outreach

The education sector pays a lot of attention to learning disabilities. To effectively identify children with learning disabilities in remote areas, then carry out subsequent clinical assessments and offer appropriate remedial education, the research team led by Professor You-Yin Chen of the Department of Biomedical Engineering proposed the Never Stop Learning program, as part of which they established an AI platform to screen for learning disabilities. The program was designed mainly to address the lack of support resources for children with learning disabilities in remote areas. AI-assisted misspelling recognition software was developed for mobile devices to help evaluate students' writing skills, which eliminates the cost and difficulty of sending medical and educational personnel to remote villages. With funds provided by the MediaTek Foundation, the program organized the online event "Behind the Mistakes: Misspelling Pattern Recognition Workshop" on October 3, 2021 for language therapists and special needs teachers. The workshop aimed to improve participants' understanding of children with learning disabilities and provide participants with the skills needed to independently operate the misspelling recognition mobile software in educational or medical settings. This AI learning disability screening platform won the Excellence Award and Popularity Award at MediaTek's 2021 "Genius for Home" digital social innovation competition.

Social Impact

Supporting a Social Welfare Organization Amidst the Pandemic

During the Mid-Autumn Festival in 2021, the National Yang Ming Chiao Tung University Hospital sought to express its gratitude to the healthcare professionals who worked so hard during the pandemic and also help a social welfare organization that was affected by the pandemic. To do so, it reached out to the Lan-Shin Women and Children Service Center, which faced challenges during the difficult time of the pandemic, and ordered mooncakes from the center for the hospital staff to enjoy.

Protecting Access to Knowledge for the Visually Impaired - Upgrades to the Audiobook Service

NYCU Libraries' audio magazine service aims to protect the reading rights of those who are visually impaired and eliminate information gaps. In February 2021, the "NYCU Library Love Blind Audio Magazine" service added *One Little Day* and *Health World* to its existing publications in the libraries' catalog. The catalog includes *Common Wealth Magazine*, *Crown Magazine*, *Evergreen*, *National Geographic Magazine*, *Scientific American*, and *Performing Arts Redefined*. In addition to the audio magazines, the libraries now also provide audio versions of outstanding articles from seven other periodicals, which are recorded by volunteers.



10 REDUCED INEQUALITIES

Student Cultivation

Helping People with Technology and Promoting Science and Programming Education

NYCU partnered with Taiwan's tech industry leader—TSMC—to organize science education camps. The Service-Learning Center of NYCU matched students from the Department of Electronics and Electrical Engineering with TSMC partners, who worked together on tech education for elementary school teachers and students. Furthermore, based on years of experience with service learning, students from NYCU's Department of Electrophysics and Department of Applied Chemistry also developed "Fun with Chemistry!" teaching plans, which have been implemented in elementary schools in Hsinchu. Through its service-learning mechanism, NYCU actively encourages students and faculty members to address social issues by applying their professional knowledge, which can contribute to providing quality education in the community and working together to achieve education equality.

Learning by Serving Others

NYCU's Center for Teacher Education has implemented the Ministry of Education's "Schweitzer Program" since 2013, encouraging teachers and students to follow the example of educator Albert Schweitzer, who cared greatly for the disadvantaged and made exceptional efforts to enhance their prospects. Every year, during summer vacation, NYCU teachers and students put the educational knowledge and theories they have learned into practice. They attend Baoshan Junior High School, where they provide on-site academic, moral, life, and career support to disadvantaged students (including indigenous students, students from low-income families, and students with foreign parents). This project gives future teachers an opportunity to interact with and support students, and it broadens the horizons of students from remote villages, thereby helping to close the education gap.

Stewardship

Student Aid Programs: Providing Support to Students

In supporting economically disadvantaged students, the Student Assistance Division of NYCU follows all relevant laws and regulations and offers the maximum financial assistance. More than that though, its support also incorporates humanistic care and companionship. By reaching out to such students and seeking to understand their difficulties in studies and life, NYCU can go further to provide assistance and timely referrals to other services. NYCU also provides information regarding scholarships and the subsidies available for national exam registration fees, and it offers incentives for students to participate in activities to explore their career opportunities. In addition, NYCU organizes events for overseas Chinese students such as Chinese New Year activities, making sure that they feel welcomed, accepted, and like they are at home.

Financial Assistance Mechanisms

To encourage low-income and disadvantaged students to stay in school, NYCU has set up a scholarship section on its website, helping students find resources such as student loans, emergency financial aid, or information on work-study opportunities and scholarships. The website includes a page for scholarships that compiles information on over 300 on-campus and external scholarships and financial aid opportunities, so that students who need these can apply as soon as possible. NYCU has a dedicated unit that promotes university social responsibility. The unit has set up the "Financial Aid for Economically Disadvantaged Students," "Jade Admissions," and "SDGs Social Responsibility Program." In particular, the "Financial Aid for Economically Disadvantaged Students" provides approximately NT\$10 million each year to help disadvantaged students with academic assistance and career exploration. It is hoped that the tailored support mechanism will help disadvantaged students take on diverse learning and innovative research. NYCU also offers a variety of part-time research work opportunities, encouraging students to work on research in their specialized fields or assist in school administrative affairs during their time at NYCU. The statistics show that more than 5000 students have so far participated in work-study programs, while over 10,000 students have worked as part-time assistants on a monthly salary.



Establishing an Indigenous Students Resource Center

In line with Article 25 of the Education Act for Indigenous Peoples, NYCU officially established the Indigenous Students Resource Center in 2020. The center provides indigenous students with academic, life, and cultural support and also organizes many events, including the “Paiwan and Rukai Traditional Cinavu Cooking Workshop” and “Indigenous Music Class—Paiwan Edition.” These events allow all students to learn about and come to appreciate different cultures, as well as join in with them, fostering a friendly campus environment for all students.

Stewardship

Individualized Services at the Mental Health and Counseling Center Help Students with Disabilities Adjust to Campus Life

In 2021, NYCU had 95 students with special educational needs. The university provided personalized support services for each student, including life, academic, career, and psychological counseling services. These are aimed at helping students adapt to campus life, successfully complete their studies, and reach their full potential. The Yangming campus was built on a hillside. To make it more convenient for those with disabilities to navigate around and find accessible facilities, the special education classroom implemented the “campus accessibility analysis and search function plan,” combining resources from the administrative offices, academic offices, and the ICF Assistive Technology Center. Based on this, it successfully launched the “Friendly Campus: Accessibility Search Function,” which helps those with disabilities search for and utilize accessible facilities more easily. Meanwhile, at the Chiaotung campus, the Graduate Institute of Architecture and the Ministry of Education’s Department of Student Affairs and Special Education teamed up to develop the University Campus Accessmap Taiwan (UCAT) for those with disabilities: <https://ucat.moe.edu.tw/>



University Campus Accessmap Taiwan:
<https://ucat.moe.edu.tw/>