

Flow-Dependent Regulation of Krüppel-Like Factor 2 Is Mediated by MicroRNA-92a
Wei Wu, Han Xiao, Andrés Laguna-Fernandez, Guadalupe Villarreal, Jr, Kuei-Chun Wang,
Greg G. Geary, Yuzhi Zhang, Wei-Chi Wang, Hsien-Da Huang, Jing Zhou, Yi-Shuan Li, Shu
Chien, Guillermo Garcia-Cardena and John Y.-J. Shyy

Circulation. 2011;124:633-641; originally published online July 18, 2011;
doi: 10.1161/CIRCULATIONAHA.110.005108

Circulation is published by the American Heart Association, 7272 Greenville Avenue, Dallas, TX 75231
Copyright © 2011 American Heart Association, Inc. All rights reserved.
Print ISSN: 0009-7322. Online ISSN: 1524-4539

The online version of this article, along with updated information and services, is located on the
World Wide Web at:

<http://circ.ahajournals.org/content/124/5/633>

Data Supplement (unedited) at:

<http://circ.ahajournals.org/content/suppl/2011/07/14/CIRCULATIONAHA.110.005108.DC1.html>

Permissions: Requests for permissions to reproduce figures, tables, or portions of articles originally published in *Circulation* can be obtained via RightsLink, a service of the Copyright Clearance Center, not the Editorial Office. Once the online version of the published article for which permission is being requested is located, click Request Permissions in the middle column of the Web page under Services. Further information about this process is available in the [Permissions and Rights Question and Answer](#) document.

Reprints: Information about reprints can be found online at:
<http://www.lww.com/reprints>

Subscriptions: Information about subscribing to *Circulation* is online at:
<http://circ.ahajournals.org/subscriptions/>

Flow-Dependent Regulation of Krüppel-Like Factor 2 Is Mediated by MicroRNA-92a

Wei Wu, PhD; Han Xiao, MD, PhD; Andrés Laguna-Fernandez, MS; Guadalupe Villarreal, Jr, BS; Kuei-Chun Wang, BS; Greg G. Geary, PhD; Yuzhi Zhang, MS; Wei-Chi Wang, BS; Hsien-Da Huang, PhD; Jing Zhou, PhD; Yi-Shuan Li, PhD; Shu Chien, MD, PhD; Guillermo Garcia-Cardena, PhD; John Y.-J. Shyy, PhD

Background—Upregulated by atheroprotective flow, the transcription factor Krüppel-like factor 2 (KLF2) is crucial for maintaining endothelial function. MicroRNAs (miRNAs) are noncoding small RNAs that regulate gene expression at the posttranscriptional level. We examined the role of miRNAs, particularly miR-92a, in the atheroprotective flow-regulated KLF2.

Methods and Results—Dicer knockdown increased the level of KLF2 mRNA in human umbilical vein endothelial cells, suggesting that KLF2 is regulated by miRNA. *In silico* analysis predicted that miR-92a could bind to the 3' untranslated region of KLF2 mRNA. Overexpression of miR-92a decreased the expression of KLF2 and the KLF2-regulated endothelial nitric oxide synthase and thrombomodulin at mRNA and protein levels. A complementary finding is that miR-92a inhibitor increased the mRNA and protein expression of KLF2, endothelial nitric oxide synthase, and thrombomodulin. Subsequent studies revealed that atheroprotective laminar flow downregulated the level of miR-92a precursor to induce KLF2, and the level of this flow-induced KLF2 was reduced by miR-92a precursor. Furthermore, miR-92a level was lower in human umbilical vein endothelial cells exposed to the atheroprotective pulsatile shear flow than under atheroprone oscillatory shear flow. Anti-Ago1/2 immunoprecipitation coupled with real-time polymerase chain reaction revealed that pulsatile shear flow decreased the functional targeting of miR-92a precursor/KLF2 mRNA in human umbilical vein endothelial cells. Consistent with these findings, mouse carotid arteries receiving miR-92a precursor exhibited impaired vasodilatory response to flow.

Conclusions—Atheroprotective flow patterns decrease the level of miR-92a, which in turn increases KLF2 expression to maintain endothelial homeostasis. (*Circulation*. 2011;124:633-641.)

Key Words: endothelial cells ■ KLF2 ■ miRNA ■ shear stress ■ vasodilation

The vascular endothelium, located at the interface between the circulating blood and the vessel wall, is exposed to shear stress resulting from blood flow. The endothelium in straight parts of the artery tree is subjected to pulsatile shear stress with a significant forward direction, which is an important physiological stimulus enhancing vessel compliance and conferring antithrombotic, antiadhesive, and anti-inflammatory effects. In contrast, disturbed flow patterns at the arterial bifurcations and curvatures can cause endothelial dysfunction, which initiates atherosclerosis.¹⁻⁴

Editorial see p 541 Clinical Perspective on p 641

The transcription factor Krüppel-like factor 2 (KLF2) is a critical integrator for endothelial lineage development and vascular functions (reviewed in References 5 through 7). KLF2 can be highly induced by shear stress with a significant forward direction (whether steady laminar flow or pulsatile flow), as well as by 3-hydroxy-3-methylglutaryl coenzyme A reductase inhibitors (ie, statins). Previous studies have shown that KLF2 can be induced by shear stress at both transcrip-

Received November 2, 2010; accepted May 11, 2011.

From the Division of Biomedical Sciences, University of California–Riverside, Riverside (W.W., H.X., J.Y.S.); Center for Excellence in Vascular Biology, Departments of Pathology, Brigham and Women's Hospital and Harvard Medical School, Boston, MA (A.L.-F., G.V., Y.Z., G.G.-C.); Department of Bioengineering and Institute of Engineering in Medicine, University of California–San Diego, La Jolla (K.W., J.Z., Y.L., S.C.); Department of Kinesiology and Health Sciences, California State University, San Bernardino (G.G.G.); and Department of Biological Science and Technology, Institute of Bioinformatics and Systems Biology, National Chiao Tung University, HsinChu, Taiwan (W.W., H.H.).

Guest Editor for this article was Charles J. Lowenstein, MD.

The online-only Data Supplement is available with this article at <http://circ.ahajournals.org/cgi/content/full/CIRCULATIONAHA.110.005108/DC1>.

Correspondence to John Y.-J. Shyy, PhD, Division of Biomedical Sciences, University of California–Riverside, Riverside, CA 92521 (E-mail john.shyy@ucr.edu); or Guillermo Garcia-Cardena, PhD, Departments of Pathology, Brigham and Women's Hospital and Harvard Medical School, Boston, MA 02115 (E-mail guillermo_garcia-cardena@hms.harvard.edu).

© 2011 American Heart Association, Inc.

Circulation is available at <http://circ.ahajournals.org>

DOI: 10.1161/CIRCULATIONAHA.110.005108

tional and posttranscriptional levels. The induction of KLF2 mRNA by laminar shear stress has been suggested to be mediated through the MEK5/ERK5/MEF2 pathway, which is AMPK dependent.^{8–13} Shear stress increases the stability of KLF2 mRNA, with attendant elevation of KLF2 protein.¹⁴ The molecular basis of such an increased stability of KLF2 mRNA has not been established.

MicroRNAs (miRNAs) are noncoding small RNAs that regulate gene expression at the posttranscriptional level.^{15–17} Ranging from 18 to 24 nucleotides (22 nucleotides in general), miRNAs bind to the 3' untranslated region (3'UTR) of their target mRNAs, with ensuing suppression of protein translation or enhancement of mRNA degradation. Analysis of miRNAs expressed in arterial walls and cultured vascular endothelial cells (ECs) has shown that ≈ 40 miRNAs are highly expressed in ECs.^{18–20} These miRNAs play important roles in regulating blood vessel development, wound healing, redox signaling, inflammatory responses, and angiogenesis (reviewed in Reference 21). Using miRNA microarrays, we and others have shown that laminar shear stress upregulates a set of miRNAs in ECs in vitro and in vivo.^{22–25} Functionally, miR-21 increases NO bioavailability and reduces EC apoptosis, miR-19a and miR-23b regulate EC proliferation,^{22–24} and miR-10a is anti-proinflammatory.²⁵ Several recent reports demonstrated that the miR-17–92 cluster regulates cardiac development, EC proliferation, and angiogenesis (reviewed in Reference 26). In this cluster, miR-92a was the first miRNA identified to regulate angiogenesis. Loss- and gain-of-function experiments showed that miR-92a inhibited angiogenesis in vitro and in vivo.²⁷ Importantly, miR-92a overexpression in human umbilical vein ECs (HUVECs) suppressed the expression of several KLF2-regulated genes such as endothelial nitric oxide synthase (eNOS) and thrombomodulin.²⁷ The lack of miR-92a binding sites in the 3'UTR of these genes suggests that a mechanism other than direct targeting of miR-92a is involved.

In the present study, we report that atheroprotective flow causes downregulation of miR-92a in ECs, which in turn elevates the KLF2 mRNA. The functional consequences of the flow-regulated miR-92a/KLF2, including the augmentation of eNOS and thrombomodulin levels and increase of NO bioavailability, can be mimicked by inhibition of miR-92a. These findings suggest a new paradigm of mechanotransduction that involves the shear modulation of miRNAs, KLF2 expression, and vascular homeostasis.

Methods

miRNA and mRNA Real-Time Polymerase Chain Reaction

Quantitative real-time polymerase chain reaction was performed to measure the level of miR-92a with the TaqMan miRNA assay kit according to the manufacturer's protocol (Applied Biosystems, Foster City, CA). For the quantification of KLF2, eNOS, and thrombomodulin mRNA, quantitative real-time polymerase chain reaction was performed with the iQ SYBR Green supermix (Bio-Rad, Hercules, CA).

Knockdown and Overexpression of miR-92a and KLF2

miR-92a was knocked down with the use of miR-92a inhibitor (anti-92a) (Ambion Inc, Austin, TX). The overexpression of miR-

92a was achieved by transfecting cells with miR-92a precursor (pre-92a) (Ambion). Dicer1 was knocked down with the use of small interfering RNA obtained from Qiagen (Valencia, CA). The transfections were performed with the use of lipofectamine 2000 (Invitrogen, Carlsbad, CA). For KLF2 overexpression, Ad-KLF2 was used to infect HUVECs.

Shear Stress Experiments

A parallel-plate flow system was used to impose shear stress on ECs cultured in flow channels by established methods.²⁸ Laminar flow, pulsatile shear flow (PS), and oscillatory shear flow (OS) were applied to ECs with shear stress of 12, 12 ± 4 , and 0 ± 4 dyne/cm², respectively.

Western Blot Analysis

Western blot analysis was performed with the use of antibodies against eNOS (Cell Signaling, Beverly, MA), thrombomodulin (ABcam, Cambridge, MA), KLF2, histone H1 (Santa Cruz Biotechnology, Santa Cruz, CA), and α -tubulin (Sigma, St Louis, MO). The anti-KLF2 antibody was obtained by immunizing rabbits with 2 separate synthetic peptides (CALSEPILPSFST-amide and ACALSEPILPSFST-Ahx-C-amide) corresponding to human KLF2 (21st Century Biochemicals, Marlboro, MA). The antiserum was purified by affinity column and tested by enzyme-linked immunosorbent assay.

Statistical Analysis

Data are expressed as either mean \pm SD or mean \pm SEM from at least 3 independent experiments. Two groups were compared by Student *t* test. Differences among multiple groups were evaluated by ANOVA followed by the Bonferroni post hoc test or Dunnett test with Prism 5 for Windows (GraphPad Software Inc, San Diego, CA). *P* < 0.05 was considered statistically significant.

The detailed methods for plasmid construction and luciferase assay, immunoprecipitation of miR-induced silencing complex (miRISC), NO bioavailability assay, flow-induced vasodilation, and computational analysis for KLF2-regulated miRNAs are described in Methods in the online-only Data Supplement.

Results

miRNAs Are Involved in the Regulation of KLF2 Expression

To investigate whether the shear stress induction of KLF2 can be mediated at the posttranscriptional level, HUVECs were presheared with laminar flow for 6 hours and then treated with 5,6-dichloro-1- β -D-ribozimidazole to terminate transcription so that KLF2 mRNA stability could be monitored. As shown in Figure 1A, the degradation rate of KLF2 mRNA in HUVECs exposed to laminar flow was much slower than that under static controls. To explore whether miRNAs are involved in the regulation of KLF2, we knocked down Dicer to block the miRNA biogenesis and found that the levels of KLF2 mRNA and protein increased (Figure 1B and 1C). The levels of eNOS and thrombomodulin, which are downstream targets of KLF2, also increased in ECs with Dicer knockdown (Figure 1C).

By using miRanda, microCosm, and TargetScan, we explored the putative miRNA binding sequences at the 3'UTR of KLF2 mRNA. Twenty miRNA binding sites with 45 miRNAs were predicted (Figure 1D). miRanda, microCosm, and TargetScan predicted, in common, that the segment between 228 and 249 nucleotides contains binding sequences for 8 miRNAs (ie, miR-25, -32, -92a, -92b, -363, -367, -29a, and -29b). Analysis of the secondary structure of this segment

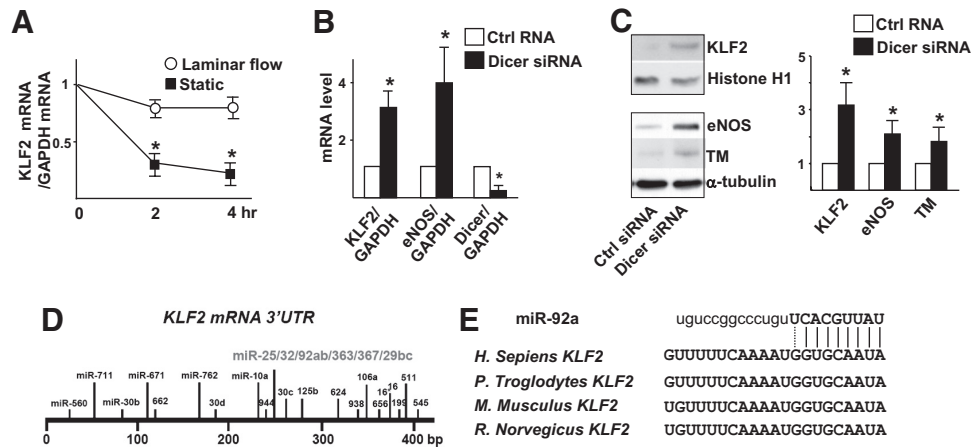


Figure 1. MicroRNAs are involved in the regulation of Krüppel-like factor 2 (KLF2) mRNA. **A**, Human umbilical vein endothelial cells were subjected to laminar flow (12 dyne/cm²) for 6 hours. After the addition of 5,6-dichloro-1- β -D-ribozimidazole (2 μ g/mL), the cells were continuously exposed to laminar flow or static conditions for an additional 2 and 4 hours. The levels of KLF2 and GAPDH mRNAs were measured by quantitative real-time polymerase chain reaction, and the KLF2/GAPDH mRNA ratio is plotted as a percentage of that in the presheared cells. **B** and **C**, Human umbilical vein endothelial cells were transfected with 20 nmol/L Dicer small interfering RNA (siRNA) or control (Ctrl) RNA for 48 hours. Quantitative real-time polymerase chain reaction (**B**) and Western blot analysis (**C**) were performed to detect the mRNA levels of KLF2 and endothelial nitric oxide synthase (eNOS) and protein levels of KLF2, eNOS, and thrombomodulin (TM), respectively. Histone H1 served as the internal control of nuclear extracts. The bar graphs are mean \pm SD from 3 independent experiments. * P <0.05 between Dicer siRNA and control RNA, analyzed by ANOVA followed by Dunnett test (A) or Student t test (B and C). **D**, The miRNA binding sites in the KLF2 3'UTR are predicted by bioinformatics algorithms. **E**, The seed region of microRNA-92a (miR-92a) and its target sequences at the KLF2 3'UTR of several mammalian species: *Homo sapiens*, *Pan troglodytes*, *Mus Musculus*, and *Rattus Norvegicus*.

by RNAfold (<http://www.tbi.univie.ac.at>) revealed that the miRNA binding locus was located in unstable regions, characteristic of a miRNA target site. Among these putative 8 miRNAs, miR-29 and miR-92a are highly expressed in ECs.^{18–20} Interestingly, a nucleotide sequence, GGUGCAAUA, complementary to the seed region of miR-92a is highly conserved among the human, chimpanzee, mouse, and rat KLF2 3'UTR (Figure 1E).

miR-92a Targets KLF2 mRNA

To explore whether miR-92a targets KLF2 mRNA, HUVECs were transfected with pre-92a. Quantitative real-time polymerase chain reaction was performed and confirmed the increased expression of miR-92a and decreased level of KLF2 mRNA in pre-92a-transfected cells compared with the control RNA-transfected HUVECs (Figure 2A). Furthermore, the mRNA level of eNOS and thrombomodulin decreased by \approx 50%. In complementary experiments, HUVECs transfected with anti-92a exhibited higher levels of KLF2, eNOS, and thrombomodulin mRNAs (Figure 2B) and protein (Figure 2C).

To demonstrate the direct targeting of KLF2 3'UTR by miR-92a, we created a cytomegalovirus-driven expression plasmid encoding the wild-type KLF2-3'UTR fused with a FLAG tag [FLAG-KLF2(WT)]. We also fused FLAG to a mutated KLF2-3'UTR in which the miR-92a binding site was altered [FLAG-KLF2(mut)] or deleted [FLAG-KLF2(Δ)]. Together with pre-92a or control RNA, these KLF2 expression plasmids were transfected into HEK293 cells, which have high transfection efficiency and a low level of endogenous KLF2. As shown in Figure 2D, pre-92a, but not control RNA, decreased the level of FLAG-KLF2(WT) fusion protein. In parallel experiments, the expression of FLAG-KLF2(mut) or FLAG-KLF2(Δ) was unaffected by the cotransfected pre-92a.

We also created reporter constructs containing luciferase fused to the wild-type KLF2 3'UTR [Luc-KLF2(WT)] or the mutated KLF2 3'UTR [Luc-KLF2(mut)]. HEK293 cells were cotransfected with Luc-KLF2(WT) or Luc-KLF2(mut) together with pre-92a or control RNA. As shown in Figure 2E, the transfected pre-92a decreased the luciferase activity of Luc-KLF2(WT) compared with cells cotransfected with control RNA but was unable to decrease the luciferase activity of Luc-KLF2(mut). Together, the data from Figure 2 suggest that the 3'UTR of KLF2 mRNA contains a functional miR-92a target site. The interaction of miR-92a with KLF2 mRNA through this site causes the degradation of KLF2 mRNA and/or decreased translation of KLF2.

Shear Stress Regulation of KLF2 Is Mediated by miR-92a

Because shear stress upregulates and miR-92a downregulates KLF2 mRNA in ECs, we examined the effect of laminar flow on miR-92a. As shown in Figure 3A, the level of miR-92a in HUVECs decreased after exposure to laminar flow for 8 hours, and this decrease lasted for at least 16 hours. To explore whether miR-92a is involved in the shear stress-regulated KLF2, HUVECs were transfected with pre-92a and then exposed to laminar flow. As shown in Figure 3B, C, pre-92a transfection attenuated shear stress induction of KLF2 at both mRNA and protein levels. Furthermore, the shear stress induction of eNOS and thrombomodulin was downregulated by pre-92a in a similar manner (Figure 3D through 3F).

Differential Regulation of miR-92a by PS Versus OS

Because of the atheroprotective versus atheroprone natures associated with PS and OS, we compared the miR-92a levels

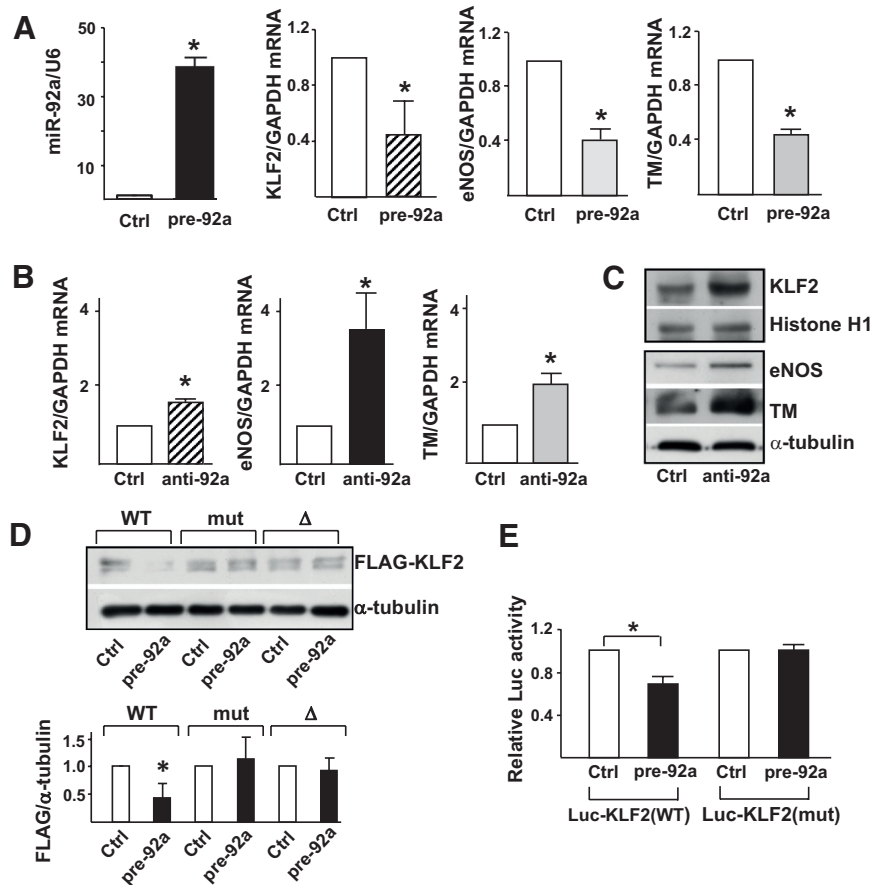


Figure 2. MicroRNA-92a (miR-92a) targets Krüppel-like factor 2 (KLF2) mRNA and decreases KLF2 translation. **A**, Human umbilical vein endothelial cells were transfected with 20 nmol/L miR-92a precursor (pre-92a) or control (Ctrl) RNA. At 48 hours, the levels of miR-92a relative to U6 RNA and KLF2, endothelial nitric oxide synthase (eNOS), and thrombomodulin (TM) mRNA as ratios to GAPDH were assessed by quantitative real-time polymerase chain reaction. In **B** and **C**, Human umbilical vein endothelial cells were transfected with 20 nmol/L miR-92a inhibitor (anti-92a) or control RNA. The mRNA levels of KLF2, eNOS, and thrombomodulin as ratios to GAPDH were assessed by quantitative real-time polymerase chain reaction. The protein levels of KLF2, histone H1, and eNOS were determined by Western blotting. **D**, HEK293 cells were transfected with the wild-type FLAG-KLF2(WT), FLAG-KLF2(mut) (miR-92a binding site mutation), or FLAG-KLF2(Δ) (miR-92a binding site deletion) together with 20 nmol/L pre-92a or control RNA for 48 hours. The cells were then lysed, and the level of exogenously expressed FLAG-KLF2 fusion proteins was detected by Western blot analysis with anti-FLAG. Shown in the bottom panel is the densitometry analysis of the protein amount normalized to that in the control RNA-transfected cells. **E**, HEK293 cells were transfected with the wild-type Luc-KLF2-3'UTR(WT) or Luc-KLF2-3'UTR(mut) together with 20 nmol/L pre-92a or control RNA and cytomegalovirus- β -gal. The luciferase activity was normalized to that of β -gal. The data represent mean \pm SD from 3 independent experiments. * P <0.05 between cells transfected with pre-92a and control RNA.

in HUVECs subjected to PS and OS. Both quantitative real-time polymerase chain reaction and miRNA microarray showed that the expression of miR-92a was attenuated in ECs exposed to PS compared with OS (Figure 4A and 4B). To further test the flow regulation of miR-92a/KLF2, we created a reporter construct in which luciferase was fused to 2 copies of the miR-92a binding site found in the KLF2 3'UTR (Luc-2 \times miR-92a). As shown in Figure 4C, PS caused a 2-fold increase in luciferase activity in bovine aortic ECs compared with static controls. In contrast, OS significantly reduced the luciferase activity compared with static controls (Figure 4D). Furthermore, PS increased whereas OS slightly decreased the luciferase activity of Luc-KLF2(WT) (Figure 4E and 4F).

Because miRNA targeting mRNAs depends on the association of the miRNA/mRNA complex with Ago proteins to form miRISC, we investigated the association of miR-92a and KLF2 mRNA with Ago1 and Ago2 in HUVECs under PS

or OS. As shown in Figure 5A and 5C, the levels of miR-92a and KLF2 mRNA associated with Ago1 or Ago2 immunoprecipitated from HUVECs subjected to PS were lower than those in static controls. In contrast, OS increased the miRISC-associated miR-92a and KLF2 mRNA (Figure 5B and 5D). The expression of neither Ago1 nor Ago2 was affected by the applied PS and OS (Figure I in the online-only Data Supplement). In the isotype controls, miR-92a was not detected in the immunoprecipitates (data not shown).

miR-92a Regulates Nitric Oxide Bioavailability

A functional consequence of the KLF2 induction of eNOS is the increase in NO bioavailability in ECs. Hence, we examined whether NO production is affected by miR-92a. As shown in Figure 6A, miR-92a knockdown by anti-92a enhanced NO production in HUVECs. To demonstrate that the effects of pre-92a on eNOS and NO are mediated by targeting of KLF2, HUVECs were infected with Ad-KLF2 containing

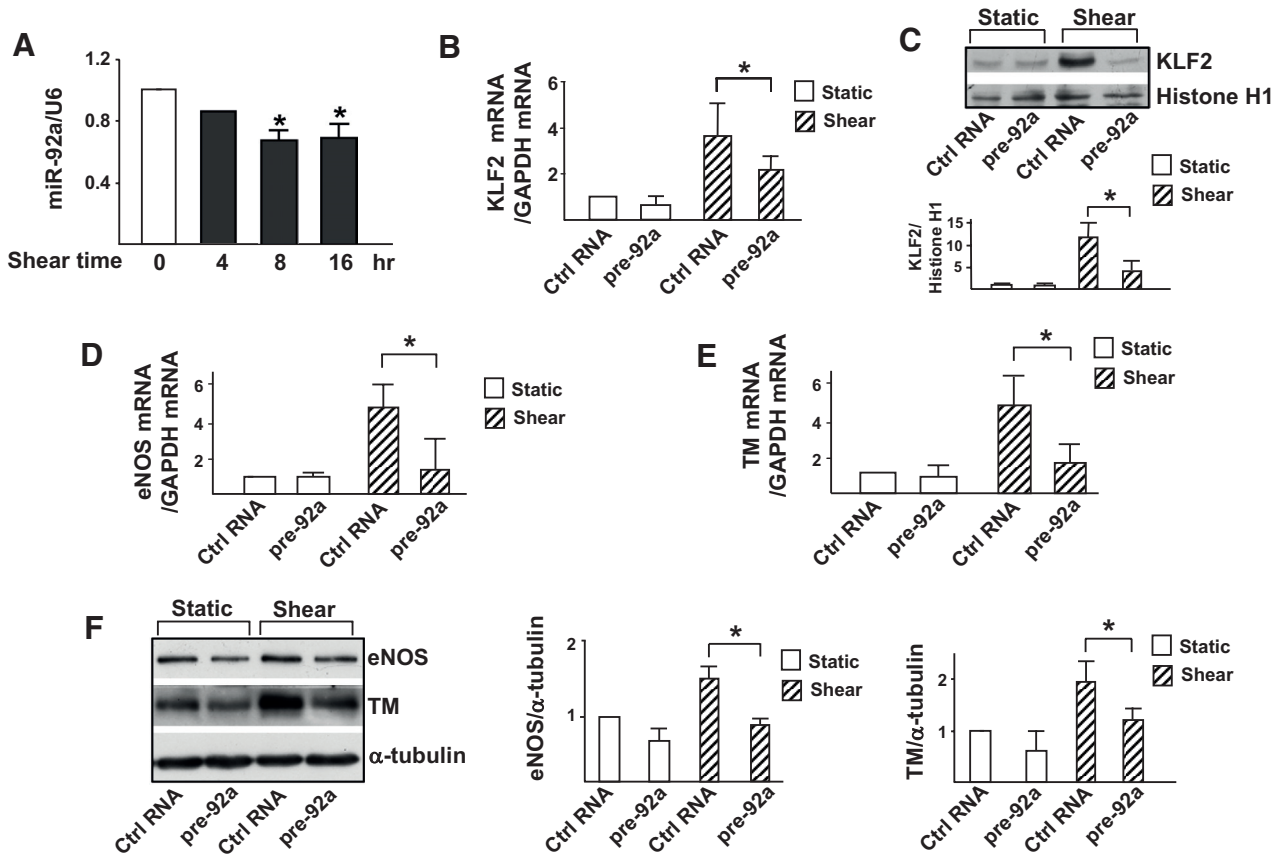


Figure 3. Shear stress induction of Krüppel-like factor 2 (KLF2) is mediated through microRNA-92a (miR-92a). **A**, Human umbilical vein endothelial cells were exposed to laminar flow for 4, 8, or 16 hours. Quantitative real-time polymerase chain reaction was performed to detect the level of miR-92a, which was normalized to that of U6 RNA. * $P < 0.05$ compared with static controls (time 0), analyzed by 1-way ANOVA followed by Dunnett test. **B** through **F**, Human umbilical vein endothelial cells were transfected with 20 nmol/L control (Ctrl) RNA or miR-92a precursor (pre-92a) for 48 hours and then exposed to laminar flow for 8 hours. **B**, KLF2 mRNA level was detected by quantitative real-time polymerase chain reaction; **C**, protein level was assessed by Western blot analysis. **D** and **E**, Endothelial nitric oxide synthase (eNOS) and thrombomodulin (TM) mRNA levels were detected by quantitative real-time polymerase chain reaction; **F**, protein level was assessed by Western blot analysis. Results of statistical analyses are shown on the right. The data represent mean \pm SD from 3 independent experiments. * $P < 0.05$ between the indicated groups, analyzed by 2-way ANOVA followed by the Bonferroni post hoc test.

its 3'UTR (Ad-KLF2-3'UTR). As shown in Figure 6B, the level of eNOS mRNA and NO increased in HUVECs infected with Ad-KLF2-3'UTR together with control RNA. When HUVECs were infected with Ad-KLF2-3'UTR together with pre-92a, the induction of eNOS mRNA and the associated NO was much reduced. However, such an induction was not affected if pre-92a was cotransfected with Ad-KLF2 lacking 3'UTR (Figure II in the online-only Data Supplement).

To determine the role of miR-92a in regulating vascular functions in vivo, we delivered pre-92a into the mouse carotid artery by a local delivery system. Carotid arteries were used because the associated flow conditions are well defined,²⁹ and gene expression in these vessels can be manipulated by Pluronic gel-based delivery. As shown in Figure 6C, the expressions of KLF2 and eNOS were significantly lower in vessels receiving pre-92a. The flow-mediated vasodilation was then investigated. As shown in Figure 6D and Table I in the online-only Data Supplement, the flow-induced vasodilation was suppressed in vessels transfected with pre-92a compared with those of control RNA. *N*^G-Nitro-L-arginine methyl ester (L-NAME) was used to examine whether the

inhibitory effect of miR-92a was due to the eNOS suppression. Introduction of L-NAME into the system decreased the flow-induced vasodilation in carotid arteries treated with control RNA but had little effect on vessels receiving pre-92a. In addition, acetylcholine induced the dilation of vessels administered with control RNA but not those with pre-92a. These results indicate that miR-92a is critical in regulating the eNOS-dependent vasodilation responding to flow.

Discussion

Shear stress with a forward direction has been shown to upregulate KLF2 in ECs,⁵⁻⁷ which in turn modulates the expression of $\approx 70\%$ of the genes that are responsive to shear stress.³⁰ Early studies demonstrated that shear stress enhances KLF2 transcription via the binding of several transcription factors to the promoter of the *KLF2* gene (Table II in the online-only Data Supplement). Posttranslational modifications (eg, phosphorylation and acetylation/deacetylation) of these transcription factors play important roles in changing the transcriptional activity of KLF2.^{13,31} Results from the present study show that shear stress also regulates KLF2 expression at the posttranscriptional level,

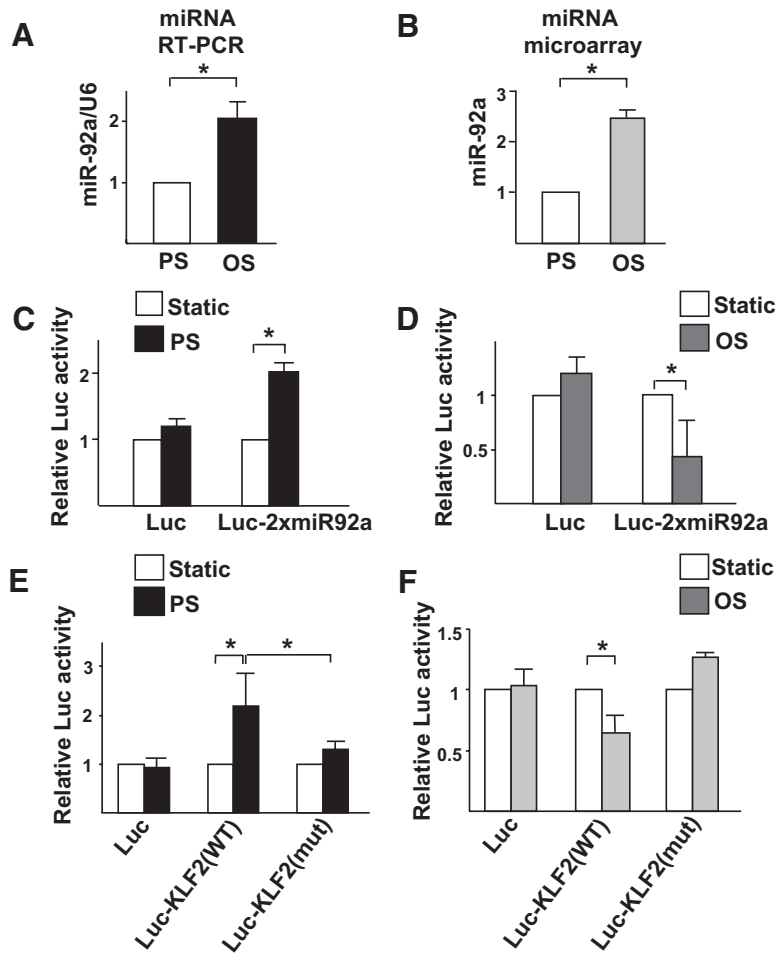


Figure 4. Pulsatile shear flow (PS) downregulates but oscillatory shear flow (OS) upregulates microRNA-92a (miR-92a) expression in ECs. **A**, Human umbilical vein endothelial cells were exposed to PS (12 ± 4 dyne/cm²) or OS (0 ± 4 dyne/cm²) for 8 hours. Quantitative real-time polymerase chain reaction (RT-PCR) was performed to detect the level of miR-92a, which was normalized to that of U6 RNA. **B**, The expression of miR-92a in endothelial cells exposed to PS or OS flow assessed by microRNA (miRNA) microarray. **C** and **D**, Bovine aortic endothelial cells were transfected with Luc-2×miR92 reporter or control plasmid for 24 hours and then exposed to PS or OS flow for 12 hours. The luciferase (Luc) activity was measured and normalized to β-gal activity. **E** and **F**, Bovine aortic endothelial cells were transfected with Luc-KLF2(WT) or Luc-KLF2(mut) for 24 hours and then exposed to PS or OS flow for 12 hours. The luciferase activity was measured and normalized to β-gal activity. The data represent mean±SD from 3 independent experiments. **P*<0.05 between the 2 groups being compared by Student *t* test (**A** and **B**) or 2-way ANOVA (**C** through **F**) followed by the Bonferroni post hoc test. KLF2 indicates Krüppel-like factor 2.

which is mediated by the decreased level of miR-92a. Thus, the expression of KLF2 can be modulated at multiple levels, including transcriptional, posttranscriptional via miR-92a, and posttranslational modifications.

miR-92a belongs to the miR-17–92 cluster. Also known as oncomiR-1, the miR-17–92 cluster is located in the third intron of the C13orf25 locus at 13q31–q32.³² Overexpression of miR-92a in ECs blocks angiogenesis in vitro and in vivo,²⁷ which suggests that miR-92a is a negative regulator of some endothelial functions. It has since been found that other

miRNAs of the miR-17–92 cluster, such as miR-17, -18a, -19a, and -20a, are also antiangiogenic.³³ Sharing the same promoter, various miRNAs within the miR-17–92 cluster would be suppressed by PS and/or induced by OS in a similar manner. Indeed, the expression of miR-17, -18a, -19b, and -20a in HUVECs was downregulated by PS but upregulated by OS (Figure III in the online-only Data Supplement). However, other miRNAs within the miR-17–92 cluster may not target KLF2 mRNA because only the seed sequence of miR-92a is complementary to the KLF2 3'UTR.

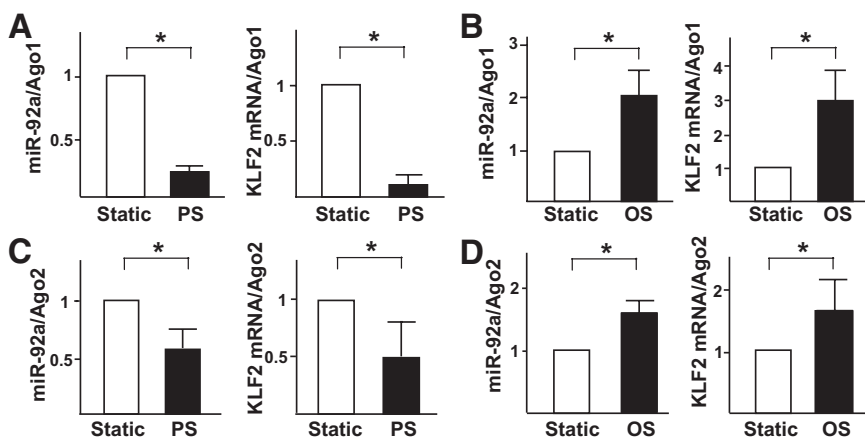


Figure 5. MicroRNA (miR)-induced silencing complex regulates microRNA-92a (miR-92a). Human umbilical vein endothelial cells were exposed to pulsatile shear flow (PS) (**A** and **C**) or oscillatory shear flow (OS) (**B** and **D**) for 8 hours. The Ago1- or Ago2-associated microRNAs and mRNAs were enriched by immunoprecipitation with the use of anti-Ago1 (**A** and **B**) or anti-Ago2 (**C** and **D**). Levels of miR-92a and KLF2 mRNA were detected by quantitative real-time polymerase chain reaction and normalized to those of Ago1 or Ago2 protein. The data represent mean±SD from 3 independent experiments. **P*<0.05 for PS or OS vs static control, as analyzed by Student *t* test.

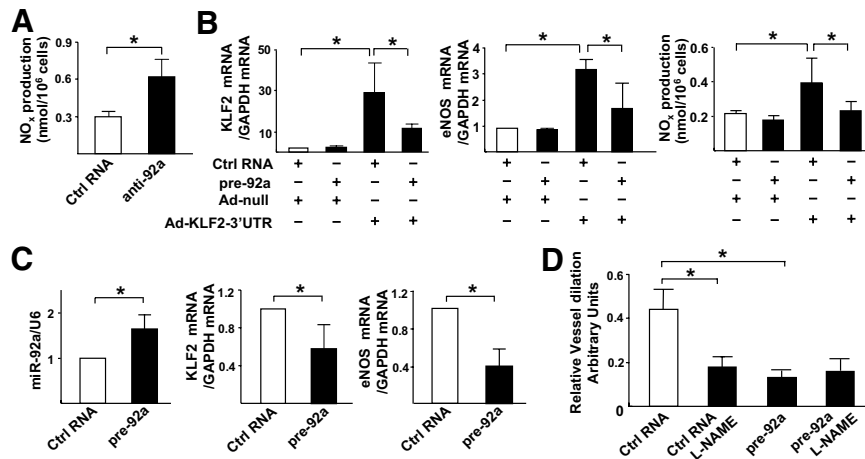


Figure 6. MicroRNA-92a (miR-92a) regulates endothelial function in vitro and ex vivo. **A**, Human umbilical vein endothelial cells were transfected with control (Ctrl) RNA or miR-92a inhibitor (anti-92a). After 48 hours, the NO bioavailability was detected by fluorometric assay and expressed as nmol/10⁶ cells. In **B**, human umbilical vein endothelial cells were transfected with miR-92a precursor (pre-92a) and infected with Ad-KLF2-3'UTR or Ad-null for 48 hours. The level of Krüppel-like factor 2 (KLF2) and endothelial nitric oxide synthase (eNOS) mRNA was assessed by quantitative real-time polymerase chain reaction, and NO bioavailability was measured. **C**, Pre-92a or control RNA was administered to the carotid arteries of C57BL6 mice by Pluronic gel F-127. Five days later, the arteries were isolated. The expression levels of miR-92a, KLF2, and eNOS in the isolated vessels (n=6) were assessed by quantitative real-time polymerase chain reaction. miR-92a level was normalized to that of U6 RNA, whereas KLF2 and eNOS levels were normalized to that of GAPDH. The data represent mean±SD. **D**, The flow-induced vasodilation ex vivo was measured by use of the SoftEdge Acquisition Subsystem in the presence or absence of N^G-nitro-L-arginine methyl ester (L-NAME) (1 μmol/L). The dilation ability is defined as the percentage of the diameter change of the flow-induced dilation compared with the diameter change of the phenylephrine-induced constriction. The bars represent mean±SEM. *P<0.05 between the 2 groups compared by Student *t* test (**A**, **C**) or 2-way ANOVA followed by the Bonferroni post hoc test (**B** and **D**).

The expression of the miR-17-92 cluster can be modulated by several transcription factors or signaling molecules. Overexpression of c-Myc, cyclin D1, and E2F increased the expression of the miR-17-92 cluster in cancer cells.³⁴⁻³⁶ ChIP assay has shown the binding of c-Myc, E2F, and cyclin D1 to the upstream promoter region of the miR-17-92 cluster. In addition, a stat3 binding site is present in this promoter.³⁷ Given the positive effect of c-Myc, cyclin D1, E2F, and stat3 on the induction of the miR-17-92 cluster, one would assume that OS upregulates and that PS downregulates these proteins. Prolonged laminar flow has been shown to suppress the expression of these proteins.³⁸⁻⁴⁰ Because miR-92a targets the KLF2 3'UTR, the PS downregulation of miR-92a should lead to an elevation of KLF2 expression at the posttranscriptional level. Consequently, the “desuppressed” KLF2 transactivates its target genes (eg, eNOS and thrombomodulin), which are otherwise suppressed under static or OS conditions. In addition to the regulation of NO and its consequent vasodilation, this mechanism involving miR-92a targeting KLF2 may also regulate other KLF2-dependent genes such as von Willebrand factor, FLK1, and Tie-2, which are critical for EC lineage development and vascular functions.^{27,41,42}

The results presented in Figures 2 and 3 show that miR-92a regulates KLF2 at both mRNA and protein levels. When assembled into miRISC, the mature miRNAs can cause the degradation of their target mRNAs or interfere with the translational process.¹⁵⁻¹⁷ Among the Ago family members, Ago1 mediates the miRNA-induced translational inhibition.^{16,43} Recent studies have shown that the Ago1-involved miRISC could also destabilize target mRNAs by deadenylation and 5'→3' decay after decapping.^{16,43} Neither of the mechanisms requires a perfect match between miRNAs and

the 3'UTR of the targeted mRNAs. However, mRNA degradation modulated by Ago2 requires a near-perfect complementary sequence in the 3'UTR of the target.^{44,45} The miR-92a/KLF2 mRNA targeting lacks a perfect match because only the seed region of miR-92a (8 nucleotides) is complementary to the KLF2 3'UTR. The RNA chaperone model⁴⁶ suggests that Ago1 may facilitate the association of the guide strand of miR-92a with the KLF2 mRNA, and then Ago2 is recruited to the miRISC complex. This model explains the increased association of miR-92a and KLF2 mRNA with both Ago1 and Ago2 in ECs under OS (Figure 5B and 5D).

On the basis of the knowledge gained from the present study and those in the literature, Figure 7 is drawn to summarize a network of molecular events leading to the induction of KLF2 in ECs by atheroprotective flow. Among the transcription factors modulated by the imposed flow, some are directly involved in the induction of the *klf2* gene (Table II in the online-only Data Supplement), whereas others may downregulate the miR-17-92 cluster (Table III in the online-only Data Supplement). In this model, the upregulated KLF2, functioning as a transcription factor, transactivates a panel of genes related to EC lineage, as well as miRNAs.⁴⁷ Recently, Harris et al⁴⁸ showed that KLF2 regulates the transcription of miR-126. In addition to miR-126, bioinformatics analysis revealed a set of shear stress-upregulated miRNAs that have the KLF2 binding site in their promoter region (Table IV in the online-only Data Supplement). Moreover, the downregulation of miR-92a leads to augmentation of IGTA5 (beneficial),²⁷ and upregulation of miR-126 results in attenuation of Spred1 (detrimental).⁴⁷ Collectively, these miRNA-regulated events and KLF2 targets (eg, eNOS

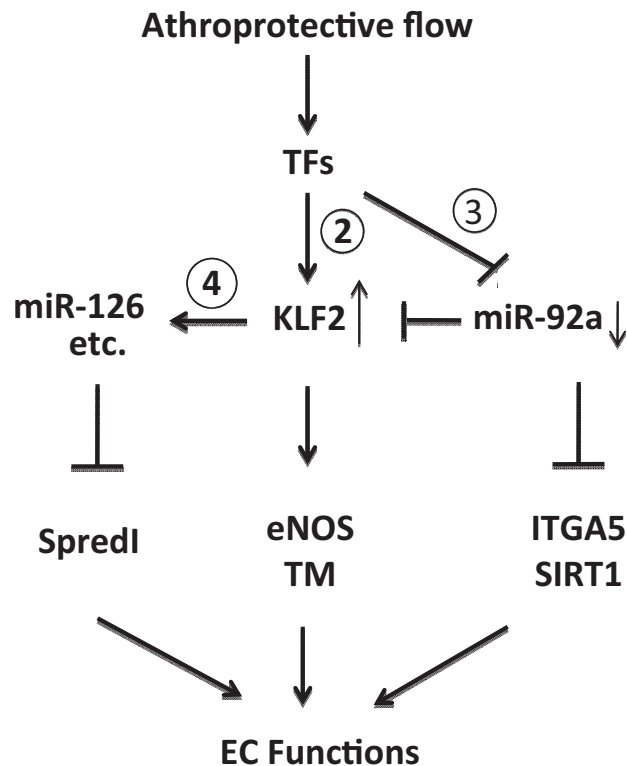


Figure 7. Shear stress regulation of Krüppel-like factor 2 (KLF2). The diagram shows the regulatory circuitry of the responses of transcription factors (TFs) and microRNAs to atheroprotective shear flow. The circled numerals refer to the numbers in the tables in the online-only Data Supplement. Shear stress with a forward direction regulates the expressions of KLF2 and microRNA-92a (miR-92a) through several transcription factors (Tables II and III in the online-only Data Supplement, respectively). Serving as a transcription factor, KLF2 reactivates the expression of downstream genes such as endothelial nitric oxide synthase (eNOS) and thrombomodulin (TM). In addition, KLF2 may bind to the promoter region of some microRNAs, including miR-126, to upregulate their transcription directly (Table IV in the online-only Data Supplement). In turn, the network of KLF2 and microRNAs regulates the expression of factors that control anti-inflammatory, antithrombotic, antiproliferative, angiogenic, antioxidant, and antifibrotic effects to maintain endothelial cell (EC) functions. The methods for computational analysis are described in the online-only Data Supplement.

and thrombomodulin) maintain endothelial homeostasis and some aspects of the EC lineage.

Sources of Funding

This work was supported in part by National Institutes of Health grants HL89940 and HL106579 (to Drs Chien and Shyy) and HL076686 (to Dr Garcia-Cardena); an Ibercaja Research Fellowship, the Red Heracles de Investigación Cardiovascular, and the Research Foundation of the Hospital Clínico Universitario de Valencia (Spain; to A.L.-F.); the Howard Hughes Medical Institute Research Training Fellowship for Medical Students and a Seed Training grant from the American Medical Association (to G.V.); and Taiwan National Science Council I-RiCE Program grant NSC-99-2911-I-009-101 (to Dr Huang).

Disclosures

None.

References

- Caro CG, Fitz-Gerald JM, Schroter RC. Atheroma and arterial wall shear: observation, correlation and proposal of a shear dependent mass transfer mechanism for atherogenesis. *Proc R Soc Lond B Biol Sci.* 1971;177:109–159.
- Zarins CK, Giddens DP, Bharadvaj BK, Sottiurai VS, Mabon RF, Glagov S. Carotid bifurcation atherosclerosis: quantitative correlation of plaque localization with flow velocity profiles and wall shear stress. *Circ Res.* 1983;53:502–514.
- Ku DN, Giddens DP, Zarins CK, Glagov S. Pulsatile flow and atherosclerosis in the human carotid bifurcation: positive correlation between plaque location and low oscillating shear stress. *Arteriosclerosis.* 1985;5:293–302.
- Asakura T, Karino T. Flow patterns and spatial distribution of atherosclerotic lesions in human coronary arteries. *Circ Res.* 1990;66:1045–1066.
- Atkins GB, Jain MK. Role of Kruppel-like transcription factors in endothelial biology. *Circ Res.* 2007;100:1686–1695.
- Nayak L, Lin Z, Jain MK. ‘Go with the flow’: how Krüppel-like factor 2 regulates the vasoprotective effects of shear stress. *Antioxid Redox Signal.* October 4, 2010. DOI: 10.1089/ars.2010.3647.
- Boon RA, Horrevoets AJ. Key transcriptional regulators of the vasoprotective effects of shear stress. *Hamostaseologie.* 2009;29:39–43.
- Yan C, Takahashi M, Okuda M, Lee JD, Berk BC. Fluid shear stress stimulates big mitogen-activated protein kinase 1 (BMK1) activity in endothelial cells: dependence on tyrosine kinases and intracellular calcium. *J Biol Chem.* 1999;274:143–150.
- Kato Y, Zhao M, Morikawa A, Sugiyama T, Chakravorty D, Koide N, Yoshida T, Tapping RI, Yang Y, Yokochi T, Lee JD. Big mitogen-activated kinase regulates multiple members of the MEF2 protein family. *J Biol Chem.* 2000;275:18534–18540.
- Kumar A, Lin Z, SenBanerjee S, Jain MK. Tumor necrosis factor alpha-mediated reduction of KLF2 is due to inhibition of MEF2 by NF-kappaB and histone deacetylases. *Mol Cell Biol.* 2005;25:5893–5903.
- Yang CC, Ornatsky OI, McDermott JC, Cruz TF, Prody CA. Interaction of myocyte enhancer factor 2 (MEF2) with a mitogen-activated protein kinase, ERK5/BMK1. *Nucleic Acids Res.* 1998;26:4771–4777.
- Sohn SJ, Li D, Lee LK, Winoto A. Transcriptional regulation of tissue-specific genes by the ERK5 mitogen-activated protein kinase. *Mol Cell Biol.* 2005;25:8553–8566.
- Young A, Wu W, Sun W, Larman HB, Wang N, Li YS, Shyy JY, Chien S, Garcia-Cardena G. Flow activation of AMP-activated protein kinase in vascular endothelium leads to Kruppel-like factor 2 expression. *Arterioscler Thromb Vasc Biol.* 2009;29:1902–1908.
- van Thienen JV, Fledderus JO, Dekker RJ, Rohlena J, van Ijzendoorn GA, Kootstra NA, Pannekoek H, Horrevoets AJ. Shear stress sustains atheroprotective endothelial KLF2 expression more potently than statins through mRNA stabilization. *Cardiovasc Res.* 2006;72:231–240.
- Chekulaeva M, Filipowicz W. Mechanisms of miRNA-mediated post-transcriptional regulation in animal cells. *Curr Opin Cell Biol.* 2009;21:452–460.
- Filipowicz W, Bhattacharyya SN, Sonenberg N. Mechanisms of post-transcriptional regulation by microRNAs: are the answers in sight? *Nat Rev Genet.* 2008;9:102–114.
- Nilsen TW. Mechanisms of microRNA-mediated gene regulation in animal cells. *Trends Genet.* 2007;23:243–249.
- Suarez Y, Fernandez-Hernando C, Pober JS, Sessa WC. Dicer dependent microRNAs regulate gene expression and functions in human endothelial cells. *Circ Res.* 2007;100:1164–1173.
- Harris TA, Yamakuchi M, Ferlito M, Mendell JT, Lowenstein CJ. MicroRNA-126 regulates endothelial expression of vascular cell adhesion molecule 1. *Proc Natl Acad Sci U S A.* 2008;105:1516–1521.
- Kuehbachner A, Urbich C, Zeiher AM, Dimmeler S. Role of Dicer and Drosha for endothelial microRNA expression and angiogenesis. *Circ Res.* 2007;101:59–68.
- Sen CK, Gordillo GM, Khanna S, Roy S. Micromanaging vascular biology: tiny microRNAs play big band. *J Vasc Res.* 2009;46:527–540.
- Weber M, Baker MB, Moore JP, Searles CD. MiR-21 is induced in endothelial cells by shear stress and modulates apoptosis and eNOS activity. *Biochem Biophys Res Commun.* 2010;393:643–648.
- Qin X, Wang X, Wang Y, Tang Z, Cui Q, Xi J, Li YS, Chien S, Wang N. MicroRNA-19a mediates the suppressive effect of laminar flow on cyclin D1 expression in human umbilical vein endothelial cells. *Proc Natl Acad Sci U S A.* 2010;107:3240–3244.

24. Wang KC, Garmire LX, Young A, Nguyen P, Trinh A, Subramaniam S, Wang N, Shyy JY, Li YS, Chien S. Role of microRNA-23b in flow-regulation of Rb phosphorylation and endothelial cell growth. *Proc Natl Acad Sci U S A*. 2010;107:3234–3239.
25. Fang Y, Shi C, Manduchi E, Civelek M, Davies PF. MicroRNA-10a regulation of proinflammatory phenotype in athero-susceptible endothelium in vivo and in vitro. *Proc Natl Acad Sci U S A*. 2010;107:13450–13455.
26. Bonauer A, Dimmeler S. The microRNA-17–92 cluster: still a miRacle? *Cell Cycle*. 2009;8:3866–3873.
27. Bonauer A, Carmona G, Iwasaki M, Mione M, Koyanagi M, Fischer A, Burchfield J, Fox H, Doebele C, Ohtani K, Chavakis E, Potente M, Tjwa M, Urbich C, Zeiher AM, Dimmeler S. MicroRNA-92a controls angiogenesis and functional recovery of ischemic tissues in mice. *Science*. 2009;324:1710–1713.
28. Frangos JA, Eskin SG, McIntire LV, Ives CL. Flow effects on prostacyclin production by cultured human endothelial cells. *Science*. 1985;227:1477–1479.
29. Quan A, Ward ME, Kulandavelu S, Adamson SL, Langille BL. Endothelium-independent flow-induced dilation in the mouse carotid artery. *J Vasc Res*. 2006;43:383–391.
30. Fledderus JO, Boon RA, Volger OL, Hurtila H, Yla-Herttuala S, Pannekoek H, Levenon AL, Horrevoets AJ. KLF2 primes the antioxidant transcription factor Nrf2 for activation in endothelial cells. *Arterioscler Thromb Vasc Biol*. 2008;28:1339–1346.
31. Wang W, Ha CH, Jhun BS, Wong C, Jain MK, Jin ZG. Fluid shear stress stimulates phosphorylation-dependent nuclear export of HDAC5 and mediates expression of KLF2 and eNOS. *Blood*. 2010;115:2971–2979.
32. He L, Thomson JM, Hemann MT, Hernando-Monge E, Mu D, Goodson S, Powers S, Cordon-Cardo C, Lowe SW, Hannon GJ, Hammond SM. A microRNA polycistron as a potential human oncogene. *Nature*. 2005;435:828–833.
33. Doebele C, Bonauer A, Fischer A, Scholz A, Reiss Y, Urbich C, Hofmann WK, Zeiher AM, Dimmeler S. Members of the microRNA-17–92 cluster exhibit a cell-intrinsic antiangiogenic function in endothelial cells. *Blood*. 2010;115:4944–4950.
34. O'Donnell KA, Wentzel EA, Zeller KI, Dang CV, Mendell JT. c-Myc-regulated microRNAs modulate E2F1 expression. *Nature*. 2005;435:839–843.
35. Yu Z, Wang C, Wang M, Li Z, Casimiro MC, Liu M, Wu K, Whittle J, Ju X, Hyslop T, McCue P, Pestell RG. A cyclin D1/microRNA 17/20 regulatory feedback loop in control of breast cancer cell proliferation. *J Cell Biol*. 2008;182:509–517.
36. Sylvestre Y, De Guire V, Querido E, Mukhopadhyay UK, Bourdeau V, Major F, Ferbeyre G, Chartrand P. An E2F/miR-20a autoregulatory feedback loop. *J Biol Chem*. 2007;282:2135–2143.
37. Brock M, Trenkmann M, Gay RE, Michel BA, Gay S, Fischler M, Ulrich S, Speich R, Huber LC. Interleukin-6 modulates the expression of the bone morphogenic protein receptor type II through a novel STAT3-microRNA cluster 17/92 pathway. *Circ Res*. 2009;104:1184–1191.
38. Magid R, Murphy TJ, Galis ZS. Expression of matrix metalloproteinase-9 in endothelial cells is differentially regulated by shear stress: role of c-Myc. *J Biol Chem*. 2003;278:32994–32999.
39. Akimoto S, Mitsumata M, Sasaguri T, Yoshida Y. Laminar shear stress inhibits vascular endothelial cell proliferation by inducing cyclin-dependent kinase inhibitor p21(Sdi1/Cip1/Waf1). *Circ Res*. 2000;86:185–190.
40. Ni CW, Hsieh HJ, Chao YJ, Wang DL. Shear flow attenuates serum-induced STAT3 activation in endothelial cells. *J Biol Chem*. 2003;278:19702–19708.
41. Dekker RJ, Boon RA, Rondaij MG, Kragt A, Volger OL, Elderkamp YW, Meijers JC, Voorberg J, Pannekoek H, Horrevoets AJ. KLF2 provokes a gene expression pattern that establishes functional quiescent differentiation of the endothelium. *Blood*. 2006;107:4354–4363.
42. Parmar KM, Larman HB, Dai G, Zhang Y, Wang ET, Moorthy SN, Kratz JR, Lin Z, Jain MK, Gimbrone MA Jr, Garcia-Cardena G. Integration of flow-dependent endothelial phenotypes by Kruppel-like factor 2. *J Clin Invest*. 2006;116:49–58.
43. Fabian MR, Sonenberg N, Filipowicz W. Regulation of mRNA translation and stability by microRNAs. *Annu Rev Biochem*. 2010;79:351–379.
44. Liu J, Carmell MA, Rivas FV, Marsden CG, Thomson JM, Song JJ, Hammond SM, Joshua-Tor L, Hannon GJ. Argonaute2 is the catalytic engine of mammalian RNAi. *Science*. 2004;305:1437–1441.
45. Meister G, Landthaler M, Patkaniowska A, Dorsett Y, Teng G, Tuschl T. Human Argonaute2 mediates RNA cleavage targeted by miRNAs and siRNAs. *Mol Cell*. 2004;15:185–197.
46. Wang B, Li S, Qi HH, Chowdhury D, Shi Y, Novina CD. Distinct passenger strand and mRNA cleavage activities of human Argonaute proteins. *Nat Struct Mol Biol*. 2009;16:1259–1266.
47. Nicoli S, Standley C, Walker P, Hurlstone A, Fogarty KE, Lawson ND. MicroRNA-mediated integration of haemodynamics and VEGF signalling during angiogenesis. *Nature*. 2010;464:1196–1200.
48. Harris TA, Yamakuchi M, Kondo M, Oettgen P, Lowenstein CJ. Ets-1 and Ets-2 regulate the expression of microRNA-126 in endothelial cells. *Arterioscler Thromb Vasc Biol*. 2010;30:1990–1997.

CLINICAL PERSPECTIVE

Upregulated by atheroprotective flow, the transcription factor Kruppel-like factor 2 (KLF2) is a crucial integrator for maintaining endothelial functions. MicroRNAs are noncoding small RNAs that regulate gene expression at the posttranscriptional level. In the present study, we examined the role of microRNA-92a (miR-92a) in the atheroprotective flow-regulated KLF2. Overexpression of miR-92a precursor decreased the expression of KLF2 and the KLF2-regulated endothelial nitric oxide synthase and thrombomodulin in vascular endothelial cells. In contrast, miR-92a inhibitor increased the expression of KLF2, endothelial nitric oxide synthase, and thrombomodulin. The clinical implication is that atheroprotective flow downregulated the level of miR-92a, which in turn induced KLF2. Furthermore, overexpression of KLF2 rescued the miR-92a precursor-suppressed KLF2 and endothelial nitric oxide synthase mRNA and nitric oxide production, demonstrating that miR-92a directly targets KLF2 and hence affects the KLF2-mediated endothelial functions. Consistent with these findings, mouse carotid arteries receiving miR-92a precursor exhibited impaired vasodilatory response to flow. This newly defined miR-92a/KLF2 pathway suggests that miR-92a may be a therapeutic target to improve vascular functions.

SUPPLEMENTAL MATERIAL

Supplemental Methods

Cell cultures

HUVECs, bovine aortic ECs (BAECs), and human embryonic kidney 293 (HEK293) cells were cultured by standard methods¹.

Plasmid construction and luciferase assay

The Luc-KLF2 reporter was constructed by inserting the full-length human KLF2 3'UTR into pMIR-REPORT vector (Ambion). The FLAG-KLF2 plasmid was constructed by fused a CMV-driven FLAG tag with KLF2 cDNA (including 3'UTR). Luc-KLF2 (Luc-mut) and FLAG-KLF2(mut) with a mutated miR-92a binding site were created by using QuickChange site-directed mutagenesis (Stratagene, La Jolla, CA). The deletion of the miR-92a binding site in FLAG-KLF2(Δ) was constructed by two-step PCR². The miR-92a reporter (Luc-92a) contained a luciferase reporter and 2 copies of sequences complementary to miR-92a (Luc-2xmiR92a). The reporter constructs were co-transfected with pre-92a or anti-92a (20 nM) into HEK293 cells or BAECs by use of lipofectamine 2000 (Invitrogen). Luciferase expression was measured by luciferase reporter and β -galactosidase enzyme assays (Promega, Madison, WI).

Computational analysis for KLF2-regulated miRNAs

The transcriptional start sites (TSSs) of the selected miRNAs were obtained from miRStart database (<http://mirstart.mbc.nctu.edu.tw/>), which contains the predicted promoters of human miRNAs. The miRNA promoters were identified by the supports of several experimental datasets derived from TSS-relevant experiments, including CAGE tags, TSS Seq tags and CHIP-seq of H3K4me3 enrichment.

JASPAR³ was utilized to identify the potential binding sites of KLF2 within the promoter regions (flanking -3000~+500 according to TSS) of the reported shear-regulated miRNAs. The position weighted matrix (PWM) of KLF4 was used to identify KLF2-regulated miRNAs since the binding motifs of KLF2 and KLF4 are highly similar.

Immunoprecipitation (IP)-miR-induced silencing complex (miRISC)

HUVECs were harvested with the lysis buffer containing 50 mM Tris, pH 7.5, 150 mM NaCl, 0.1% NP-40, 1 mM EDTA, and 100 units/ μ l RNase inhibitor. The lysates were incubated with anti-Ago1 or Ago2 antibody (2 μ g/mg protein) (Cell Signaling) at 4°C overnight and then protein A agarose beads (25 μ l beads per ml) for 4 hr. The beads were then spun down and the immunoprecipitated RNAs were extracted with Trizol reagent (Invitrogen).

NO bioavailability assay

The NO production from cells was detected as the accumulated nitrite/nitrate, the

stable breakdown product of NO, in cell culture media by using nitrate/nitrite fluorometric assay (Cayman Chemicals, Ann Arbor, MI). HUVECs were transfected with pre-92a or control RNA and infected with Ad-KLF2 or Ad-GFP for 48 hr. The DMEM in the absence of FBS and phenol red was then substituted and incubated further for 16 hr. The conditioned medium was filtered through a 10 KD MW cut-off filter (Millipore) to remove ingredients that caused an interference of the fluorescence intensity. Nitrate was first reduced to nitrite by nitrate reductase, and then the total nitrite concentration was determined by forming the fluorescent product with 2,3-Diaminonaphthalene (DAN). The fluorescent readings were obtained using SpectraMax M5 Multi-Detection Reader (BD Biosciences, Palo Alto, CA) with excitation at 360 nm and emission at 430 nm. The readings were normalized to the total cell number. The NO_x concentrations were then calculated according to an established calibration curve.

Flow-induced vasodilation

The animal experimental protocols were approved by the Institutional Animal Care and Use Committee of University of California, Riverside. F-127 pluronic gel (Sigma) was used to deliver pre-92a into the carotid artery of 7- to 10-week old male C57BL6 mice⁴. Five days after the local oligo delivery, animals were killed and the pluronic gel-coated vessels were isolated. For the flow-induced vasodilation, the isolated mouse carotid arteries were mounted on 2 glass cannulae in a perfusion myograph chamber connected to the SoftEdge

Acquisition Subsystem (Living Systems, Burlington, VT). The vessel chamber was perfused with warmed physiological salt solution containing 130 mM NaCl, 10 mM HEPES, 6 mM glucose, 4 mM KCl, 4 mM NaHCO₃, 1.8 mM CaCl₂, 1.18 mM KH₂PO₄, 1.2 mM MgSO₄, and 0.025 mM EDTA, pH 7.4. Images of carotid arteries were obtained by a video camera attached to a Nikon TS100 inverted microscope. A video dimension analyzer (Living System) was used to measure the external diameter of arteries, and data were collected by use of BioPac MP100 hardware and Biopac AcqKnowledge software (BioPac, Goleta, CA). The arteries were maintained at an intraluminal pressure of 100 mmHg for the duration of the experiment, then equilibrated for 30 min before extraluminal administration of 1 μM phenylephrine (Sigma). After maximal constriction, flow rate was increased to 400 μl/min, which corresponds to the physiological range in mouse carotid arteries⁵. L-NAME (1 mM), acetylcholine (1 μM), and sodium nitroprusside (SNP) (1 μM) was applied. The vessel diameter changes induced by flow were then recorded.

Supplemental Table 1: Flow-induced dilation of carotid arteries

	Treatment	n*	Diameter (μm)	
			Control RNA	Pre-92a
Control	Initial	9	306.0 \pm 7.1	298.3 \pm 6.9
	Constricted	9	274.3 \pm 7.6	251.9 \pm 9.9
	Δ constriction [†]	9	30.7 \pm 5.4	46.4 \pm 11.1
	Post-flow	9	285.9 \pm 8.6	257.1 \pm 9.3
	Δ dilation [†]	9	11.6 \pm 2.2	5.2 \pm 1.6
	Dilation ability [‡]	9	43.7% \pm 9.3%	11.9% \pm 3.0% [§]
L-NAME	Initial	5	298.0 \pm 9.1	299.0 \pm 9.5
	Constricted	5	243.8 \pm 8.4	238.8 \pm 8.5
	Δ constriction [†]	5	34.8 \pm 5.0	38.4 \pm 12.4
	Post-flow	5	250.4 \pm 6.5	243.2 \pm 7.6
	Δ dilation [†]	5	6.8 \pm 2.2	5.4 \pm 2.0
	Dilation ability [‡]	5	18.1% \pm 5.5% [§]	15.6% \pm 5.4%
Ach	Constricted	5	274.4 \pm 7.8	264.7 \pm 7.0
	Ach	5	289.1 \pm 8.6	263.0 \pm 9.6
	Δ dilation [†]	5	14.7 \pm 1.8	-1.7 \pm 6.5
SNP	Constricted	5	254.9 \pm 9.0	252.0 \pm 6.7
	SNP	5	294.7 \pm 7.0	298.9 \pm 7.5
	Δ dilation [†]	5	40.0 \pm 6.0	46.7 \pm 5.9

* n denotes the number of animals

[†] Δ : the diameter changes of the carotid arteries after the treatment.

[‡] Dilation ability: the diameter change of the flow-induced dilation compared to the diameter change of the PE-induced constriction.

[§] $p < 0.05$ pre-92a treated group vs. corresponding control group; L-NAME treated group vs. non-treated control group.

Data are presented as mean \pm SEM.

Supplemental Table 2. Transcription factors regulating KLF2

TF	Regulation mode	Shear regulated	References
MEF2A	Activated	yes	6-8
MEF2C	Activated	yes	6-8
BRG1	Unspecified	unknown	9
p300	Activated	yes	10-13
PCAF	Activated	Yes	11,13
hnRNP D	Activated	Yes	11,13
hnRNP U	Activated	Yes	11,13
Nucleolin	Activated	Yes	14
SP1	Activated	yes	15
Oct-3/4	Activated	unknown	16-19
SOX2	Activated	unknown	16,17,20

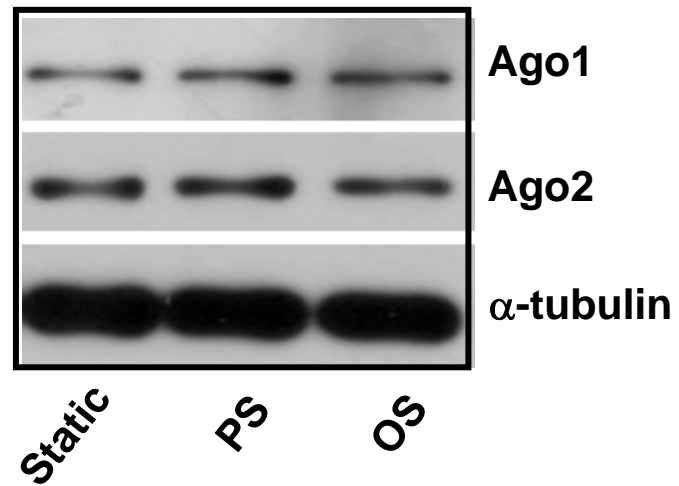
Supplemental Table 3. Transcription factors regulating the miR-17~92 cluster

TF	Regulation mode	Shear inducible	References
c-Myc	Activated	Inhibited	21,22
E2F	Activated	Inhibited	23,24
STAT3	Activated	Inhibited	25,26
cyclin D1	Activated	Inhibited	27
P53	Inhibited	Activated	28,29
RUNX1	Inhibited	Inhibited	30
ATF2	Predicted	Inhibited	31
CREB	Predicted	Activated	32
PPARG	Predicted	Inhibited	33
SP1	Predicted	Activated	34

Supplemental Table 4. KLF2-targeted miRNAs

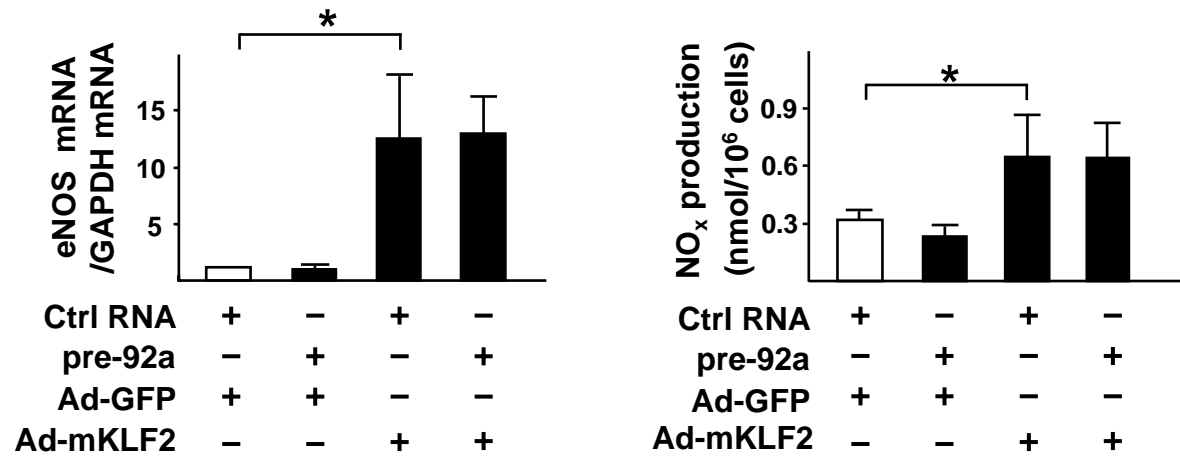
Gene	Host gene	function	Validated	Reference
hsa-miR-126	Egfl7	Angiogenesis Anti-inflammation	Yes	35,36
hsa-miR-30a	C6orf155	angiogenesis	predicted	36-38
hsa-miR-483-5p	IGF2	metabolism	predicted	39
hsa-miR-101-1	Intergenic	Cell growth	predicted	37,40
hsa-miR-181d	Intergenic	differentiation	predicted	37,41
hsa-miR-15a	DLEU2	apoptosis	predicted	37,42
hsa-miR-148a	Intergenic	Cell survival	predicted	37,43
hsa-miR-365-1	Intergenic	unknown	predicted	37

Supple Fig. 1



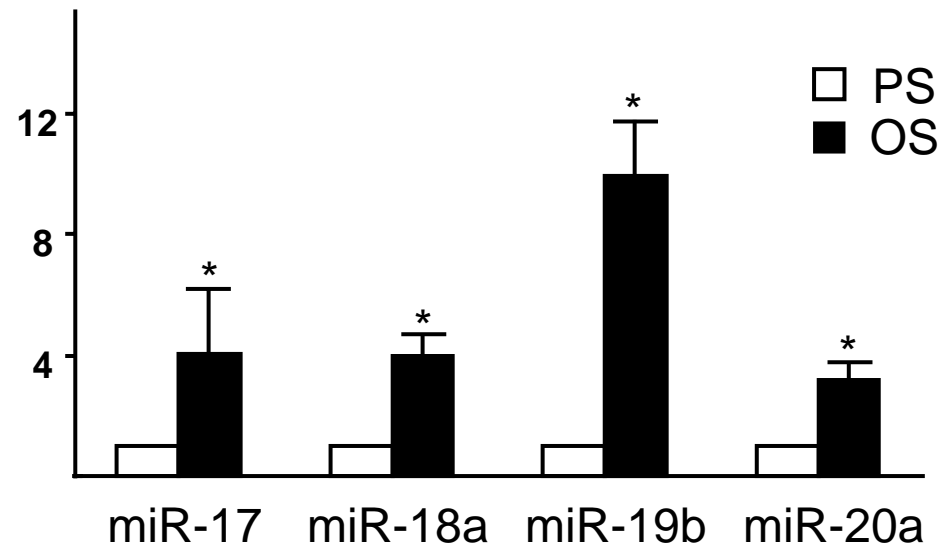
Supple Fig. 1. HUVECs were exposed to a PS (12 ± 4 dyn/cm²) or OS (0 ± 4 dyn/cm²) for 8 hr and then lysed. Protein levels of Ago1 and Ago2 assessed by Western blot analysis with anti-Ago1 and anti-Ago2 and normalized to that of α -tubulin.

Suppl. Fig. 2



Supple Fig. 2. HUVECs were transfected with pre-92a (20 nM) and infected with Ad-mKLF2 (without 3'UTR) (ref. 44) or Ad-GFP (10 MOI) for 48 hr. The level of eNOS mRNA was assessed by qRT-PCR and the released NO_x was measured by nitrate/nitrite fluorometric assay.

Supple Fig. 3



Supple Fig. 3. HUVECs were exposed to a PS (12 ± 4 dyn/cm²) or OS (0 ± 4 dyn/cm²) for 24 hr and then lysed. The amount of miRNAs were assessed by miRNA microarray. The level of ECs exposed to OS, averaged from 3 experiments was normalized to that of cells exposed to PS.

Reference

1. Gimbrone MA, Jr., Cotran RS, Folkman J. Human vascular endothelial cells in culture. Growth and DNA synthesis. *J Cell Biol.* 1974; 60:673-684.
2. Ogel ZB, McPherson MJ. Efficient deletion mutagenesis by PCR. *Protein Eng.* 1992; 5:467-468.
3. Bryne JC, Valen E, Tang MH, Marstrand T, Winther O, da Piedade I, Krogh A, Lenhard B, Sandelin A. JASPAR, the open access database of transcription factor-binding profiles: new content and tools in the 2008 update. *Nucleic Acids Res.* 2008; 36(Database issue):D102-106.
4. Forte A, Galderisi U, De Feo M, Gomez MF, Esposito S, Sante P, Renzulli A, Agozzino L, Hellstrand P, Berrino L, Cipollaro M, Cotrufo M, Rossi F, Cascino A. c-Myc antisense oligonucleotides preserve smooth muscle differentiation and reduce negative remodelling following rat carotid arteriotomy. *J Vasc Res.* 2005; 42:214-225.
5. Eitzman DT, Bodary PF, Shen Y, Khairallah CG, Wild SR, Abe A, Shaffer-Hartman J, Shayman JA. Fabry disease in mice is associated with age-dependent susceptibility to vascular thrombosis. *J Am Soc Nephrol.* 2003; 14:298-302.
6. Sako K, Fukuhara S, Minami T, Hamakubo T, Song H, Kodama T, Fukamizu A, Gutkind JS, Koh GY, Mochizuki N. Angiopoietin-1 induces Kruppel-like factor 2 expression through a phosphoinositide 3-kinase/AKT-dependent activation of myocyte

- enhancer factor 2. *J Biol Chem.* 2009; 284:5592-5601.
7. Kumar A, Lin Z, SenBanerjee S, Jain MK. Tumor necrosis factor alpha-mediated reduction of KLF2 is due to inhibition of MEF2 by NF-kappaB and histone deacetylases. *Mol Cell Biol.* 2005; 25:5893-5903.
 8. Parmar KM, Larman HB, Dai G, Zhang Y, Wang ET, Moorthy SN, Kratz JR, Lin Z, Jain MK, Gimbrone MA, Jr., Garcia-Cardena G. Integration of flow-dependent endothelial phenotypes by Kruppel-like factor 2. *J Clin Invest.* 2006; 116:49-58.
 9. Kidder BL, Palmer S, Knott JG. SWI/SNF-Brg1 regulates self-renewal and occupies core pluripotency-related genes in embryonic stem cells. *Stem Cells.* 2009; 27:317-328.
 10. SenBanerjee S, Lin Z, Atkins GB, Greif DM, Rao RM, Kumar A, Feinberg MW, Chen Z, Simon DI, Luscinskas FW, Michel TM, Gimbrone MA, Jr., Garcia-Cardena G, Jain MK. KLF2 Is a novel transcriptional regulator of endothelial proinflammatory activation. *J Exp Med.* 2004; 199:1305-1315.
 11. Ahmad N, Lingrel JB. Kruppel-like factor 2 transcriptional regulation involves heterogeneous nuclear ribonucleoproteins and acetyltransferases. *Biochemistry.* 2005; 44:6276-6285.
 12. Chen W, Bacanamwo M, Harrison DG. Activation of p300 histone acetyltransferase activity is an early endothelial response to laminar shear stress and is essential for stimulation of endothelial nitric-oxide synthase mRNA transcription. *J Biol Chem.* 2008;

283:16293-16298.

- 13.** Huddleson JP, Ahmad N, Srinivasan S, Lingrel JB. Induction of KLF2 by fluid shear stress requires a novel promoter element activated by a phosphatidylinositol 3-kinase-dependent chromatin-remodeling pathway. *J Biol Chem.* 2005; 280:23371-23379.
- 14.** Huddleson JP, Ahmad N, Lingrel JB. Up-regulation of the KLF2 transcription factor by fluid shear stress requires nucleolin. *J Biol Chem.* 2006; 281:15121-15128.
- 15.** Schrick JJ, Hughes MJ, Anderson KP, Croyle ML, Lingrel JB. Characterization of the lung Kruppel-like transcription factor gene and upstream regulatory elements. *Gene.* 1999; 236:185-195.
- 16.** Liu X, Huang J, Chen T, Wang Y, Xin S, Li J, Pei G, Kang J. Yamanaka factors critically regulate the developmental signaling network in mouse embryonic stem cells. *Cell Res.* 2008; 18:1177-1189.
- 17.** Sharov AA, Masui S, Sharova LV, Piao Y, Aiba K, Matoba R, Xin L, Niwa H, Ko MS. Identification of Pou5f1, Sox2, and Nanog downstream target genes with statistical confidence by applying a novel algorithm to time course microarray and genome-wide chromatin immunoprecipitation data. *BMC Genomics.* 2008; 9:269.
- 18.** Sridharan R, Tchieu J, Mason MJ, Yachechko R, Kuoy E, Horvath S, Zhou Q, Plath K. Role of the murine reprogramming factors in the induction of pluripotency. *Cell.* 2009;

136:364-377.

19. Bruce SJ, Gardiner BB, Burke LJ, Gongora MM, Grimmond SM, Perkins AC. Dynamic transcription programs during ES cell differentiation towards mesoderm in serum versus serum-freeBMP4 culture. *BMC Genomics*. 2007; 8:365.
20. Kim J, Chu J, Shen X, Wang J, Orkin SH. An extended transcriptional network for pluripotency of embryonic stem cells. *Cell*. 2008; 132:1049-1061.
21. O'Donnell KA, Wentzel EA, Zeller KI, Dang CV, Mendell JT. c-Myc-regulated microRNAs modulate E2F1 expression. *Nature*. 2005; 435:839-843.
22. Magid R, Murphy TJ, Galis ZS. Expression of matrix metalloproteinase-9 in endothelial cells is differentially regulated by shear stress. Role of c-Myc. *J Biol Chem*. 2003; 278:32994-32999.
23. Sylvestre Y, De Guire V, Querido E, Mukhopadhyay UK, Bourdeau V, Major F, Ferbeyre G, Chartrand P. An E2F/miR-20a autoregulatory feedback loop. *J Biol Chem*. 2007; 282:2135-2143.
24. Akimoto S, Mitsumata M, Sasaguri T, Yoshida Y. Laminar shear stress inhibits vascular endothelial cell proliferation by inducing cyclin-dependent kinase inhibitor p21(Sdi1/Cip1/Waf1). *Circ Res*. 2000; 86:185-190.
25. Brock M, Trenkmann M, Gay RE, Michel BA, Gay S, Fischler M, Ulrich S, Speich R, Huber LC. Interleukin-6 modulates the expression of the bone morphogenic protein

- receptor type II through a novel STAT3-microRNA cluster 17/92 pathway. *Circ Res.* 2009; 104:1184-1191.
26. Ni CW, Hsieh HJ, Chao YJ, Wang DL. Interleukin-6-induced JAK2/STAT3 signaling pathway in endothelial cells is suppressed by hemodynamic flow. *Am J Physiol Cell Physiol.* 2004; 287:C771-780.
27. Yu Z, Wang C, Wang M, Li Z, Casimiro MC, Liu M, Wu K, Whittle J, Ju X, Hyslop T, McCue P, Pestell RG. A cyclin D1/microRNA 17/20 regulatory feedback loop in control of breast cancer cell proliferation. *J Cell Biol.* 2008; 182:509-517.
28. Yan HL, Xue G, Mei Q, Wang YZ, Ding FX, Liu MF, Lu MH, Tang Y, Yu HY, Sun SH. Repression of the miR-17-92 cluster by p53 has an important function in hypoxia-induced apoptosis. *EMBO J.* 2009; 28:2719-2732.
29. Lin K, Hsu PP, Chen BP, Yuan S, Usami S, Shyy JY, Li YS, Chien S. Molecular mechanism of endothelial growth arrest by laminar shear stress. *Proc Natl Acad Sci U S A.* 2000; 97:9385-9389.
30. Fontana L, Pelosi E, Greco P, Racanicchi S, Testa U, Liuzzi F, Croce CM, Brunetti E, Grignani F, Peschle C. MicroRNAs 17-5p-20a-106a control monocytopoiesis through AML1 targeting and M-CSF receptor upregulation. *Nat Cell Biol.* 2007; 9:775-787.
31. Fledderus JO, van Thienen JV, Boon RA, Dekker RJ, Rohlena J, Volger OL, Bijmens AP, Daemen MJ, Kuiper J, van Berkel TJ, Pannekoek H, Horrevoets AJ. Prolonged shear

- stress and KLF2 suppress constitutive proinflammatory transcription through inhibition of ATF2. *Blood*. 2007; 109:4249-4257.
32. Boo YC. Shear stress stimulates phosphorylation of protein kinase A substrate proteins including endothelial nitric oxide synthase in endothelial cells. *Exp Mol Med*. 2006; 38:453.
33. Braam B, de Roos R, Bluysen H, Kemmeren P, Holstege F, Joles JA, Koomans H. Nitric oxide-dependent and nitric oxide-independent transcriptional responses to high shear stress in endothelial cells. *Hypertension*. 2005; 45:672-680.
34. Yun S, Dardik A, Haga M, Yamashita A, Yamaguchi S, Koh Y, Madri JA, Sumpio BE. Transcription factor Sp1 phosphorylation induced by shear stress inhibits membrane type 1-matrix metalloproteinase expression in endothelium. *J Biol Chem*. 2002; 277:34808-34814.
35. Harris TA, Yamakuchi M, Kondo M, Oettgen P, Lowenstein CJ. Ets-1 and Ets-2 Regulate the Expression of MicroRNA-126 in Endothelial Cells. *Arterioscler Thromb Vasc Biol*. 2010; 30:1990-1997.
36. Weber M, Baker MB, Moore JP, Searles CD. MiR-21 is induced in endothelial cells by shear stress and modulates apoptosis and eNOS activity. *Biochem Biophys Res Commun*. 2010; 393:643-648.
37. Qin X, Wang X, Wang Y, Tang Z, Cui Q, Xi J, Li YS, Chien S, Wang N.

- MicroRNA-19a mediates the suppressive effect of laminar flow on cyclin D1 expression in human umbilical vein endothelial cells. *Proc Natl Acad Sci U S A*. 2010; 107:3240-3244.
- 38.** Wang KC, Garmire LX, Young A, Nguyen P, Trinh A, Subramaniam S, Wang N, Shyy JY, Li YS, Chien S. Role of microRNA-23b in flow-regulation of Rb phosphorylation and endothelial cell growth. *Proc Natl Acad Sci U S A*. 2010; 107:3234-3239.
- 39.** Mellick AS, Plummer PN, Nolan DJ, Gao D, Bambino K, Hahn M, Catena R, Turner V, McDonnell K, Benezra R, Brink R, Swarbrick A, Mittal V. Using the transcription factor inhibitor of DNA binding 1 to selectively target endothelial progenitor cells offers novel strategies to inhibit tumor angiogenesis and growth. *Cancer Res*. 2010; 70:7273-7282.
- 40.** Strillacci A, Griffoni C, Sansone P, Paterini P, Piazzzi G, Lazzarini G, Spisni E, Pantaleo MA, Biasco G, Tomasi V. MiR-101 downregulation is involved in cyclooxygenase-2 overexpression in human colon cancer cells. *Exp Cell Res*. 2009; 315:1439-1447.
- 41.** Kazenwadel J, Michael MZ, Harvey NL. Prox1 expression is negatively regulated by miR-181 in endothelial cells. *Blood*. 2010; 116:2395-2401.
- 42.** Yin KJ, Deng Z, Hamblin M, Xiang Y, Huang H, Zhang J, Jiang X, Wang Y, Chen YE. Peroxisome proliferator-activated receptor delta regulation of miR-15a in ischemia-induced cerebral vascular endothelial injury. *J Neurosci*. 2010; 30:6398-6408.

43. Wagner-Ecker M, Schwager C, Wirkner U, Abdollahi A, Huber PE. MicroRNA expression after ionizing radiation in human endothelial cells. *Radiat Oncol.* 2010; 5:25.
44. SenBanerjee S, Lin Z, Atkins GB, Greif DM, Rao RM, Kumar A, Feinberg MW, Chen Z, Simon DI, Luscinskas FW, Michel TM, Gimbrone MA, Jr., Garcia-Cardena G, Jain MK. KLF2 Is a novel transcriptional regulator of endothelial proinflammatory activation. *J Exp Med.* 2004; 199:1305-1315.