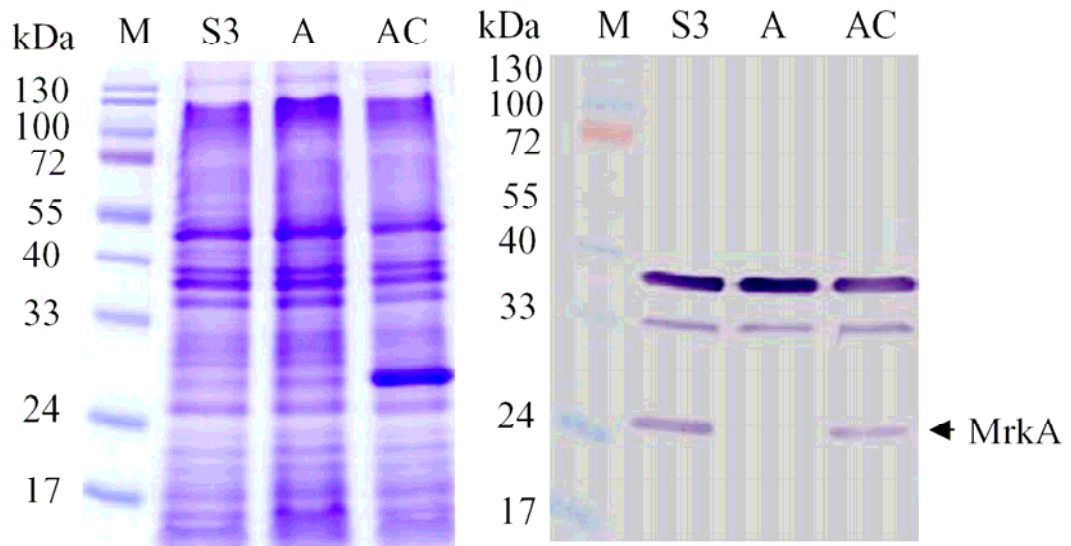
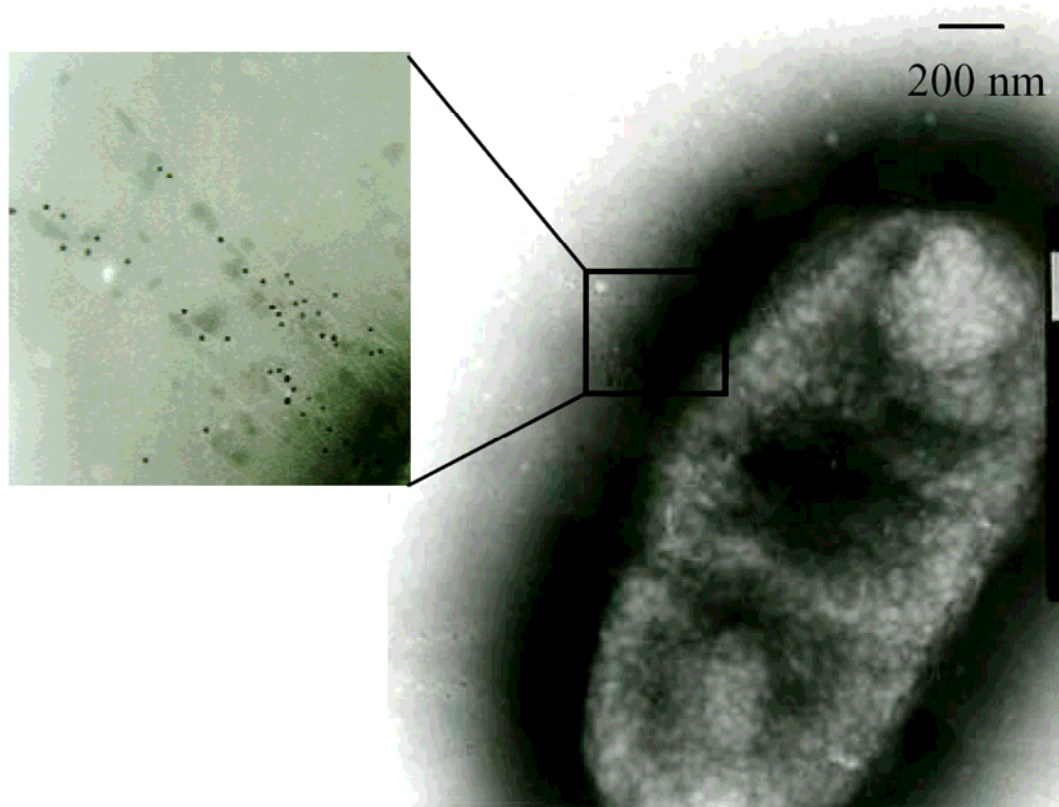


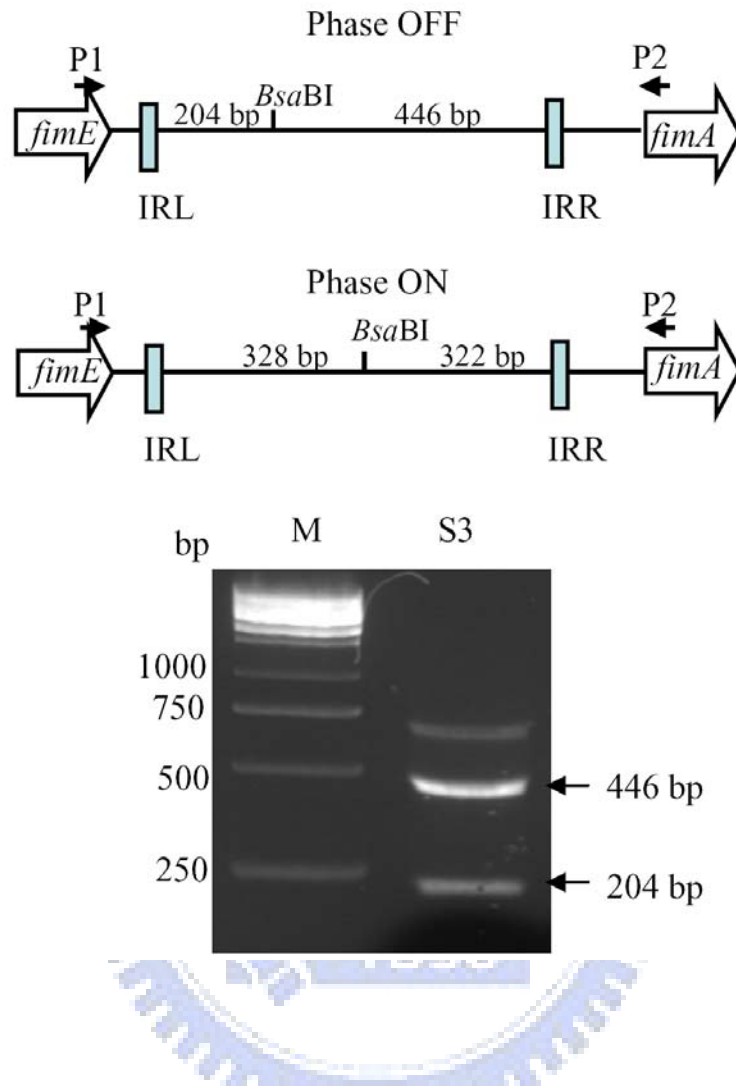
(A)



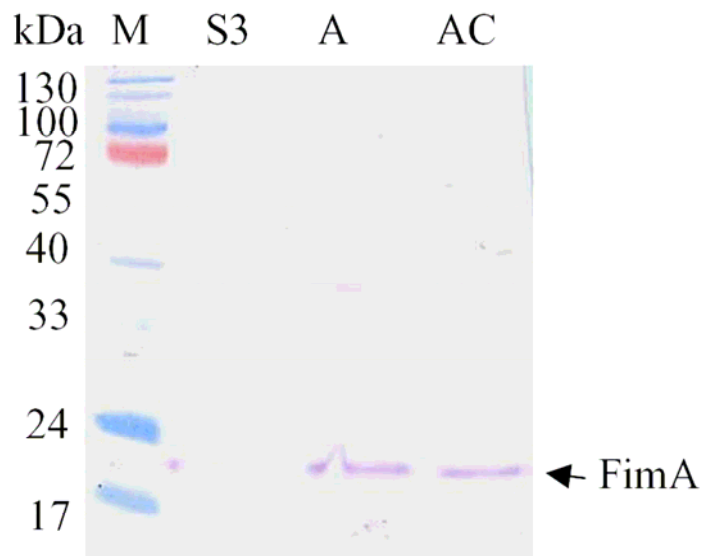
(B)



(C)



(D)



(E)

<i>K. pneumoniae</i> CG43	Yeast agglutination count without 2% mannose	Yeast agglutination count with 2% mannose
S3	8	-
A	16	-
AC	2	-

Fig. 10. (A) Western blotting analysis of the expression of type 3 fimbriae. Total proteins isolated from the bacteria were resolved on SDS-12.5% polyacrylamide gel by electrophoresis (left), and the gel transferred onto PVDF and the expression of type 3 fimbriae recognized with anti-MrkA antibody (right). M: marker. S3: *K. pneumoniae* CG43S3, A: *K. pneumoniae* CG43S3mrkA⁻, AC: *K. pneumoniae* CG43S3mrkA⁻[pYJA]. (B) TEM observation of type 3 fimbriae labeled with 1:50 dilution of the polyclonal anti-MrkA antiserum and gold particle (10 nm)-conjugated anti-mouse immunoglobulin. (C) Diagrammatic representation of the promoter analysis (Up) and the DNA electrophoresis shows the patterns corresponding to phase ON and OFF for the expression of type 1 fimbriae (bottom). S3: *K. pneumoniae* CG43S3. (D) The expression of type 1 fimbriae was detected with anti-FimA antibody. (E) Yeast agglutination assay. The yeast agglutination count expressed as the highest dilution of the bacteria causing a visible yeast agglutination. S3: *K. pneumoniae* CG43S3, A: *K. pneumoniae* CG43S3mrkA⁻, AC: *K. pneumoniae*.