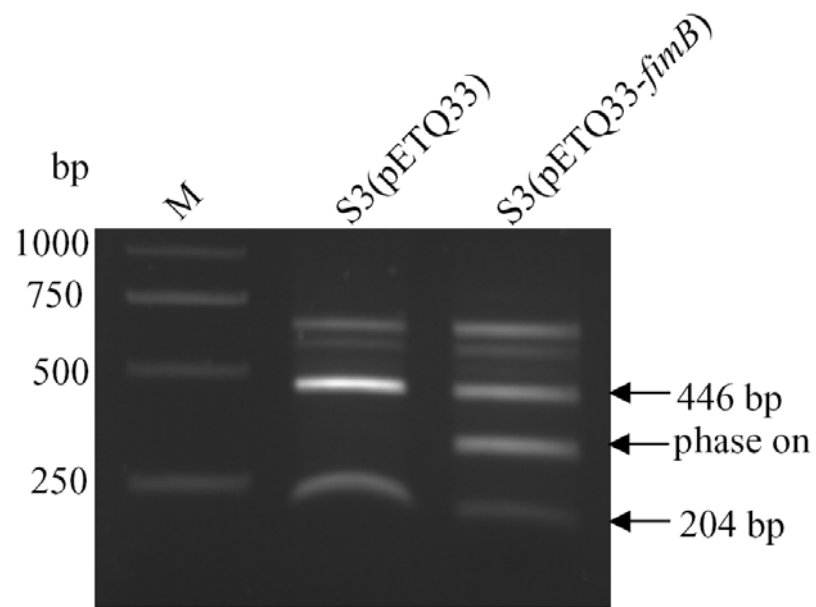


(A)



(B)



<i>K. pneumoniae</i> CG43	Yeast agglutination count without 2% mannose	Yeast agglutination count with 2% mannose
S3(pETQ33)	4	-
S3(pETQ33- <i>fimB</i>)	64	1

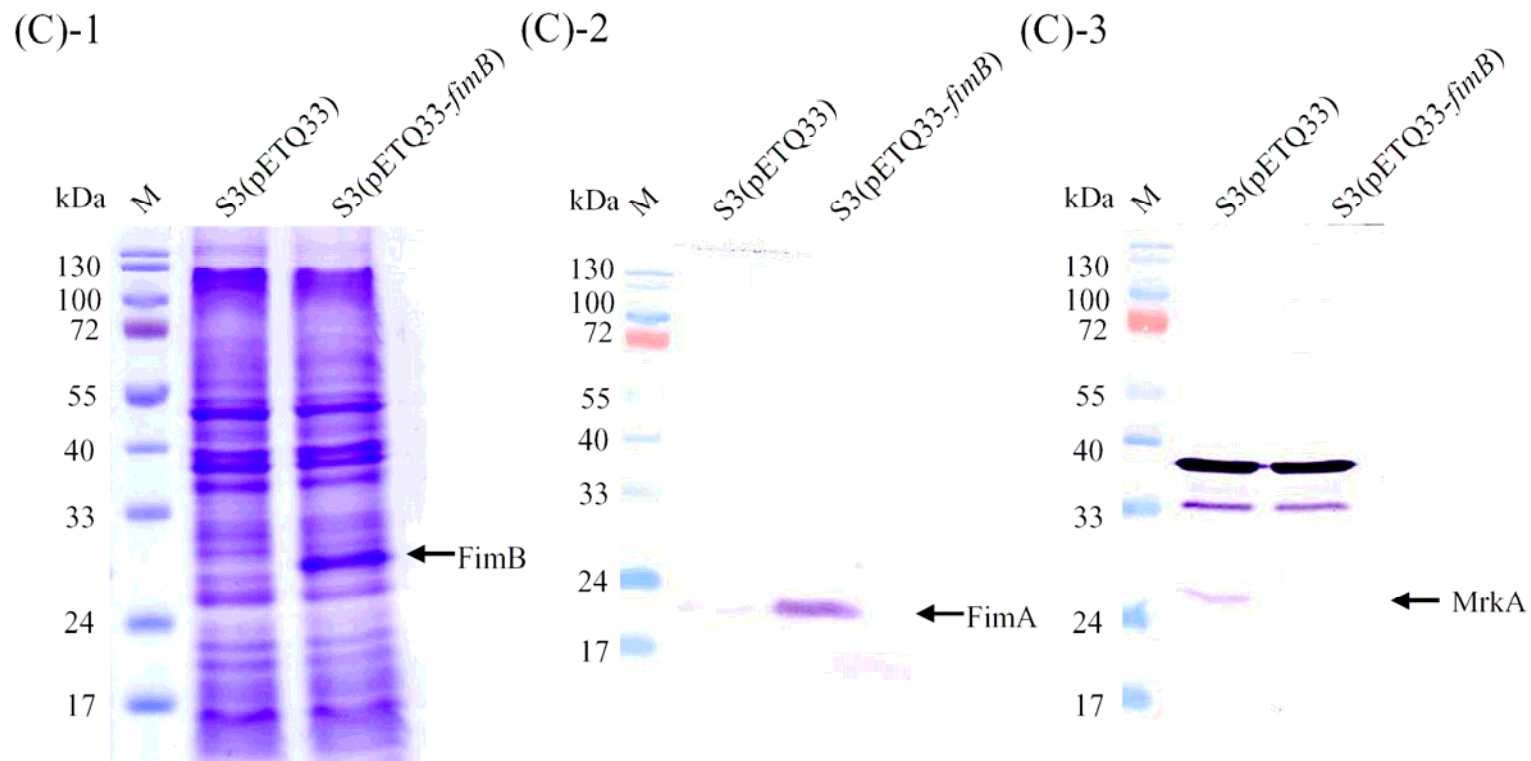


Fig. 11. (A) Analysis of P_{fimA} switch. The DNA bands of P_{fimA} corresponding to OFF and ON phase for the expression of type 1 fimbriae are marked. (B) Yeast agglutination activity of *K. pneumoniae* CG43S3 transformed with plasmid pETQ33 or the *fimB*-expression plasmid pETQ33-*fimB*. (C) Total proteins isolated from each of the bacteria were resolved on SDS-12.5% polyacrylamide gel by electrophoresis (C)-1, and the gel transferred into PVDF and labeled with anti-FimA antibody (C)-2 and anti-MrkA antibody (C)-3.