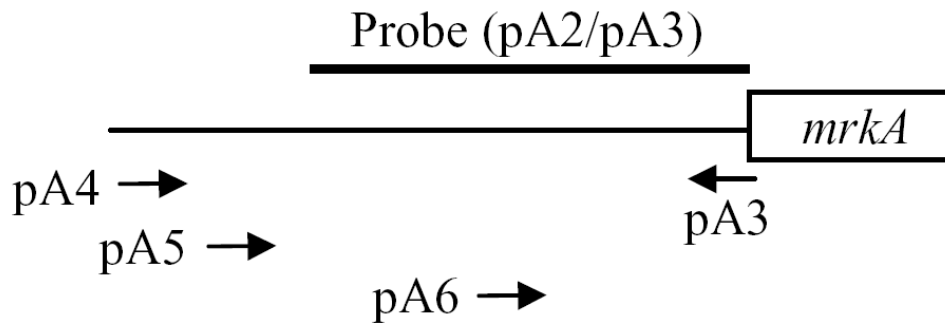


(A)



(B)

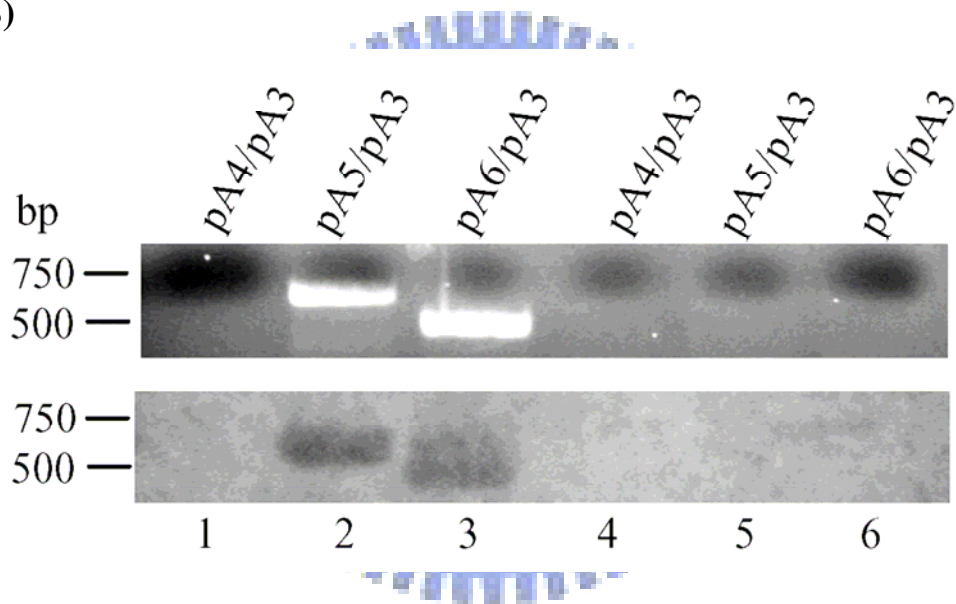


Fig. 13. (A) Locations of the primers used in mapping of the *mrkA* transcription start site. (B) Mapping of the *mrkA* transcription start site by RT-PCR (upper panel) and Southern blotting hybridization (lower panel). Lanes 1 to 3: PCR amplification of the cDNA synthesized from 1- μ g of total RNA; 4 to 6: PCR amplification of the total RNA. The probe used is synthesis with pA2 and pA3.