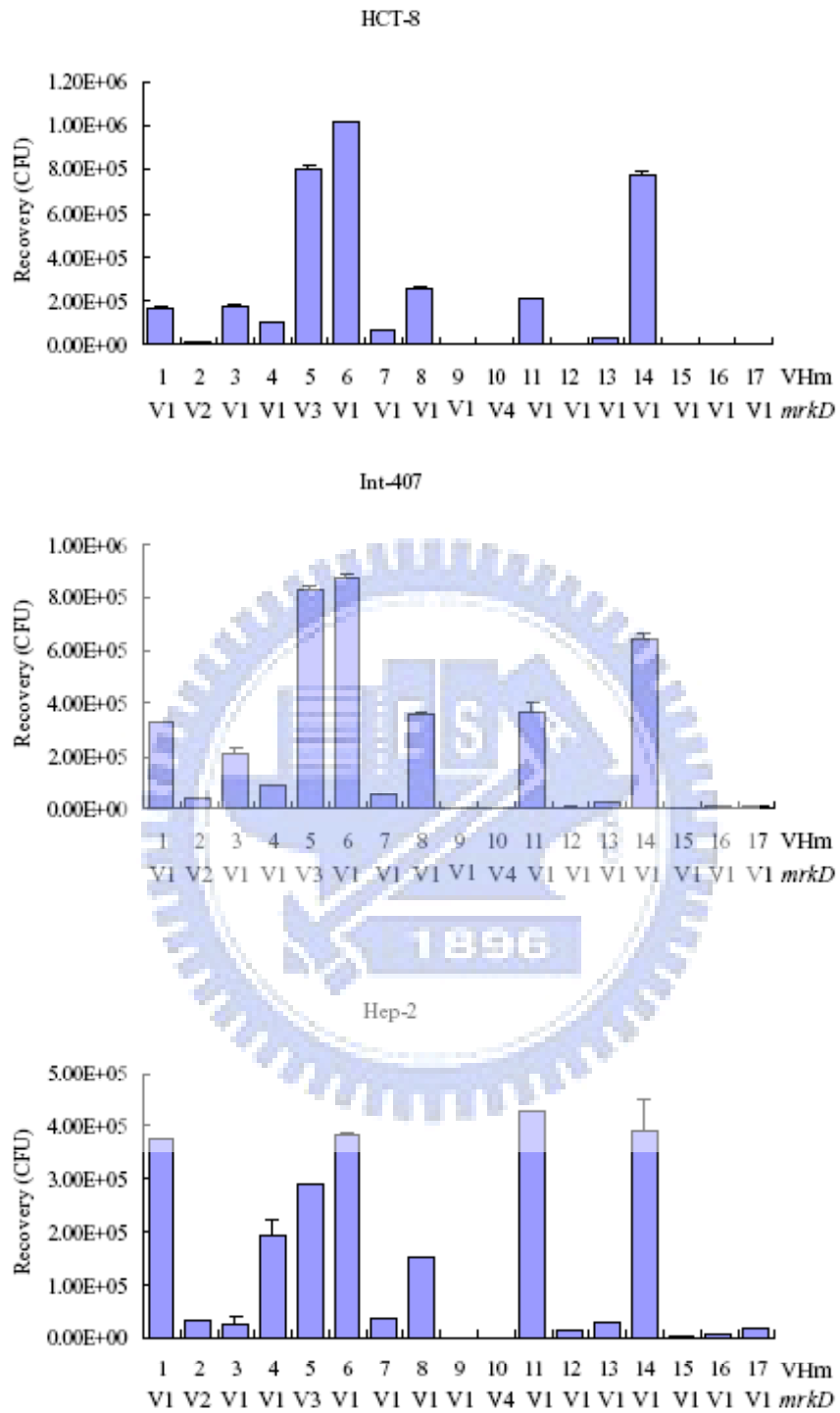


(A)



(B)

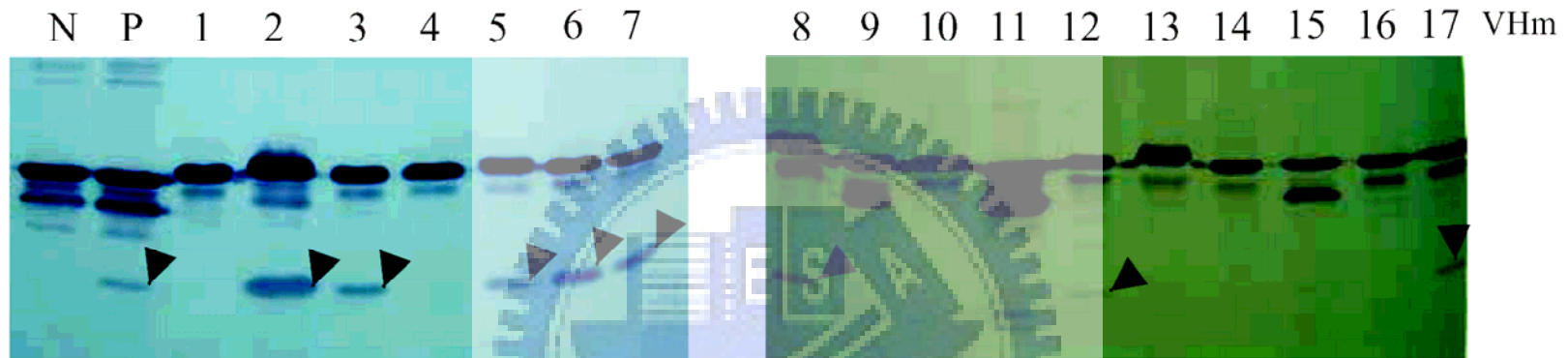


Fig. 2. (A) Cellular adherence activity of the meningitis isolates. Approximately 10^7 bacteria were added to each of the confluent cells of Hep-2, HCT-8, and Int-407. The cell-adhesive bacteria were measured by recovery of the colony formation on LB agar. The results are recorded as recovery of the bacteria and data shown represent mean values and standard deviations. (B) Western blotting analysis of the type 3 fimbrial expression in the 17 *K. pneumoniae* meningitis isolates. Approximately 15- μ g of total proteins isolated from each of the clinical isolates were resolved on SDS-12.5% polyacrylamide gel by electrophoresis, the gel transferred onto PVDF paper, and the expression of type 3 fimbriae detected by MrkA antiserum. N: JM109[pGEM-T easy] is the negative control. P: JM109[pmrkABC] is the positive control. The arrowheads mark the expression of the major fimbrial subunit MrkA.