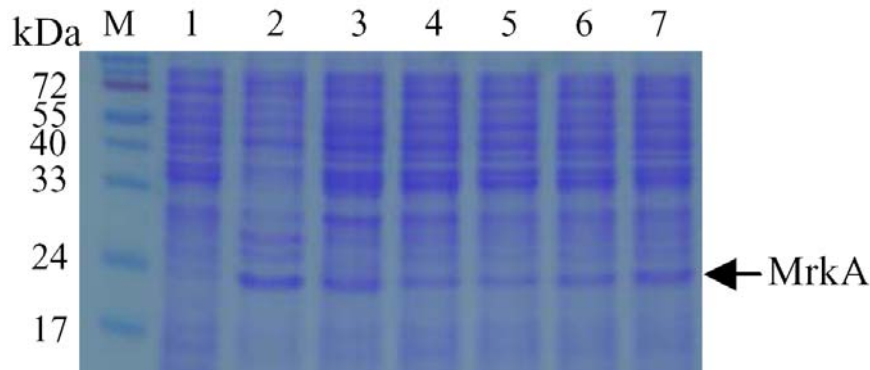
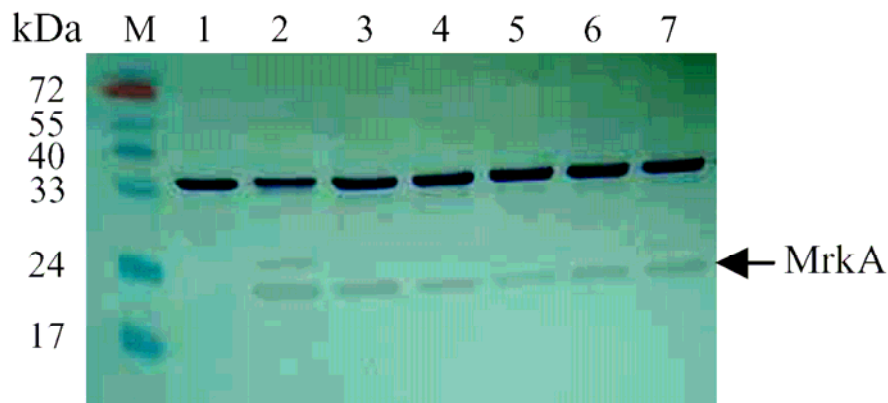


(A)



(B)



**Fig. 3.** Western blotting analysis of MrkA expression in the recombinant *E. coli*. Approximately 13- $\mu$ g of total proteins isolated from each of the clinical isolates were resolved on SDS-12.5% polyacrylamide gel by electrophoresis (A), and the gel transferred into PVDF and the expression of type 3 fimbriae recognized with Anti-MrkA (B). M, marker: Lane 1, JM109 [pGMT]; lane 2, JM109 [pmrkABC]; lane 3, JM109 [pmrkABCF]; lane 4, JM109 [pmrkABCD<sub>V1</sub>F]; lane 5, JM109 [pmrkABCD<sub>V2</sub>F]; lane 6, JM109 [pmrkABCD<sub>V3</sub>F]; lane 7, JM109 [pmrkABCD<sub>V4</sub>F]. M stands for the molecular weight marker.