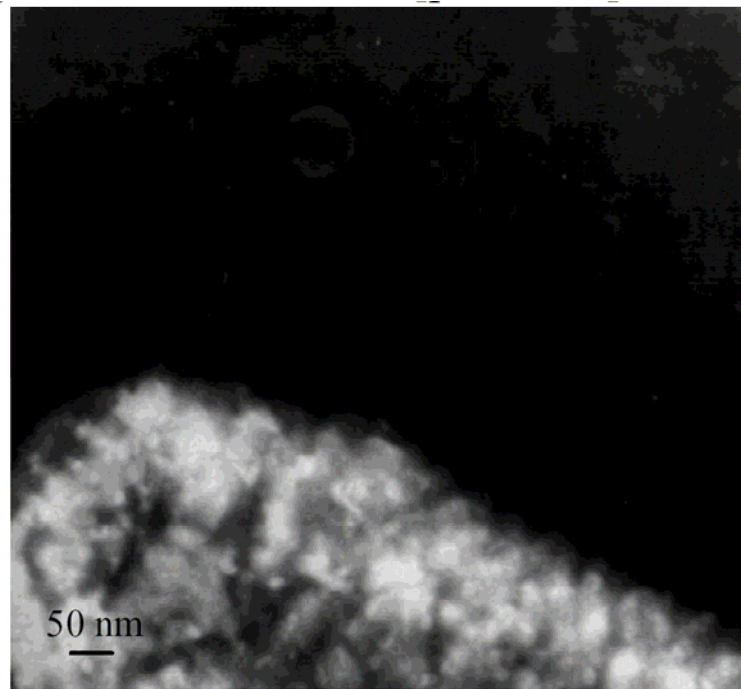


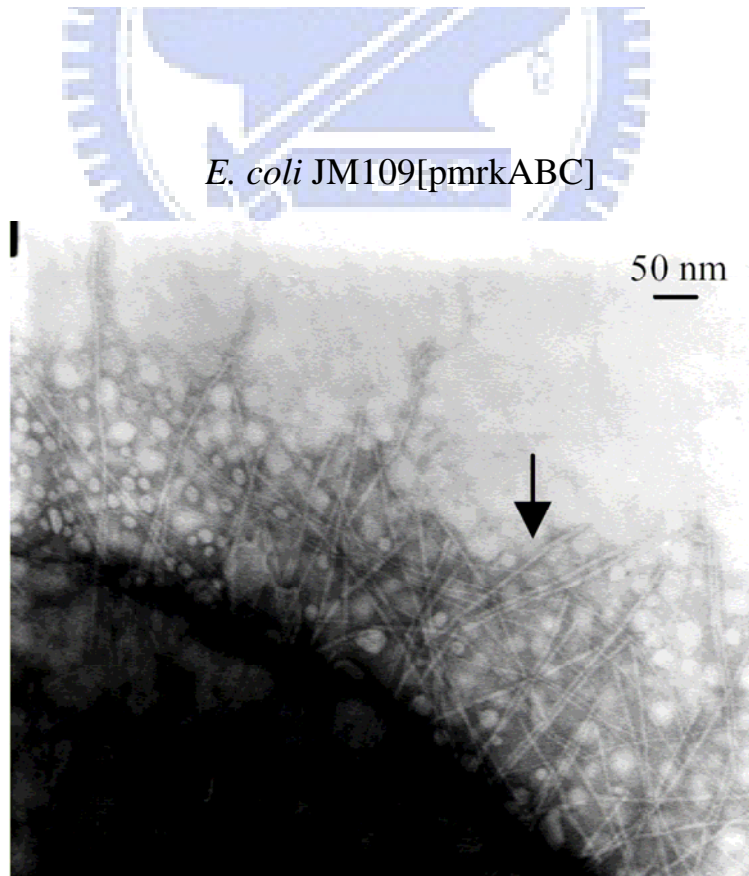
(A)

E. coli JM109[pGEM-T]



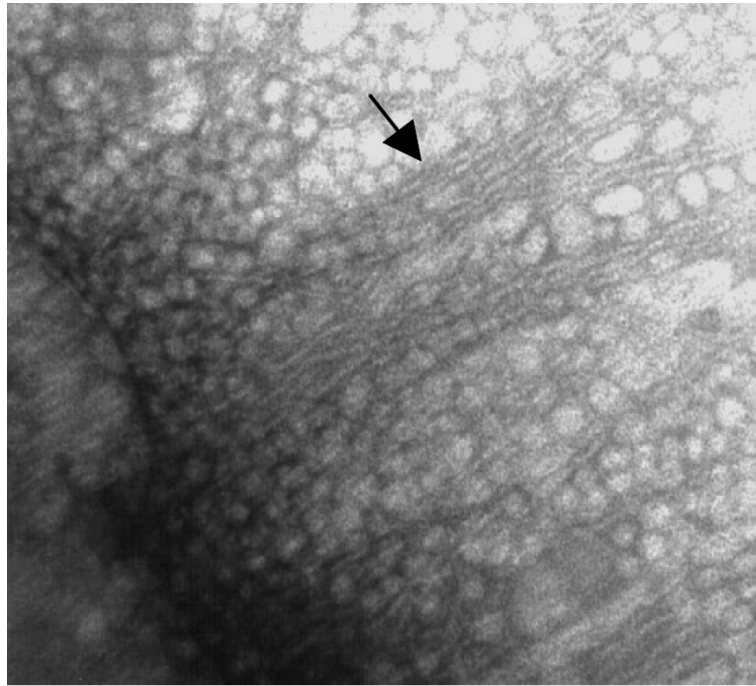
(B)

E. coli JM109[pmrkABC]



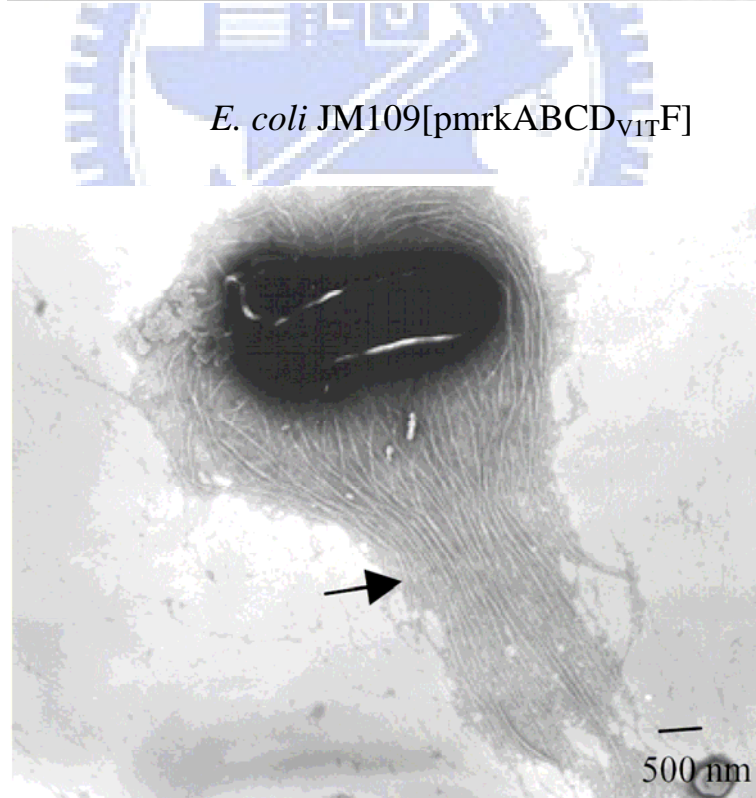
(C)

E. coli JM109[pmrkABCF]



(D)

E. coli JM109[pmrkABCD_{VIT}F]



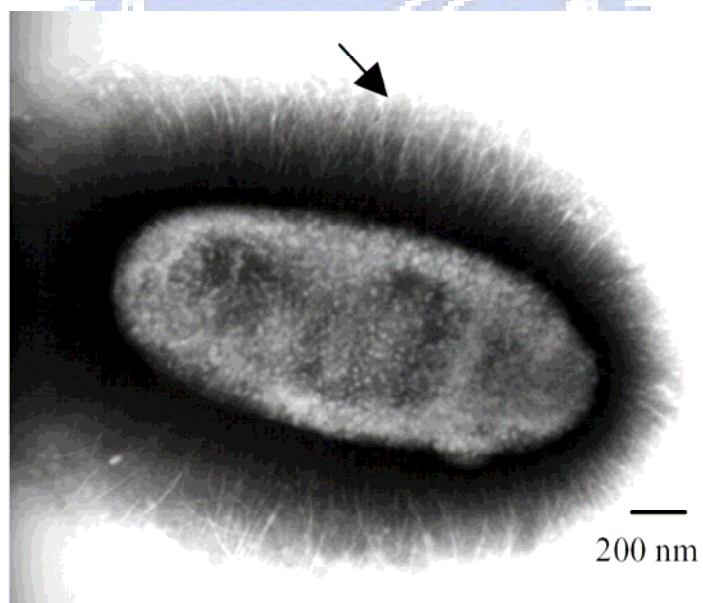
(E)

E. coli JM109[pmrkABCD_{v2}F]



(F)

E. coli JM109[pmrkABCD_{v4}F]



(G)

E. coli JM109[pmrkABCD_{V3}F]

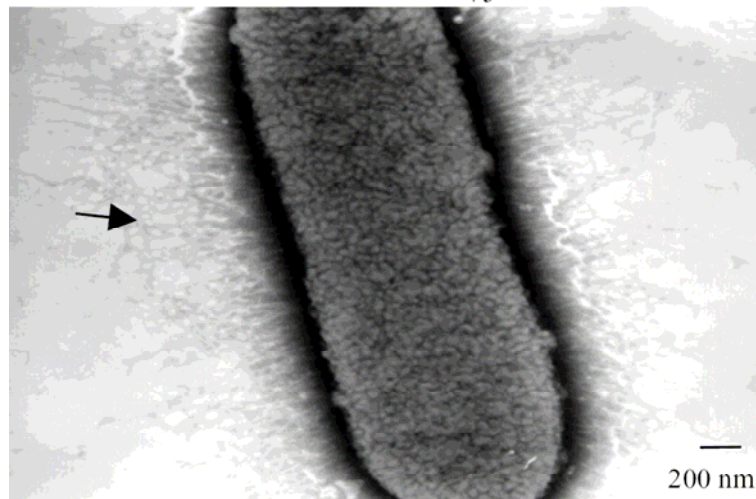


Fig. 4. Transmission electron micrographs of the type 3 fimbriae displaying on the recombinant *E. coli*. One drop of bacterial suspension was placed on a carbon-coated copper grid, and negatively stained with 2% phosphotungstic acid. The fimbriae is indicated by an arrow.