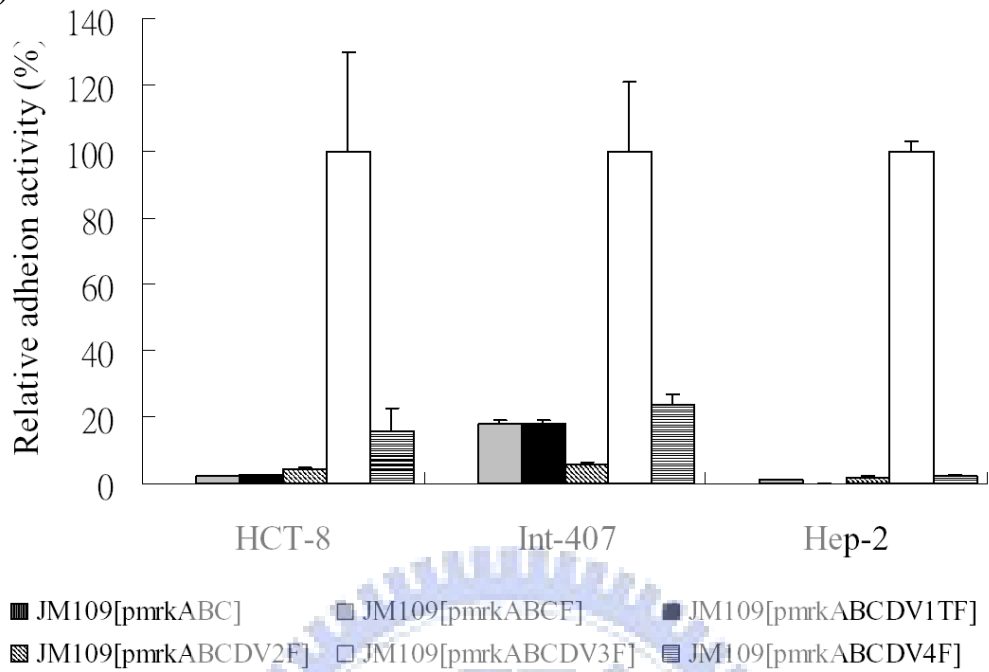
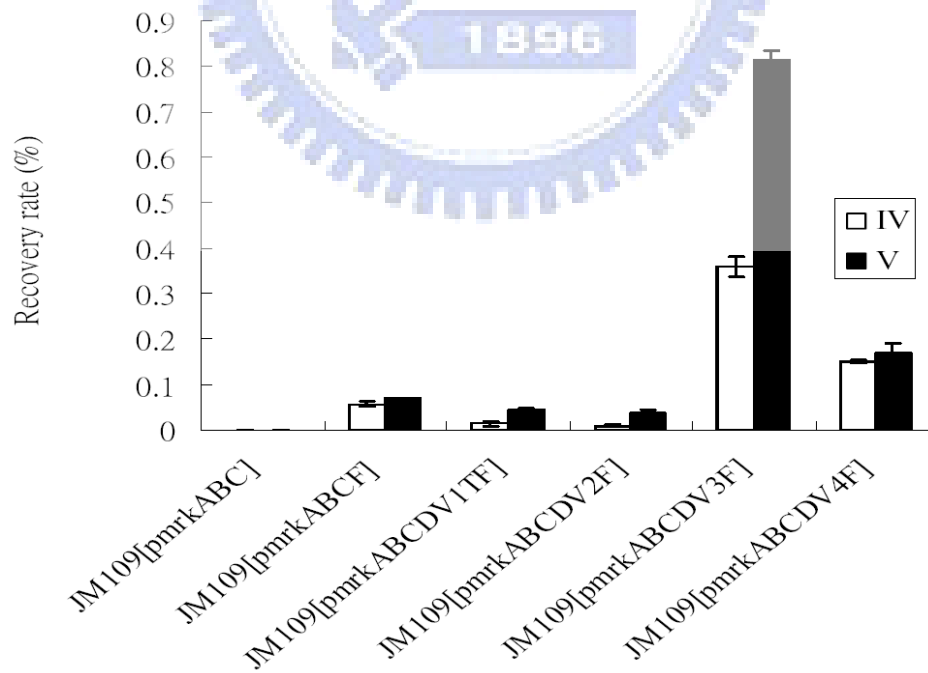


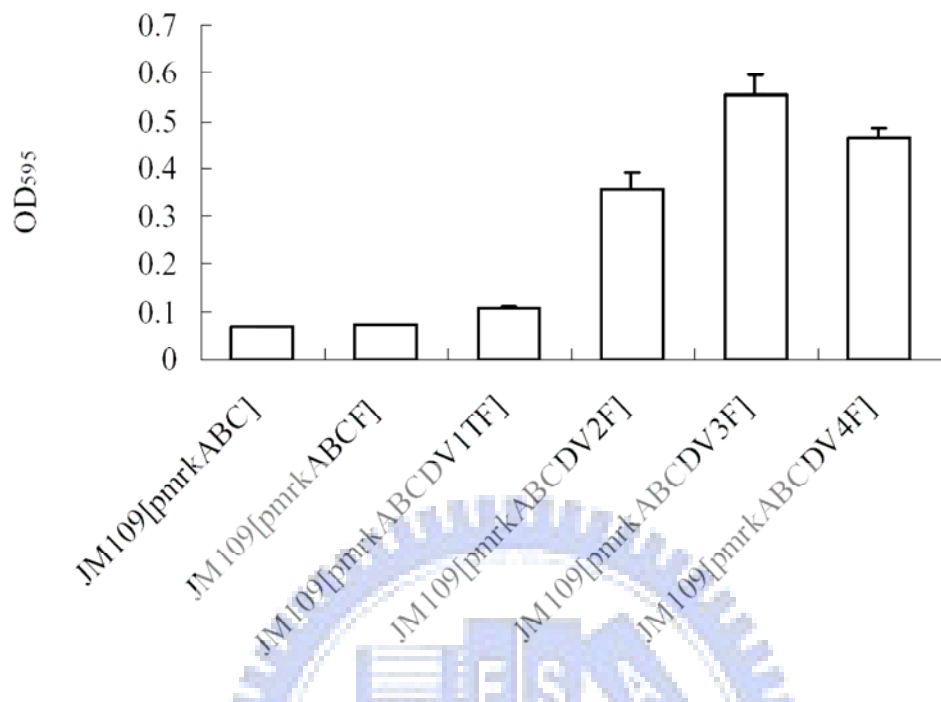
(A)



(B)



(C)



(D)

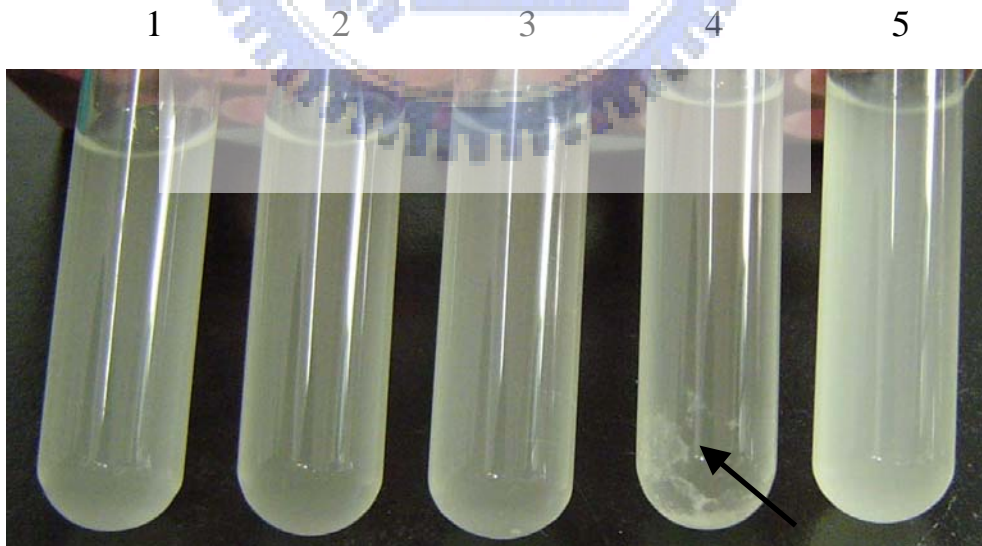


Fig. 7. The activity assessments of the recombinant type 3 fimbriae. (A) Cell adhesion assay. The value is expressed as the percentage of the adherence obtained in comparing with that of *E. coli* JM109 [pmrkABCD_{V3}F], which has the most binding activity. (B) Collagen binding activity. The results are recorded as percentage derived from the original inoculum and the value is expressed as the mean \pm standard error. (C) Biofilm formation of the recombinant *E. coli*. For each column, the value is expressed as the mean \pm standard error. (D) Autoaggregation phenotype of *E. coli* JM109[pmrkABCD_{V3}F]. Cells were grown in GCAA medium for 20 h at 37°C. The autoaggregative phenotype is indicated by arrow. 1, JM109 [pmrkABC]; 2, JM109 [pmrkABCD_{V1}F]; 3, JM109 [pmrkABCD_{V2}F]; 4, JM109 [pmrkABCD_{V3}F]; 5. JM109 [pmrkABCD_{V4}F].

