

RE_FINE

王昭智 CHAO-CHIH WANG



煉

RE_FINE

王昭智 CHAO-CHIH WANG




煉

RE_FINE

王昭智 CHAO-CHIH WANG



< INDEX

	PREFACE	00
	ABSTRACT	01
	RE_ VERTICAL DISTRIBUTION	02
7-11	SCATTERING OF 7-11	
	RE_ EMBANKMENT	18
	WANDER BETWEEN THE BANK AND THE PARK	
	RE_ COMBINANT COMPLEXITY	36
五行	THE FIVE ELEMENTS	
	RE_ BRANDING STONE BELIEF	50
六尺石下	6M UNDER THE STONE	
	RE_ WEAVING	76
編織曲面	WEAVING SURFACE	
	RE_ CORDS OF COMPETITION	88
宅世代 草莓族	H-GEN STRONG BERRY	



< PREFACE

" If that concept is the same two times, is the building the same both times? "

Cited from Architecture and Disjunction, Bernard Tschumi, April 2007



< ABSTRACT

Re_Fine is a compound word which means to improve, polish and carve. While the word is separated to RE_Fine, it has a different meaning.

RE is a word which has a meaning of furthermore to improve something better. Architectural design is a proceeding process to finding an appropriate answer.

Although with the same issue and concept, there are still some differences which exist about how to represent the context and contents of architecture in other viewpoints. To re-start and to find a new answer achieving a new project is an important issue in my thesis statement.

Therefore, the main topic of my thesis is called RE, which means the same methodology will be used towards the persistent proceeding process of architectural creation.

RE is a starting quotation cited in every chapter, representing that research, definition, methodology, experimentation, and observation of the architectural design innovation.

RE_Vertical distribution is a chapter which discourses how to organize a vertical distribution system from the research of the Seven-Eleven service system that strikes down the limitation of traditional floor system.

RE_Embankment is a chapter which is liberating the urban wound by re_defining the embankment of the Taipei city.

RE_Combinant Complexity is a chapter which composites the programmatic organization by using the organization of Chinese thesis called The Five Elements.

RE_Branding Stone Belief is a chapter thriving on the site of Stone religion through rejuvenation of the life cycle, of the forgotten or readily available material, skill and resources, which are relevant to the original environment.

RE>Weaving Surface is a chapter discussing the methodology of the manufacture of surface through the adjustment in parameter of mathematical formula.

RE_Cords of Competition is a chapter which records what I participated in competitions of design in different categories between these two years in graduate school.

Overall, this thesis of RE_Fine, the goal which I aspire, is discussing architectural researches in my graduating works, which is in accordance with the meaning of RE.



< READING PREFACE

“.....I imagined it erased by rice field or beneath the water ;
I imagined it infinite, no longer composed of octagonal kiosks and returning paths,
but of rivers and provinces and kingdoms... I thought of a labyrinth of labyrinths,
of one sinuous spreading labyrinth that would encompass the past and future
And in some way involve the stars.....”

Cited from The Garden of Forking Paths, Jorge Luis Borges, 1941

煉

RE_01 SCATTERING OF 7-11

王昭智 CHAO-CHIH WANG





< RE_ 01

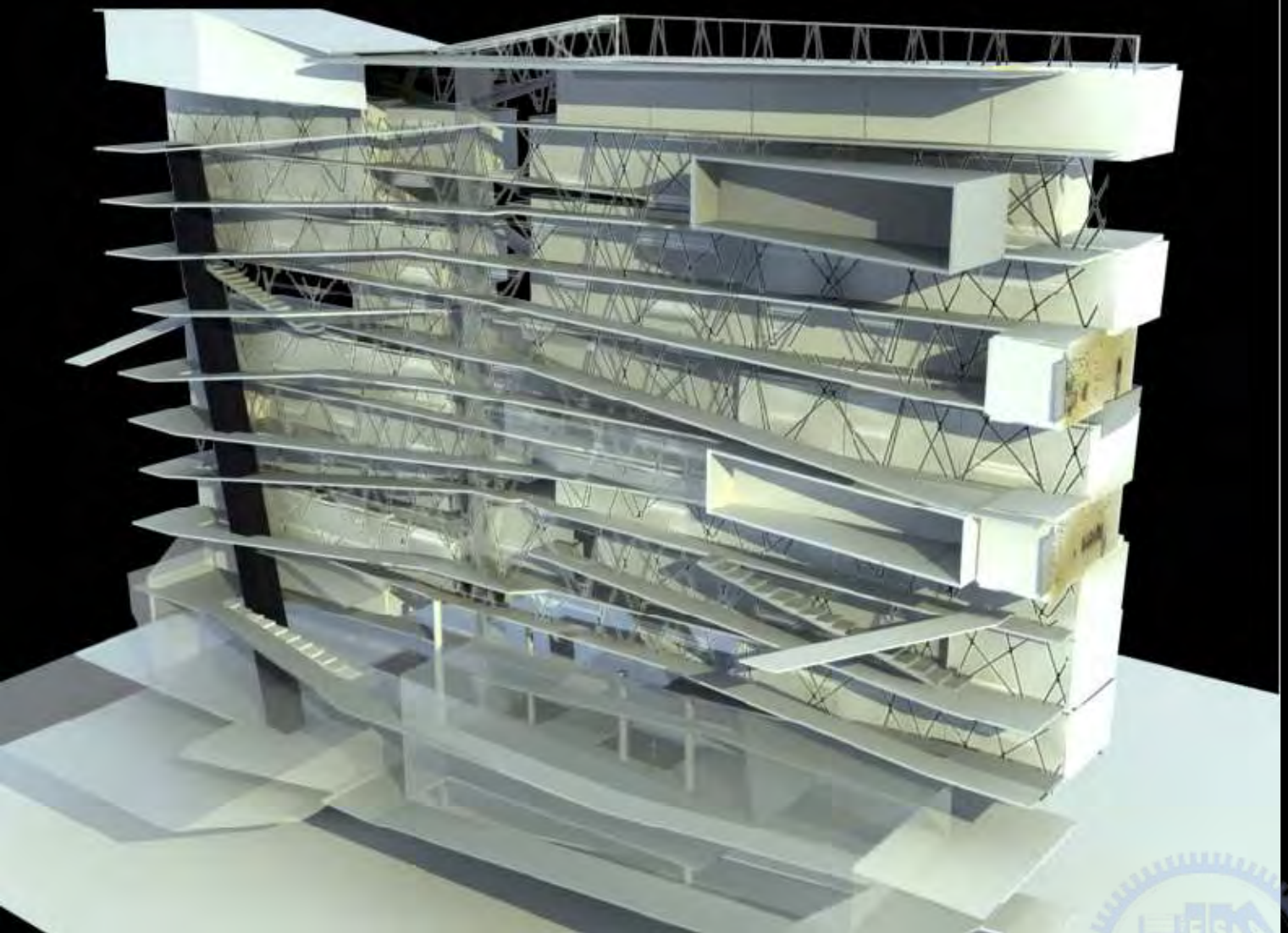


RE_VERTICAL DISTRIBUTION
7-11 SCATTERING OF 7-11

PROJECT < 01

DURATION < 07 2006 - 01 2007

ADVISOR < TERRANCE TAI-LAI KAN



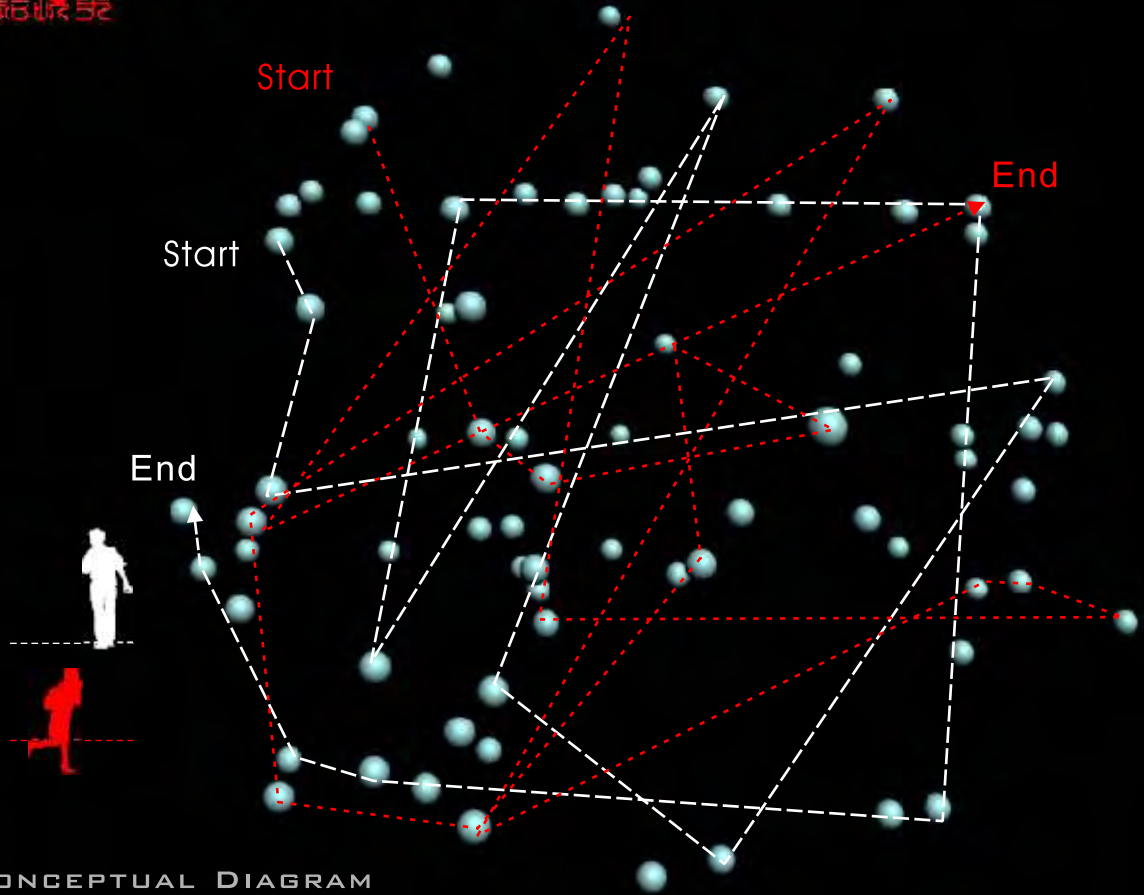
< ARCHITECTURAL MULTI-LINKAGE



丙戌
·
癸亥



< MULTI-LINKAGE PHENOMENON 多元性連結現象

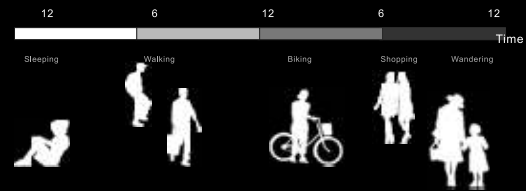


< CONVENIENT SERVICE SYSTEM 週末便利系統

< Phenomenon of daily life of citizens



Density of 7-11 in TOKYO in different phase



Density of 7-11 in Hsin-chu

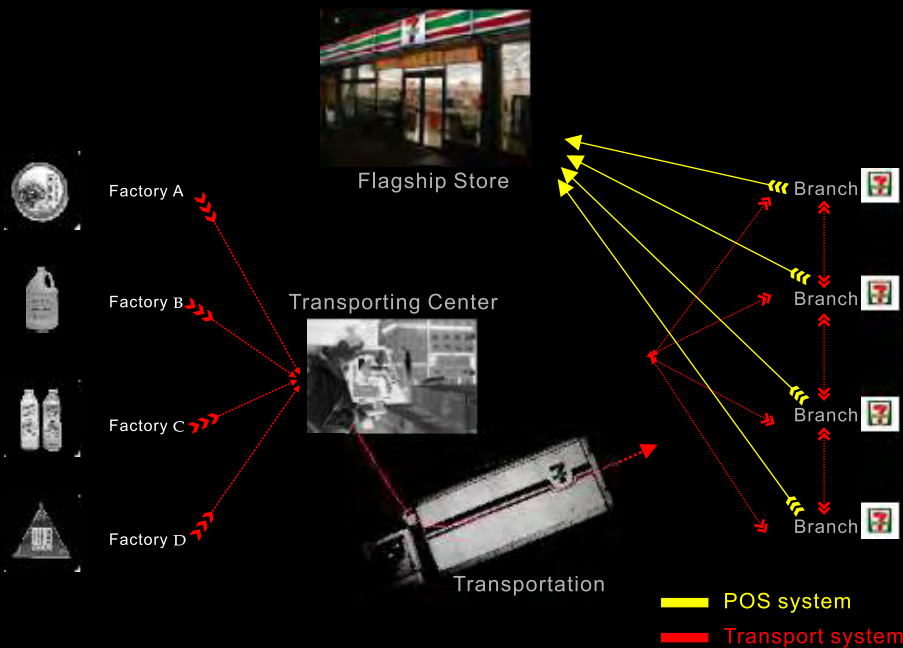
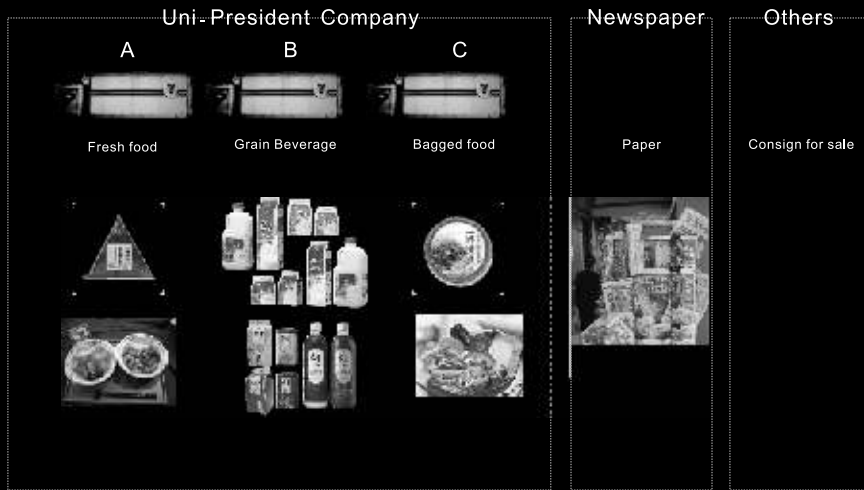
< CARTOGRAM OF DISTRIBUTION



Instead of contending for business, they get more revenue while more 7-11 are opened in an area.
 Therefore, 7-11 will begin to make a profit when the number of branches in a region is more than a constant.
 Because the nearly distance of branches decline the cost of transportation, it increased the frequency and efficiency of transport.
 Now, 7-11 have reached three times of routes per day.

< SYSTEM OF INNER TRANSPORTATION

內配物流系統



< INNER TRANSPORTING SYSTEM OF 7-11





< COMPARED WITH DIFFERENT AREA 區域性差異比較



< DISTRIBUTION OF INNER TRANSPORTING SYSTEM

水平向度分氣
HORIZONTAL DISTRIBUTION

VERTICAL DISTRIBUTION
垂直向度分氣

< THESIS STATEMENT



丙戌·秋

< DEFINITION OF SERVING SYSTEM

解讀系統建置

Distribution condition
<Taipei Hsin-yi Area >



Territory of service



< THEORY OF DISTRIBUTION OF 7-11

After a variety of factories transported products to the transportation center, the center distribute products to every chain system of 7-11. According to 7-11's principle of distribution, there would be a 7-11 per 5 minutes' walk. A five minutes' walk is about 200 meter; if there is no intervention of street system in it, 7-11's service intensity should be circular equalization. It restarts to define 7-11's service intensity and service domain when street system interposed.

Infrastructural system





< RE_DEFINITION OF SERVING SYSTEM

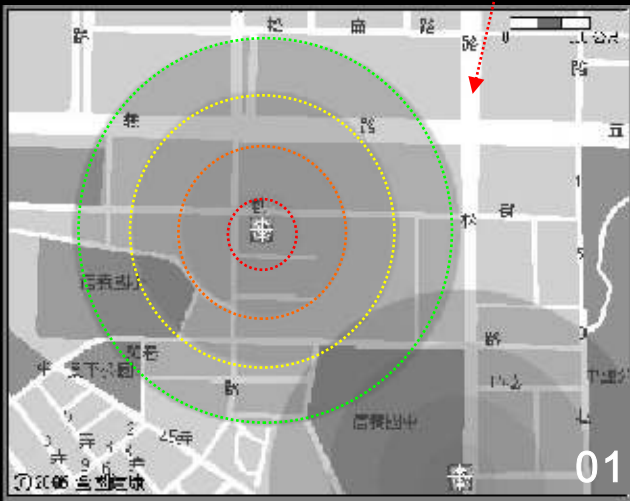
重新定義服務系統



01

Distribution condition
<Taipei Hsin-yi Area >

Zoom in



01

< Four levels in 200 meter



Level 1



Level 2

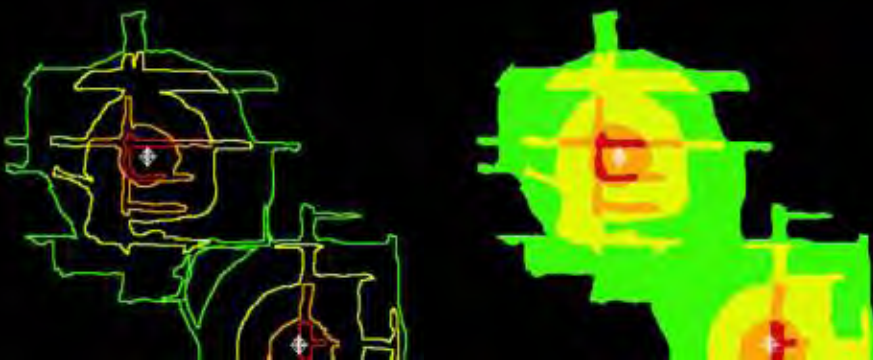


Level 3



Level 4

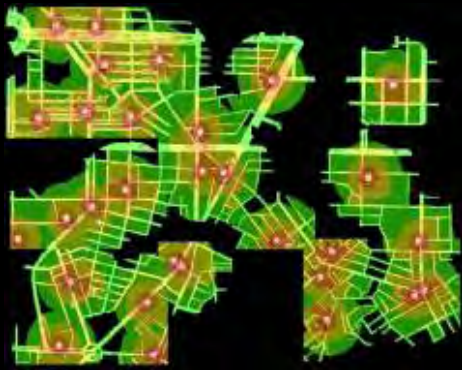
< RE_DEFINE THE TERRITORY OF SERVICE



Territory of serving system

丙戌·秋

< RE_DEFINE THE TERRITORY OF SERVICE



Area of serving



Efficient Street



Boundary of Efficient Street

< MAPPING OF DISTRIBUTION SYSTEM

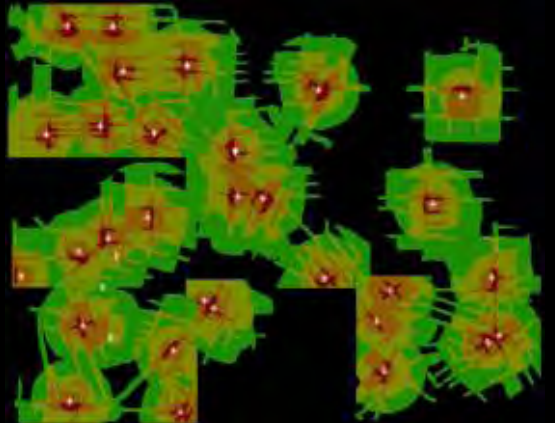
服務系統轉化



Distribution condition
<Taipei Hsin-yi Area >



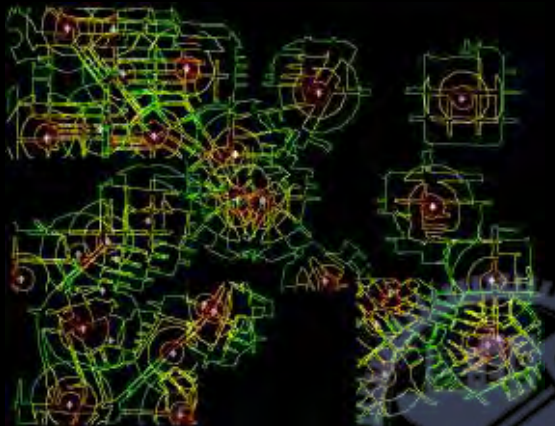
Re_Define territory of serving system



New territory of serving system



< Prototype of serving system



Boundary of territory of serving system





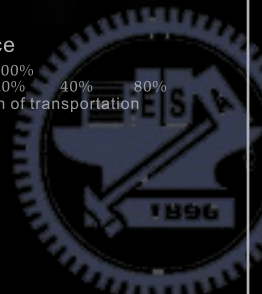
< STRENGTH OF FOUR LEVEL

< MAPPING OF SERVING SYSTEM
 內助配網線系統



< DIAGRAM OF SERVING SYSTEM OF 7-11

Strength of service
 — 60% 100%
 — 0% 20% 40% 80%
 - - - Circulation of transportation





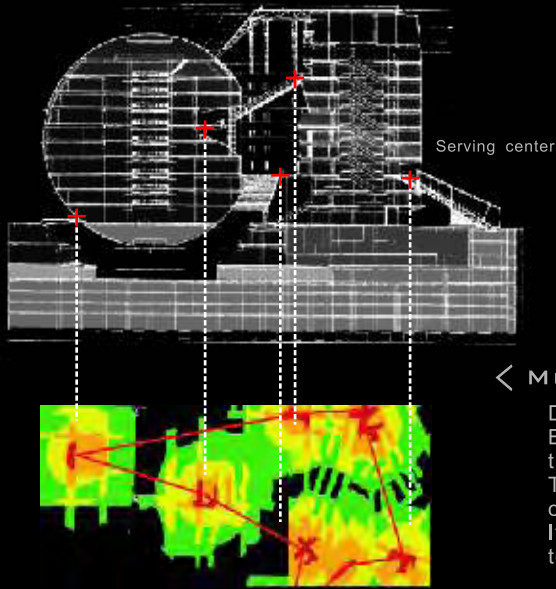
Store



Counter



Shopping center

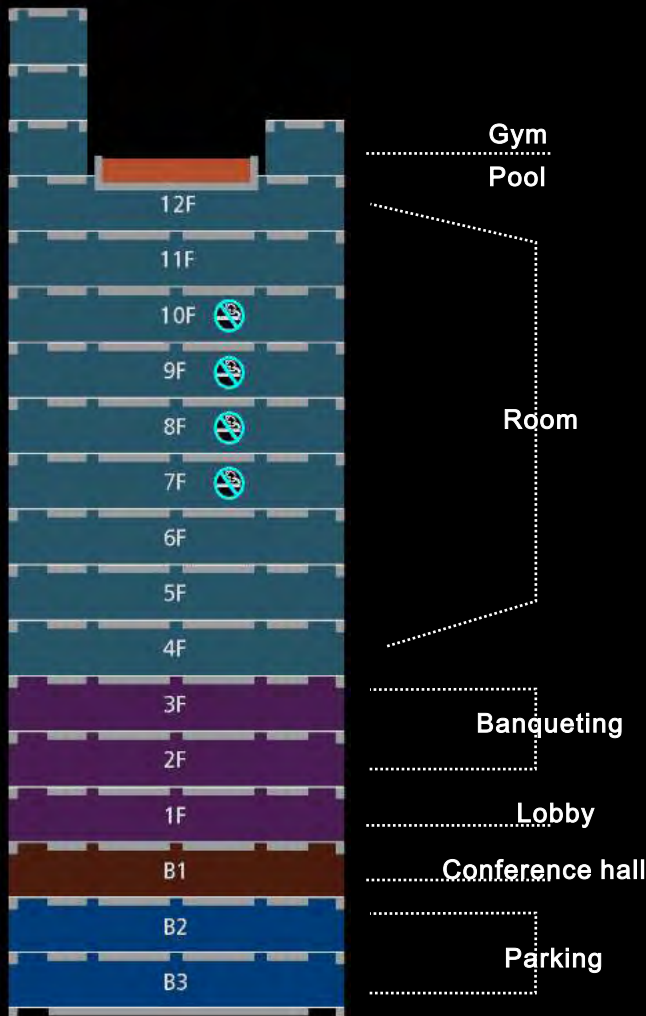


< MULTI_SERVING SYSTEM

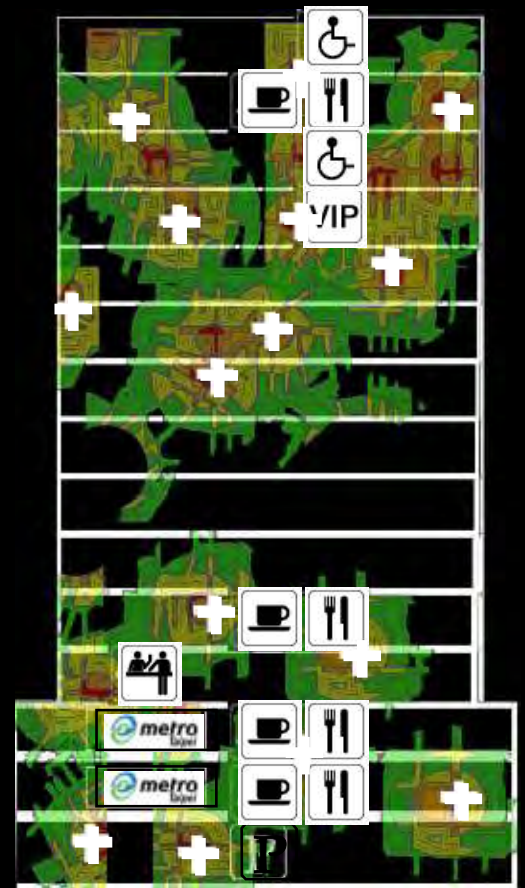
Department store is a multi-serving center building. But in the traditional programmatic distribution, the serving system is also distributed by floor layer. There is a chance in my conceptual diagram based on the research for the distribution of 7-11. It provides a different serving system of distribution toward the new serviced building.

< COMPOSITE PROGRAM OF SERVICE HOTEL

窗閣內閣的組合



Traditional composition



Conceptual composition

< MULTI_SERVING SYSTEM OF SERVICE HOTEL

Service Hotel is a single serving center building. In the traditional programmatic distribution, serving system in Hotel limited by the floorslab. Serving center not only single but also distributed by vertical floor line. In my conceptual diagram which broke the original way of the distribution could have more chance to combine with another serving system.



< RE_COMBINE THE PROGRAM

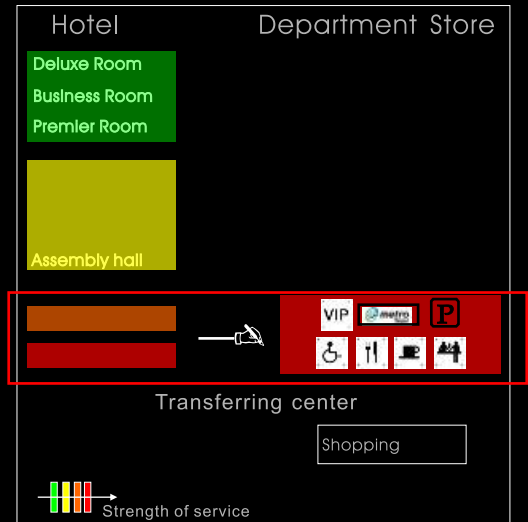
重新組合室內

Service Hotel

Sharing programme +



Department Store



< RE_COMPOSE PROGRAM OF SERVICE HOTEL WITH DEPARTMENT STORE

To achieve the new serving system of Service Hotel which is a multi-serving center system, the distribution of serving program composition will be derived by the original department store.

< SITE ANALYSIS

基地分析



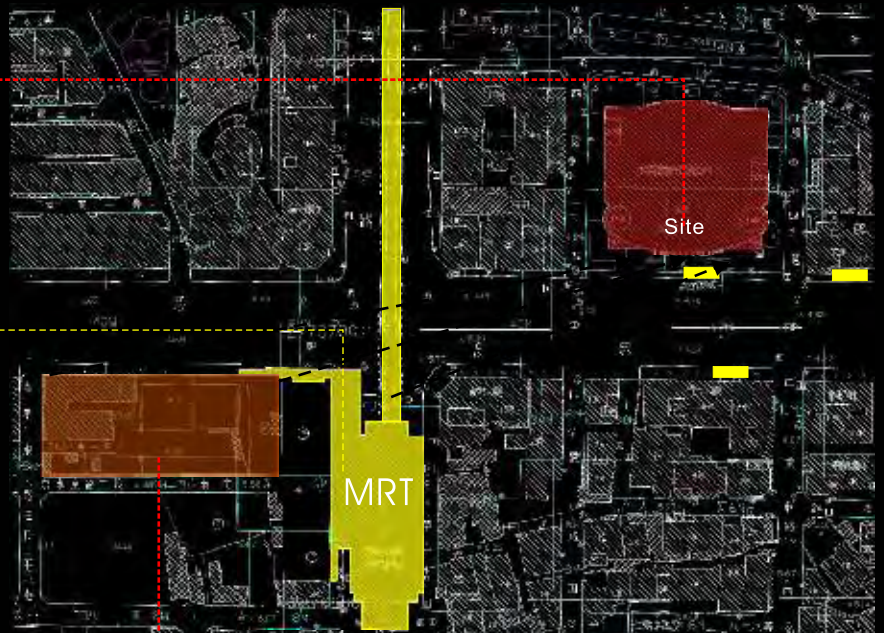
Sogo department store



MRT Station



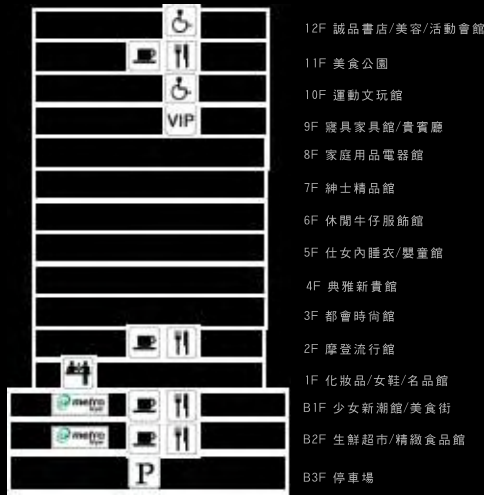
Sogoll department store



Taiwan's SOGO Pacific Department Store, which is located on Taipei Zhong-Xiao Road, is the intersection of MRT Ban-Nan and MU-Ja. Neighboring on Ding-Mei market area and sogoll, it is also the well-traveled hub of basement and ground.



丙戌
·
癸



◀ CURRENT CLASSIFICATION OF FLOOR CATEGORY

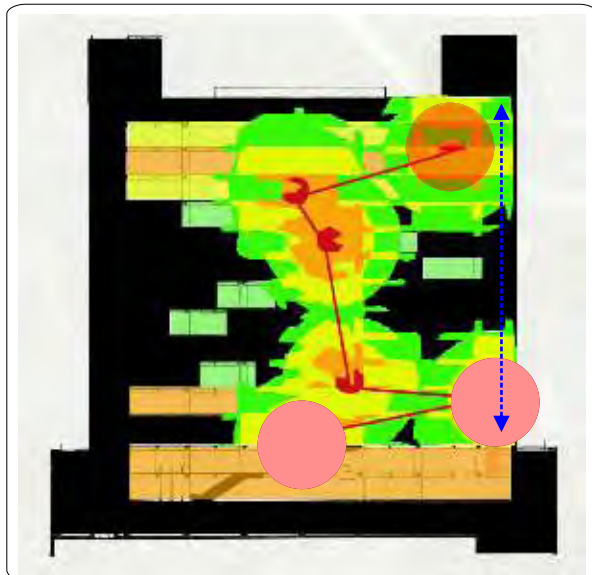
This is a current situation of the programmatic distribution of Sogo department store. The classification of floor category refers that the same categorized program will be distributed by the same floor. According to the diagram of floor category, it is available to decide where sharing area should be.

◀ ANALYSIS OF DISTRIBUTION OF PROGRAM

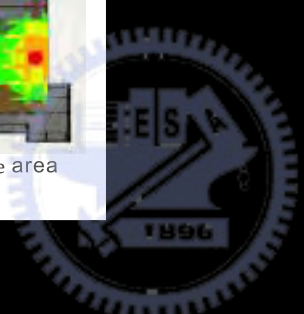
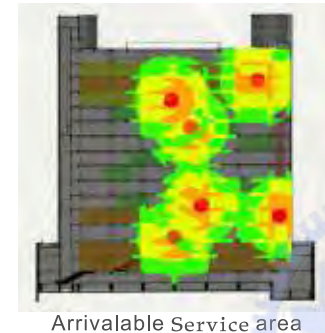
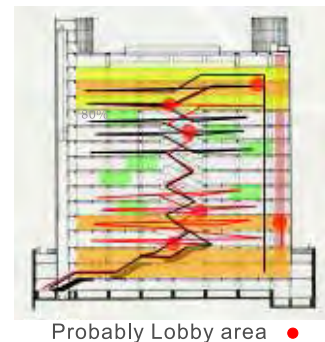
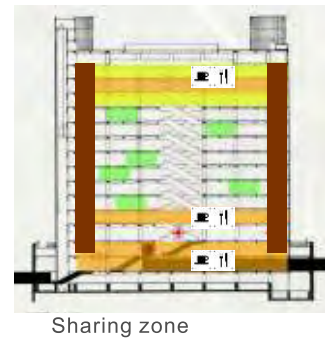
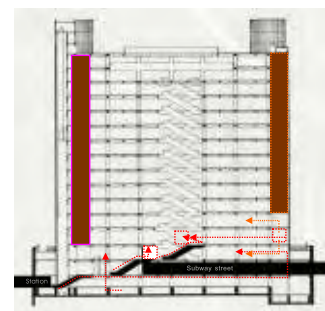
空間內感區域分析

◀ CONCEPTUAL PROGRAMMATIC DISTRIBUTION

According the difference of the spacial serving function, the sharing zone will be decided by the original structure of department store. Consider with the infrastructure and circulation of different system, the distribution of serving center will be changed. The serving center is multi-function. It could be counter, restaurant, gym.....etc. It can be connecting with the same serving system of the existent department store. Therefore, while the location be decided where connecting with department store, the new serving system will be efficiently operated



- Main lobby
- Sub-lobby
- Restaurant
- Gym
- Conference
- Circulation of customer
- Circulation of service



< EXPERIMENTATION OF VERTICAL DISTRIBUTION 垂直分配の實驗

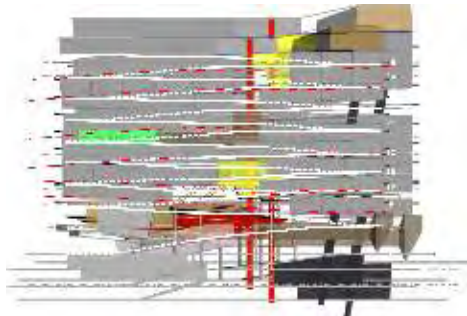


Diagram of programmatic distribution



Mapping of the longitudinal section



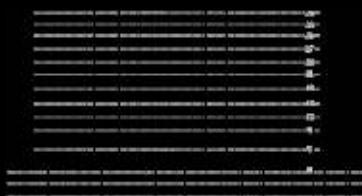
Add sub-circulation system

- | Elevator
- - - Cleaning
- - - Short cut
- Connecting area

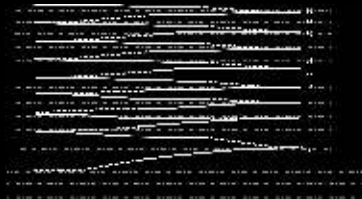


Imagination of Elevation

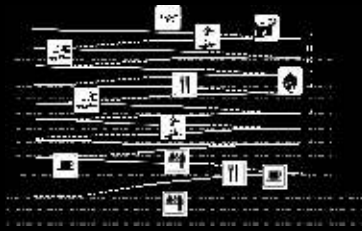
< DEVELOPING ON LONGITUDINAL SECTION



Sogo floor system



New circulation system



Programmatic distribution



Location of serving center



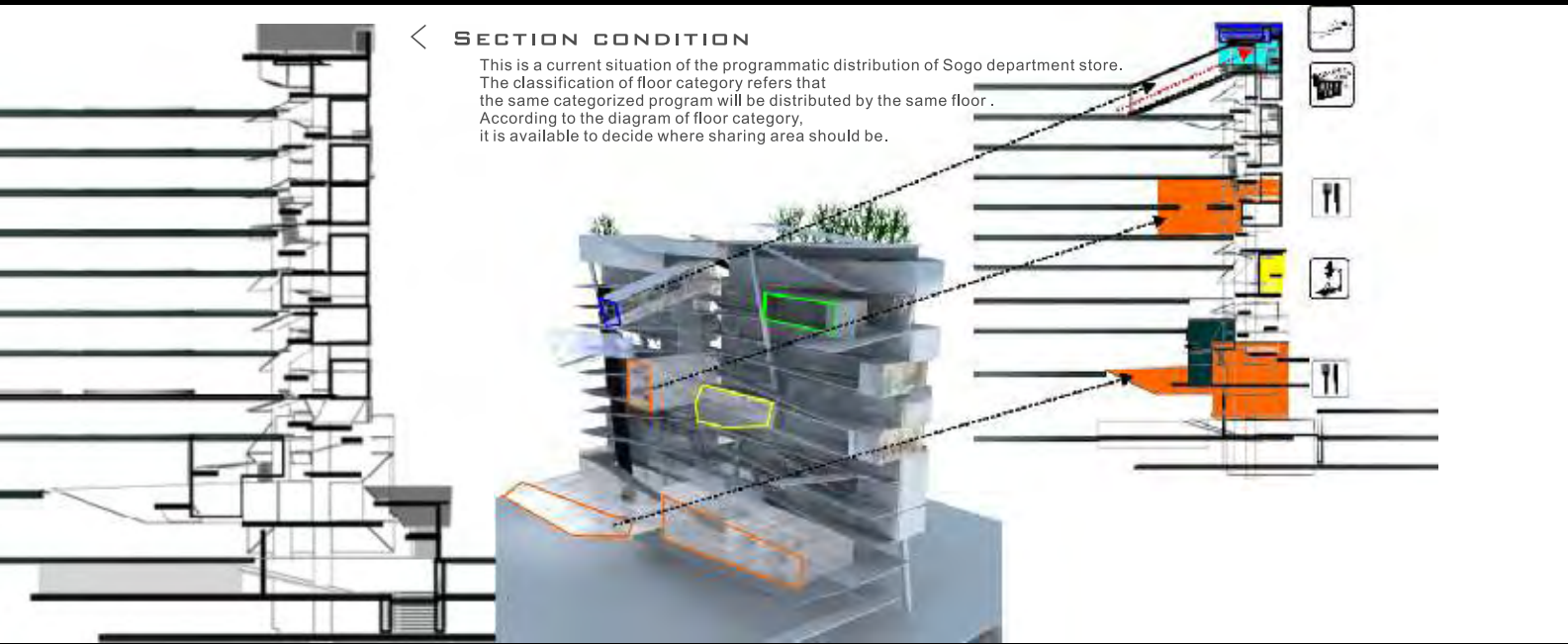
Efficient serving territory



Mapping to Sogo system



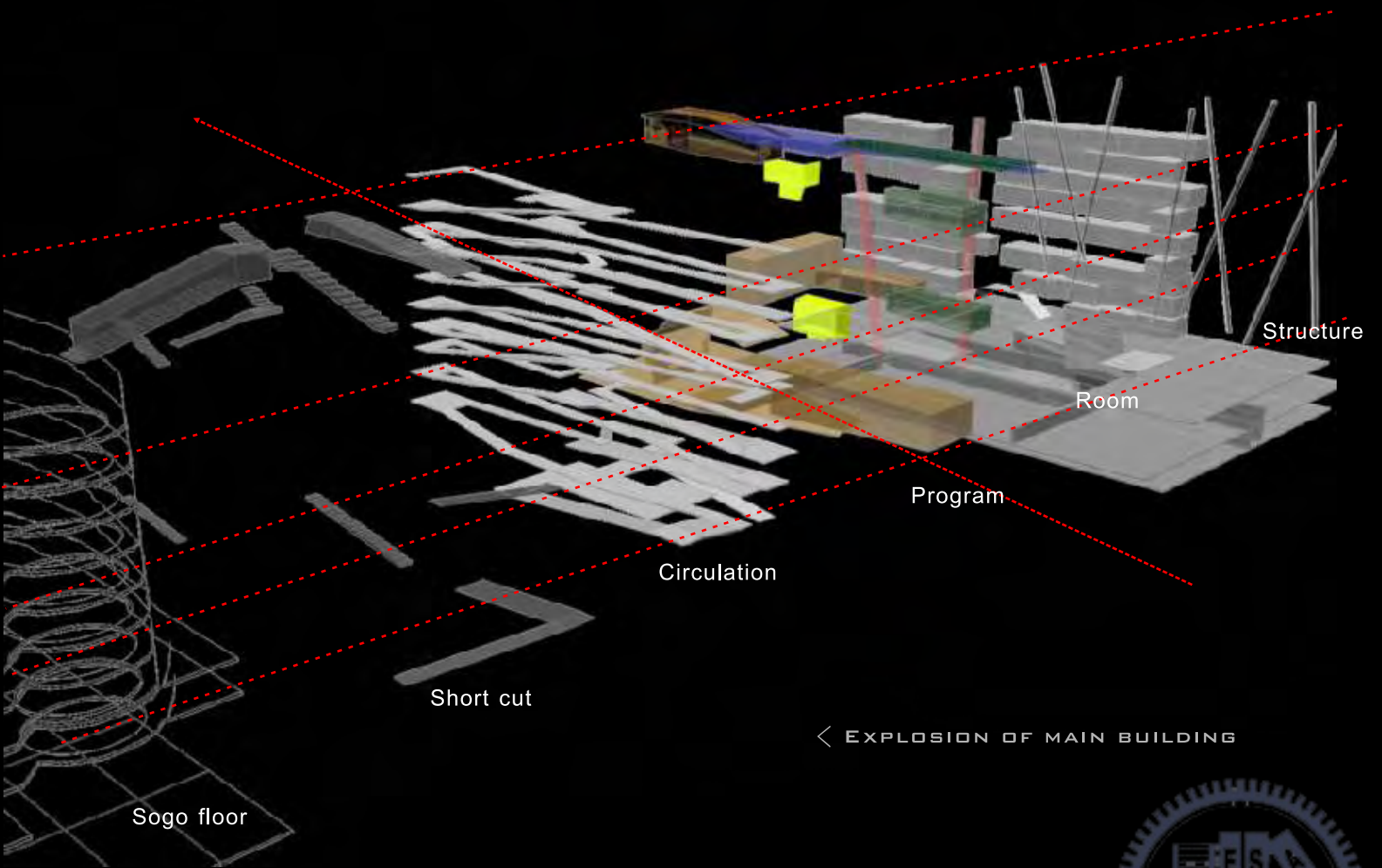
Shaping the boundary



< SECTION CONDITION

This is a current situation of the programmatic distribution of Sogo department store.
 The classification of floor category refers that the same categorized program will be distributed by the same floor .
 According to the diagram of floor category, it is available to decide where sharing area should be.

< SPACIAL ORGANIZATION
 空間組織



< EXPLOSION OF MAIN BUILDING



< SPACIAL SIMULATION 空间模拟



Elevation of daylight

- 01 Roof garden
- 02 Theater
- 03 Gymnasium
- 04 Café
- 05 Restaurant
- 06 Underground square



Elevation of night



01 Roof garden



02 Theater area



03 Gymnasium



04 05 Shopping area



06 Underground square

< INTRODUCTION OF PROJECT

This project is about how to recreate an urban landscape with the consideration of flood happenings, and also allow the people within the metropolis to enjoy the natural wonders Taipei has to offer.

The purpose of this project is how to reconnect Taipei city with the river bank. In current situation, there is an embankment which is cutting the bank and the park over the boundary. Therefore, the basis of my topic will be for the people to experience and adventure the natural beauties of the embankment

煉

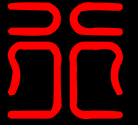
RE_02 WANDER BETWEEN THE BANK AND THE PARK

王昭智 CHAO-CHIH WANG





< RE_02



RE_EMBANKMENT



WANDER BETWEEN THE BANK AND THE PARK

PROJECT < 02

DURATION < 03 2007 - 07 2007

ADVISOR < LIANG-CHYAN CHEN



< URBAN LANDSCAPE



卯
辰
·
春

< SITE ISSUE

基地議題



< ENVIRONMENT OF TAIPEI BOUNDARY

Taipei city is the capital of Taiwan.

But in this busy international city, the embankment actually acts as the Taipei boundary against the ugly images.

With the purpose to resolve the typhoon and flooding problem

Taipei city creates a boundary to protect itself from these dangerous situations

Furthermore in order to facilitate the metropolis transportation system , just above the southern border, is the overhead pass .

Together this expressway creates a boundary .

This divides Taipei's metropolis city from the outside environment .



< INTRODUCTION OF TAIPEI CITY

臺北介紹



< HOW TO GET TO AND TO ENJOY THE NATURAL BEAUTIES ?

The large environmental area is just outside of the embankment .
 People within the city find it difficult to get to and to enjoy this nature's wonder .
 Therefore, it is necessary to create a new landscape
 To allow the people within the metropolis to enjoy the natural wonders Taipei has to offer .

< DIAGRAM OF ANALYSIS OF TAIPEI CITY



Figure ground

Green and blue

Green zone

< SITE INTRODUCTION

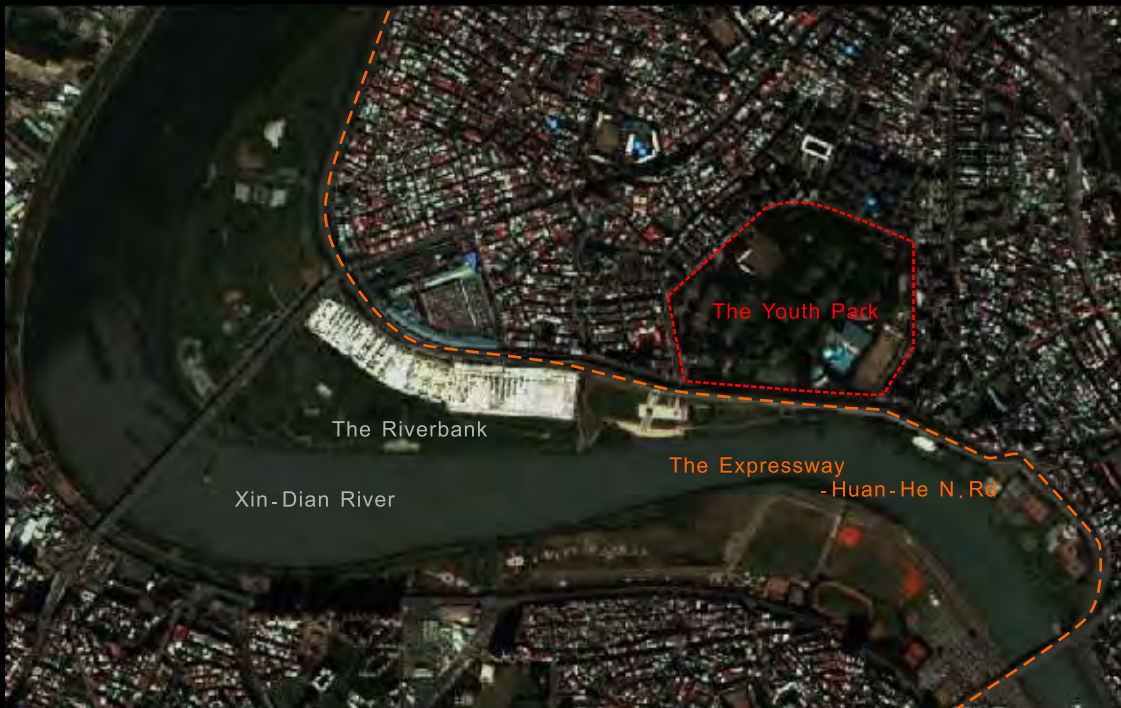
臺灣永紹



CURRENT CONDITION

< THE CUTTING BY THE EXPRESSWAY

The site is Surrounded by residential communities
 The main recreational attraction is the youth park
 with surroundings of fast paced roadways
 The highway overlooking the embankment with Huan-He south road
 There is a cut between the natural environment and the artificial Youth park



< AERIAL VIEW OF LOCATION

Using Google Earth's aerial view
 we are able to view the distance relationship between
 Xin-Dian River, riverbank, Huan-He South Road
 as well as the youth park.



< INTRODUCTION OF TAIPEI CITY

臺北介紹



< IF THERE IS NO EXPRESSWAY AND EMBANKMENT ?!

If one were to view from Taipei's Opposite shore - Xin-Dian and there is no buildings and embankment dividing Xin-Dian River. Truthfully, the view would be of Yang-Ming Mountain.

Southern surroundings of Taipei city : Xin-Dian River
Northern surroundings of Taipei city : Tamsui River

< PERSPECTIVE VIEW FROM THE OPPOSITE SHORE

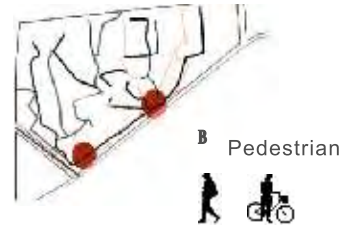
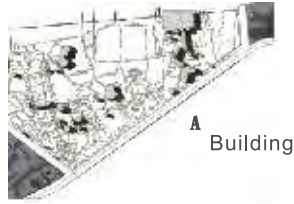


< COMPARE WITH THE CONSTITUTIONS

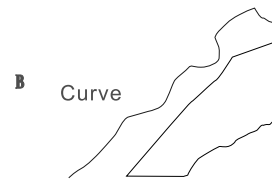
形意構成比較



Pattern of **artificial**



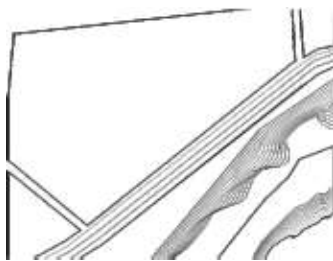
Pattern of **nature**



From base pattern, I discover there are mainly two kinds of elements constitutions
 On the side of the youth park there is a broken line
 On the Xin-Dian river bank is a curved line

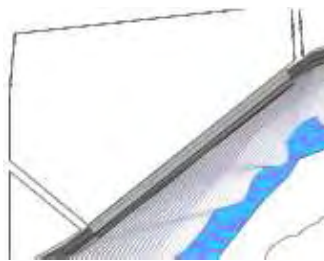
< ANALYSIS OF SITE

基地分析



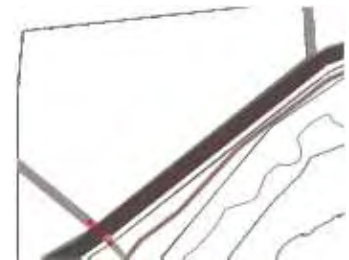
— Contour lines
 — Block

Pattern



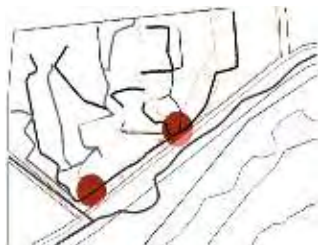
■ High-water mark
 ■ Eustatic zone
 ■ Low-water area

Water zone



■ Express route
 ■ Local route

Main vehicle circulation



— Circulation
 ● Node

Pedestrian



■ Artificial
 ■ Nature

Grass and Trees



■ Public space
 ■ Housing area

Building area



< TRANSITION OF TAIPEI BOUNDARY

台北邊界轉折空間



< THREE UNIQUE SPACIALTIES

From these base analysis one may discover that there are three unique specialties:
 Artificial youth park
 The natural riverbank
 And the city's infrastructure



STRATEGY OF THE NATURAL BANK

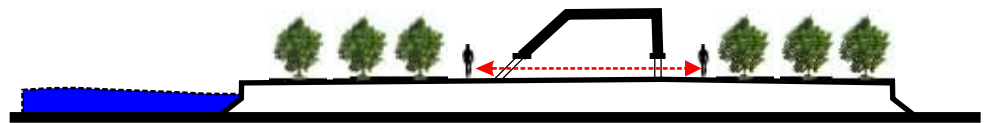
對自然環境的策劃



the embankment simultaneously is the expressway and a landscape



DIAGRAM OF SECTION

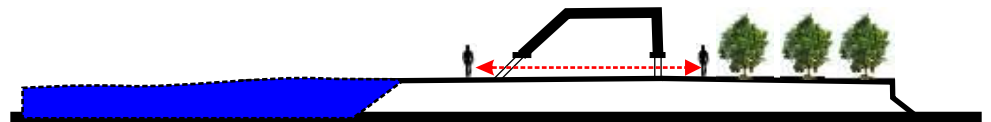


Phase 01

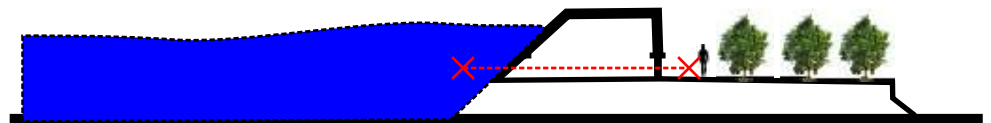
INTRO OF SITE

With the consideration of flood happenings, is this projects greatest focus.

Therefore, the basis of my topic will be for the people is to experience and adventure the natural beauties of the embankment.



Phase 02



Phase 03

CIRCULATION RULES

斷線重振連立

DIAGRAM OF SECTION

The new landform also extending the riverbank and combine with the embankment

The ditch and riverbank unites by a contour line
Starts to distort the original embankment section area

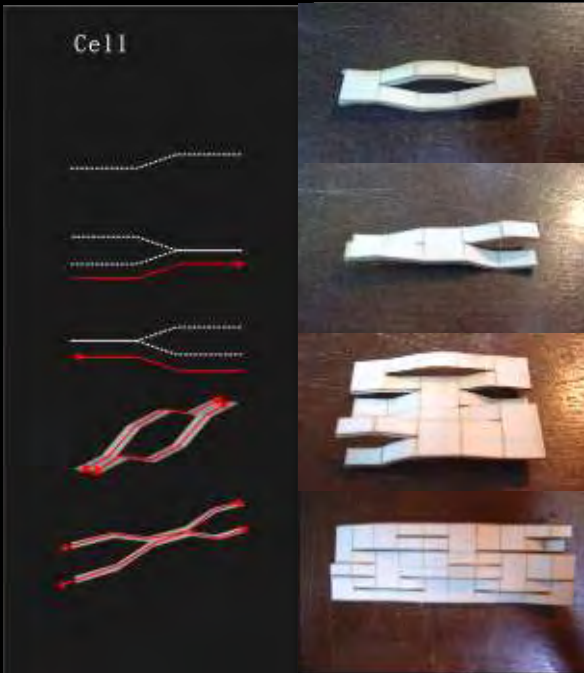
Convert to curve

Original spline
New spline



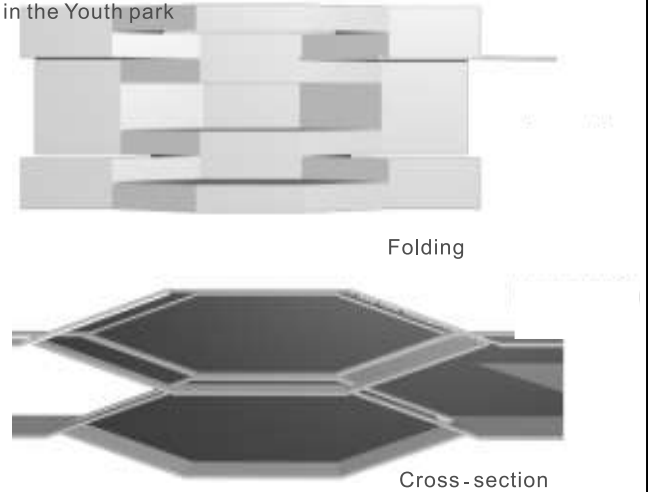
STRATEGY OF THE ARTIFICIAL PARK

對人造公園的策略



EXPERIMENT WITH CELLULAR SKIN SYSTEM

Experiment with cutting sheet of different cut to create a kind of landform which is composed of broken spline toward the artificial pattern. It also reform a new landform to integrate the original pattern in the Youth park.



CELLULAR SKIN SYSTEM

THE RULES OF TRANSFORMATION

轉動規則建立

SEQUENCE OF ANALYSIS

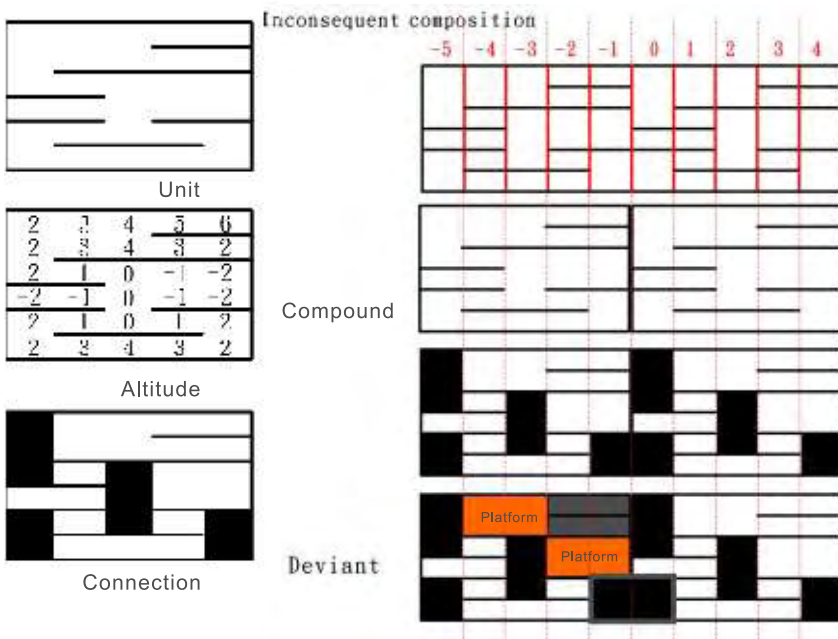
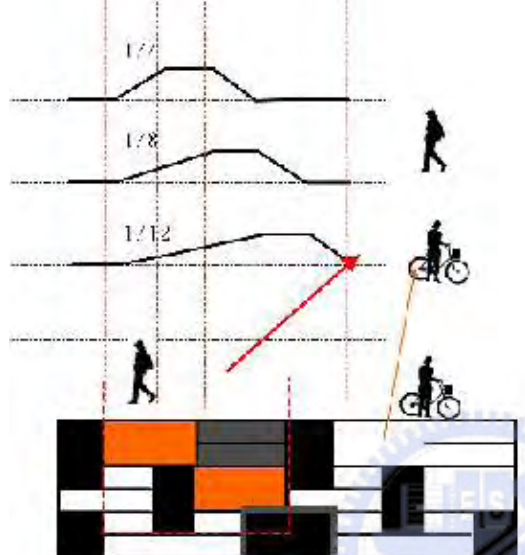
Combine the same figure in illogically way can create a new figure which broke the prototype and the original rule. In the variable type, it creates a new slope and also produces a new sized platform. The different slope can also provide for different activities and different character

ANALYSIS OF CONSEQUENCE MODEL



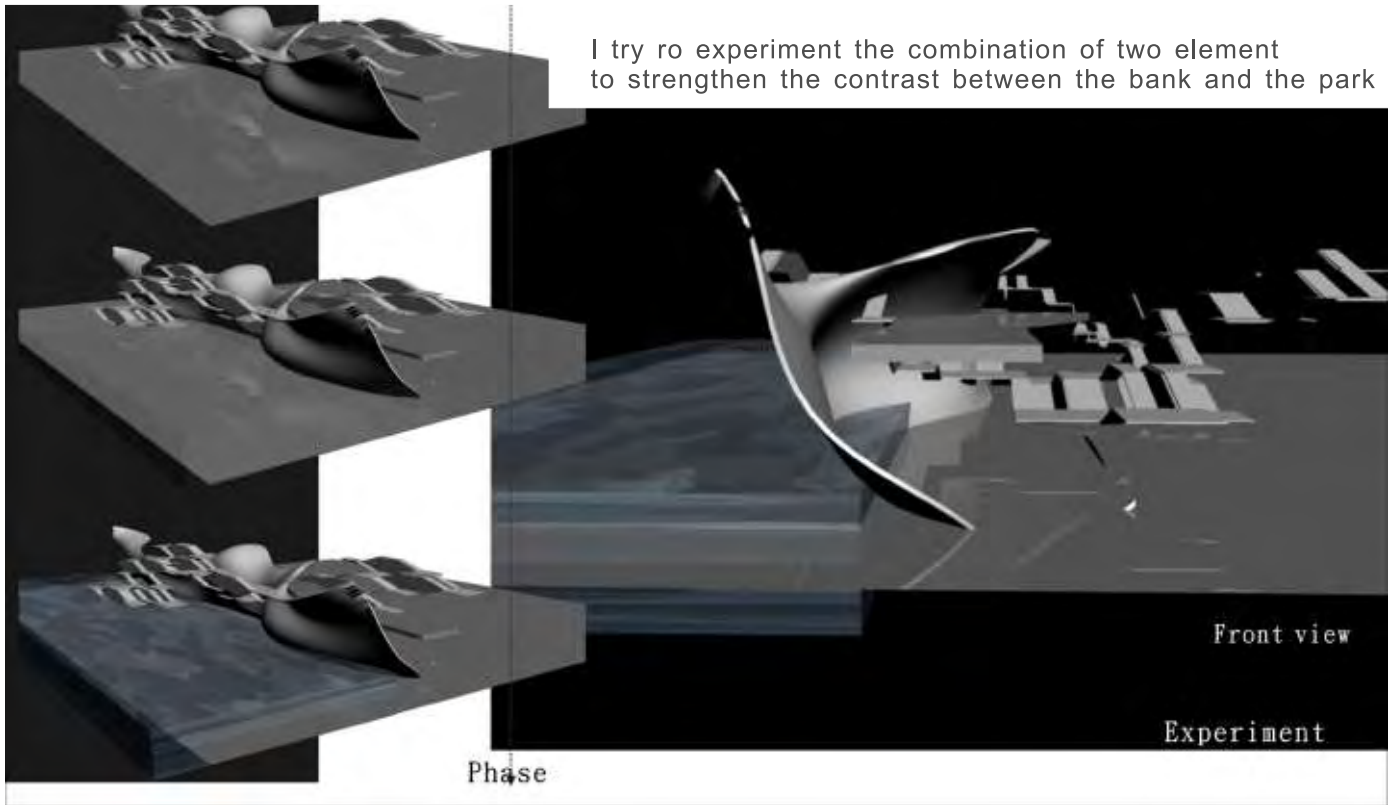
ANALYSIS OF DIFFERENT SLOPE

Different slope for different character



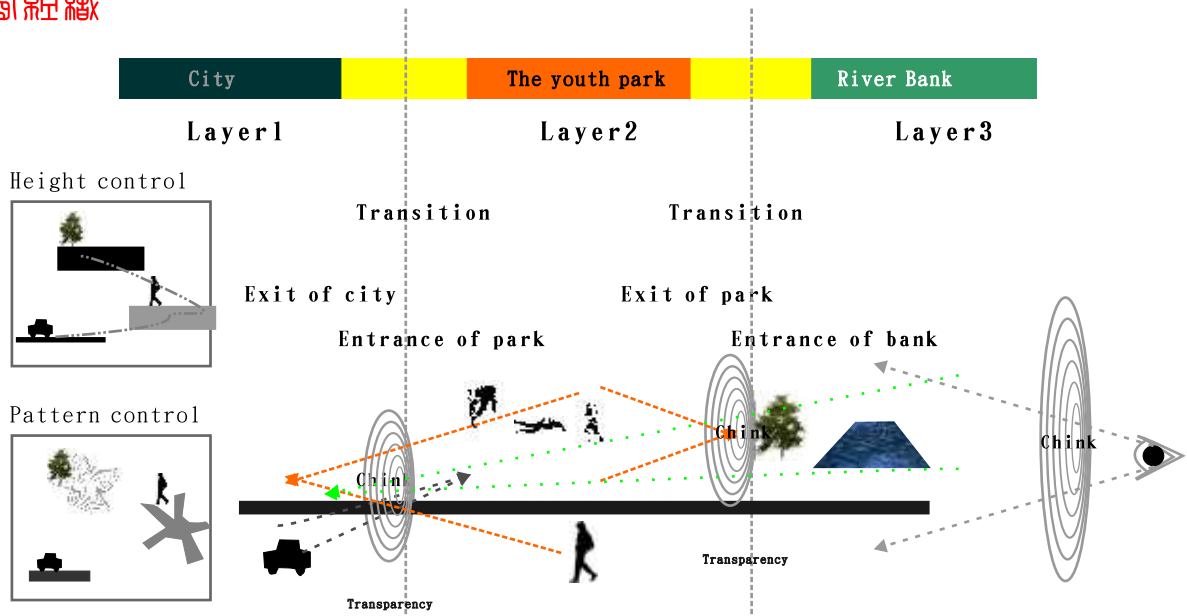
< EXPERIMENT WITH TWO ELEMENT

混種元素之實驗



< SPACE ORGANIZATION

空間組織



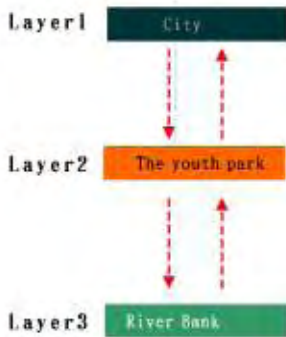
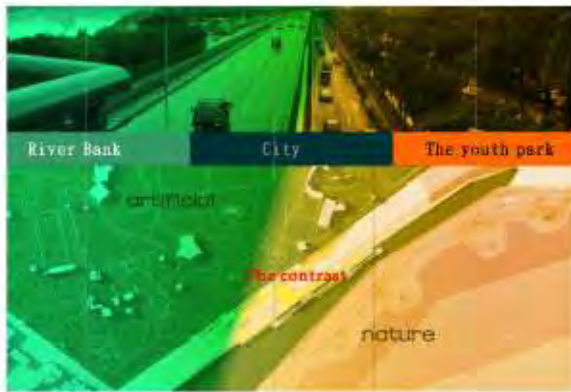
< CONCEPT OF SPACIAL SEQUENCE

The transition of spatial sequence strengthen contrast between the bank and the park.



TRANSITION OF SPACE

空間轉譯



City

Layer1

Exit of city



Transition of pattern



Transition of texture



Programmatic transition

The youth park

Layer2

Exit of artificial



River Bank

Layer3

Exit of nature



Wander between the bank and the park



< CONSEQUENCE
 殊種交集的综合



<Longitudinal section



<Top view



Circulation



Trees



Grass and shrubs



Distribution of program



AA^



BB^



CC^



Dd^

< Cross-section



< **THE NEW MOUNTAIN OF TAIPEI** — FOR THE CIVILIANS OF XIN-DIAN

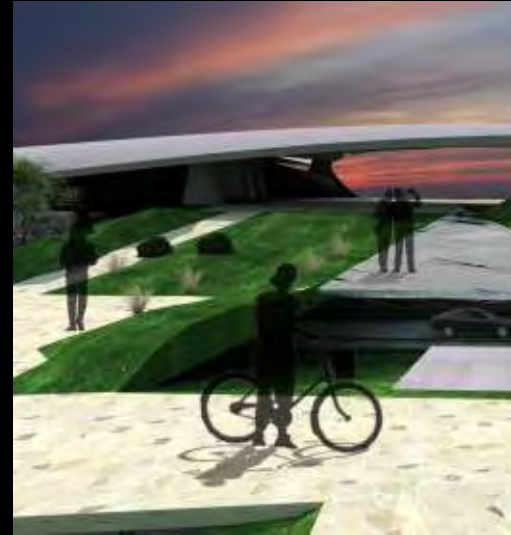
The civilians of Xin-Dian looks out at Taipei and discover that people will be able to walk between the mountain and river—penetrating the circular tunneland can see the true beauty of Taipei's metropolis scenery.





The open-aired pool

03



The exit of the



The open-aired bar

02



The entrance of the Youth park

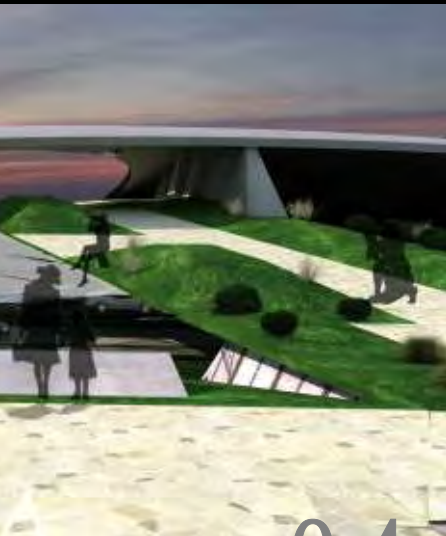
01



< LIBERATE THE URBAN WORK

Recreating the dike work place
outside of the dike and natur





The Youth park

04



The entrance of the river bank

05



OUND

by the mountain image to link the inside and
al environment

< Site plan



卯
辰
·
春

< INTRODUCTION OF PROJECT

The concept of the five Elements is used in ancient Chinese cosmology
(Include: Metal, Wood, Water, Fire, Earth)

The Five Elements can grow and decline in circulation and also composed
of the Ten Heavenly Stems.

Using the system based on the Five Elements relationship can develop a
Series of methodology of special recombinant complexity.

In the end, the whole building no matter from the composition by program, and
configuration of spacial unit, to the circulation system even in the pattern in
Elevation, are created and formed by the system from the Five Elements .

This is an exercise by the logical design process based on different research.

煉

RE_03 THE FIVE ELEMENTS

王昭智 CHAO-CHIH WANG





< RE_ 03



RE_COMBINANT COMPLEXITY

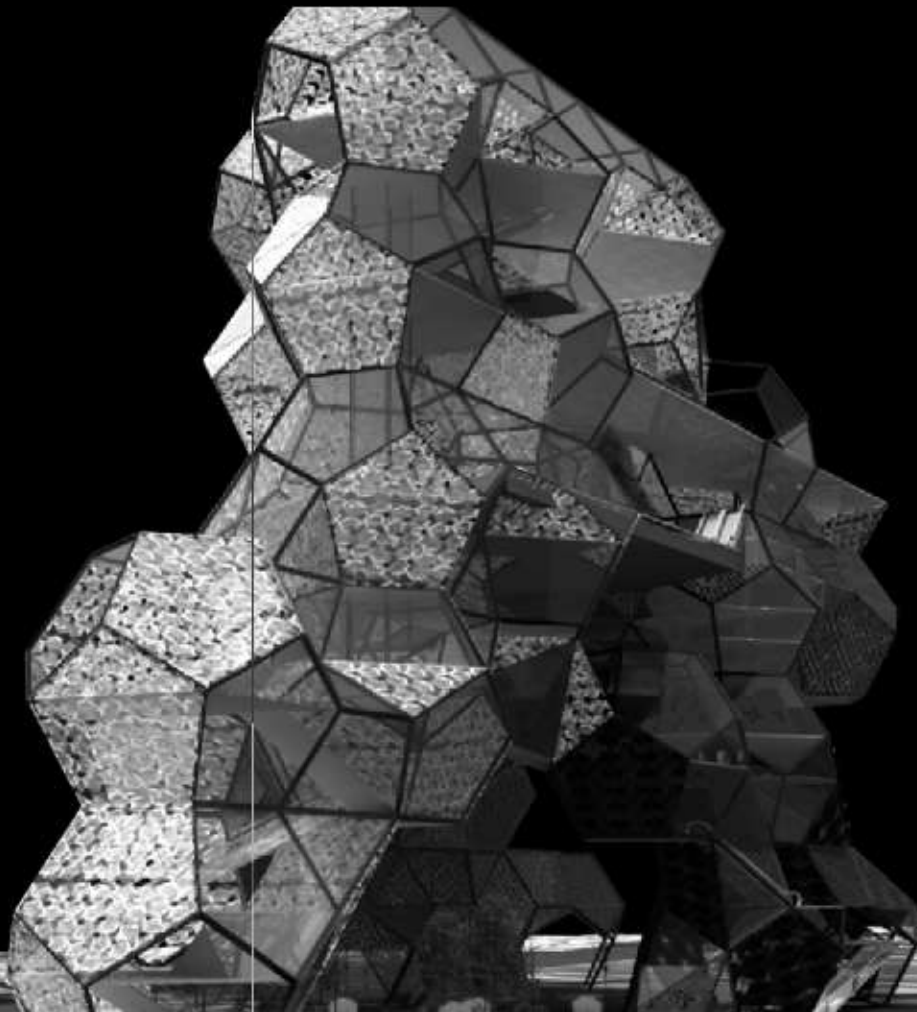
五行

THE FIVE ELEMENTS

PROJECT < 03

DURATION < 07 2007 - 01 2008

ADVISOR < PO-TING TSENG



< THE HYBRID ARCHITECTURE



國立中央大學
建築研究所



< THEORY OF THE FIVE ELEMENTS

五行相生與相剋



五行相生



五行相剋

< DEFINATION OF THE FIVE ELEMENTS

The theory of the Five Elements is used in ancient Chinese cosmology. The Five Elements can grow and decline in circulation.

< THE FIVE ELEMENTS VS THE TEN STEMS

五行 vs 天干

天干相剋

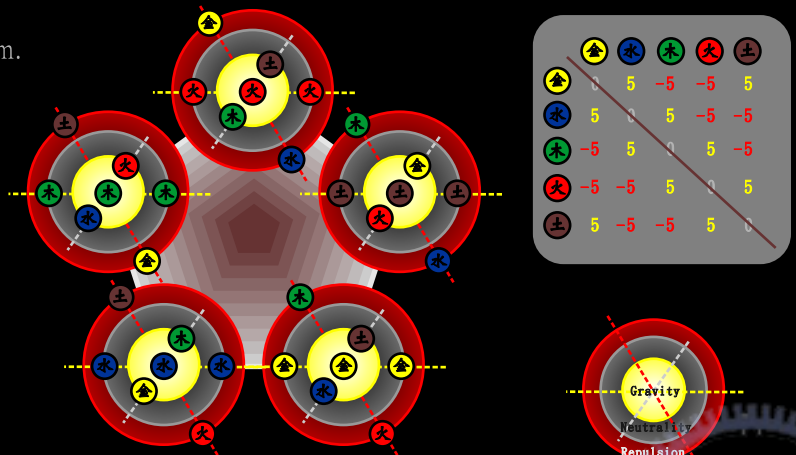
庚辛金	剋	甲乙木
壬癸水	剋	丙丁火
甲乙木	剋	戊己土
丙丁火	剋	庚辛金
戊己土	剋	壬癸水

天干相合

甲 陽木	+	己 陰土	=	土
乙 陰木	+	庚 陽金	=	金
丙 陽火	+	辛 陰金	=	水
丁 陰火	+	壬 陽水	=	木
戊 陽土	+	癸 陰水	=	火

< THE FIVE ELEMENTS VS THE TEN STEMS

The ten Heavenly stems stand for the Yang ("陽") and Ying ("陰") in the Five Elements. The Five Elements are composed of the ten Heavenly stems. The subtractive relation between ten Heavenly stems are based on the five elements circulative system.



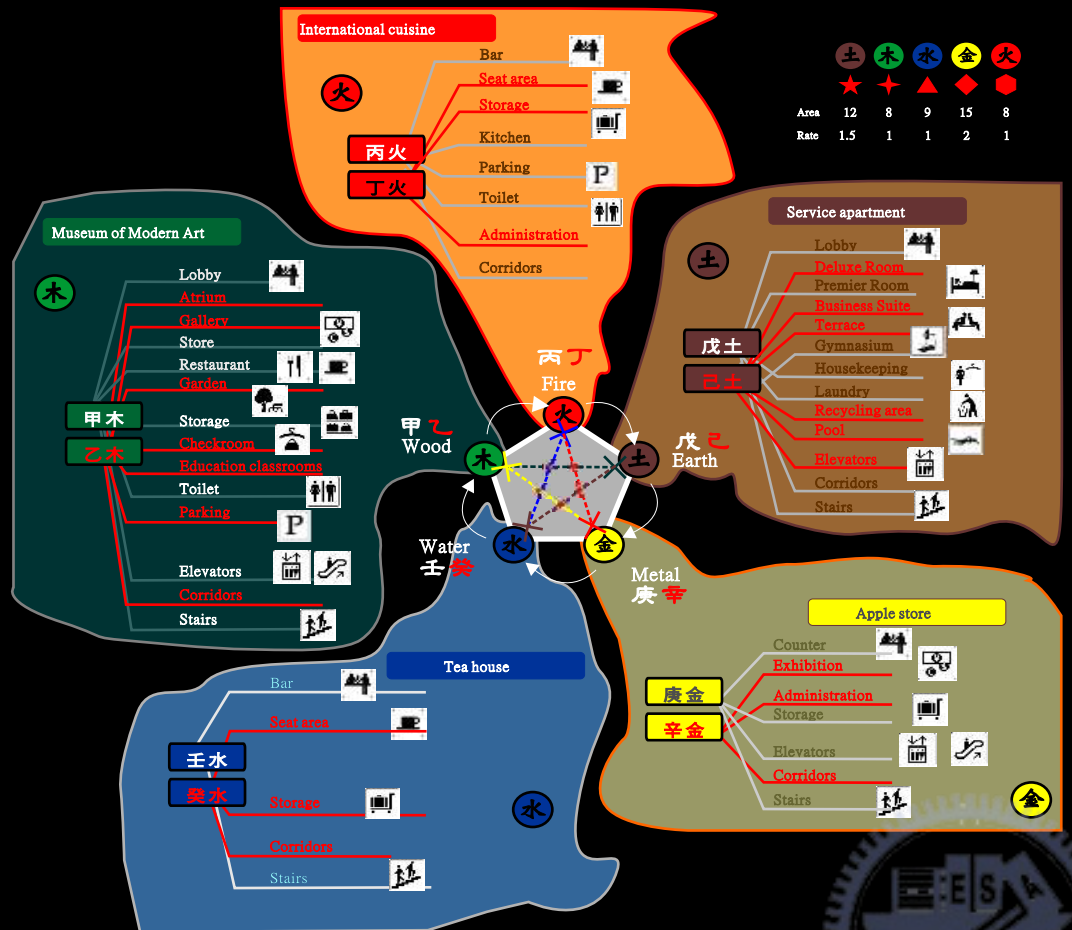
< DEFINATION OF THE FIVE ELEMENTS PARAMETER

PROGRAMMATIC CATEGORIZATION

空間計畫分類

THE FIVE ELEMENTS VS PROGRAM MATRIX

According to the theory of the Five Elements, different attributes of spacial contents could be corresponded to the Five Elements. In compliance with this principle of classification, we can correlate spacial contents which are in existence with the Five Elements.



CLASSIFICATION OF PROGRAMMATIC CATEGORIZATION





< SITE ANALYSIS

五區據勢視見建立

Site is a parking area near the Far Eastern Mall which is a highly commercial area presents sleek and vertical structure . This parking area located on the Duen Hua- Nan. Rd and An -Hen Rd. This area is integrated resident and commercial character.



SITE ENVIRONMENT



< INTRODUCTION OF SITE

< CURRENT SITUATION



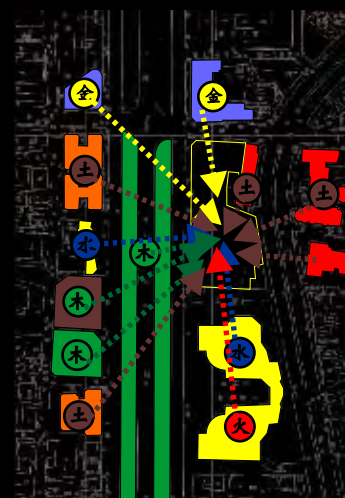
< AERIAL VIEW OF LOCATION

< SITE ANALYSIS WITH THE FIVE ELEMENTS

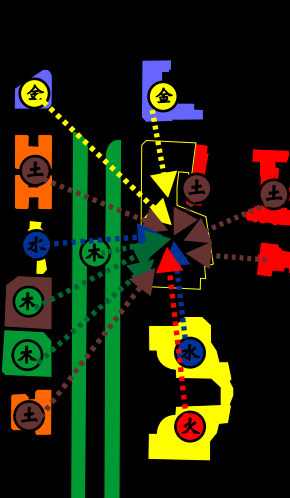
五區據勢視見建立



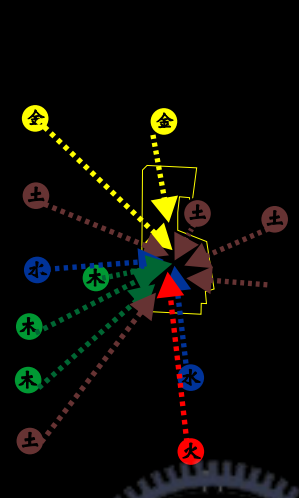
Distribution of Program by site



The five elements classification with current program



The effect of the five elements



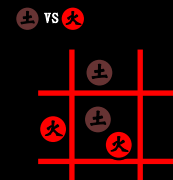
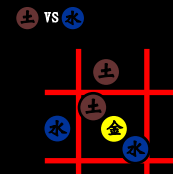
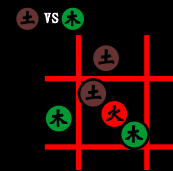
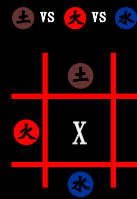
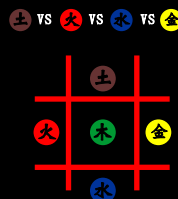
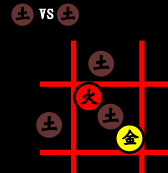
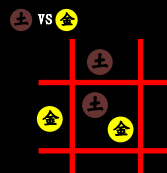
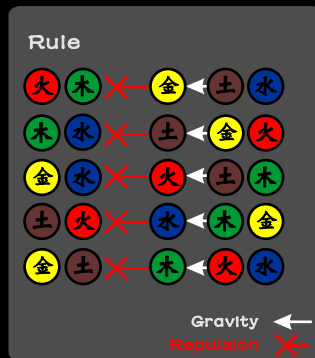
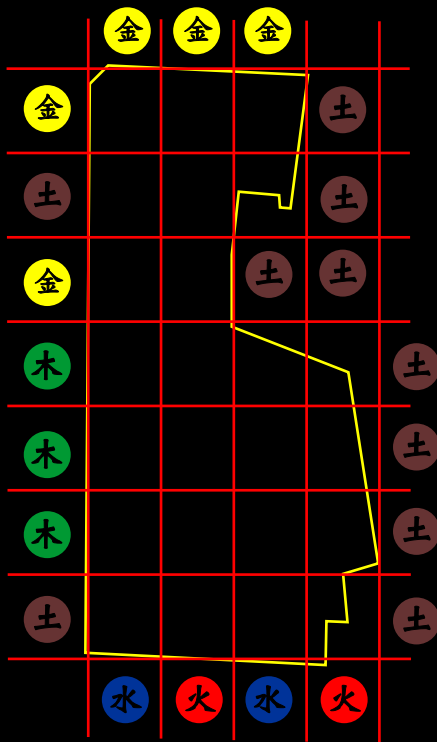
- Hotel
- Bank
- Residential area
- Park
- Office building
- Market

< DIAGRAM OF SITE WITH THE FIVE ELEMENTS



< UNIT GENERATION SYSTEM

五氣單元生成系統



< RULE OF THE ARRANGEMENT OF THE FIVE ELEMENTS

According to the theory of the five elements which circulated each other, and also has the gravity and repulsion with each other, creating the rule of the nine space theory. This rule is a composition of programmatic distribution. In the nine space rule, each space has own character which is decided by the element of other side.

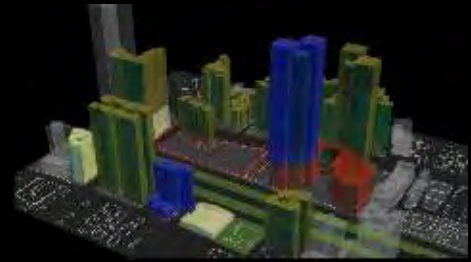




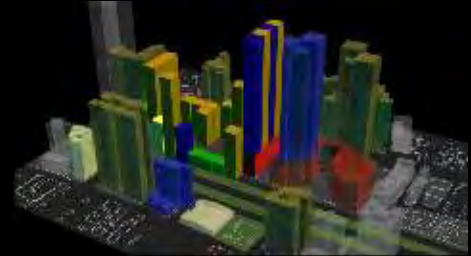
< UNIT arrangement system

五張單元排列系統

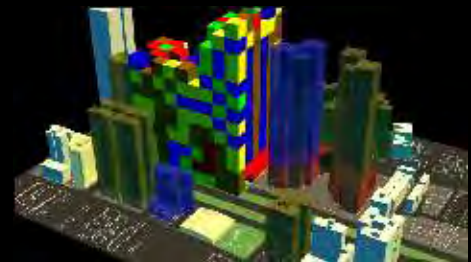
The spacial character in my building will be affected by surroundings environment. Therefore, each area will have different program character. This programmatic content in whole building are composite by the methodology of the five elements.



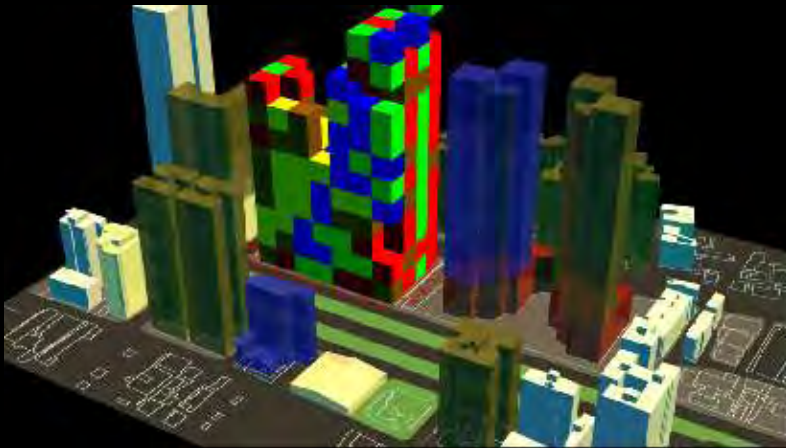
The defination of the five elements



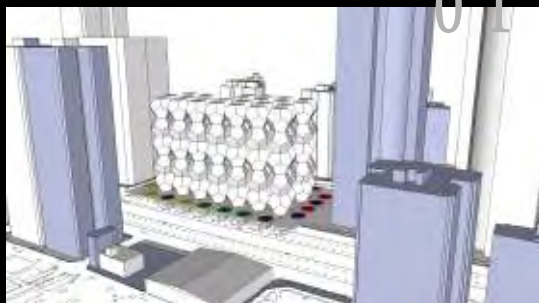
The effect of the five elements



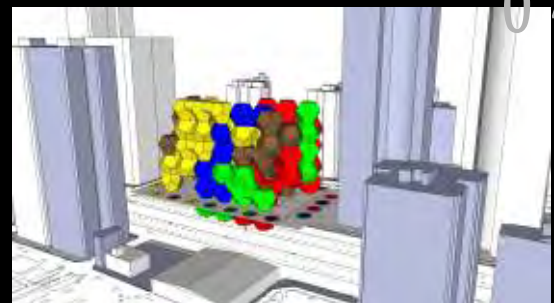
Combination of the five elements



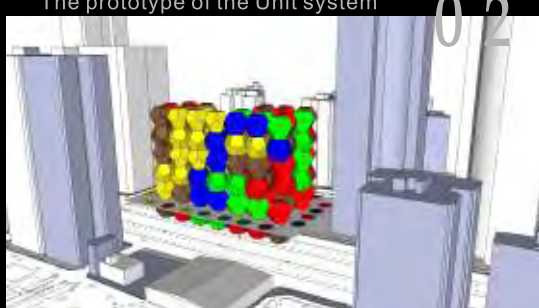
< UNIT GENERATION SYSTEM WITH THE FIVE ELEMENTS



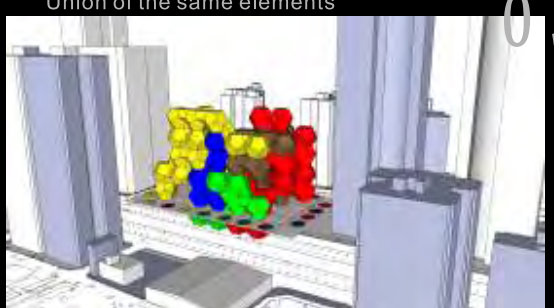
The prototype of the Unit system



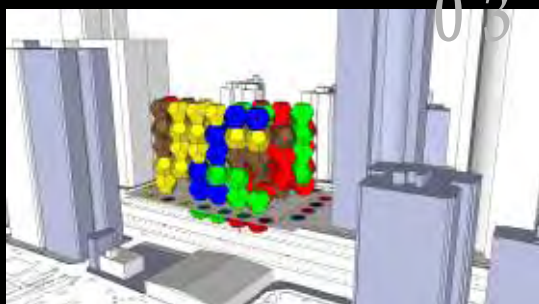
Union of the same elements



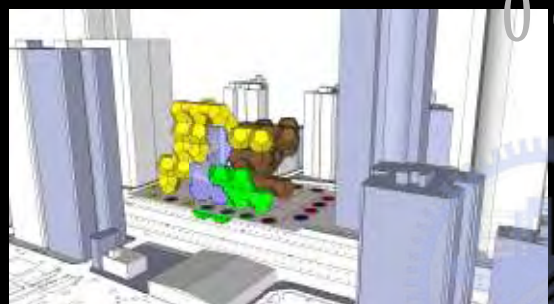
The arrangement of the five elements



Subtraction (minority)

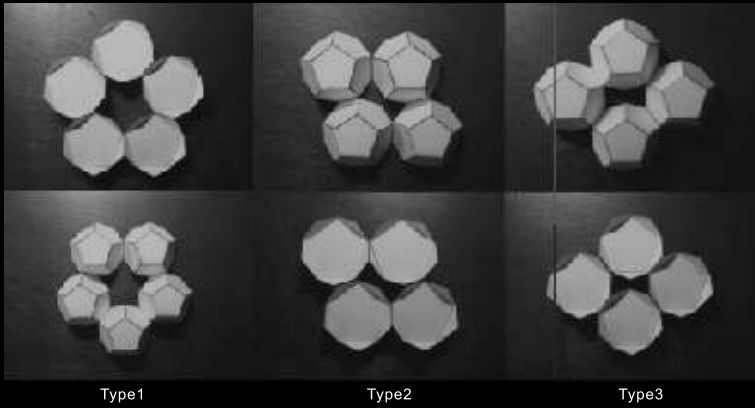


Subtraction (single element)



Transparent (the Water element)

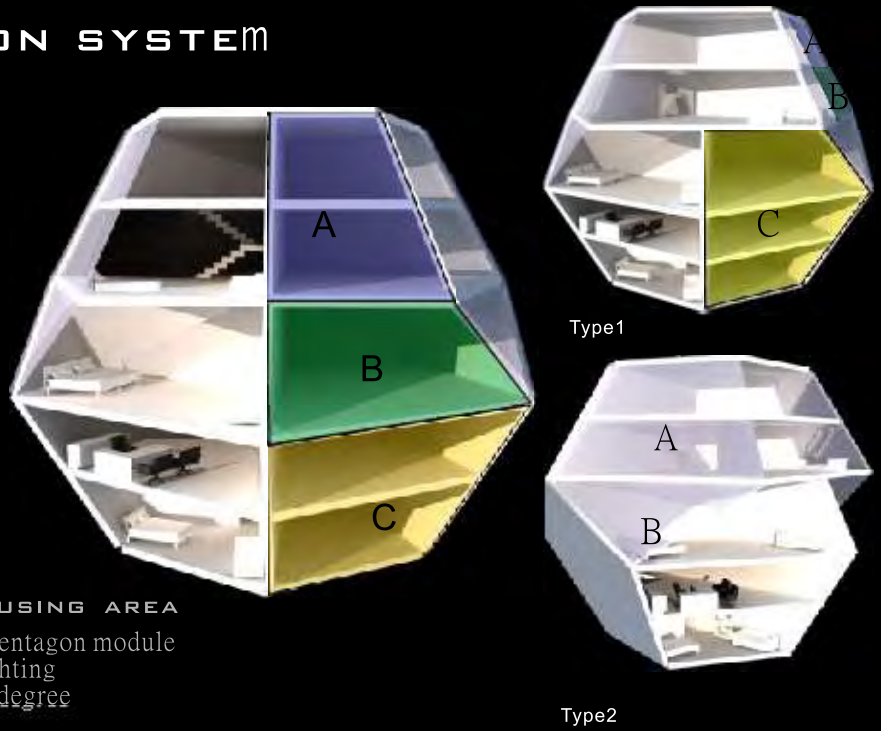




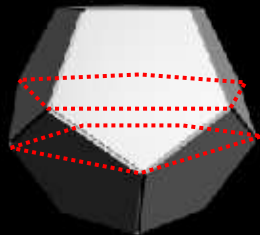
透過五角幾何型體的研究分析，找出斜率 比例 幾何關係，進而生成空間元素架構。空間透過五角單元體堆疊產生新的空間形式，另外透過不同program的分區，單元體彼此之間模矩化的數量符合不同機能的空間需求。
 如住宅單元的構成，即是將五角單元體在細分，單元體分化成三種不同住宿空間單體，透過開口部的控制及空間動線的串聯系統，同一種住宅單元有三種變化，以此構築而成建築內部空間。

< MODULE CREATION SYSTEM

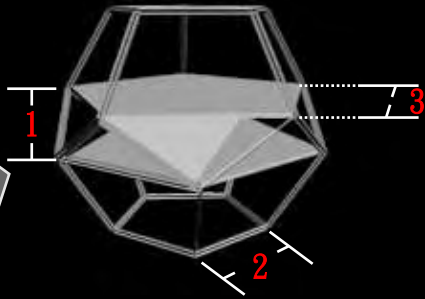
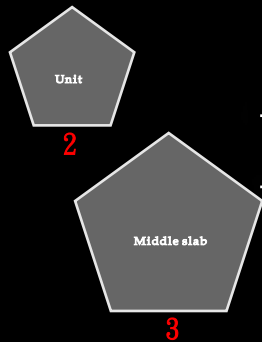
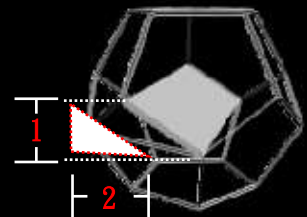
模矩化生成系統



< THE COMPOSITION OF THE HOUSING AREA
 Because of the constitution of the pentagon module
 To apply different function and lighting
 Each slab can be rotate in the same degree



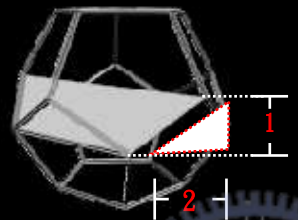
The constitution of the slab



The proportion of pentagon module

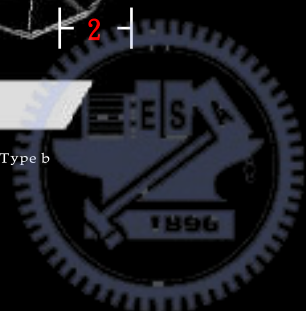


The slope of pentagon module



Type b

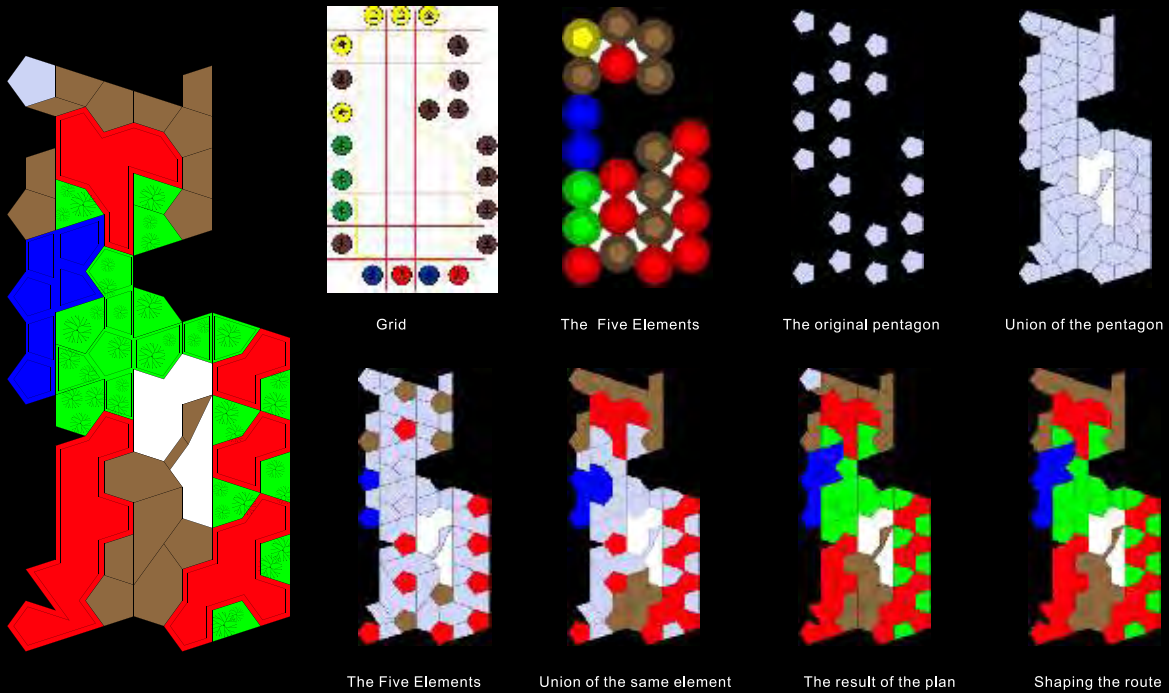
< ANALYSIS OF THE CONFIGURATION OF PENTAGON MODULE





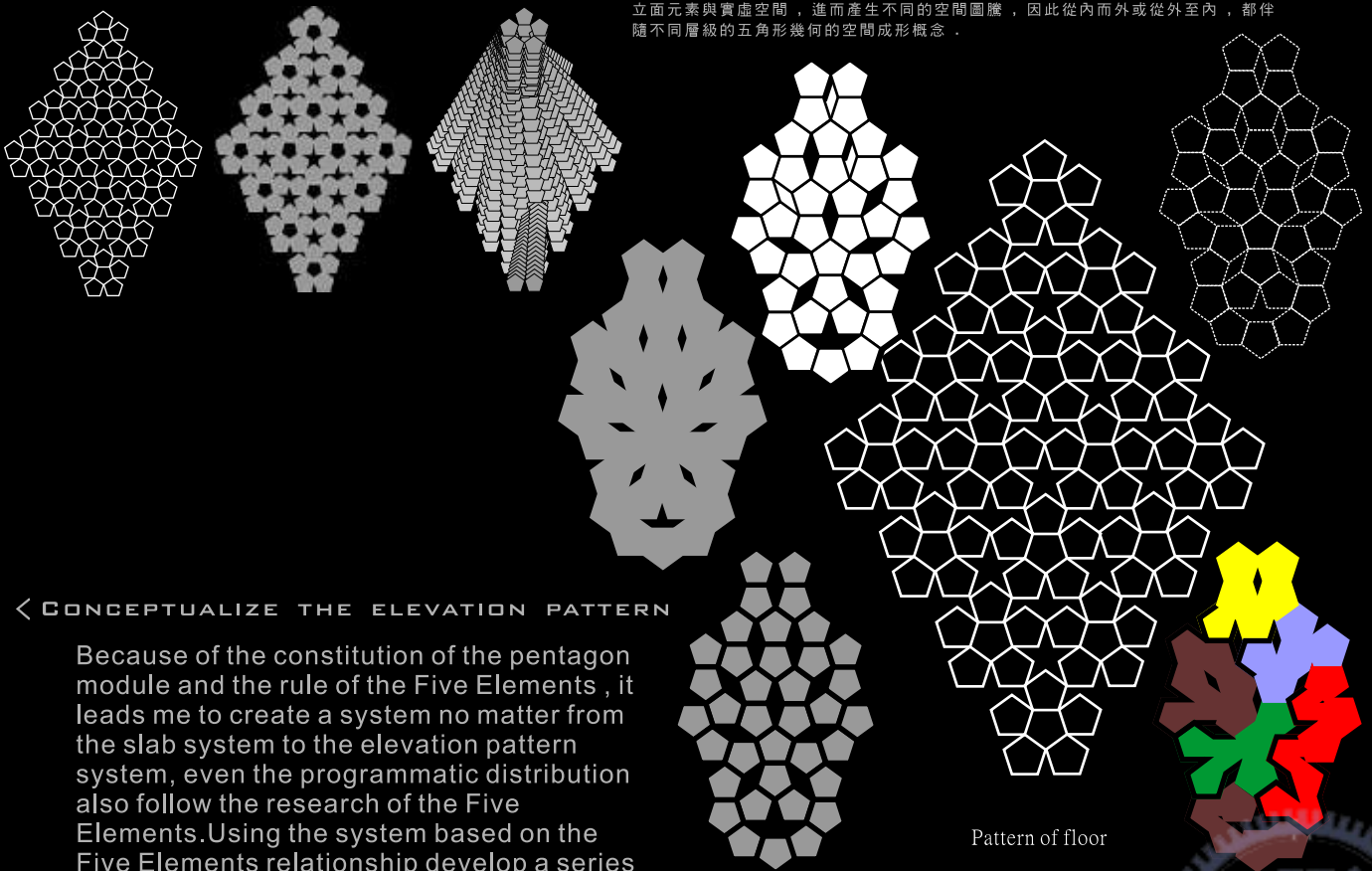
< DEVELOPMENT WITH PENTAGON SYSTEM

五角形系統的發展



< SHAPING THE SITE PLAN BY THE FIVE ELEMENTS

利用五角幾何的排列方式的研究，構成新的立面圖騰，隨著空間屬性的差異搭配不同立面元素與實虛空間，進而產生不同的空間圖騰，因此從內而外或從外至內，都伴隨不同層級的五角形幾何的空間成形概念。

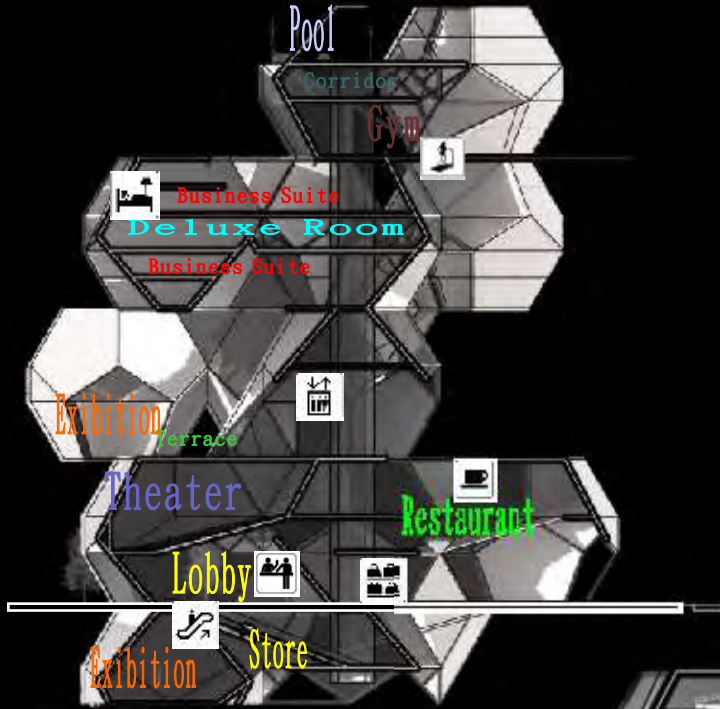


< CONCEPTUALIZE THE ELEVATION PATTERN

Because of the constitution of the pentagon module and the rule of the Five Elements, it leads me to create a system no matter from the slab system to the elevation pattern system, even the programmatic distribution also follow the research of the Five Elements. Using the system based on the Five Elements relationship develop a series of methodology of special recombinant complexity.



< LONGITUDINAL SECTION OF THE EARTH AREA
 纵向剖面图



< PROGRAM DISTRIBUTION

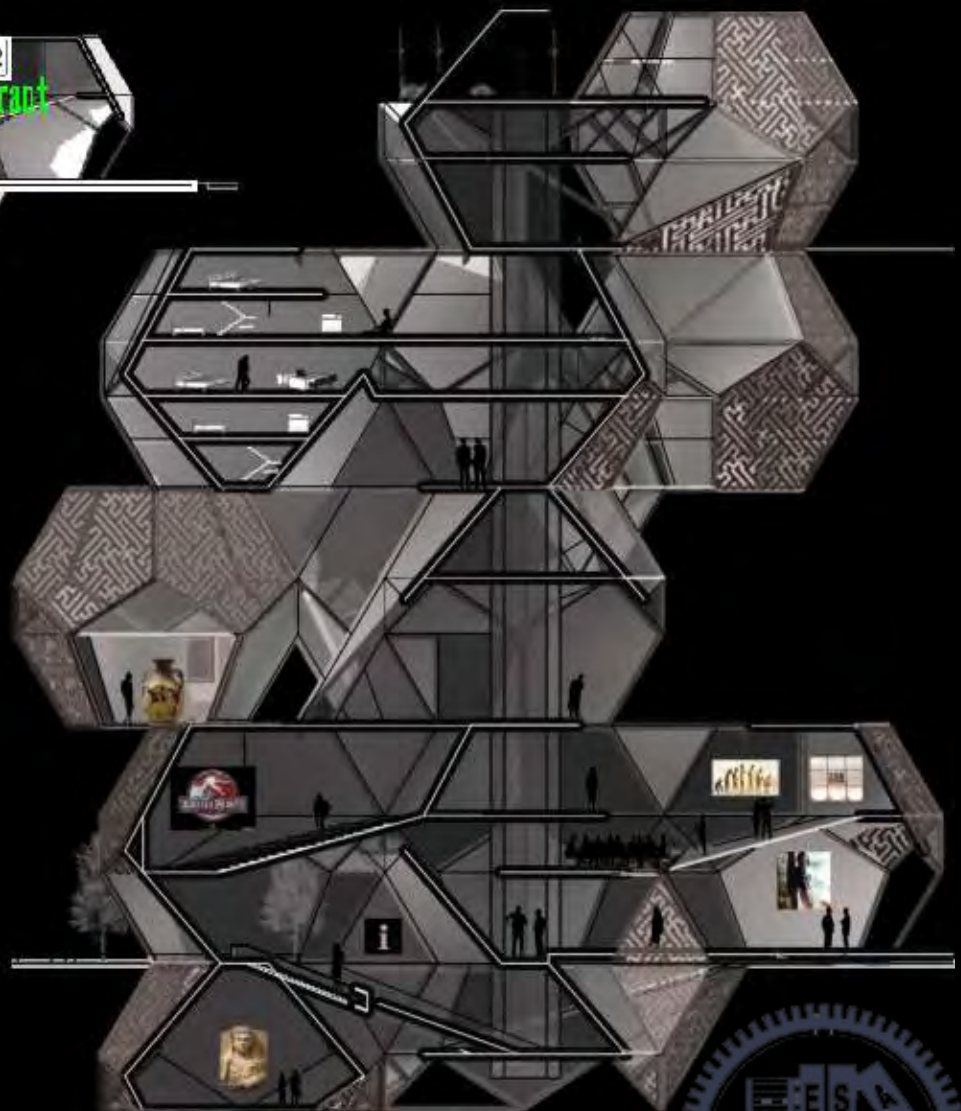
天干相合

甲 陽木 + 己 陰土 = 土

Classification of program with the Earth element

Museum of Modern Art

Service apartment



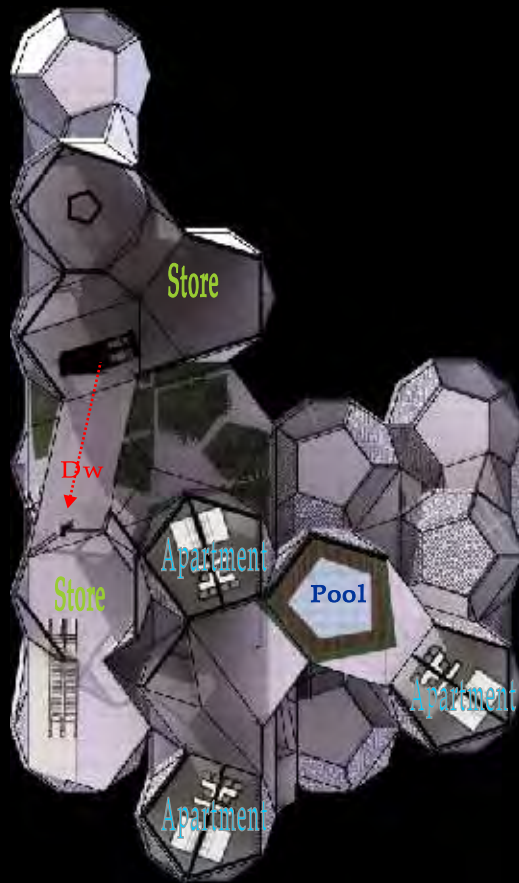
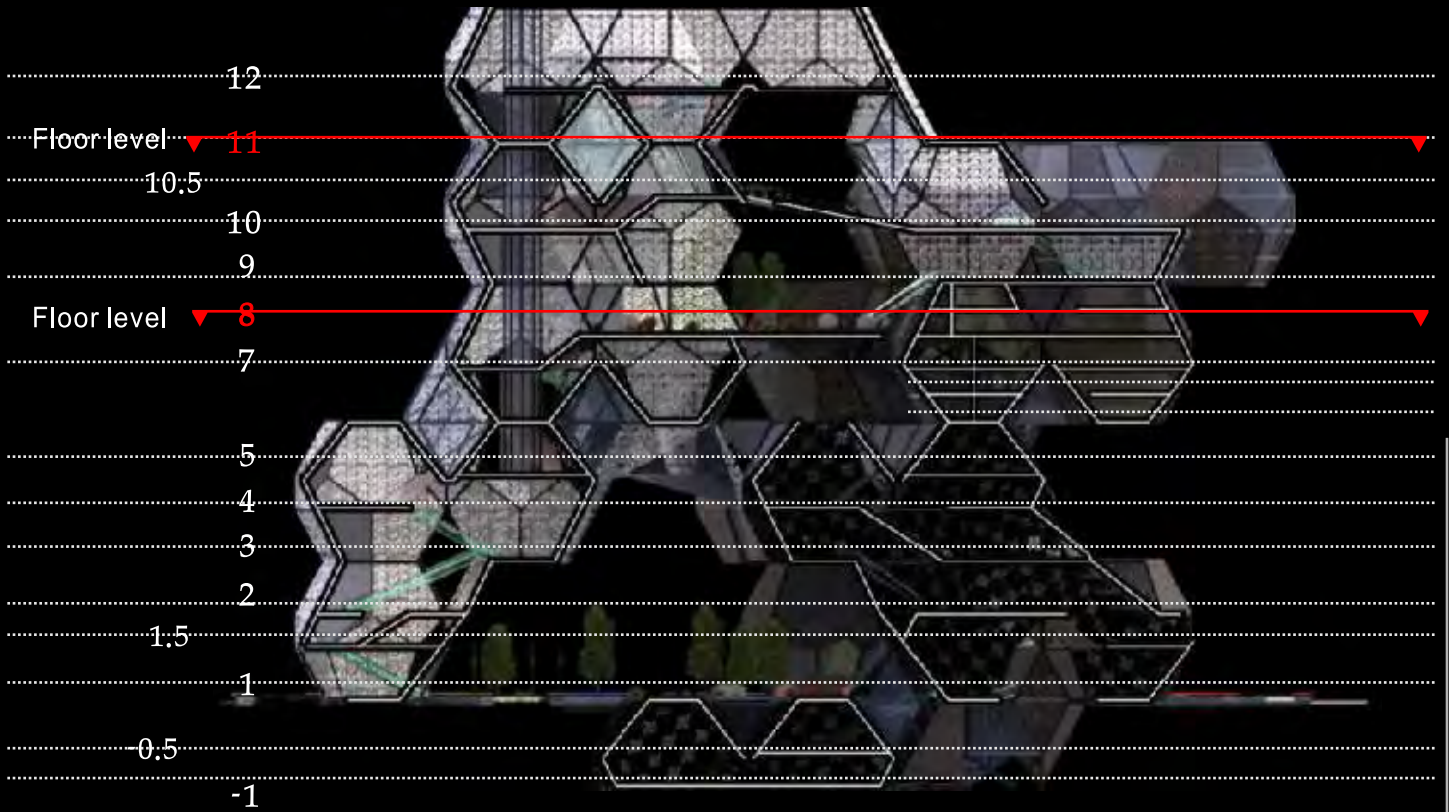
< SPACIAL IMPRESSION OF THE EARTH AREA



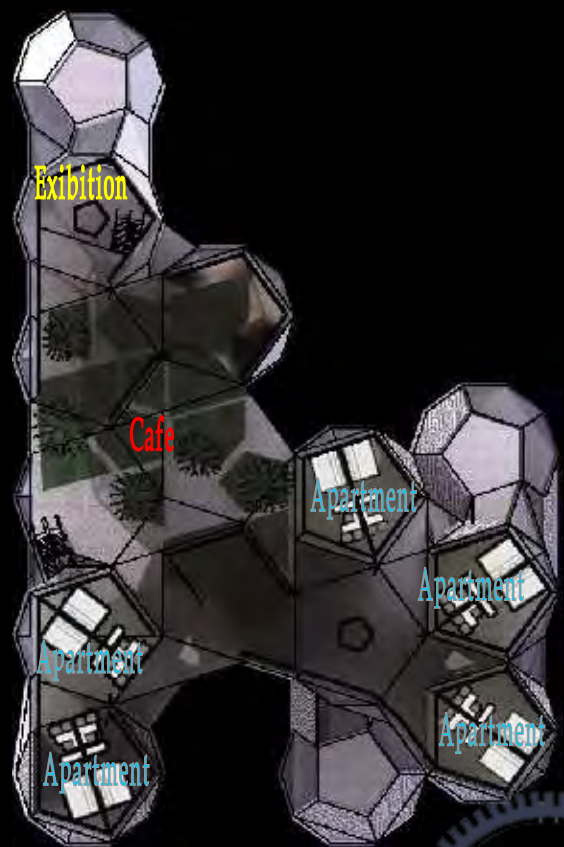


< FLOOR LEVELS OF WHOLE BUILDING

平面楼层分析



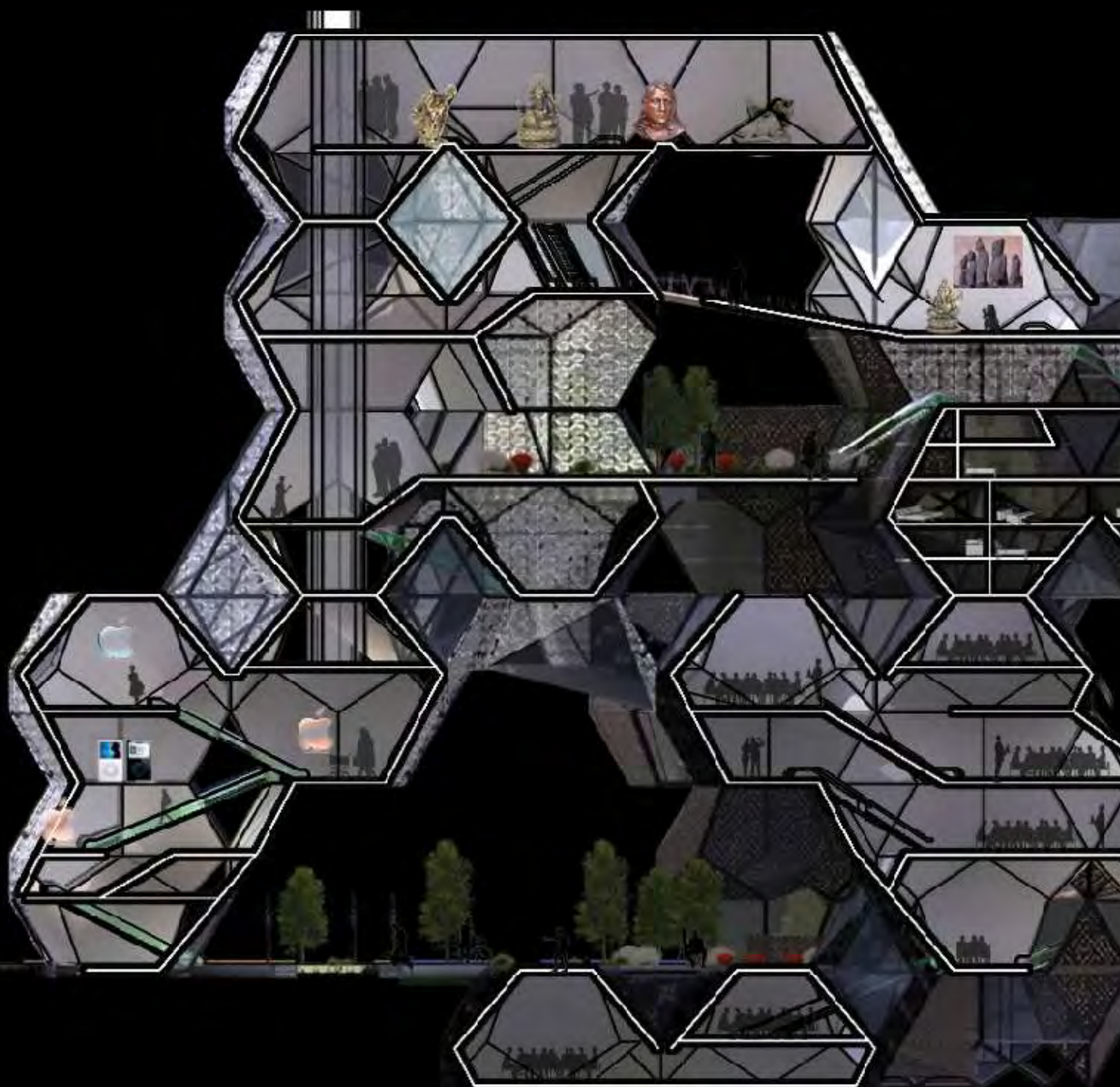
< FLOOR LEVEL 11



< FLOOR LEVEL 8



< LONGITUDINAL SECTION OF WHOLE BUILDING
纵向剖面



< SPACIAL IMPRESSION





< CLASSIFICATION OF PROGRAM WITH THE FIVE ELEMENTS



< PROGRAM DISTRIBUTION



卯
京
·
熙

< MANIPULATION OF MODEL
模型轉換

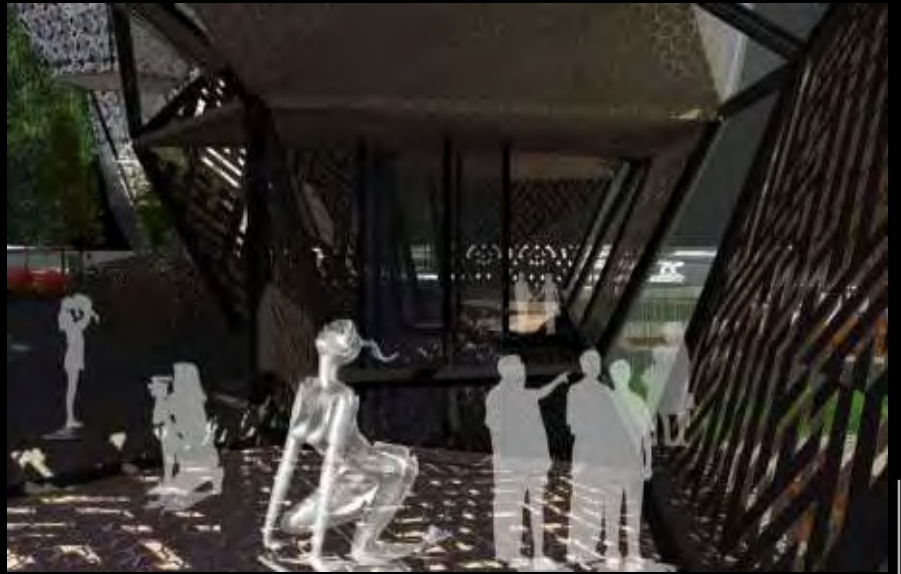


< CAPABILITY EXPERIMENT MODEL

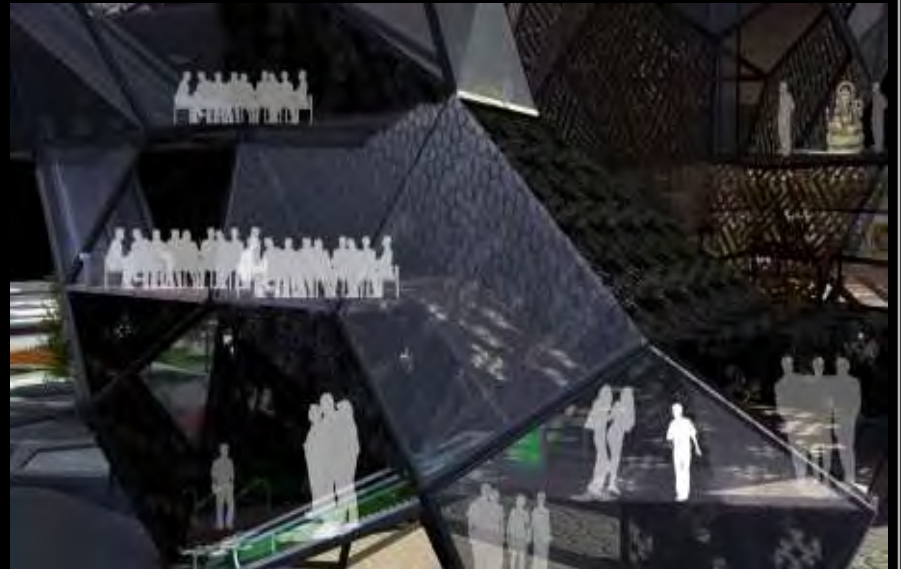


< PERSPECTIVE RENDERINGS

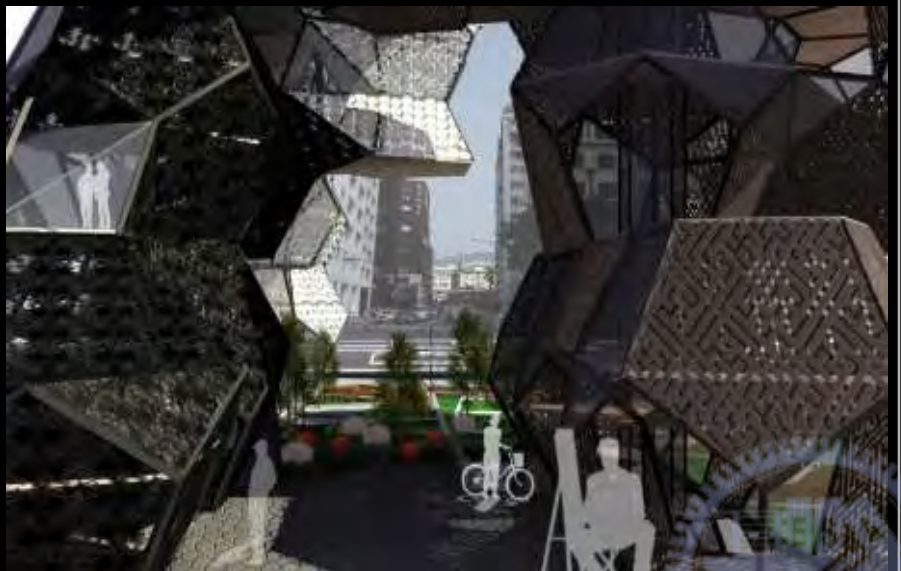
空间情境模拟



< INTERIOR



< EXTERIOR



< FORECOURT

< THE HYBRID MUSEUM

In the end, the whole building no matter from the composition by program, and configuration of spacial unit, to the circulation system even in the pattern in elevation, are created and formed by the system from the Five Elements.