

Appendix  
Proton-1 and Carbon-13 Nuclear Magnetic Resonance Spectra



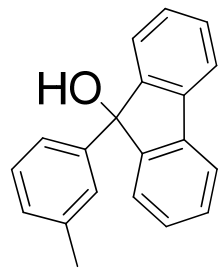
STANDARD 1H OBSERVE

7.12  
7.13  
7.13  
7.21  
7.21  
7.23  
7.23  
7.24  
7.25  
7.26  
7.30  
7.31  
7.32  
7.33  
7.33  
7.33  
7.35  
7.35  
7.64  
7.64  
7.64  
7.66  
7.66

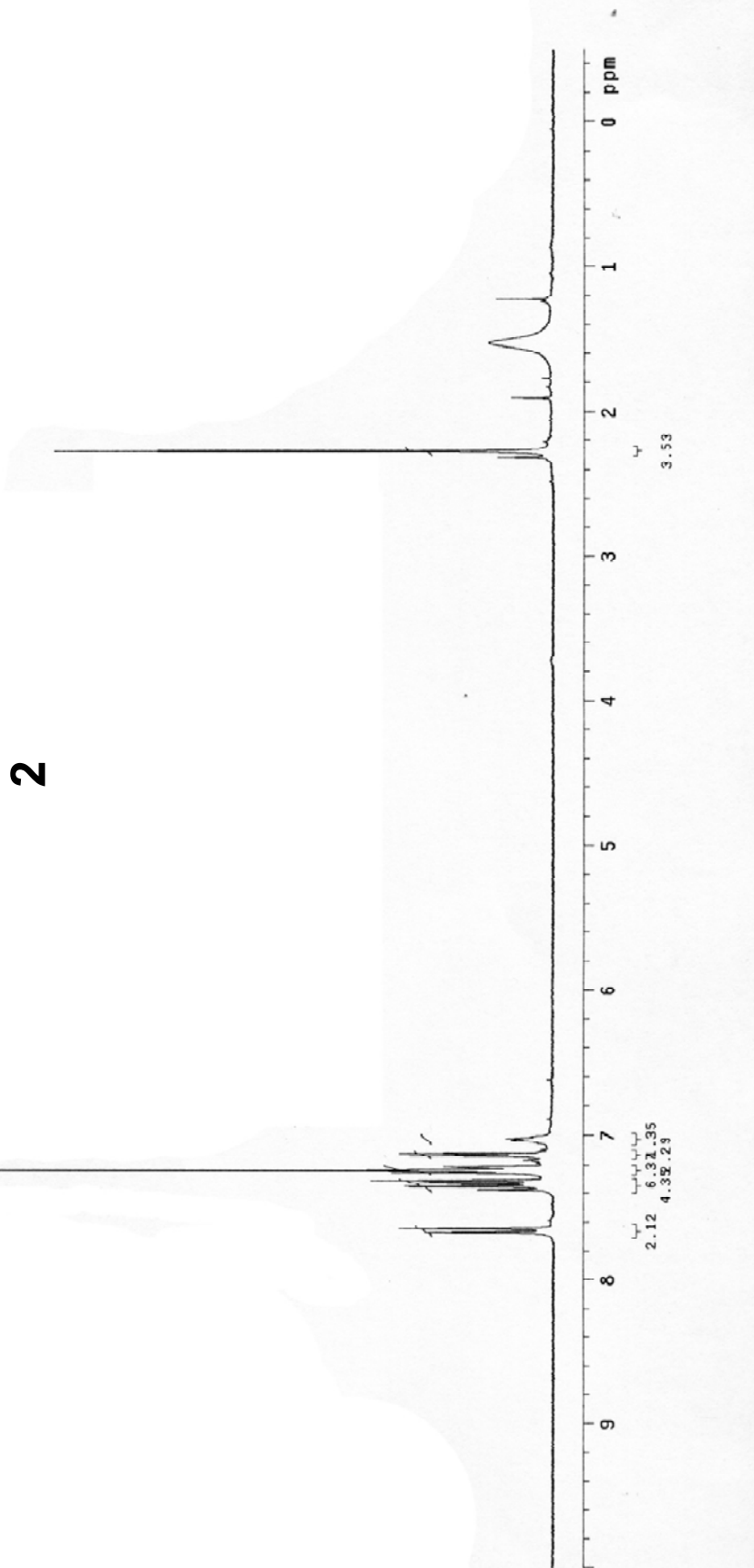
Pulse Sequence: s2pt1  
Solvent: CDCl3  
Ambient temperature  
UNITY-300 "unity-300"

Relax. delay 1.000 sec  
Pulse 48.0 degrees  
Acq. time 3.641 sec  
Width 8000.0 Hz  
32 repetitions

OBSERVE H1, 299.9468567 MHZ  
DATA PROCESSING  
Line broadening 0.2 Hz  
FT size 65536  
Total time 2 min, 28 sec



2.27



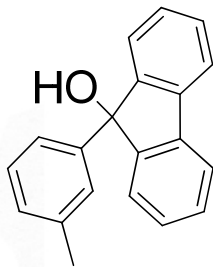
13C OBSERVE

Pulse Sequence: s2pul  
Solvent: CDCl3  
Ambient temperature  
UNITY-300 "unity-300"

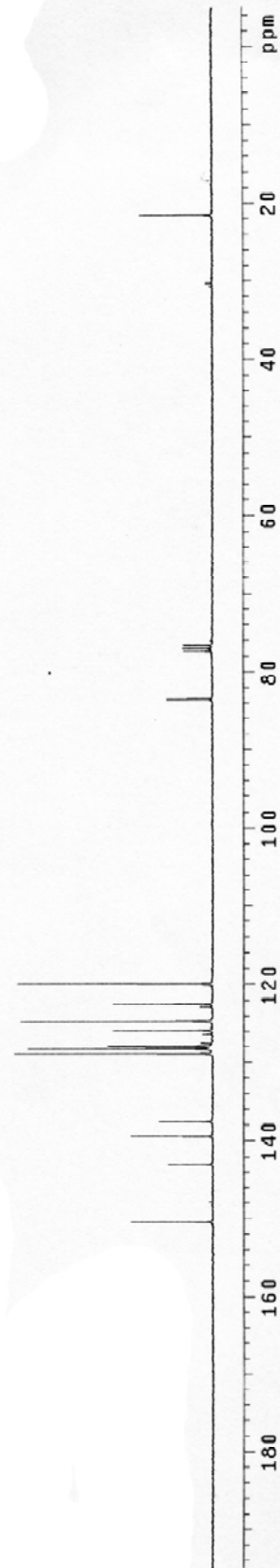
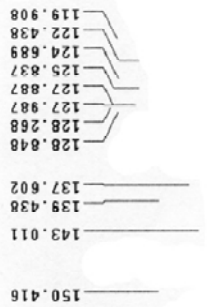
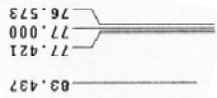
Relax. delay 4.000 sec  
Pulse 48.8 degrees  
Acq. time 1.515 sec  
Sweep 16501.7 Hz

68 repetitions  
OBSERVE C13, 75.4217143 MHZ  
DECOUPLE H1, 299.3473281 MHZ  
Power 39 db

continuously on  
WALTZ-16 modulated  
DATA PROCESSING  
Line broadening 1.0 Hz  
FT size 65536  
Total time 1 hr, 39 min, 25 sec



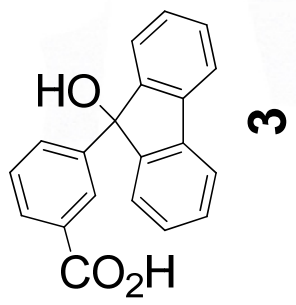
2



```

Current Data Parameters
NAME          SP1200061017
EXPNO         1
PROCNO        1
F2 - Acquisition Parameters
Date_         20060107
Time          16.03
INSTRUM       spect
PROBHD        5 mm MSL11P
PULPROG       zgpg30
AQ            0.3354
SOLVENT       acetone
NS            16
DS            0
SWH           4789.272 Hz
FIDRES       0.298214 Hz
AQ           1.7100306 sec
RG            327
WDW           EM
SSB           0
GB            0
PC            6.50 sec
TE            300.0 K
TE           2.0000000 sec
***** CHANNEL f1 *****
NUC1          13
P1            9.20 sec
RG1           -3.00 dB
FREQ1        300.135006 MHz
F2 - Processing parameters
SI            32768
AQ            300.135006 sec
RG            0
SSB           0
WDW           EM
GB            0
PC            6.50 sec
TE            300.0 K
TE           2.0000000 sec
***** CHANNEL f2 *****
NUC2          13
P2            9.20 sec
RG2           -3.00 dB
FREQ2        300.135006 MHz
F3 - Acquisition Parameters
Date_         20060107
Time          16.03
INSTRUM       spect
PROBHD        5 mm MSL11P
PULPROG       zgpg30
AQ            0.3354
SOLVENT       acetone
NS            16
DS            0
SWH           4789.272 Hz
FIDRES       0.298214 Hz
AQ           1.7100306 sec
RG            327
WDW           EM
SSB           0
GB            0
PC            6.50 sec
TE            300.0 K
TE           2.0000000 sec
***** CHANNEL f3 *****
NUC3          13
P3            9.20 sec
RG3           -3.00 dB
FREQ3        300.135006 MHz
F4 - Processing parameters
SI            32768
AQ            300.135006 sec
RG            0
SSB           0
WDW           EM
GB            0
PC            6.50 sec
TE            300.0 K
TE           2.0000000 sec
***** CHANNEL f4 *****
NUC4          13
P4            9.20 sec
RG4           -3.00 dB
FREQ4        300.135006 MHz
F5 - Acquisition Parameters
Date_         20060107
Time          16.03
INSTRUM       spect
PROBHD        5 mm MSL11P
PULPROG       zgpg30
AQ            0.3354
SOLVENT       acetone
NS            16
DS            0
SWH           4789.272 Hz
FIDRES       0.298214 Hz
AQ           1.7100306 sec
RG            327
WDW           EM
SSB           0
GB            0
PC            6.50 sec
TE            300.0 K
TE           2.0000000 sec
***** CHANNEL f5 *****
NUC5          13
P5            9.20 sec
RG5           -3.00 dB
FREQ5        300.135006 MHz
F6 - Processing parameters
SI            32768
AQ            300.135006 sec
RG            0
SSB           0
WDW           EM
GB            0
PC            6.50 sec
TE            300.0 K
TE           2.0000000 sec
***** CHANNEL f6 *****
NUC6          13
P6            9.20 sec
RG6           -3.00 dB
FREQ6        300.135006 MHz
F7 - Acquisition Parameters
Date_         20060107
Time          16.03
INSTRUM       spect
PROBHD        5 mm MSL11P
PULPROG       zgpg30
AQ            0.3354
SOLVENT       acetone
NS            16
DS            0
SWH           4789.272 Hz
FIDRES       0.298214 Hz
AQ           1.7100306 sec
RG            327
WDW           EM
SSB           0
GB            0
PC            6.50 sec
TE            300.0 K
TE           2.0000000 sec
***** CHANNEL f7 *****
NUC7          13
P7            9.20 sec
RG7           -3.00 dB
FREQ7        300.135006 MHz
F8 - Processing parameters
SI            32768
AQ            300.135006 sec
RG            0
SSB           0
WDW           EM
GB            0
PC            6.50 sec
TE            300.0 K
TE           2.0000000 sec
***** CHANNEL f8 *****
NUC8          13
P8            9.20 sec
RG8           -3.00 dB
FREQ8        300.135006 MHz
F9 - Acquisition Parameters
Date_         20060107
Time          16.03
INSTRUM       spect
PROBHD        5 mm MSL11P
PULPROG       zgpg30
AQ            0.3354
SOLVENT       acetone
NS            16
DS            0
SWH           4789.272 Hz
FIDRES       0.298214 Hz
AQ           1.7100306 sec
RG            327
WDW           EM
SSB           0
GB            0
PC            6.50 sec
TE            300.0 K
TE           2.0000000 sec
***** CHANNEL f9 *****
NUC9          13
P9            9.20 sec
RG9           -3.00 dB
FREQ9        300.135006 MHz
F10 - Processing parameters
SI            32768
AQ            300.135006 sec
RG            0
SSB           0
WDW           EM
GB            0
PC            6.50 sec
TE            300.0 K
TE           2.0000000 sec
***** CHANNEL f10 *****
NUC10         13
P10           9.20 sec
RG10          -3.00 dB
FREQ10       300.135006 MHz
F11 - Acquisition Parameters
Date_         20060107
Time          16.03
INSTRUM       spect
PROBHD        5 mm MSL11P
PULPROG       zgpg30
AQ            0.3354
SOLVENT       acetone
NS            16
DS            0
SWH           4789.272 Hz
FIDRES       0.298214 Hz
AQ           1.7100306 sec
RG            327
WDW           EM
SSB           0
GB            0
PC            6.50 sec
TE            300.0 K
TE           2.0000000 sec
***** CHANNEL f11 *****
NUC11         13
P11           9.20 sec
RG11          -3.00 dB
FREQ11       300.135006 MHz
F12 - Processing parameters
SI            32768
AQ            300.135006 sec
RG            0
SSB           0
WDW           EM
GB            0
PC            6.50 sec
TE            300.0 K
TE           2.0000000 sec
***** CHANNEL f12 *****
NUC12         13
P12           9.20 sec
RG12          -3.00 dB
FREQ12       300.135006 MHz
F13 - Acquisition Parameters
Date_         20060107
Time          16.03
INSTRUM       spect
PROBHD        5 mm MSL11P
PULPROG       zgpg30
AQ            0.3354
SOLVENT       acetone
NS            16
DS            0
SWH           4789.272 Hz
FIDRES       0.298214 Hz
AQ           1.7100306 sec
RG            327
WDW           EM
SSB           0
GB            0
PC            6.50 sec
TE            300.0 K
TE           2.0000000 sec
***** CHANNEL f13 *****
NUC13         13
P13           9.20 sec
RG13          -3.00 dB
FREQ13       300.135006 MHz
F14 - Processing parameters
SI            32768
AQ            300.135006 sec
RG            0
SSB           0
WDW           EM
GB            0
PC            6.50 sec
TE            300.0 K
TE           2.0000000 sec
***** CHANNEL f14 *****
NUC14         13
P14           9.20 sec
RG14          -3.00 dB
FREQ14       300.135006 MHz
F15 - Acquisition Parameters
Date_         20060107
Time          16.03
INSTRUM       spect
PROBHD        5 mm MSL11P
PULPROG       zgpg30
AQ            0.3354
SOLVENT       acetone
NS            16
DS            0
SWH           4789.272 Hz
FIDRES       0.298214 Hz
AQ           1.7100306 sec
RG            327
WDW           EM
SSB           0
GB            0
PC            6.50 sec
TE            300.0 K
TE           2.0000000 sec
***** CHANNEL f15 *****
NUC15         13
P15           9.20 sec
RG15          -3.00 dB
FREQ15       300.135006 MHz
F16 - Processing parameters
SI            32768
AQ            300.135006 sec
RG            0
SSB           0
WDW           EM
GB            0
PC            6.50 sec
TE            300.0 K
TE           2.0000000 sec
***** CHANNEL f16 *****
NUC16         13
P16           9.20 sec
RG16          -3.00 dB
FREQ16       300.135006 MHz
F17 - Acquisition Parameters
Date_         20060107
Time          16.03
INSTRUM       spect
PROBHD        5 mm MSL11P
PULPROG       zgpg30
AQ            0.3354
SOLVENT       acetone
NS            16
DS            0
SWH           4789.272 Hz
FIDRES       0.298214 Hz
AQ           1.7100306 sec
RG            327
WDW           EM
SSB           0
GB            0
PC            6.50 sec
TE            300.0 K
TE           2.0000000 sec
***** CHANNEL f17 *****
NUC17         13
P17           9.20 sec
RG17          -3.00 dB
FREQ17       300.135006 MHz
F18 - Processing parameters
SI            32768
AQ            300.135006 sec
RG            0
SSB           0
WDW           EM
GB            0
PC            6.50 sec
TE            300.0 K
TE           2.0000000 sec
***** CHANNEL f18 *****
NUC18         13
P18           9.20 sec
RG18          -3.00 dB
FREQ18       300.135006 MHz
F19 - Acquisition Parameters
Date_         20060107
Time          16.03
INSTRUM       spect
PROBHD        5 mm MSL11P
PULPROG       zgpg30
AQ            0.3354
SOLVENT       acetone
NS            16
DS            0
SWH           4789.272 Hz
FIDRES       0.298214 Hz
AQ           1.7100306 sec
RG            327
WDW           EM
SSB           0
GB            0
PC            6.50 sec
TE            300.0 K
TE           2.0000000 sec
***** CHANNEL f19 *****
NUC19         13
P19           9.20 sec
RG19          -3.00 dB
FREQ19       300.135006 MHz
F20 - Processing parameters
SI            32768
AQ            300.135006 sec
RG            0
SSB           0
WDW           EM
GB            0
PC            6.50 sec
TE            300.0 K
TE           2.0000000 sec
***** CHANNEL f20 *****
NUC20         13
P20           9.20 sec
RG20          -3.00 dB
FREQ20       300.135006 MHz

```

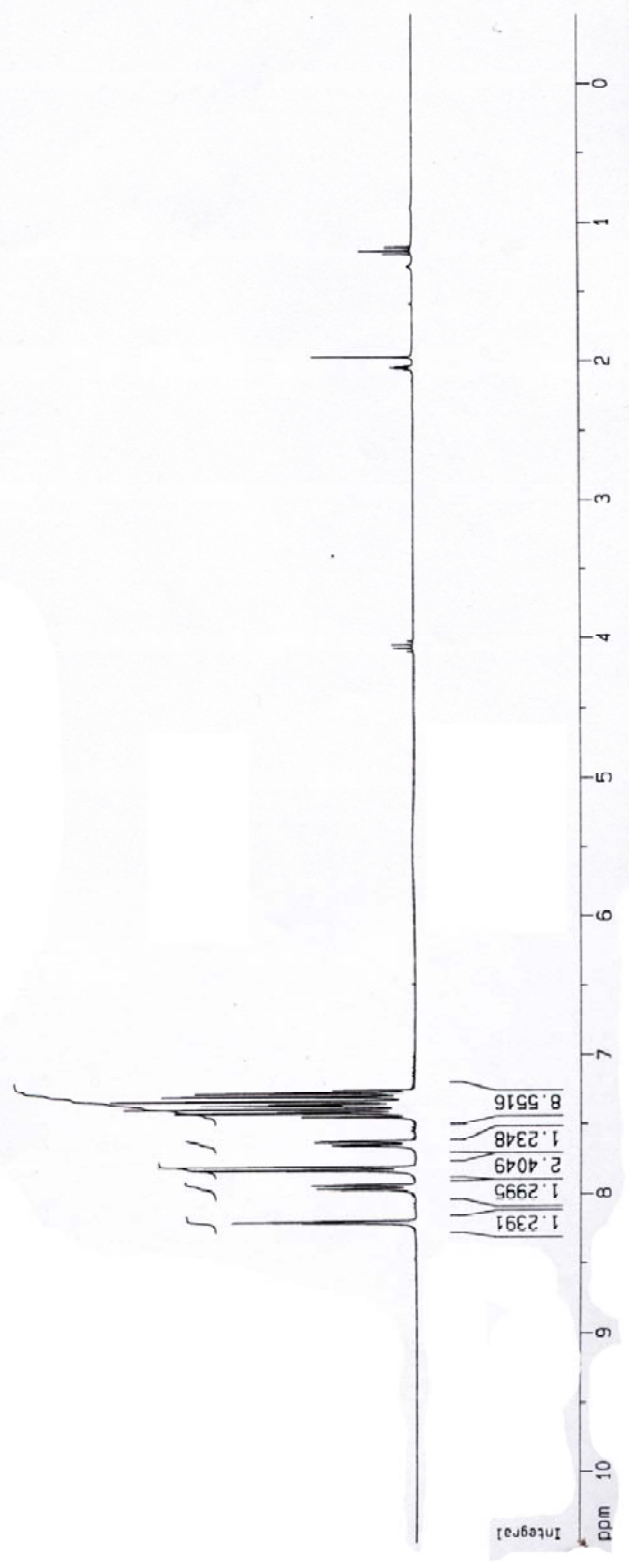


H1

8.19886  
8.19357  
7.82868  
7.82623  
7.82285  
7.80394  
7.80109  
7.41503  
7.39073  
7.38600  
7.36593  
7.36111  
7.33164  
7.32909  
7.32704  
7.29765  
7.29388  
7.27339  
7.26989

1.96832

DDM



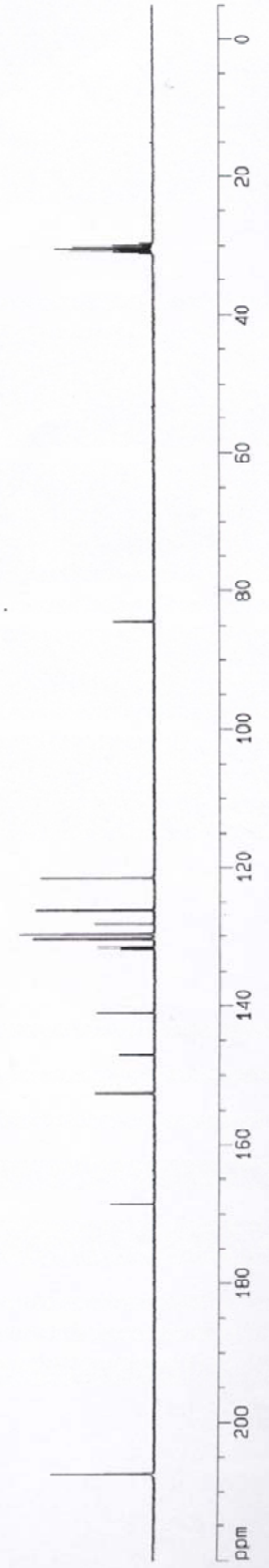
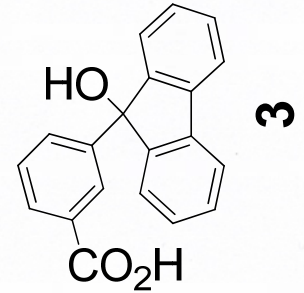


Current Data Parameters  
NAME: PHN0001017  
PROB: 1  
F1 - Acquisition Parameters  
Date\_: 20081017  
Time: 16.36  
INSTRUM: spect  
PROBHD: 5 mm HX135N  
PULPROG: zgpg30  
SFO: 500.132486 MHz  
AQ: 0.655400  
RG: 256  
SD: 10.17  
WDW: EM  
SSB: 0  
GB: 0  
PC: 1.00  
F2 - Processing parameters  
SI: 131072  
SF: 500.132486 MHz  
WDW: EM  
SSB: 0  
GB: 0  
PC: 1.00  
F3 - 1D NMR list parameters  
SI: 131072  
SF: 500.132486 MHz  
WDW: EM  
SSB: 0  
GB: 0  
PC: 1.00  
NAME: PHN0001017  
PROB: 1  
F1 - Acquisition Parameters  
Date\_: 20081017  
Time: 16.36  
INSTRUM: spect  
PROBHD: 5 mm HX135N  
PULPROG: zgpg30  
SFO: 500.132486 MHz  
AQ: 0.655400  
RG: 256  
SD: 10.17  
WDW: EM  
SSB: 0  
GB: 0  
PC: 1.00  
F2 - Processing parameters  
SI: 131072  
SF: 500.132486 MHz  
WDW: EM  
SSB: 0  
GB: 0  
PC: 1.00  
F3 - 1D NMR list parameters  
SI: 131072  
SF: 500.132486 MHz  
WDW: EM  
SSB: 0  
GB: 0  
PC: 1.00  
NAME: PHN0001017  
PROB: 1  
F1 - Acquisition Parameters  
Date\_: 20081017  
Time: 16.36  
INSTRUM: spect  
PROBHD: 5 mm HX135N  
PULPROG: zgpg30  
SFO: 500.132486 MHz  
AQ: 0.655400  
RG: 256  
SD: 10.17  
WDW: EM  
SSB: 0  
GB: 0  
PC: 1.00  
F2 - Processing parameters  
SI: 131072  
SF: 500.132486 MHz  
WDW: EM  
SSB: 0  
GB: 0  
PC: 1.00  
F3 - 1D NMR list parameters  
SI: 131072  
SF: 500.132486 MHz  
WDW: EM  
SSB: 0  
GB: 0  
PC: 1.00

30.236  
30.493  
30.750

84.396

121.538  
126.149  
129.706  
129.734  
130.315  
131.571  
141.150  
147.049  
152.513  
168.484  
207.441

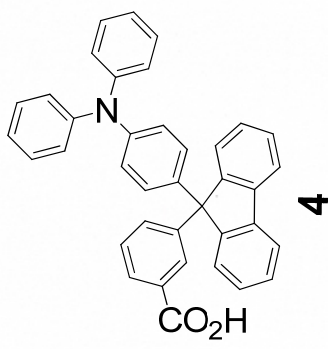


```

Current Data Parameters
NAME: SH0001102
EXPNO: 1
PROCNO: 1
F2 - Acquisition Parameters
Date_: 20051102
Time: 14.34
INSTRUM: zgpg30
PROBHD: 5 mm MSL101
PULPROG: zgpg30
TD: 65536
SOLVENT: acetone
NS: 16
DS: 4
SWH: 4780.272 Hz
FIDRES: 0.262314 Hz
AQ: 1.7325396 sec
RG: 512
DM: 104.400 urec
DE: 0.20 urec
TE: 300.2 K
D1: 2.0000000 sec
***** CHANNEL f1 *****
NUC1: 1H
P1: 9.70 urec
PL1: -3.00 dB
SFO1: 300.1375000 MHz
F2 - Processing parameters
SI: 65536
SF: 300.1300000 MHz
WDW: EM
SSB: 0
LB: 0.1 Hz
GB: 0
PC: 1.00
ID: MMS
ID0: parameters
CA: 23.00 cm
CP: 0.0000000
F1: 3151.37 MHz
FPP: -1.500 308
F2: -150.85 Hz
PPOH: 5.47925 308/CM
PCOH: 143.58044 87/CM

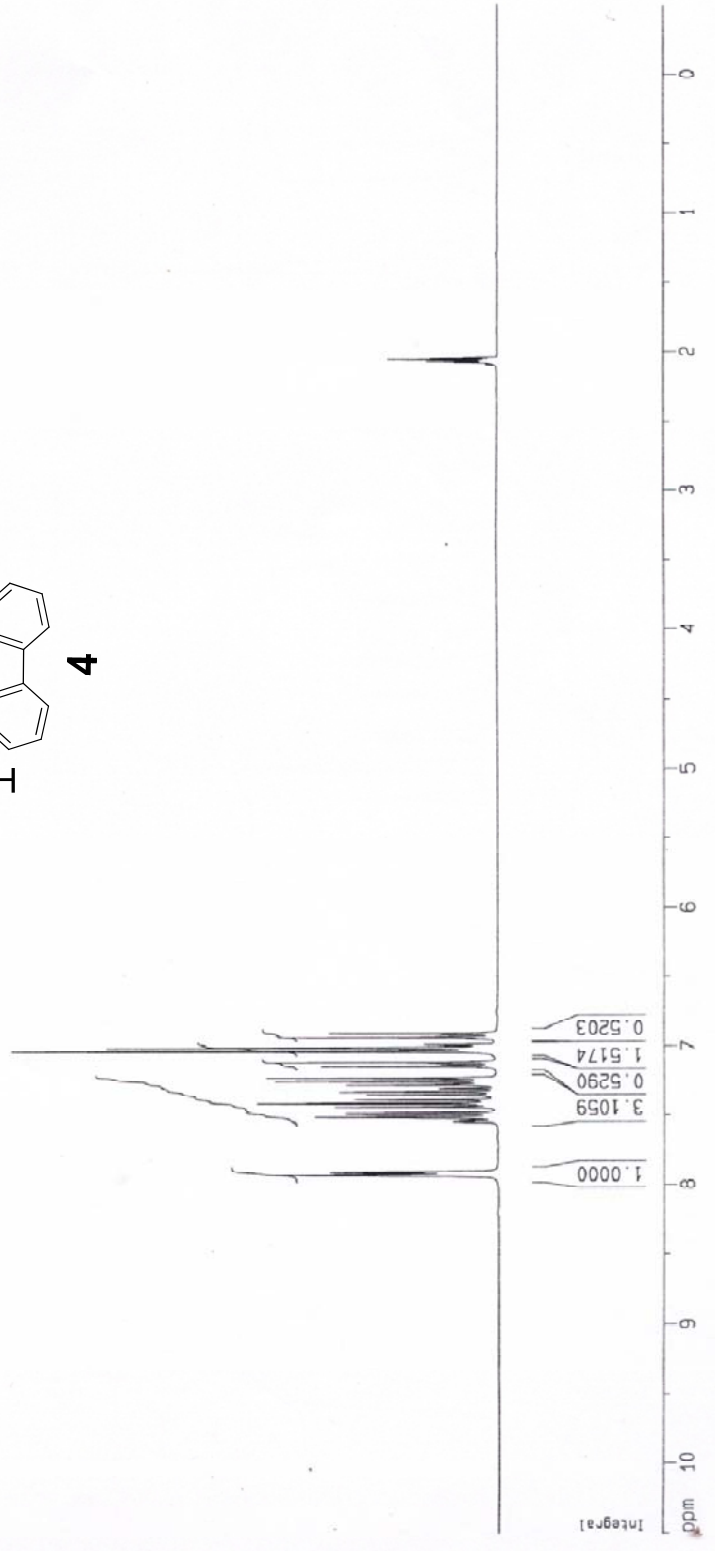
```

2.07828  
2.07091  
2.06361  
2.05621  
2.04896



7.93482  
7.93263  
7.92618  
7.91284  
7.90894  
7.51728  
7.4575  
7.42007  
7.3843  
7.25812  
7.25427  
7.23118  
7.14665  
7.11735  
7.04026  
7.01718  
7.01320  
7.00954  
6.94365  
6.91424

ppm



Current Data Parameters  
 NAME: 2008081512  
 PROBD: 2

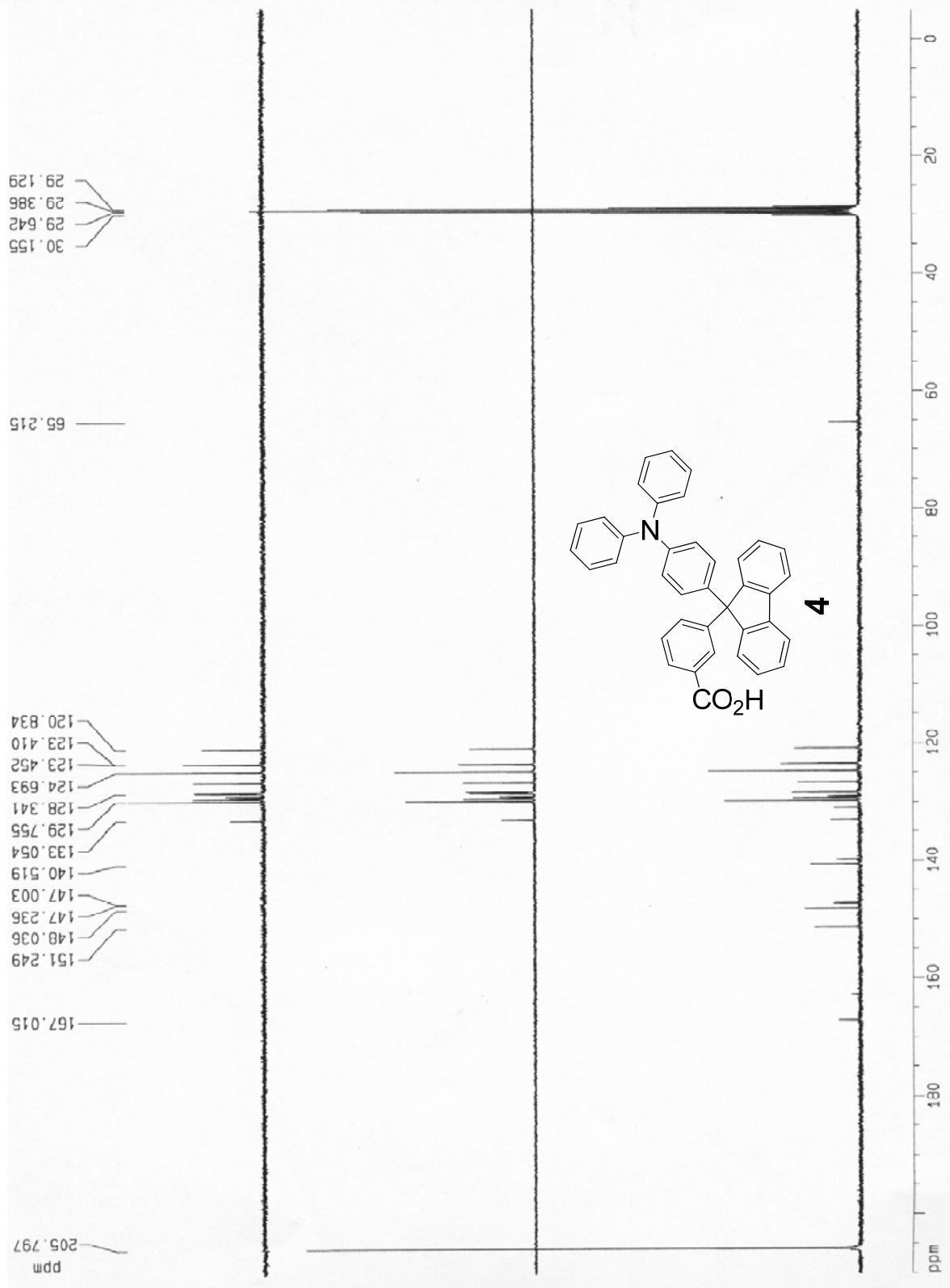
PS - Acquisition Parameters  
 DATE\_: 08/08/12  
 TIME: 14.37  
 PROBD: 5 m NUT11VU  
 PULPROG: zgpg30  
 SOLVENT: CDCl3  
 NS: 1024  
 DS: 4  
 SWH: 10032.376 Hz  
 AQ: 0.20000000 sec  
 RG: 1  
 FIDRES: 0.01000000 Hz  
 CN: 20.50000000  
 WE: 300.00000000 Hz  
 C1: 1.5000000000 Hz  
 C12: 0.0000000000 Hz

===== CHANNEL f1 =====  
 NUC1: 13C  
 P1: 9.00000000 sec  
 PL1: 0.00000000 dB  
 SFO1: 75.48310000 MHz

===== CHANNEL f2 =====  
 CPDPRG2: zgpg30  
 NUC2: 1H  
 P2: 9.00000000 sec  
 PL2: 0.00000000 dB  
 PL12: 17.00000000 dB  
 PL13: 20.00000000 dB  
 SFO2: 300.135000000 MHz

F2 - Processing parameters  
 SI: 75.48310000 MHz  
 SF: 300.135000000 MHz  
 WBW: 300.00000000 MHz  
 LBW: 1.00000000 Hz  
 GB: 0  
 PC: 1.00

SI NMR F101 parameters  
 SI: 75.48310000 MHz  
 SF: 300.135000000 MHz  
 F1P: 20.00000000 MHz  
 F1: 15848.32000000 Hz  
 F2P: 500.135000000 MHz  
 F2: 157.730000000 MHz  
 FREQ0: 9.1485000000 sec  
 AQC0: 0.0000000000 sec



Current Data Parameters  
 Name: jh000507  
 ExpNO: 2  
 PROCNO: 1

F2 - Acquisition Parameters  
 Date\_: 20051006  
 Time: 17.31  
 INSTRUM: spect  
 PROCNO: 1  
 PULPROG: zgpg30  
 TD: 4200  
 SOLVENT: CDCl3  
 NS: 16  
 DS: 4  
 SWH: 4789.272 Hz  
 FIDRES: 0.282314 Hz  
 AQ: 1.7195366 sec  
 RG: 57  
 DM: 101.400 uS  
 DE: 1.000 uS  
 TE: 300.0 uS  
 D1: 2.0000000 sec

\*\*\*\*\* CHANNEL f1 \*\*\*\*\*  
 NUC1: 13  
 P1: 9.00 uS  
 PL1: -1.50 dB  
 SFO1: 390.1329908 MHz

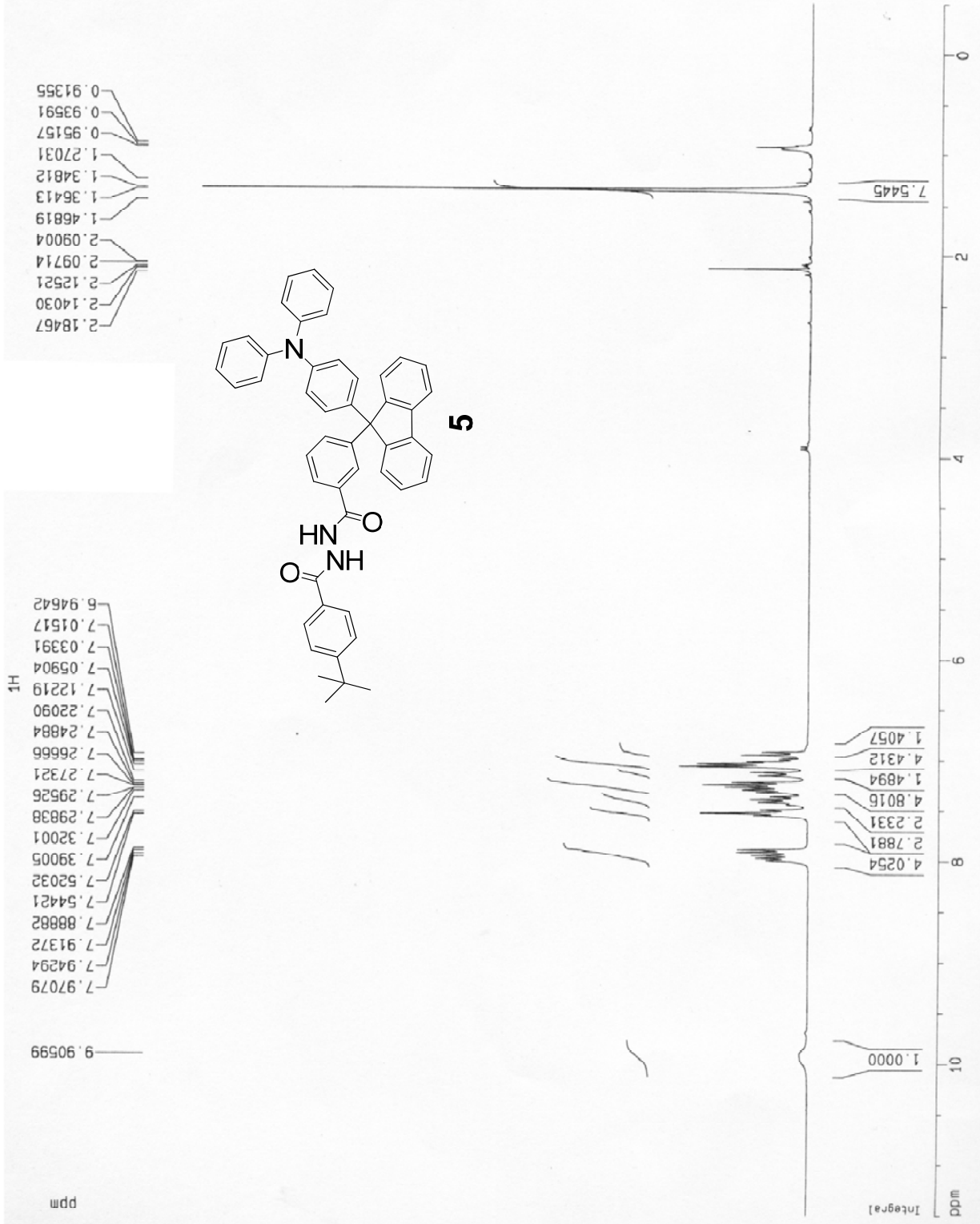
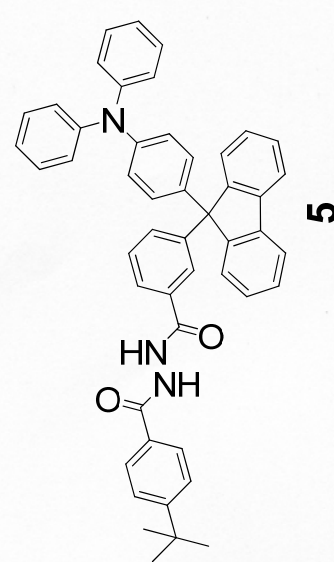
F2 - Processing parameters  
 SI: 32768  
 SF: 390.1329908 MHz  
 Ww: 10000.000 Hz  
 SSB: 0  
 LB: 0.10 Hz  
 GB: 0  
 PC: 1.00

1D NMR D1: Parameters  
 C1: 23.00 cm  
 F1p: 11.500 ppm  
 F1: 3425.50 Hz  
 F2p: -8.500 ppm  
 F2: 3297.50 Hz  
 PRGCM: 0.0217 Hz/cm  
 HOOK: 156.8957 Hz/cm

2.18467  
 2.14030  
 2.12521  
 2.09714  
 2.09004  
 1.46819  
 1.36413  
 1.34812  
 1.27031  
 0.95157  
 0.93591  
 0.91355

9.90599  
 7.97079  
 7.94294  
 7.91372  
 7.88882  
 7.54421  
 7.52032  
 7.39005  
 7.32001  
 7.29838  
 7.29526  
 7.27321  
 7.26666  
 7.24884  
 7.22090  
 7.12219  
 7.05904  
 7.03391  
 7.01517  
 6.94642

HT



Current Data Parameters  
NAME: H40500107  
EXPNO: 1  
PROCNO: 1

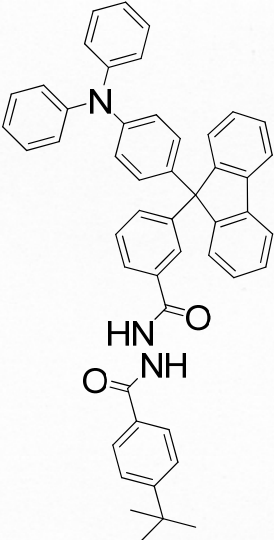
2 - Acquisition Parameters  
Date\_UTC: 20080520  
Time: 18.18  
INSTRUM: spect  
PROBHD: 5 mm  
PULPROG: zgpg30  
SFO1: 400.130506 MHz  
AQ: 0.10000000  
RG: 327.500  
AQ1: 0.10000000  
RG1: 327.500  
SFO2: 100.613000 MHz  
SFO3: 100.613000 MHz  
SFO4: 100.613000 MHz  
SFO5: 100.613000 MHz  
SFO6: 100.613000 MHz  
SFO7: 100.613000 MHz  
SFO8: 100.613000 MHz  
SFO9: 100.613000 MHz  
SFO10: 100.613000 MHz  
SFO11: 100.613000 MHz  
SFO12: 100.613000 MHz  
SFO13: 100.613000 MHz  
SFO14: 100.613000 MHz  
SFO15: 100.613000 MHz  
SFO16: 100.613000 MHz  
SFO17: 100.613000 MHz  
SFO18: 100.613000 MHz  
SFO19: 100.613000 MHz  
SFO20: 100.613000 MHz

===== CHANNEL f1 =====  
NUC1: 13C  
P1: 8.00 uSec  
PL1: 1.00 dB  
SFO1: 75.473370 MHz

===== CHANNEL f2 =====  
NUC2: 1H  
P2: 12.00 uSec  
PL2: 1.00 dB  
SFO2: 400.130506 MHz  
SFO3: 100.613000 MHz  
SFO4: 100.613000 MHz  
SFO5: 100.613000 MHz  
SFO6: 100.613000 MHz  
SFO7: 100.613000 MHz  
SFO8: 100.613000 MHz  
SFO9: 100.613000 MHz  
SFO10: 100.613000 MHz  
SFO11: 100.613000 MHz  
SFO12: 100.613000 MHz  
SFO13: 100.613000 MHz  
SFO14: 100.613000 MHz  
SFO15: 100.613000 MHz  
SFO16: 100.613000 MHz  
SFO17: 100.613000 MHz  
SFO18: 100.613000 MHz  
SFO19: 100.613000 MHz  
SFO20: 100.613000 MHz

1D and 2D Parameters  
CH: 27.26 cm  
SI: 327.500 MHz  
F1: 400.130506 MHz  
F2: 100.613000 MHz  
F3: 100.613000 MHz  
F4: 100.613000 MHz  
F5: 100.613000 MHz  
F6: 100.613000 MHz  
F7: 100.613000 MHz  
F8: 100.613000 MHz  
F9: 100.613000 MHz  
F10: 100.613000 MHz  
F11: 100.613000 MHz  
F12: 100.613000 MHz  
F13: 100.613000 MHz  
F14: 100.613000 MHz  
F15: 100.613000 MHz  
F16: 100.613000 MHz  
F17: 100.613000 MHz  
F18: 100.613000 MHz  
F19: 100.613000 MHz  
F20: 100.613000 MHz  
PC: 1.00

===== Processing parameters =====  
SI: 327.500 MHz  
WDW: EM  
SSB: 0  
LB: 1.0 Hz  
GB: 0  
PC: 1.00



**5**

C13

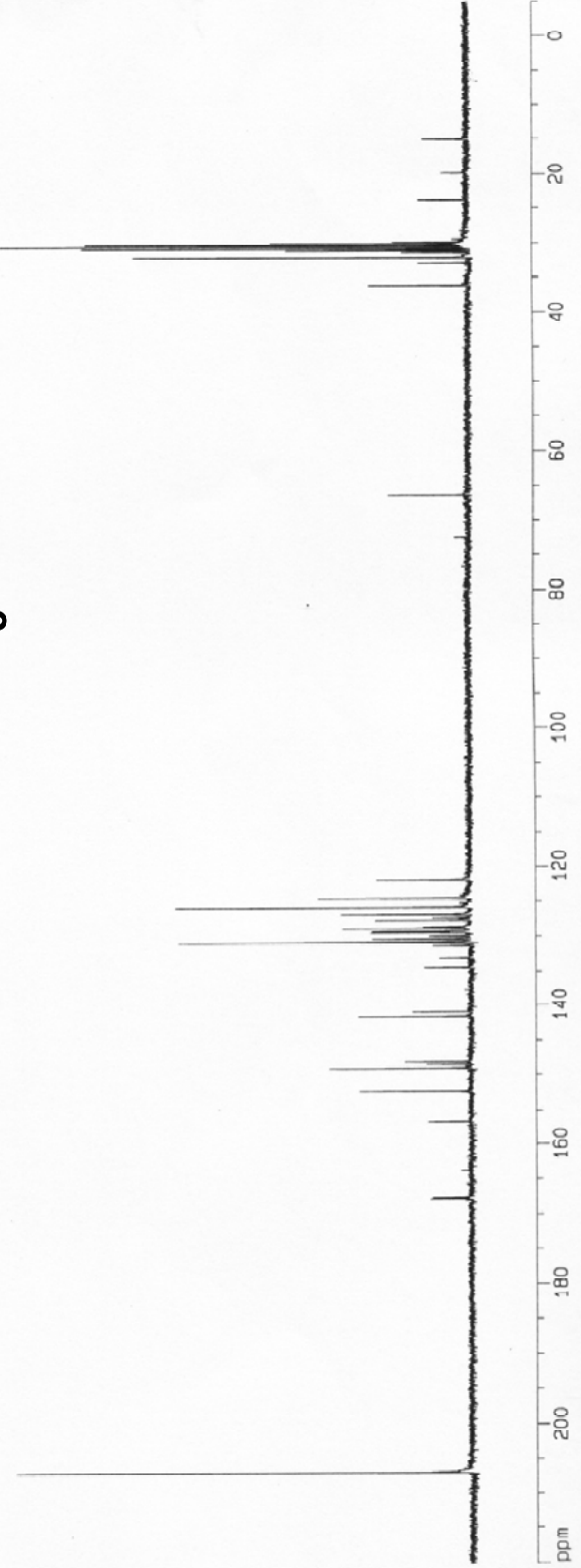
- 15.098
- 23.943
- 30.336
- 30.592
- 30.849
- 32.115
- 36.112

- 66.408

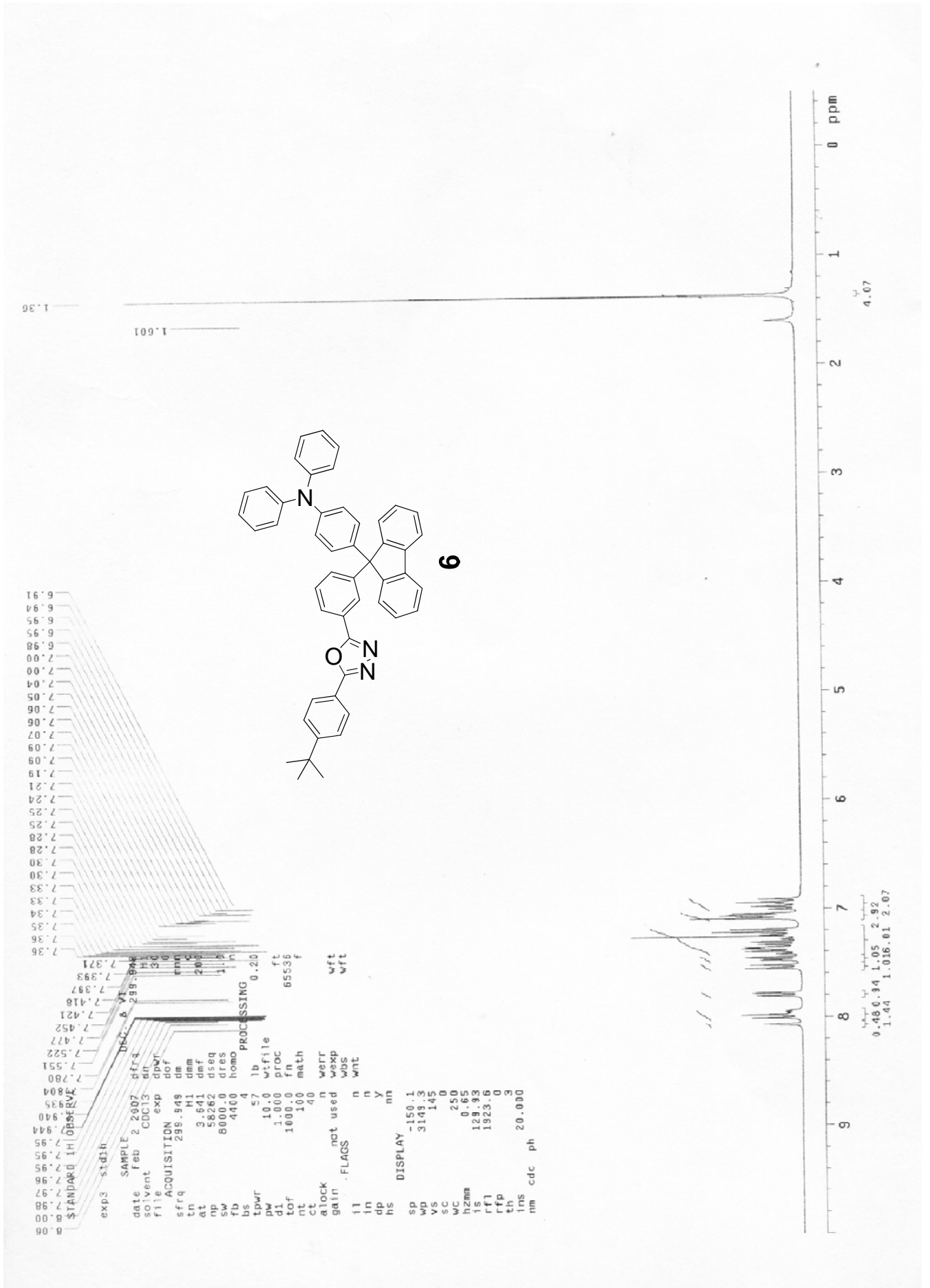
- 121.903
- 124.543
- 125.805
- 126.837
- 128.900
- 130.876
- 140.908
- 141.597
- 148.007
- 149.098
- 152.325
- 156.580
- 167.572
- 167.724

- 207.018

DDM

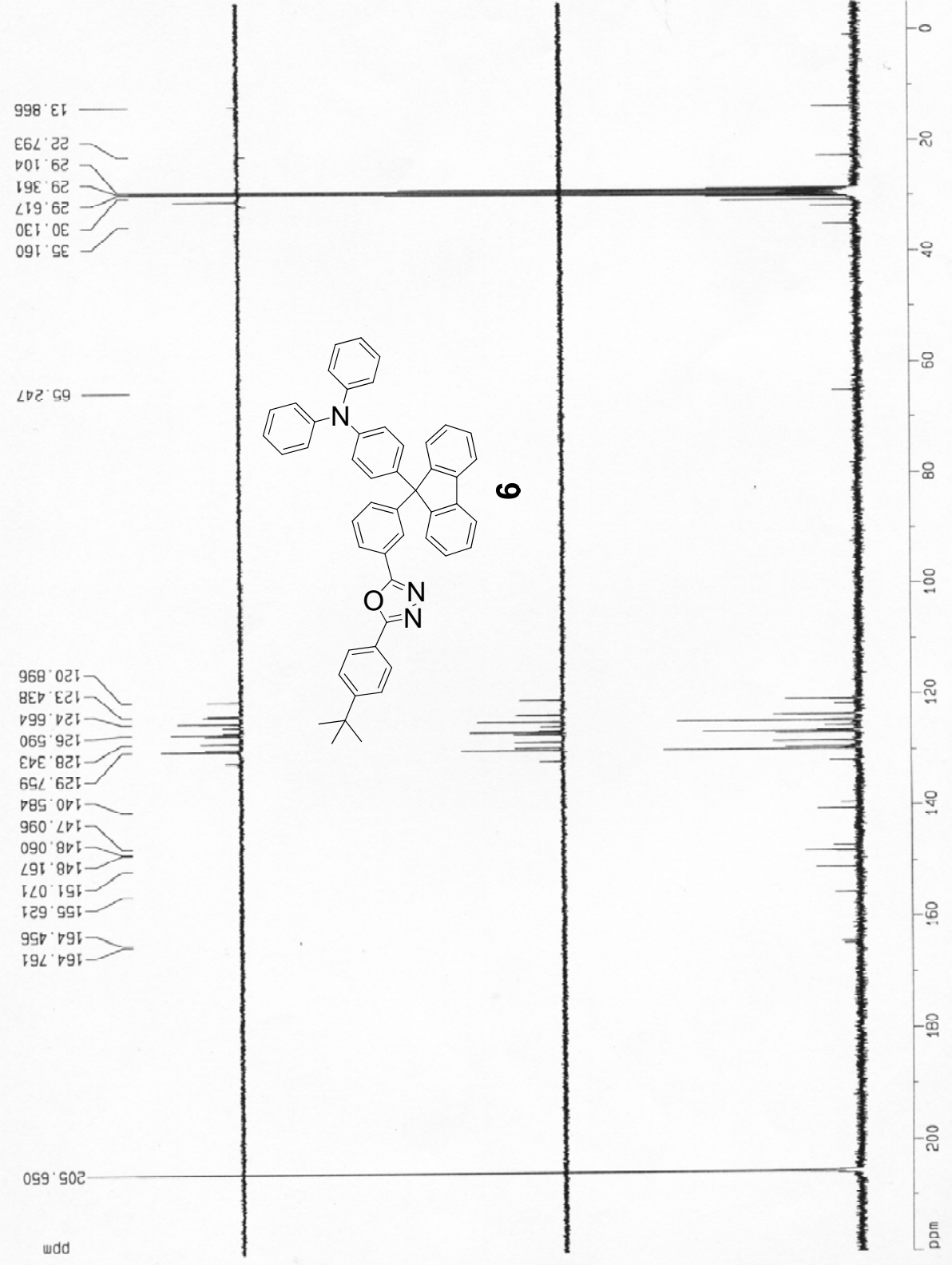


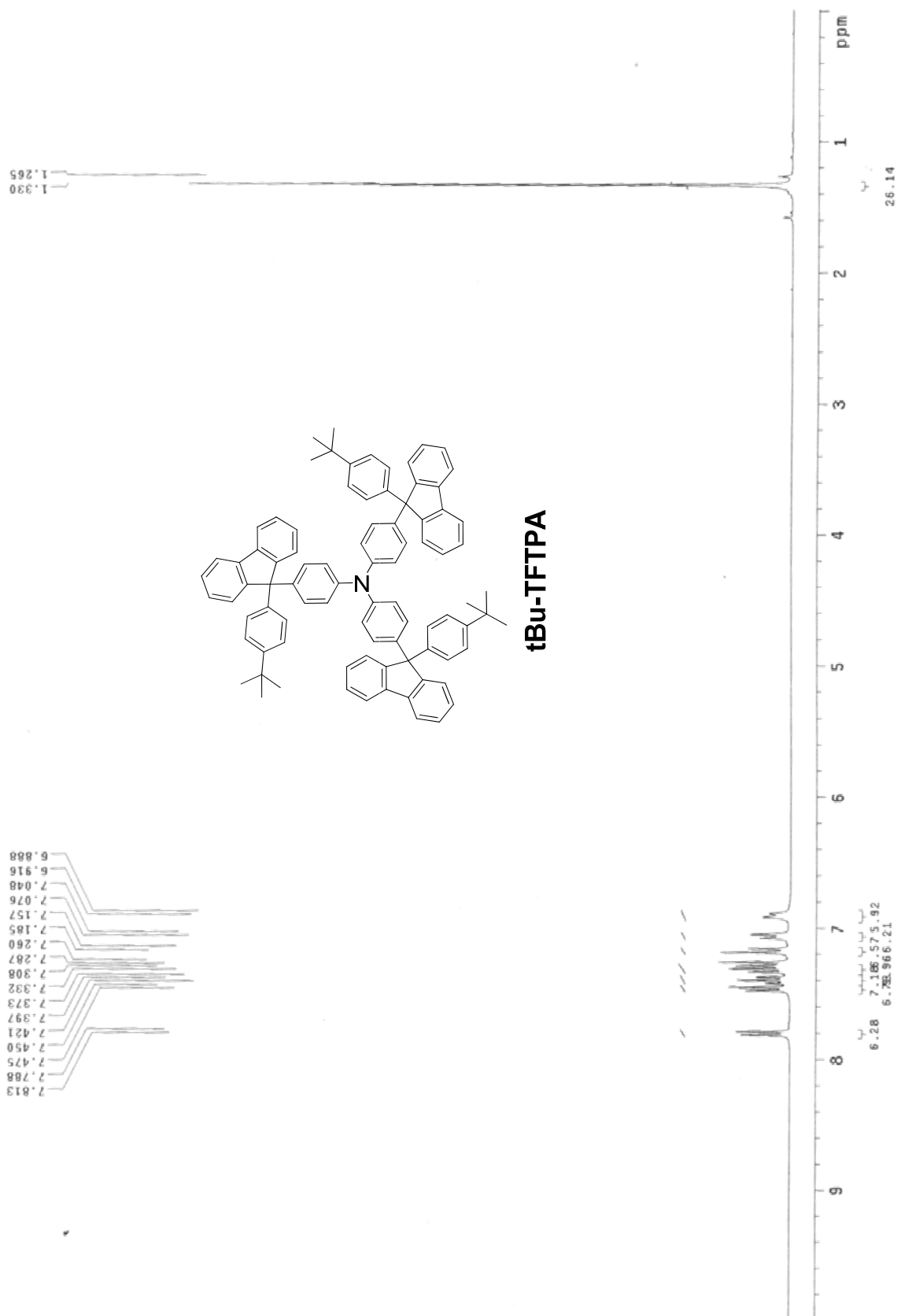




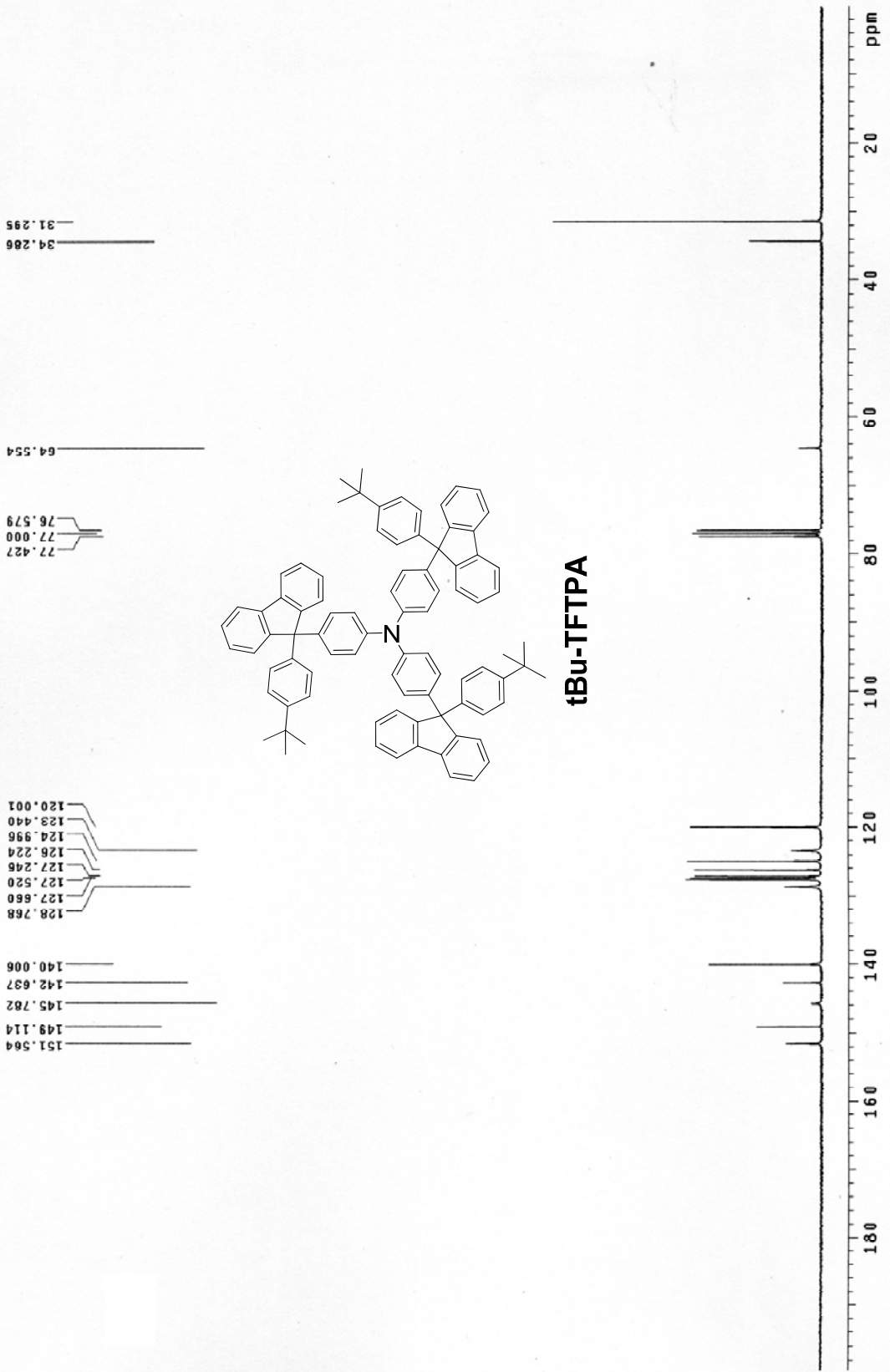
Current: 0.016, ReversalRate: 1  
 name: 4420051205 #  
 cfm: #0000  
 FT - Acquisition Parameters  
 Date\_Time: 2008-07-29 18:30  
 Instrument: spect  
 Method: 1  
 Name: 4420051205  
 File: 4420051205  
 1: 1  
 2: 1  
 3: 1  
 4: 1  
 5: 1  
 6: 1  
 7: 1  
 8: 1  
 9: 1  
 10: 1  
 11: 1  
 12: 1  
 13: 1  
 14: 1  
 15: 1  
 16: 1  
 17: 1  
 18: 1  
 19: 1  
 20: 1  
 21: 1  
 22: 1  
 23: 1  
 24: 1  
 25: 1  
 26: 1  
 27: 1  
 28: 1  
 29: 1  
 30: 1  
 31: 1  
 32: 1  
 33: 1  
 34: 1  
 35: 1  
 36: 1  
 37: 1  
 38: 1  
 39: 1  
 40: 1  
 41: 1  
 42: 1  
 43: 1  
 44: 1  
 45: 1  
 46: 1  
 47: 1  
 48: 1  
 49: 1  
 50: 1  
 51: 1  
 52: 1  
 53: 1  
 54: 1  
 55: 1  
 56: 1  
 57: 1  
 58: 1  
 59: 1  
 60: 1  
 61: 1  
 62: 1  
 63: 1  
 64: 1  
 65: 1  
 66: 1  
 67: 1  
 68: 1  
 69: 1  
 70: 1  
 71: 1  
 72: 1  
 73: 1  
 74: 1  
 75: 1  
 76: 1  
 77: 1  
 78: 1  
 79: 1  
 80: 1  
 81: 1  
 82: 1  
 83: 1  
 84: 1  
 85: 1  
 86: 1  
 87: 1  
 88: 1  
 89: 1  
 90: 1  
 91: 1  
 92: 1  
 93: 1  
 94: 1  
 95: 1  
 96: 1  
 97: 1  
 98: 1  
 99: 1  
 100: 1

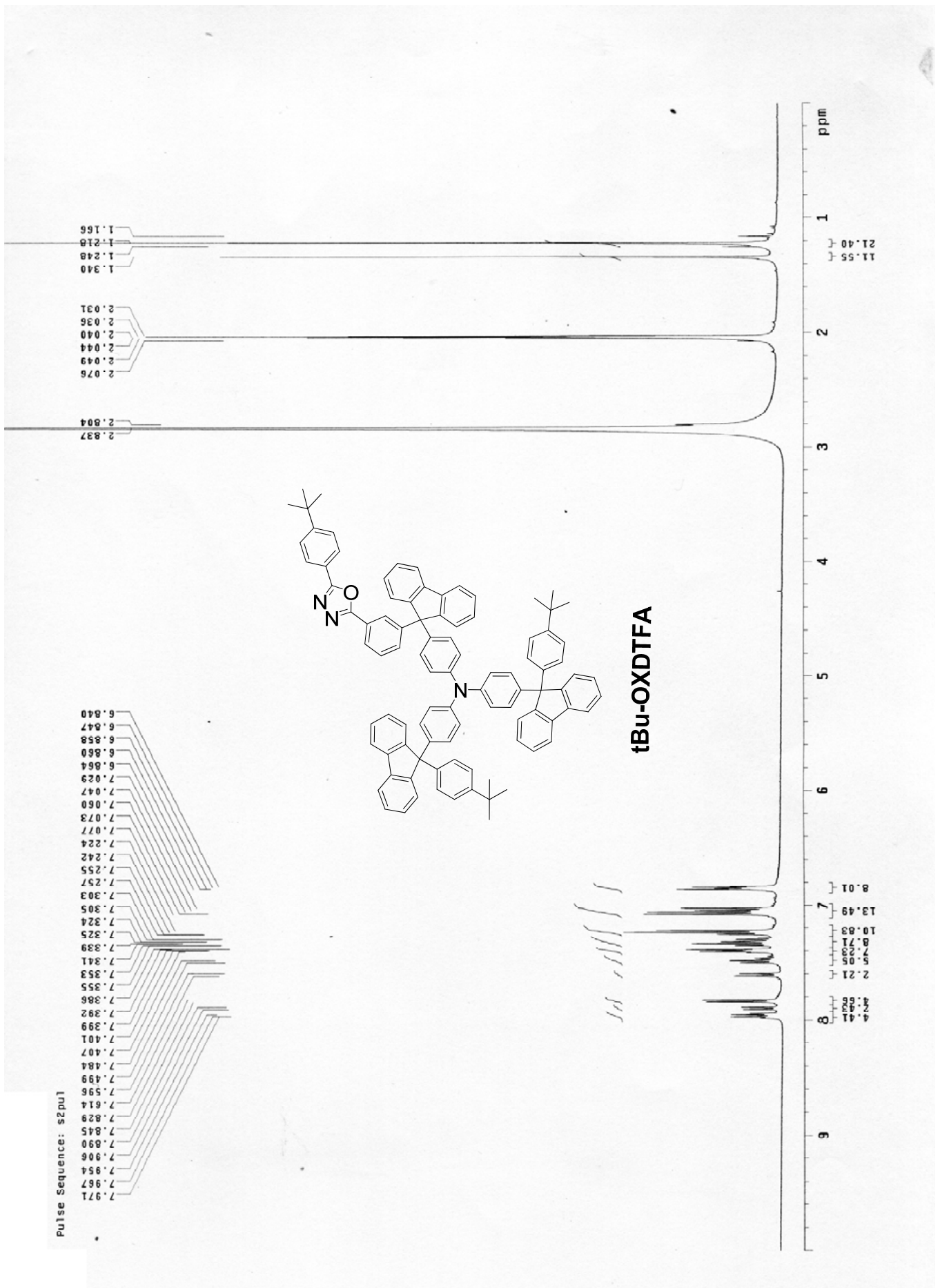
C13











Blue/D-Acetone  
966616.c

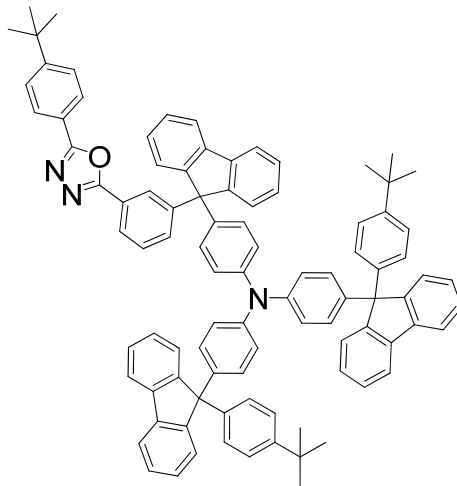
Pulse Sequence: s2pu1

205.406  
205.246  
205.086

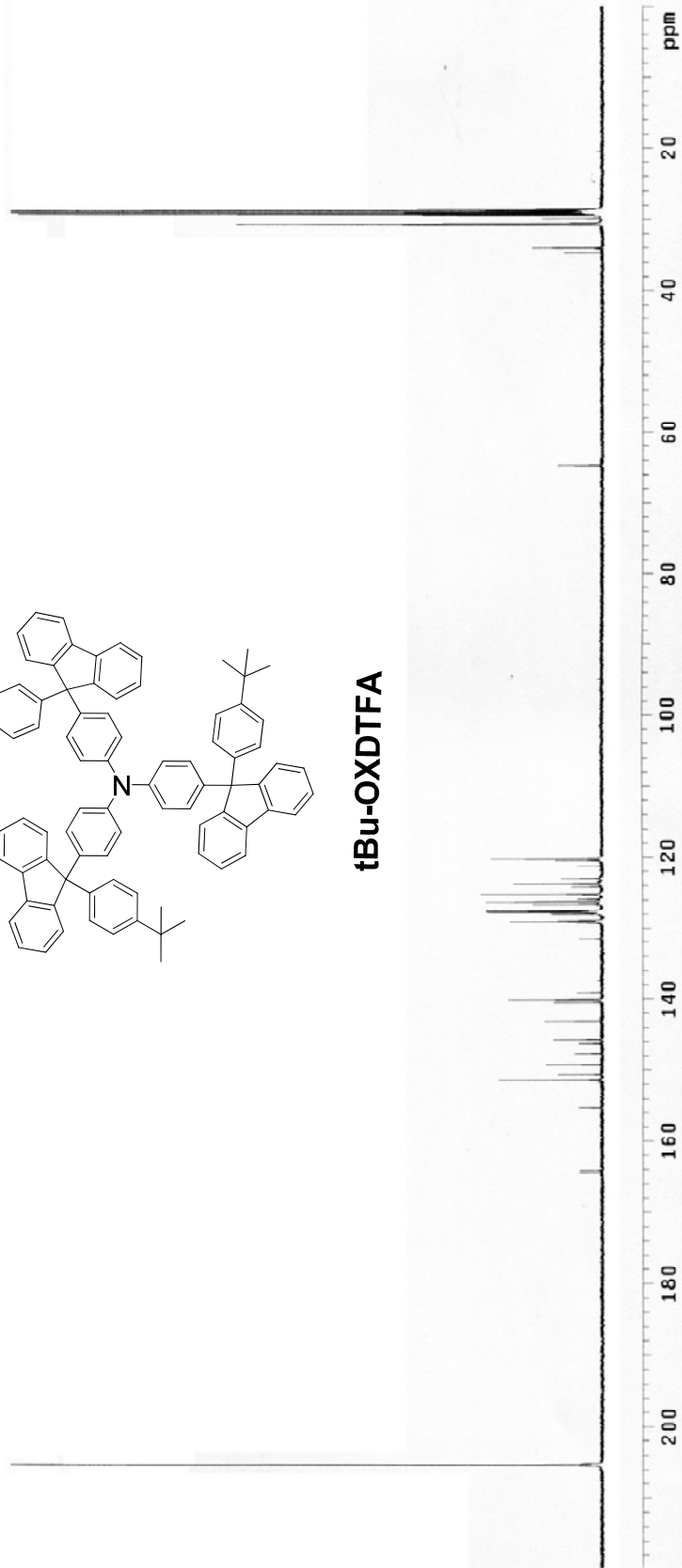
164.399  
164.093  
155.200  
151.384  
150.628  
149.162  
147.681  
146.223  
145.742  
143.010  
140.414  
140.124  
140.040  
138.994  
131.475  
129.376  
128.987  
128.027  
128.010  
127.903  
127.704  
127.636  
127.506  
126.552  
126.216  
126.178  
126.155  
125.834  
125.231  
125.147  
125.101  
124.193  
123.758  
123.048  
121.307  
120.475  
120.201

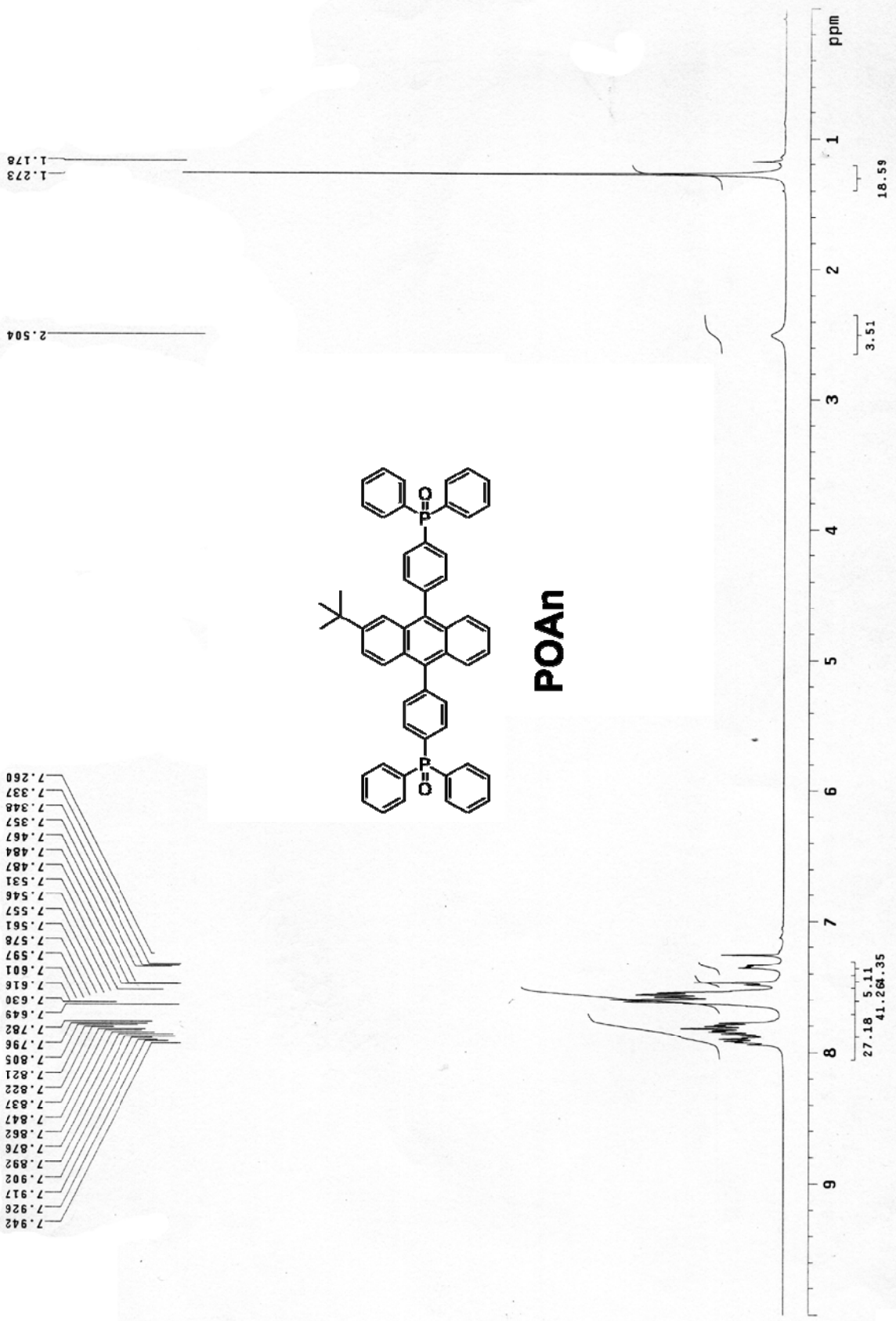
64.835  
64.598

34.701  
34.018  
30.774  
30.529  
29.904  
29.468  
29.316  
29.163  
29.010  
28.858  
28.705  
28.545



tBu-OXD-TFA





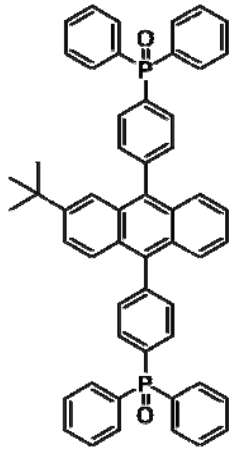
AnPO/CDC13  
961227dept

Pulse Sequence: DEPT

35.006  
30.599

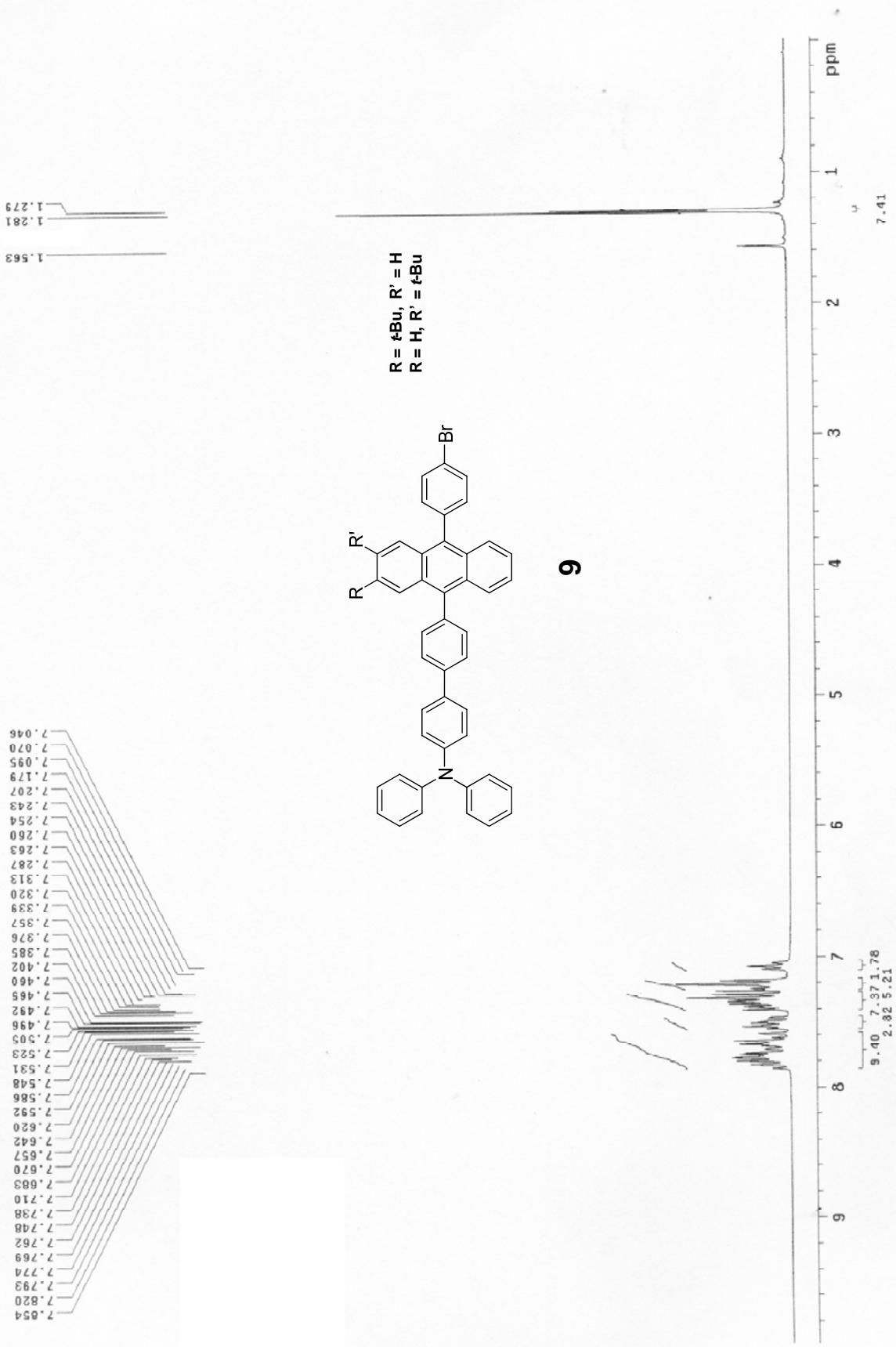
77.257  
77.000  
76.749

147.823  
143.203  
143.182  
136.839  
135.631  
132.805  
132.652  
132.247  
132.165  
131.974  
131.941  
131.821  
131.580  
131.558  
131.482  
131.460  
129.557  
129.163  
128.710  
128.682  
128.617  
128.584  
128.097  
126.539  
126.517  
126.293  
125.975  
125.172  
125.107  
120.607



# POAn

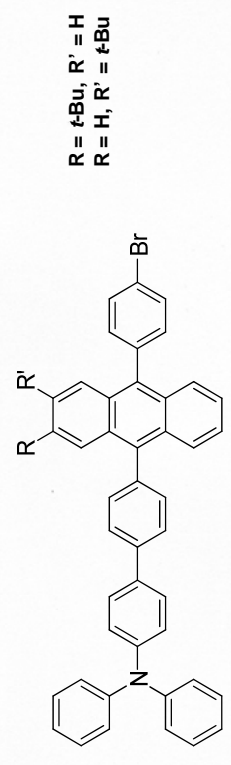
180 160 140 120 100 80 60 40 20 ppm



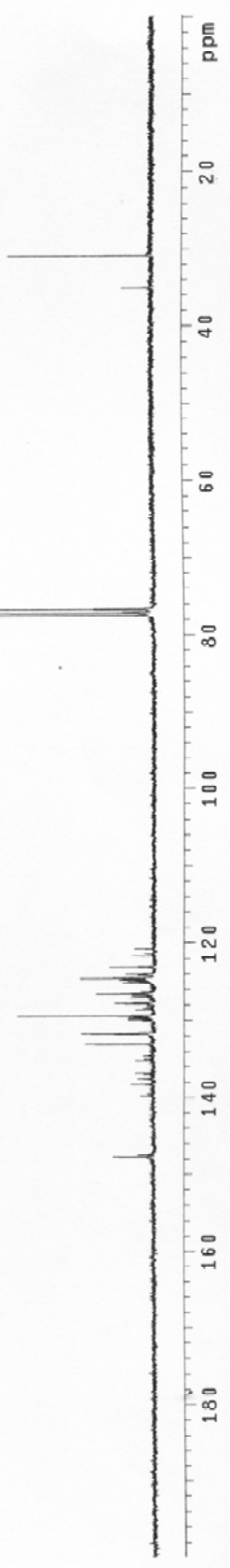
30.760  
34.980

77.421  
77.000  
76.579

147.651  
147.591  
139.666  
138.210  
138.143  
137.449  
137.021  
136.021  
135.219  
135.025  
134.644  
133.066  
131.673  
131.606  
130.037  
129.930  
129.823  
129.683  
129.570  
129.429  
129.309  
128.475  
128.341  
127.760  
127.039  
126.779  
126.525  
126.398  
126.264  
125.109  
124.902  
124.709  
124.669  
124.488  
124.068  
123.934  
122.993  
121.584  
121.243  
120.702



6

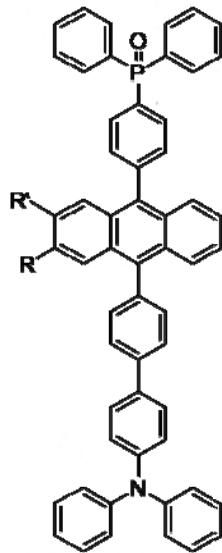




TPAPOAN  
980202H

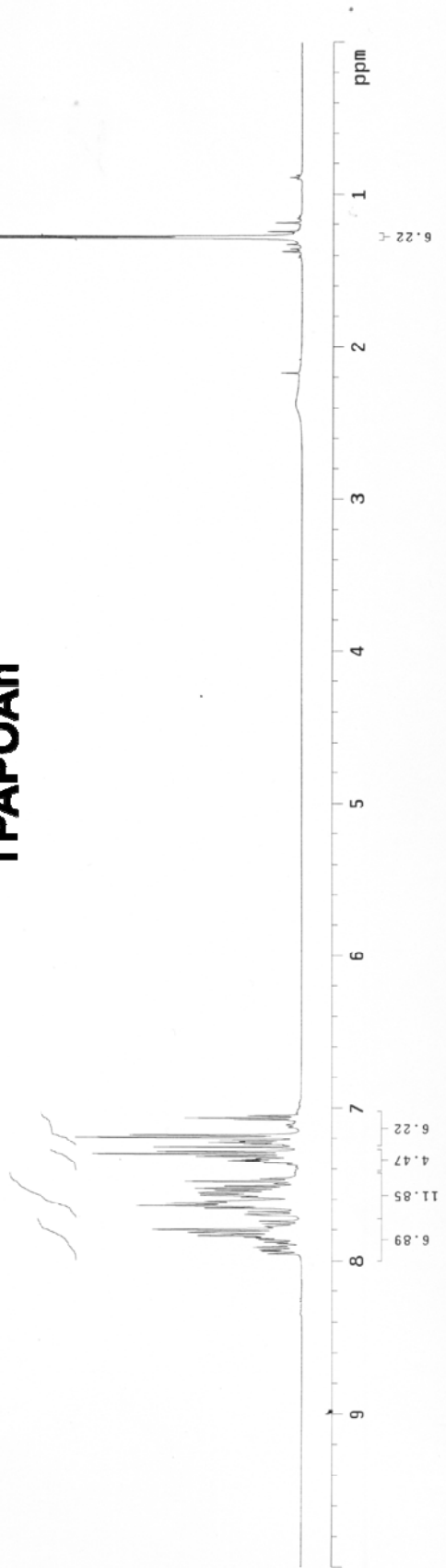
Pulse Sequence: s2pu1

7.939  
7.930  
7.914  
7.878  
7.863  
7.853  
7.847  
7.837  
7.832  
7.817  
7.800  
7.762  
7.743  
7.700  
7.683  
7.661  
7.644  
7.630  
7.615  
7.587  
7.573  
7.571  
7.560  
7.557  
7.555  
7.541  
7.528  
7.512  
7.479  
7.463  
7.353  
7.346  
7.339  
7.333  
7.320  
7.303  
7.288  
7.260  
7.242  
7.232  
7.225  
7.215  
7.194  
7.178  
7.079  
7.064  
7.050



# TPAPOAN

1.286  
1.275





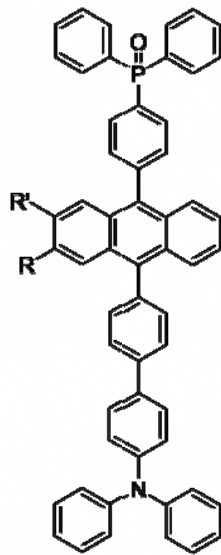
TPAPOAn  
580202C

Pulse Sequence: s2pul1

147.679  
147.382  
139.740  
134.626  
132.275  
132.198  
132.175  
131.702  
131.672  
131.618  
129.641  
129.565  
129.305  
129.259  
128.725  
128.702  
128.633  
128.603  
128.466  
127.771  
127.725  
127.092  
126.832  
126.534  
126.404  
125.290  
125.053  
124.946  
124.794  
124.702  
124.496  
124.443  
124.061  
123.931  
123.008  
122.985

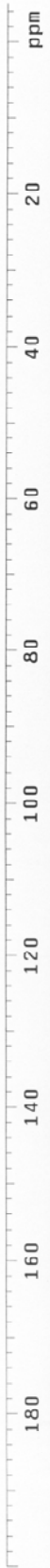
77.260  
77.000  
76.748

35.000  
34.977  
30.756  
30.641



R = t-Bu, R' = H  
R = H, R' = t-Bu

TPAPOAn



```

Current Data Parameters
=====
NAME      TPAAN
EXPNO     5
PROCNO    1

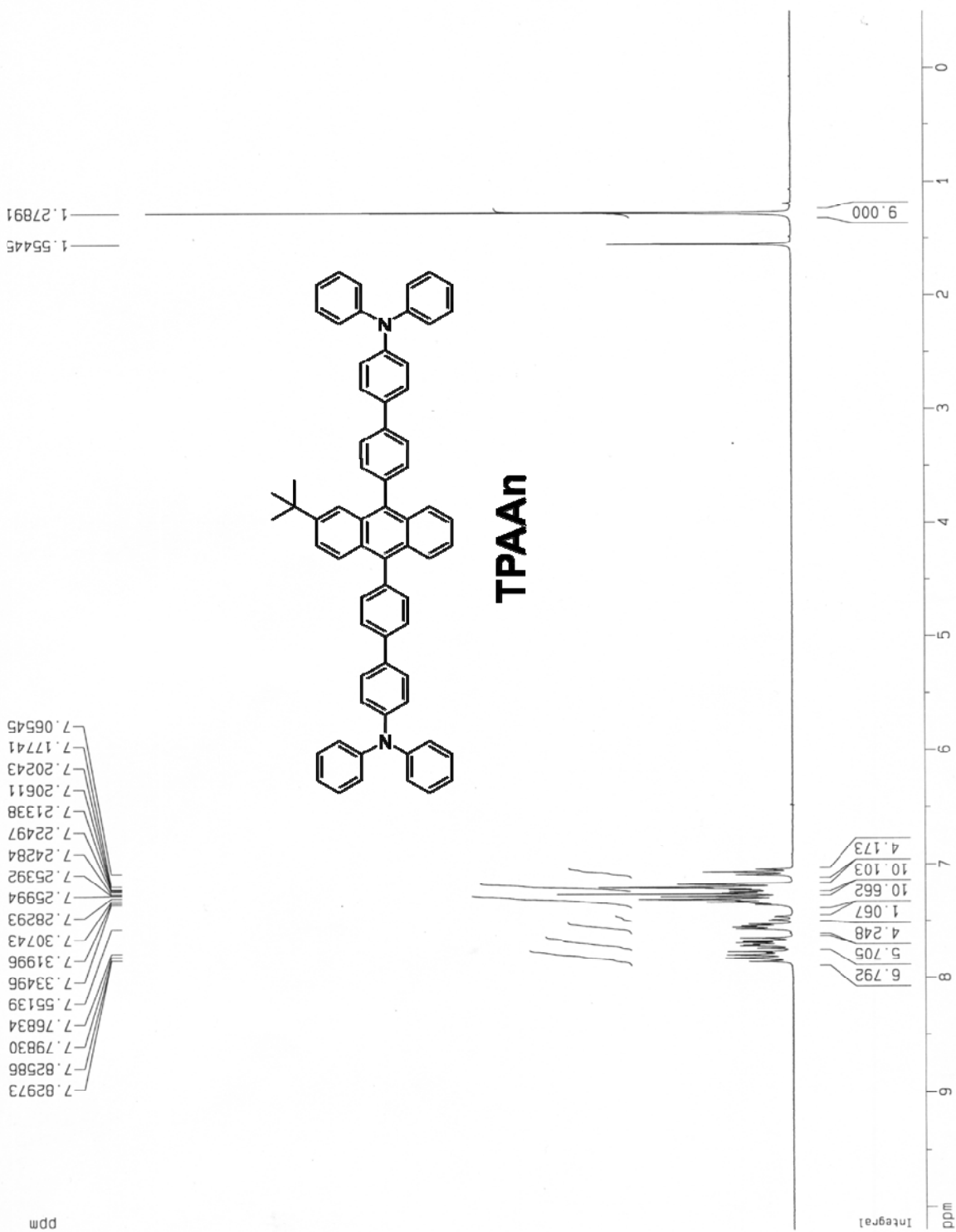
F2 - Acquisition Parameters
=====
Date_     20080505
Time      9.57
INSTRUM   spect
PROBHD    5 mm MLLP1H
PULPROG   zgpg30
TC        16384
AQ        0.16384
SFO1       300.13
NS         16
DS         0
SWH        4789.272 Hz
FIDRES    0.256314 Hz
AQRES     1.710256 sec
RG         300
DE         104.400 umet
OE         6.50 usec
TE         300.0 K
D1         2.0000000 sec

***** CHANNEL f1 *****
NUC1       1H
P1         10.00 usec
PL1        -3.00 dB
SFO1       300.1313500 MHz

F2 - Processing parameters
=====
SI         16384
SF         300.1300053 MHz
WDW        EM
SSB        0
LB         0.10 Hz
GB         0
PC         1.00

1D NMR plot parameters
=====
CX         23.00 cm
FIDRES    10.200 ppm
F1         3001.33 Hz
FPP        -0.500 ppm
RG         300
PROBHD    5 mm MLLP1H
PULPROG   zgpg30
TC        16384
AQ        0.16384 sec/cx
SFO1       300.1300053 MHz/cm

```

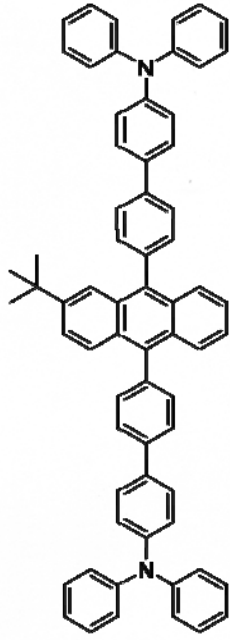


Current: 10.00 uA  
 Voltage: 1000.00 V  
 F2 - Acquisition Parameters  
 Date\_ 20080124  
 Time\_ 10:52:11  
 INSTRUM 5 mm HPLC  
 PULPROG zgpg30  
 TD 65536  
 SFO 300.132050 MHz  
 AQ 0.257266 Hz  
 FIDRES 0.257266 Hz  
 AD 1.7402008 Hz  
 DN 26.550 uHz  
 TE 30.50 uHz  
 DE 1.50000000 Hz  
 DI 1.50000000 Hz  
 D1 0.30000000 Hz  
 D2 0.30000000 Hz  
 \*\*\*\*\* CHANNEL f1 \*\*\*\*\*  
 MUX1  
 P1 91.50 uHz  
 SFO1 300.132050 MHz  
 \*\*\*\*\* CHANNEL f2 \*\*\*\*\*  
 CPDPRG2 waltz16  
 MUX2  
 PULPROG2 zgpg30  
 PUL2 2.00 dB  
 PL12 2.79 dB  
 SFO2 300.132050 MHz  
 F2 - Processing parameters  
 SF 300.132050 MHz  
 DF 30768  
 AS 0  
 SB 0  
 LB 1.00 Hz  
 GB 1.00  
 PC 1.00  
 ISM 0101 Parameters  
 CX 23.50 cm  
 F1 1000.000000 MHz  
 F2 1000.000000 MHz  
 F3 1000.000000 MHz  
 PRGM 8.3304 cmh/ea  
 HZDN 662.71875 Hz/ea

30.783  
 34.950

76.579  
 77.002  
 77.425

C13  
 122.962  
 124.408  
 124.463  
 127.768  
 129.305  
 131.794  
 134.718  
 139.567  
 147.308  
 147.681



**TPAAn**

