



COMMUNITY OF UPPER LAYER



1950

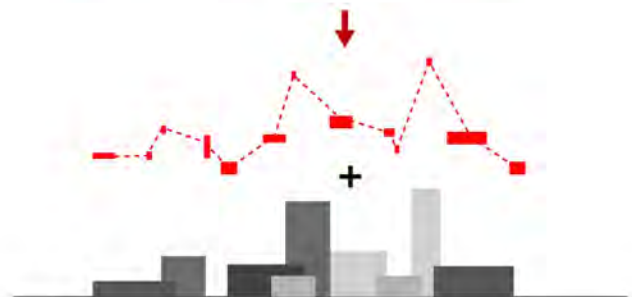


1980



NOW

In Taiwan, the temporary illegal construction is a basic scene in our cities. And like any developing country, these construction means inflating population. The uncontrolled upper layer seems like another linkage beyond us.





PUBLIC

ILLEGALLY OCCUPIED



RURAL

LIVING

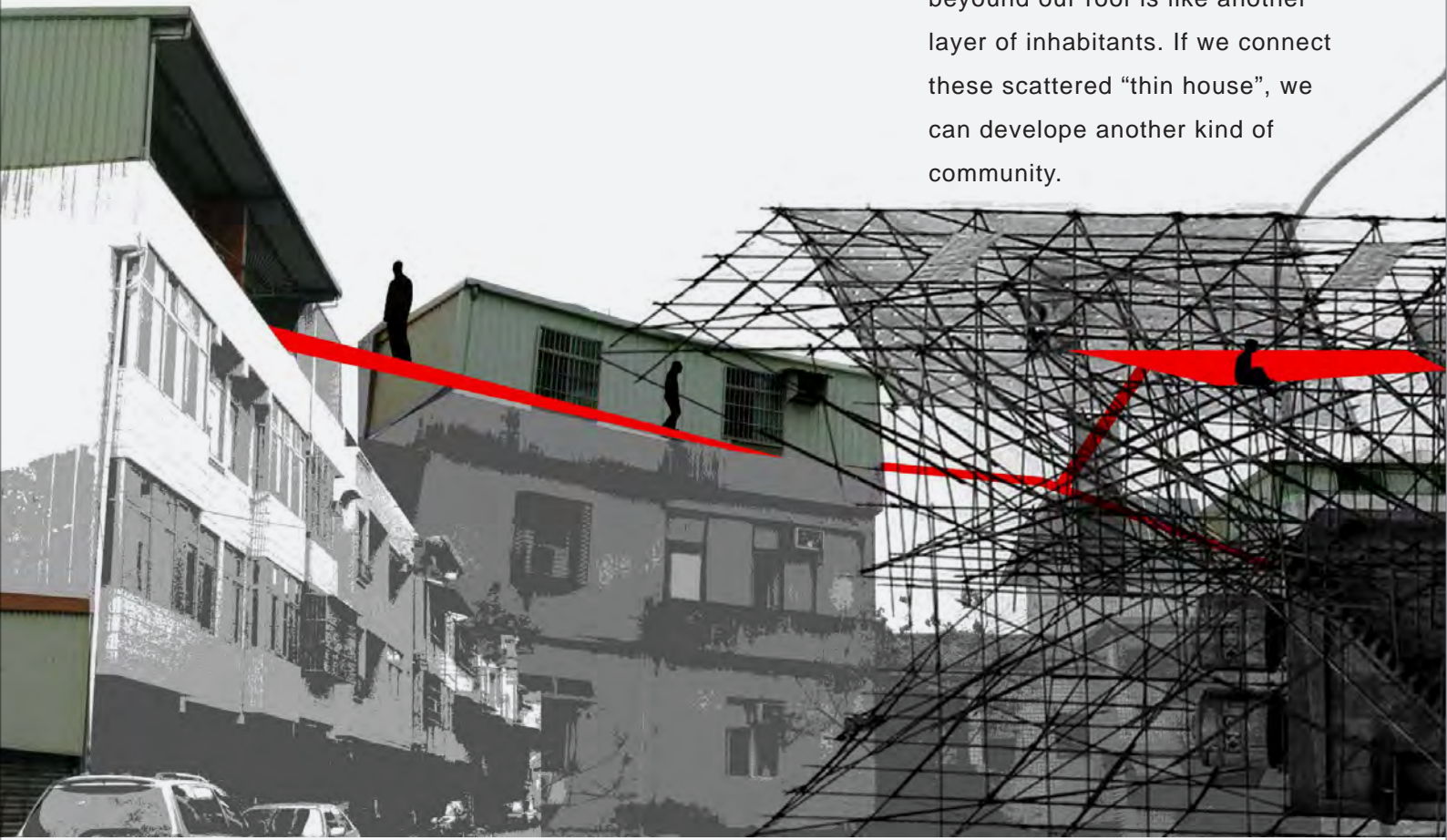
URBAN





CONCEPT

Numerous temporary construction beyond our roof is like another layer of inhabitants. If we connect these scattered “thin house”, we can develop another kind of community.



UNIT - CONTAINER

The unit for individual to live is correspond to the size of a single container. The characters of the “thin” and the “temporary” are linked to my issue of concept.



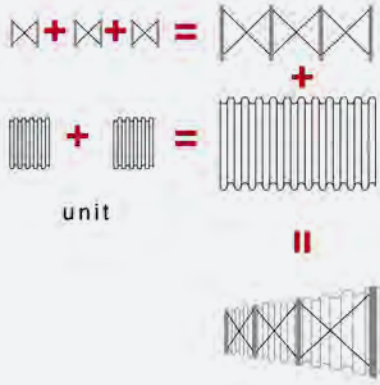
6m

2.5m

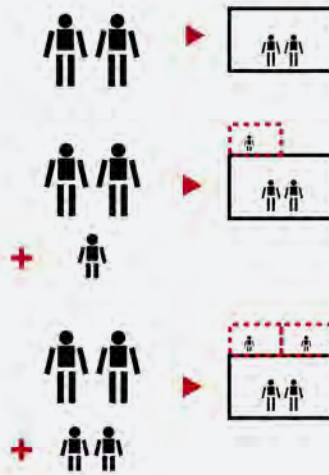




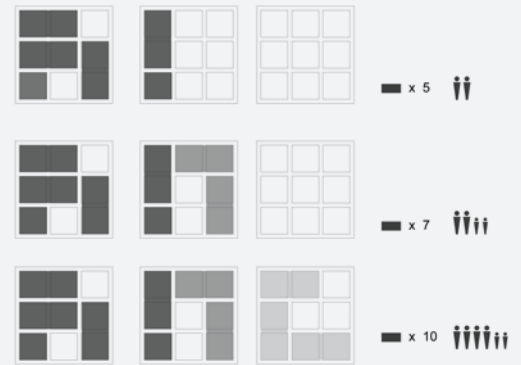
TEMPORARY



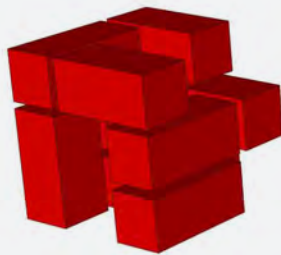
REPLACEMENT



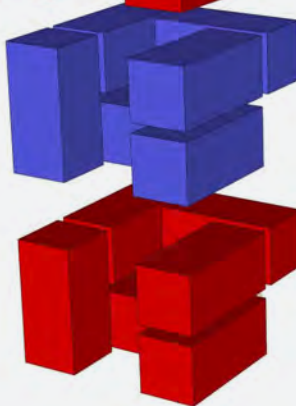
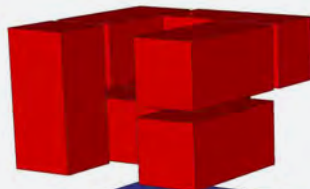
CAPACITY



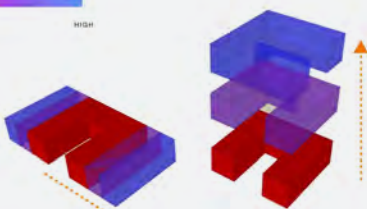
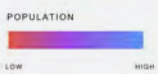
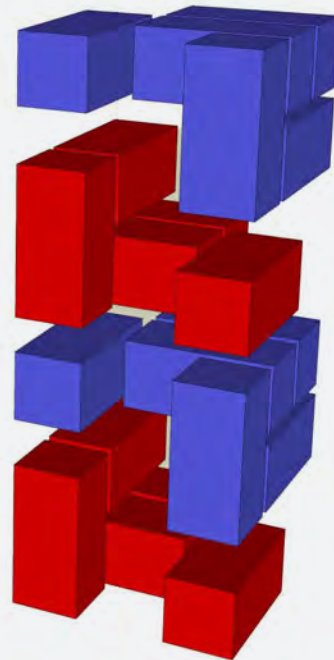
FOR 5 - 6 PEOPLE



FOR 3 - 4 PEOPLE



FOR 1 - 2 PEOPLE

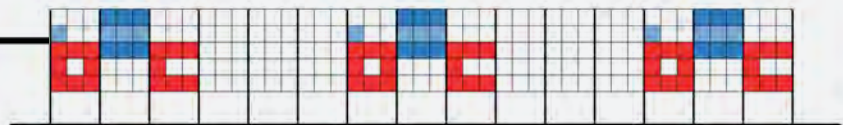
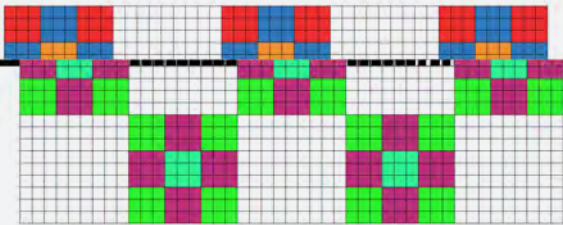


TRADITIONAL

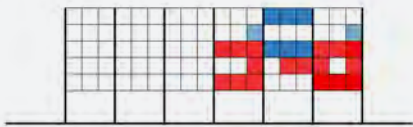
NEW



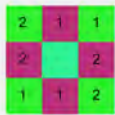
PROCESS



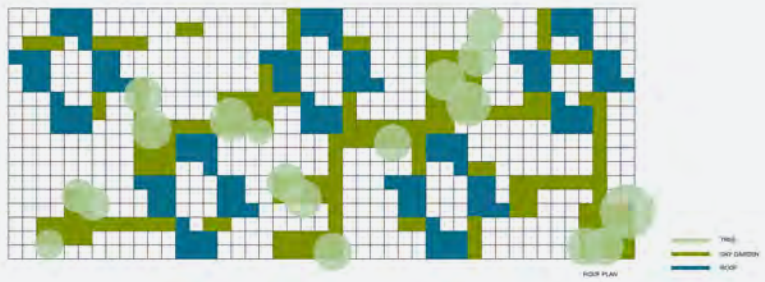
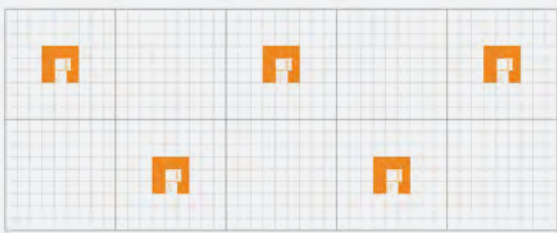
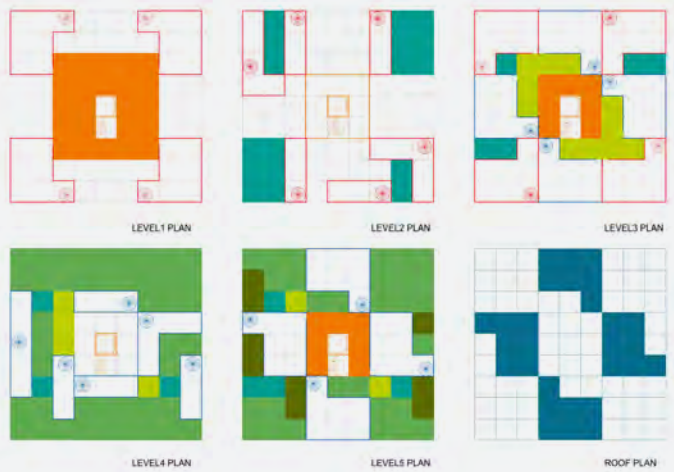
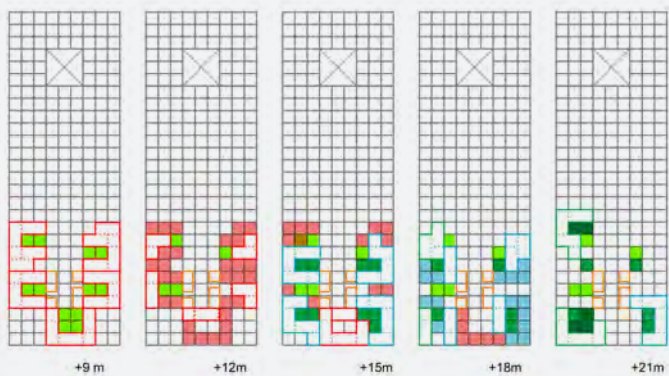
NORTH ELEVATION



SOUTH ELEVATION



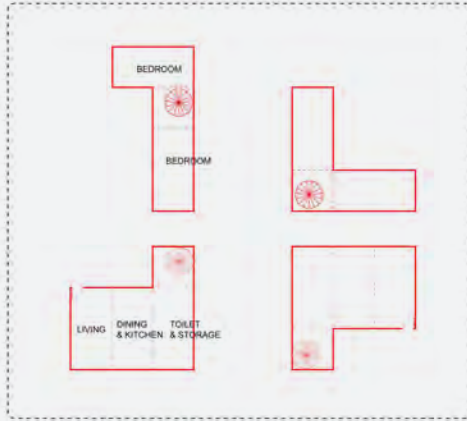
12
 VERTICAL CIRCULATION UNIT
 UPPER RESIDENTIAL UNIT
 LOWER RESIDENTIAL UNIT
 RESIDENTIAL UNIT



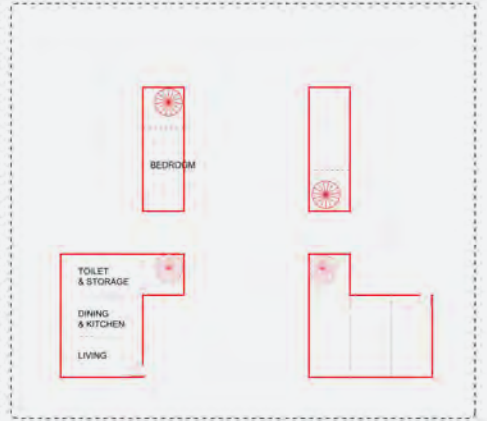
TREE
 GRASS GARDEN
 ROOF



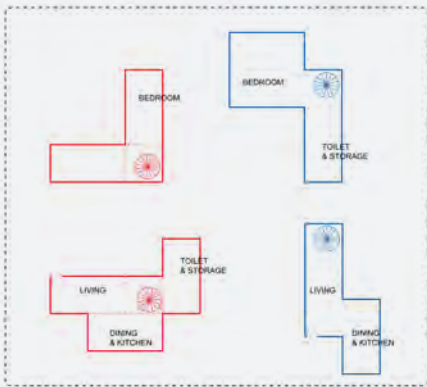
8 CONTAINERS FOR 5 TO 6 PEOPLE



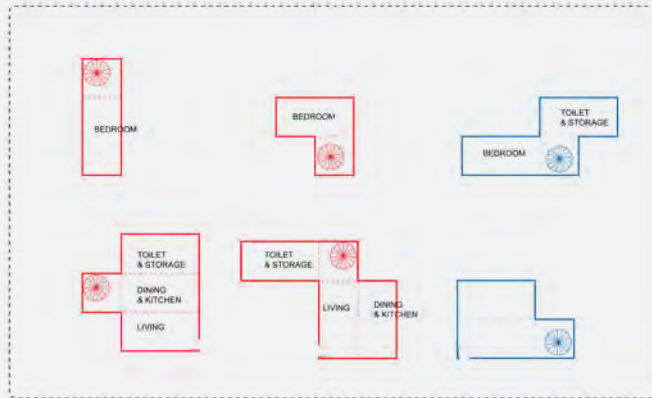
6 CONTAINERS FOR 3 TO 4 PEOPLE



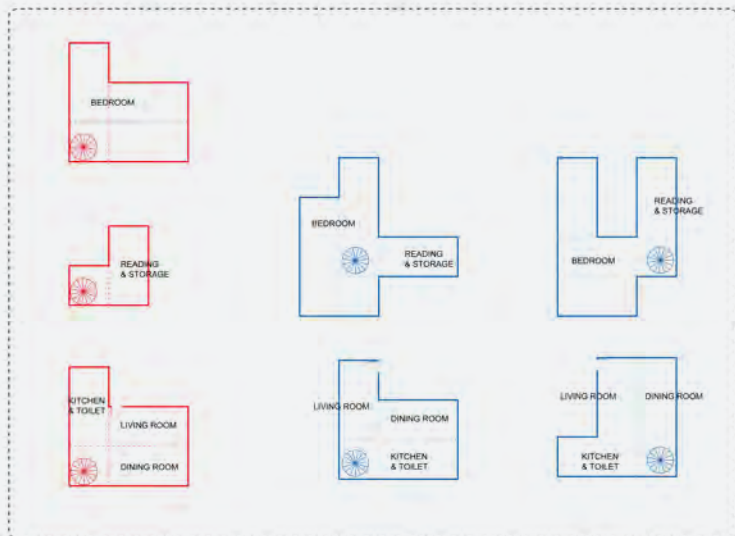
5 CONTAINERS FOR 1 TO 2 PEOPLE



5 CONTAINERS FOR 1 TO 2 PEOPLE



6 CONTAINERS FOR 3 TO 4 PEOPLE

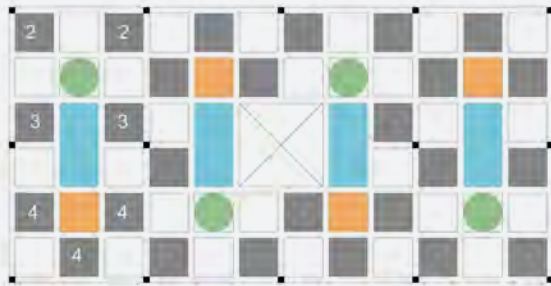


8 CONTAINERS FOR 5 TO 6 PEOPLE

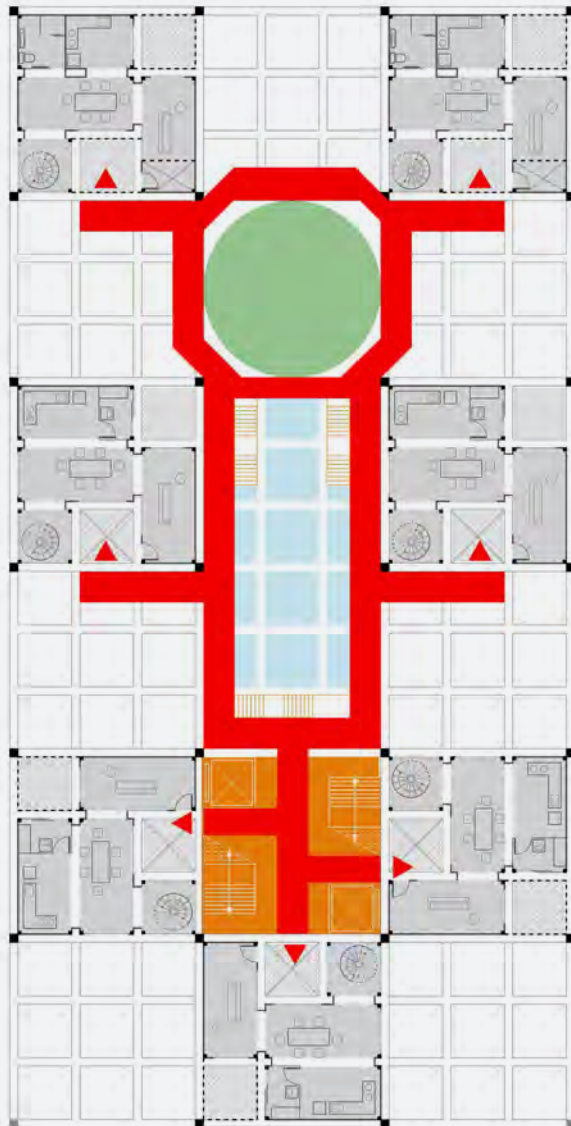


CIRCULATION

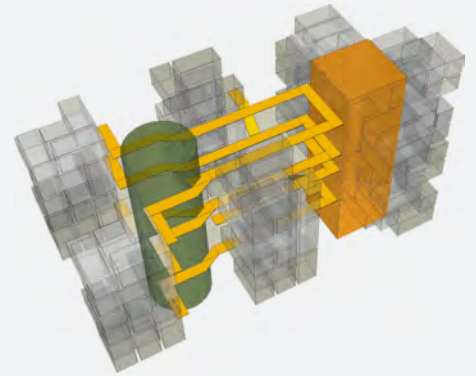
temporary



- GREEN CORE
- VERTICAL CIRCULATION
- SKYLIGHT
- RESIDENTIAL UNIT



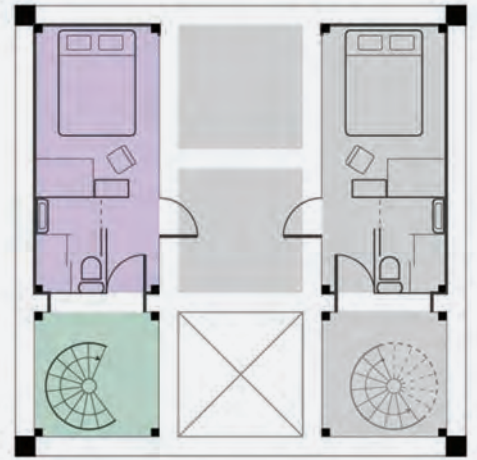
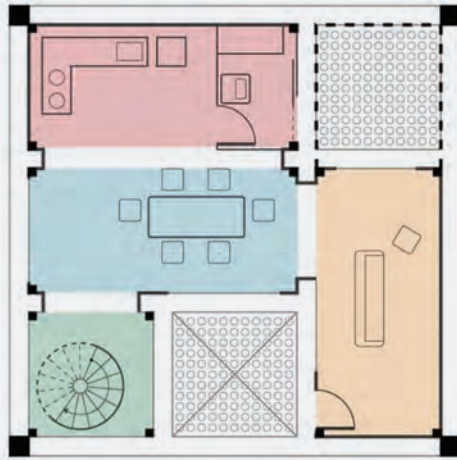
- CIRCULATION
- VERTICAL CIRCULATION



- GREEN CORE
- CIRCULATION



PLAN



LOWER LEVEL

MIDDLE LEVEL



5 CONTAINERS

- LIVING
- DINING
- KITCHEN & LAUNDRY
- VERTICAL CIRCULATION
- BEDROOM



7 CONTAINERS

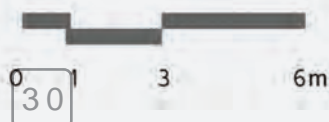
- LIVING
- DINING
- KITCHEN & LAUNDRY
- VERTICAL CIRCULATION
- CORRIDOR & TOILET
- BEDROOM



10 CONTAINERS

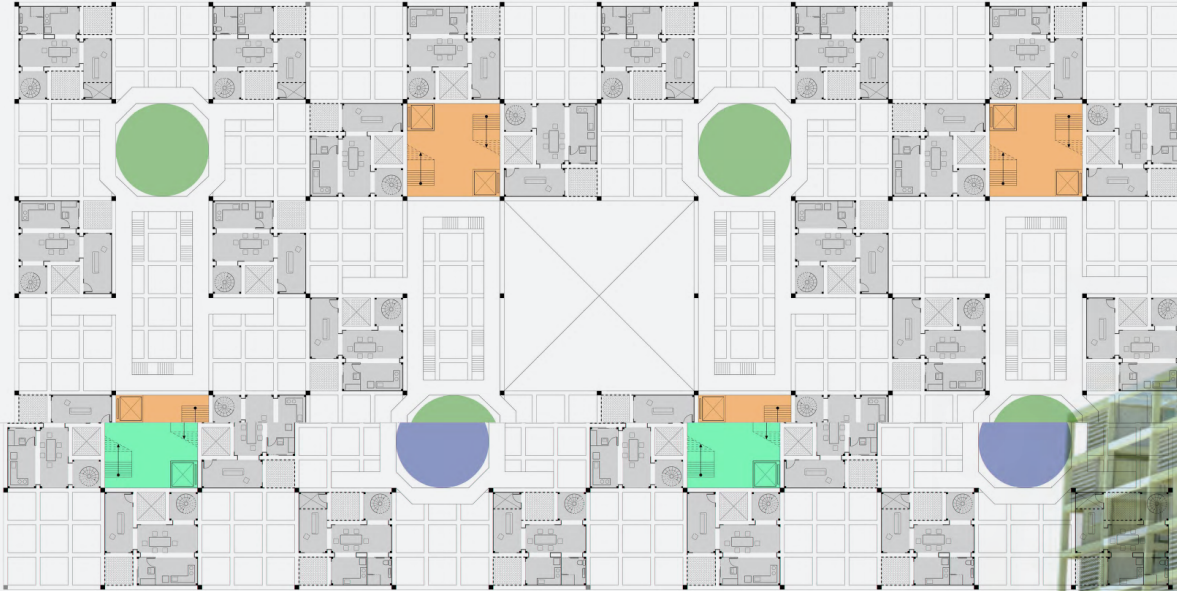
- LIVING
- DINING
- KITCHEN & TOILET
- VERTICAL CIRCULATION
- CORRIDOR & TOILET
- READING ROOM
- BEDROOM

HIGHER LEVEL

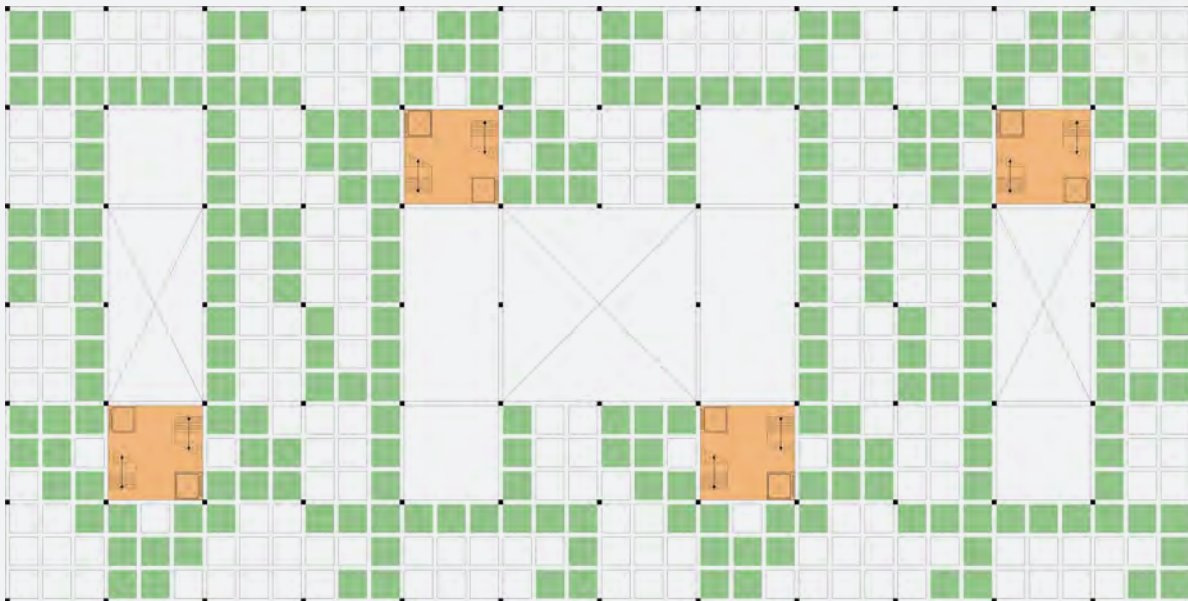
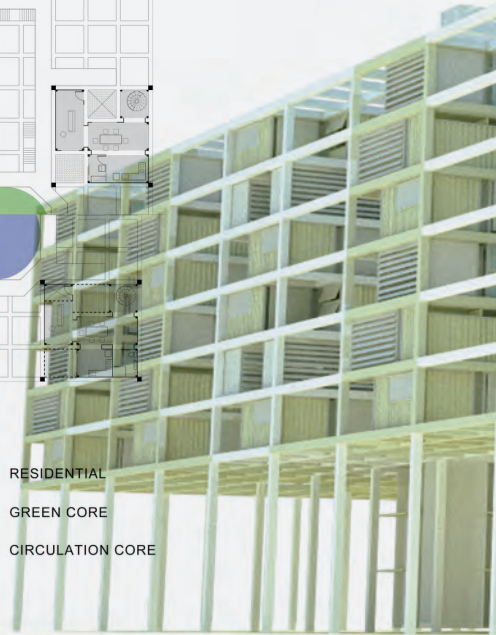




ROOF PLAN



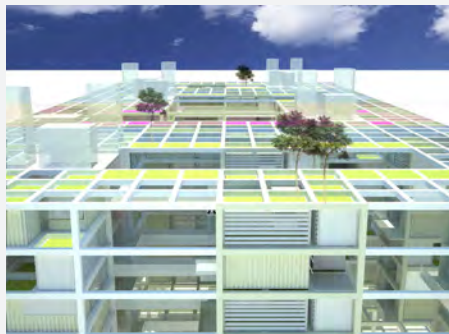
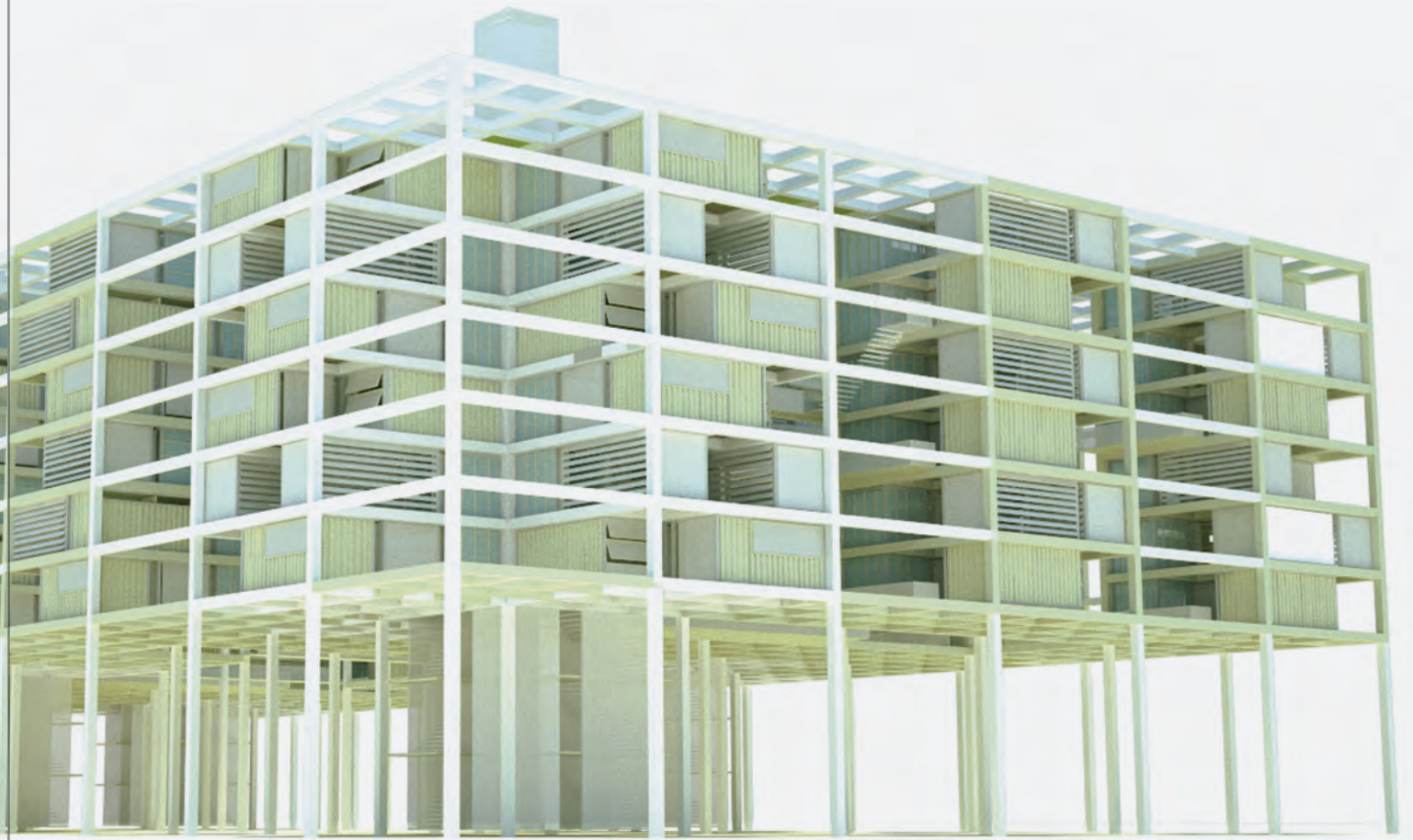
- RESIDENTIAL
- GREEN CORE
- CIRCULATION CORE





ASSEMBLY HOUSES

temporary



1

2

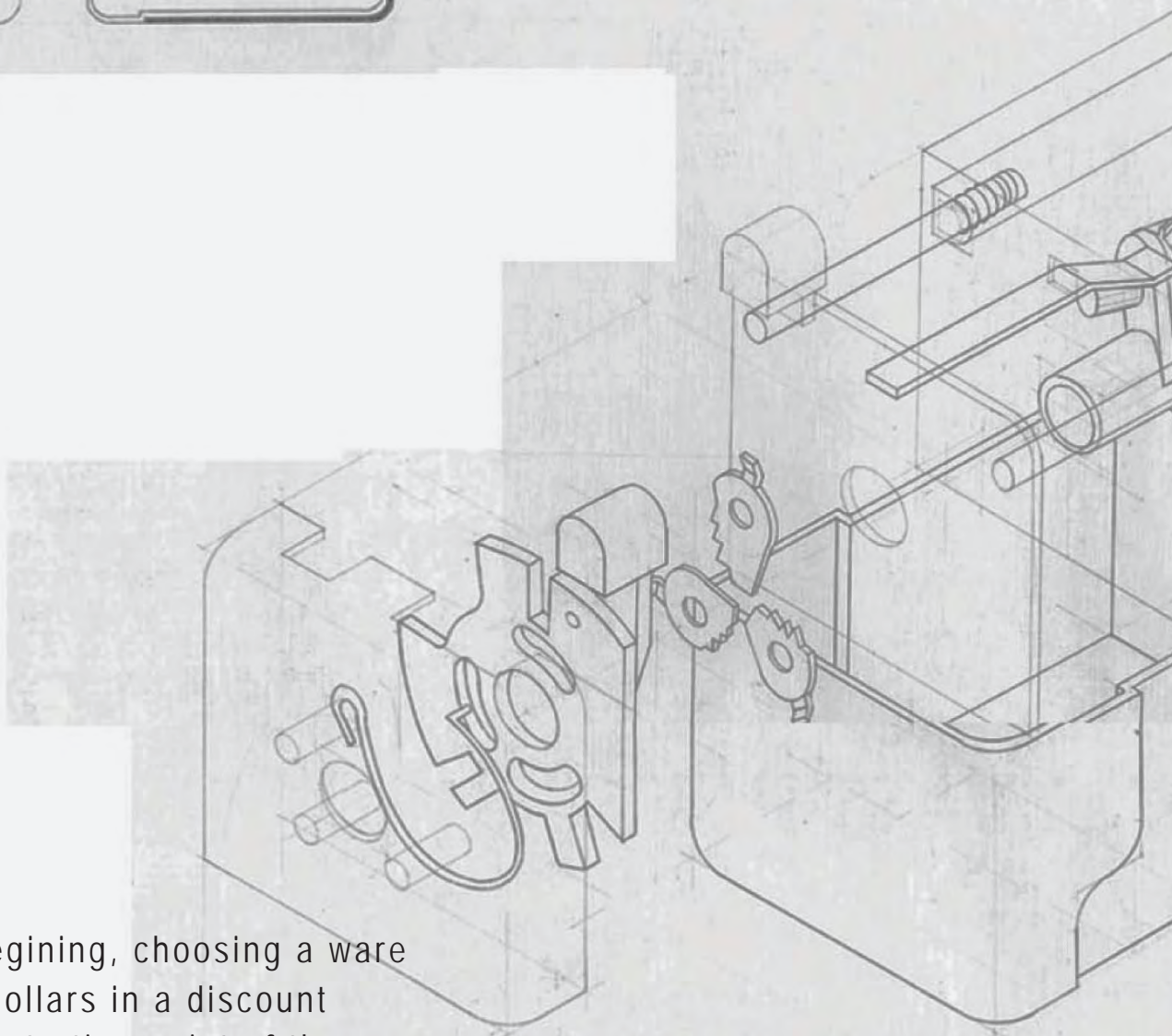
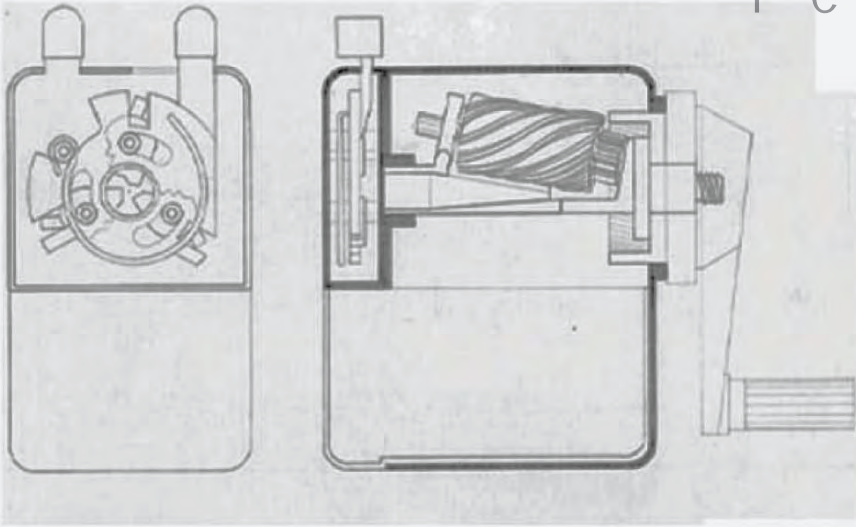
1. ROOF GARDEN

2. PUBLIC CORRIDOR



chapter 4

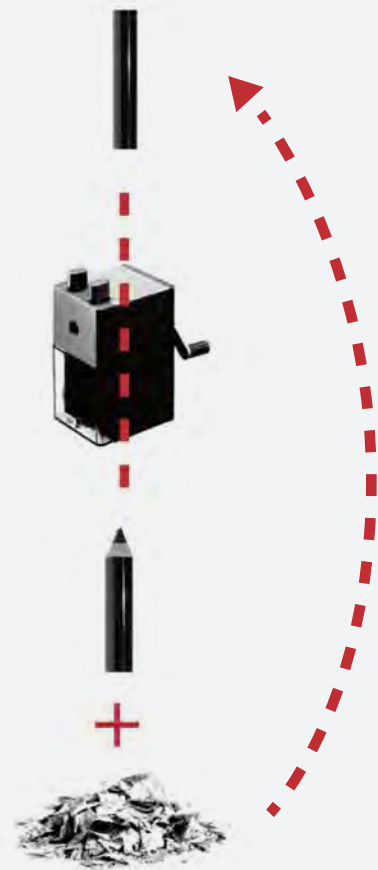
recycle



From the beginning, choosing a ware under 100 dollars in a discount store is the starting point of the designing course. Pencil sharpener can grind pencil into wood flour, and function of this machine means a start of a series transformation.



The first step of this design course is to find some “gizmo” that we are interested in. With the unknown development that professor assigned to us, the final result somehow would link to our choice from beginning.



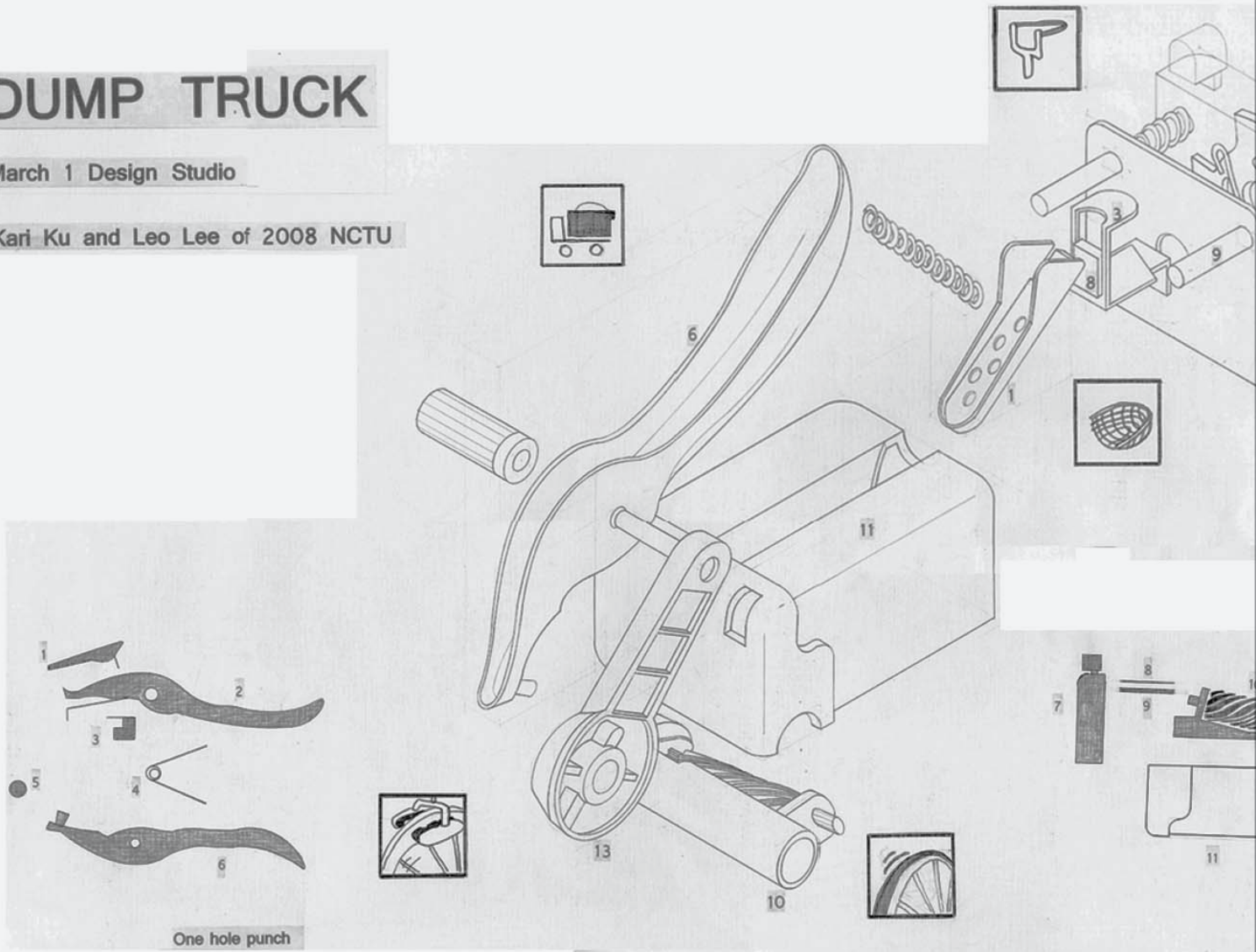


COMBINATION-DUMP TRUCK

DUMP TRUCK

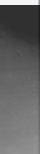
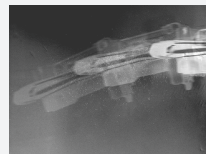
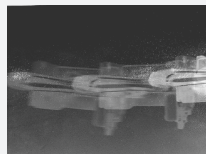
March 1 Design Studio

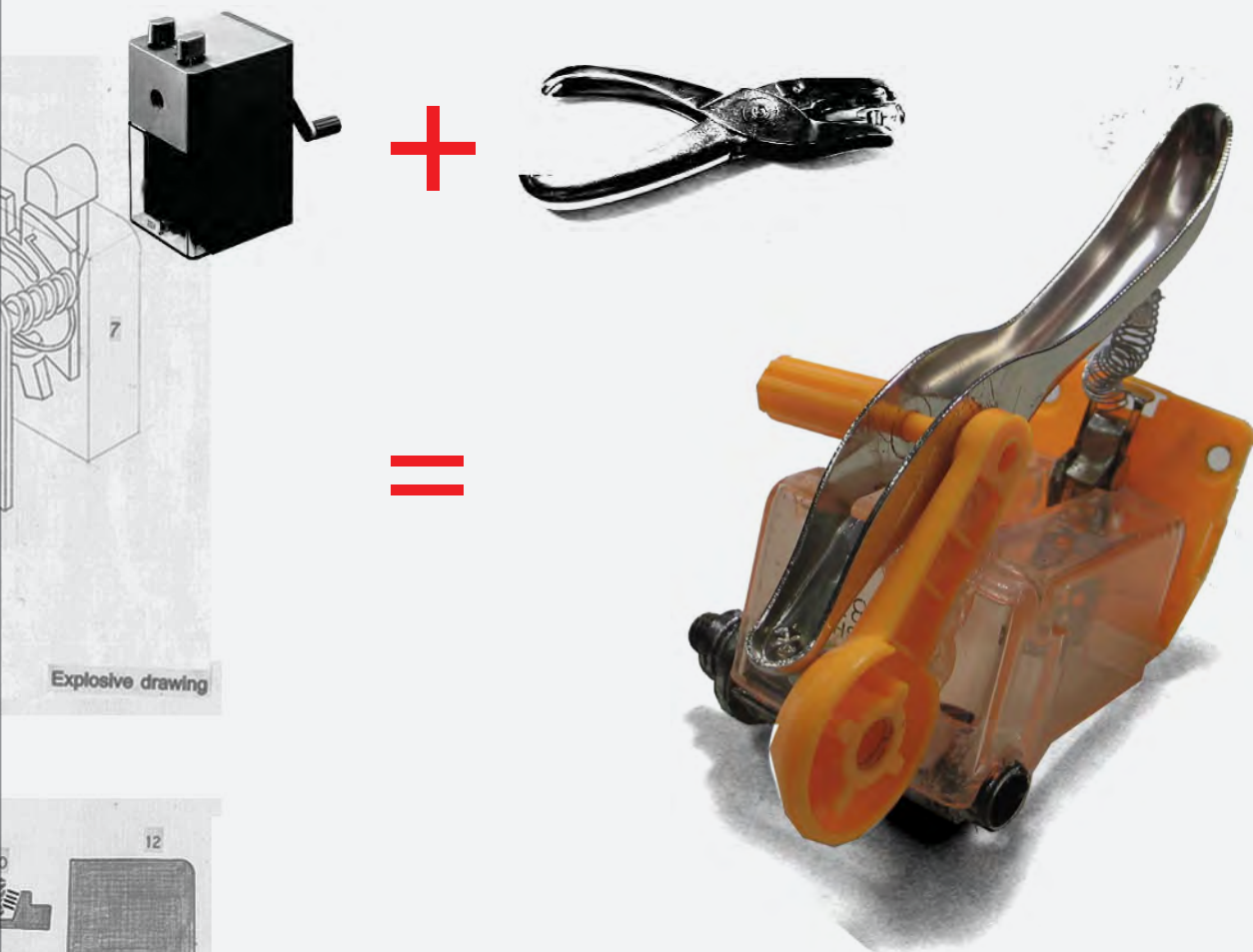
Kari Ku and Leo Lee of 2008 NCTU



One hole punch

Scale: 2/1





SAND TRACE OF DUMP TRUCK





SCENARIO -RECYCLE & DENSITY

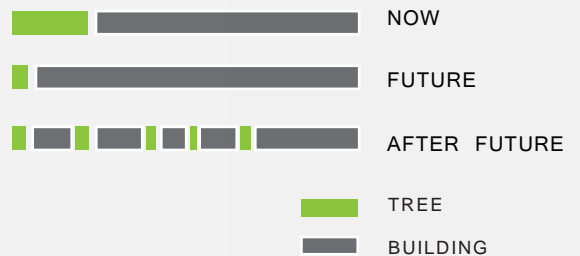
When dump truck smash the dying city, it scatters the plane seeds at the same time. So, after many years, the plane grows up. The new trace of green road means the scar of old dying city.



FULL

CRUSHED

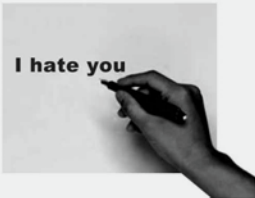
RENEWED



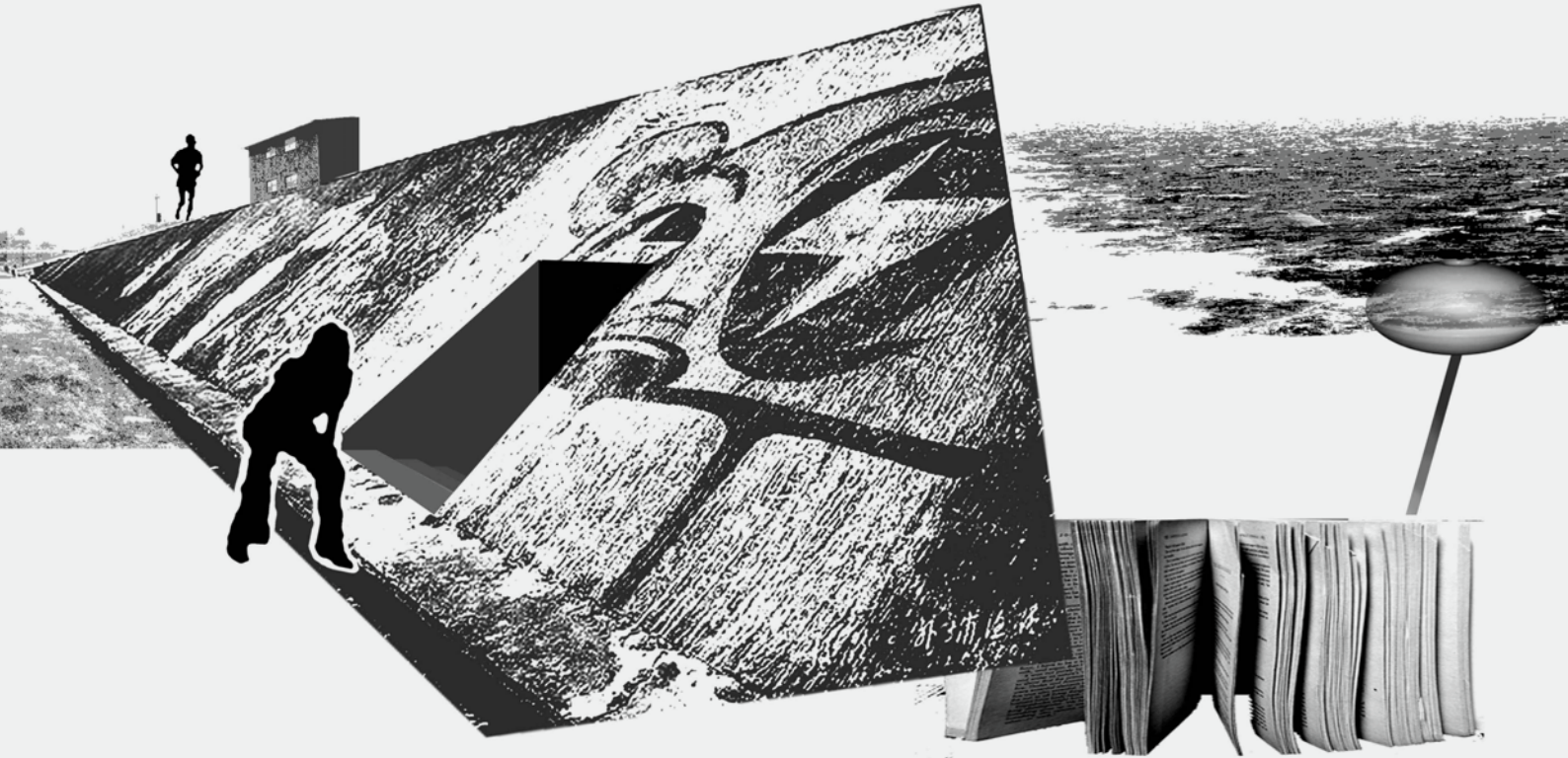


READING MACHINE

recycle



A reading room for people
to release pressure is like
the function of a toilet.
People feel the variation
inside as tides rise and ebb.

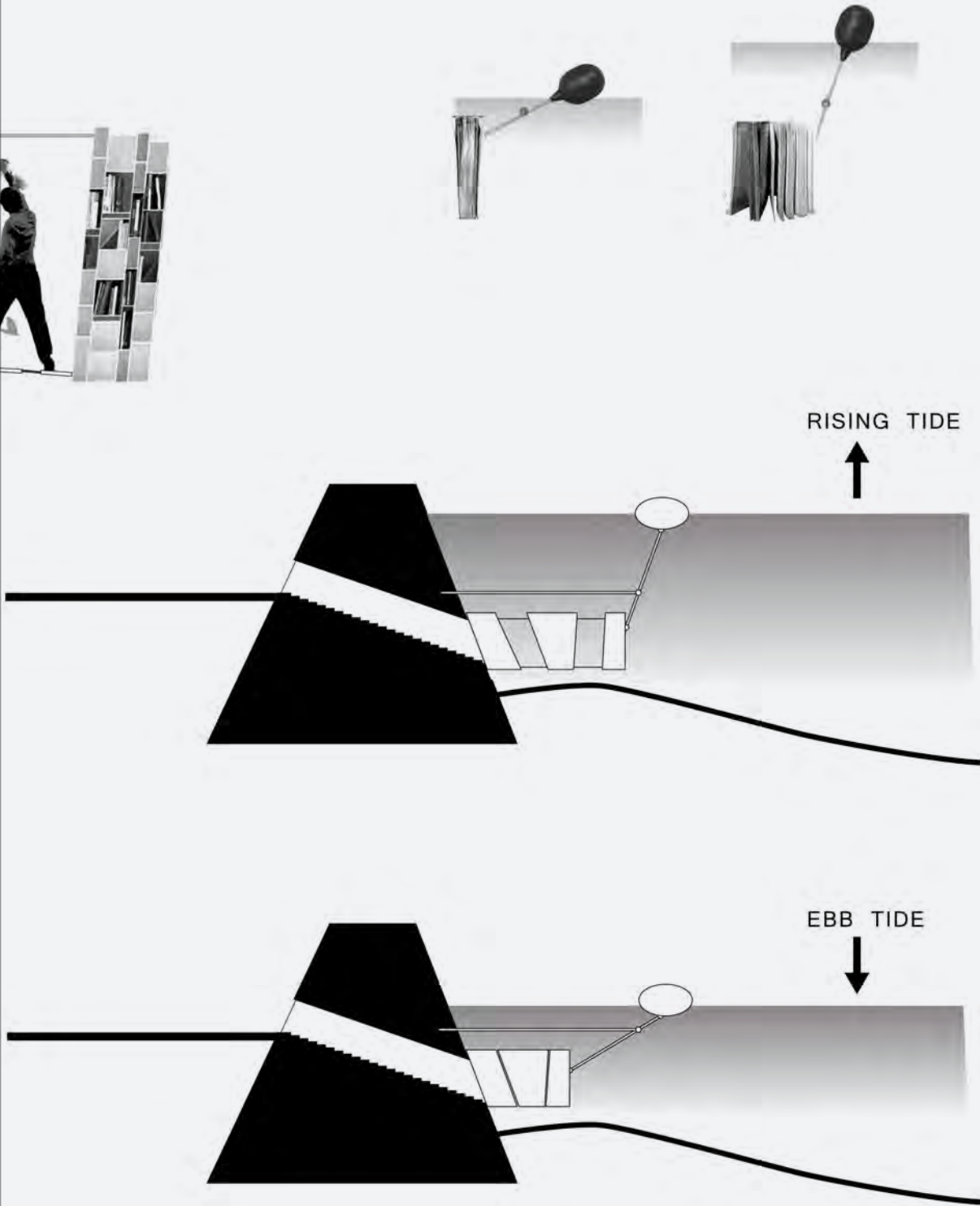




READING MACHINE

Like a toilet ball, with the rising and the ebbing of the tide, the graffiti reading people drew inside will be erased. People will change their reading behavior by the changing of the tide.







SITE



GREEN STRETCH



TEXTURE



SEDUCTION

A boundary between the dying downtown and the prosperous bustling school district is vague by a buffering central park. A plenty of consuming reference books and comics creates a chance to stretch the bustling area and to form a public square for the used books. By that, students can release the studying pressure and general people gets a platform of books park.



RECYCLING & THROWING SPACE

recycle



RECYCLE



FOR TEENAGERS



PRINCIPLE

USED BOOKS



CLASSIFICATION



OVERDUE



RECYCLE



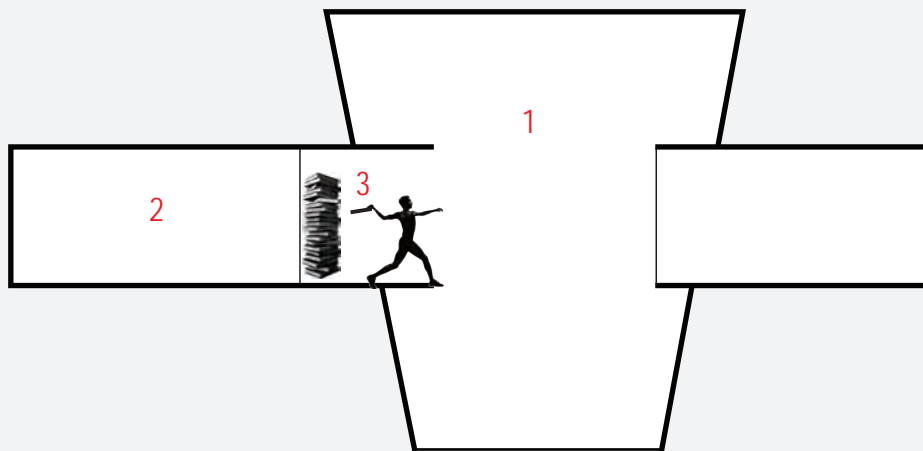
READER



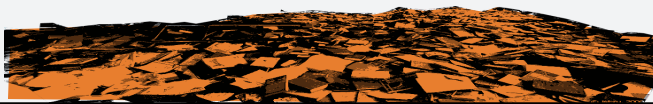
LIBRIAN



Shool stydents are a crowd under heavily reading pressure. What they need is a place to read and to release themselves. So, I want to creat a space where students can combine the two behaviors.

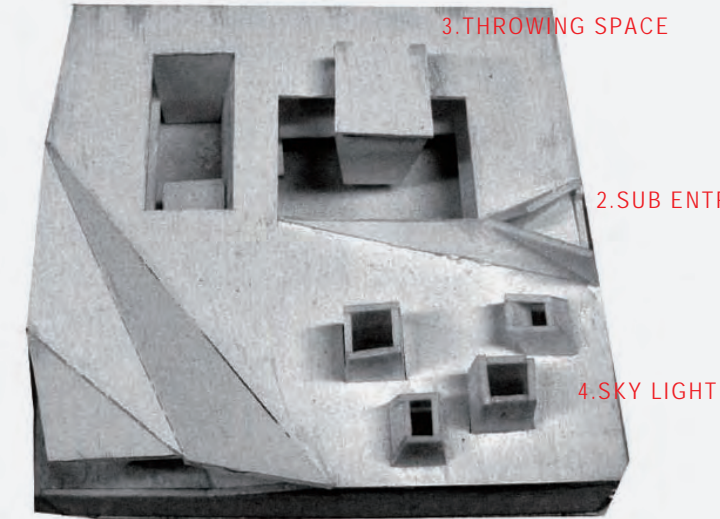


- 1. THROWING SPACE
- 2. READING ROOM
- 3. USELESS BOOK STACKING ROOM





MODEL 1

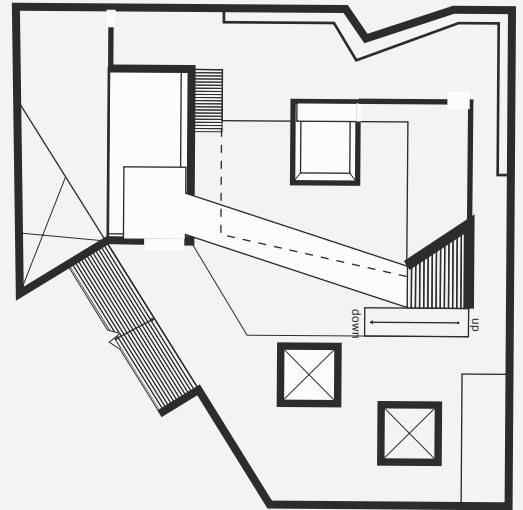


1.MAIN ENTRANCE

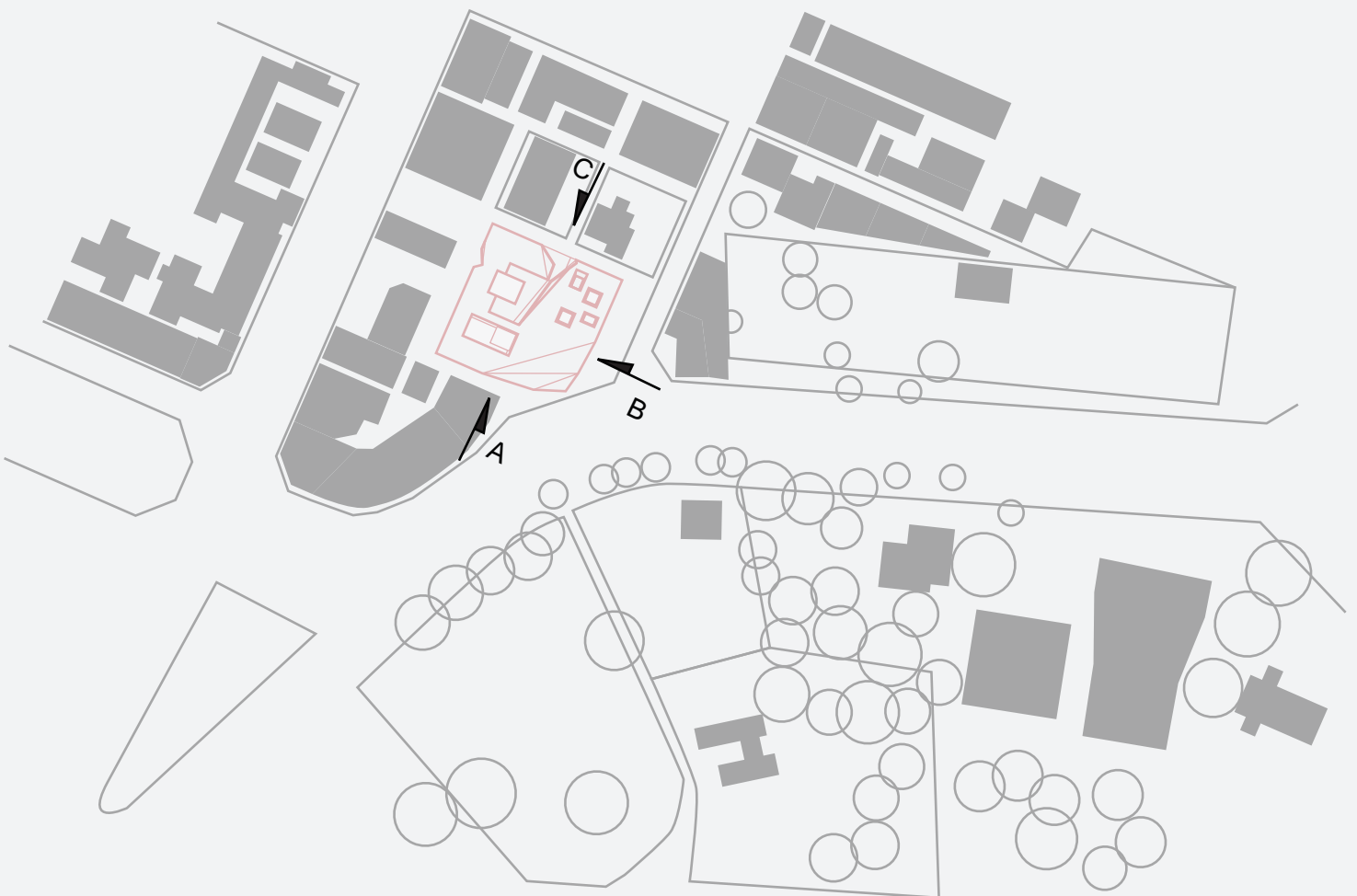
3.THROWING SPACE

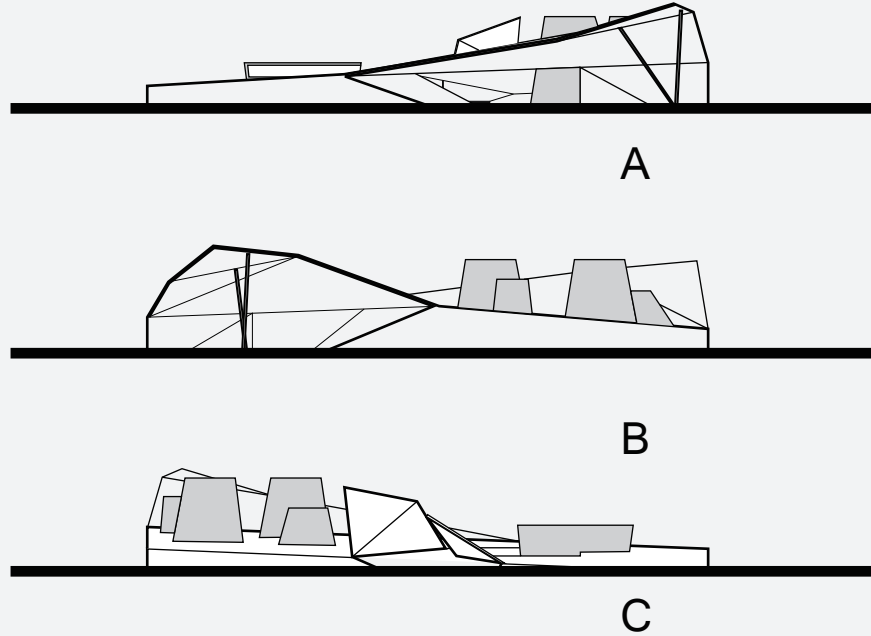
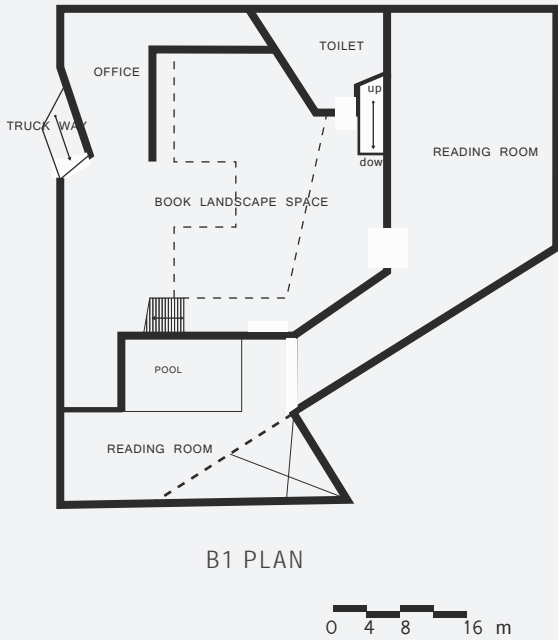
2.SUB ENTRANCE

4.SKY LIGHT

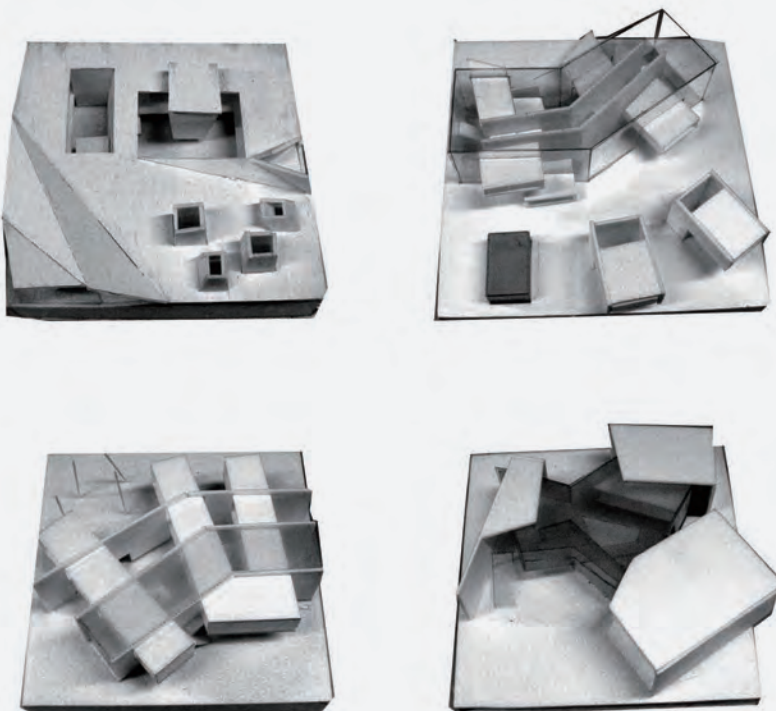


IF PLAN

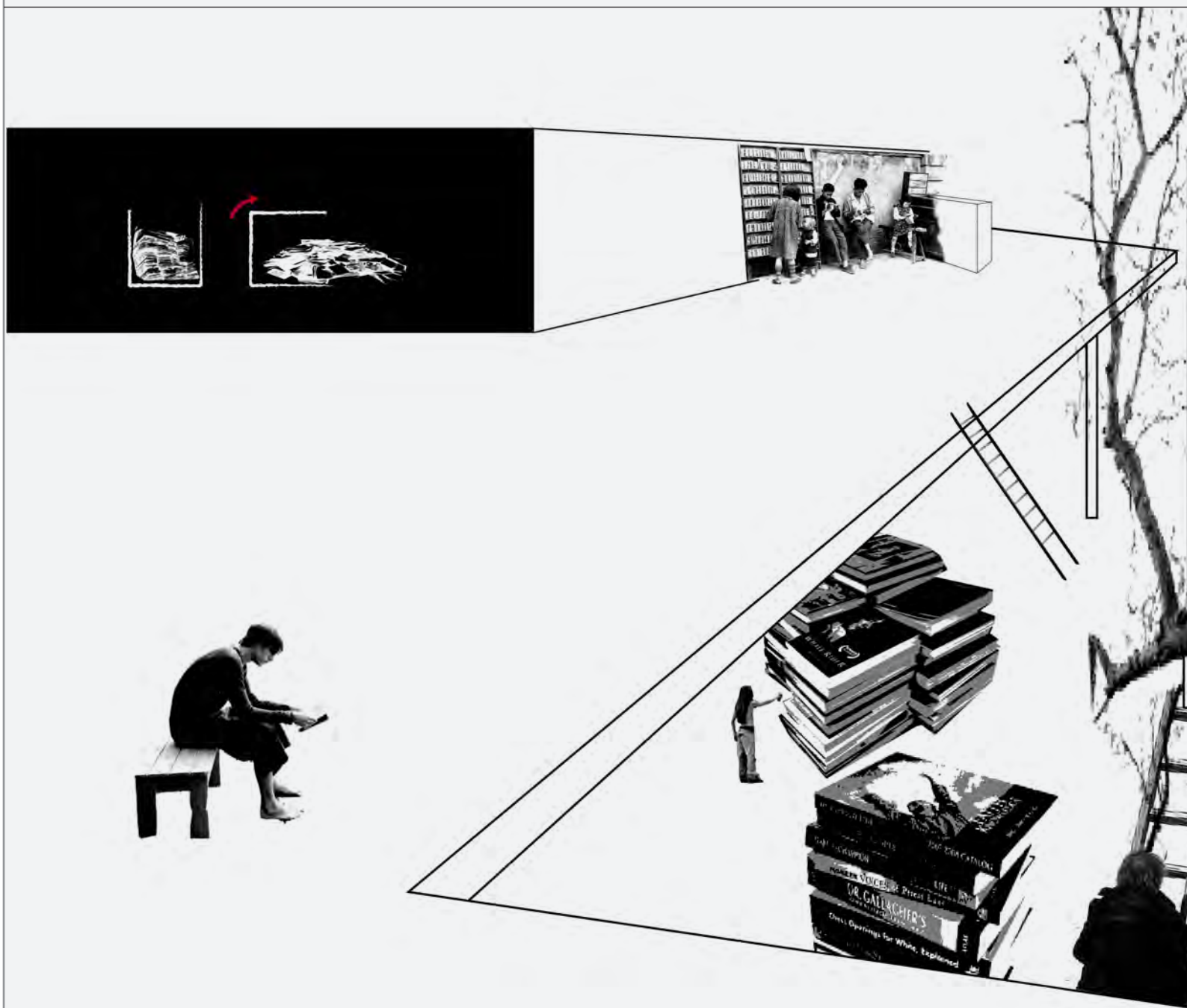




STUDY MODELS



This collage shows a ideal space people can rea, play or discard books. Books here are no longer books but a kind of material. A place surrounding by lot of piles of books offers people not a library but also a playground.



24-hours USED BOOKS LIBRARY