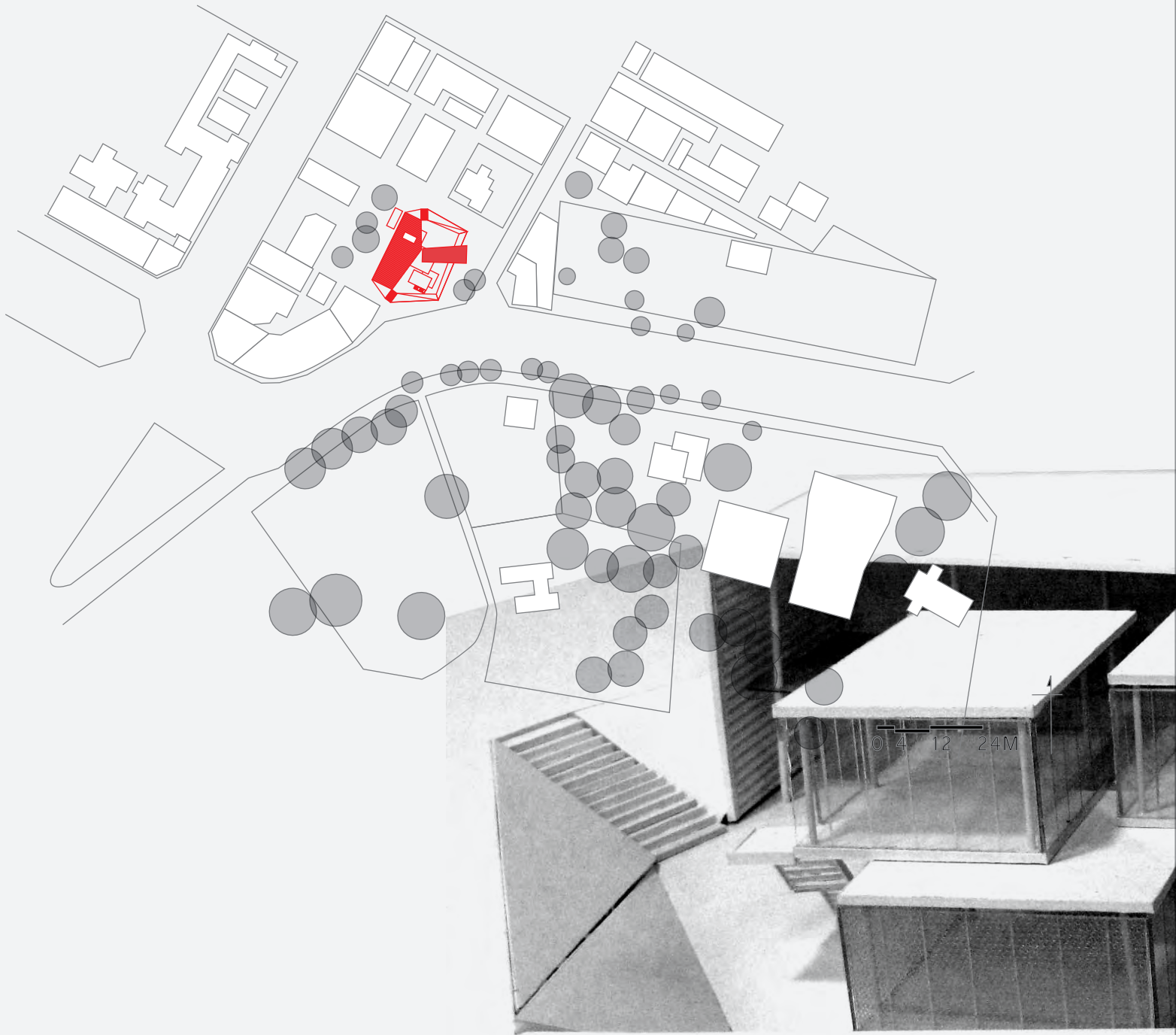


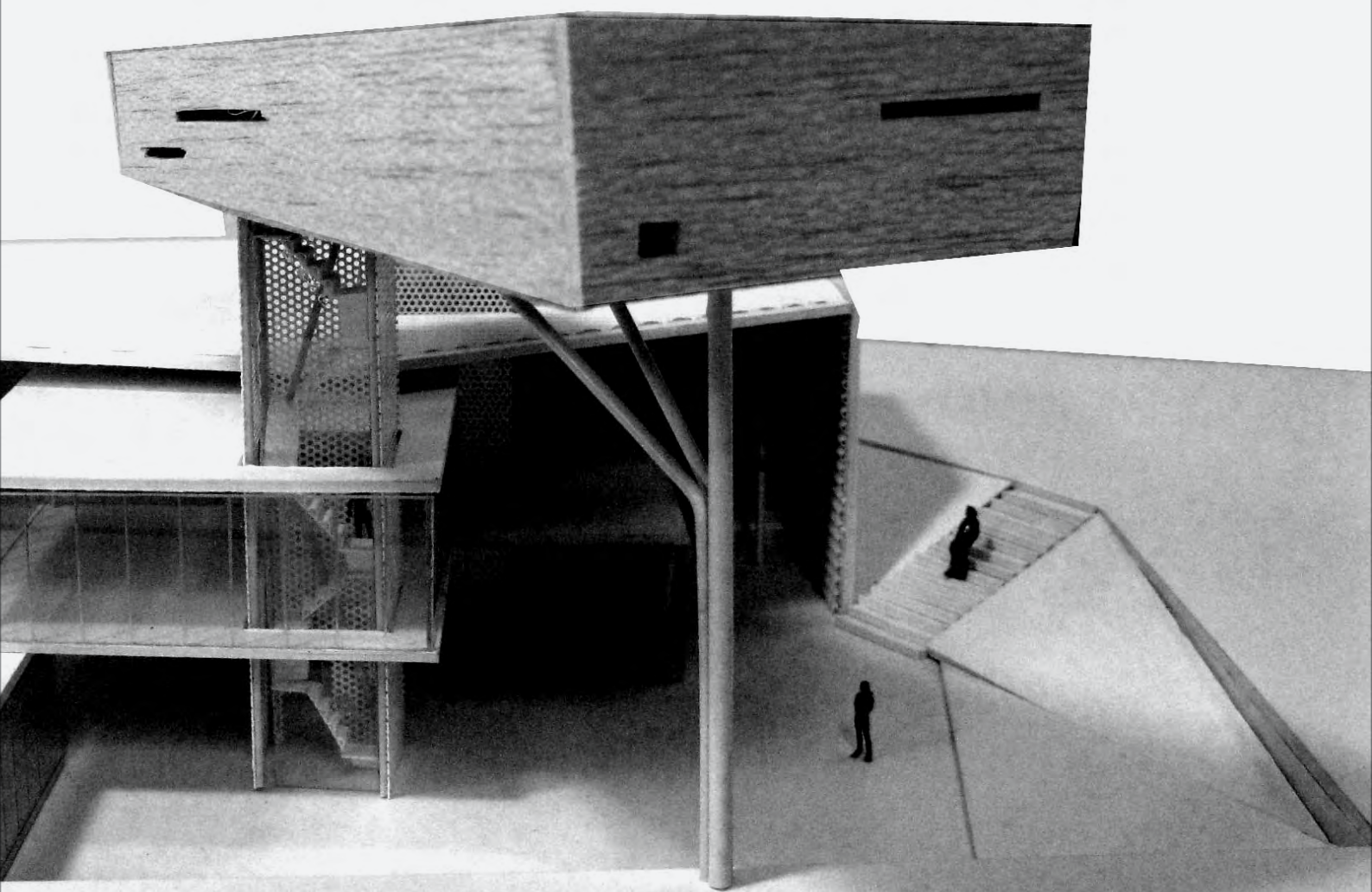


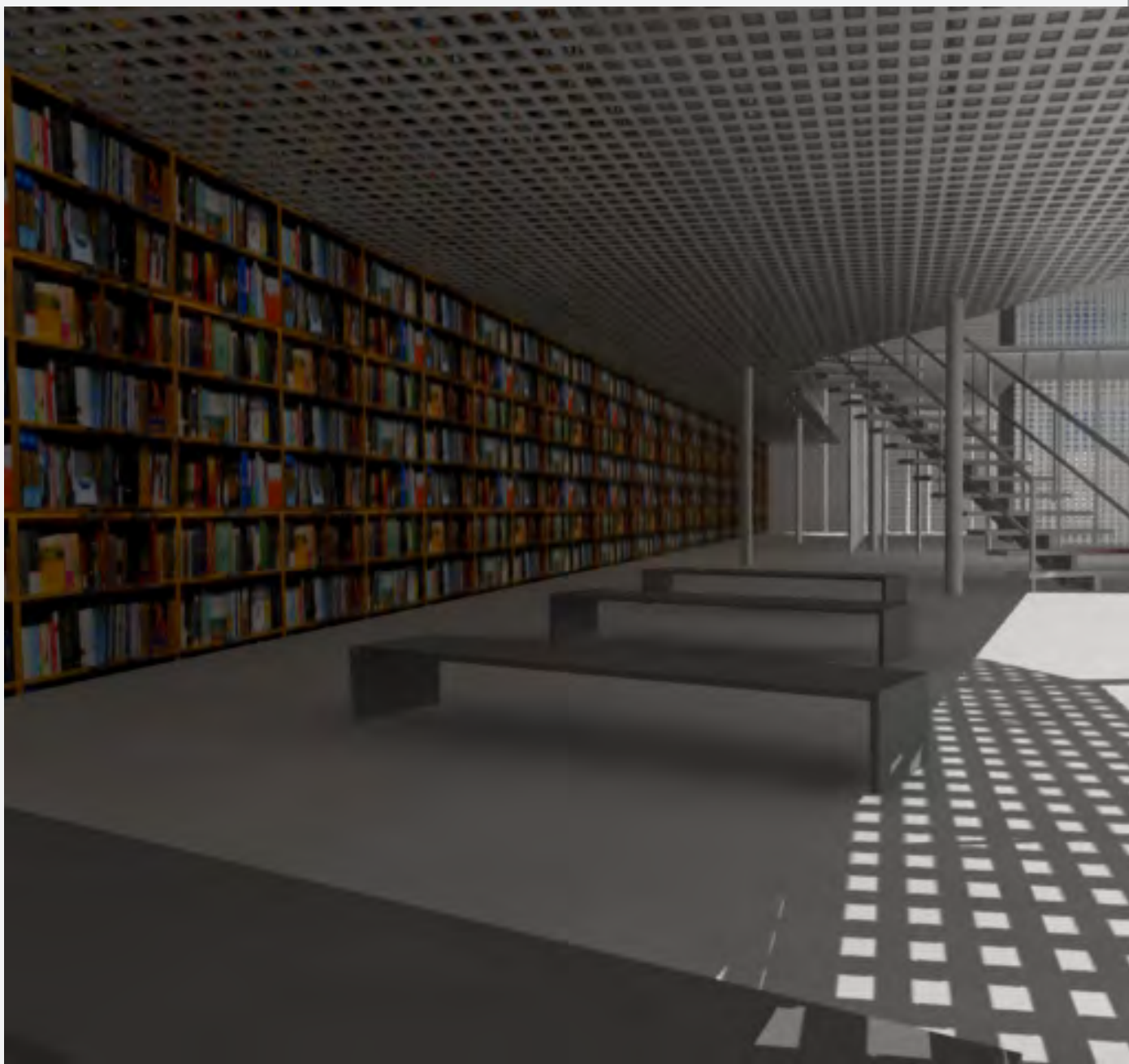
A OPEN LIBRARY SPACE FOR EXCHANGING USED BOOKS LIKE USED BOOKS VENDER BEFORE COULD GIVE PEOPLE A CASUALLY READING. AND THERE IS NO BOUNDRY FOR A LIBRARY. YOU DON'T NEED " GO TO" LIBRARY. INSTEAD, YOU CAN GO THROUGH HERE LIKE PARKS NEAR YOUR HOUSE.

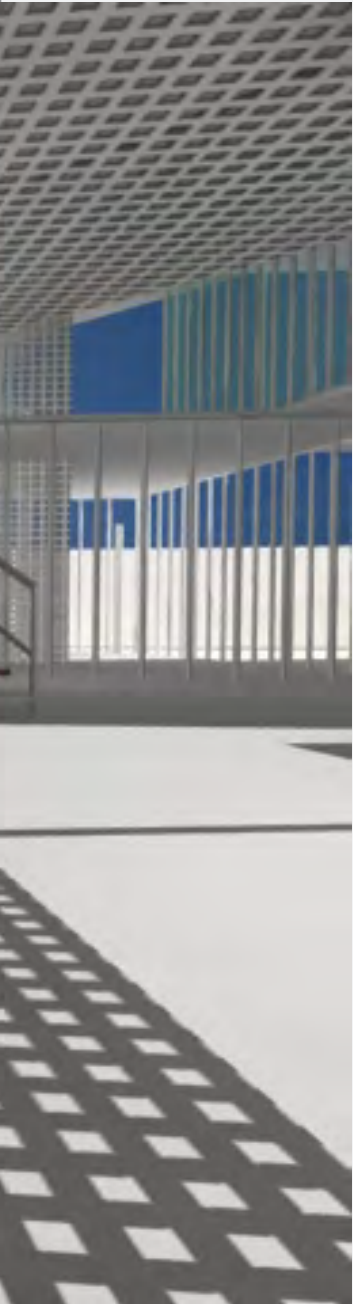


# MODEL 2





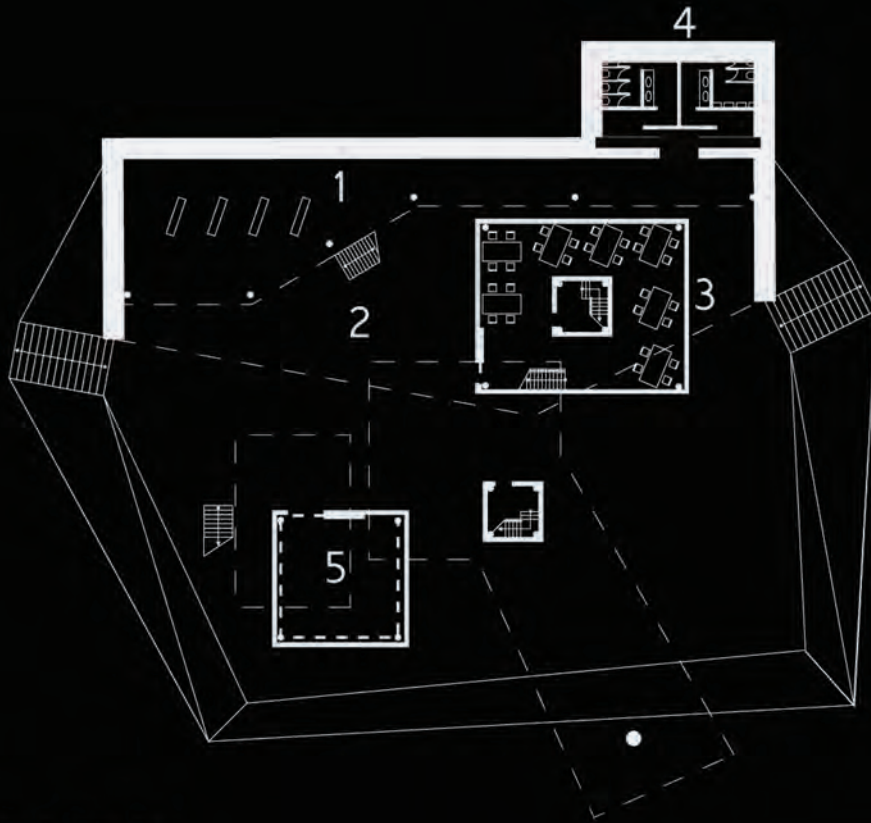




lower floor



A OPEN LIBRARY SPACE FOR EXCHANGING USED BOOKS LIKE USED BOOKS VENDER BEFORE COULD GIVE PEOPLE A CASUALLY READING. AND THERE IS NO BOUNDRY FOR A LIBRARY. YOU DON'T NEED " GO TO" LIBRARY. INSTEAD, YOU CAN GO THROUGH HERE LIKE PARKS NEAR YOUR HOUSE.



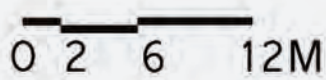
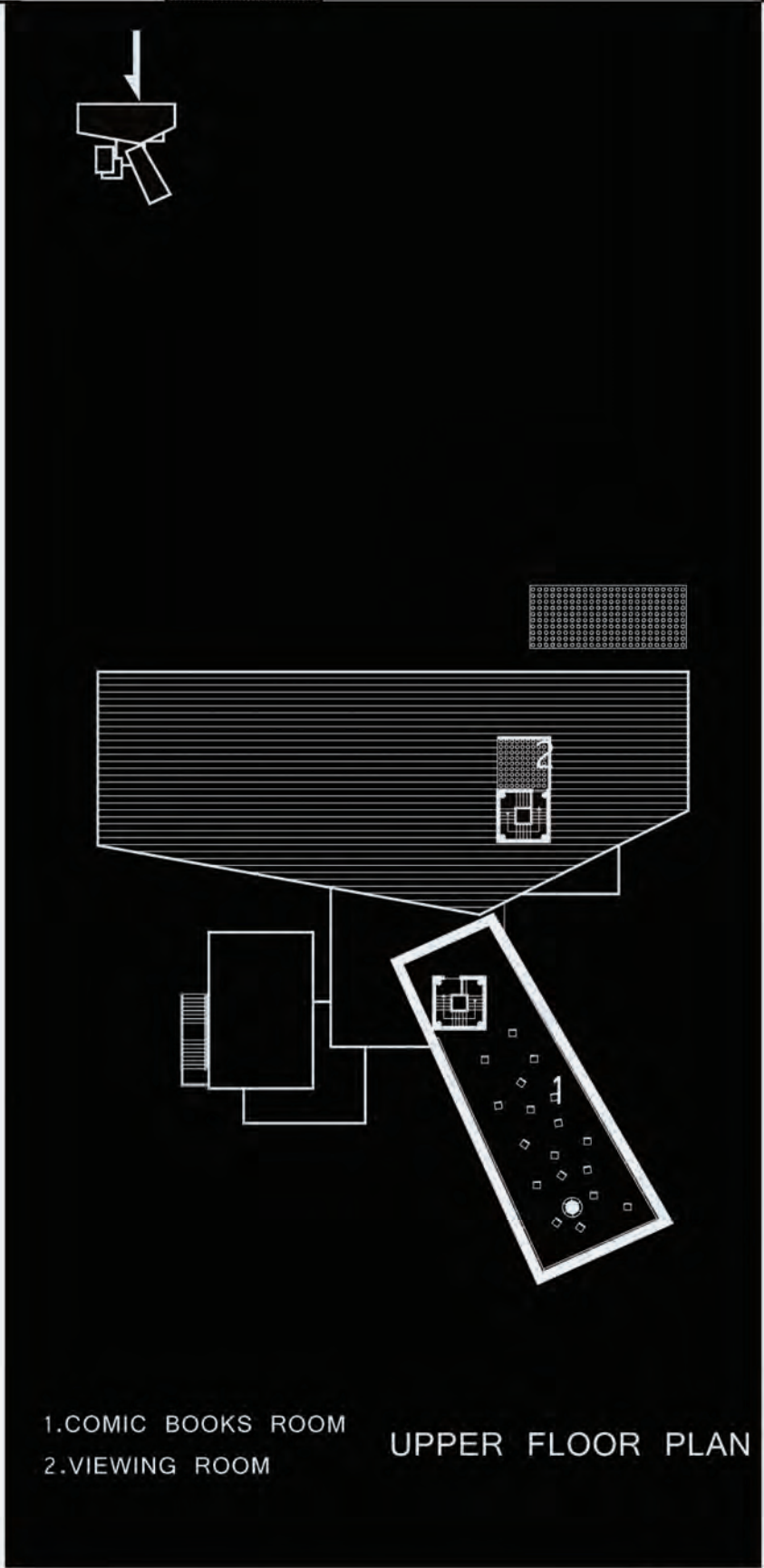
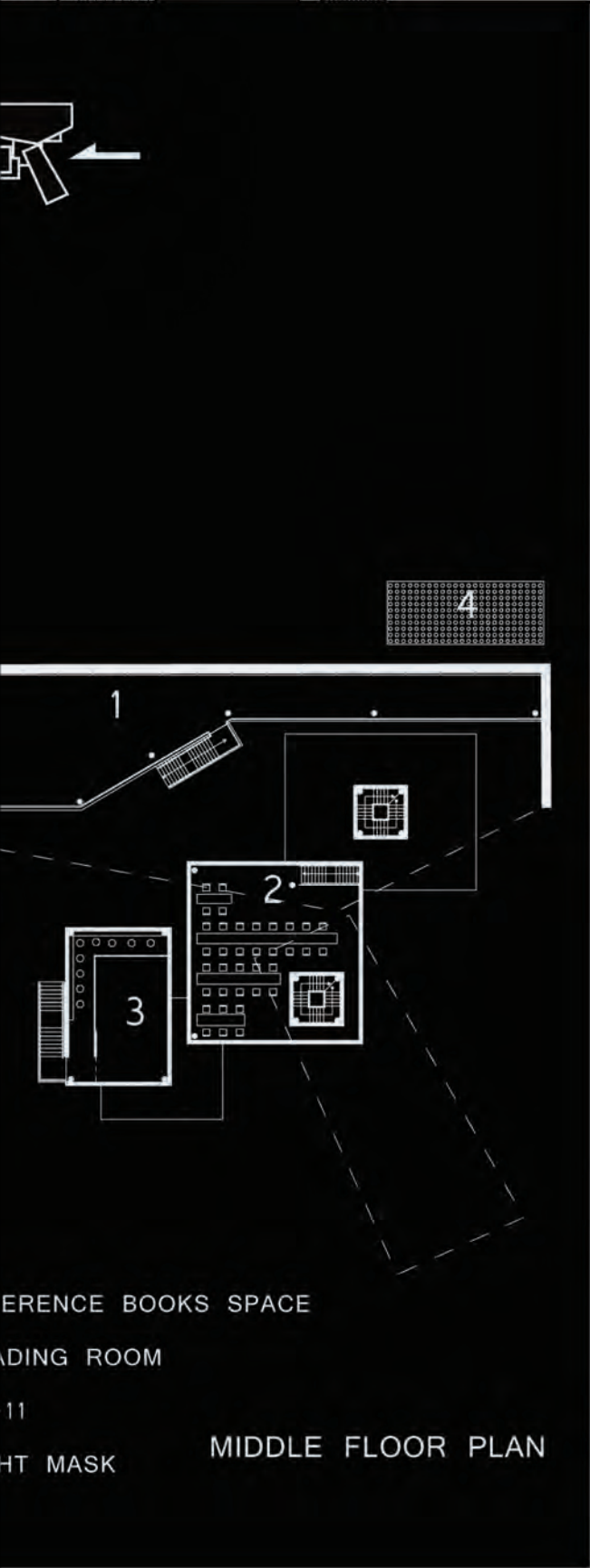
- 1. REFERENCE BOOKS SPACE
- 2. STACKING SQUARE
- 3. READING ROOM
- 4. LAVATORY
- 5. COUNTER & OFFICE

LOWER FLOOR PLAN

- 1. REF
- 2. REA
- 3. 7-
- 4. LIG



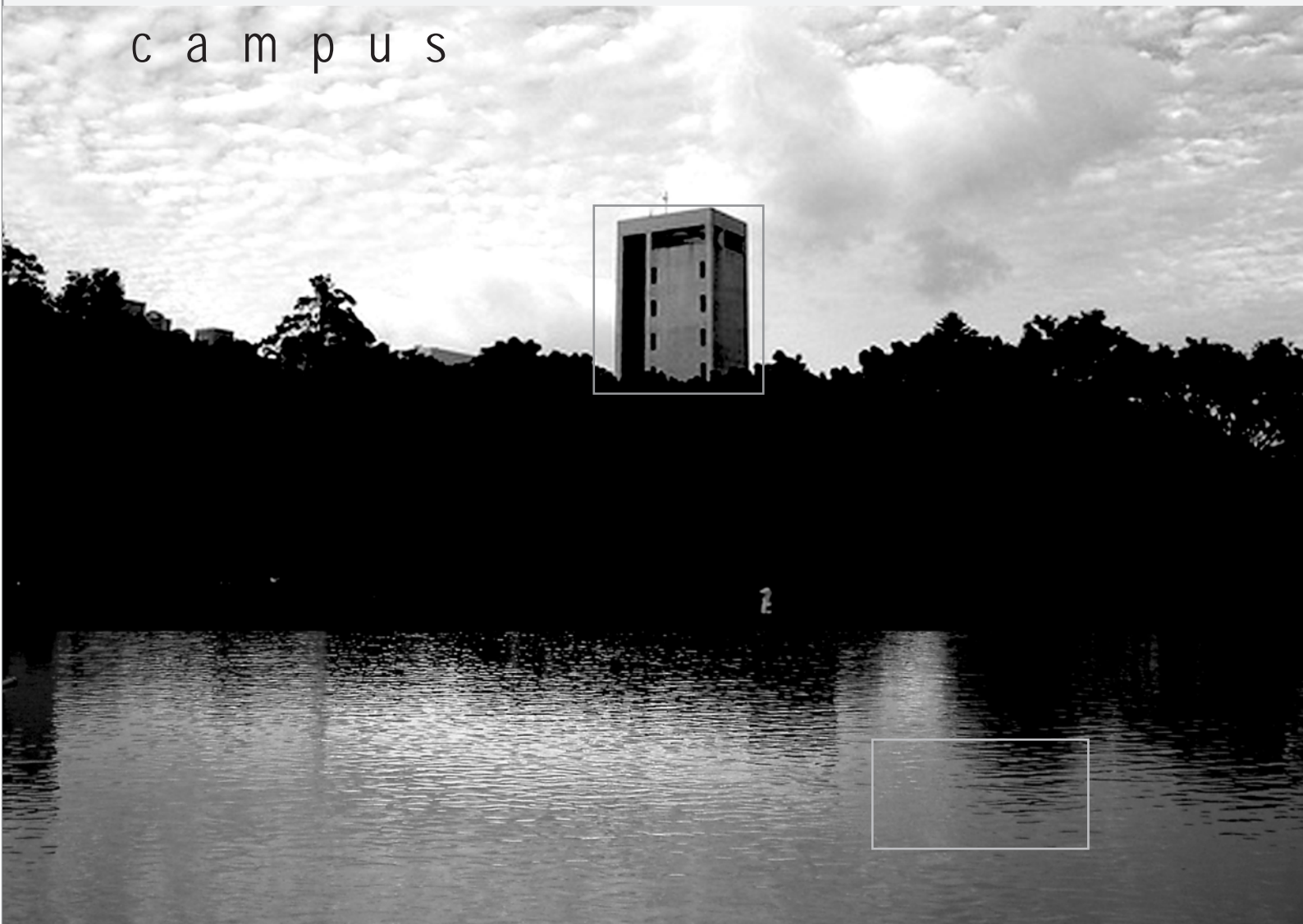
recycle





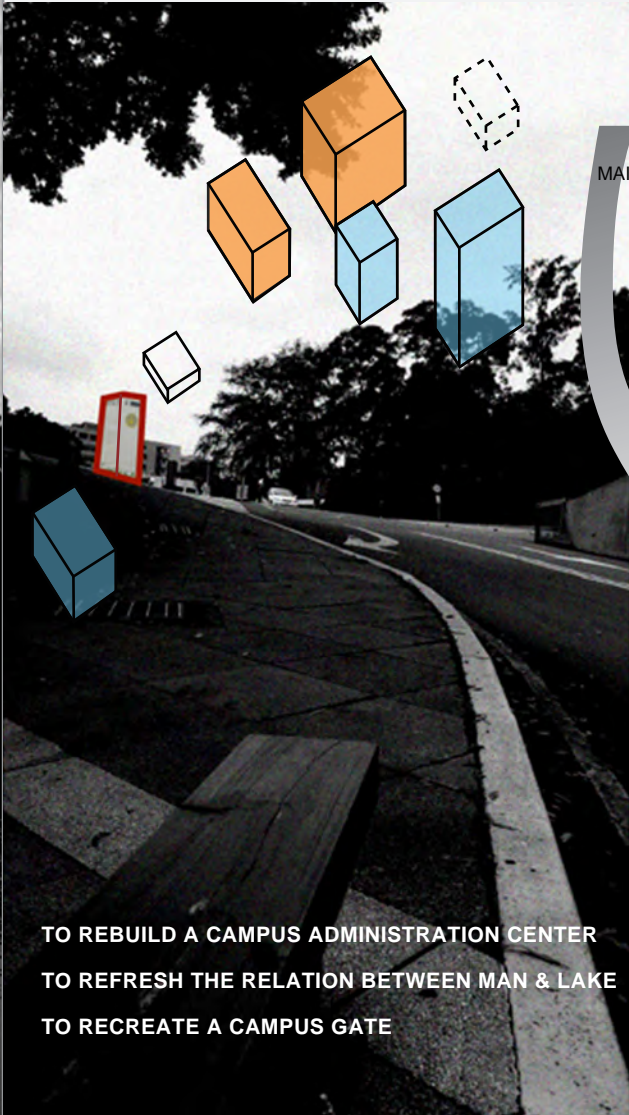
# chapter 5-1

## campus

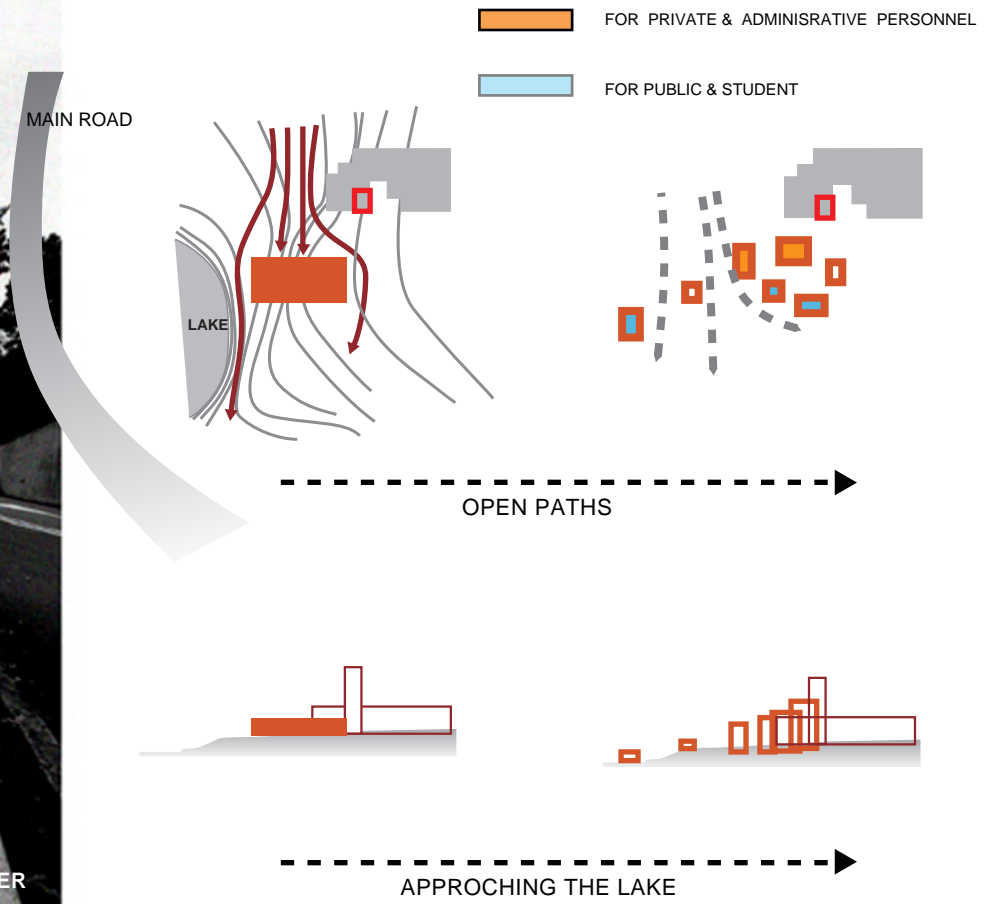


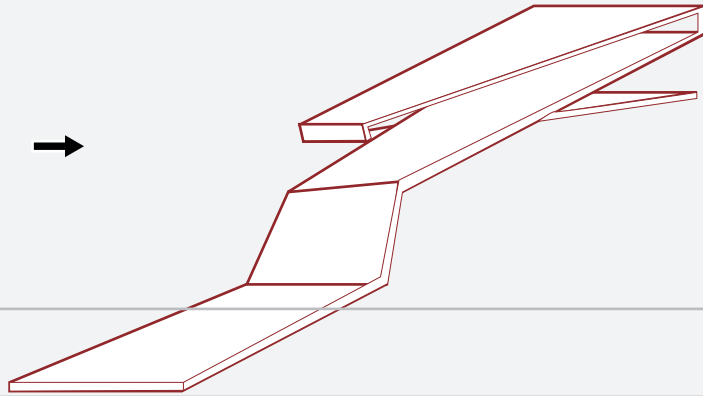
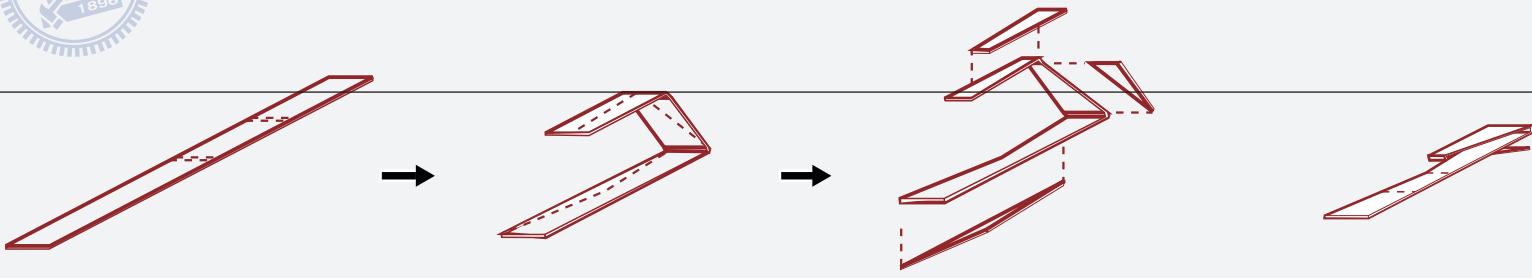
Campus for students is a place too familiar with to really recognize. Some thing nearby is the same thing we ignore.



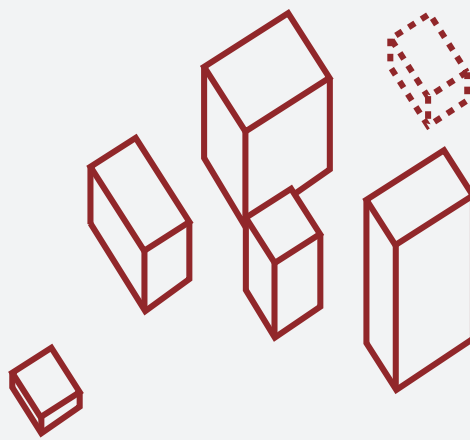
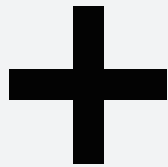


TO REBUILD A CAMPUS ADMINISTRATION CENTER  
TO REFRESH THE RELATION BETWEEN MAN & LAKE  
TO RECREATE A CAMPUS GATE

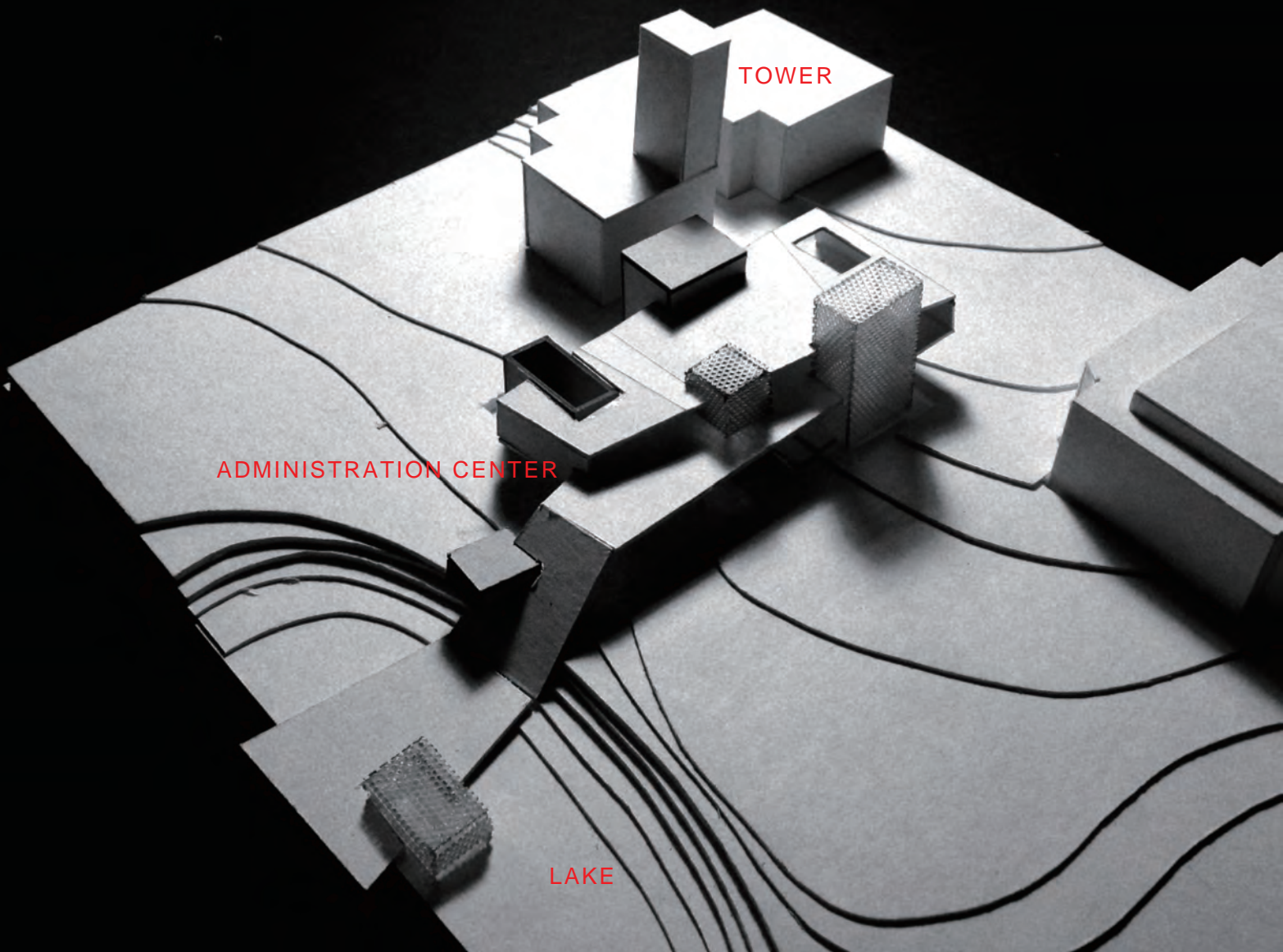




FOLDING



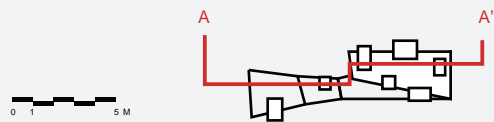
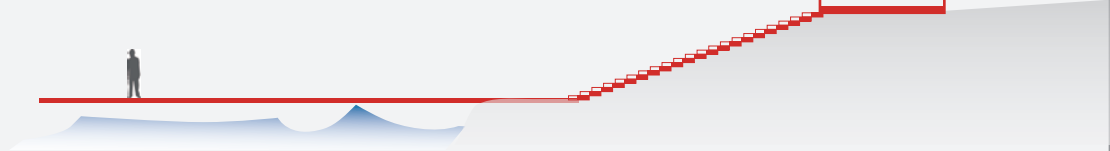
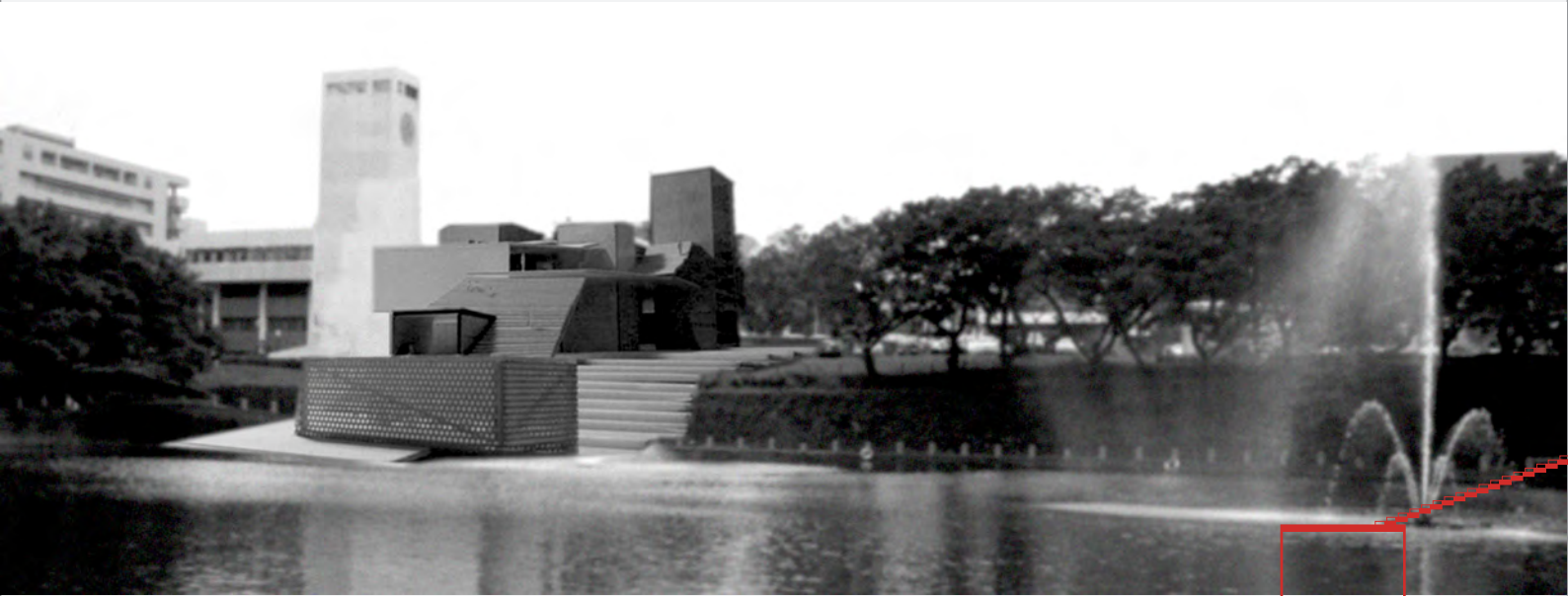
DISPERSION



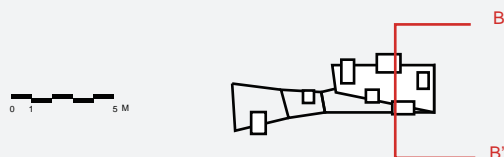
In order to respond to the tower, the center's vertical circulation and main building are composed of the form of tower. And the folding is a deck stretching into the lake.

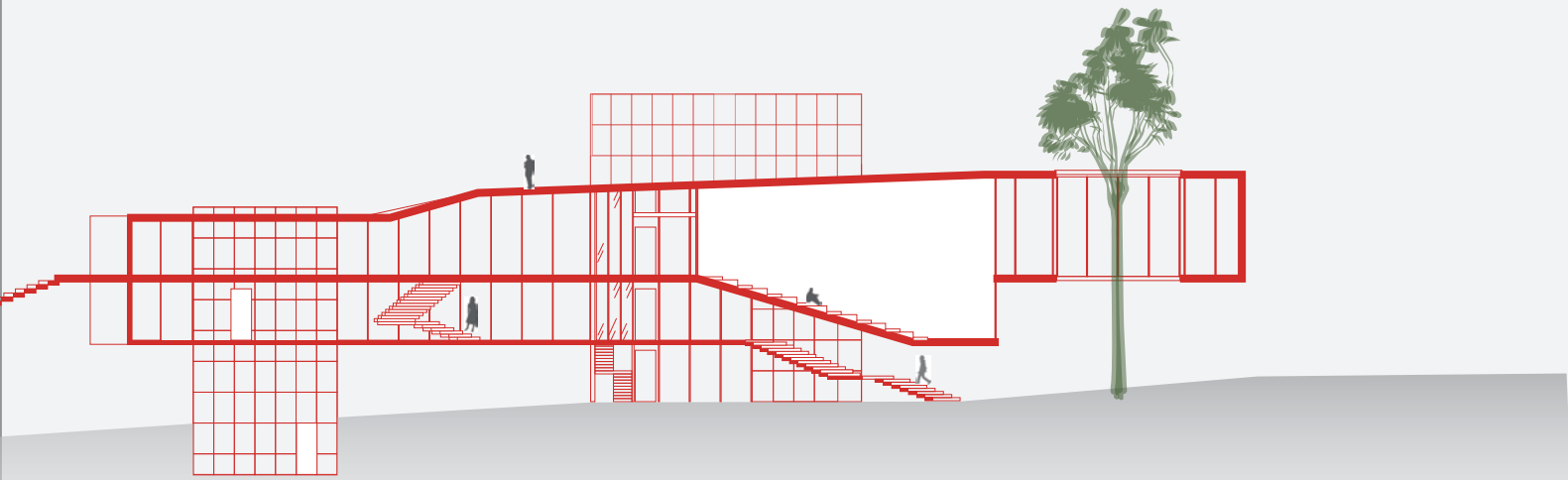


## CAMPUS ADMINISTRATION CENTER

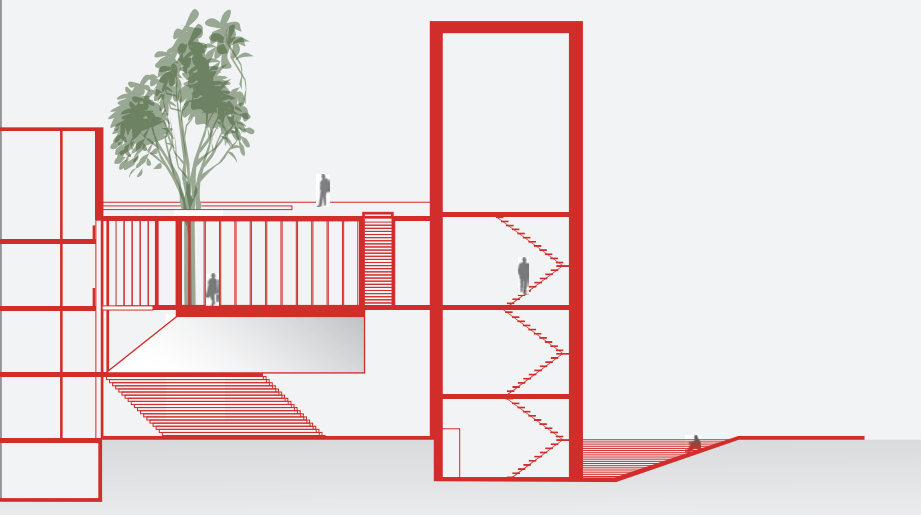


CAMPUS IS A MICRO SOCIETY FOR STUDENTS. NOT ONLY LOCAL STUDENTS, BUT ALSO FOREIGN STUDENTS LIVE, LEARN AND PLAY HERE. IF THE ADMINISTRATION CENTER COULD BE A MULTI-CULTURE CENTER STIMULATING THE INTERACTION AMONG OTHER COUNTRIES' EXCHANGE STUDENTS, WE CAN FIND SPACE'S OPPORTUNITIES FAR FROM JUST A TASK-PROCESSING STOP.

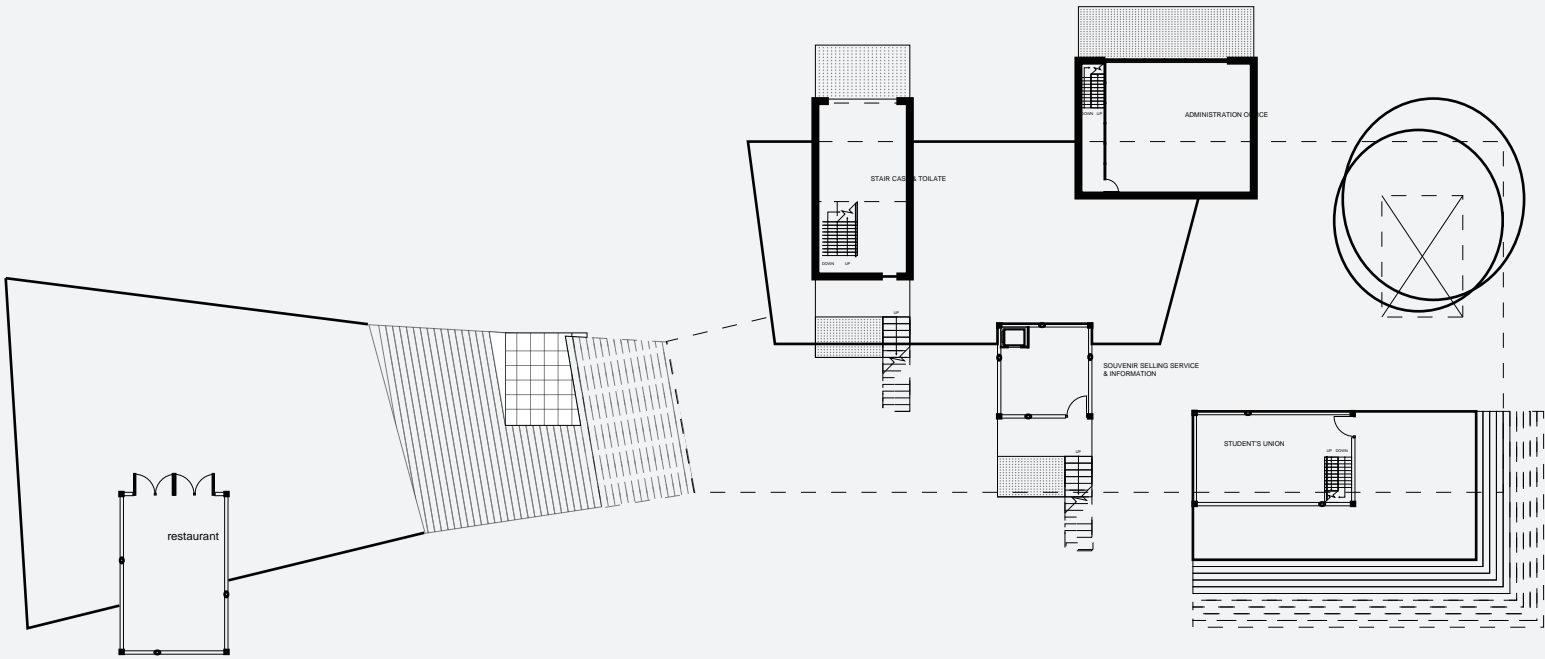




**SECTION A-A**

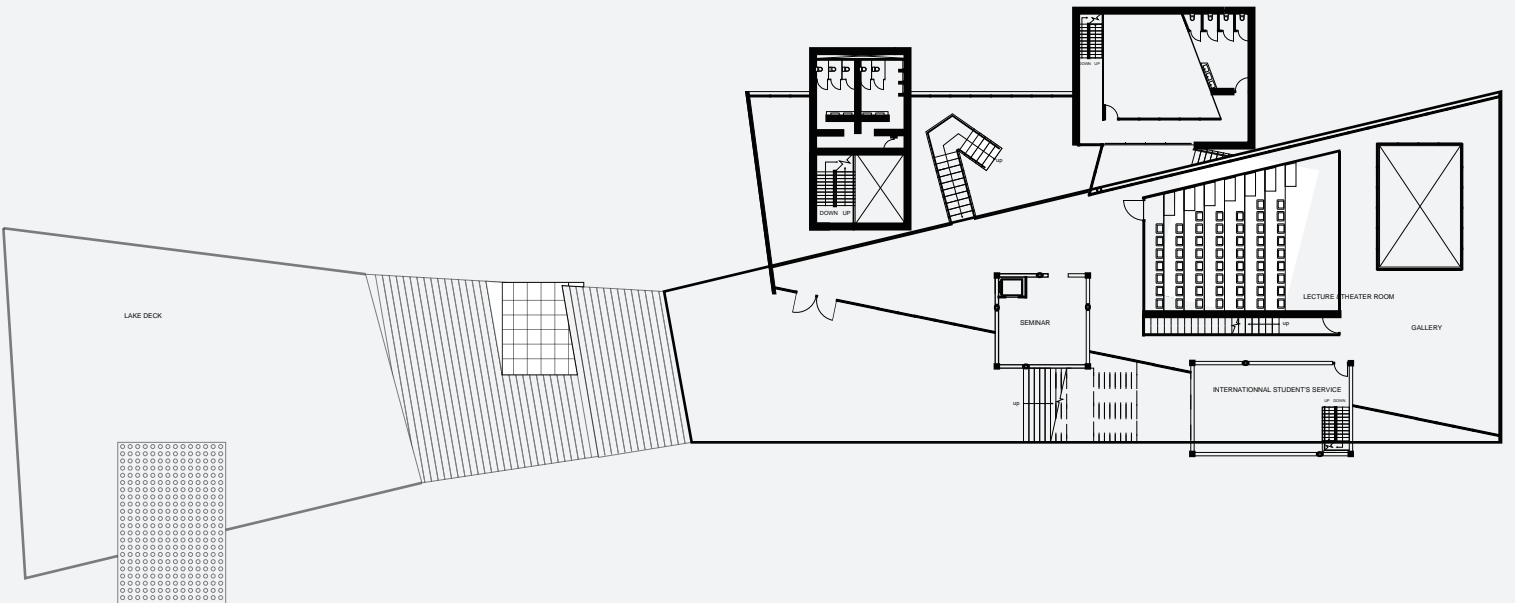


**SECTION B-B**



LOWER LEVEL FLOOR

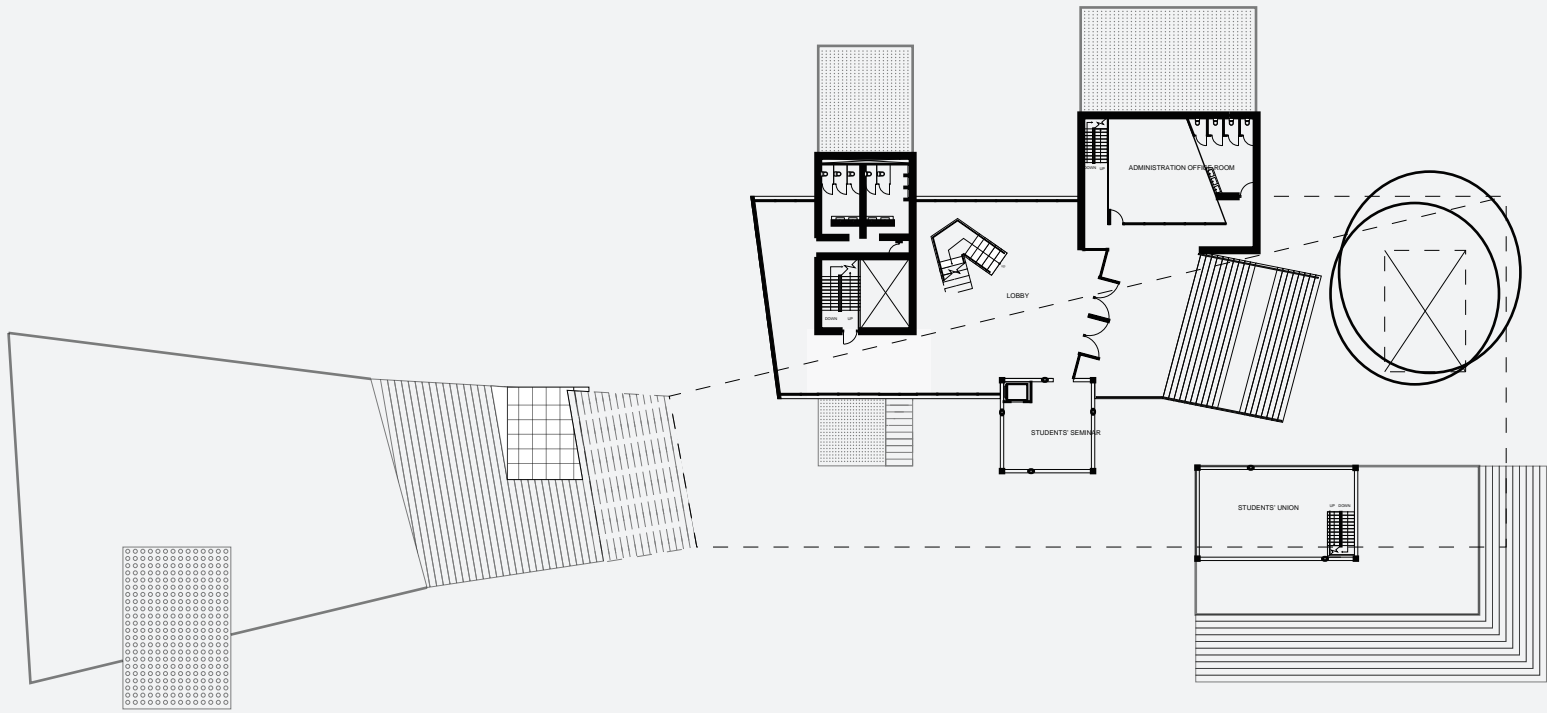
0 1 5 M



UPPER LEVEL FLOOR

0 1 5 M





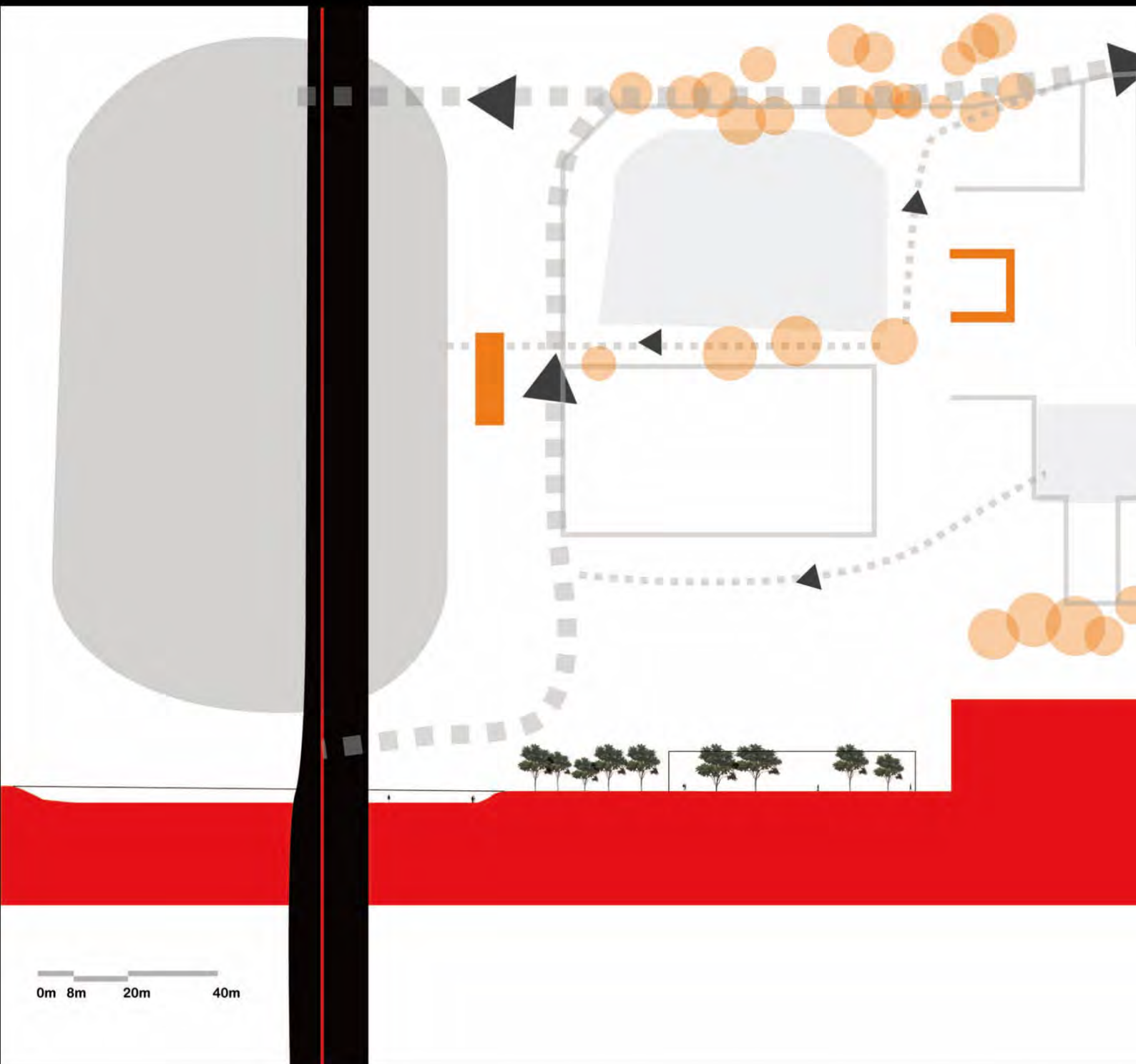
MIDDLE LEVEL FLOOR





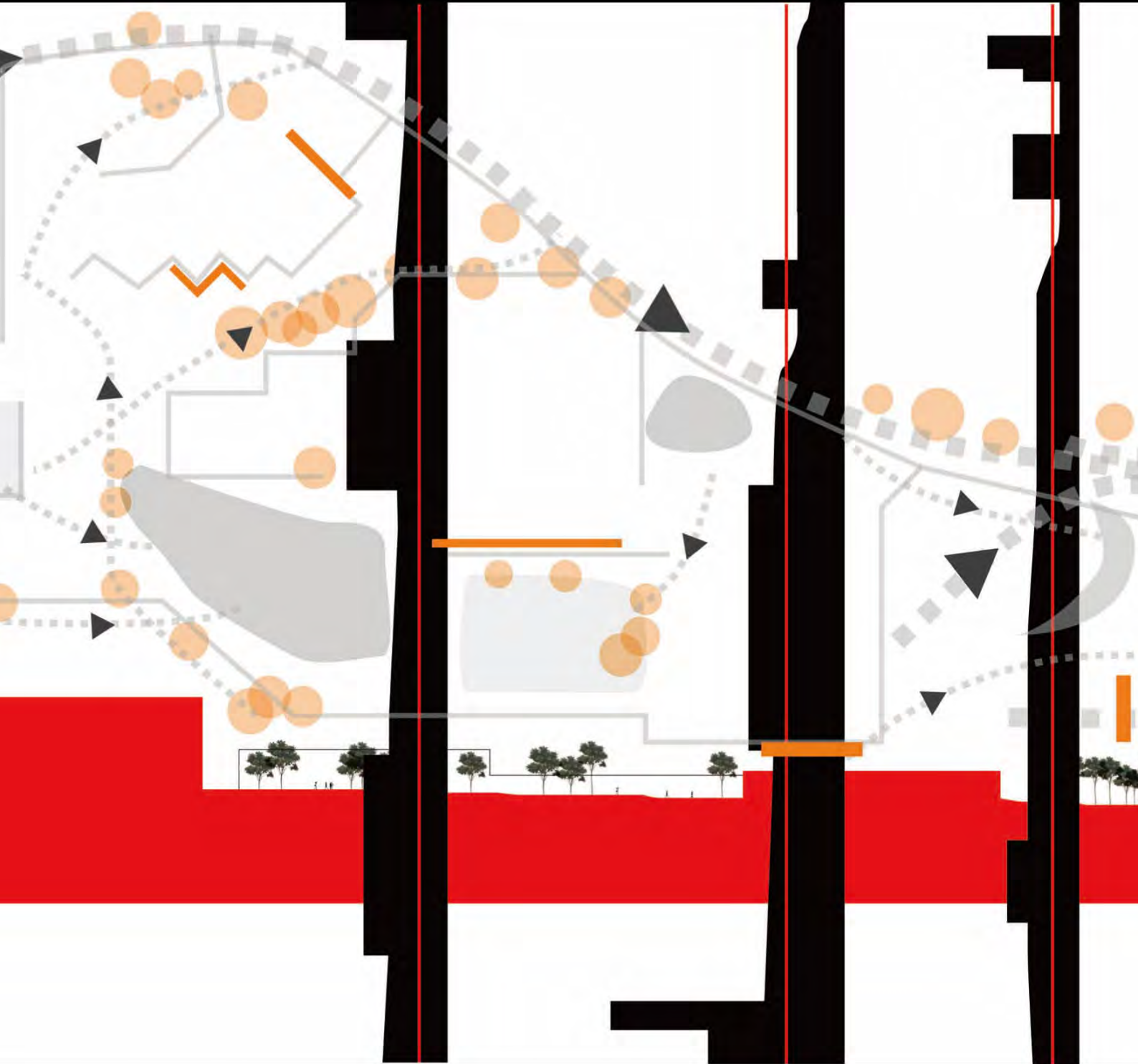
# chapter 5-2

## campus



CAMPUS' SPACE CAN CHANGE DURING THE RAINNY DAY. THE RAIN  
DIFFERENT PATHS FROM THE NORMAL. AND WE CHANGE OUR WAY  
THE PEDESTRIAN PATHS, AND SHELTERS DURING RAINNY DAY M

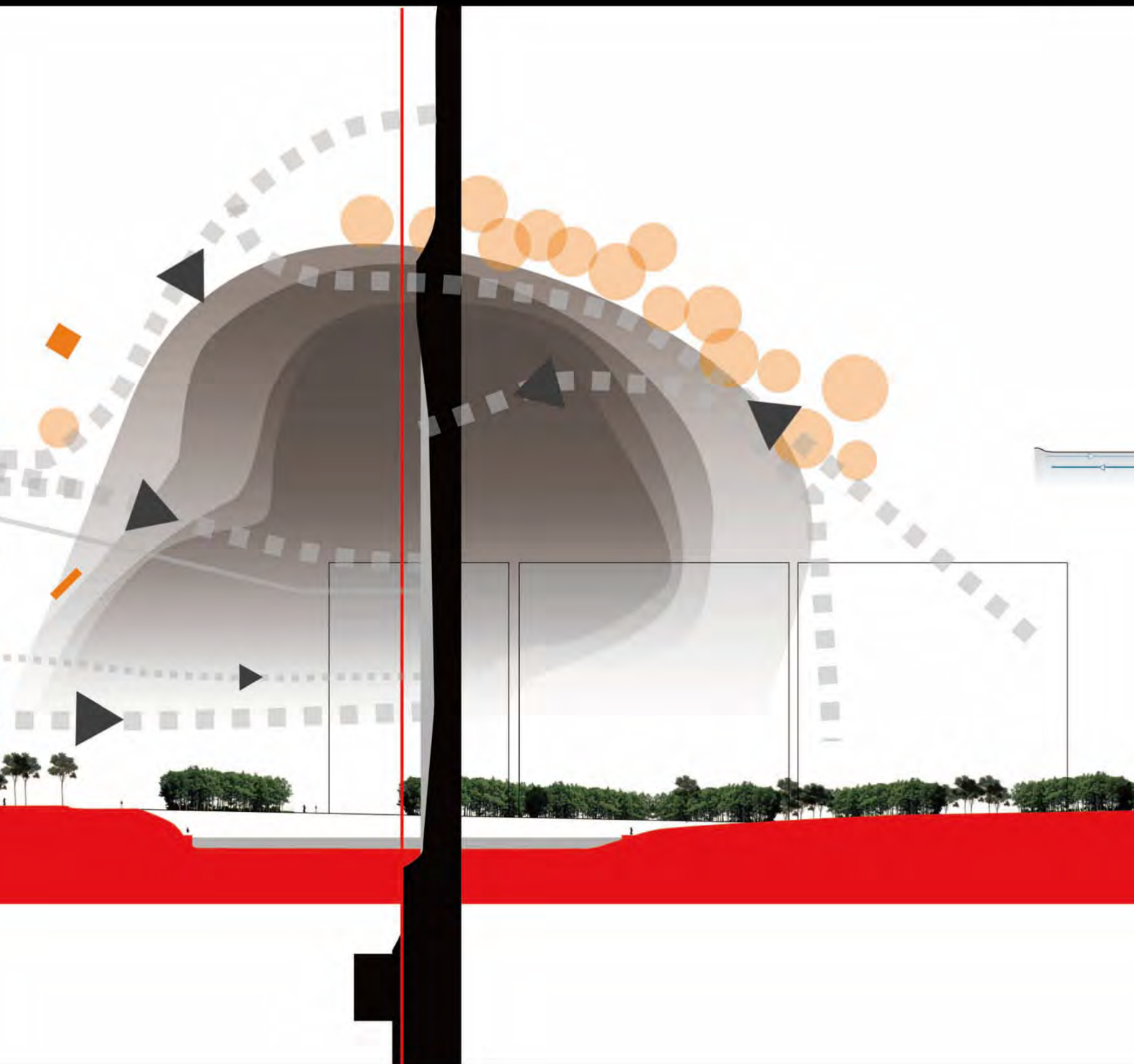




**WATER FLOWS AND ACCUMULATES THAT CREATES  
WALKING OR HIDING BEHAVIORS. THE RAIN PATHS,  
MAKE THE OTHER KIND OF CAMPUS SPACE.**

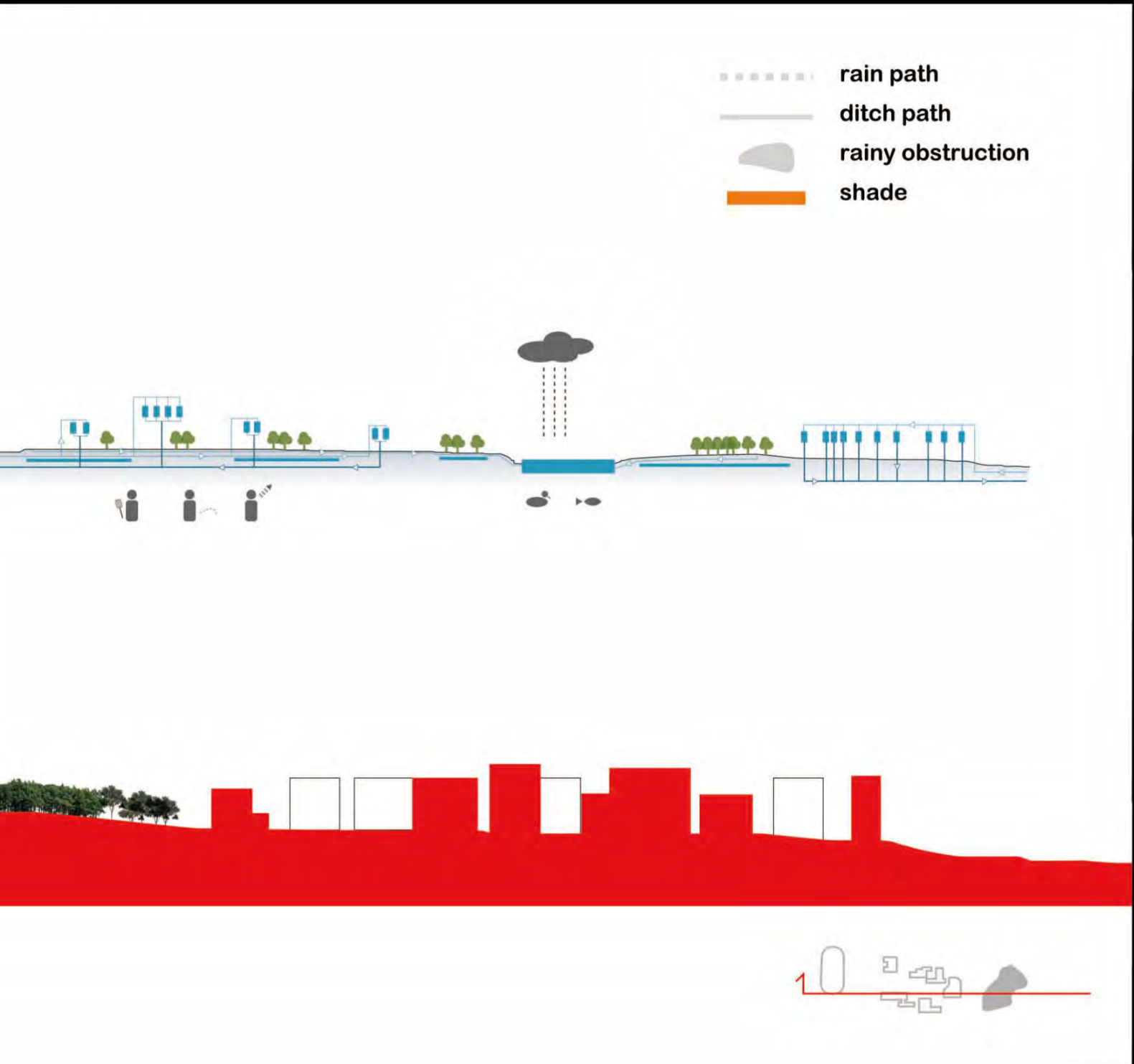


THE W  
TO LAK  
THE WA  
ACCUM



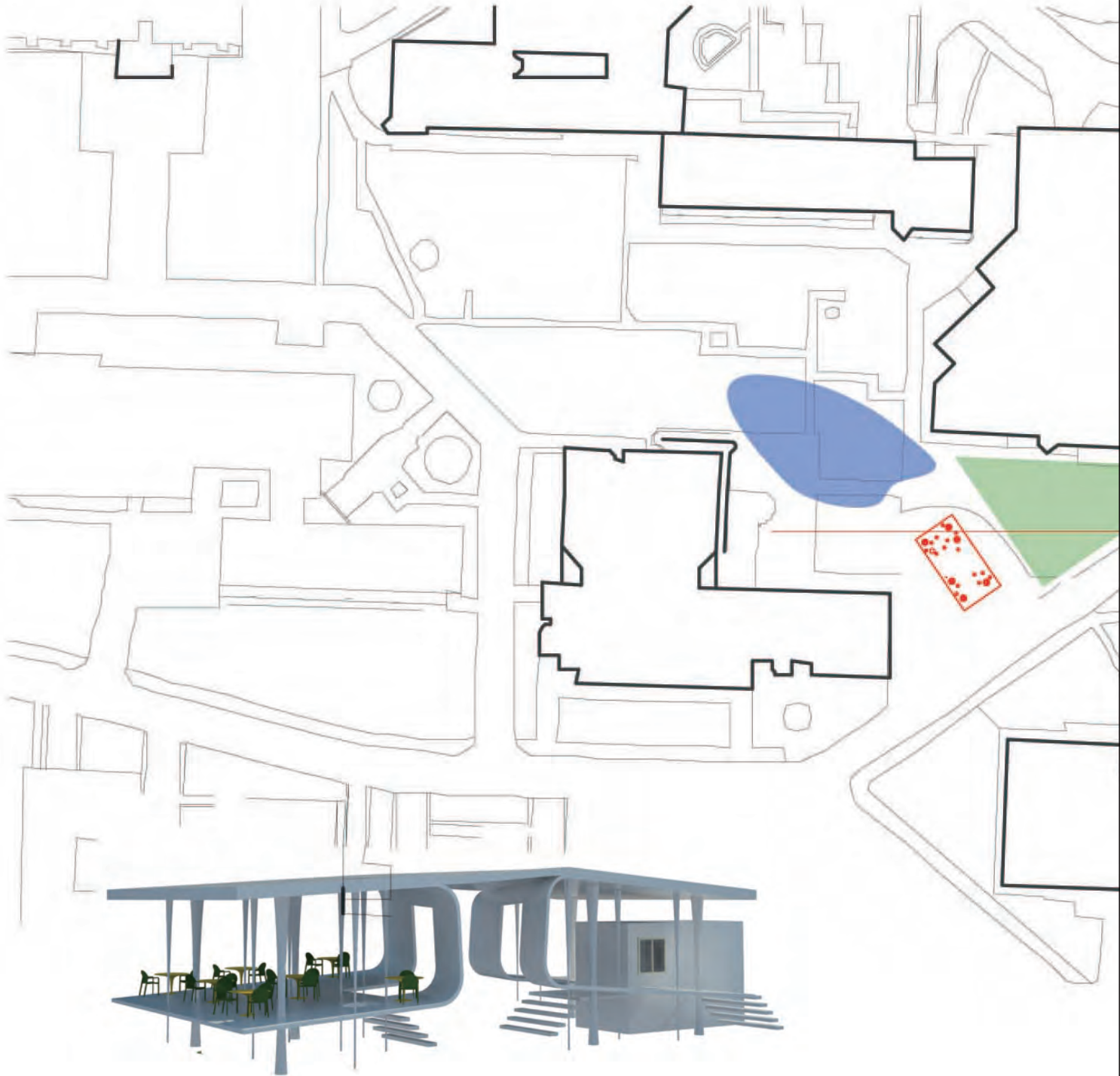


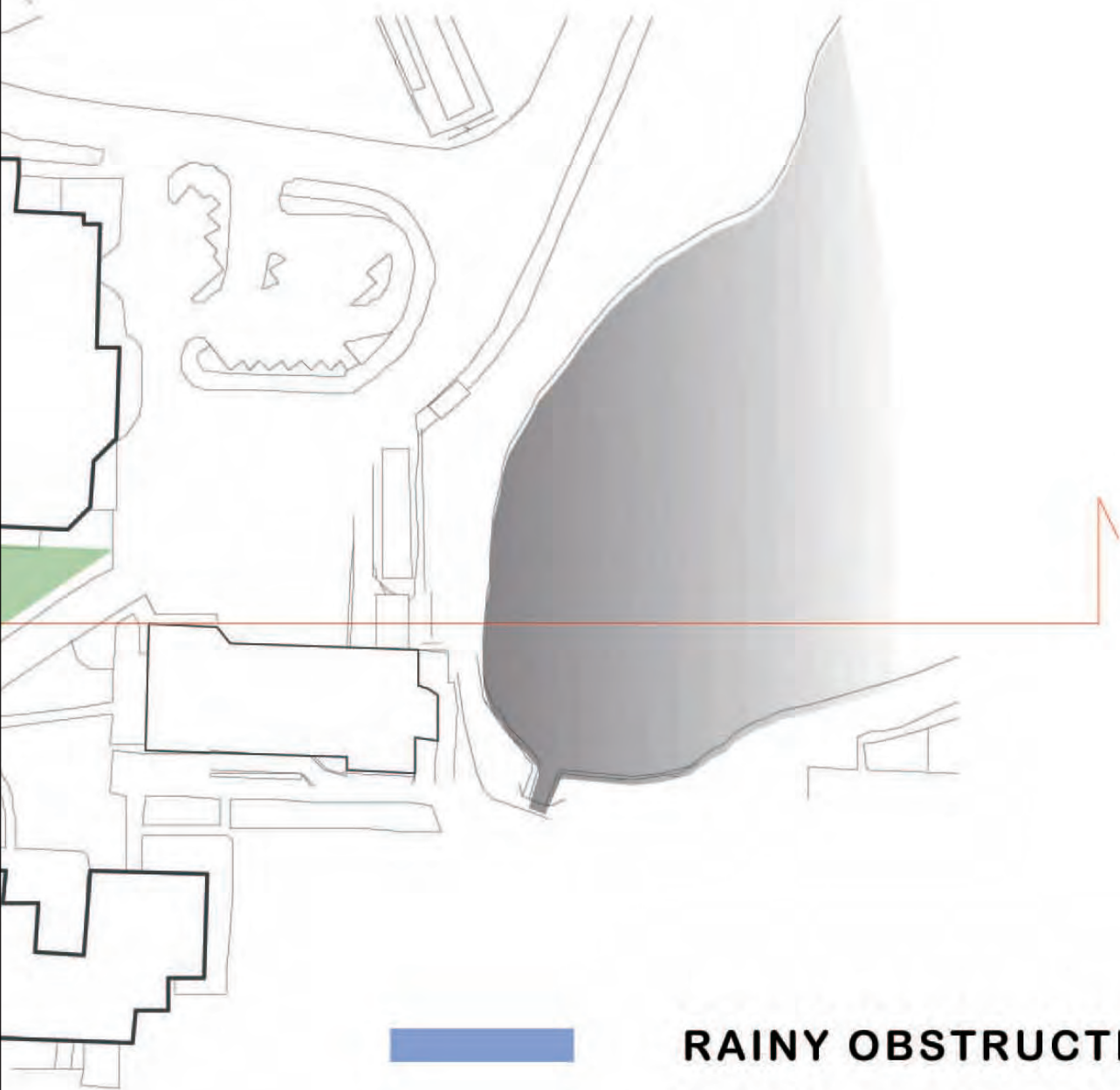
WATER CIRCULATES IN CAMPUS FROM RAIN, SCHOOL SEWAGE  
LIKE LINKING THE NATURE SYSTEM AND MAN MADE SYSTEM.  
WATER IS NOT ONLY FOR ONE WAY LOST, BUT ALSO COULD BE  
RECYCLED.





# SITE





**RAINY OBSTRUCTION**

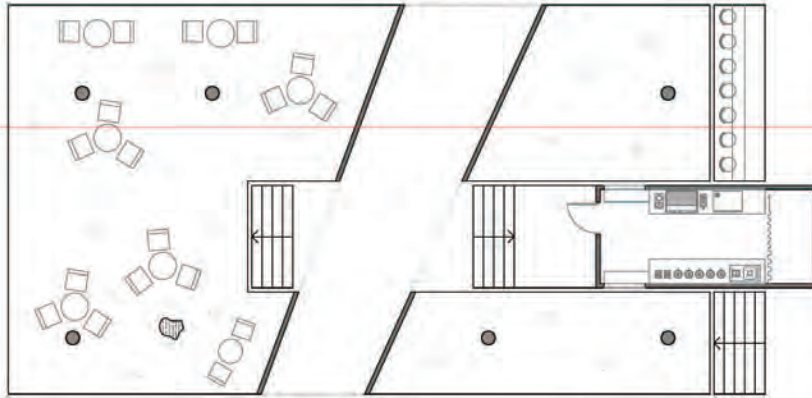


**SQUARE**

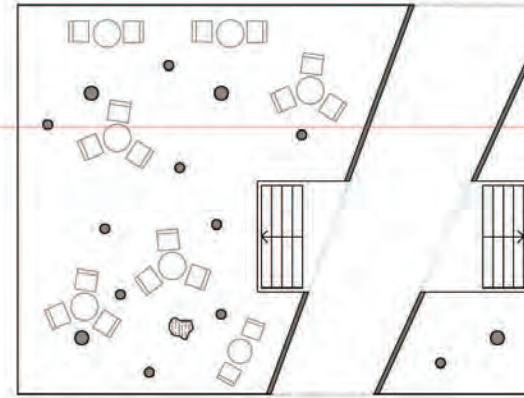




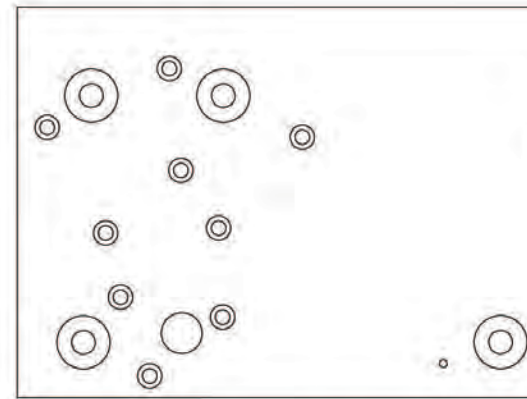
**A**



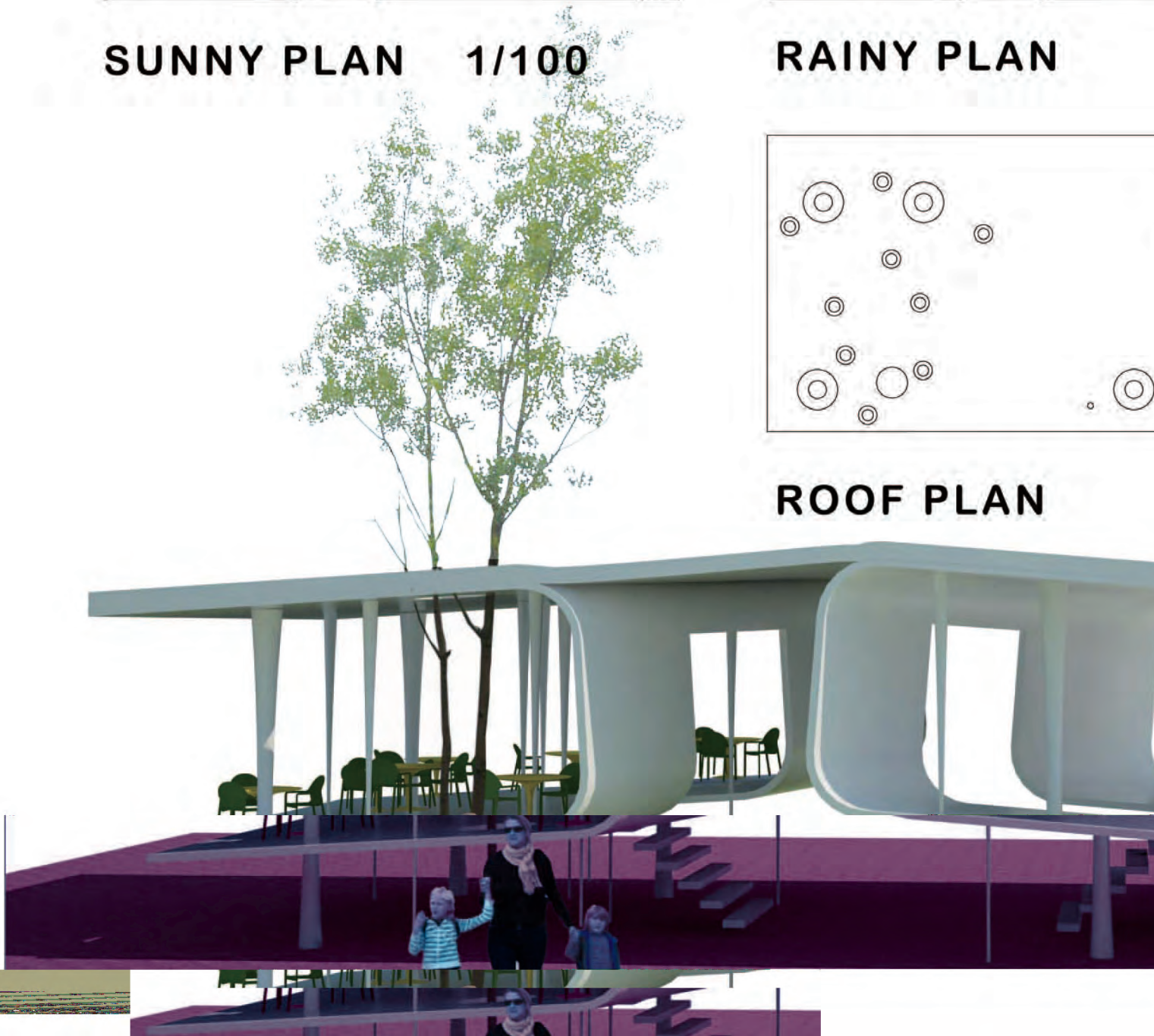
**SUNNY PLAN 1/100**

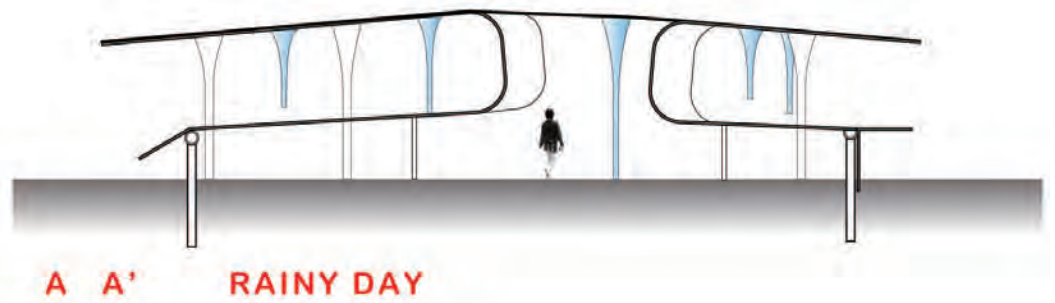
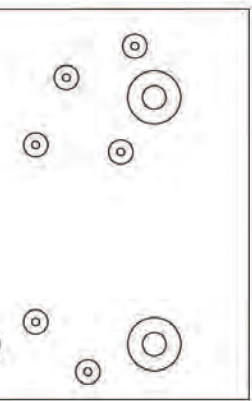
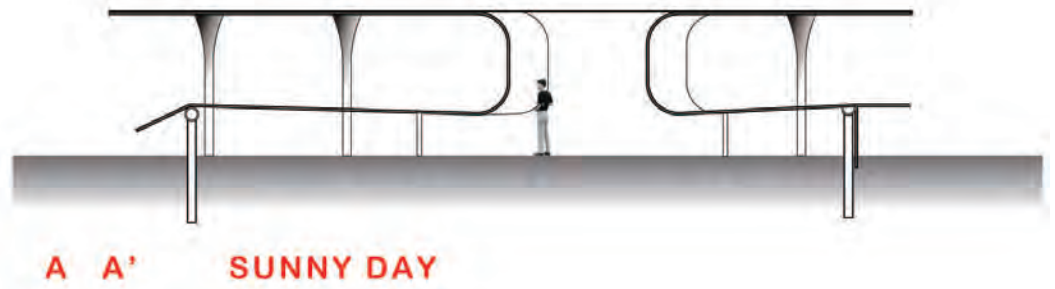
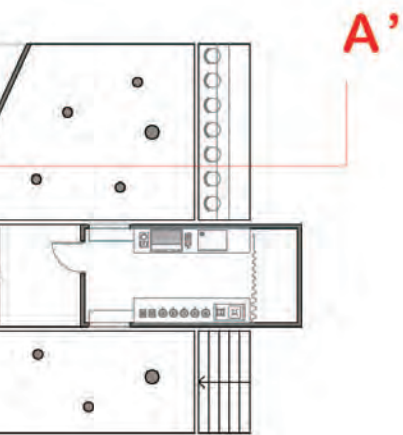


**RAINY PLAN**

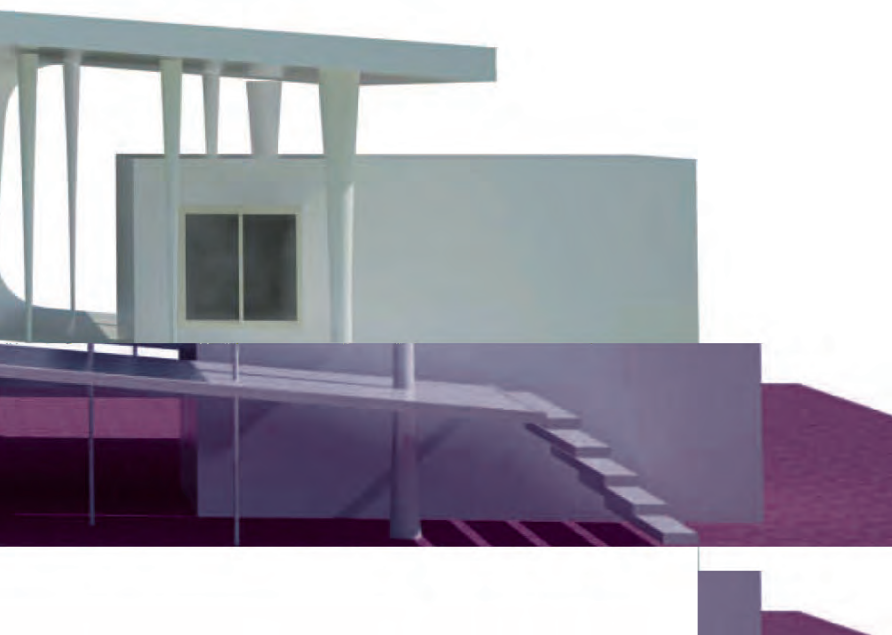


**ROOF PLAN**



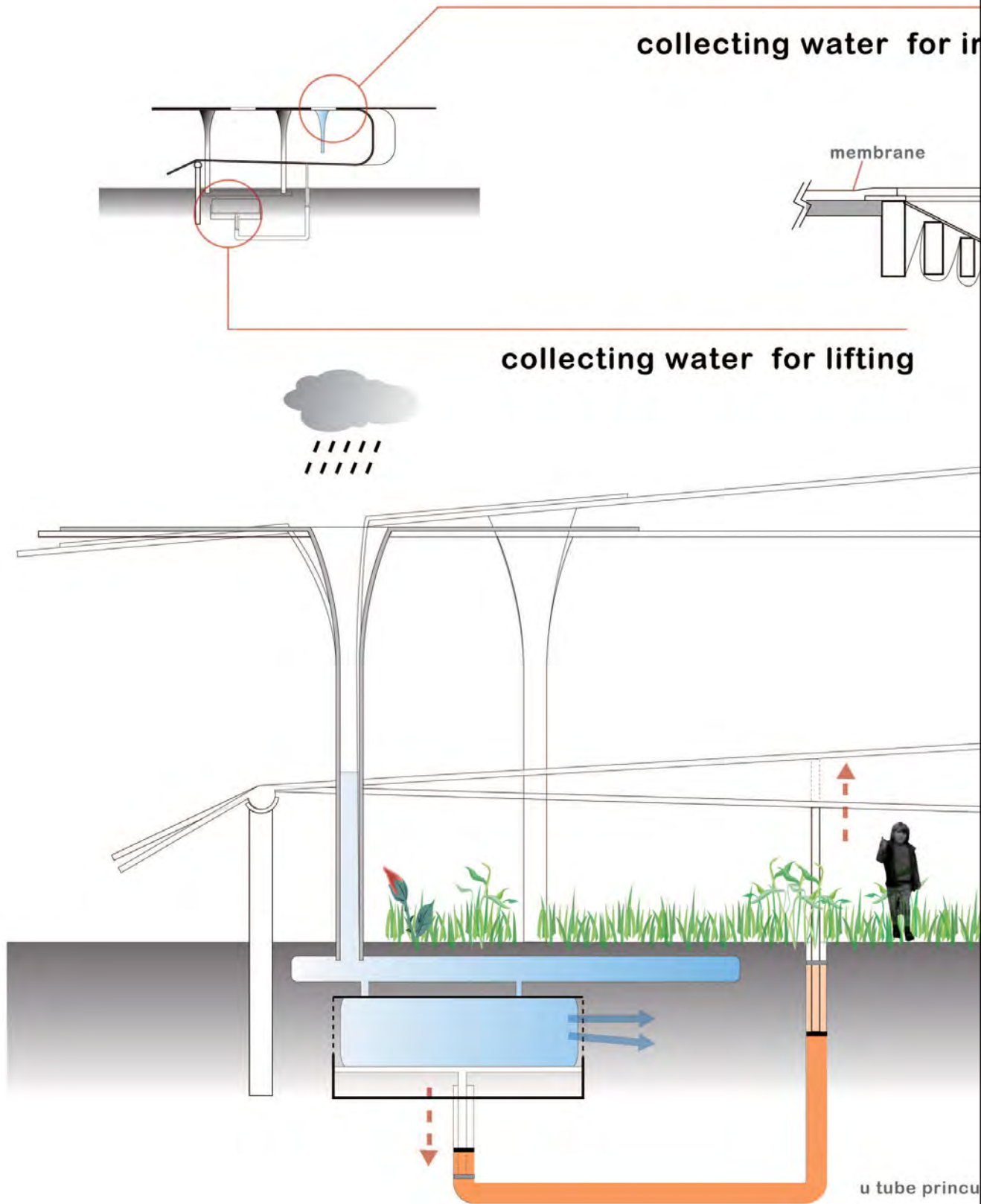


## SECTION 1/100





# MECHANISM OF WATER ABSORBING





# irrigation

