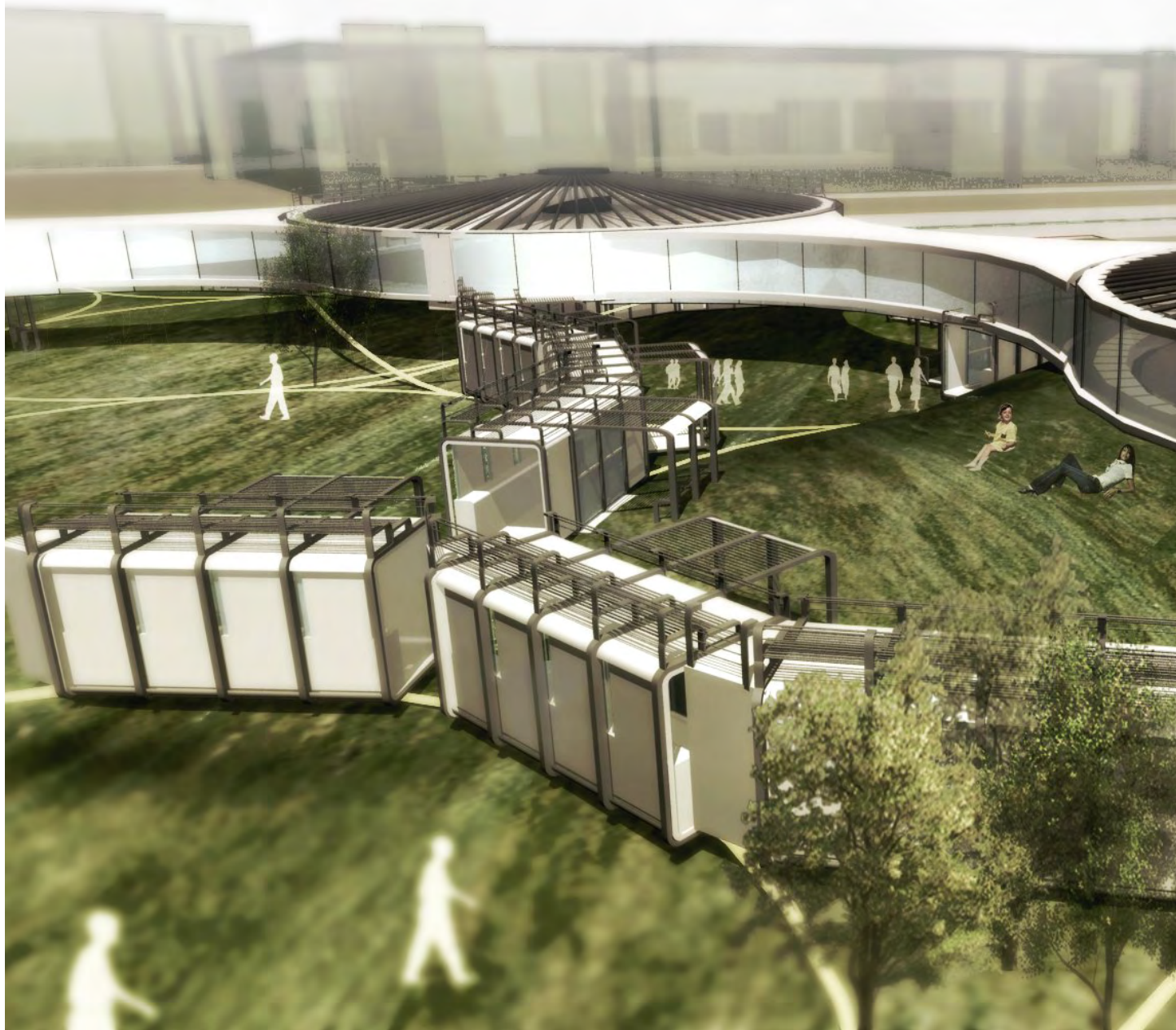
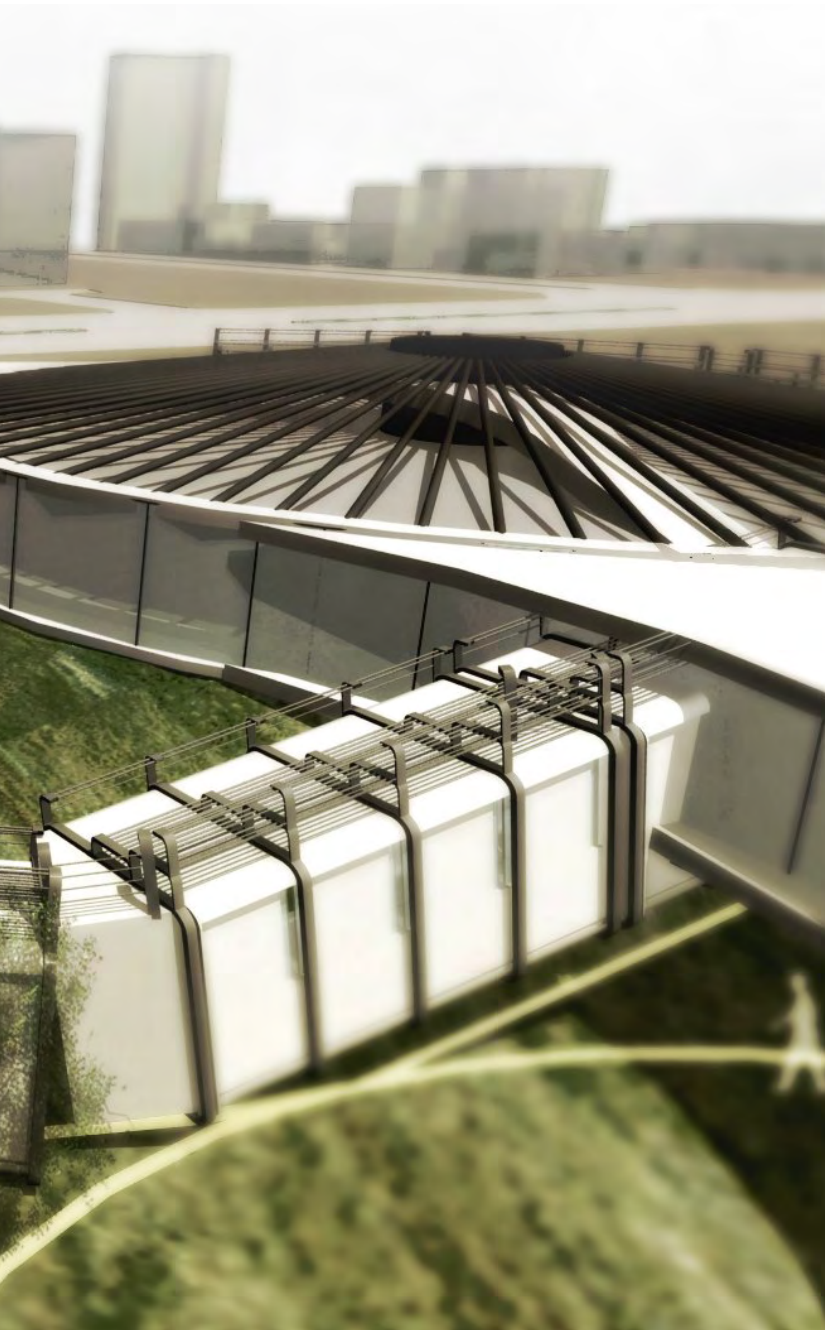


Active Knowledge

National Chiao Tung University /08 09

Between knowledge and Activities-redefine by behavior





2011年，知識在網路上都可取得？為什麼需要圖書館？圖書館該扮演什麼樣的角色？

教育思想家杜威，教育的過程應重視個人及社會，個人、教育、社會缺一不可。聯合國科學文化組織在1949年圖書館宣言中提到全民有平等獲取知識的權利。因此公共圖書館更是扮演取得知識的場域。

因為數位時代的來臨，因此它應該是一個機構！不只是被動更能主動提供知識。透過流動知識的方式達到知識最大利用。

All kinds of knowledge available on the internet by the year 2011? Why do we need library? What role should library play?

Educational philosopher Dewey thinks that the education process should emphasize individuals and the society, none of them could be excluded in the process. In the 1949 Library Manifesto, UNESCO, asserted the equal right of education. Thus public libraries play an even greater role as the platform of knowledge.

With the approach of digital age, the library should transform into an organization, not passively offering but actively providing knowledge. Knowledge achieves its greatest effect through the process of spreading communication.



資訊一直如莫爾定律般的膨脹，實體書的數量業日益減少，需要知識往往在網路上都可取得。

2011電子書 = 知識

為什麼需要圖書館？

	電子書	圖書館
方便	Win	
即時	Win	
深度		Win
空間		Win
社交		Win
整理		Win
審制	Win	

電子書和圖書館差異

Educationist



John Dewey

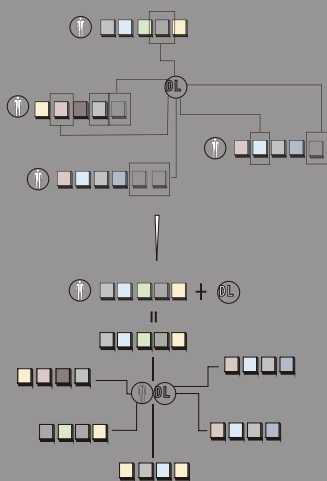


近代教育思想家杜威
對教育提到幾要點：

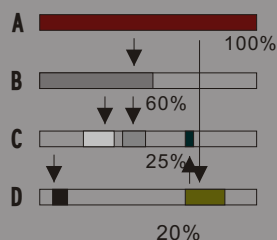
生長，絕不是純粹生物學意義上的脫離社會的個人發展，而是每一個人必須在社會的媒介中才能獲得生長。

人不是孤立，人之所以為人，乃是經由與他人相互作用的關係而來。人類藉由共同目的和理想結合起來，確有參與社會生活，個人始能獲得自我實現。

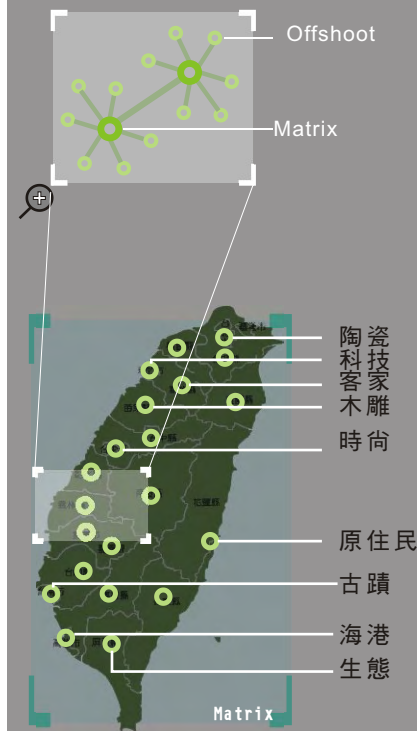
社會學的意義即強調對社會的重視。教育過程應同時重視個人與社會。



Peer-to-Peer

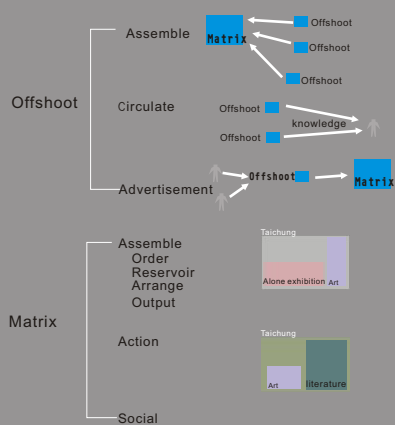


上傳者端把一個檔分成了Z個部分，甲在伺服器隨機下載了第N各部分，乙在伺服器隨機下載了第M個部分，也加快了用戶方（甲乙）的下載速度，效率也提高了，更同樣減少了地域之間的限制。比如說丙要連到伺服器去下載的話可能才幾K，但是要是到甲和乙的電腦上去拿就快得多了。



2011

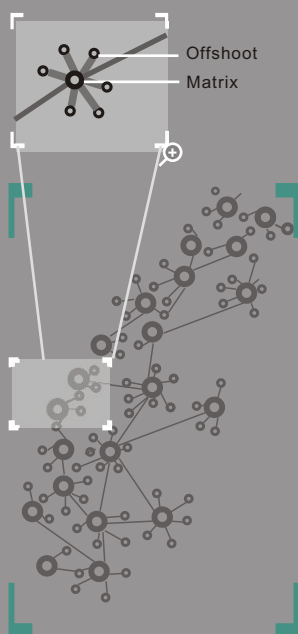
小果無意間看到了有一個室設的知識展覽，這個月巡迴到住家附近，去看看室內設計，真實的模型和互動體驗裝置是網路上所看不到的。有整理過的知識應該可以較快的了解到室內設計，如果不錯的話，下次出門在去市區看建築、室內設計、設計的展覽，到時候在約室內設計系的網友更加了解。



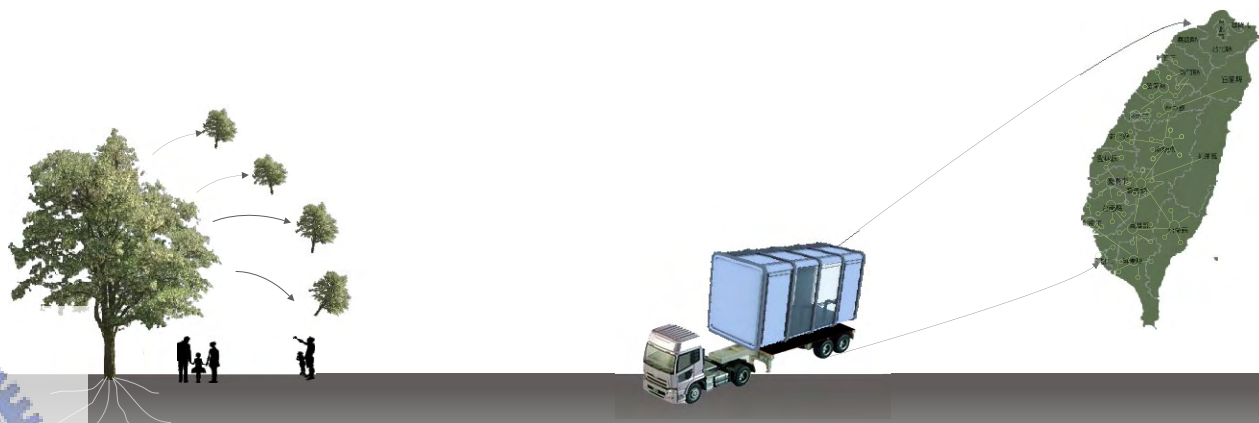
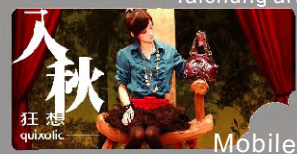
FUNCTION

Knowledge

實際的物體展覽，在2011年成為民眾討論的議題也成為定期吸收知識的方法。網路知識之外取得知識的方式。

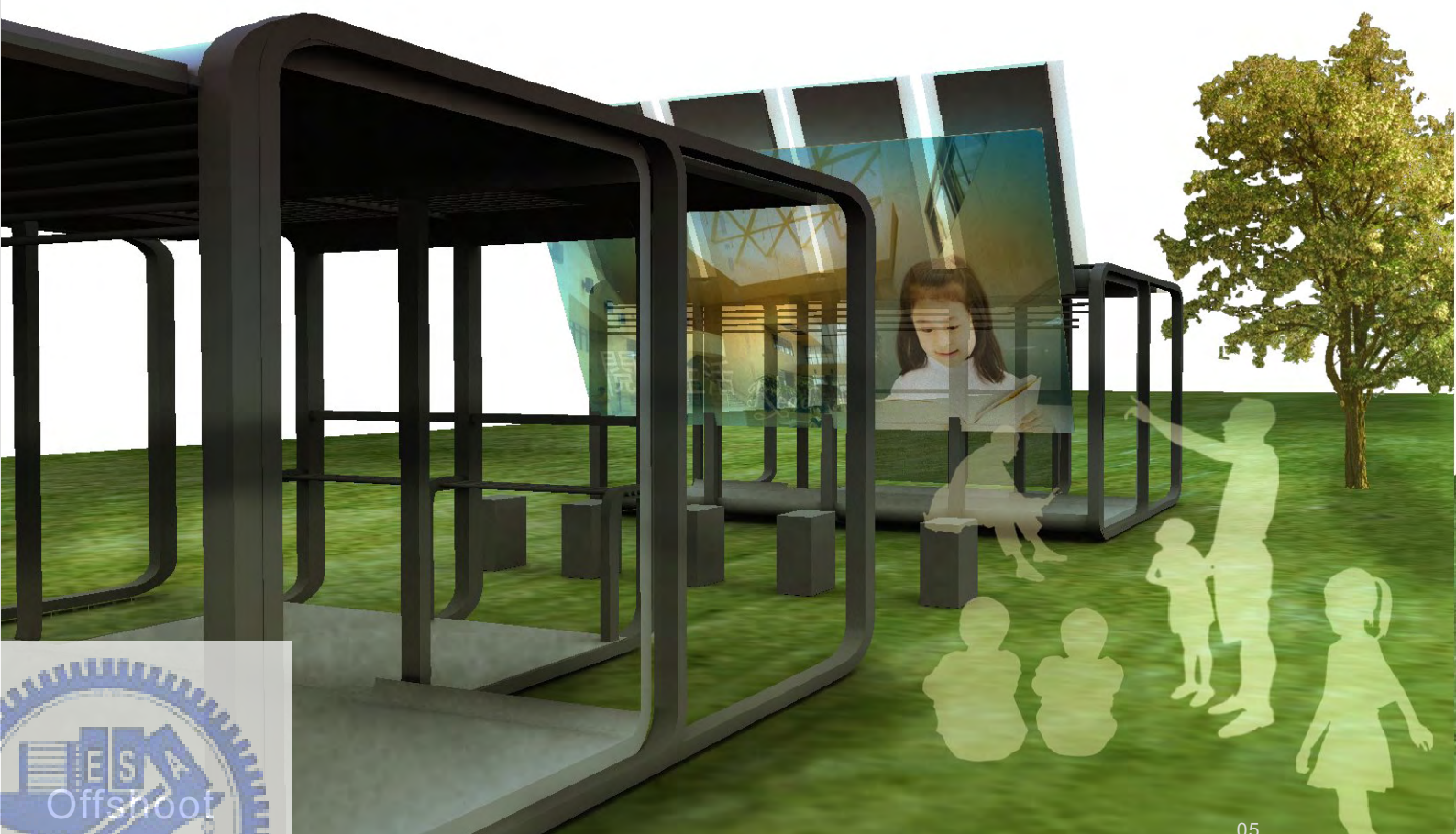


Taichung art

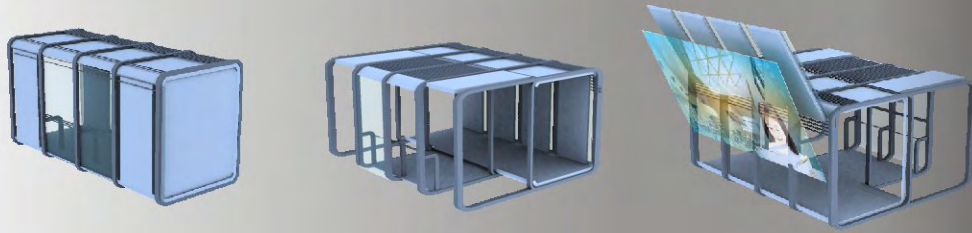


吸收當地獨特文化 加以紀錄、整理出版、展覽





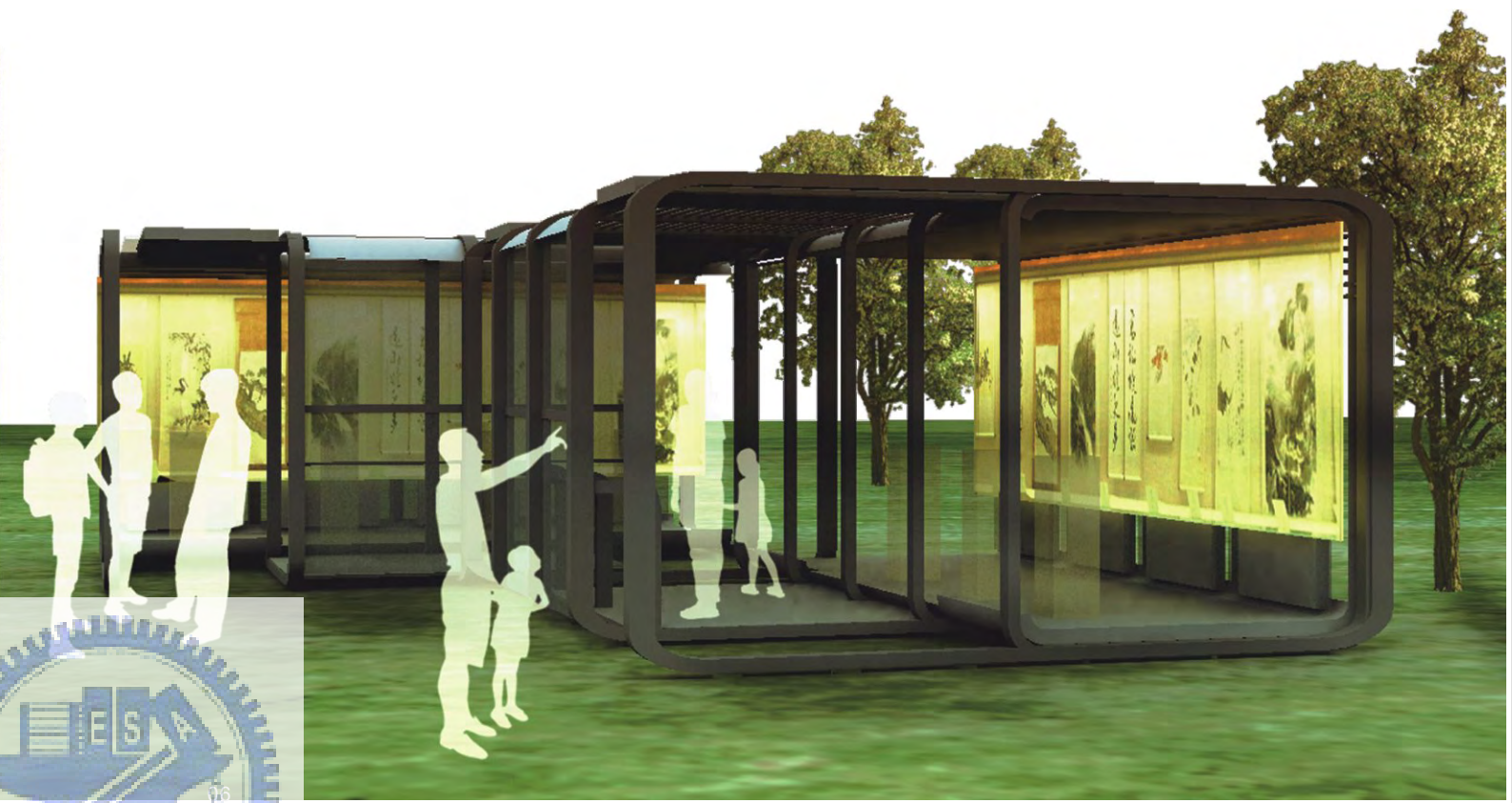
台灣每個地區，依當地特色去定義，母體的類型



子體

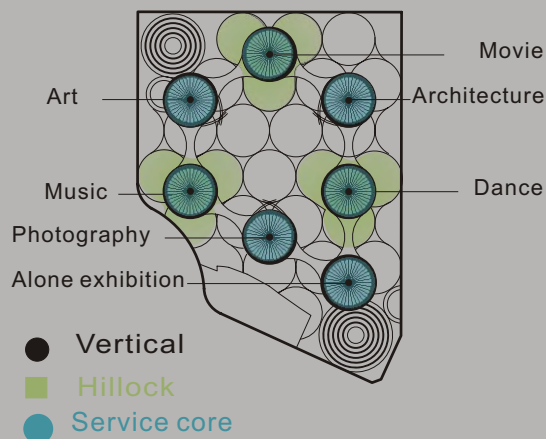
- 收集
- 傳播
- 廣告

活動教學
展示
單一主題



Space

	Small (600m ²)	Middle (1200m ²)	Large (4800m ²)	
Drama	300	800	3000	Persons
Movie	350	900	3500	Persons
Music	320	830	3250	Persons



2011年，知識在網路上都可取得？為什麼需要圖書館？圖書館該扮演什麼樣的角色？

圖書館透過網路隨著使用者的需求，去安排它該被移動到哪裡、及安排哪些書去那裡。

用教育思想家想去思考，圖書館的角色。

教育思想家杜威提出，教育的過程應重視個人及社會，個人、教育、社會缺一不可。

聯合國科學文化組織在1949年圖書館宣言中提到全民有平等獲取知識的權利。因此公共圖書館更是扮演取得知識的場所。

因為數位時代的來臨，因此它應該是一個機構！不只是被動更能主動提供知識。透過流動知識的方式達到圖書館最多利用的機會。



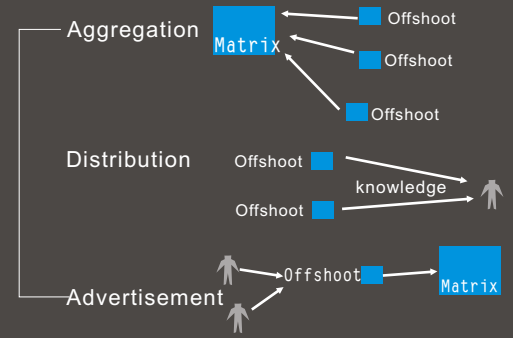
貨櫃輸送機制



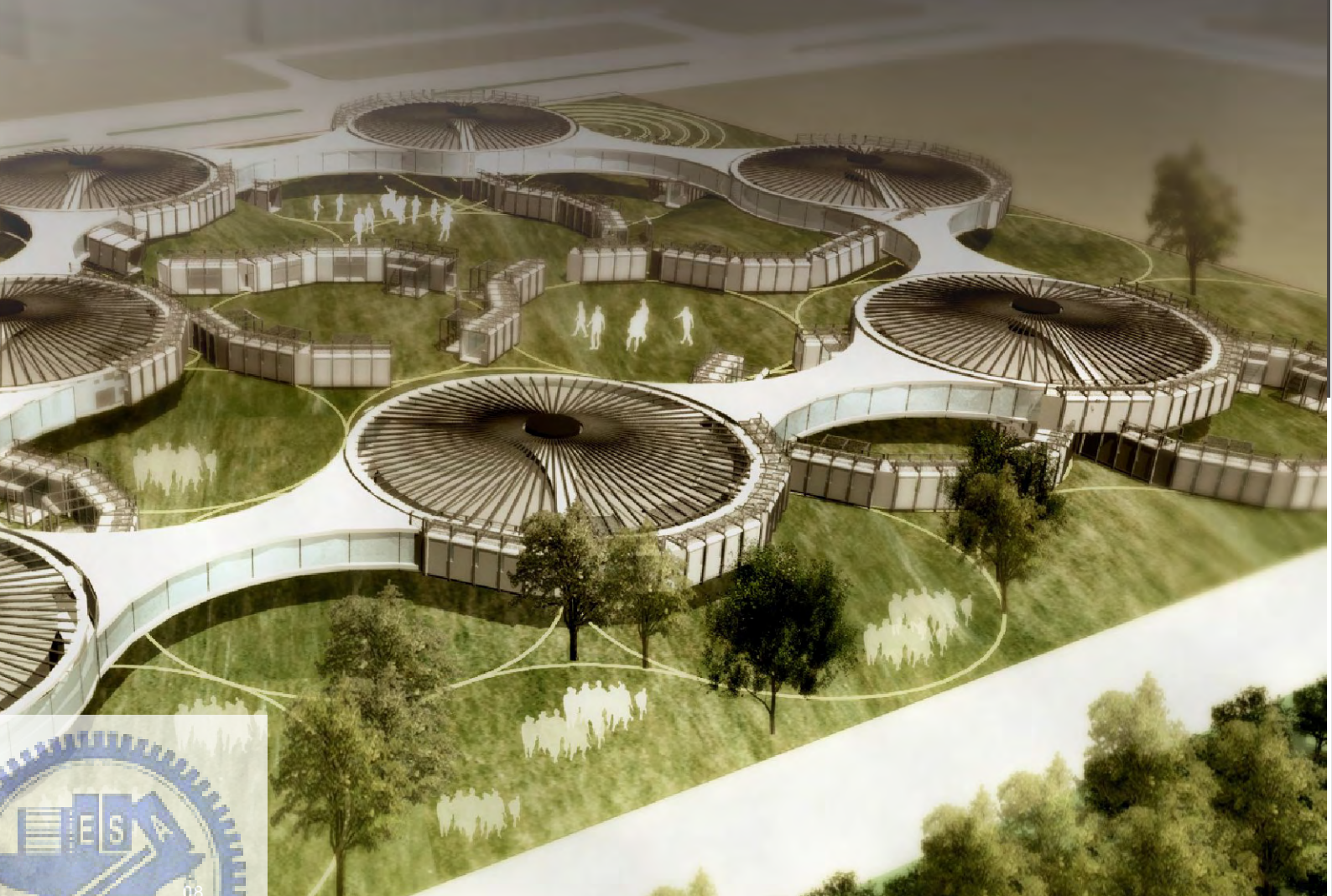
活動所需要的空間



Offshoot
子體



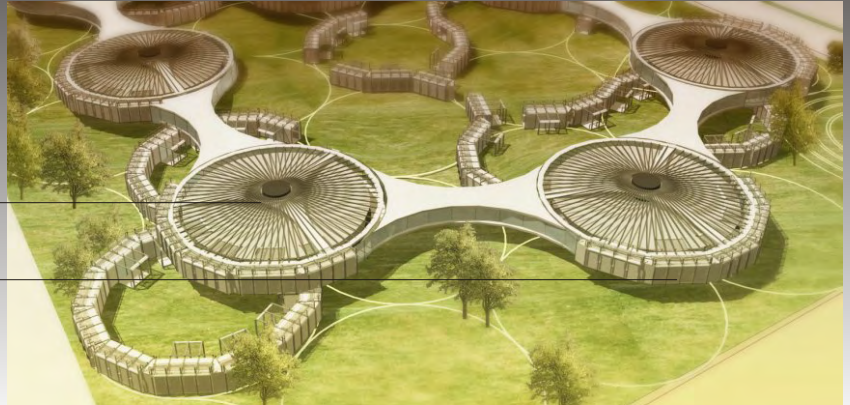
Matrix
母體





Service core

Surrounded by offshoot

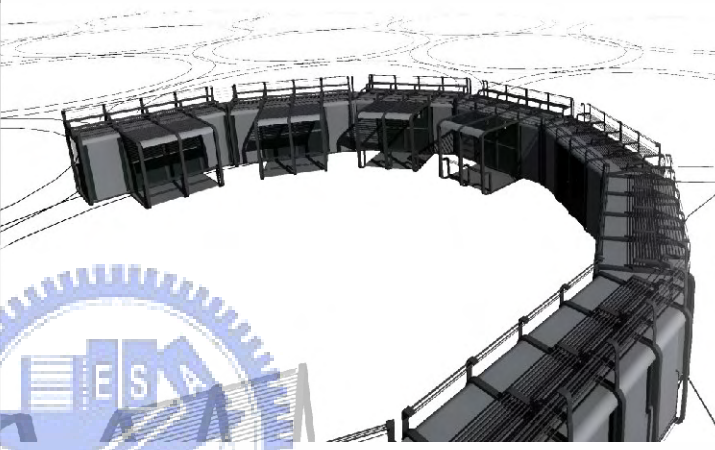
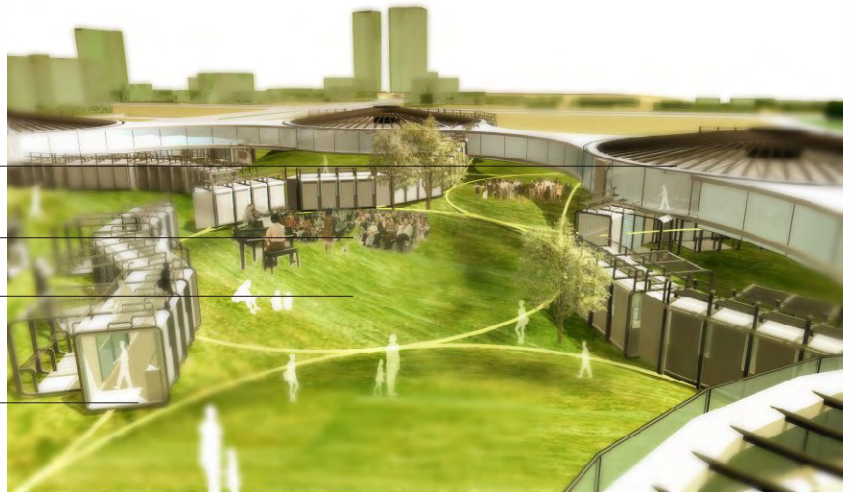


Service core

Concert

Space changes from activities

The space is connected by the offshoot.

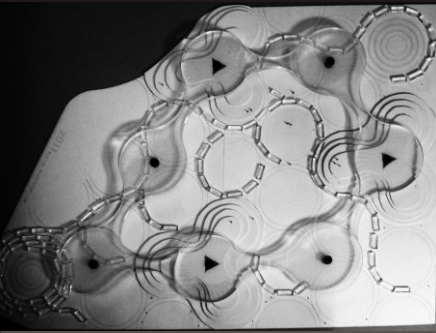


Offshoot



09 Matrix





Model

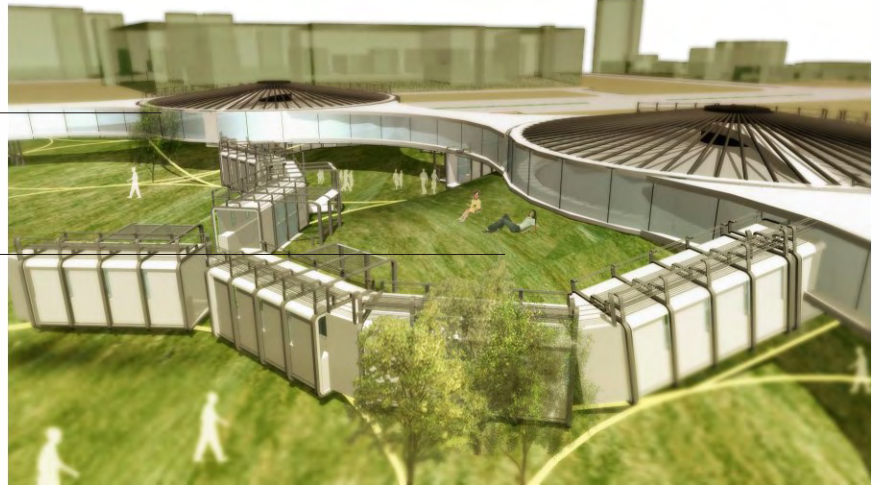
Interior

Action



Service core

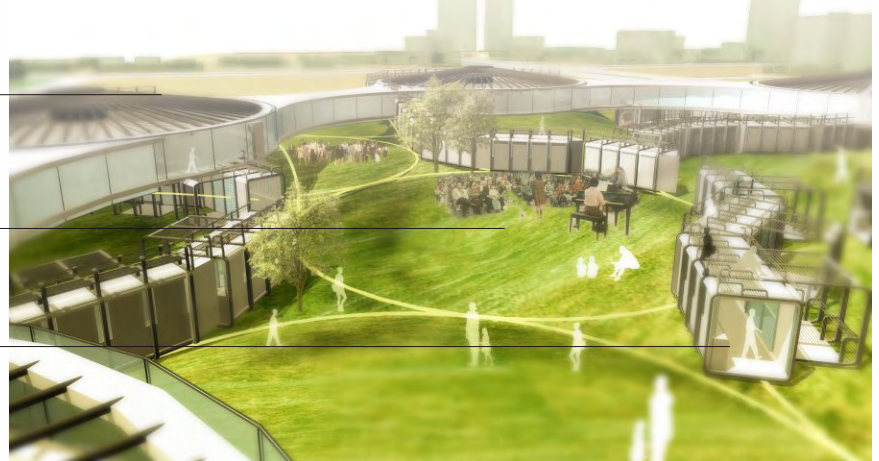
Action



Service core

Concert

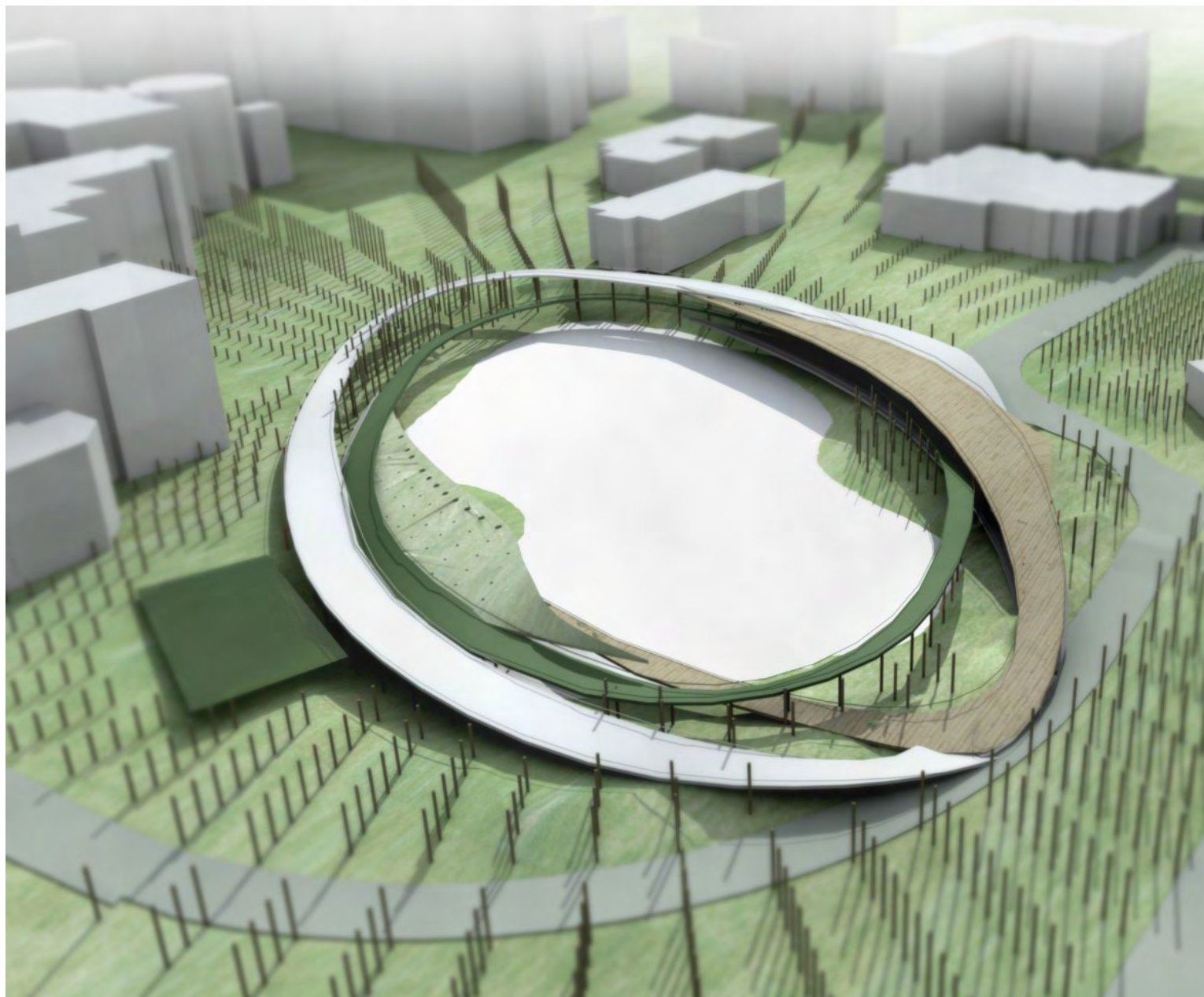
Space connection

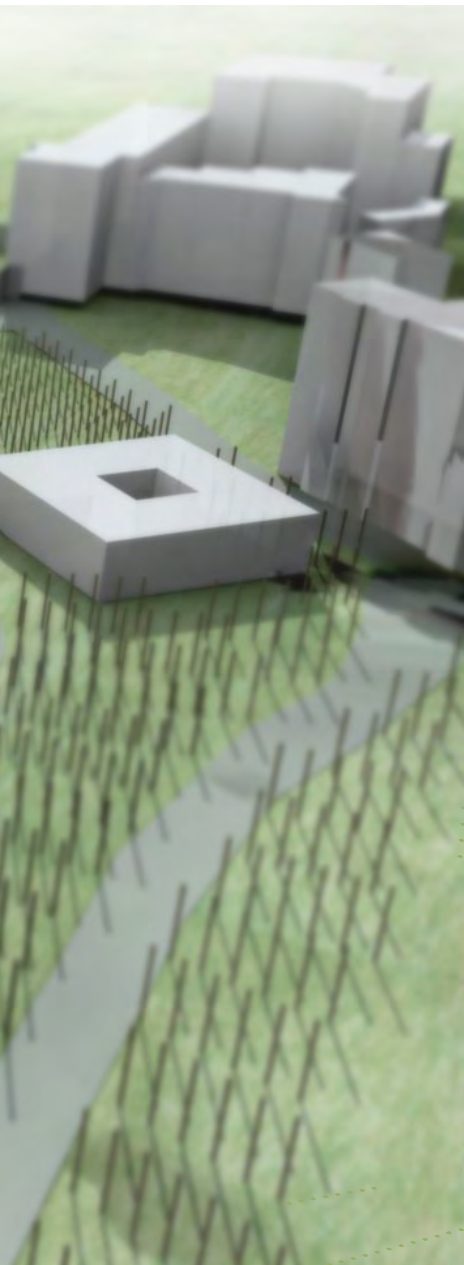


Life Circle

National Chiao Tung University /09

Between space and landscape redefine space of landscape architecture .





因爲人的活動是有機的，也有親近自然的本性，想創造更多有機的空間親近自然的空間。也藉此重新組織校園空間。

透過垂直的植物，用幾何的方式重新組織校園空間。有機的建築創造和自然結合的空間。

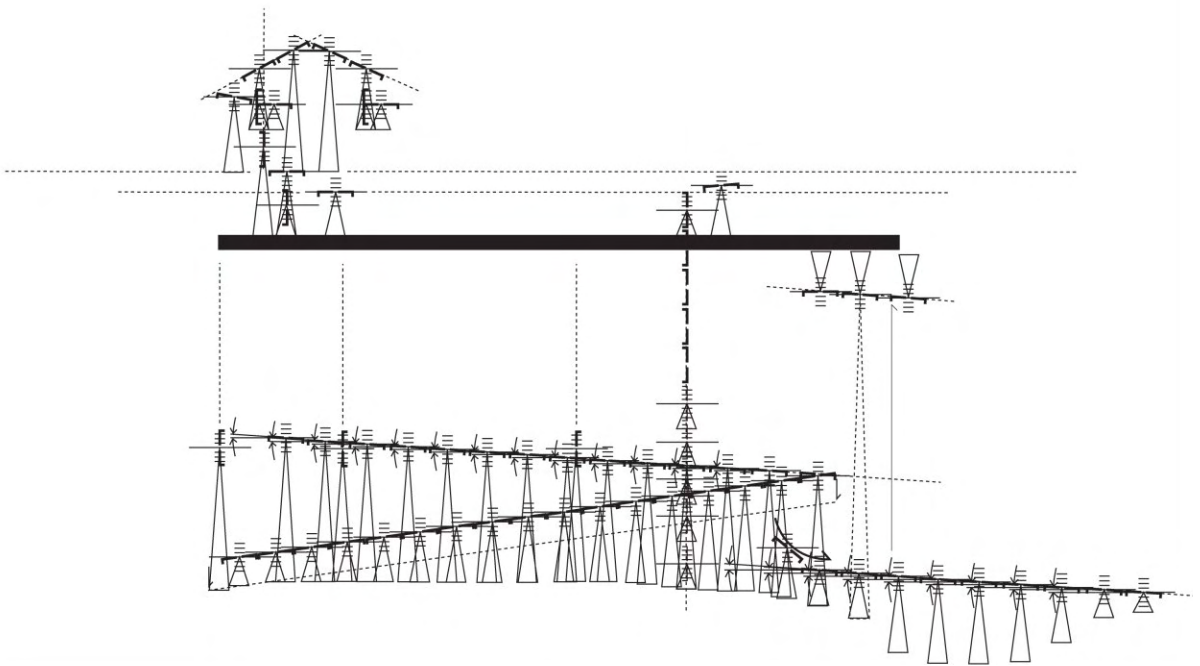
植物和建築是相結合的，成爲校園活動的核心。

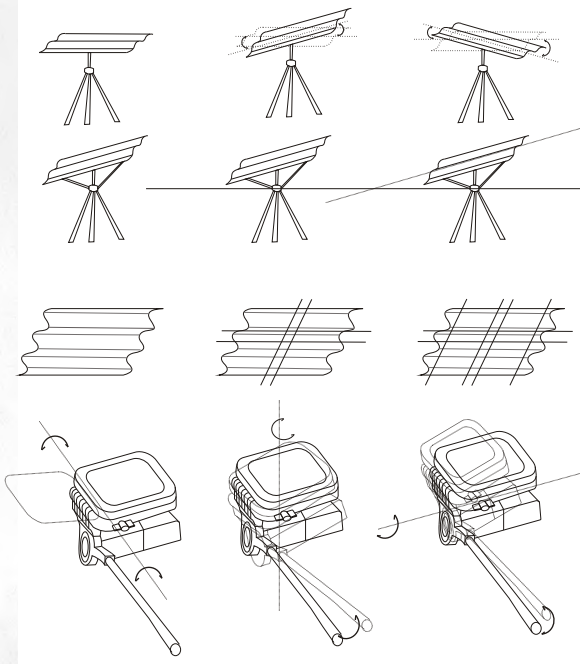
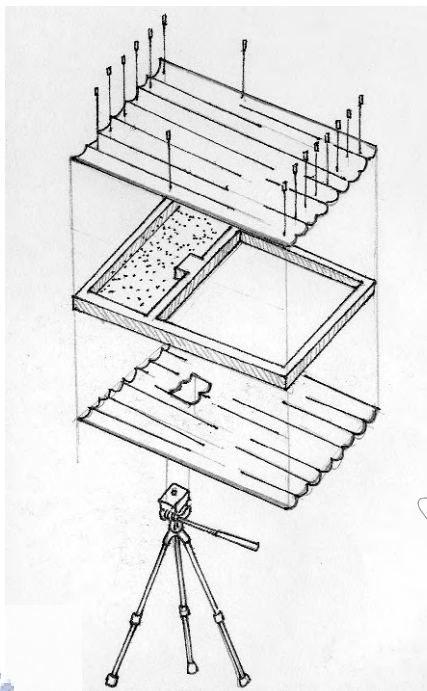
The activities caused by human beings are organic. People have the character of being close to the nature. Therefore the main concept is to create a more organic space where stay close to the nature as well.

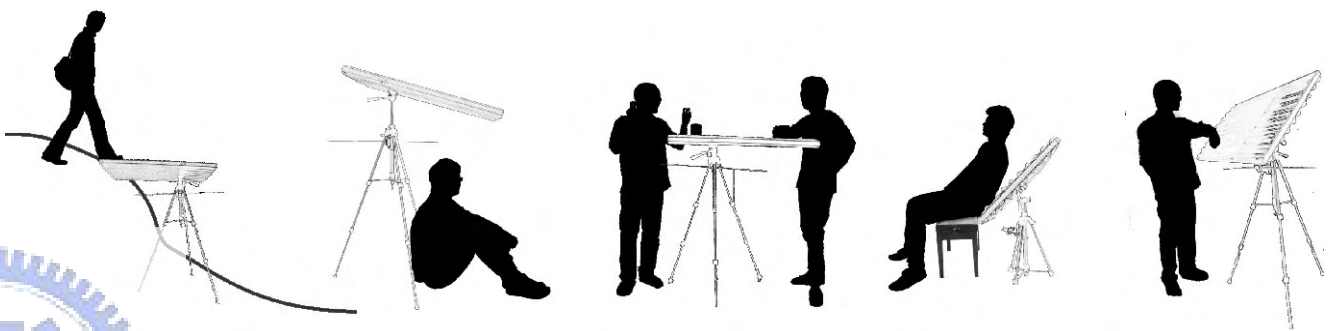
The campus space has been remodeled with the geometric order through vertical plants. The space is closely integrated into the nature by the organic building.

The plants and the building are combined with each other where might become the center of campus activities.

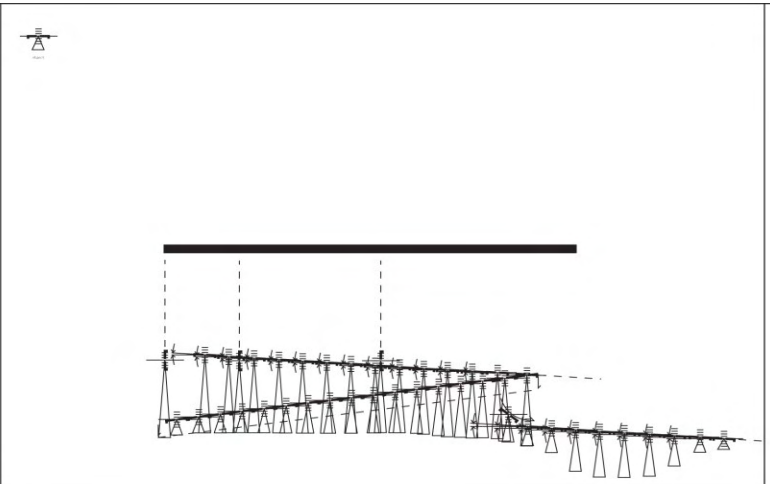
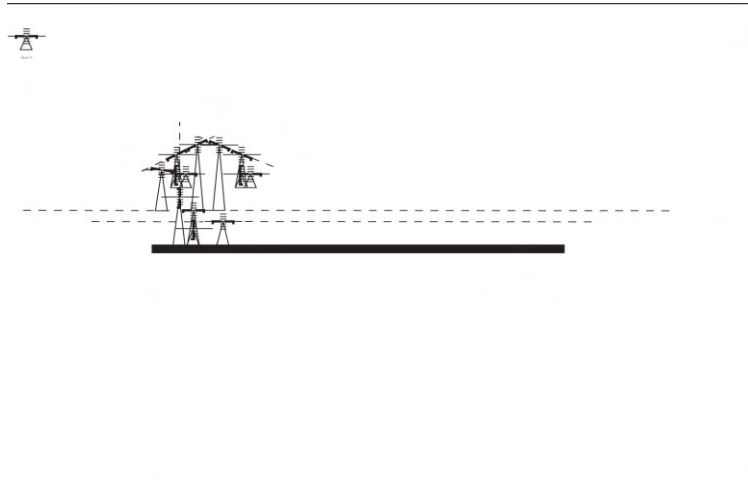










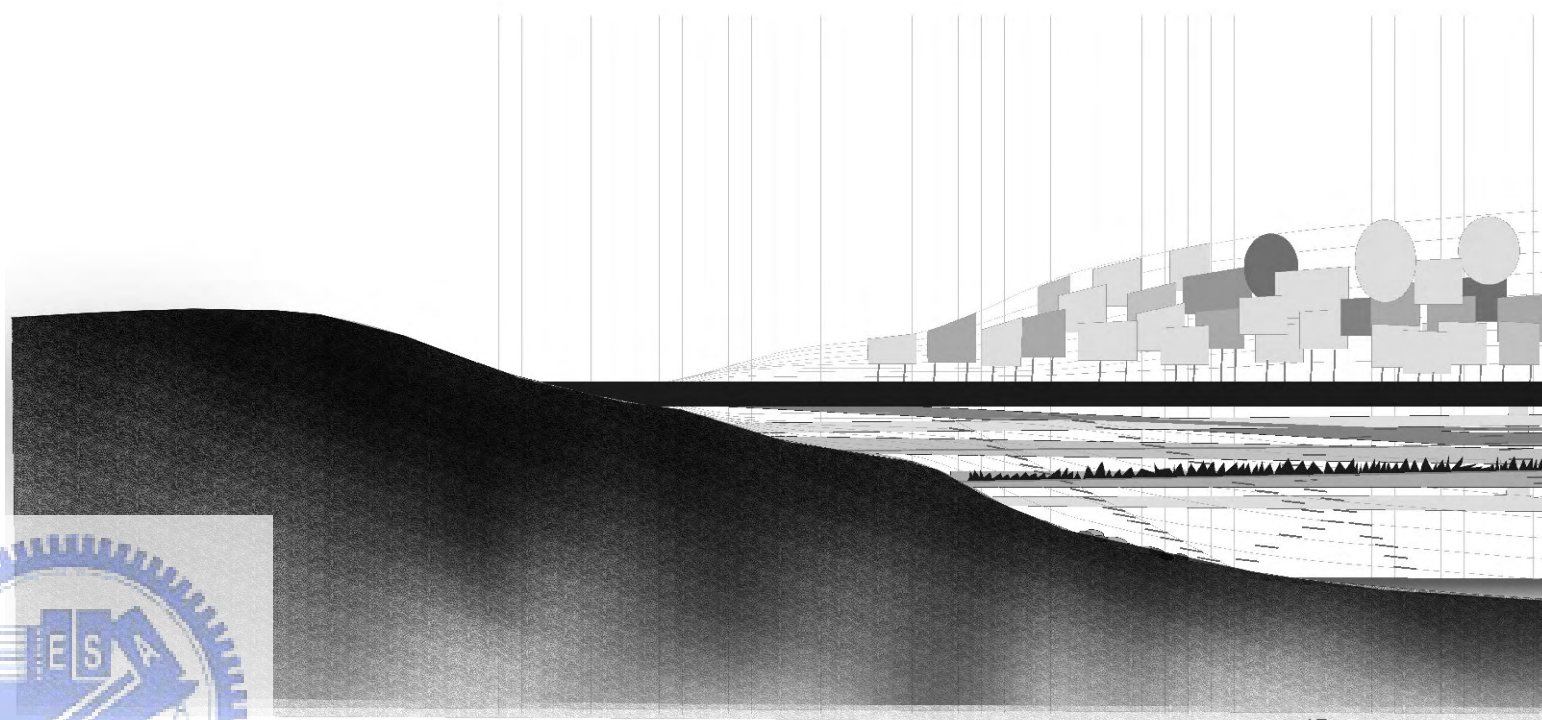
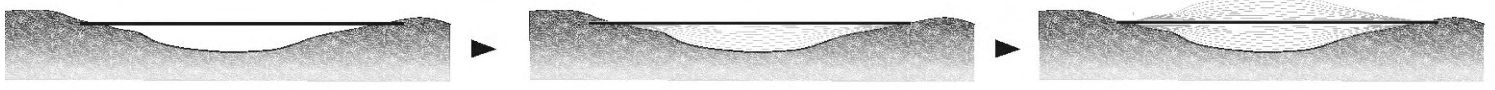
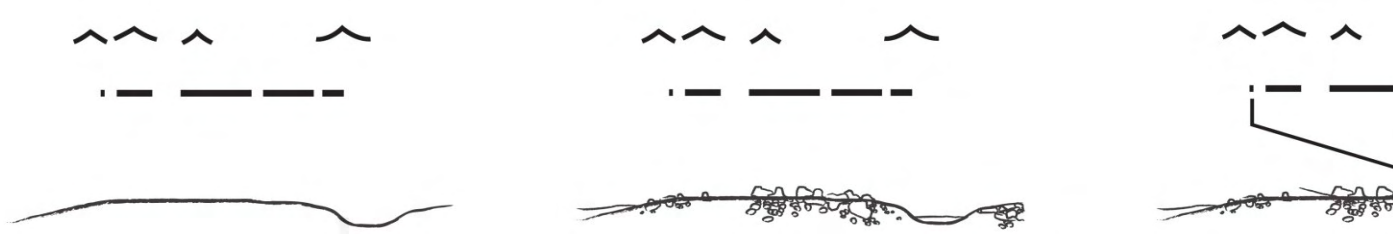


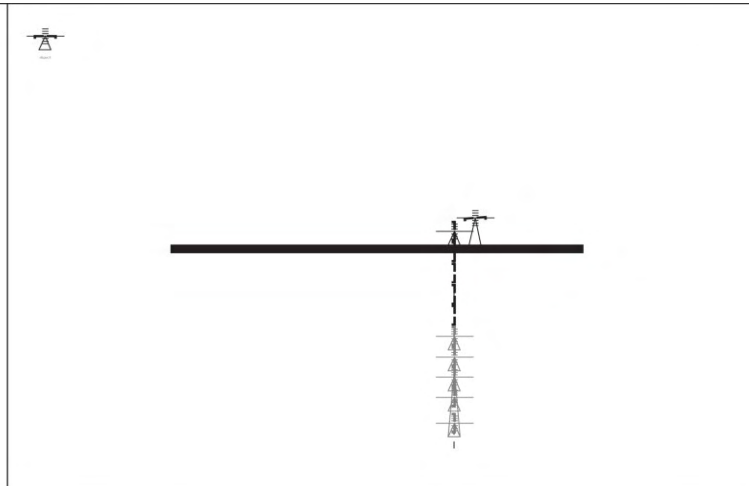
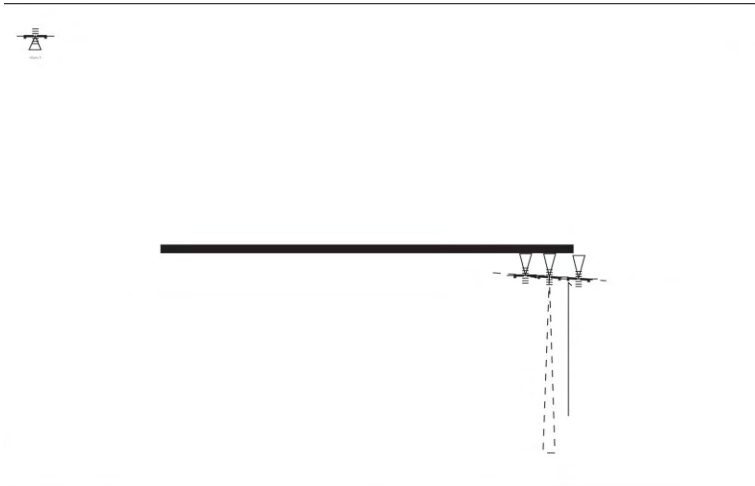
Environmental Change

Scene1

Scene2

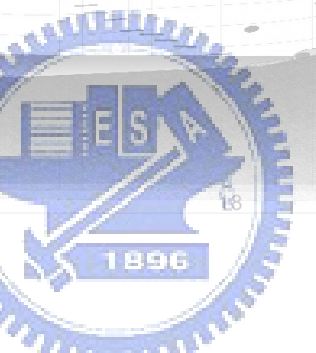
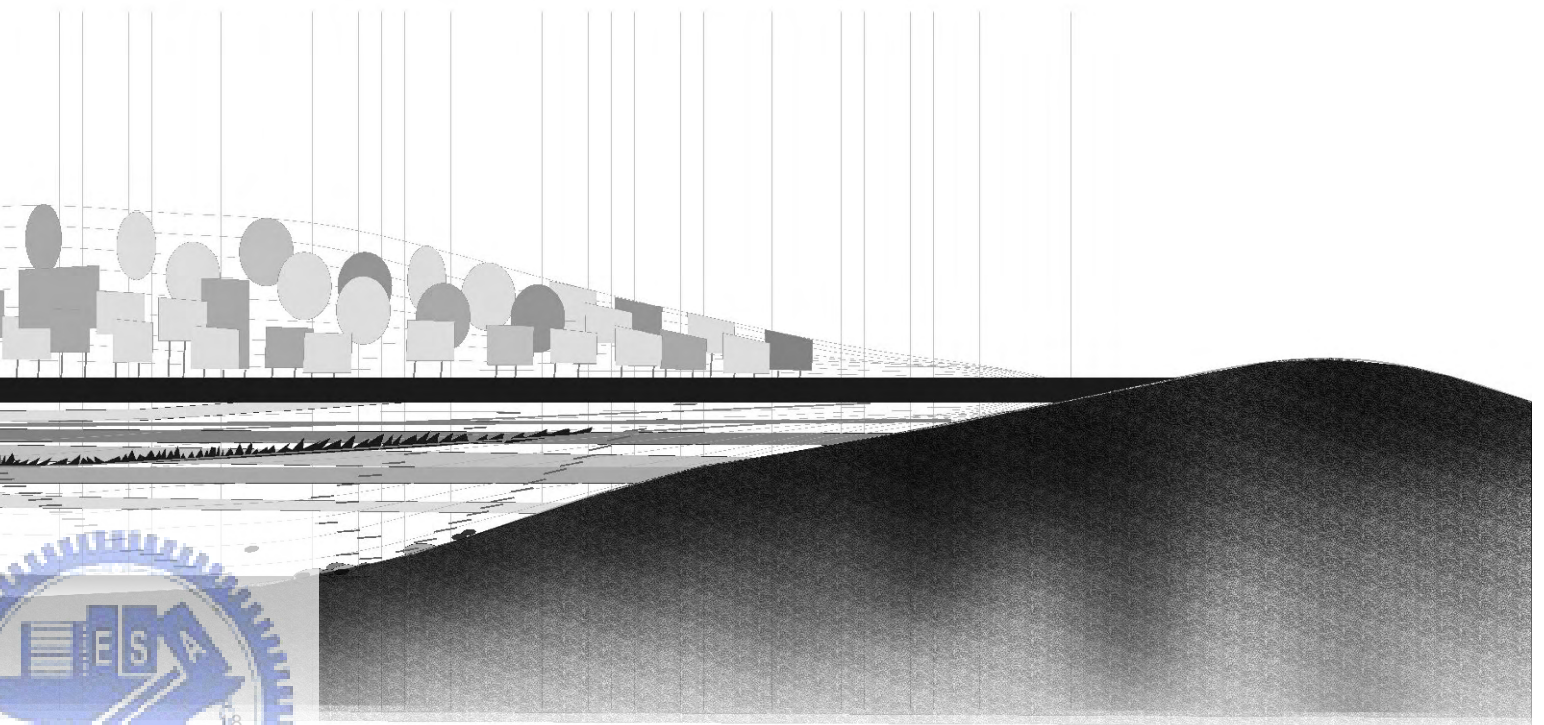
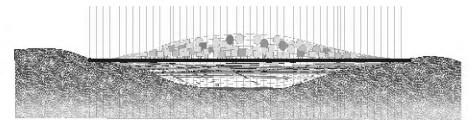
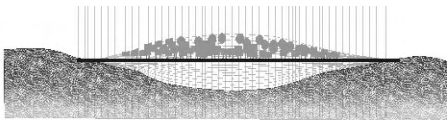
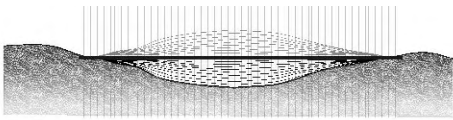
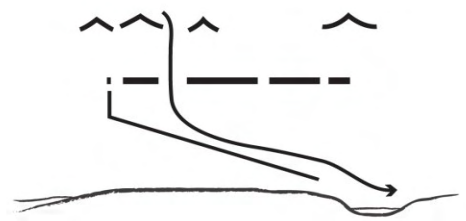
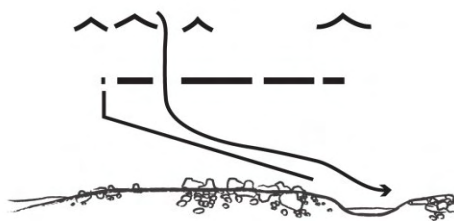
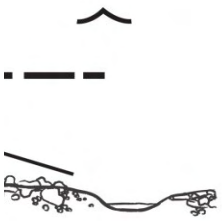
Scene3

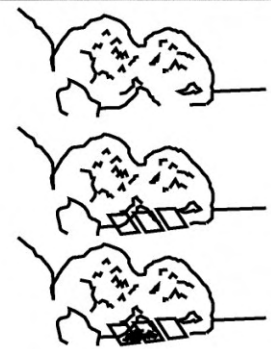
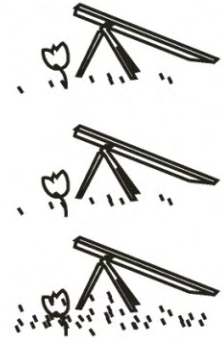
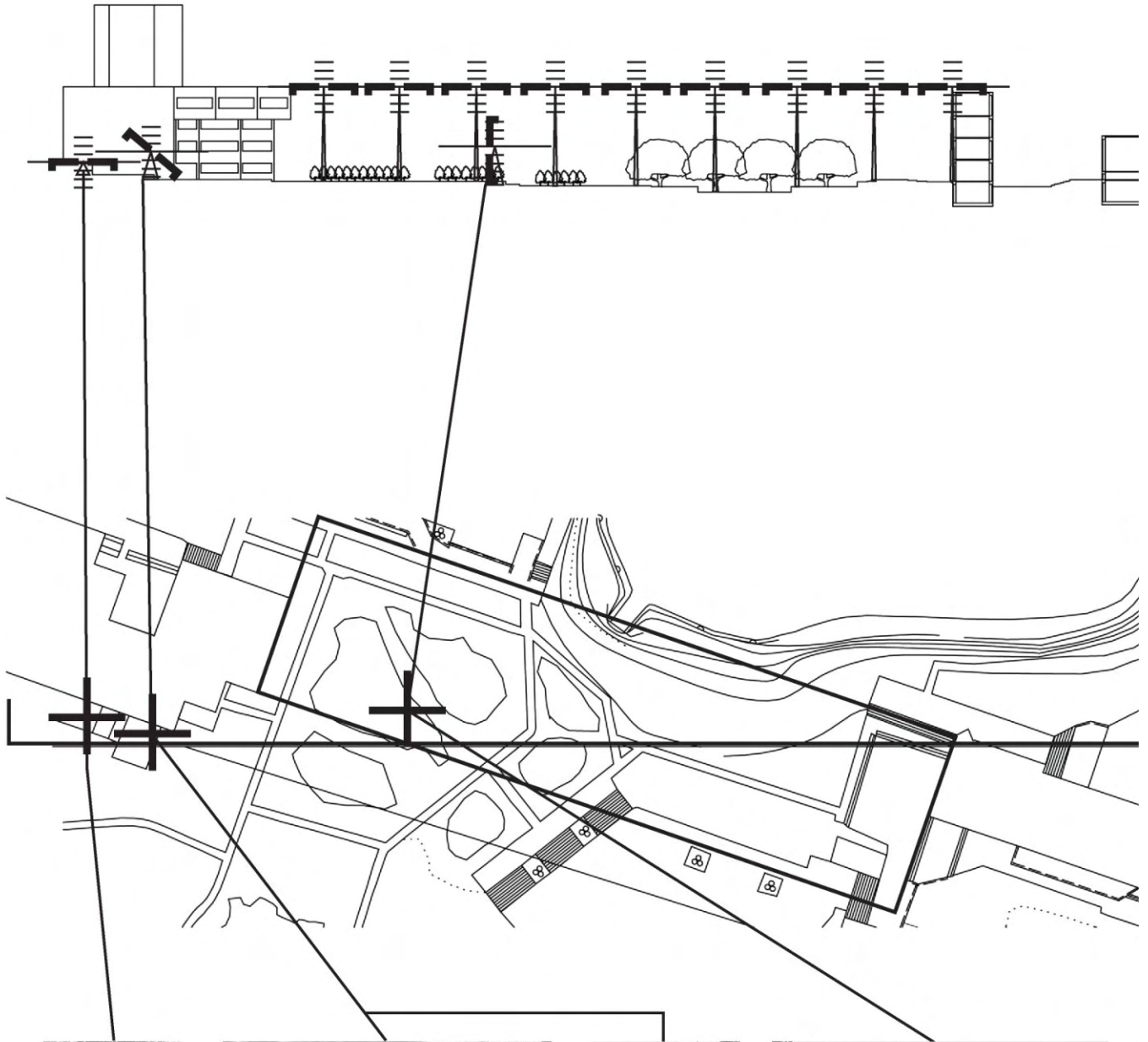


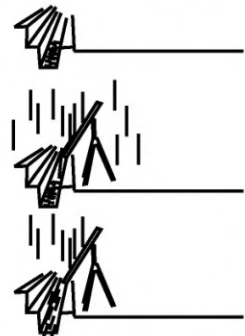
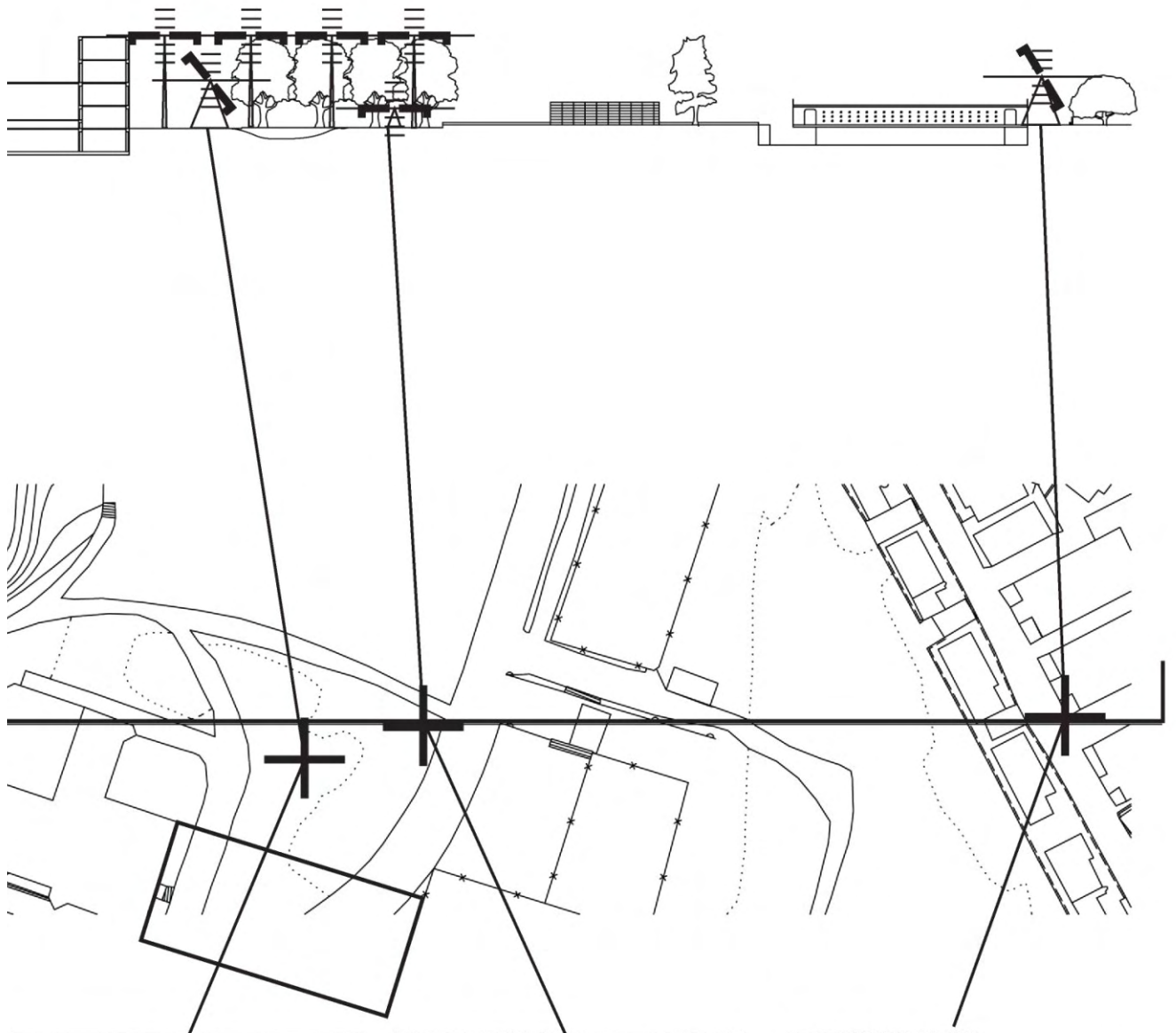


Scene4

Scene5







Separate

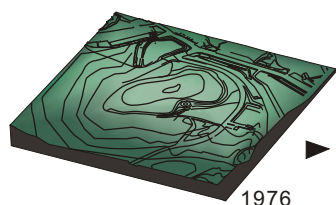
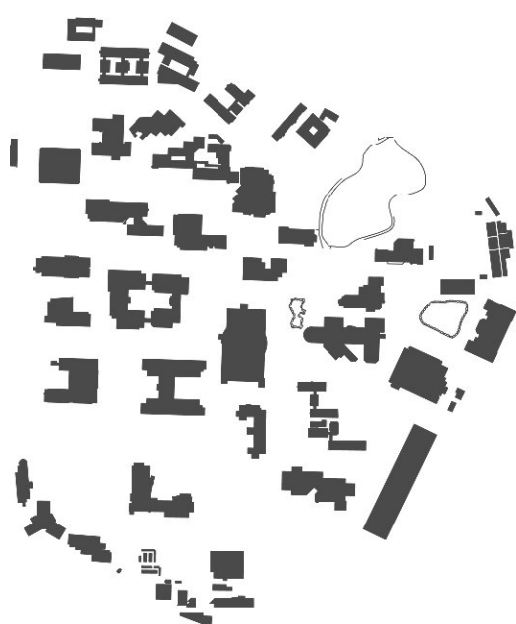
分散

connecting the spaces

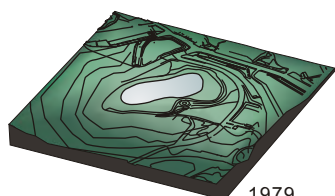
將空間連接起來

progressive process of the school

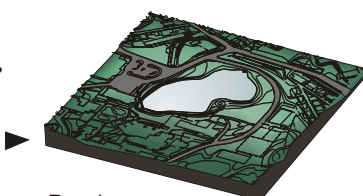
學校發展過程



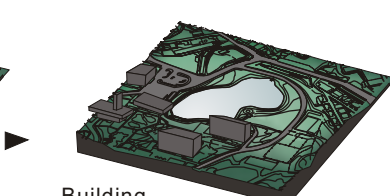
1976



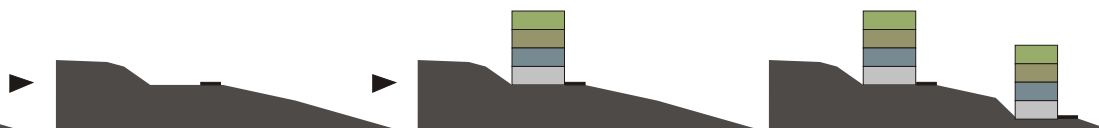
1979



Road



Building



Life school

Analysis of the campus

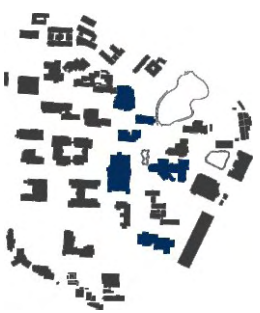
校園分析



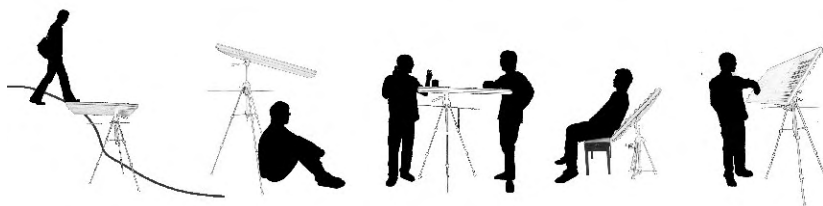
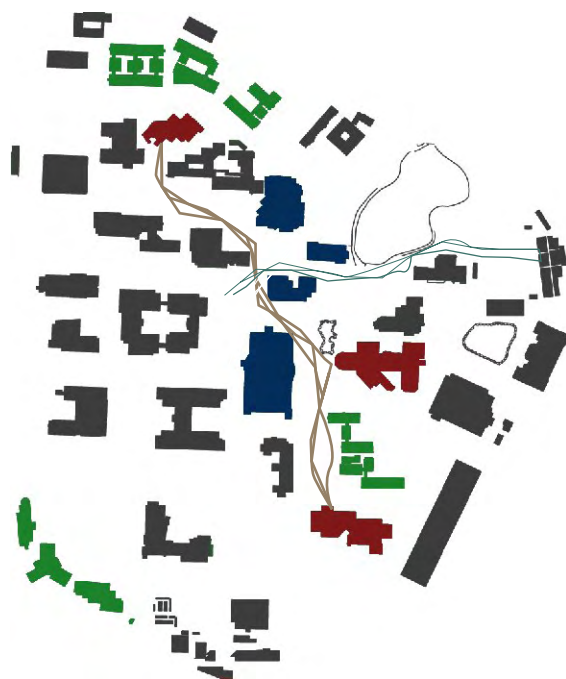
宿舍
dormitory



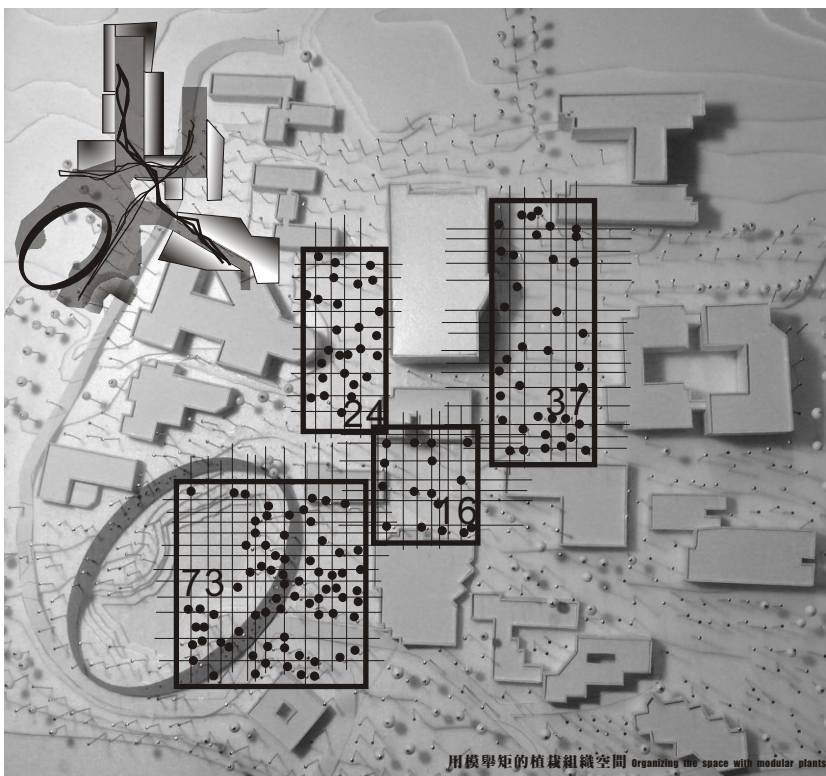
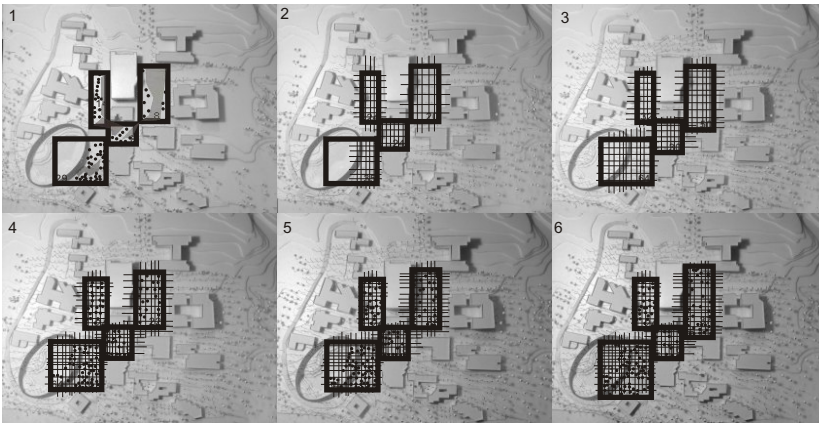
餐廳
restaurant



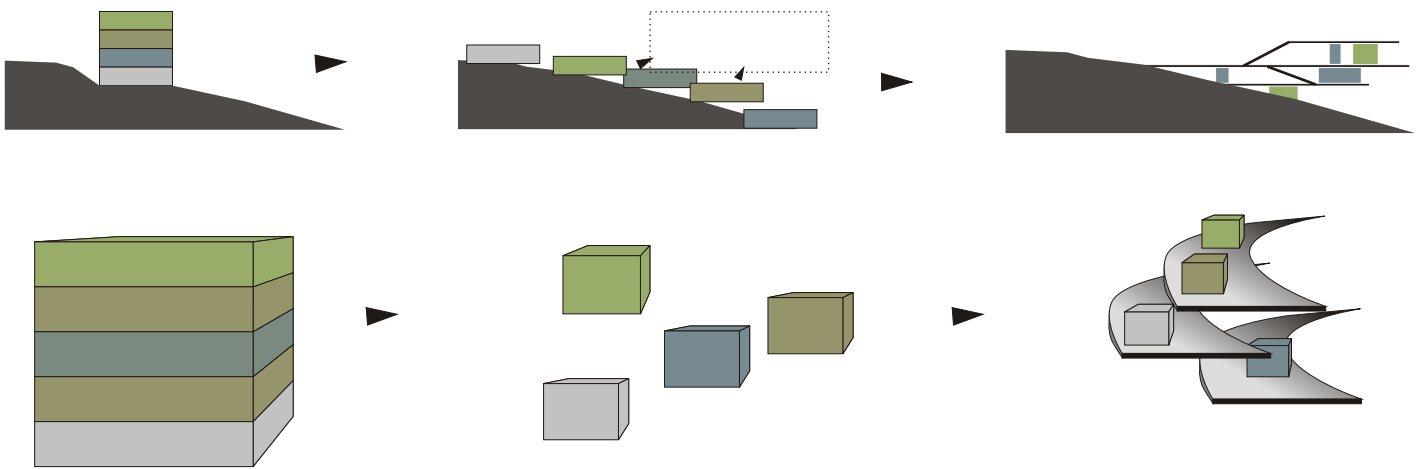
行政
administration



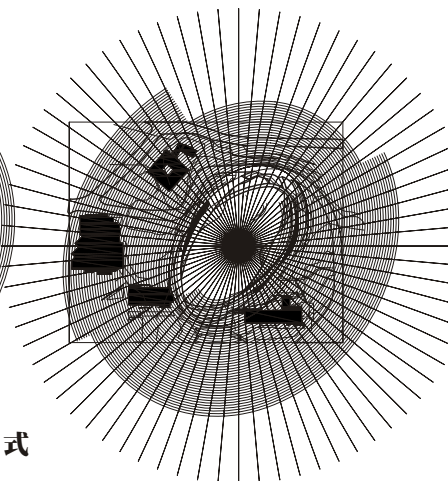
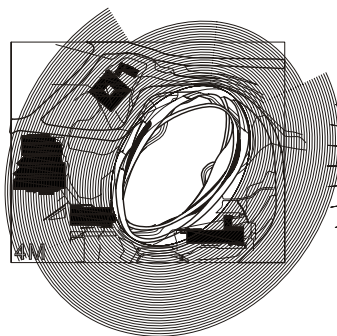
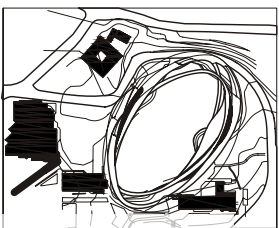
Method of spatial remodeling
重新組織空間的方式



To draw out programs in accordance with "LIFE"



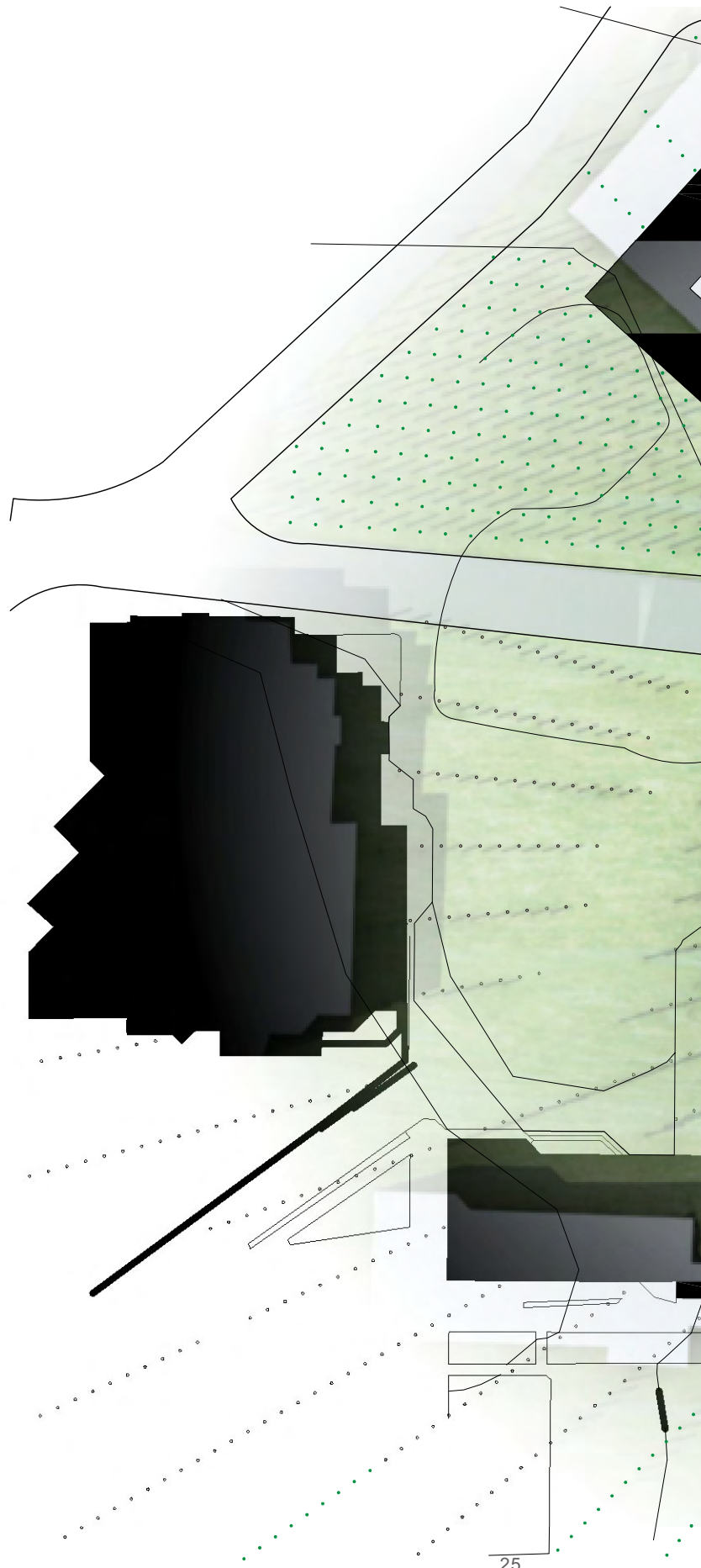
These program are correspond to the relationship of the site



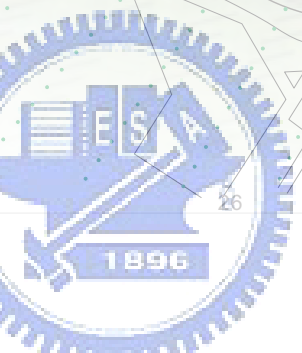
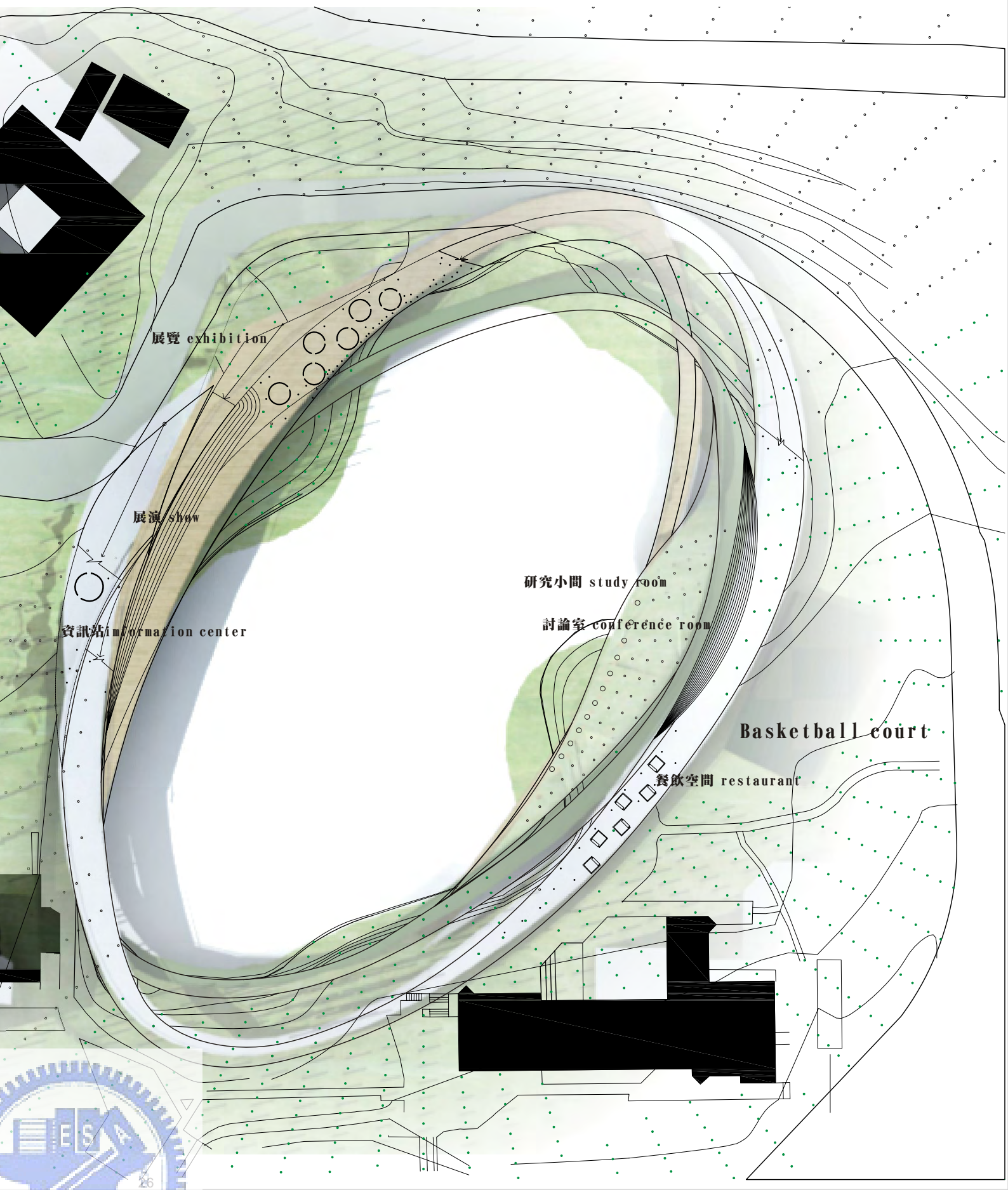
Organizing the space with modular plants 植栽種植的方式

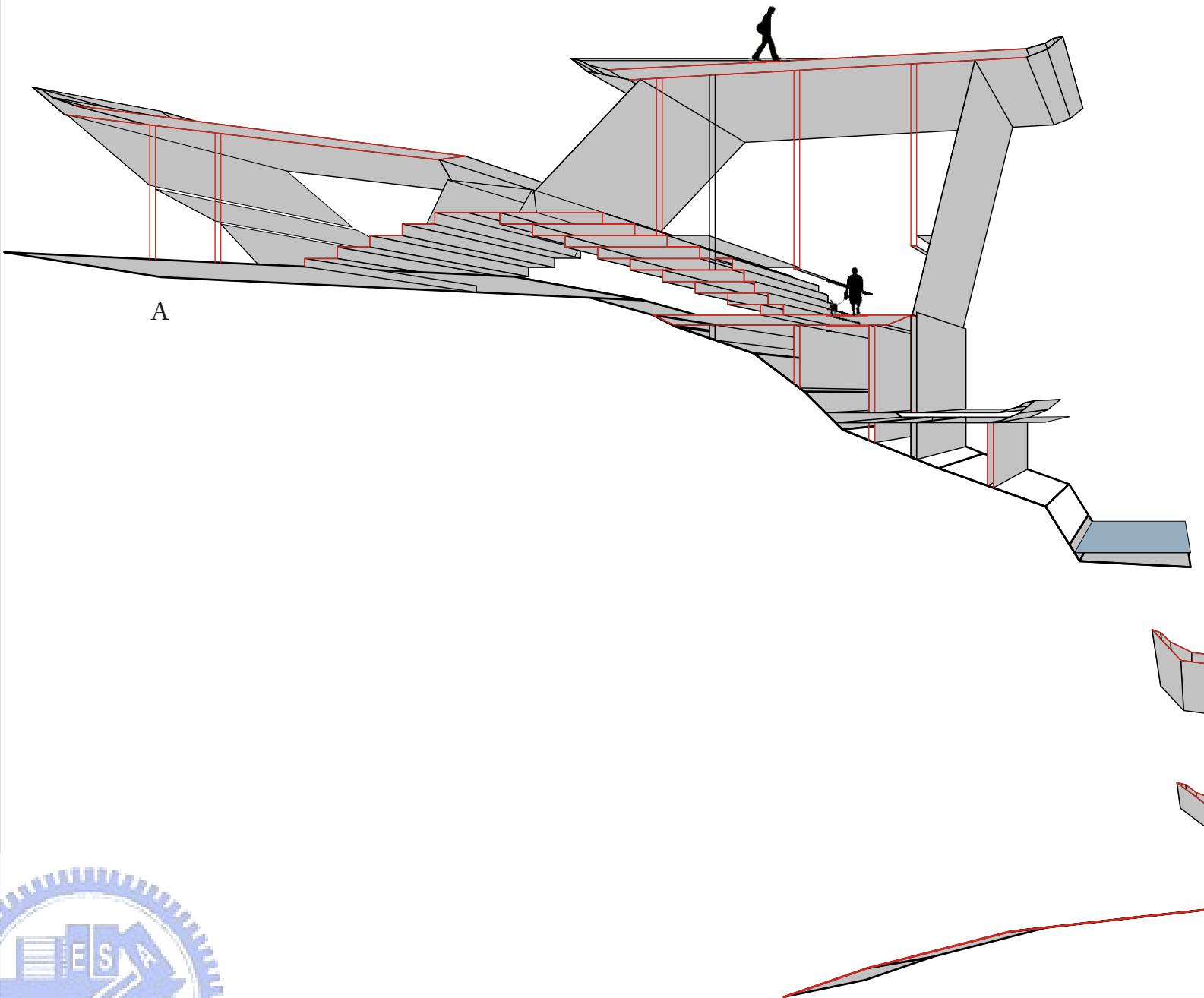
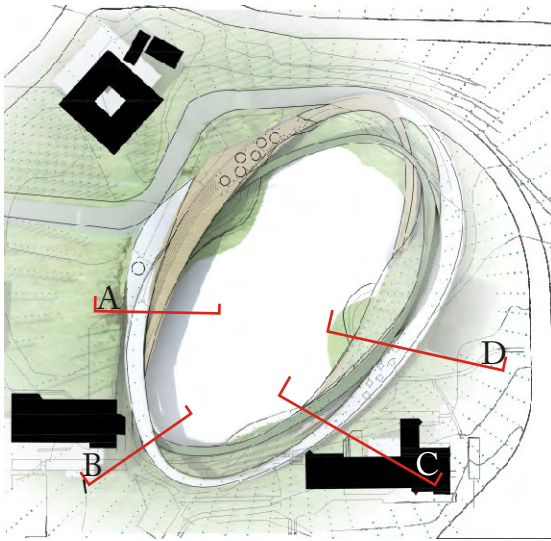


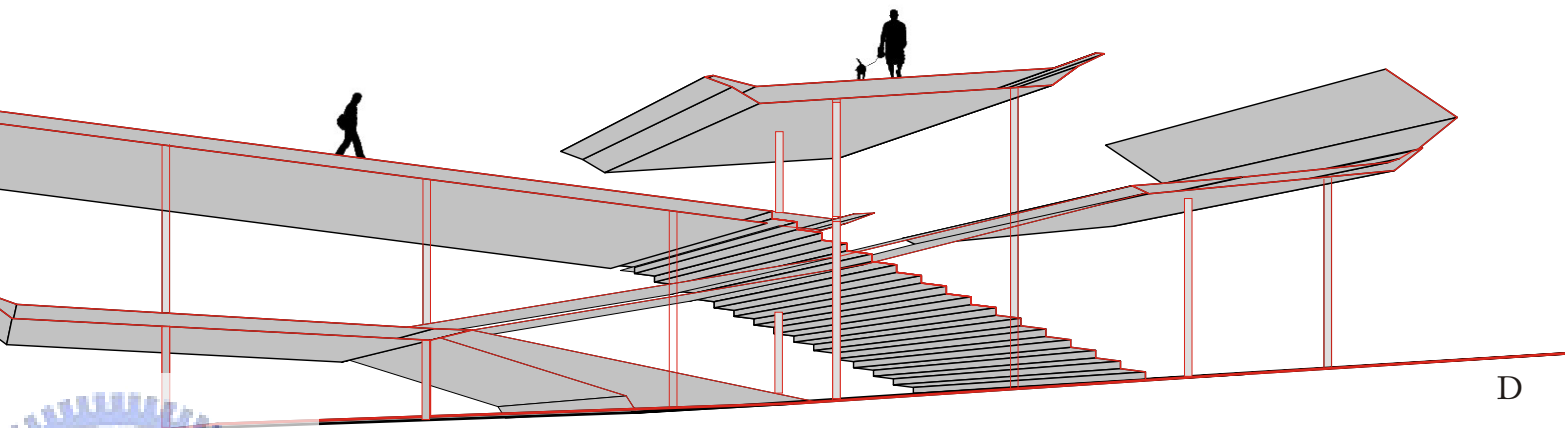
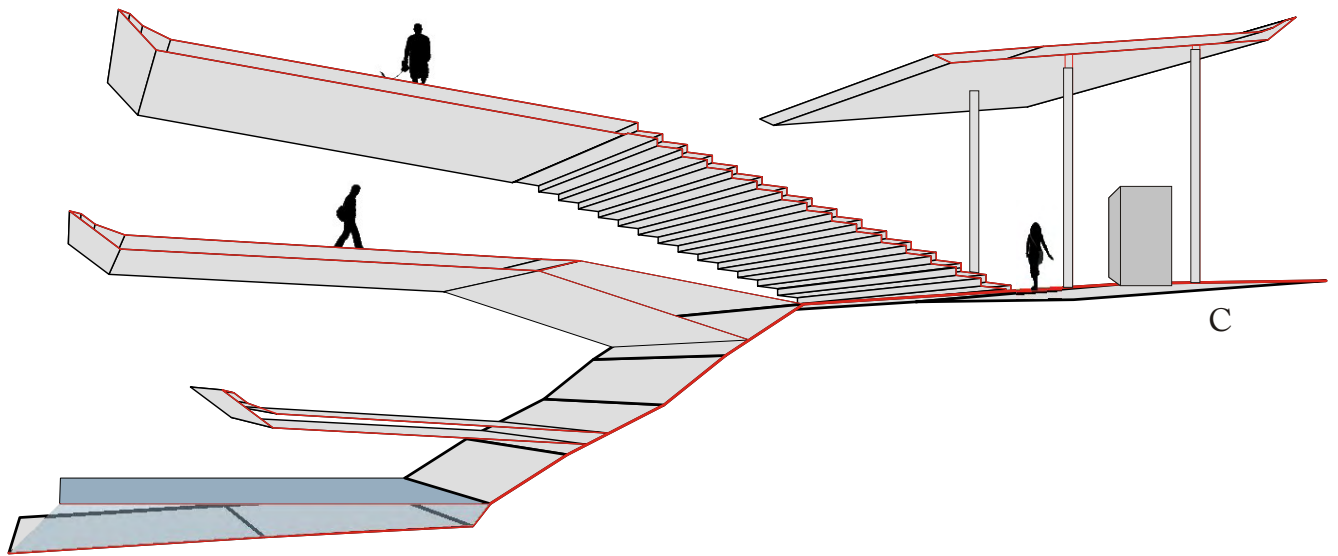
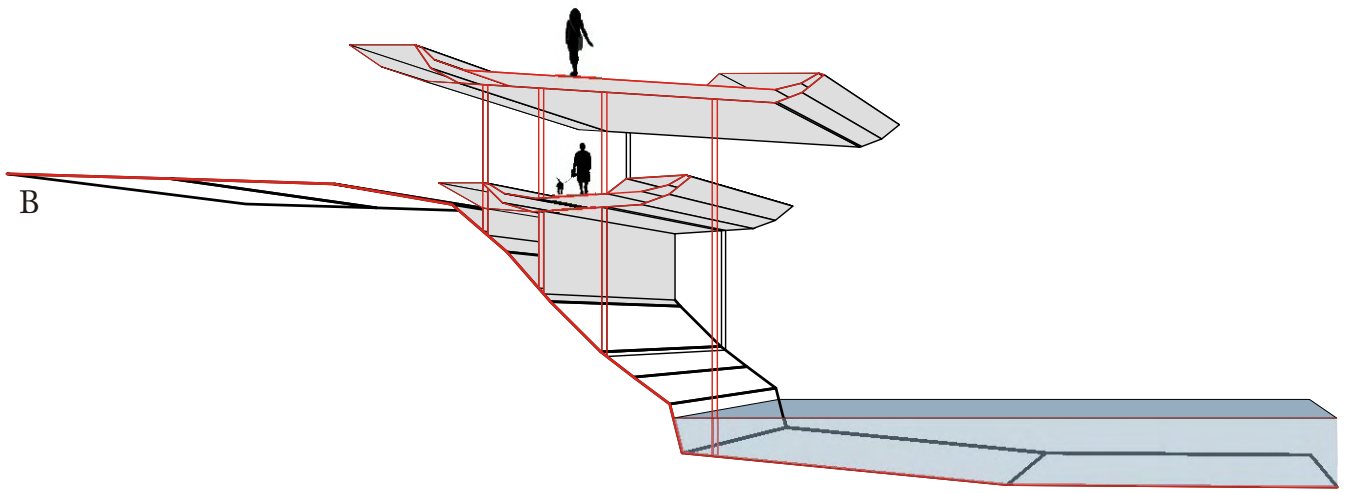
Site plan



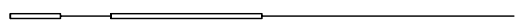
S : 1/1000 _____

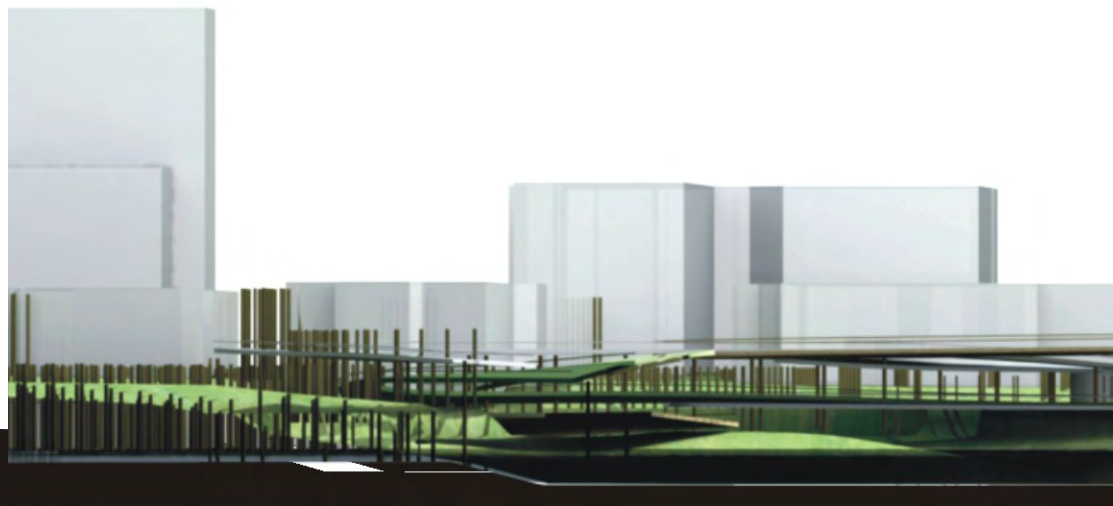
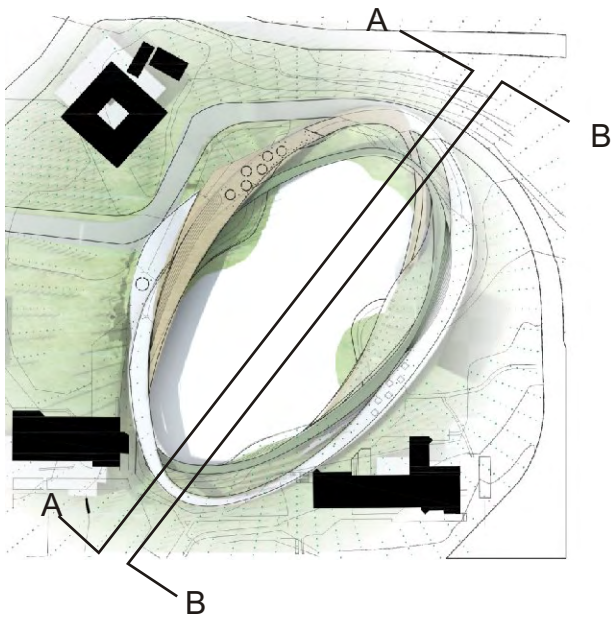




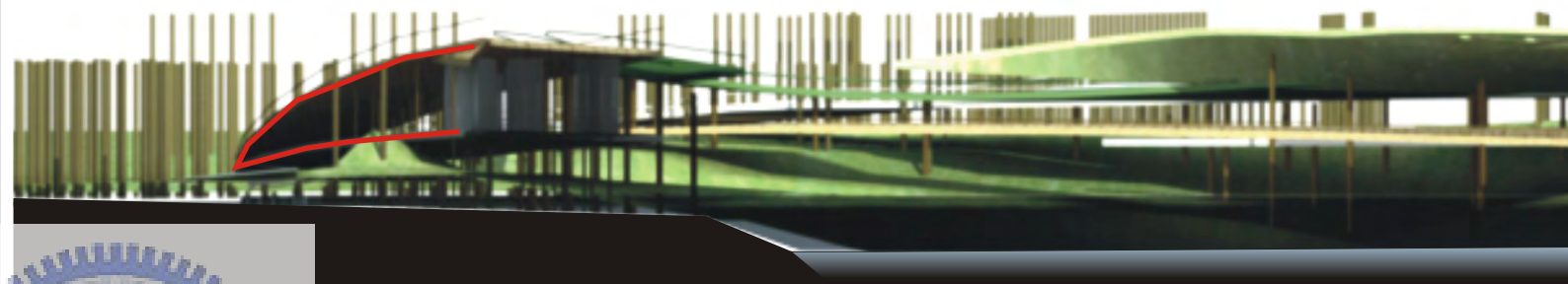


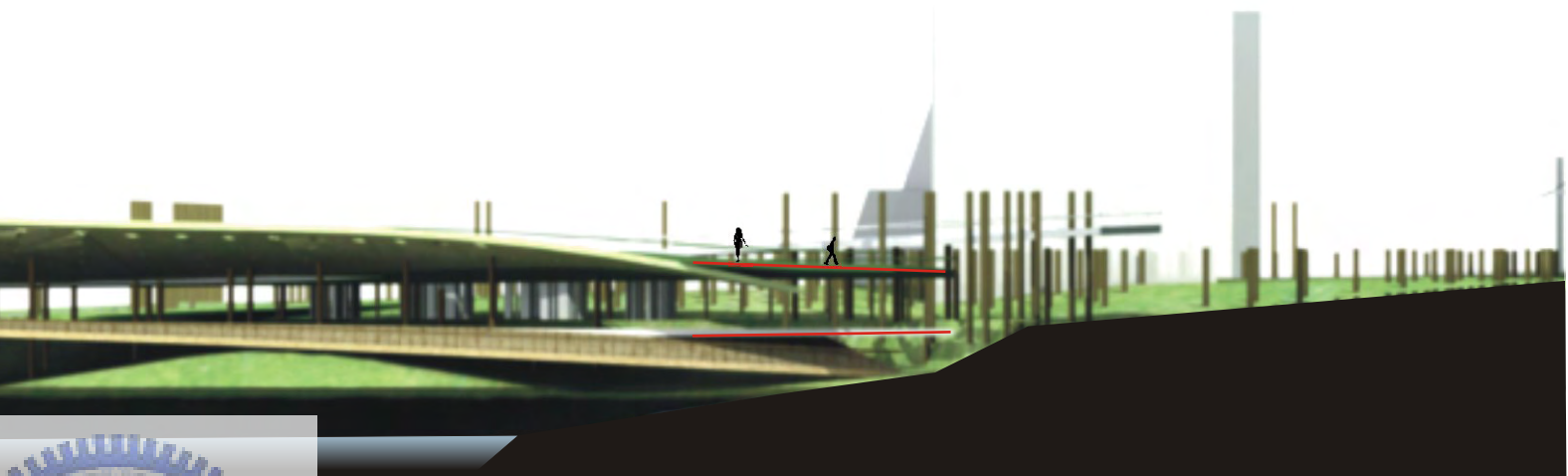
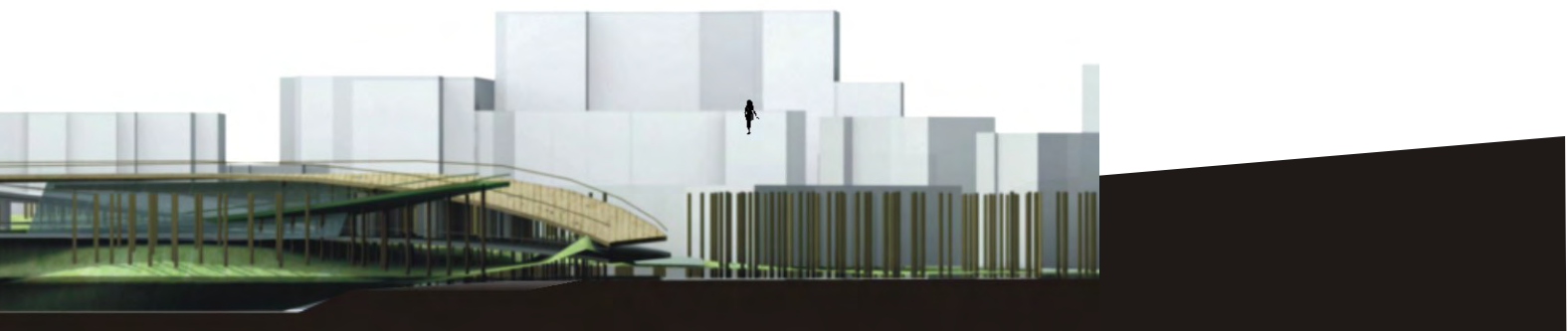
S : 1/150

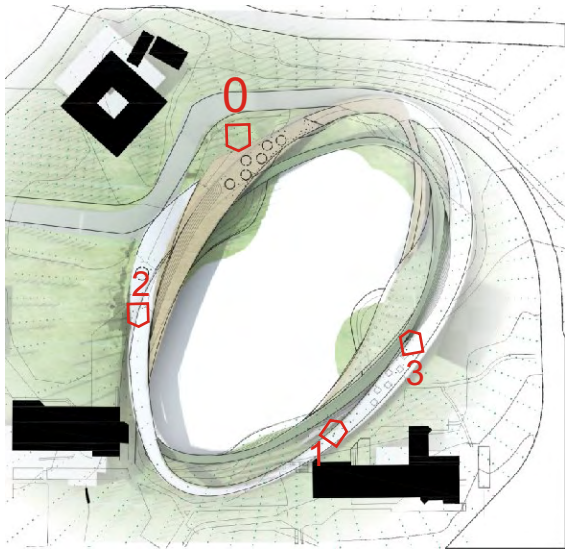


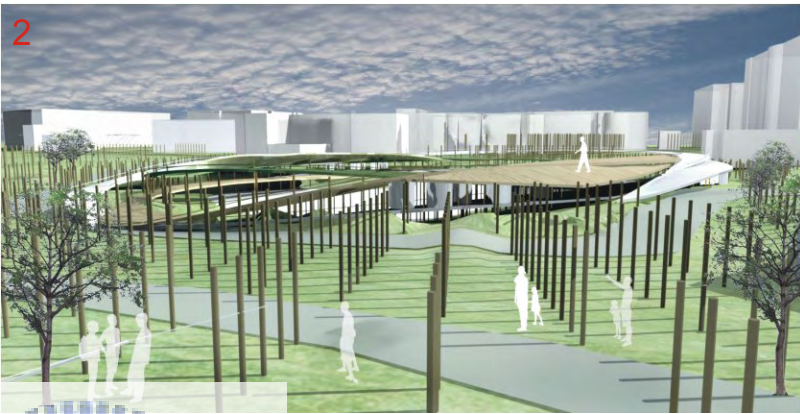
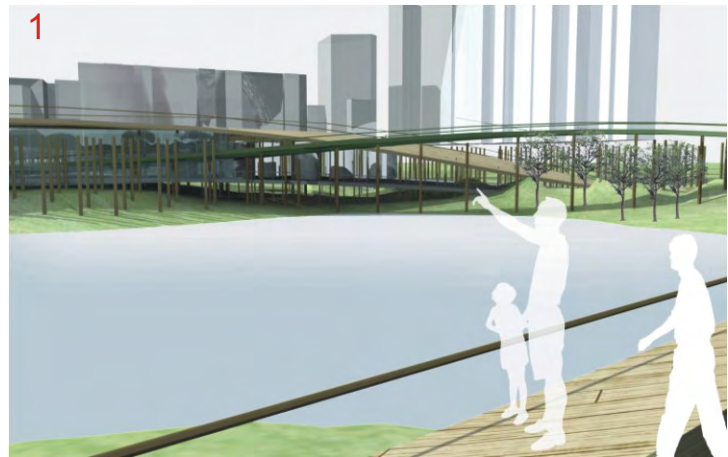
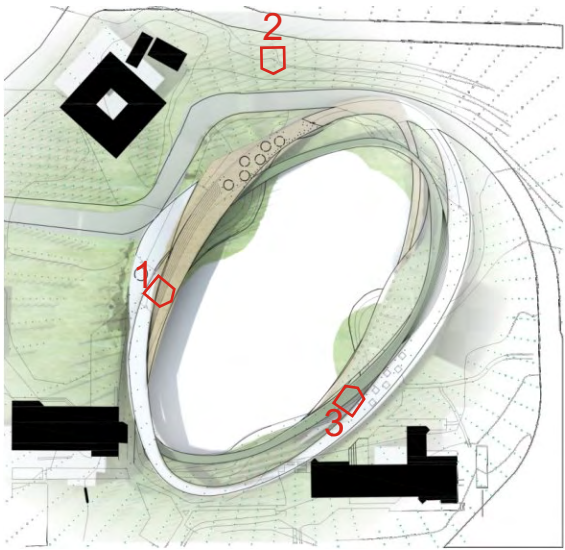


A-A









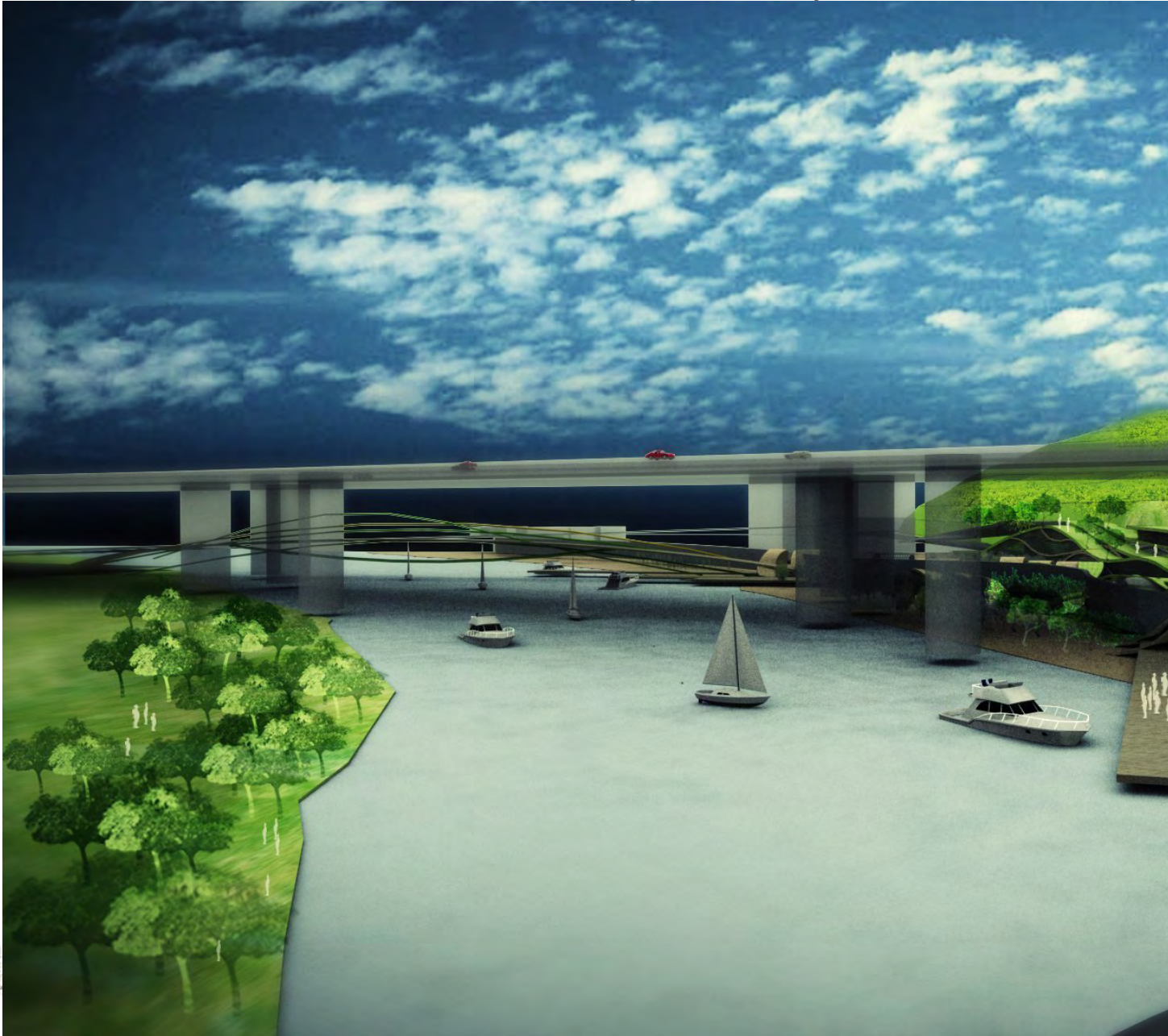
.....NEXT



City Muse

National Chiao Tung University /08

Between urban and Nature-redefine by artificiality



博物館「Museum」這個字源於希臘語「Mouseion」，意思是供奉謬思（Muse）是從事研究的場所。

由此可知，博物館「Museum」含有綜觀人類社會、文化成就。

在這個自然水岸、歷史場域、都市地景的交會點，成為台北城市博物館的位置也讓場所自己本身說自己的話。

透過這個博物館重新的找回了都市和土地之間的關係。

The word "Museum" originally comes from Greek "Mouseion". The meaning of it is to sacrifice Muse and a place for doing research.

Thus it can be seen that museum indicate to a comprehensive survey of human society and the achievement of culture.

At this cross point of natural shore, historical field and urban landscape, the Taipei city museum make the places can have their own words.

The relationship between city and land was found again through this museum.



Cultural Landscape

自然地區是媒介，文化是原動力，文化地景是結果。

新的地景將疊置到舊有地景殘骸上。

文化台北
地域台北
文化地景

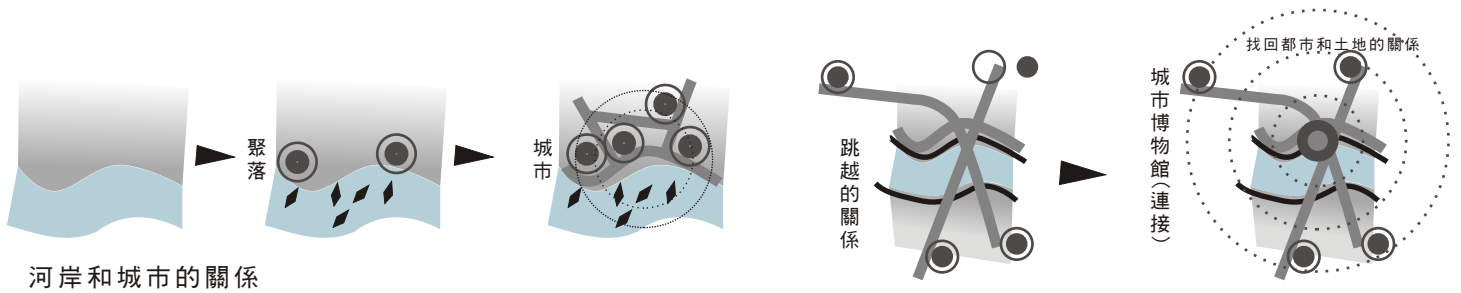


台北城市發展



文化的聚集





河岸和城市的關係

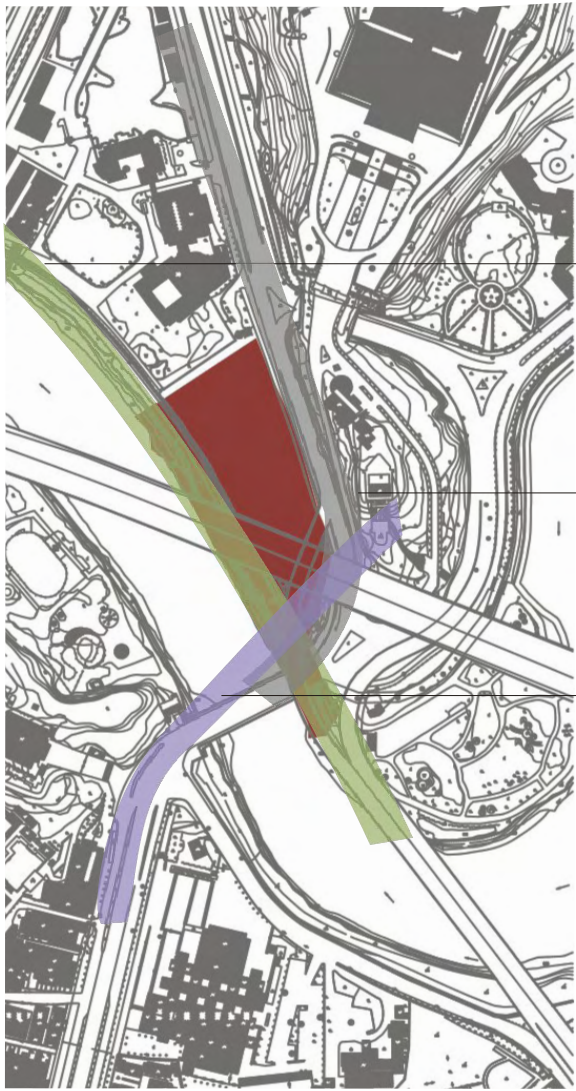


台北河岸和城市的關係



從歷史角度看圓山可以追溯千年複雜的故事，從空間的角度看圓山其複雜程度不遜色於歷史，從史前圓山遺址到日治時期殖民統治象徵，再到今日立體交通接到樞紐，圓山不論在人類活動的歷史及土地使用交通設施，幾乎都是台北都會區之冠。





Natural shore

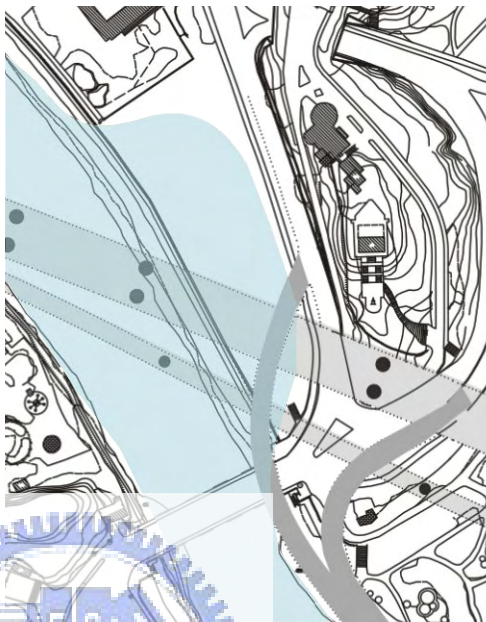
Urban landscape

Historical field

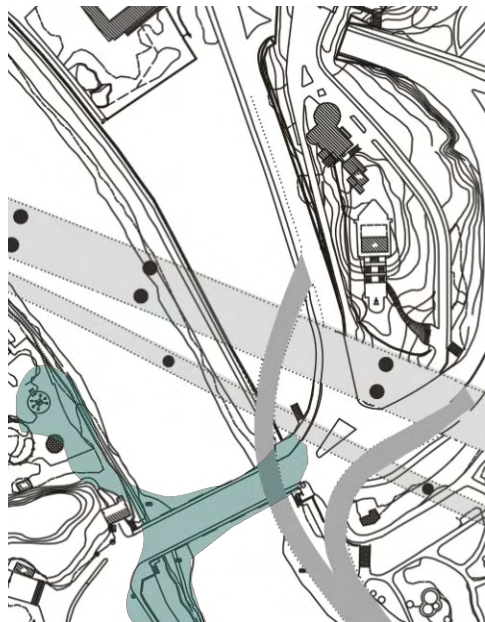


水陸交會節點
自然地景交會點

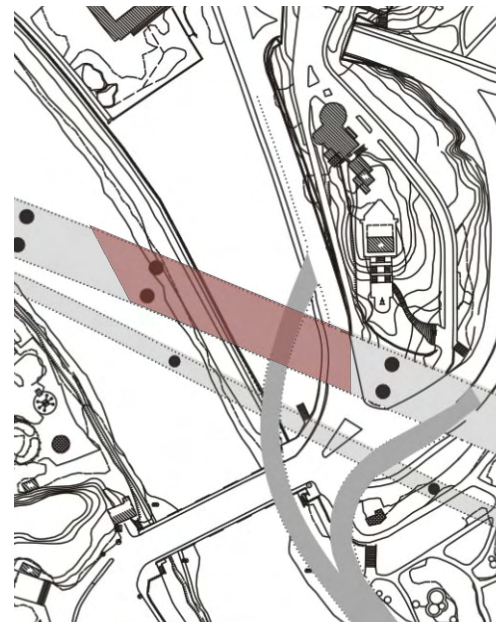
自然水岸



都市地景

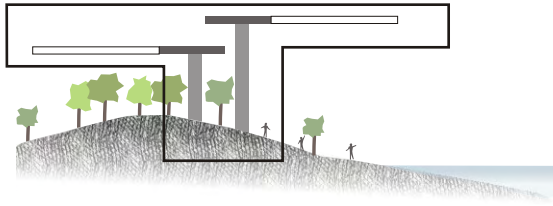


歷史場域

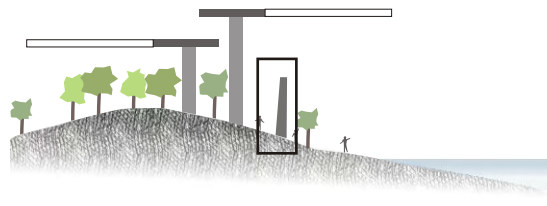




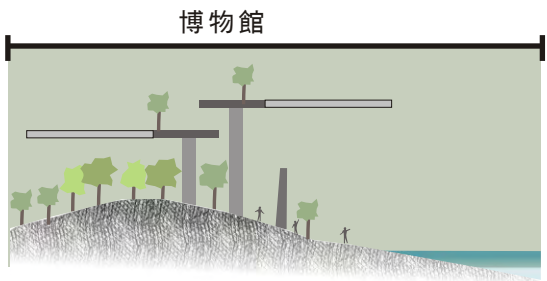
1600年



1970年



1980年



博物館

2011年

新生高架橋

堤防

基地範圍

中山高速公路





台北地景館

大廳

綠蔭誠品

生態館

植物園區

生態棧



平面配置 S:17800



