

Nature Hill

Chalmers University of Technology/08-09

Between evolvement of urban and landscape-redefine the relationship



THE NATURE ON THE ROOF LINK WITH THERE NORTHERN MOUNTAIN VISUALLY



08-9-12 Organization
Nature Hill



哥特堡是瑞典的工業大城，這工業城隨著產業的改變，本來的工業港變成了都市邊緣。

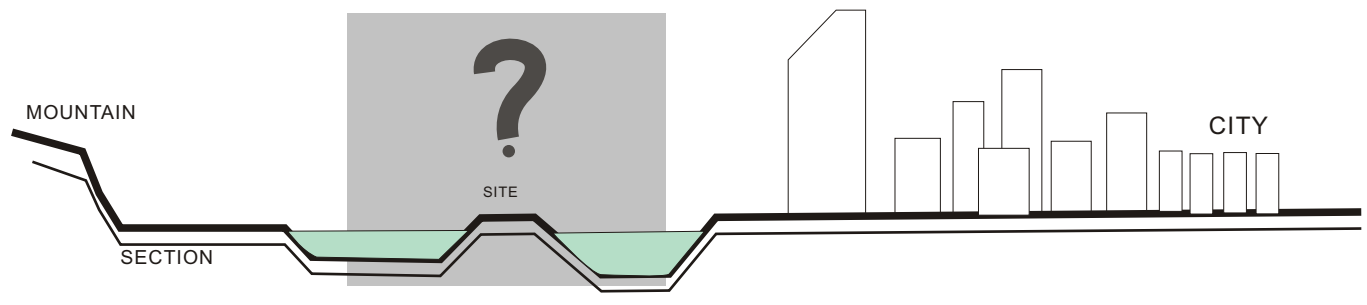
想透過這設計，重新將自然和都市連接起來，將都市的商業空間延續到基地，版的上面成為新的都市廣場，在上面用不同的高度重新看都市。而版下面商業空間可以重新看自然，這片版的樓梯也是結構，樹桶也是結構，結構和形式是一起的。

這一塊版的平面也烘托出後面這座山的起伏，將山是和基地用視線上連接起來。從都市看基地，透過一片版改變了原本自然和都市依分為二的關係。

Göteborg is an industrial city of Sweden. As the industry changes. The industrial port becomes the edge of the city. Through this design .I want to reconnect nature and urban . There will be a new city square on the upperside of the board .The commercial space of the city will be extenedoed to the site. On the board .We can have a from the commercial space under the board. Besides stairs, the cover around the three are also parts of the structure to support the floor. The structure and the form are indicate to the same thing.



Structure concept



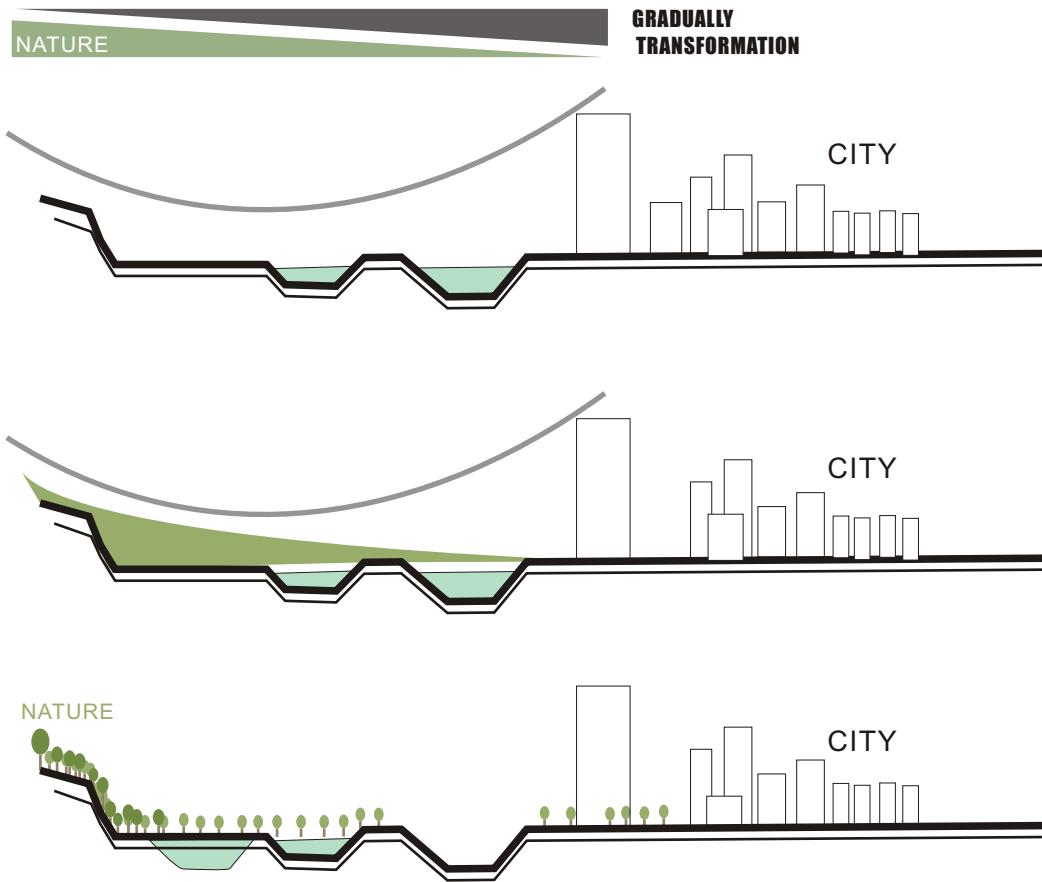
Site image

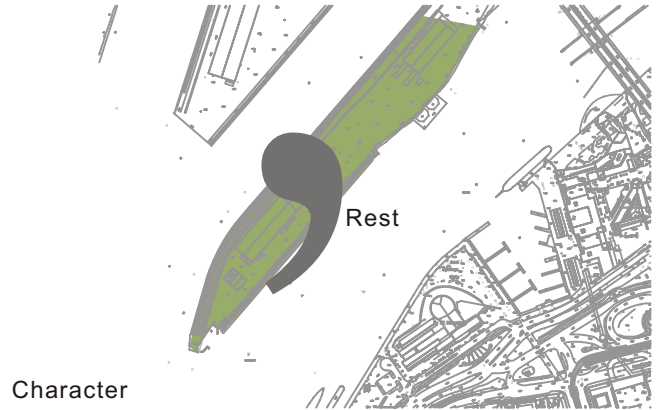


Matter.Space.Structure

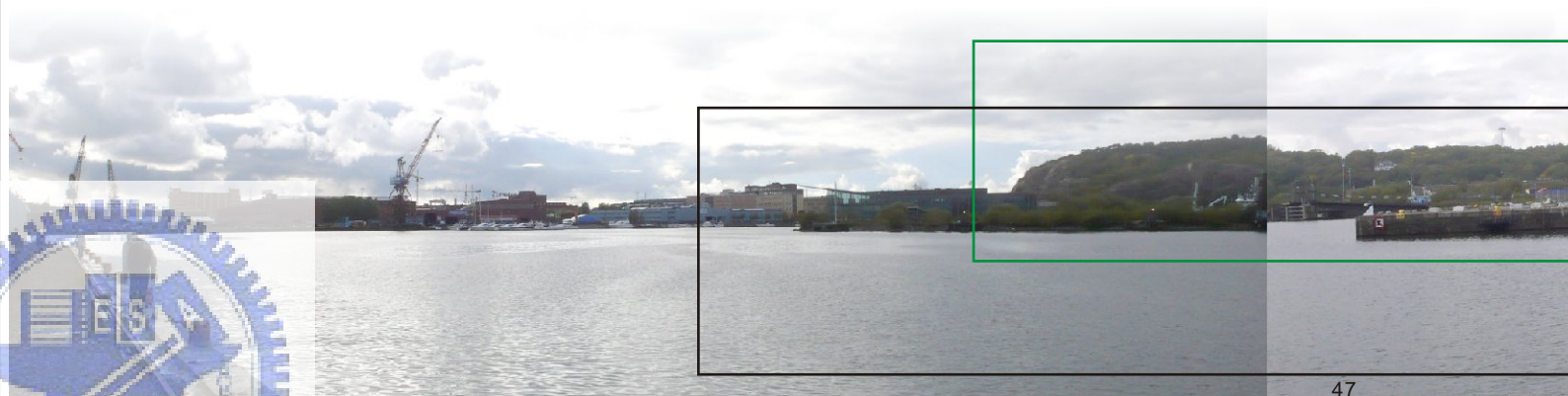
Site image

Structure concept

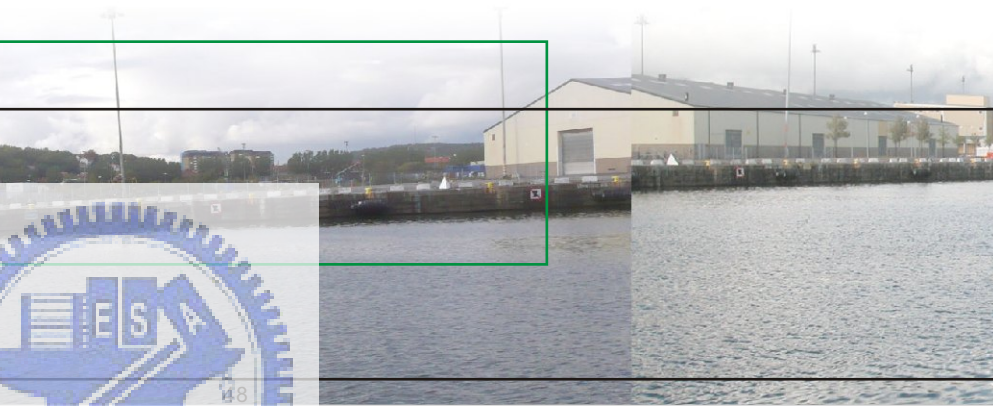
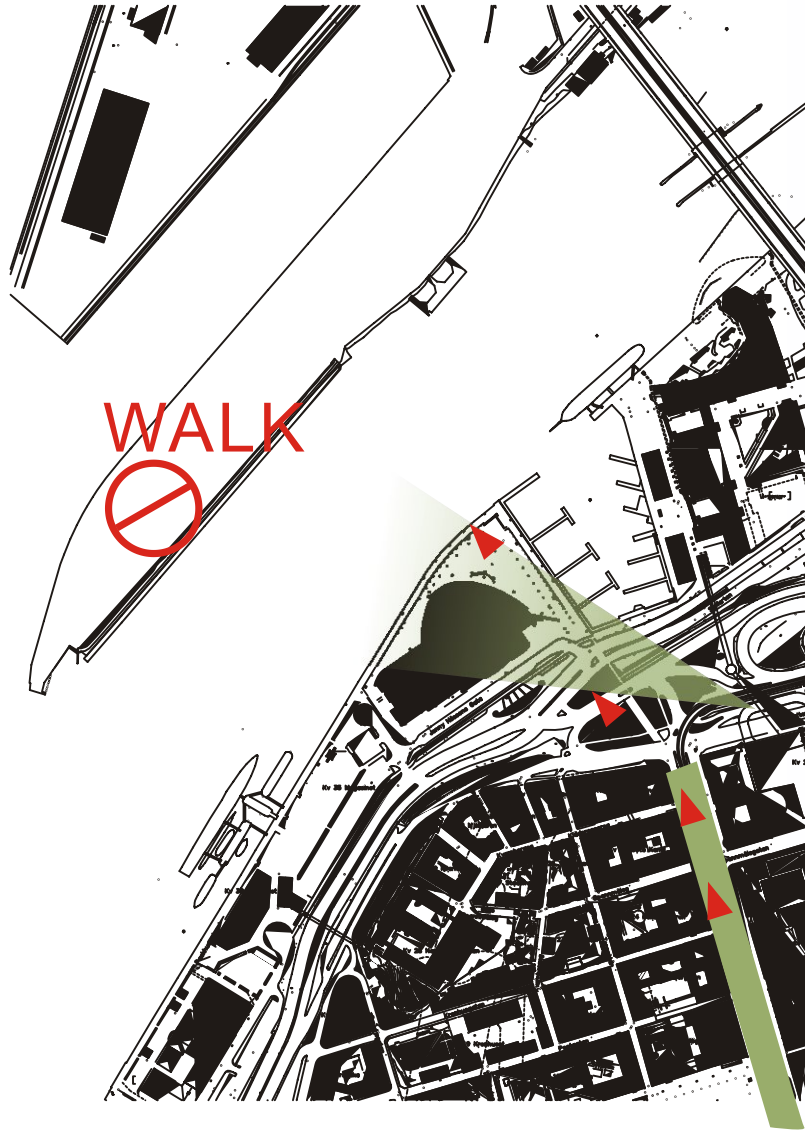




Character



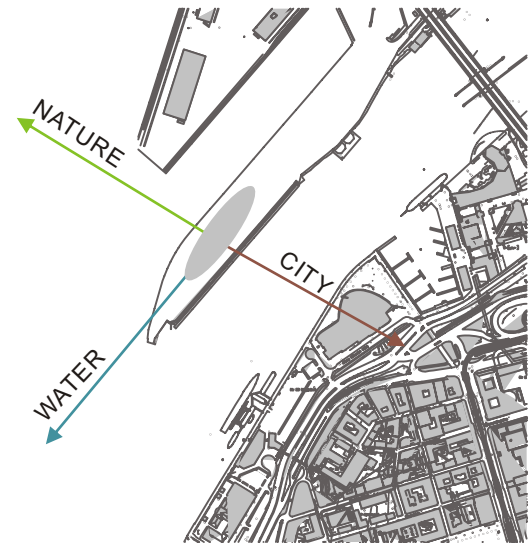
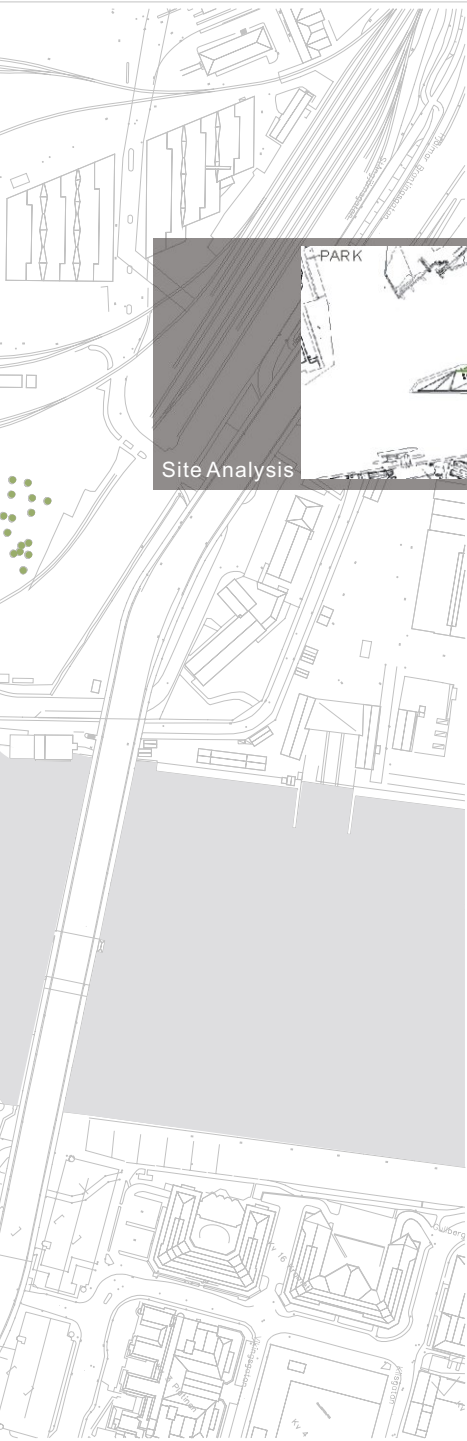
Matter.Space.Structure
GRADUALLY
TRANSFORMATION



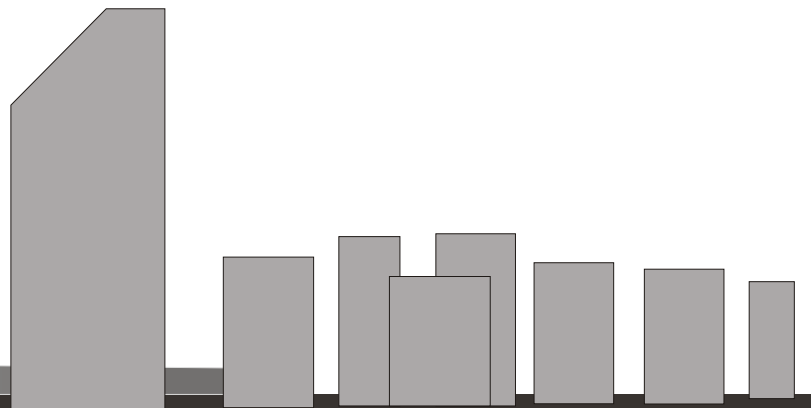
SITE

Site plan



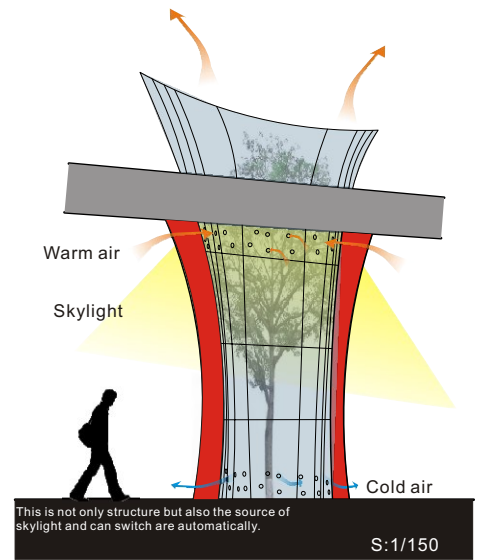
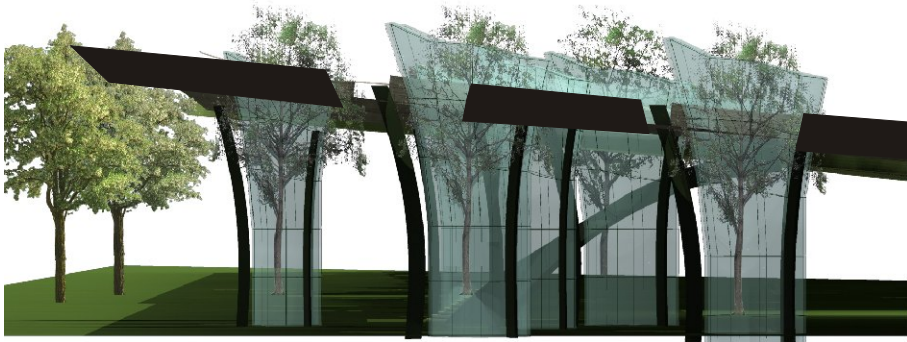
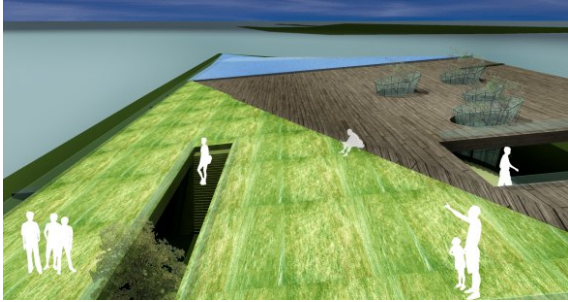
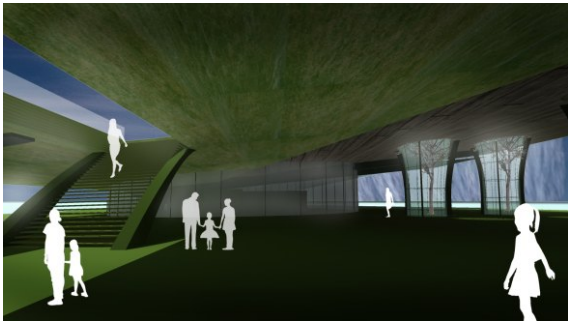


Upside is the open space of city

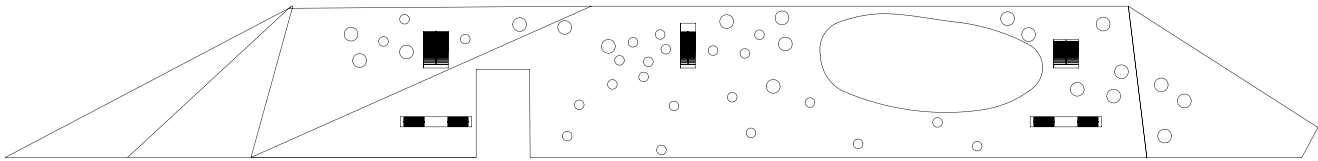


Underside is the extension of the city for shopping exercise and experience in nature

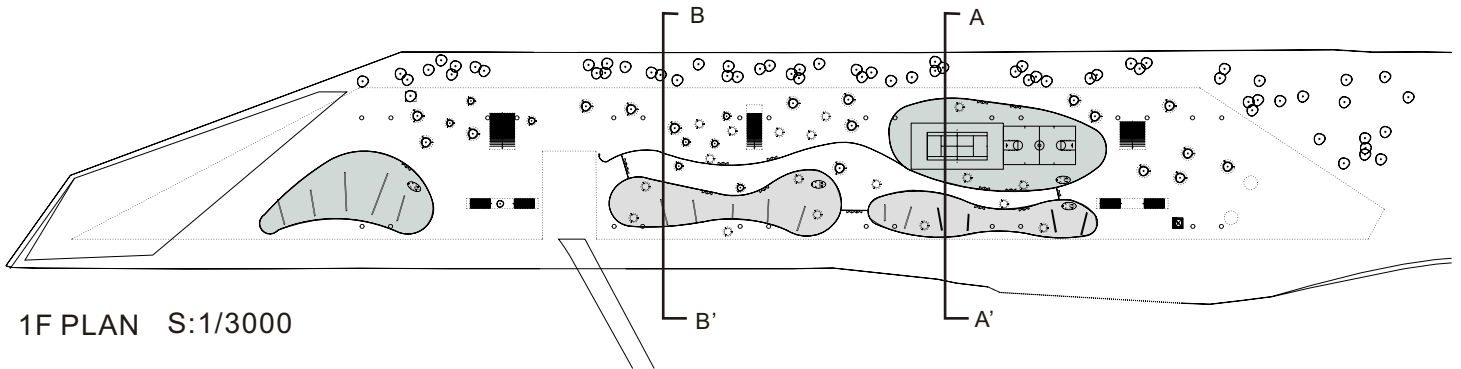




1F PLAN
details
Structure

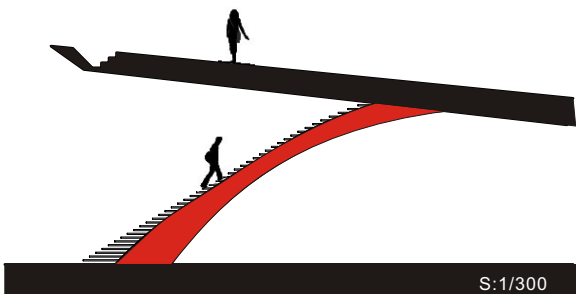


SHIPPING
EXERCISE

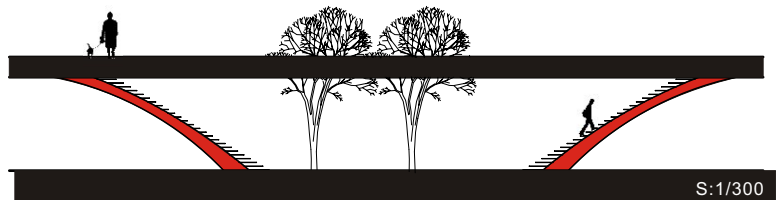


1F PLAN S:1/3000

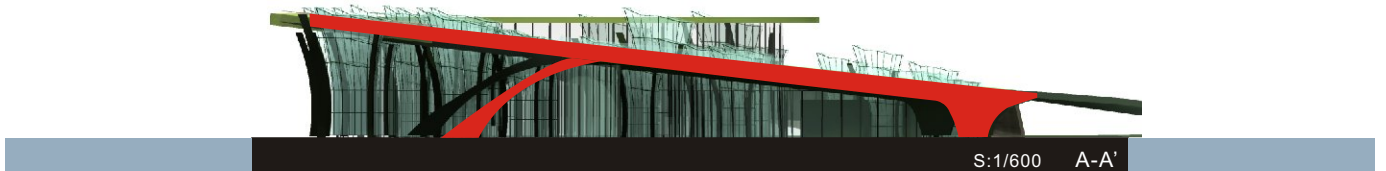
NATURE
GTM



S:1/300



S:1/300

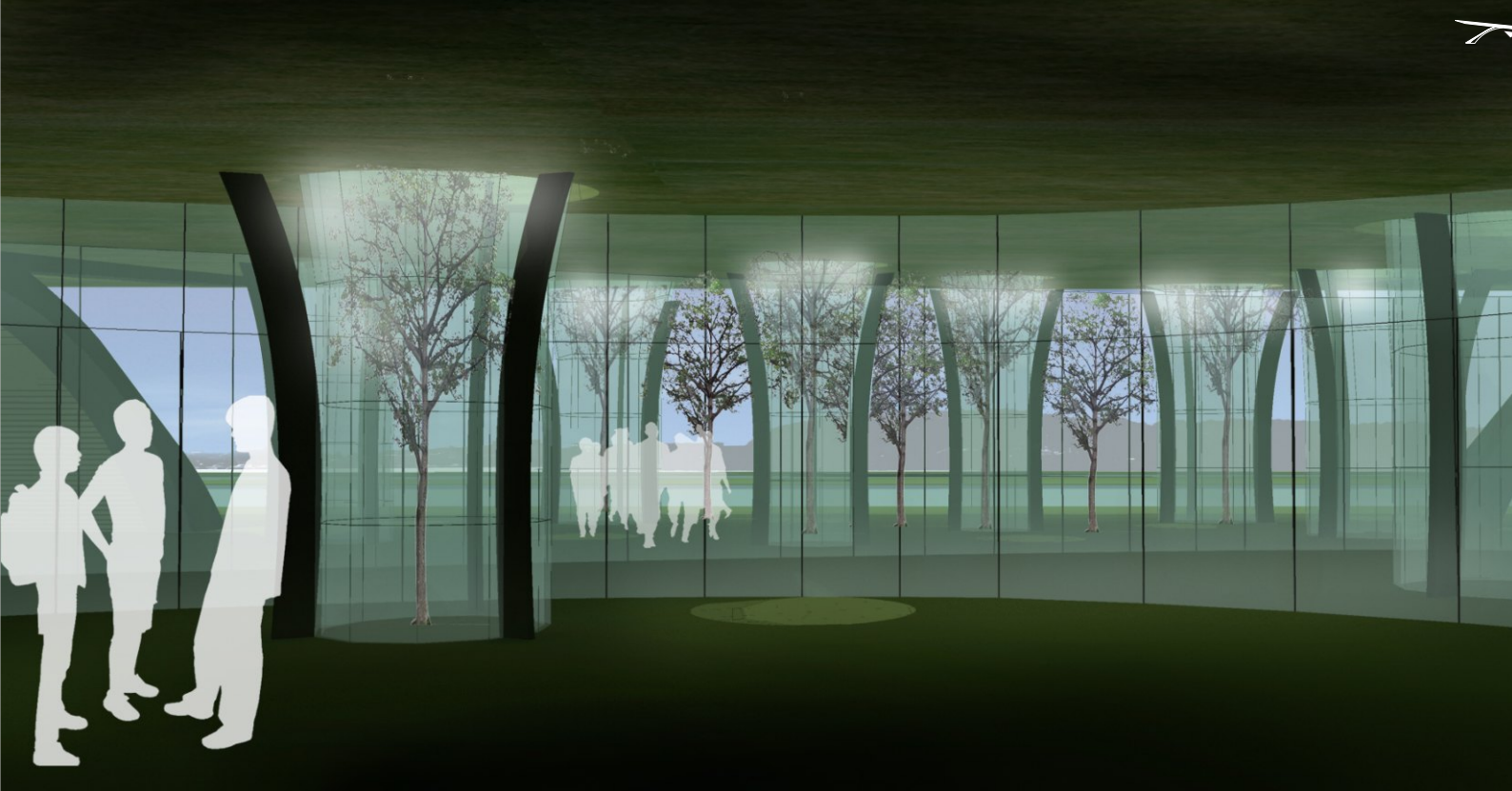
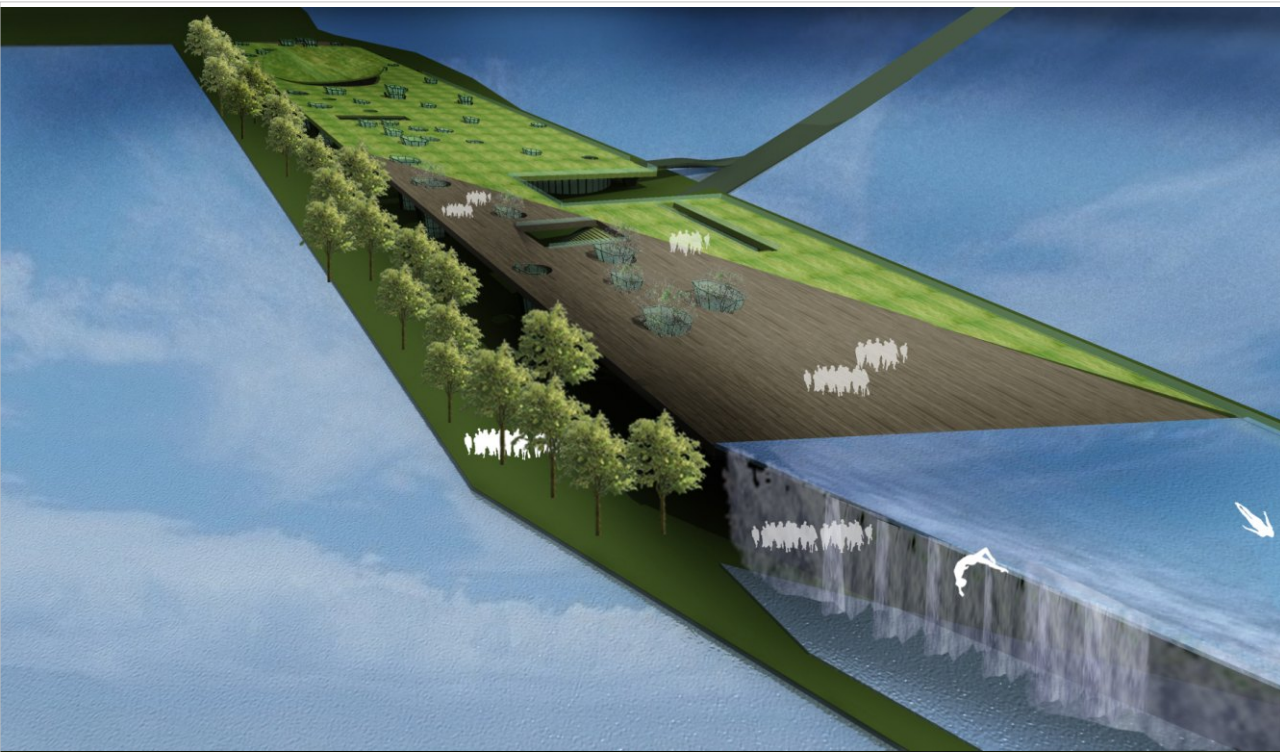


S:1/600 A-A'



S:1/600 B-B'



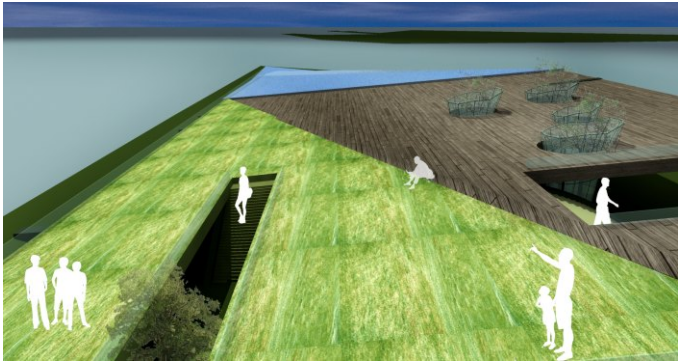


SUMMER

AUTUMN



Perspective



Grass



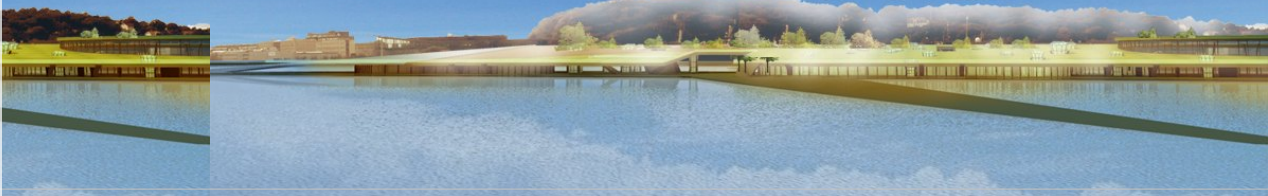
Timber

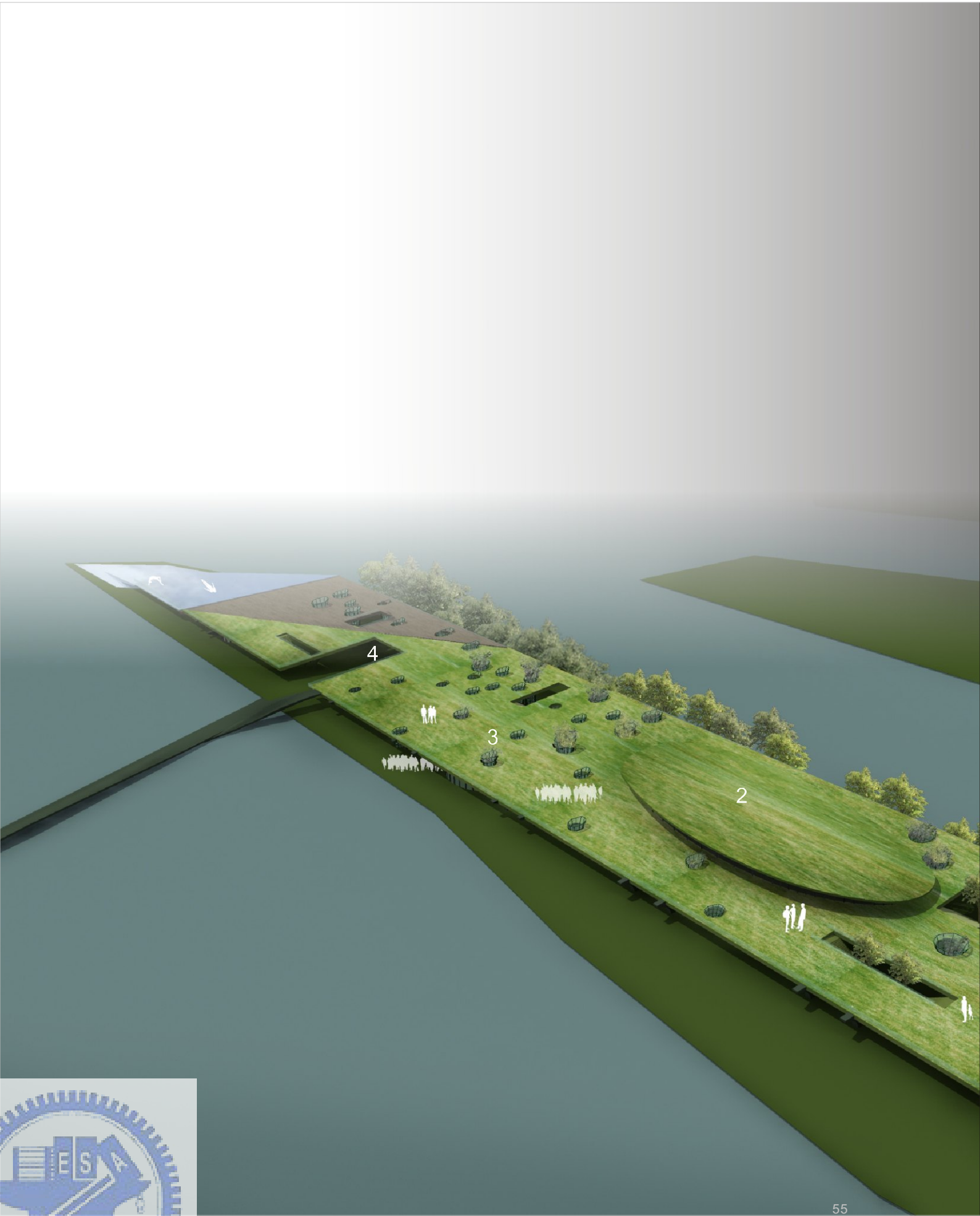


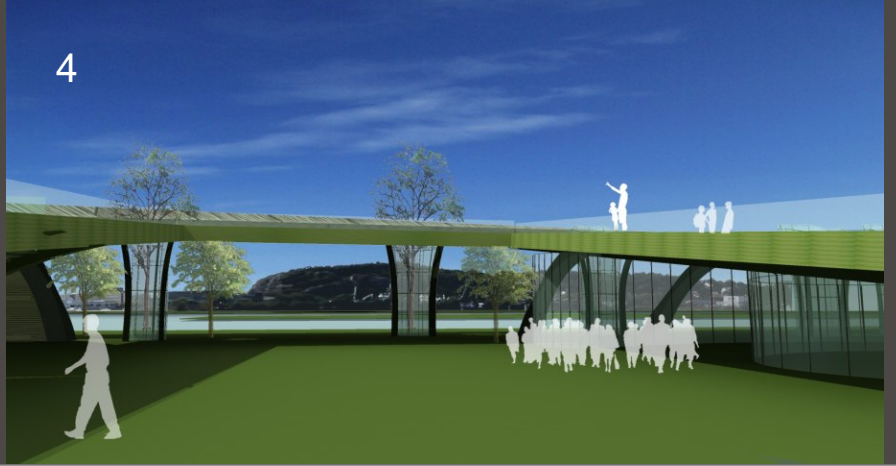
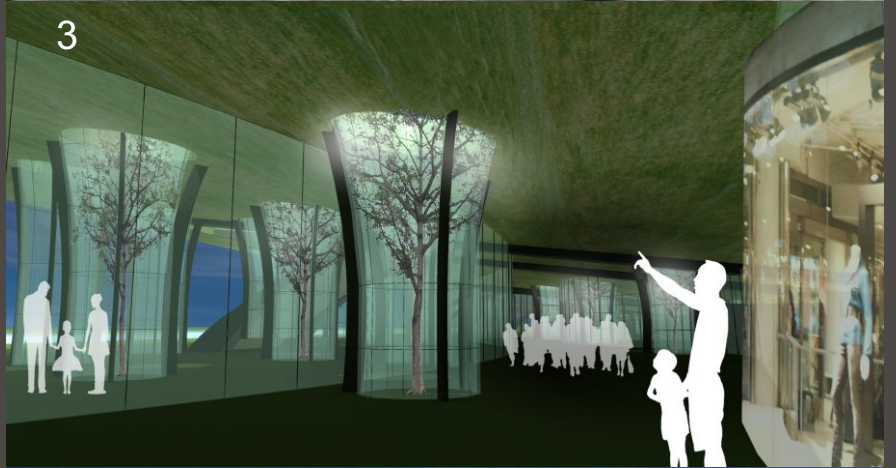
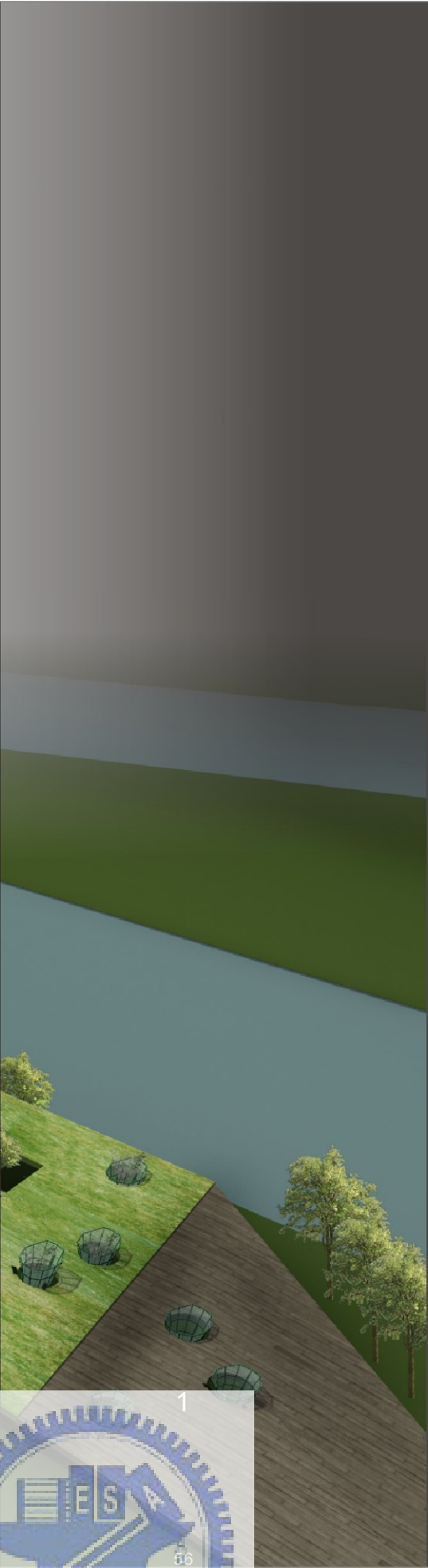
Water



WINTER







INVOLVE

Chalmers University of Technology/08-09

Between industry and sustainability-redefine the relationship between the development of industry and sustainable environment.





When Volvo combined with the site there's new chances.

The spirit of Volvo is sustainable and resource-reducible.

There are railway, road and river. Use an architecture to integrate these three elements to create a landmark.

To create a green belt for walking, ecological pond, and wind-powered electricity.

There are many programs in the site. These programs correspond to the relationship of the.





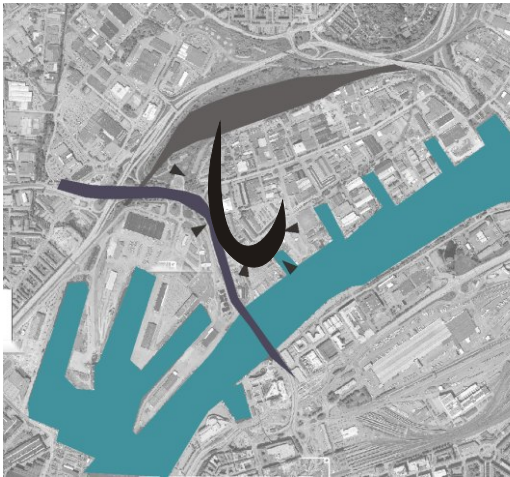
New chance



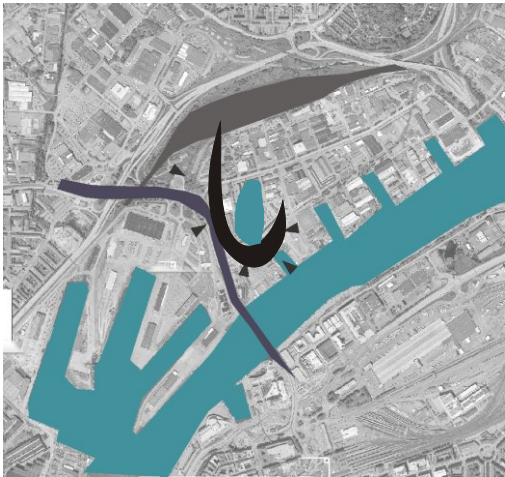
**New chance
Resource
Reducible**



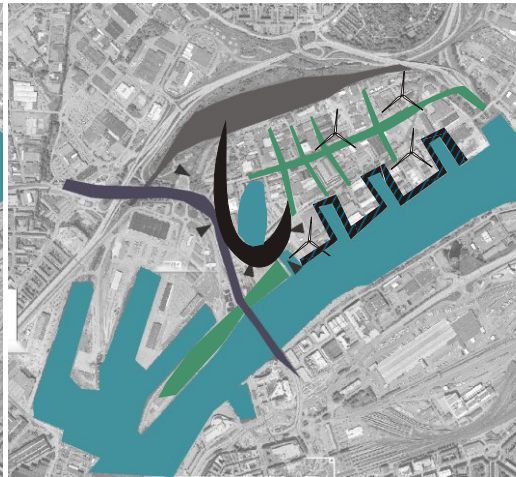
The spirits of Volvo is sustainable and resource-reducible



將鐵路道路水案重新連結



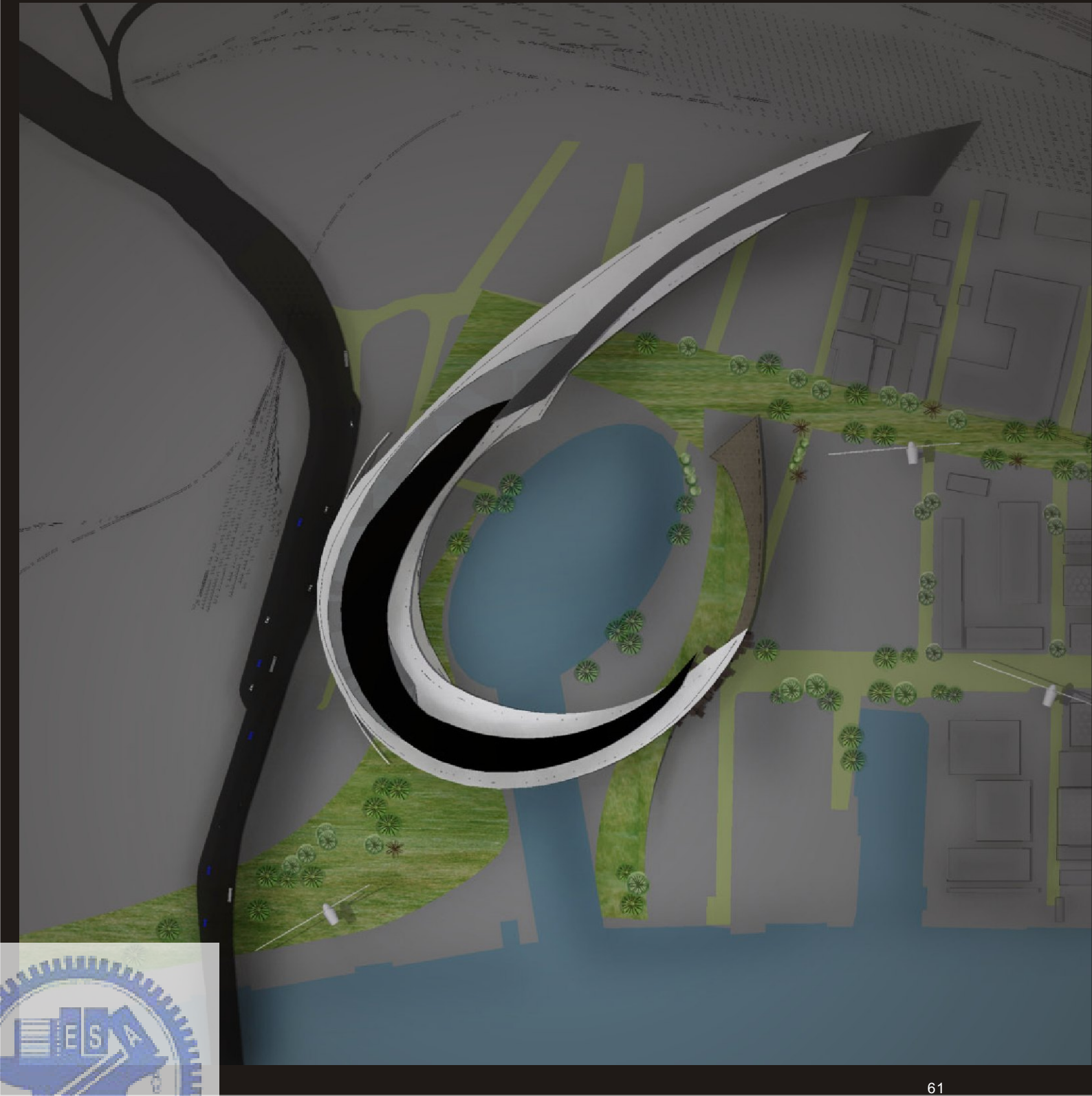
將生態水池引入基地

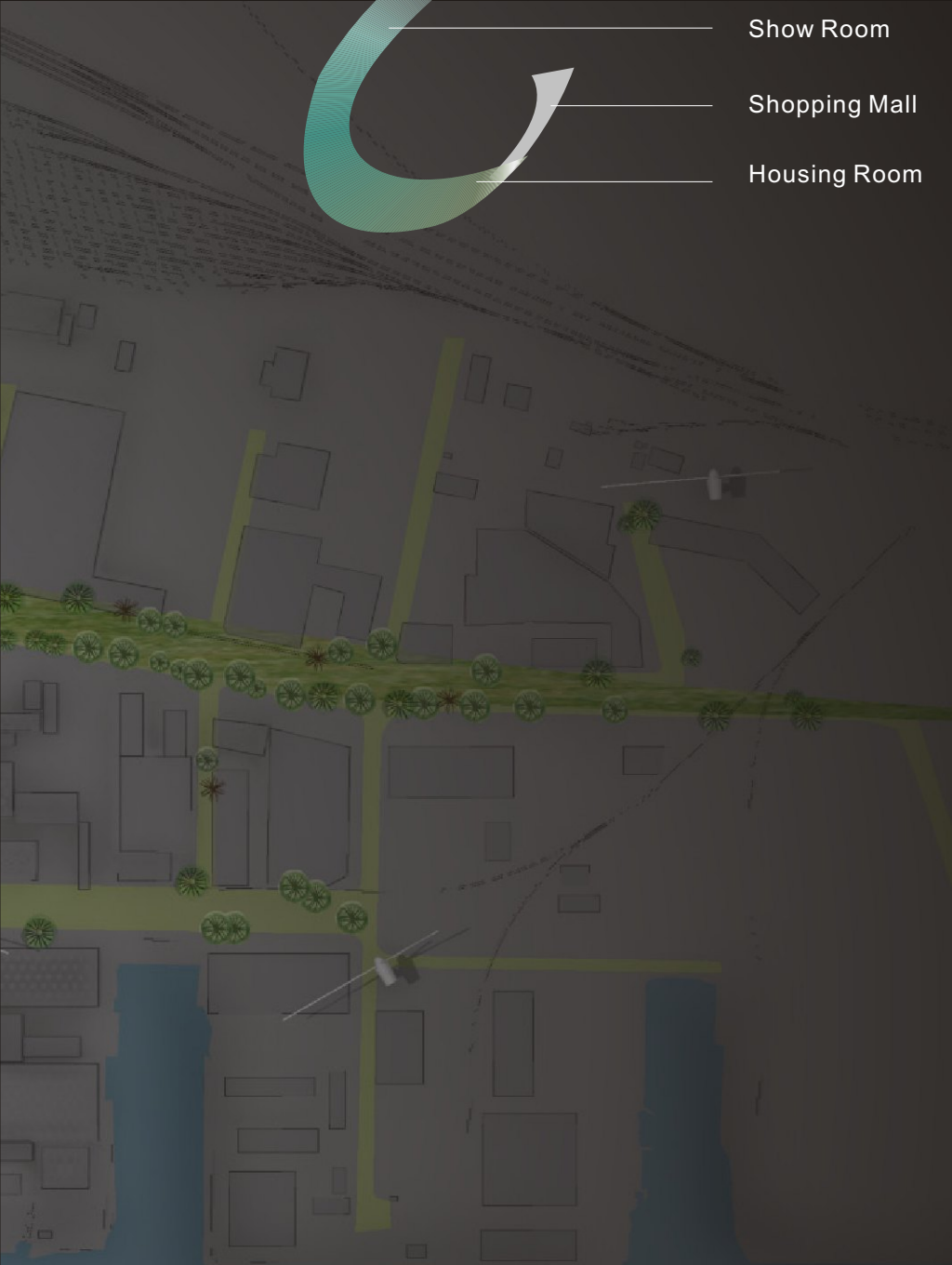
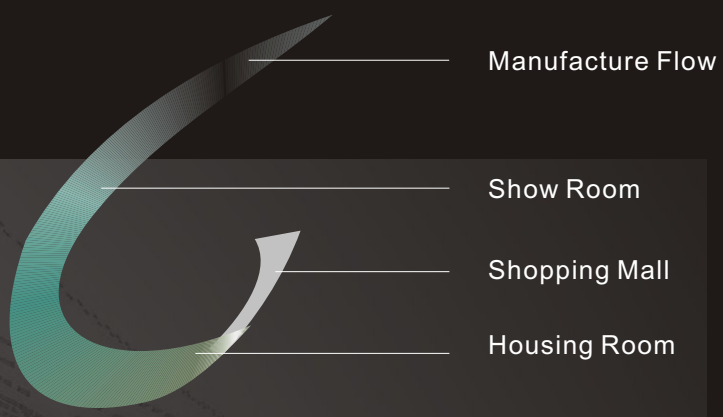


生綠帶的聯結永續的發展



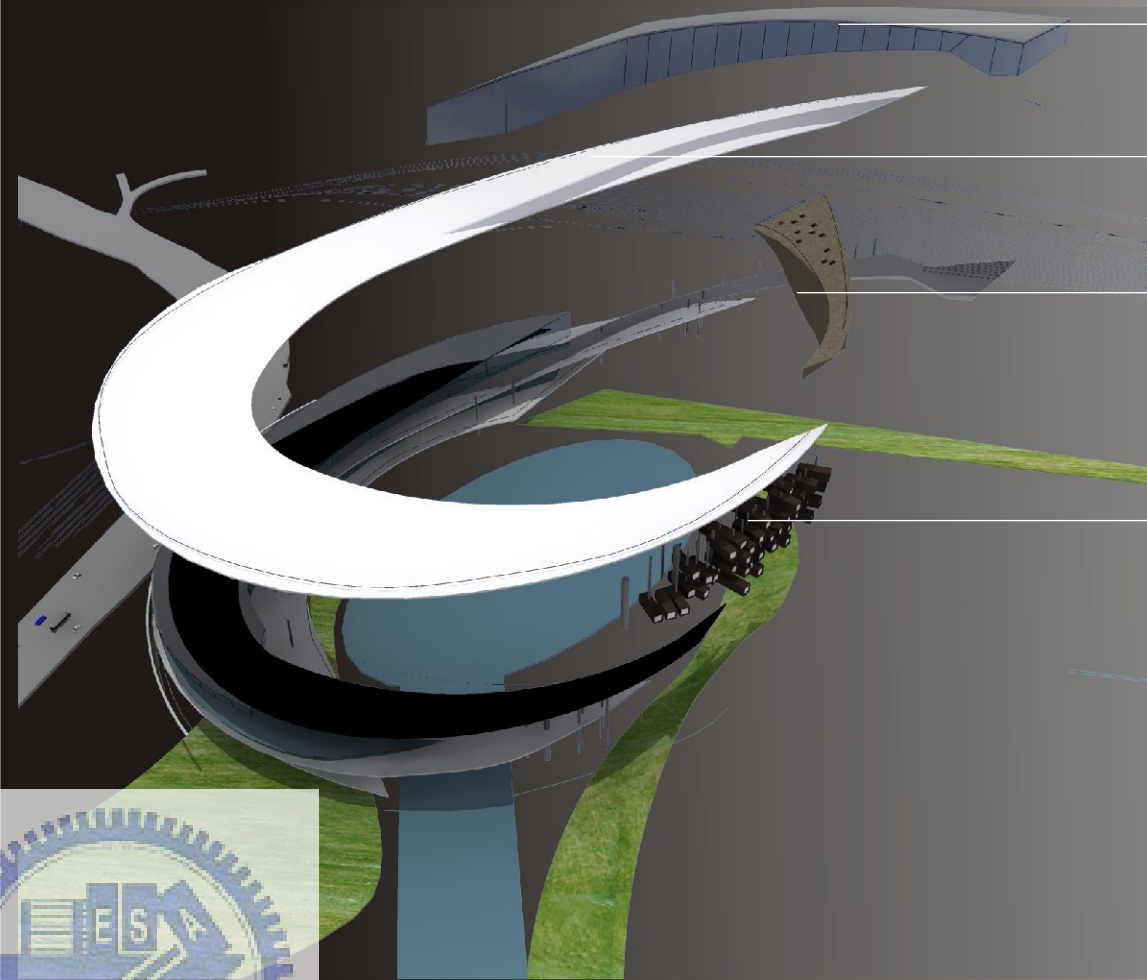
These programs are correspond to the relationship of the site





Program





Manufacture Flow

Show Room

Shopping Mall

Housing Room



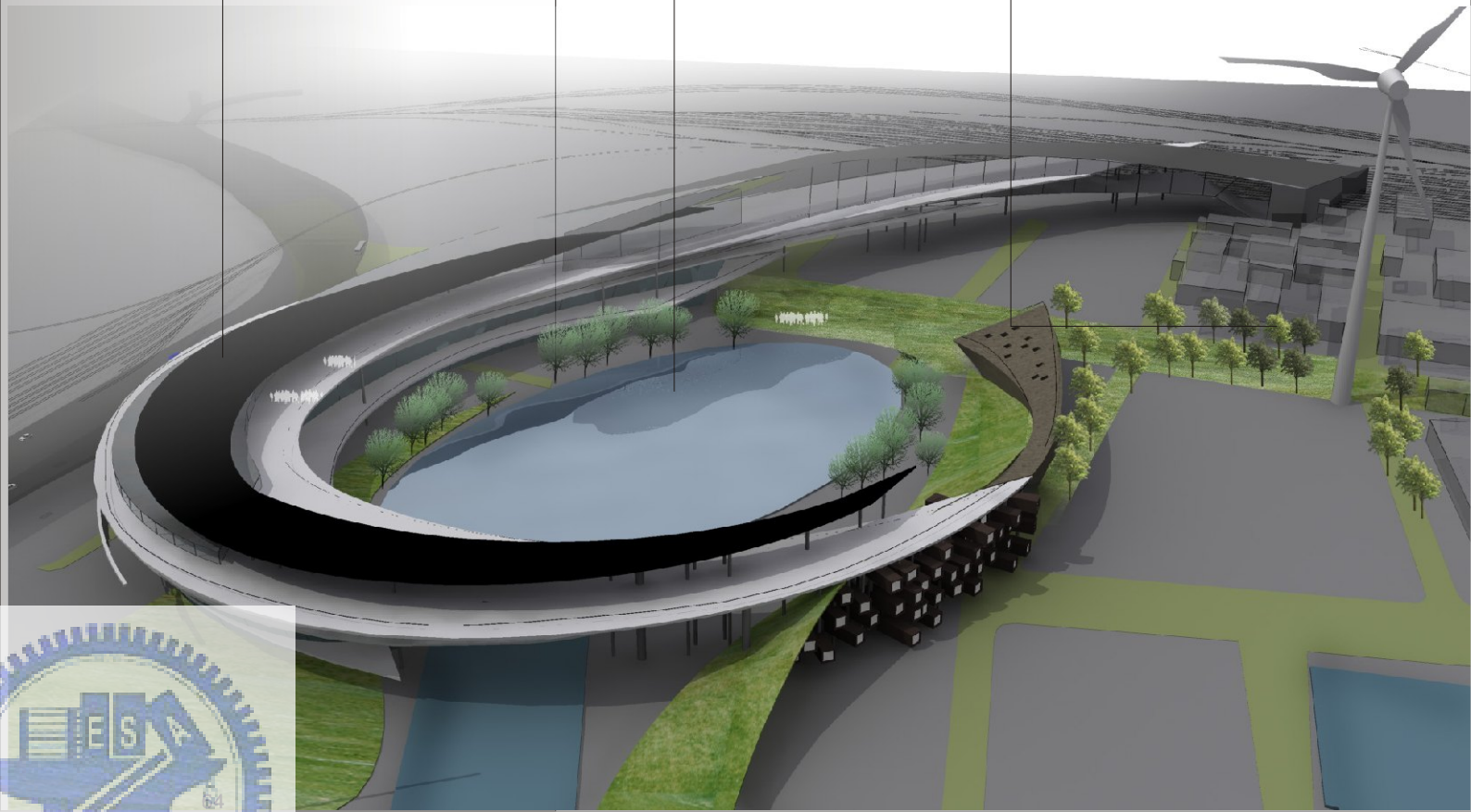
explain

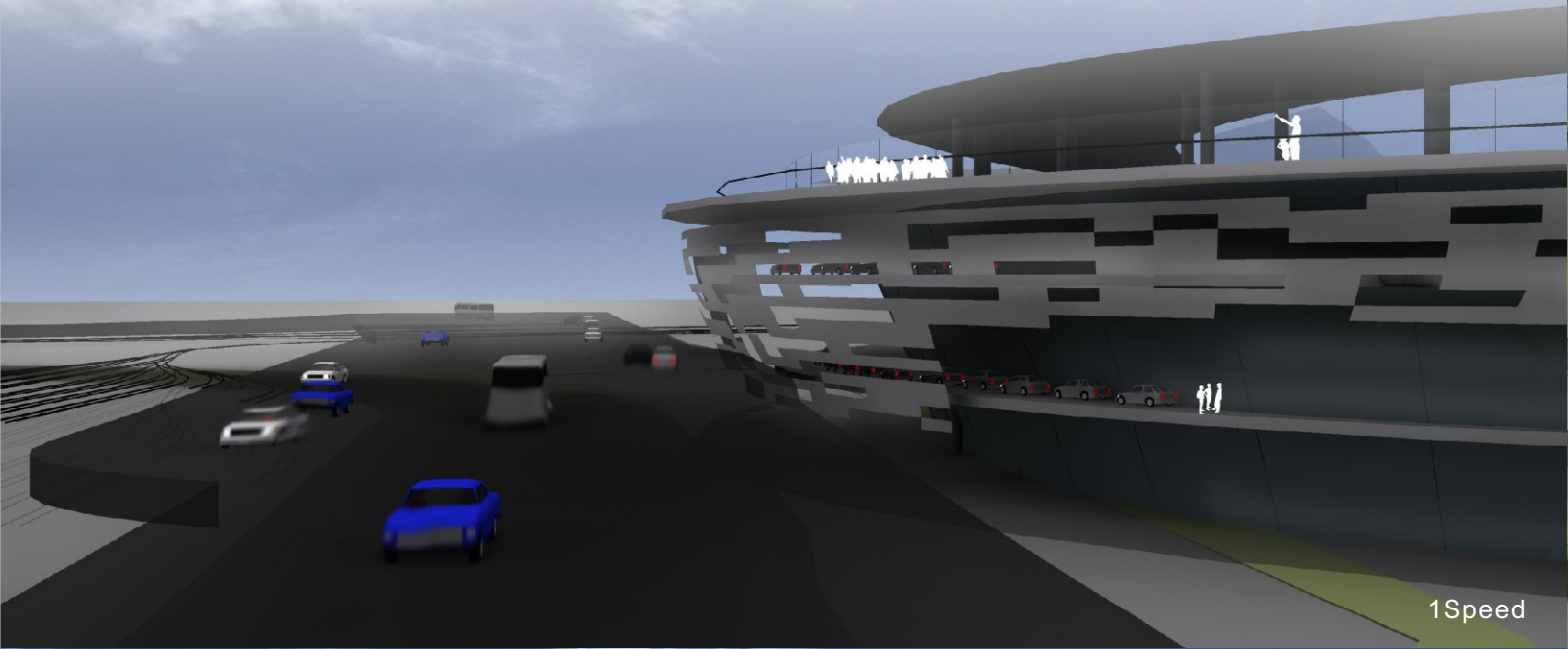
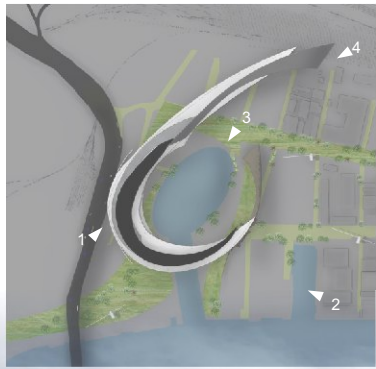
Solar power energy

Ecological pond

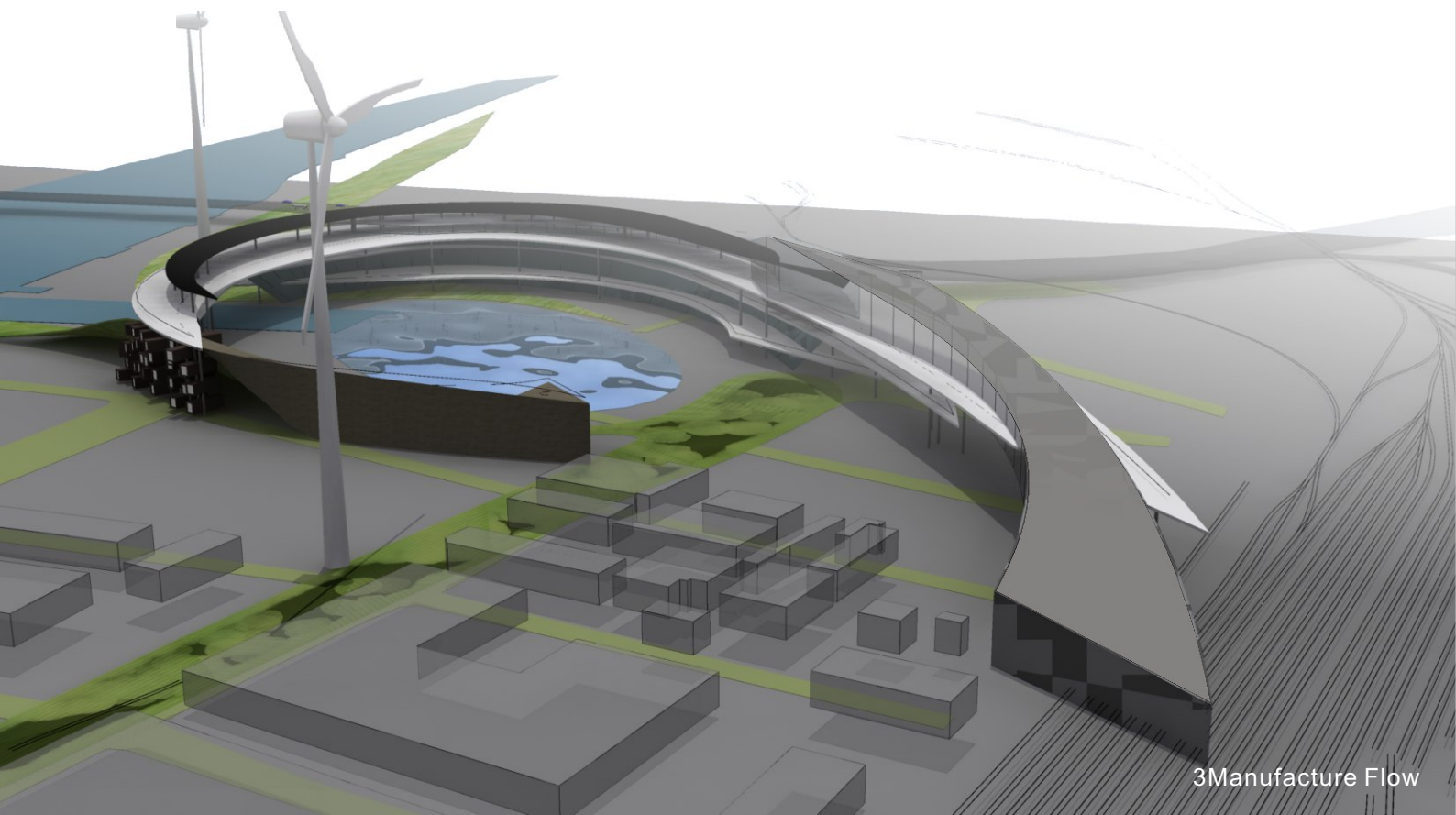
Greenbelt

Wind-powered electricity





Perspective



3Manufacture Flow



4Show Room





Appendix

2009高雄行動創意國際徵選(入圍)



生態工廠 & 新鮮生活

生態城市的創造 · 舒適自然的生活網絡

以生態城市為都市口號的「新高雄」

Eco-City

Eco-Manufacturing & Fresh Life

Creating eco-city, comfortable and nature life in Kaohsiung.

The concept is creating eco-space from Kaohsiung city center and people would live with organisms together. The city planing is providing comfortable space of quality and creating fresh city image. On the other hand, it's also providing the nature education environment for students and cooperating with schools to keep the city space sustainability.



Carbon emissions In the world 2004 Taiwan NO.18 In the Asia 2004 Taiwan NO.1 (Kaohsiung 20.52%)	
The average carbon dioxide emissions	
Kaohsiung (2004)	34.72t./pre
Taiwan (2004)	11.1t./pre
OECD country (2002)	10.96t./pre
Global (2002)	3.96t./pre

How to give a better life for Kaohsiung citizen?



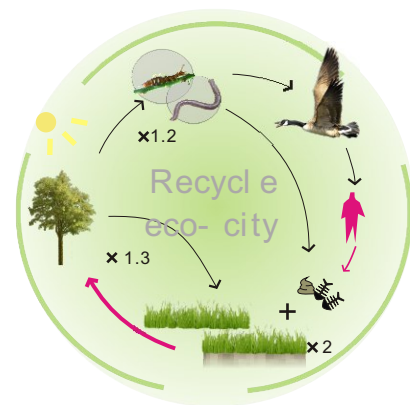
New eco-city operation system

Sustainable system
 Saving the earth and biological habitats, we need new system.



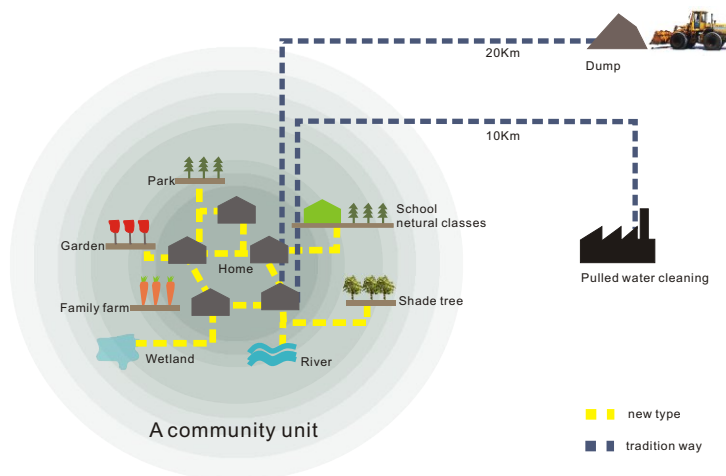
New conception of the Food Chain

New: balance food chain system
 Human should be added to the cycle of nature food chain. The higher population density and land will provide more nutrients. Become a part of the ecological cycle



City recycle circulation in traditions and new type

City recycle circulation in traditions and new type





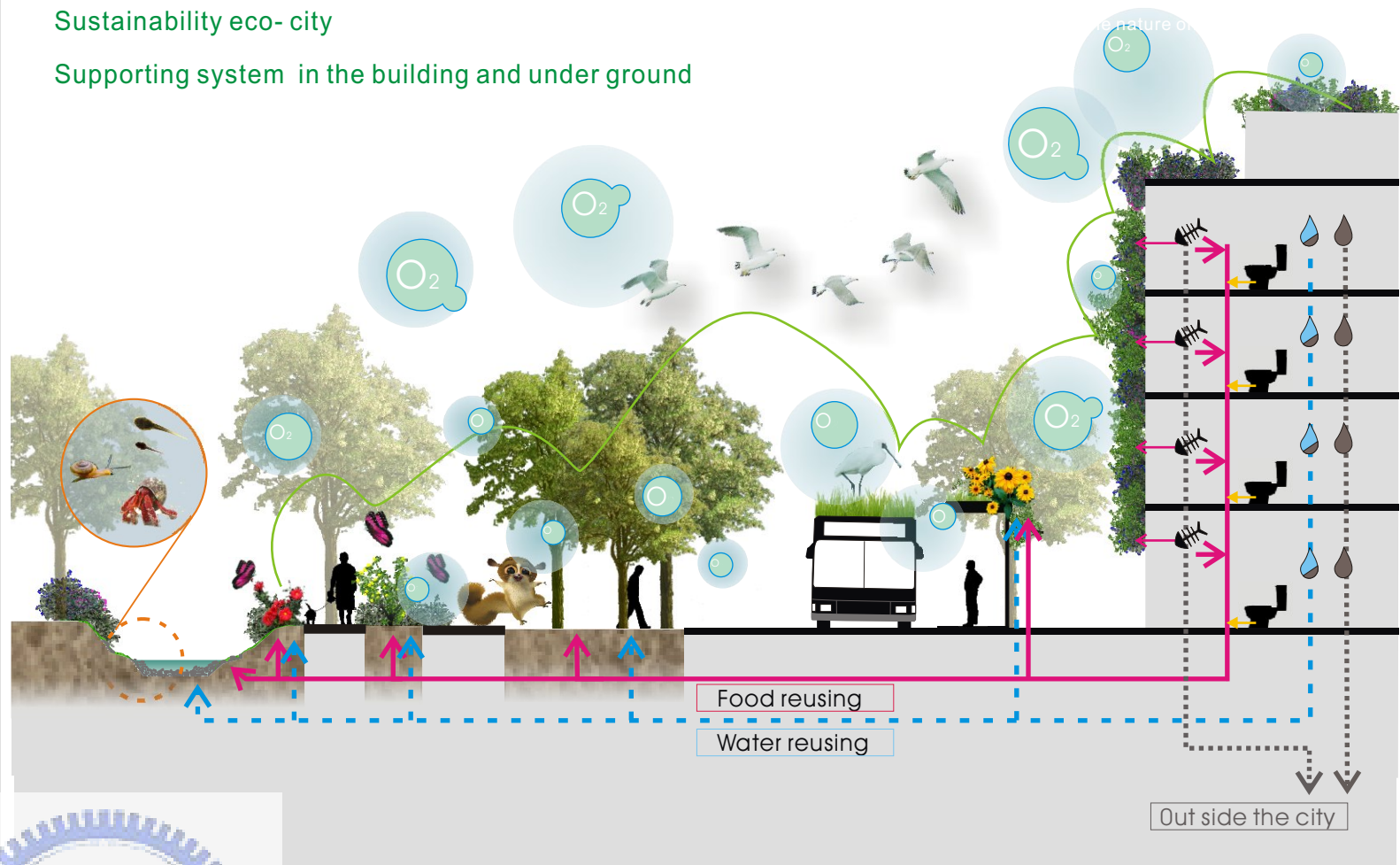
Biological diversity and cooperating with schools

1. Combining the space of campus and streets
2. Preserving the urban eco space by "school adoption mechanism"
3. Educate purpose



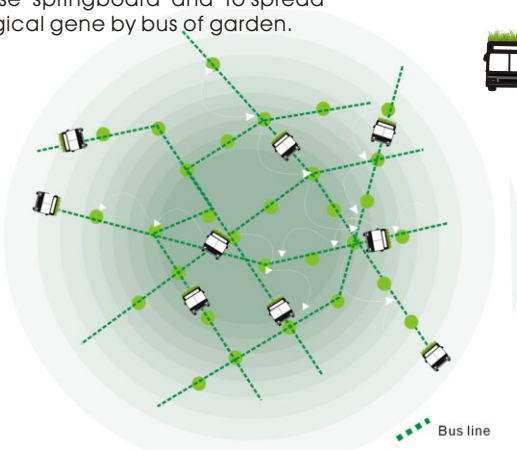
Sustainability eco-city

Supporting system in the building and under ground



GardenBus

Infill the ecological gap in the city. To increase springboard and to spread ecological gene by bus of garden.

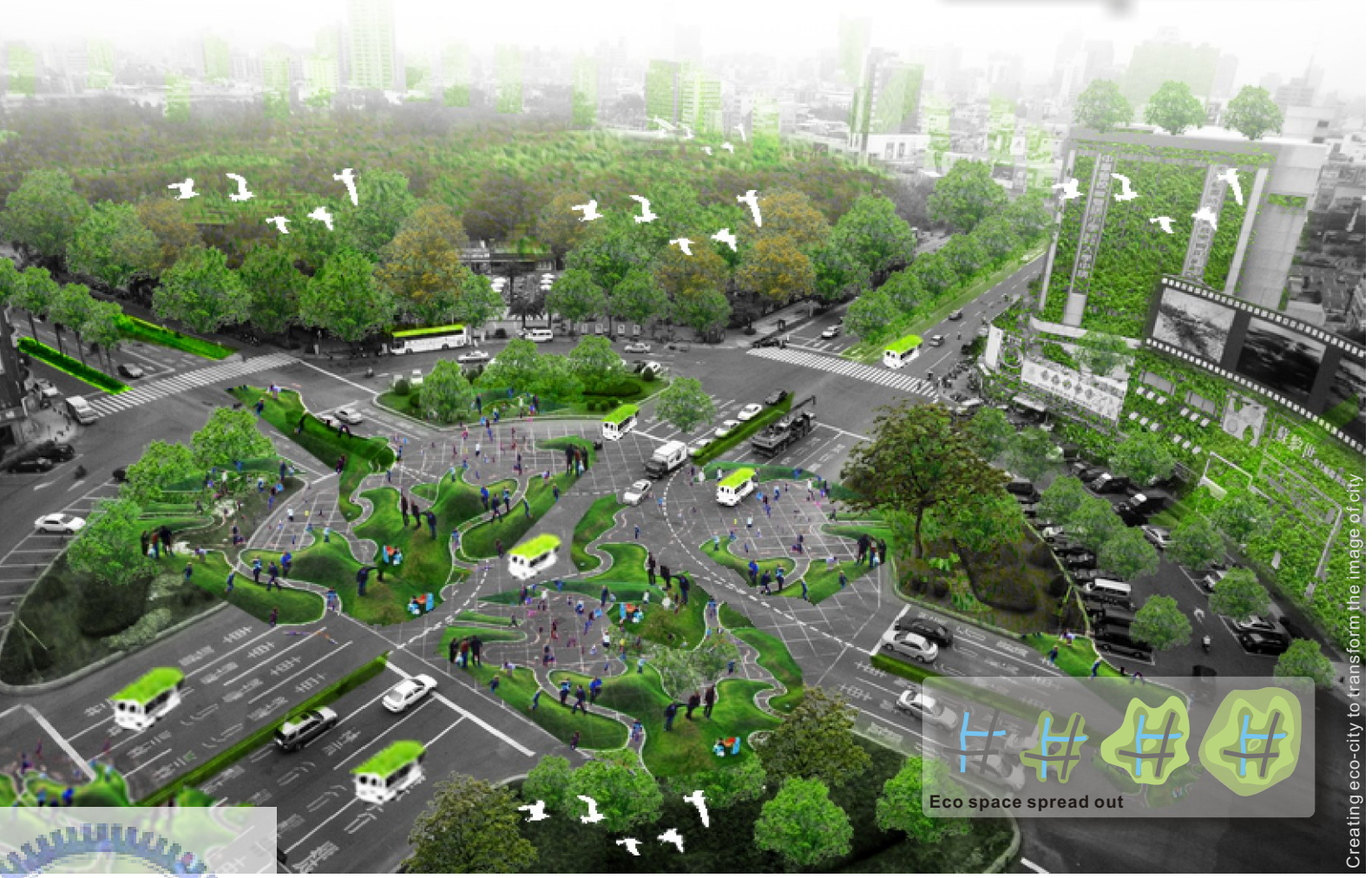


City eco-gene transportation dynamical gene spread out

-  Bus line
-  Gardenbus
-  Bus stop

Surface of building

It's a food exchange interface and temporary stay place



Creating eco-city to transform the image of city

