

Figure 1. β -galactosidase activity by filter assay of Ym990348 (up), Ym990361 (middle), and SC5314 (down) *CDR1* promoter-*lacZ* strains. 348*CDR1p*, *S. cerevisiae* cells containing the Ym990348 *CDR1* promoter-*lacZ* fusion; 361*CDR1p*, *S. cerevisiae* cells containing the Ym990361 *CDR1* promoter-*lacZ* fusion; 5314*CDR1p*, *S. cerevisiae* cells containing the SC5314 *CDR1p-lacZ* fusion.

M V C13 C19 C8.1 C26 C18 C27 C74 C82 C92 C96

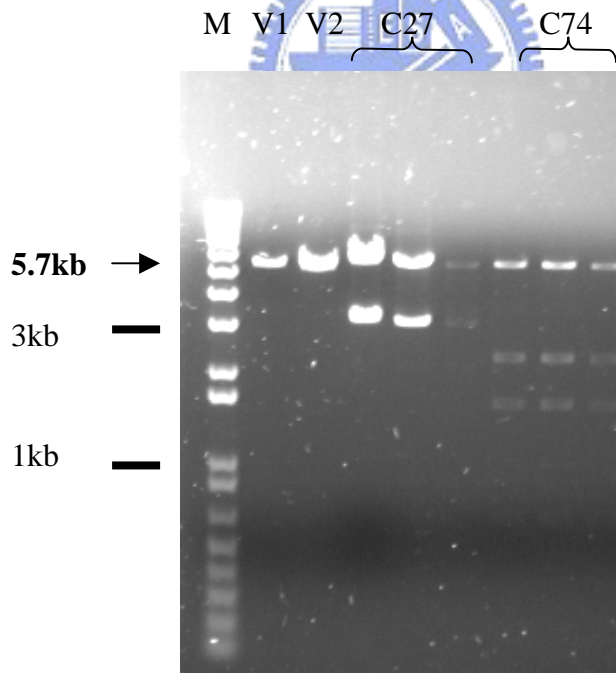
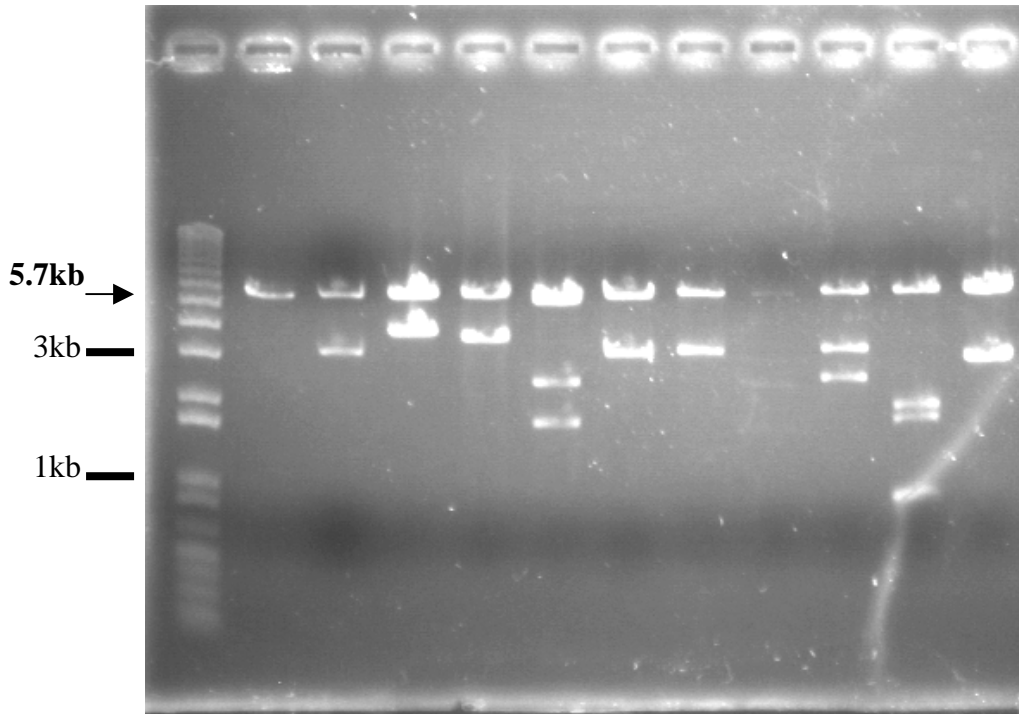


Figure 2. Restriction mapping of ten candidate plasmids and pRS202(vector alone). Plasmid DNAs were digested by *Kpn*I and *Bam*HI. The size of the vector is 5.7 kb. C followed by number indicates candidate plasmid. C13, C19, C8.1, C26, C18, C27, C82, C92, C96, and C74 have insert fragments among the 19 candidate plasmids. M, 1kb plus DNA ladder; V1, vector pRS202; V2, vector pRS426.

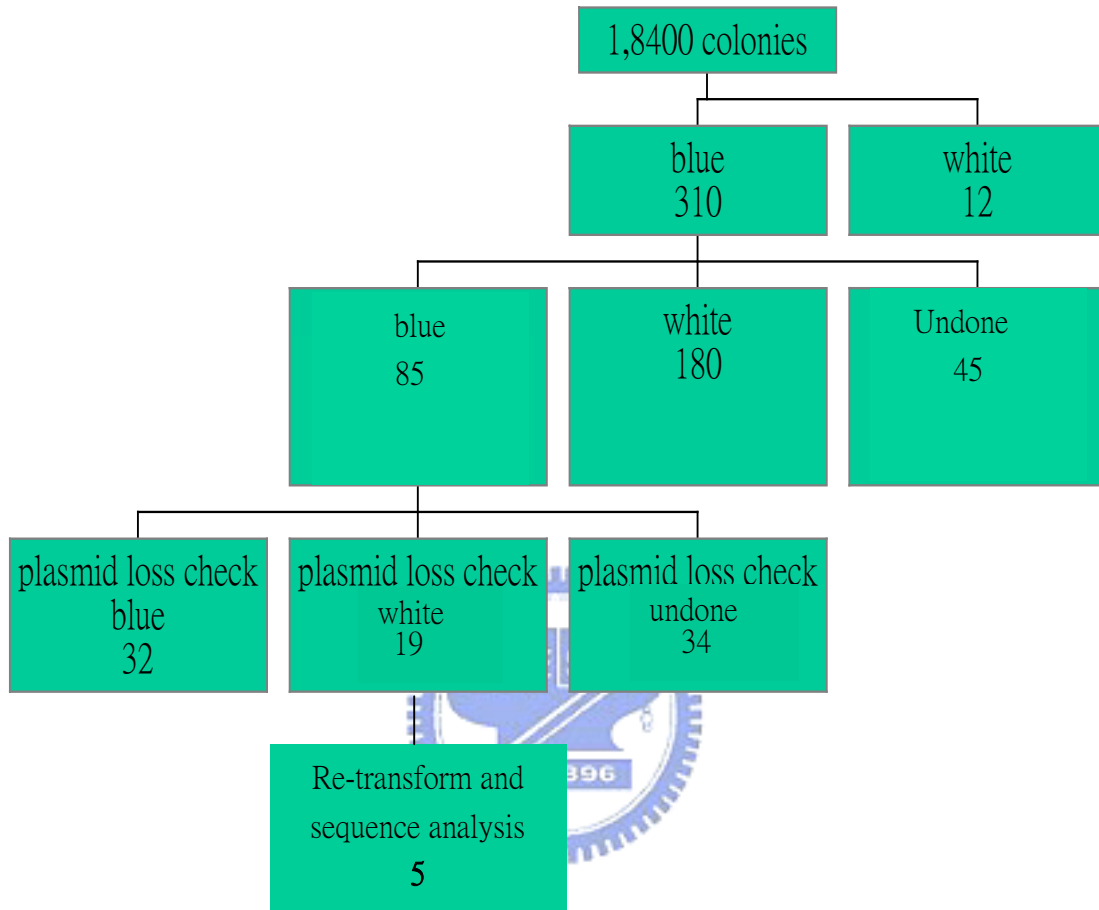


Figure 3. The flow chart of library screening. There were five candidates chosen for further analysis.