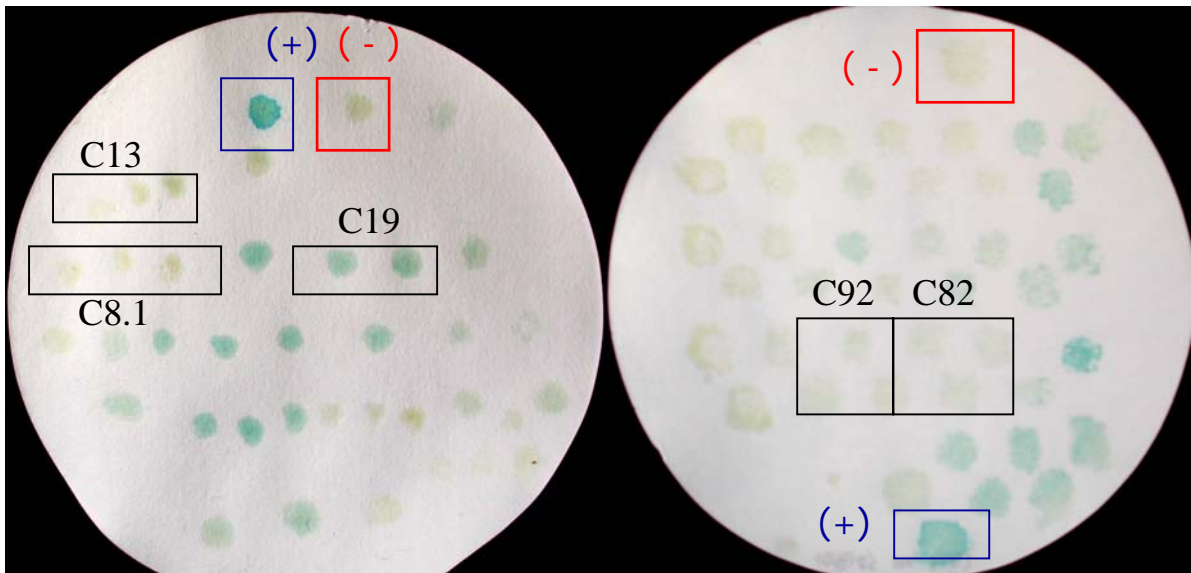


A. Transformed strains



B. Plasmid loss strains

Figure 4. β -galactosidase activity of transformed (up) and plasmid loss (down) candidate strains by filter assay. C8.1, C13, C19, C82, and C92, *S. cerevisiae* cells containing candidate plasmids are as indicated.

- A. (+), Positive control, cells containing *REP2* insert plasmid (pRS426) in 2B/348*CDR1p-lacZ*
 (-), Negative control, cells containing vector plasmid alone (pRS426) in 2B/348*CDR1p-lacZ*
- B. (+), Positive control, 2B/5314*CDR1p-lacZ*
 (-), Negative control, 2B/348*CDR1p-lacZ*