

Figure 5. β -galactosidase activity of transformed (upper panel) and re-transformed (lower three colonies) strains by filter assay. C8.1, C13, C19, C82, and C92, *S. cerevisiae* cells containing candidate plasmids are as indicated. The strains in the same black block contain the same plasmid.

- (+), Positive control, cells containing *REP2* insert plasmid (pRS426-based) in 2B/348*CDR1p-lacZ*
- (-), Negative control, cells containing vector plasmid alone (pRS426) in 2B/348*CDR1p-lacZ*

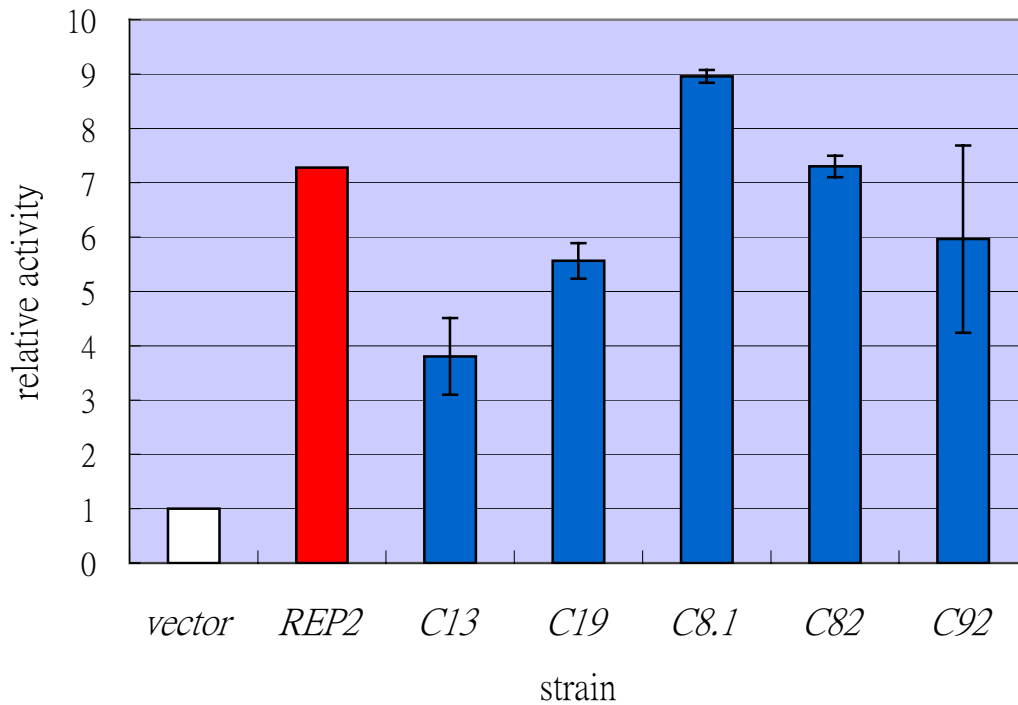


Figure 6. β -galactosidase activity of *S. cerevisiae* cells containing 5314CDR1p-*lacZ* and candidate plasmids by liquid assay. *S. cerevisiae* cells containing 5314CDR1p-*lacZ* and candidate plasmids are as indicated. Vector, the cells containing plasmid without any insert; *REP2*, the cells containing plasmid with *REP2* insert. C13, C19, C8.1, C82, and C92, cells containing one of the 5 candidate plasmids as indicated.