



portfolio

content

second year

Path and Continuity\_chaoma transfer post P14

Suburb-Ruralism\_connecting interface P20

..Chang Chung-yi.....



DESIGN STUDIOS second year

chaoma transfer post



An extended experience

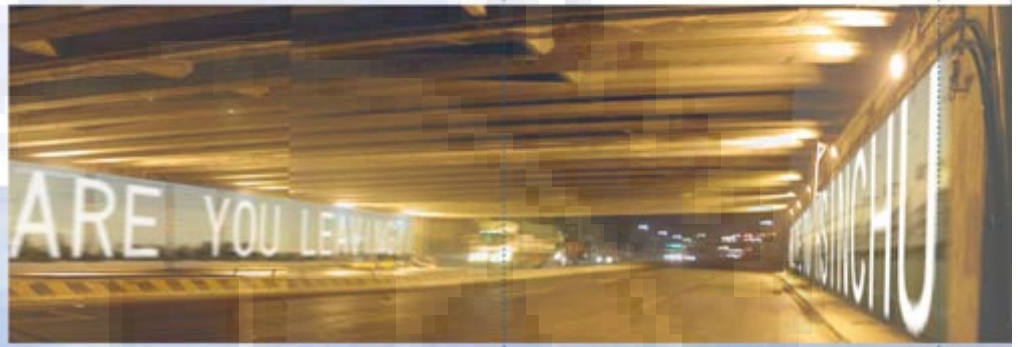
The inspiration of this project is from the experience of there and back between HSINCHU and TAINAN in the bus.

While I taking the bus for a trip , I observed a lot of phenomenon and behavior of highway traveling . It make me start to think about several questions . What is traveling ?How people moving in the city? And what happen when people moving from city to city

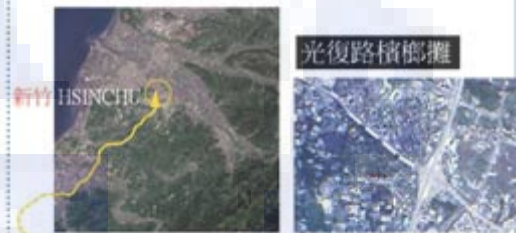


path and continuity\_

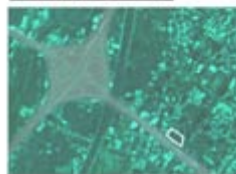
The highway landscape



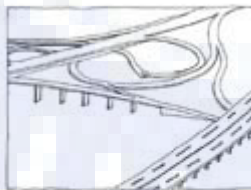
advise professor : Lin Jou-Mi



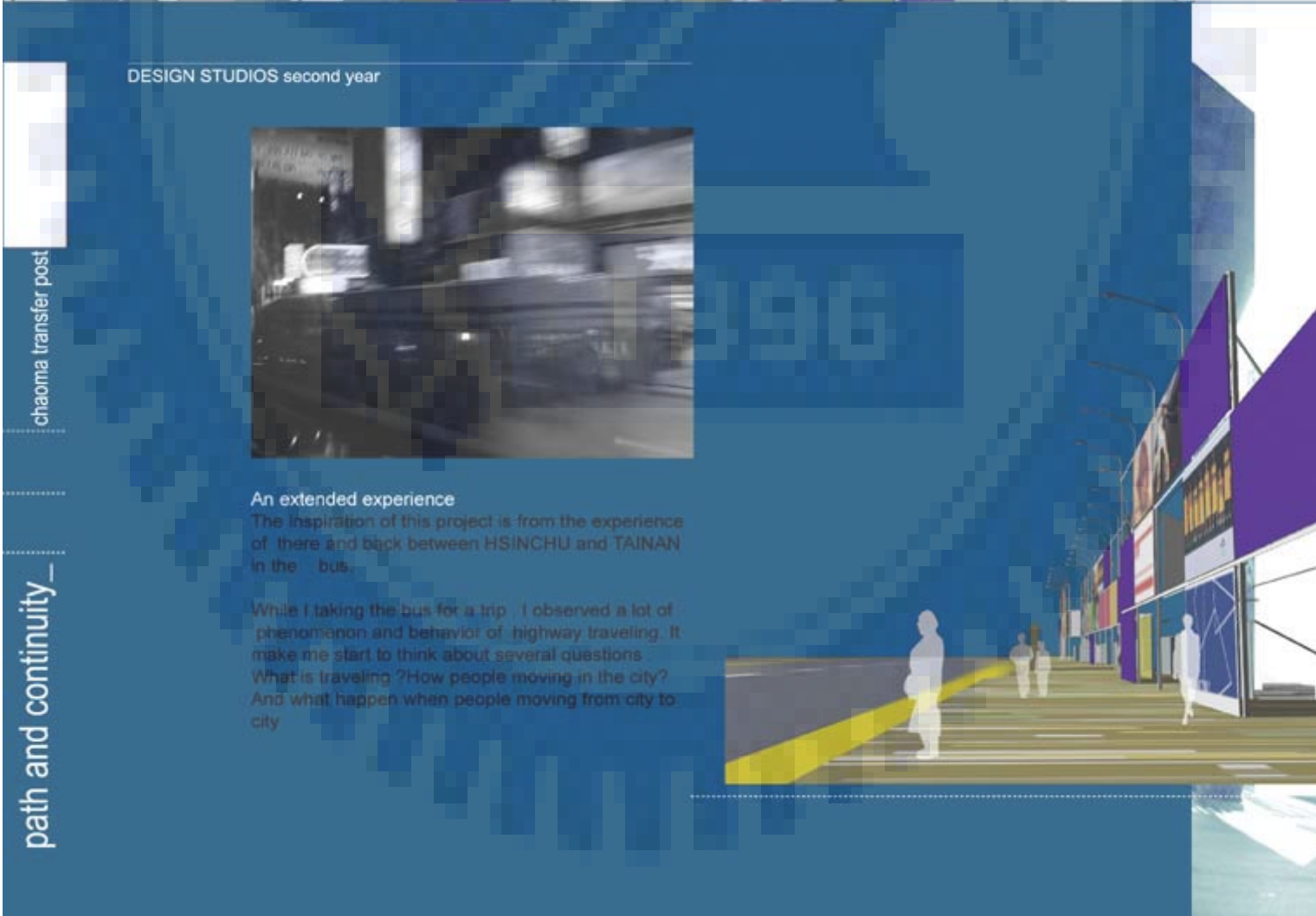
統聯朝馬車站



a new purpose for sound insulated wall







DESIGN STUDIOS second year



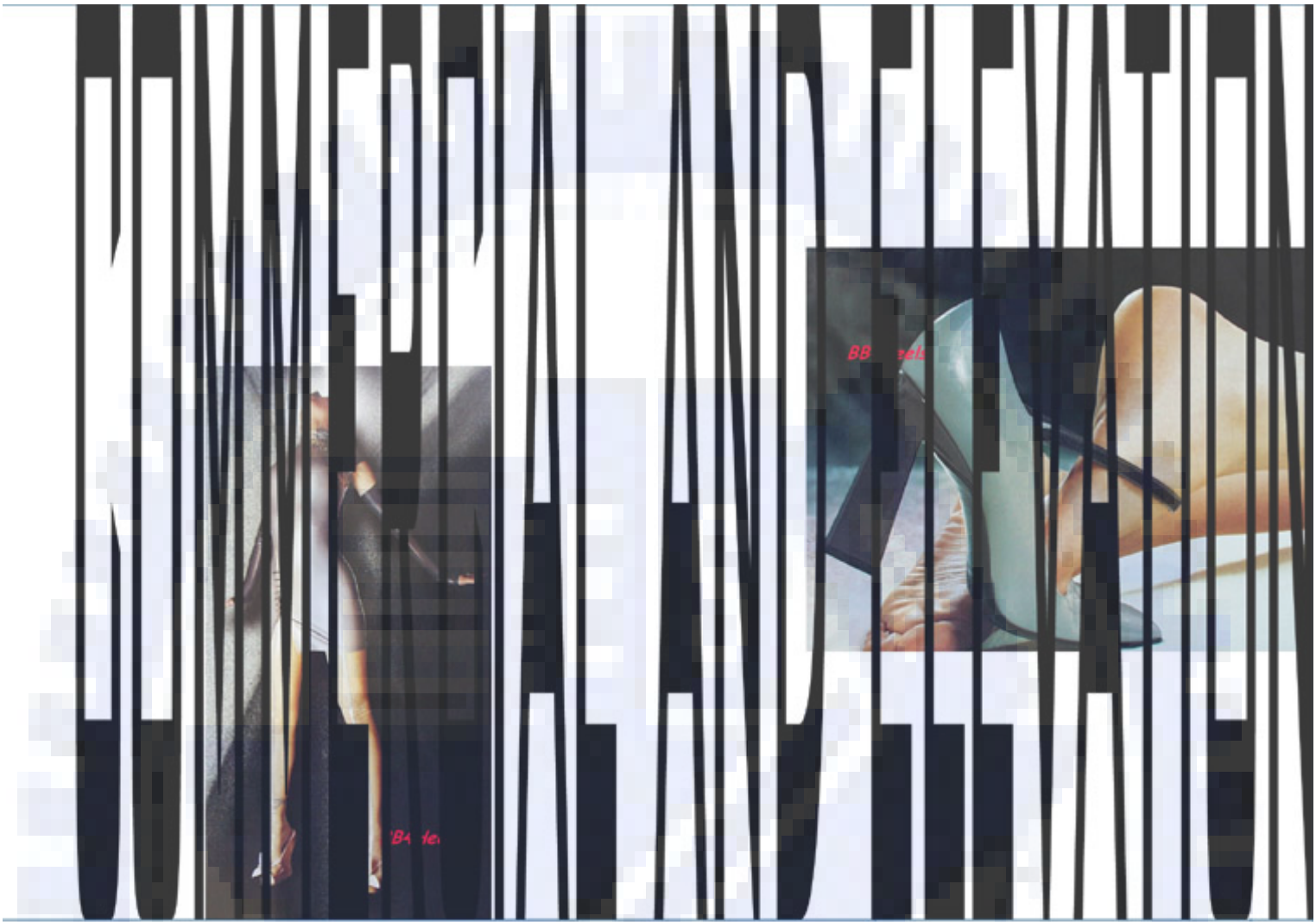
An extended experience

The inspiration of this project is from the experience of there and back between HSINCHU and TAINAN in the bus.

While I taking the bus for a trip . I observed a lot of phenomenon and behavior of highway traveling . It make me start to think about several questions . What is traveling ?How people moving in the city? And what happen when people moving from city to city

chaoma transfer post

path and continuity \_

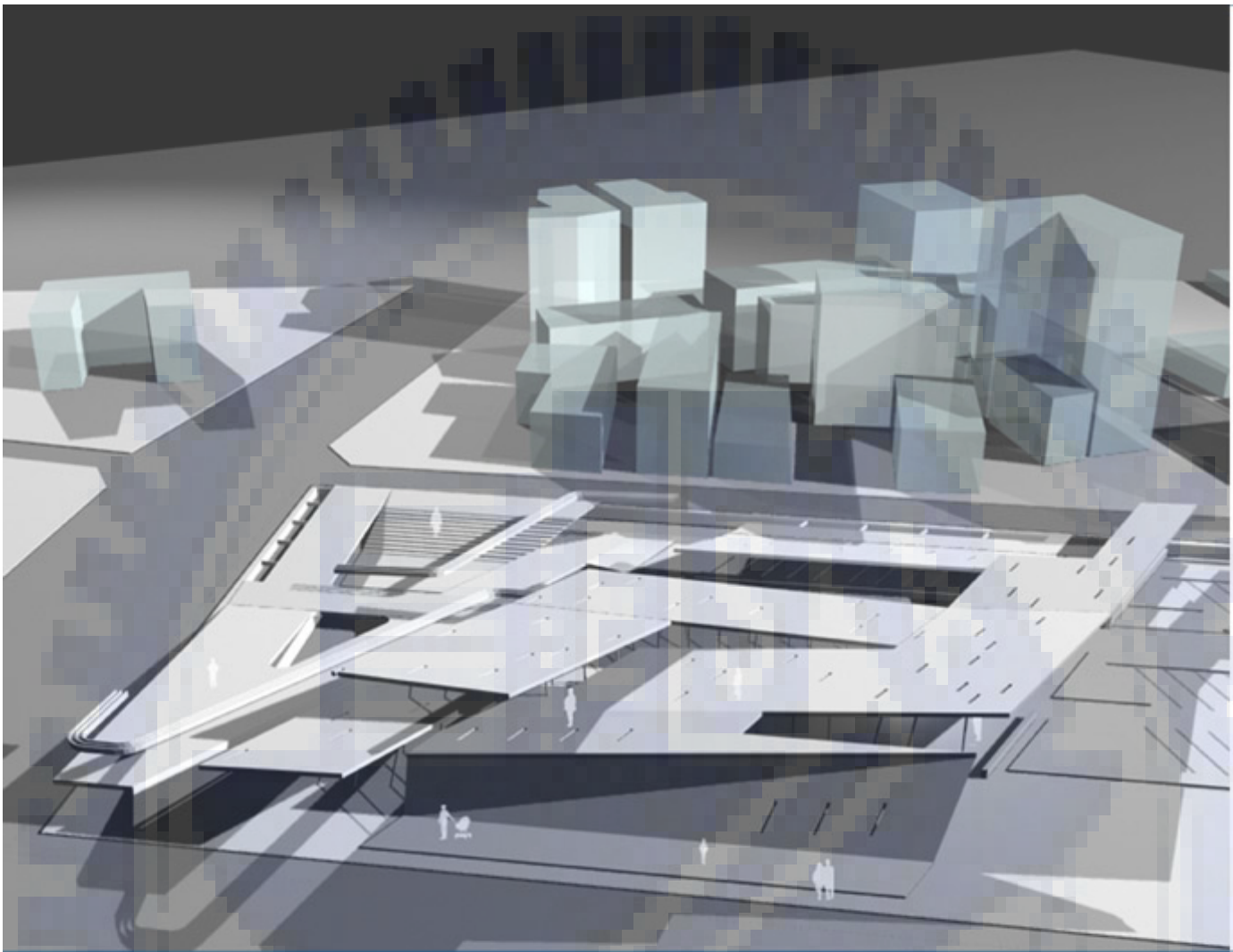


advise professor : Lin Jou-Mi



the bin-lun store and the signboard in the 光復路 quite a spectacle, specially in the night,during this highway experience,the street commerical signboards had become the new architecture facades.



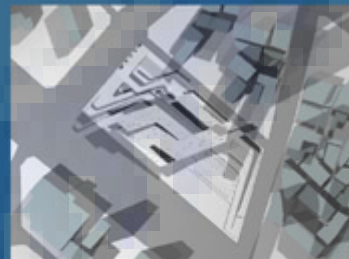


DESIGN STUDIOS second year



**An extended experience**  
 The inspiration of this project is from the experience of there and back between HSINCHU and TAINAN in the bus.

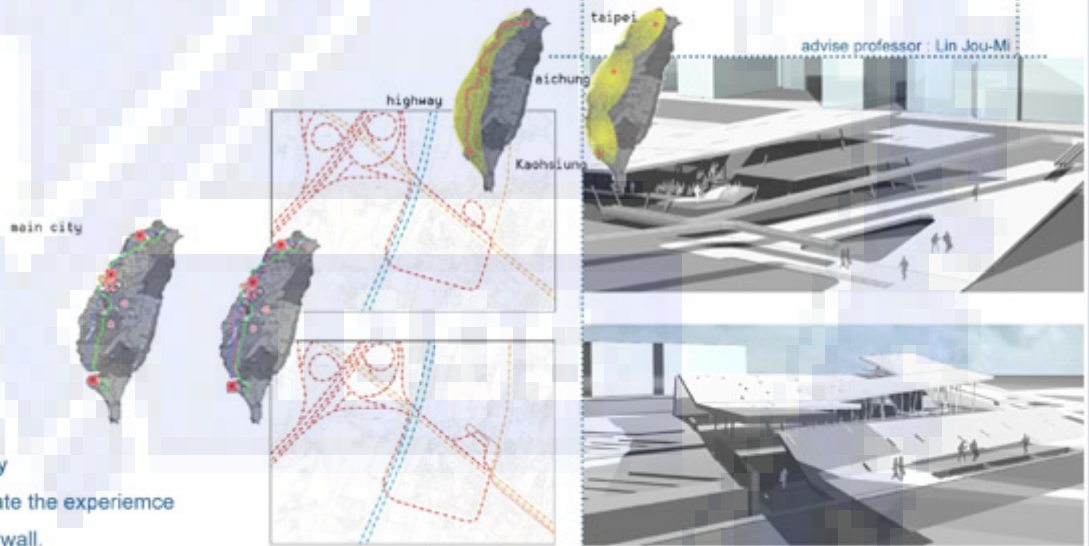
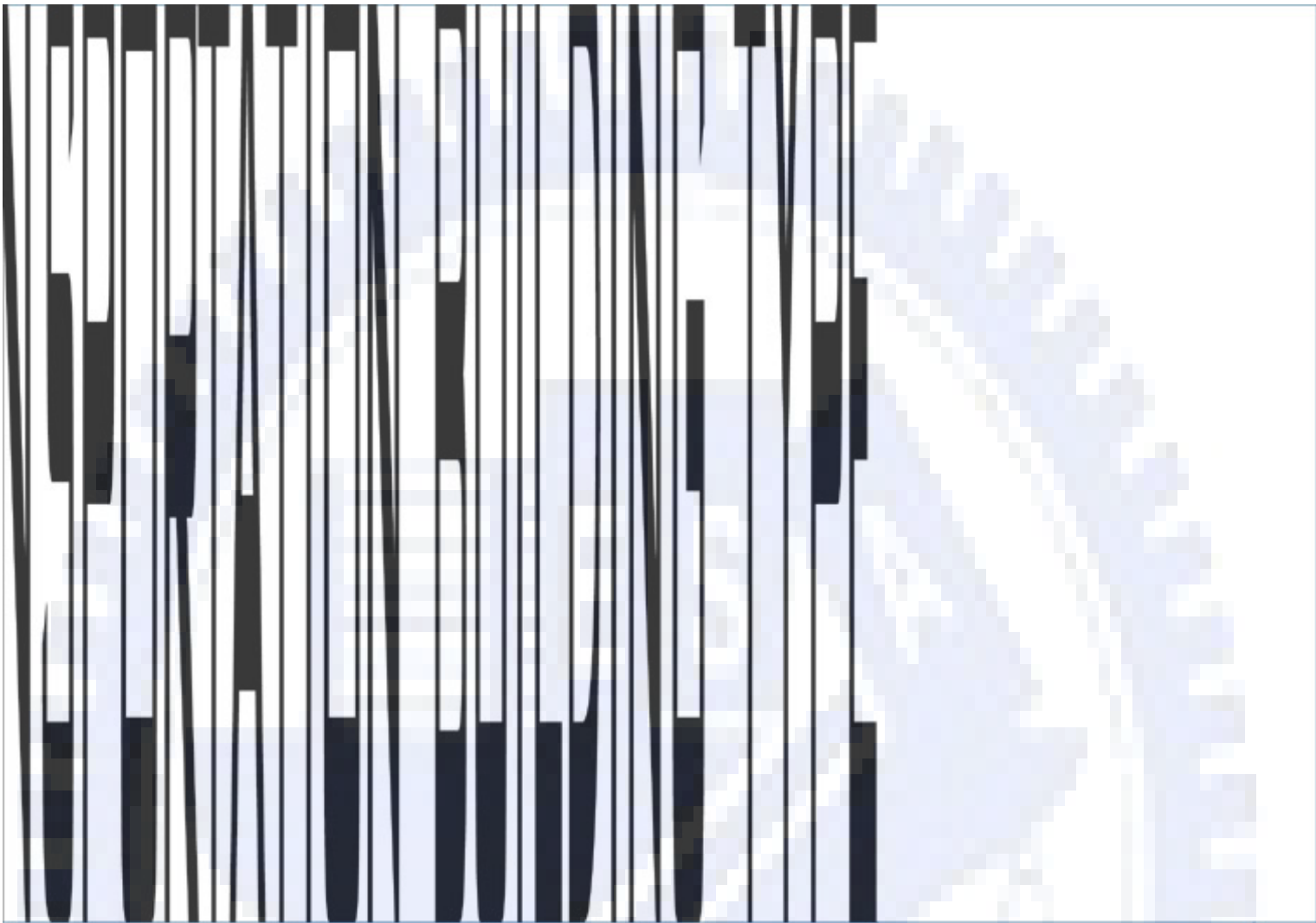
While I taking the bus for a trip , I observed a lot of phenomenon and behavior of highway traveling . It make me start to think about several questions . What is traveling ?How people moving in the city? And what happen when people moving from city to city



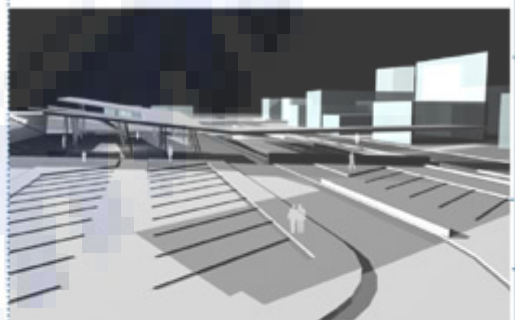
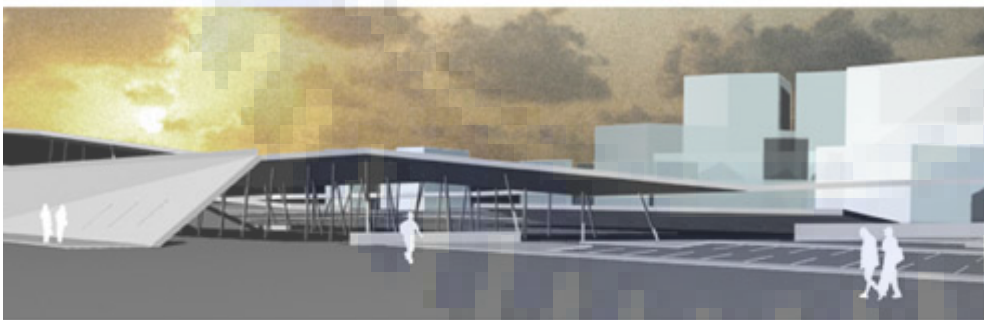
chaoma transfer post

path and continuity\_





the design of chaoma transfer post is a study of transportation type and attempt to re-create the experience under a bridge, when linear light drop on the wall.



DESIGN STUDIOS second year



connecting\_interface

Suburb\_Ruralism

the interface of city and rural is often the land of suburbs, and the connection between two is road system. as people driving themat home, they also taking the character of city life home.

rura life lack of convenience and information, city life pack up with people and stress. why can there be a life which is easy and relax, yet still diverse and sophisticate???

why can we have it all???

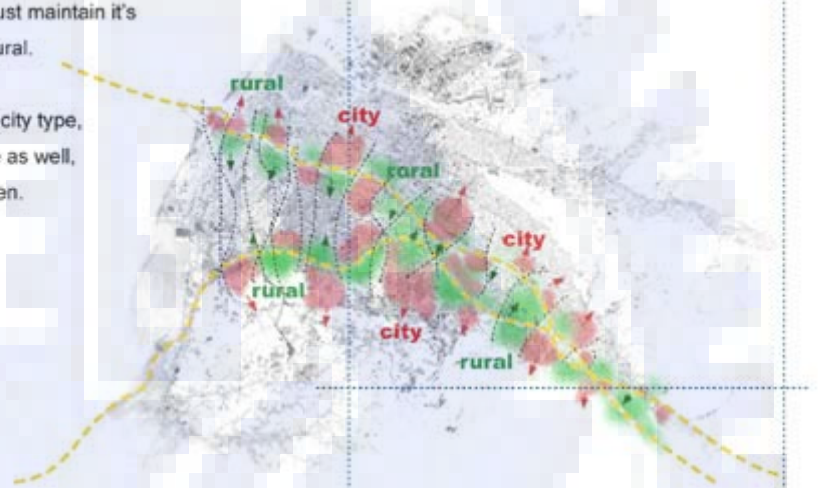
this particular design is to discuss the possibility of the life between.



## The interface of urban and rural

the boundary of urban and rural will change though the expansion or the shrinking of city as time go by ,so it must maintain it's neutral and adaptation between urban and rural.

also,as the inreface connecting two different city type, it is exchanging the behavior of two life style as well, it is not belong to urban or rural,but in between.



advise professor : Chiu W. Jay



rubbing landscape:

### 交通 ---

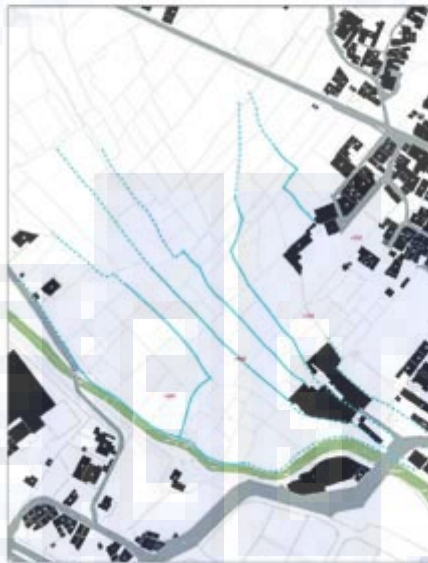
基地內的主要道路為水滸街, 干甲路, 大京路及內圍交線鐵路等 6 米以內的聯小道路, 其餘太多為田埂小路, 交通不易大型車輛通過和不與都市主要道路連結, 但鄰近市中心和各主要道路, 對都市人來說十分快可以到達,

### 周圍重要建築物 ---

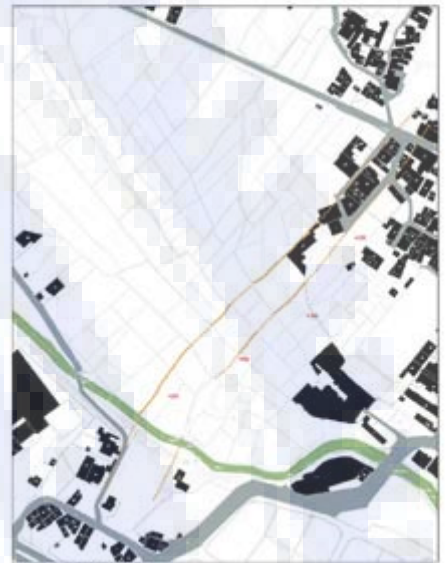
大多數在都市邊緣的建築物為工廠, 倉庫, 及量販店, 其他位於基地內的建築多為 4-5 層的民居,

### 綠文, 水文 ---

基地上方有頭前溪流經, 基地內也有九甲埔圳等支流經過, 水文豐富可做為農業灌溉, 而目前農地多為荒廢或自家食用的狀態,



water



road system

DESIGN STUDIOS second year



connecting\_interface

Suburb\_Ruralism

the interface of city and rural is often the land of suburbs, and the connection between two is road system as people driving themat home,they also taking the character of city life home.

rura life lack of convenience and information,city life pack up with people and stress why can there be a life which is easy and relax,yet still diverse and sophisticate???

why can we have it all???

this particular design is to discuss the possibility of the life between.

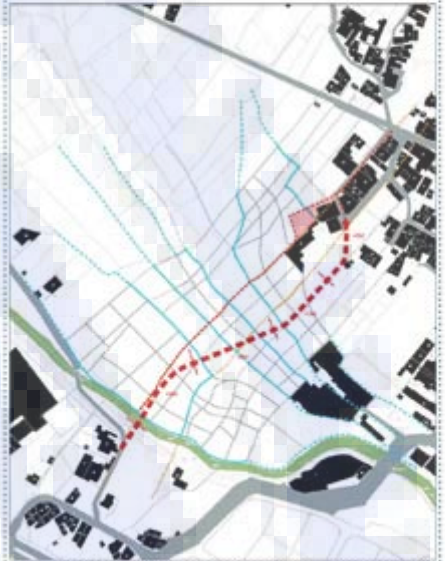




agriculture system



the bridge system



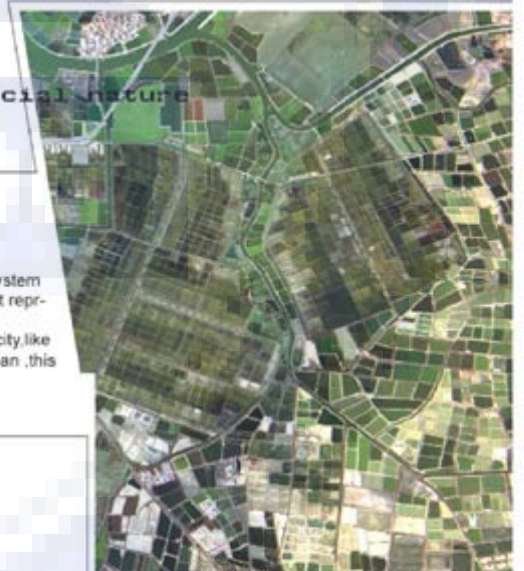
the land grid

advise professor : Chiu W. Jay

## agriculture and artificial nature

### THE VALUE

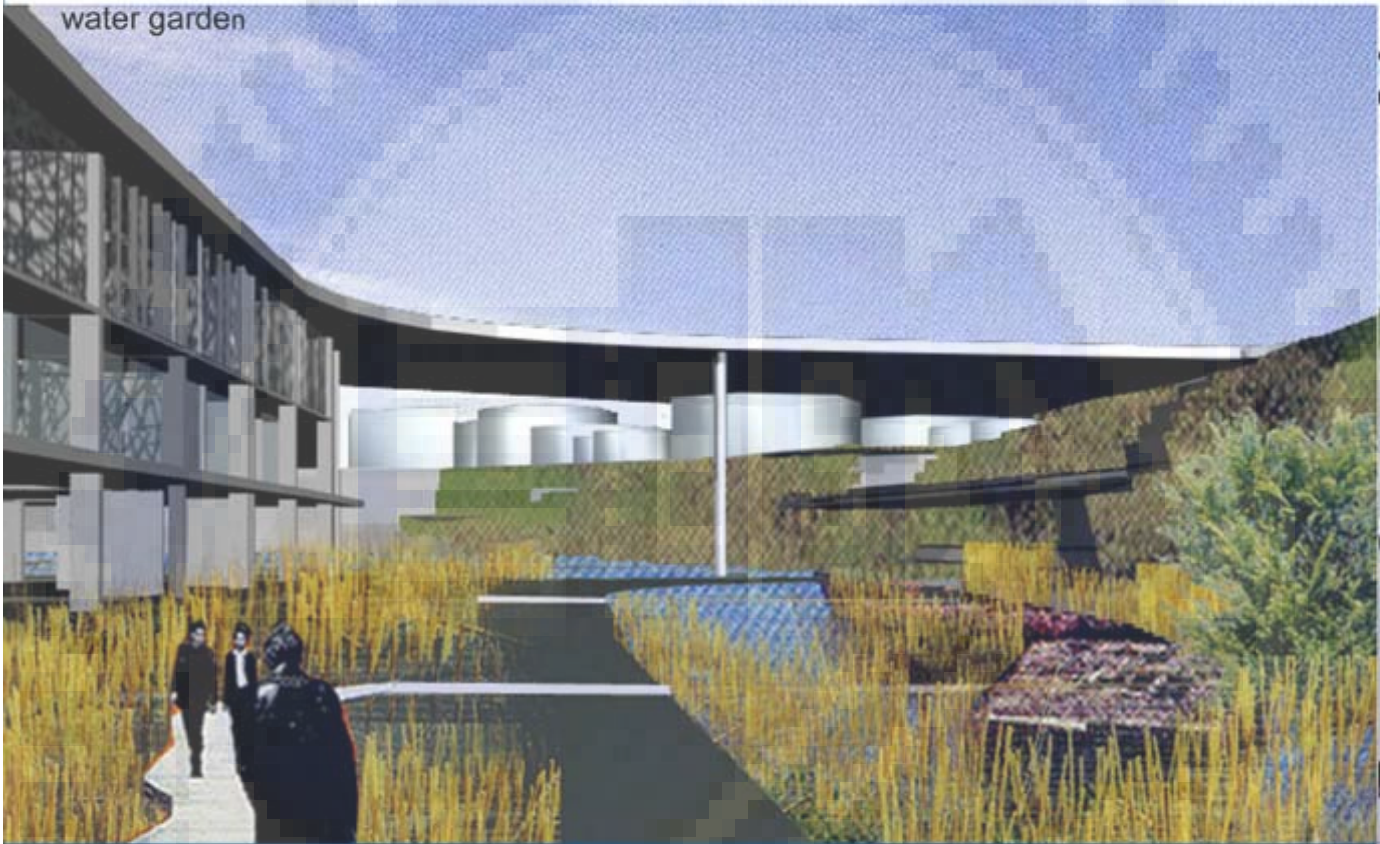
In order to grow our principal food—rice, the Chinese agriculture society develops a system to divide the farm into small squares, and now the paddy rice farm has become the most representative image of our landscape. Today, as the urbanization spread, this cultivated nature is replaced by artificial nature of city, like park, shade tree or home garden, not being able to compete with the productivity of urban, this rural landscape is now disappearing.



by proposing a new program for those paddy rice farms near city, I hope to connect and share the advantage between two, yet still preserve each character and identity of urban and rural.



water garden



DESIGN STUDIOS second year



the site provide a 10 meter high declivity for the bridge to go through without touching the ground,so the system of driving and walking has been separated above the bridge is the world of car under the bridge is the world of rural life and the connection between them is the court yard of each house



the interface of city and rural is often the land of suburbs and the connection between two is road system,as people driving themself home they also taking the character of city life home.  
 rura life lack of convenience and information,city life pack up with people and stress why can there be a life which is easy and relax,yet still diverse and sophisticate???  
 why can we have it all???  
 this particular design is to discuss the possibility of the life between.



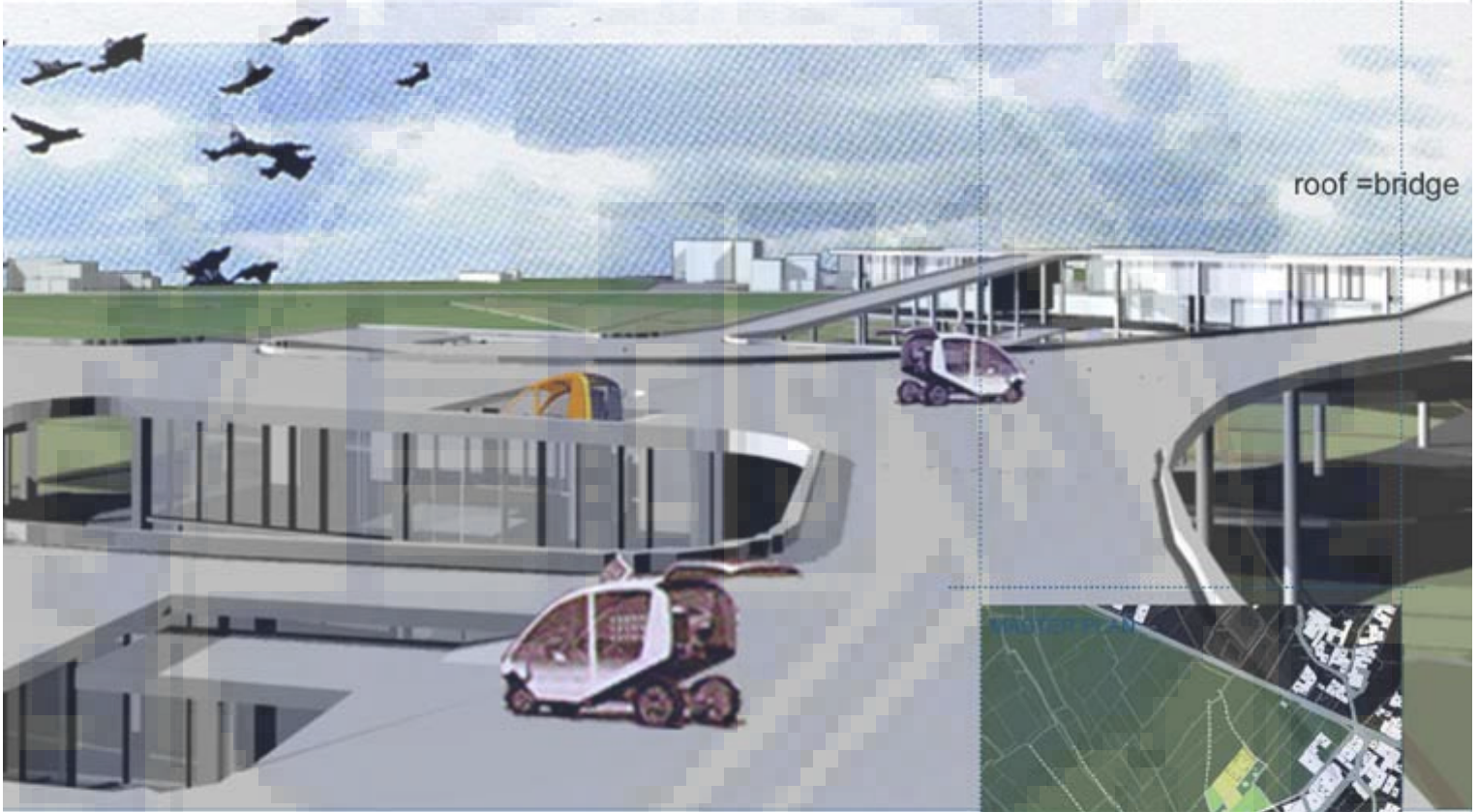
connecting\_interface

Suburb\_Ruralism



advise professor Chiu W. Jay

roof = bridge



Ground floor open space



Park way of sport line



Playing on the farm

