

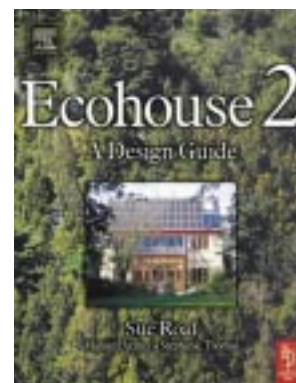
Recycle

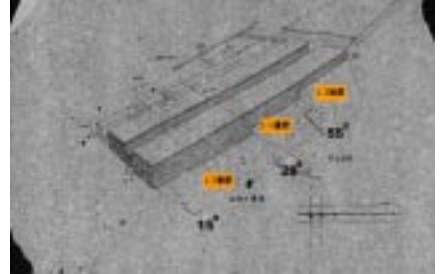
flow-through

Water Cycle of The TeaHouse

June 1,2003 The Competiti on for an Ecohouse.

Design by:Chia-Chun Kuo+Wen-Way Wan





茶字 - 中國這個「茶」字，**草**字頭，**木**字身，中間夾個**人**字。

“Tea” - the character “Tea” in Chinese have several parts, including the outset of “leaves”, the body of “wood” and a character “human” in the middle.

草_茶磚

Grass-brick tea

We always manure three times a year. Half of manuring in spring is termed as “spring manure”. A quarter of it is termed “summer Manure” and the other is termed as “fall manure”. The manuring channel is 50x30x40cm; The suitable inclination is 15°; Therefore, we separate the building into three units that comprise one that is half of the whole building and the other two which are half of the rest. “Ramp for Disabilities is 15°, sectional detail, and the manuring channel are suggested to construct.

全年中茶樹施肥3次，1/2肥料於春茶萌芽之際稱春肥；1/4夏肥；1/4秋肥。施肥溝矩為50x30x40cm；15°坡為宜種茶梯高。係建築物分別以1/2和兩個1/4單元；15°殘障坡道和切線細部和灌溉坡溝組構。

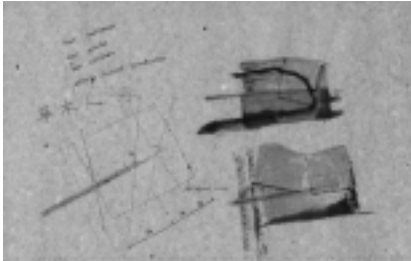
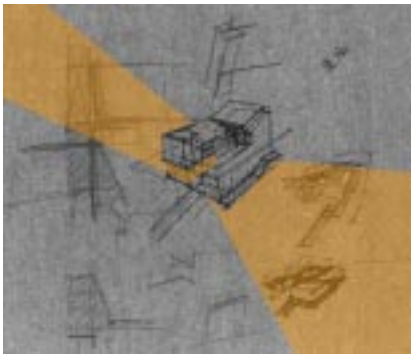


水
草
人
木

人 木 草 水

茶

木是遮蔽
草是大地
人穿過其間



The route on the site: We try to transform the inclination of a terraced field into the teahouse; the loan floating below the unit suggests the implication that humans and nature reconstruct the space cooperatively. In particular, the nature skin brings wind and water in.

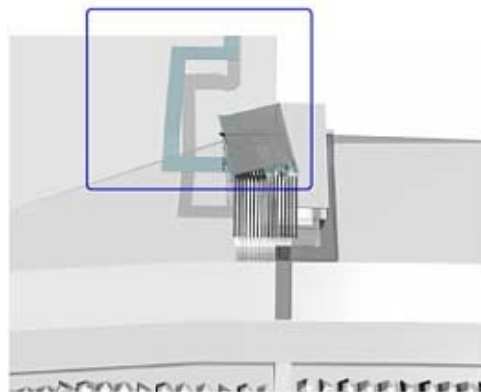
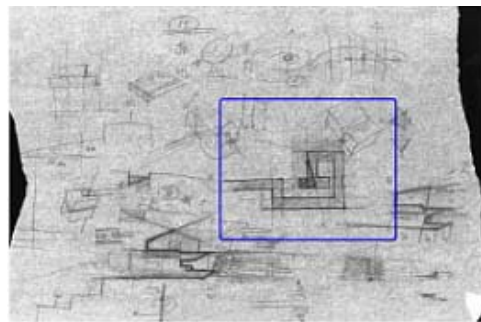
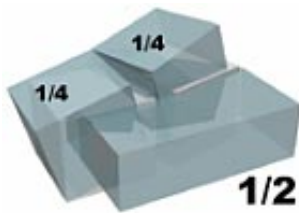
基地動線：將梯田的坡度旋轉入 teahouse 中；浮在單元空間下的草坪暗示人與自然共構的意象，自然皮層覆蓋下引進風和水。

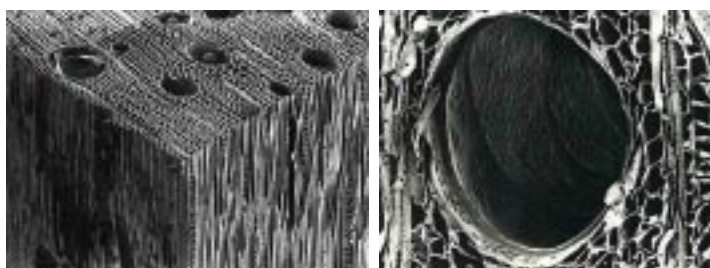
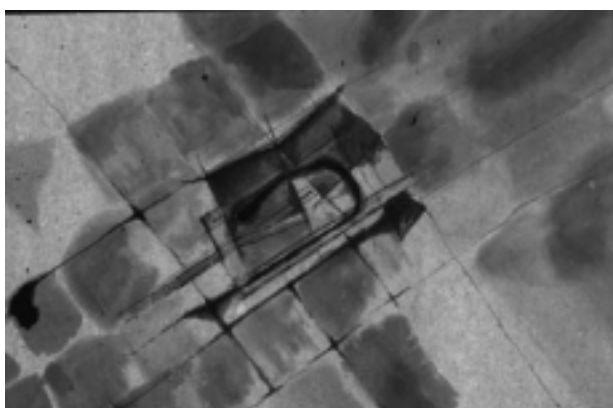
Human-Cement

The layout of the units is arranged according to one's position in a hierarchy comparable to the family tree. We ranked the space in four prospects, exactly "Tea" ; "B" ; "respect" ; "B" ; "clearness" and "desolation".

人 _ 水泥

單元空間配置的低到高係由小孩到祖母的輩分關係順勢而上。以茶道和、敬、清、寂四境成為空間序列。





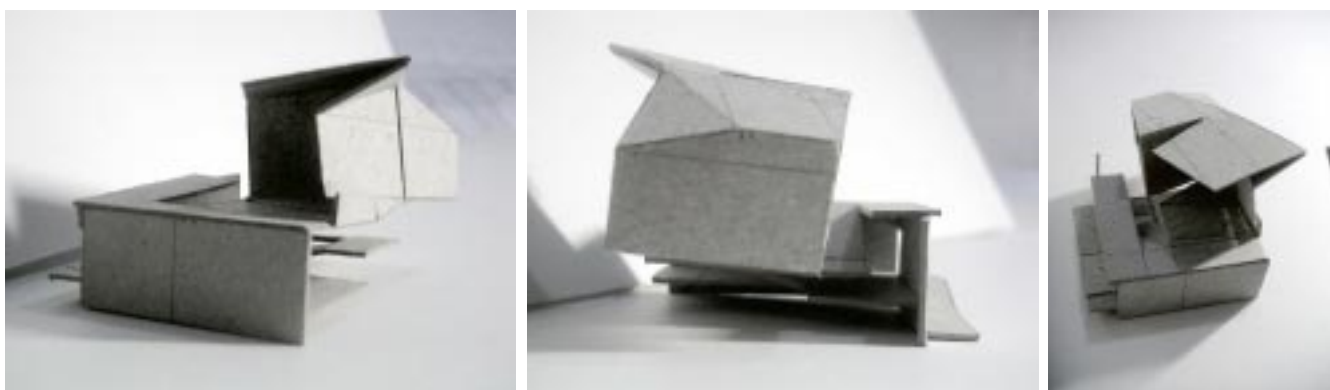
水動線：企圖將人行坡道的進出口和水系統的順逆流貫穿在 teahouse 設計構想。



Pedestrian routes: the visual feedbacks from the movement of people walking through the slope interact with nature. By means of light and wind coming from the gaps in wood-structure, we could experience the water-circulation in it.

人行動線：行進於坡人的視覺經驗將與自然互動 - 光線和風透過茶磚木構造縫細入內，感官體驗水循環系統貫穿其間。



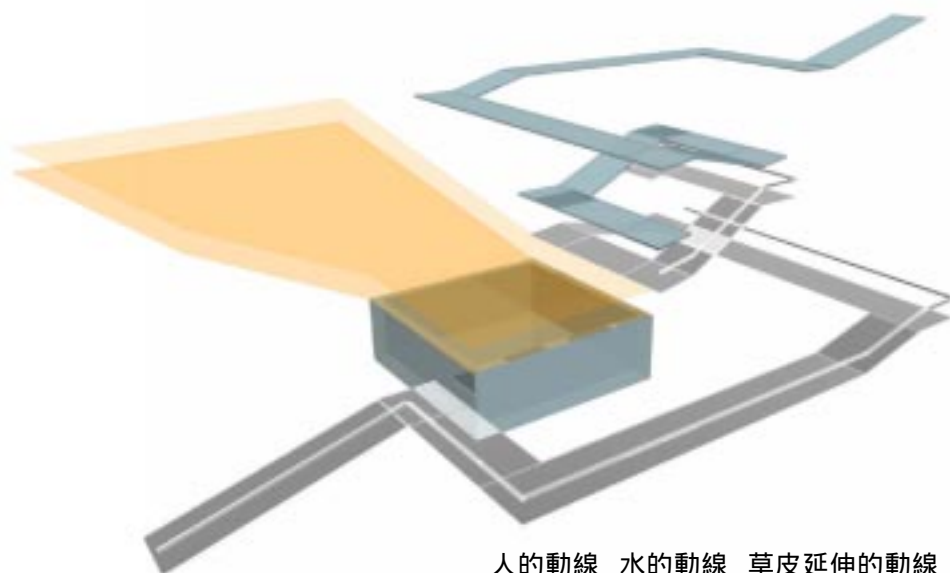


Wood-Wood structure

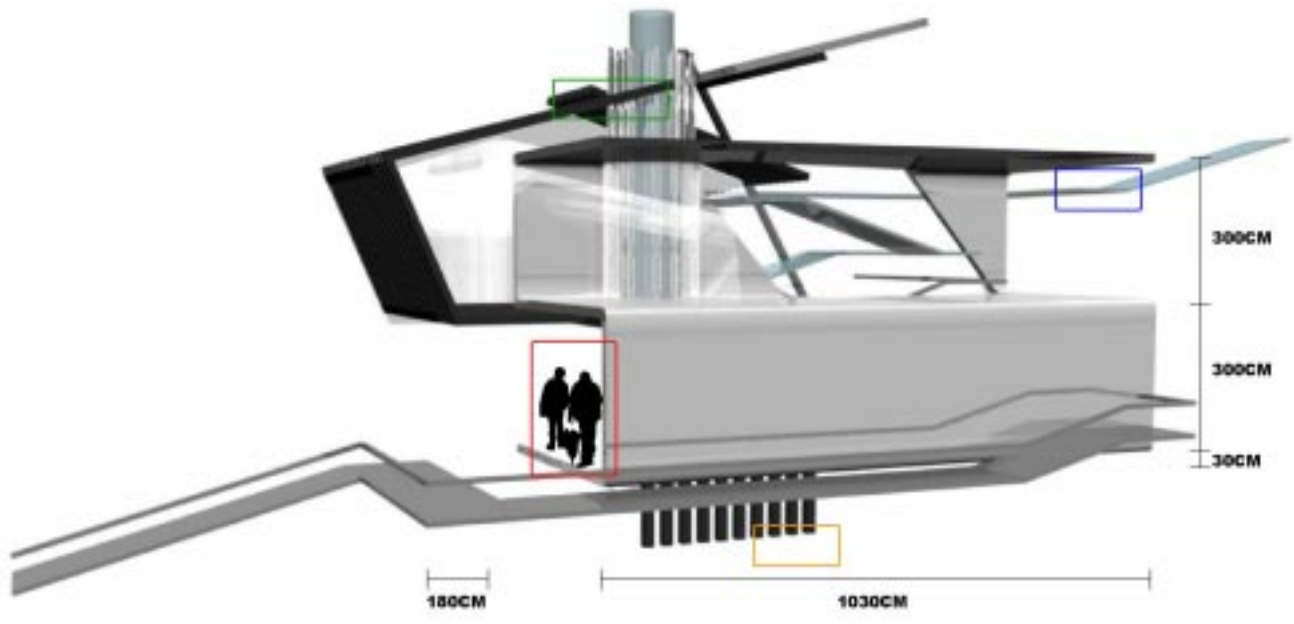
A non-hydrant house; drinking water; Btap-water; Bgroundwater circulate in the tea house by means of the principle of evaporation.

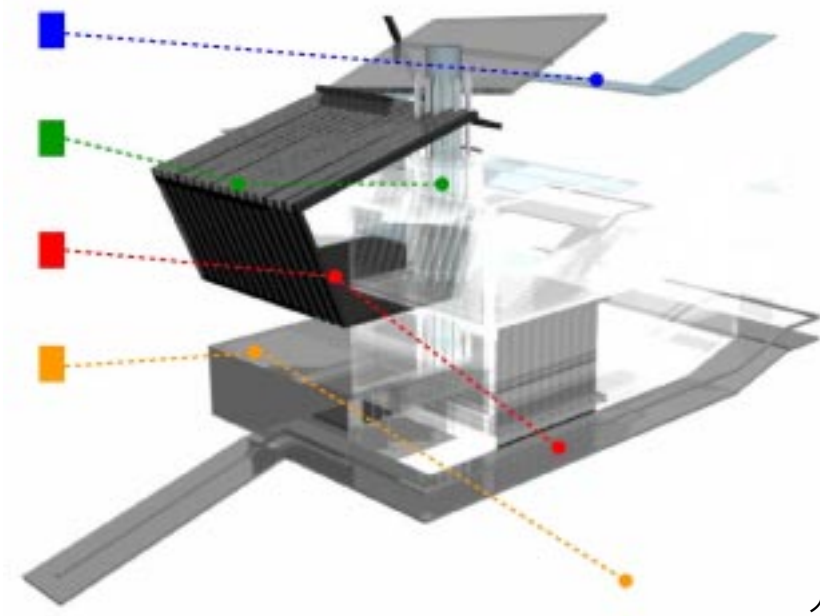
木 _ 木構

無水龍頭之家：飲用水、自來水、地下水三向度水系統，利用植物蒸散作用原理，加溫加壓過程使水循環於 teahouse 中。

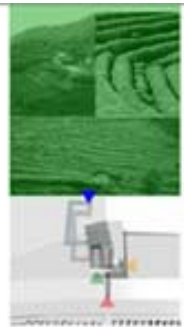
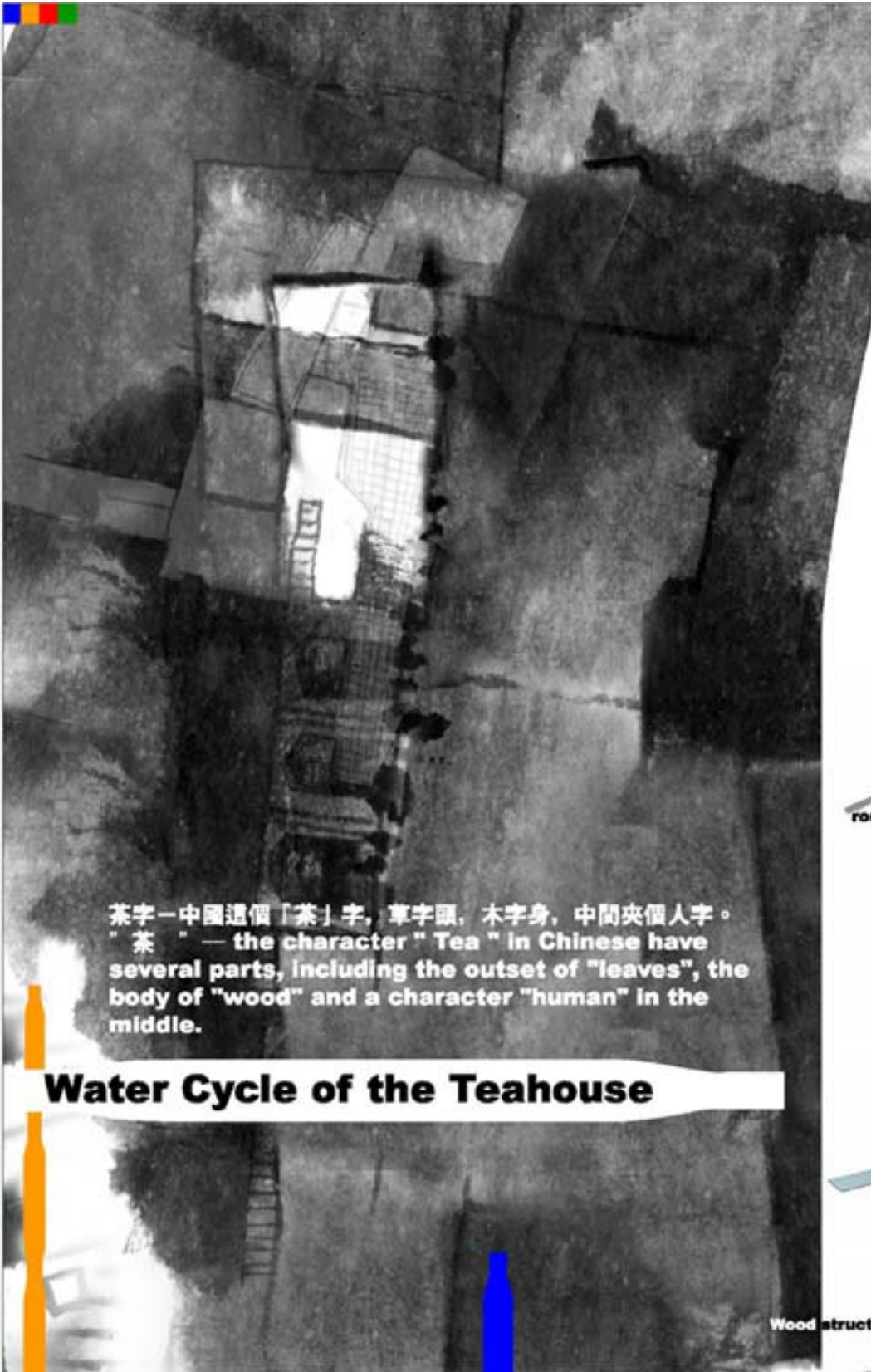


人的動線 水的動線 草皮延伸的動線





人木水草

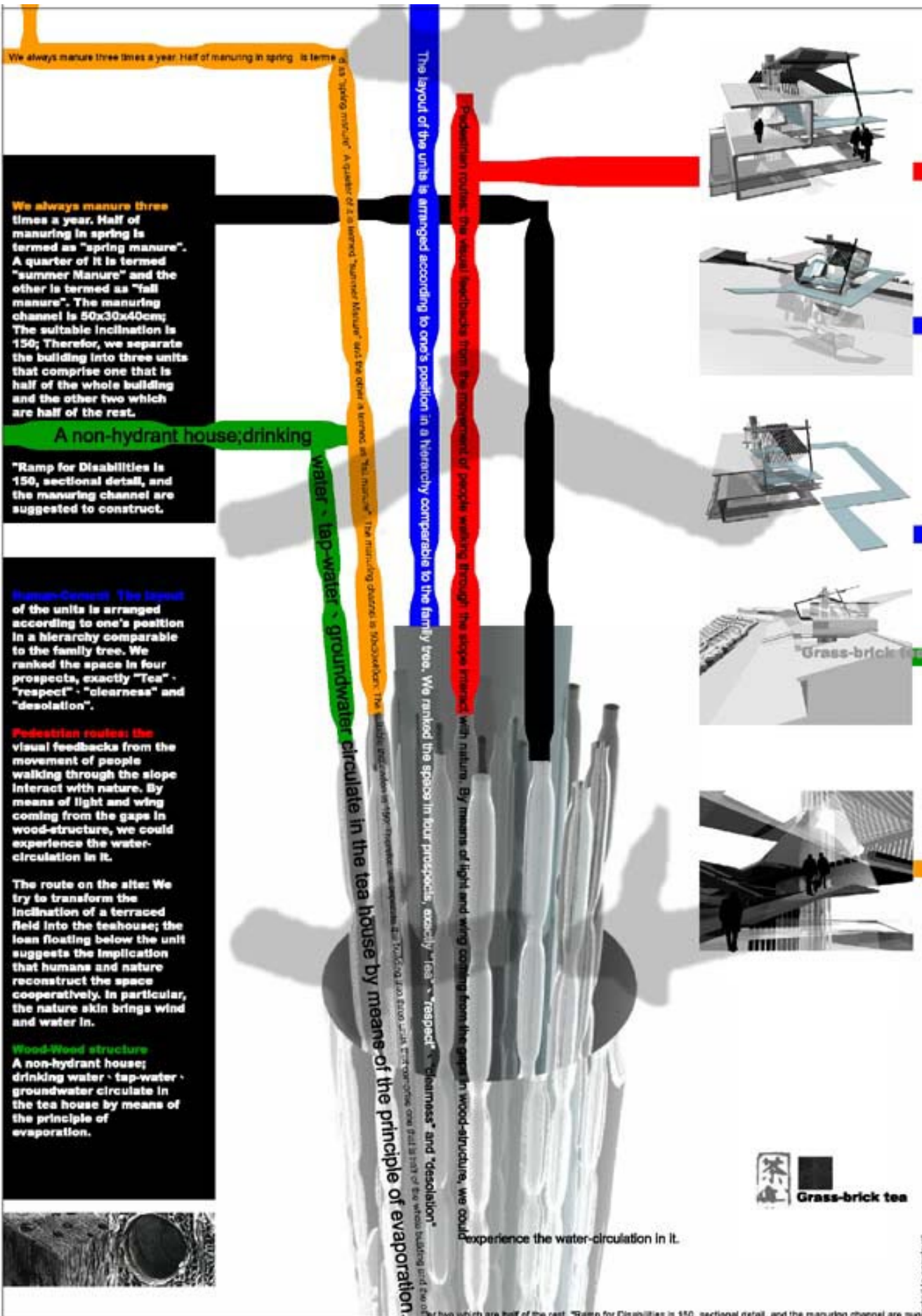


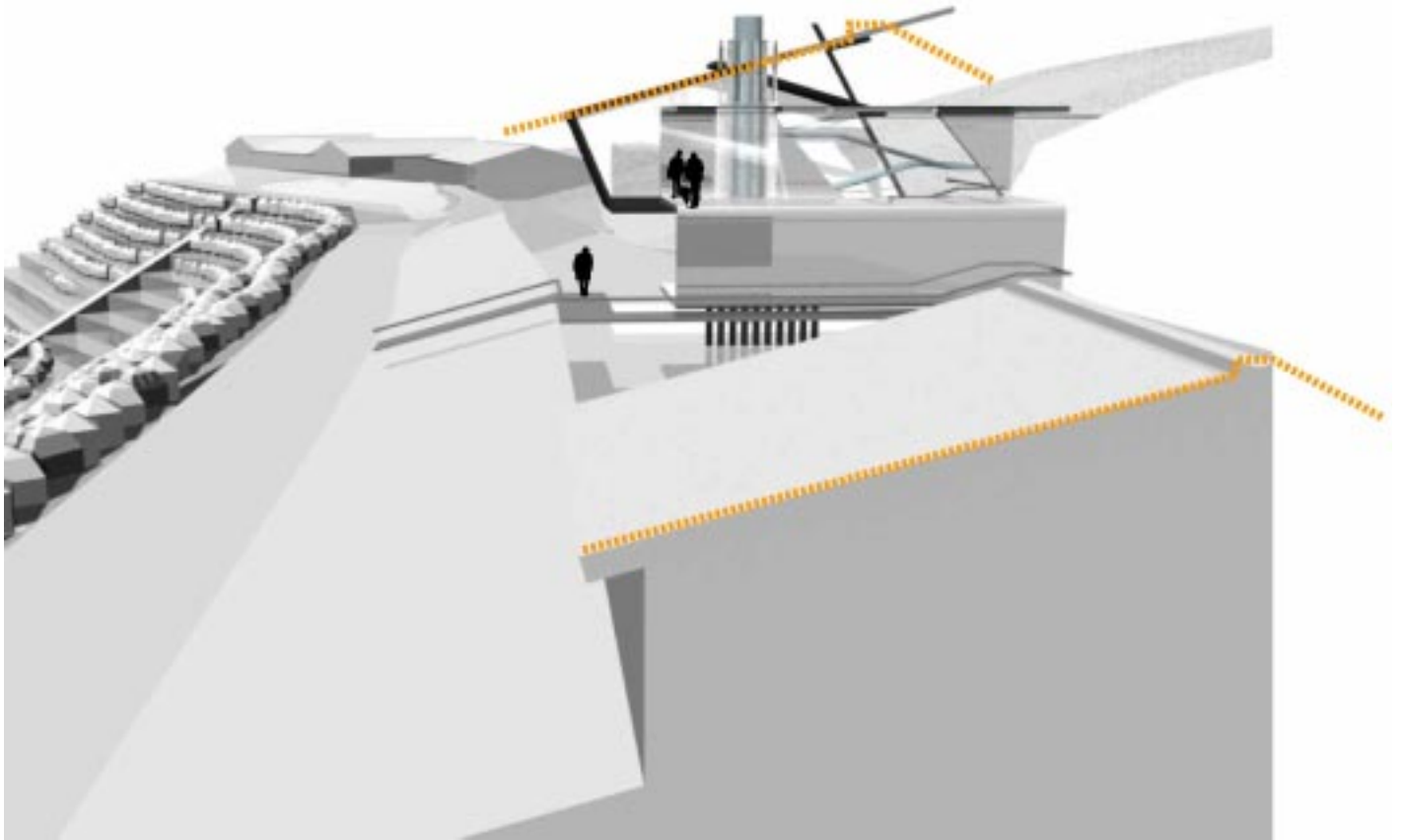
the visual feedback from the movement of people walking through the slope interact with nature.

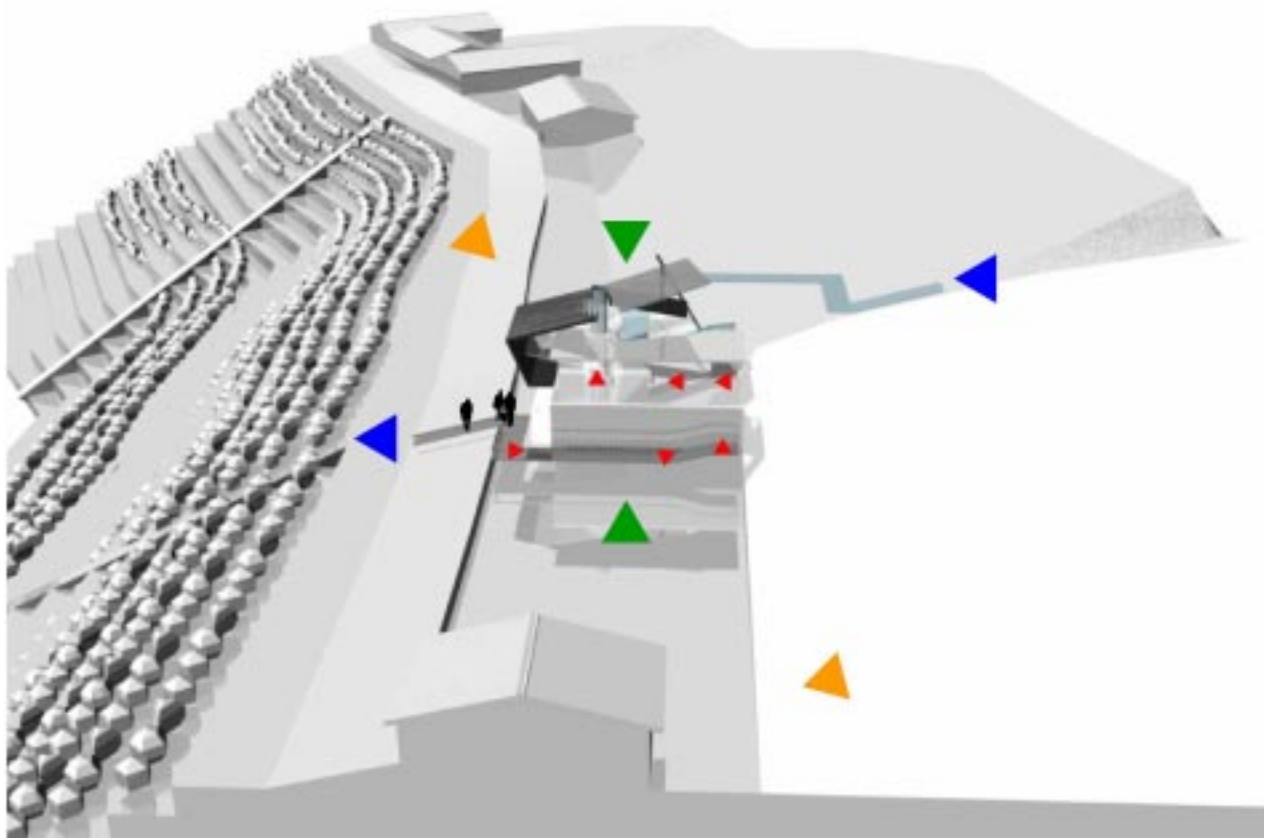
茶字—中國這個「茶」字，草字頭，木字身，中間夾個人字。
“茶” — the character “Tea” in Chinese have several parts, including the outset of “leaves”, the body of “wood” and a character “human” in the middle.

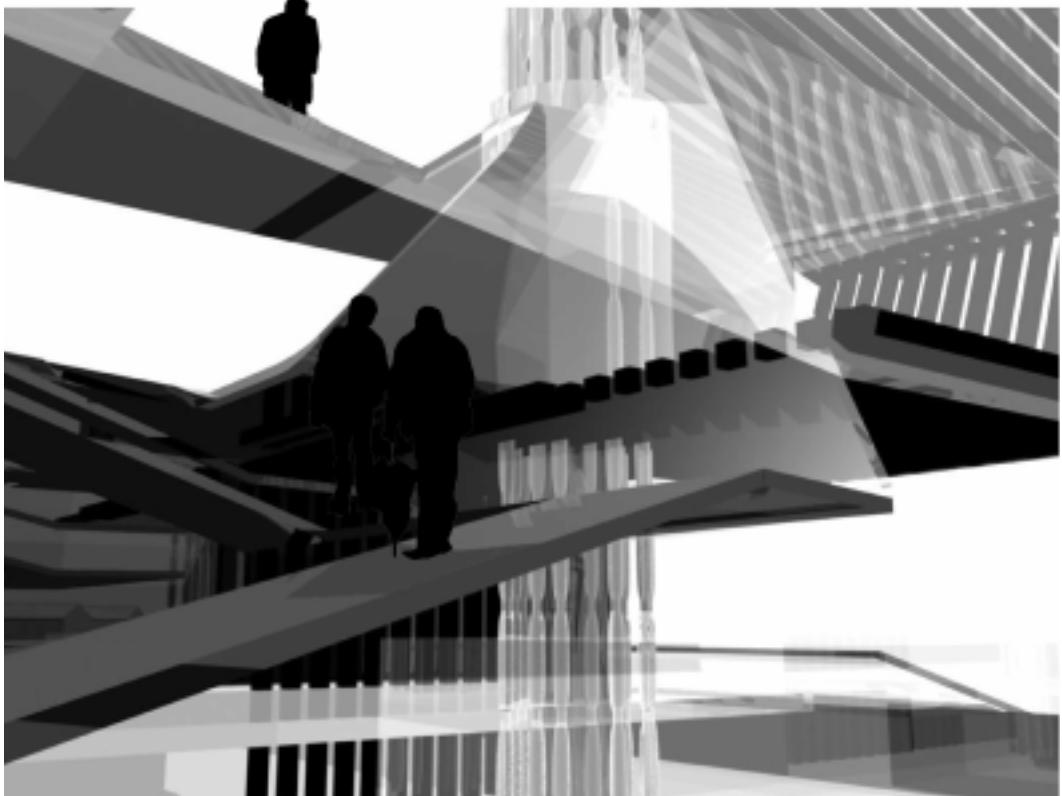
Water Cycle of the Teahouse

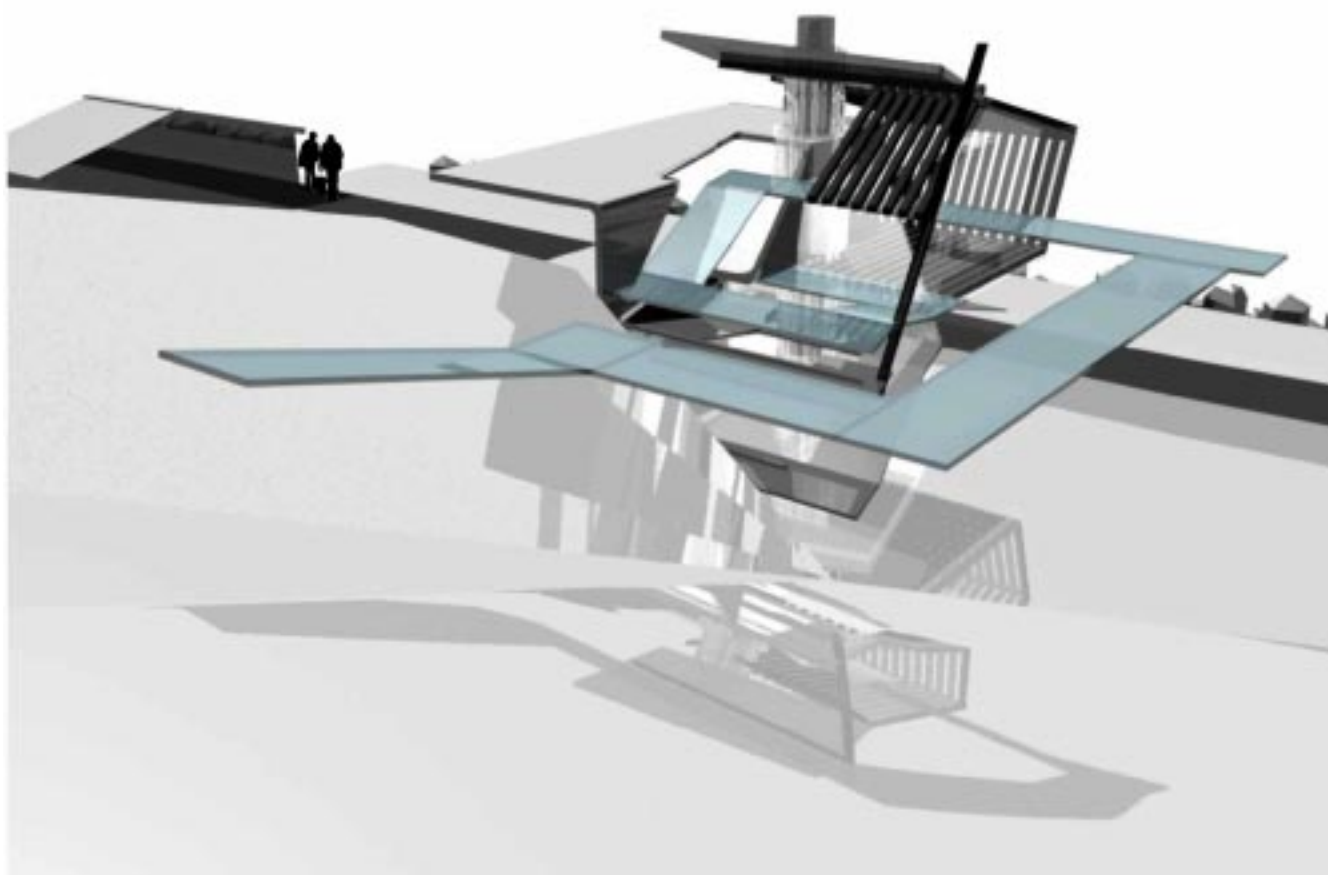












Reference Materials

- NEXT:財富.生命與智慧,在未來20年及之後的面貌 /20 Years and after, 加來道雄(Michio Kaku)著 / 陳婷,徐中緒譯, 台北市 / 大塊, 1998.
- 未來城 /A scientist in the city/ 詹姆斯.特菲爾著 / 賴慈芸譯, 台北市 / 時報文化, 1997.
- 超Hyper 空間 / 混沌現象中的空間機會 / 吳治平著, 台北市 / 創興 / 民, 87.
- 場所精神 / 邁向建築現象學 /Christian Norberg-Schulz 著 / 施植明譯, 臺北市 / 田園城市 /, 86
- 下一個基督王國 / 基督宗教全球化的來臨 / 菲立浦.詹金斯(Jenkins, Philip)著 / 梁永安譯, 台北縣新店市 / 立緒文化, 2003[民92]
- 流動、空間與社會 / 王志弘著, 台北市 / 田園城市文化, 1998[民87]
- 新竹市眷村田野調查報告書 / 竹籬笆內的春天 / 林樹等著, 新竹市 / 新竹市立文化中心, 1997[民86]