

Appendix 1 Evaluation of the method and other published potentials on decoy sets from Decoys'R'Us

Evaluation of the method on decoy sets from Decoys'R'Us

| Name of set | Number of proteins | Average number of decoys per set (~) | Reference |
|-----------------------------------|--------------------|--------------------------------------|--|
| ig_structal_hires | 29 | 19 | Samudrala et al, 1998c |

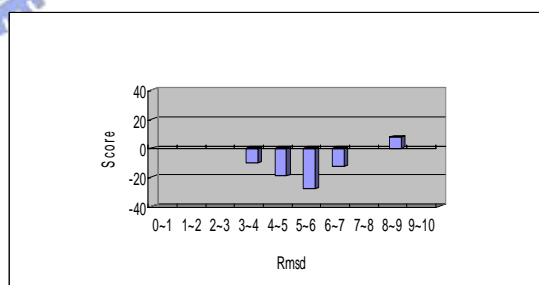
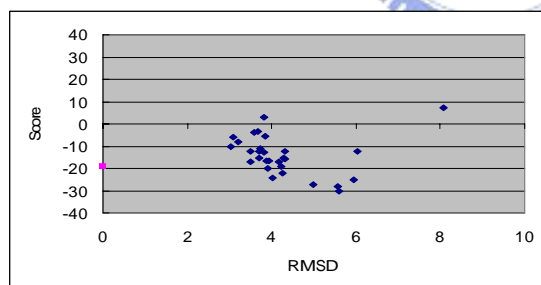
List

[2lhb](#) [1ash](#) [1myt](#) [1ecd](#) [1emy](#) [1cpc-A](#) [1flp](#) [1bab-b](#) [1col-A](#) [1gdm](#)
[1hbg](#) [1hbh-A](#) [1hbh-B](#) [1hda-B](#) [lith-A](#) [1hlb](#) [1hlm](#) [1hsy](#) [1lht](#) [1mba](#)
[1mbs](#) [2dhb-A](#) [2dhb-B](#) [2lhb](#) [1myg-A](#) [1myj-A](#) [2pgh-A](#) [2pgh-B](#) [4sdh-A](#)

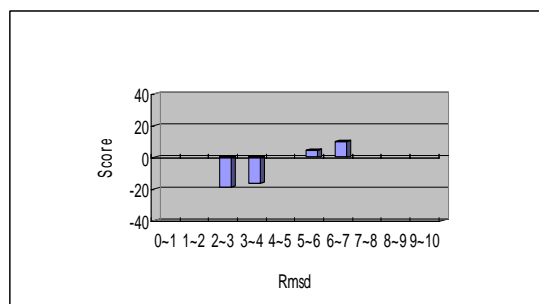
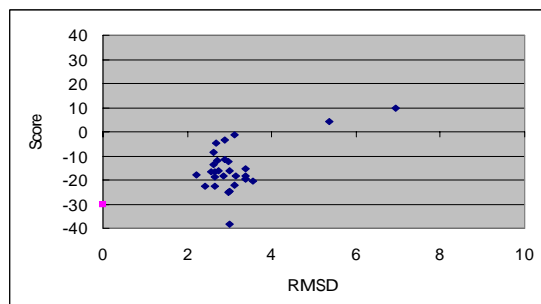
RMSD = 0 : Native structure



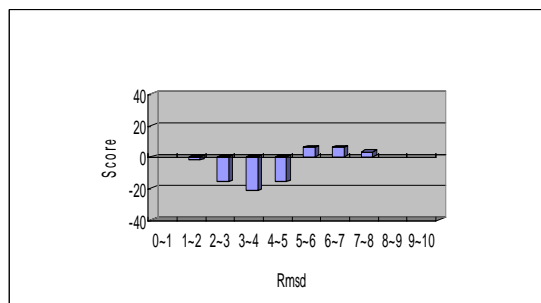
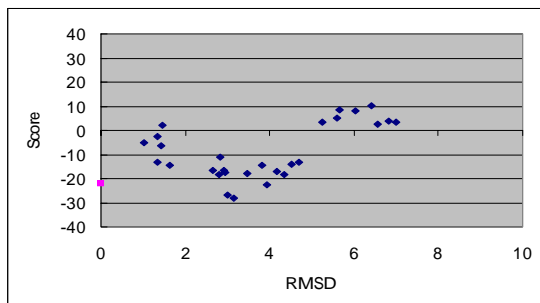
(1) **2lhb**



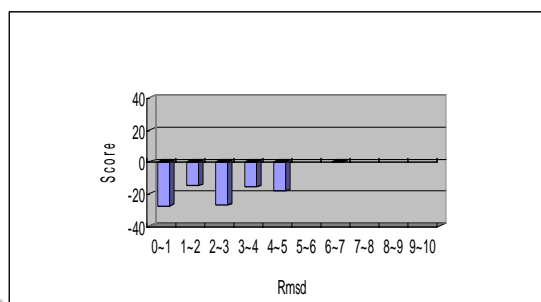
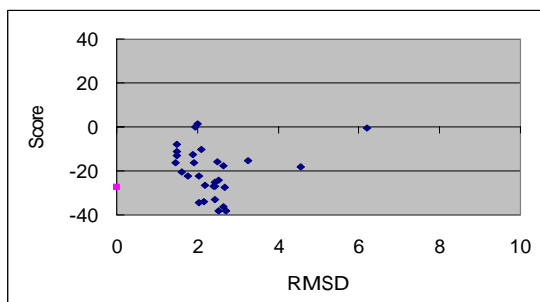
(2) **1ash**



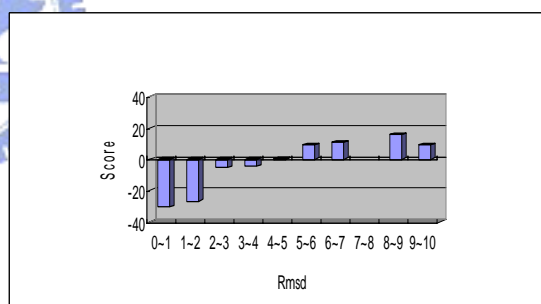
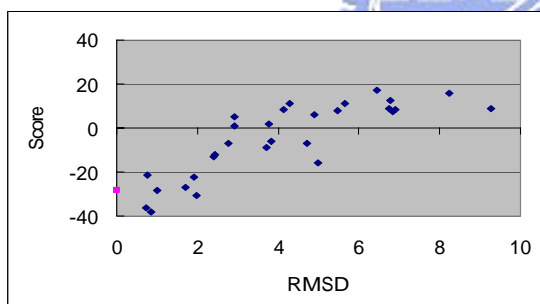
(3) 1myt



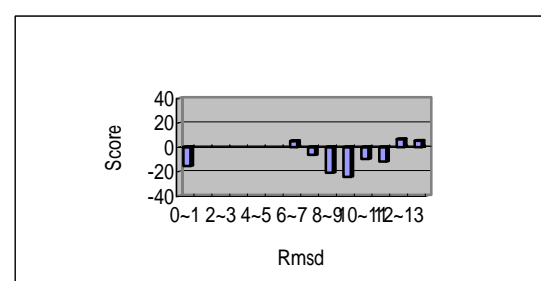
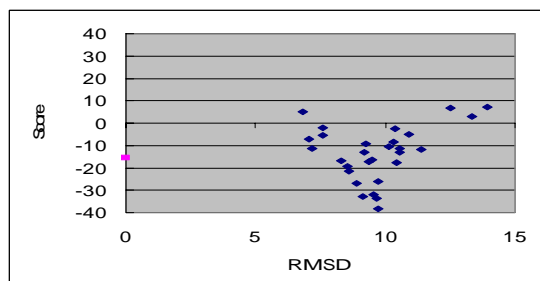
(4) 1ecd



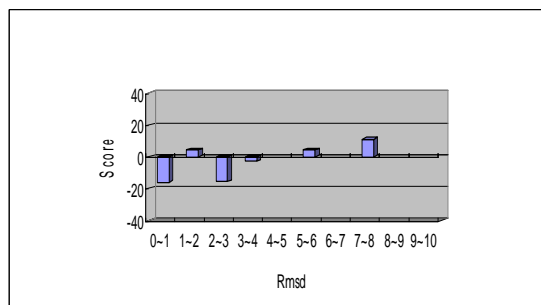
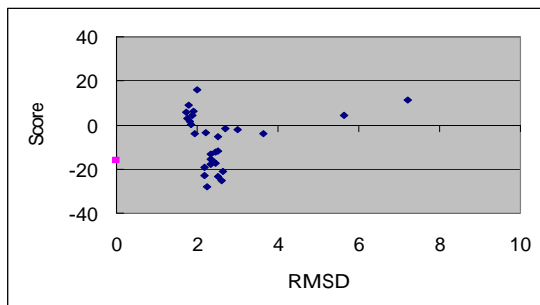
(5) 1emy



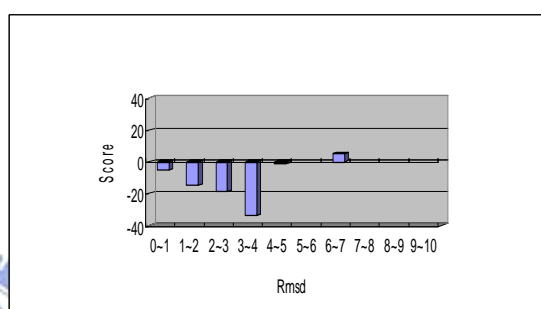
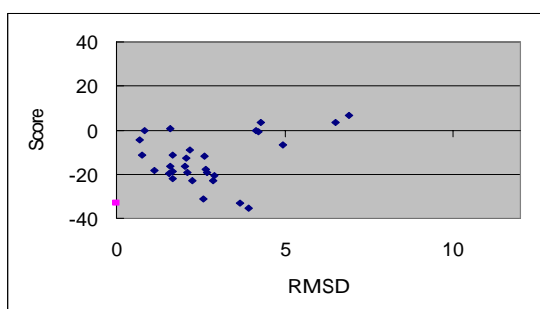
(6) 1cpc-A



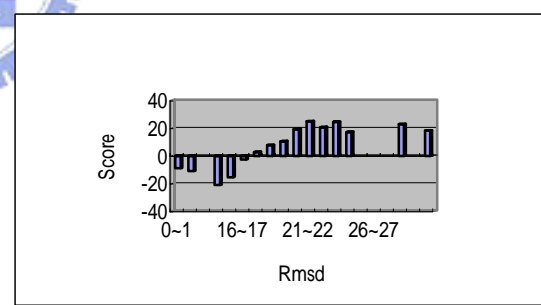
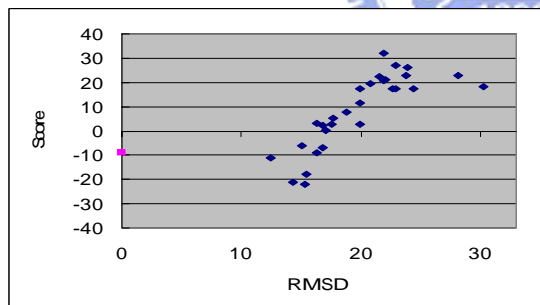
(7) 1flp



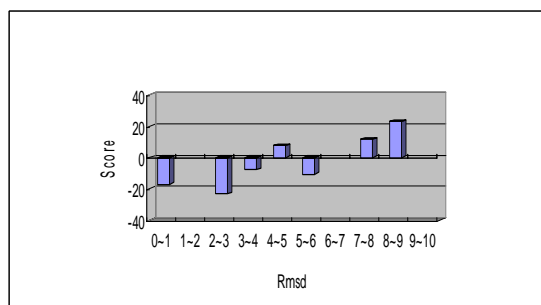
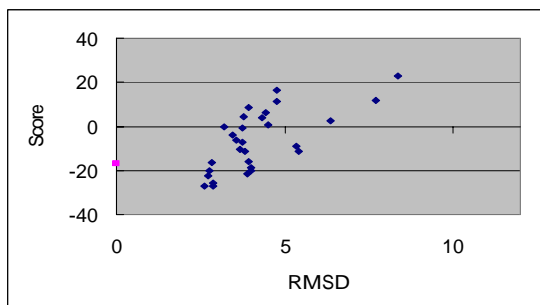
(8) 1bab-b



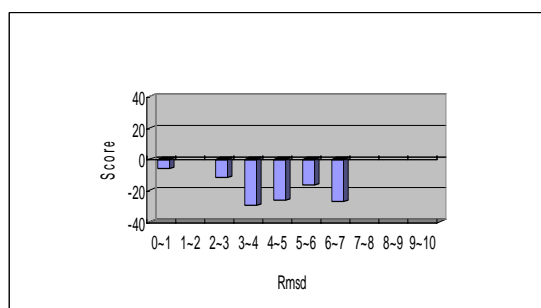
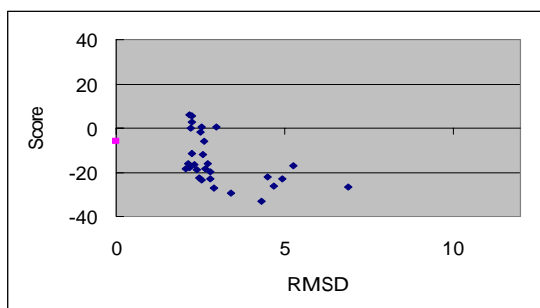
(9) 1col-A



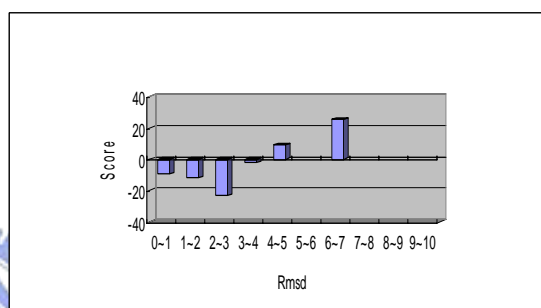
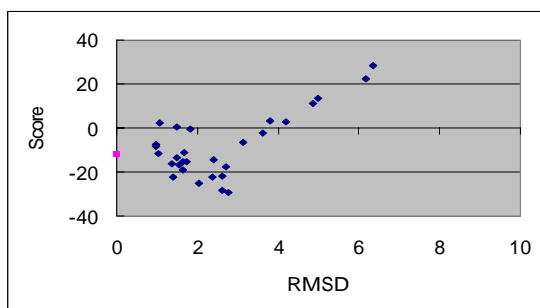
(10) 1gdm



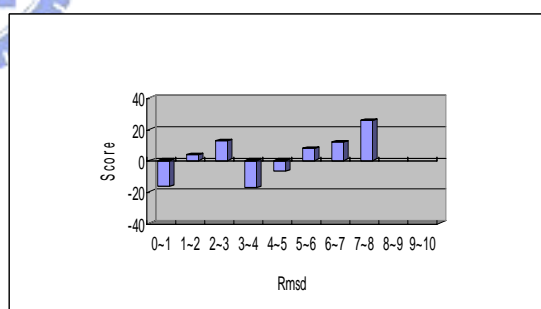
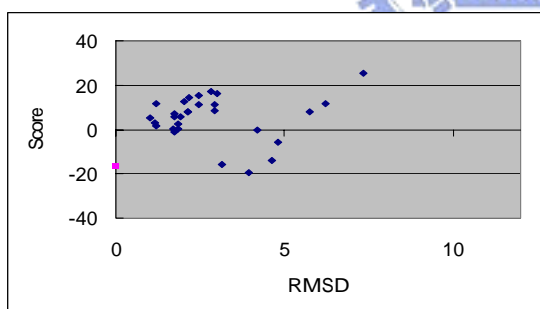
(11) 1hbg



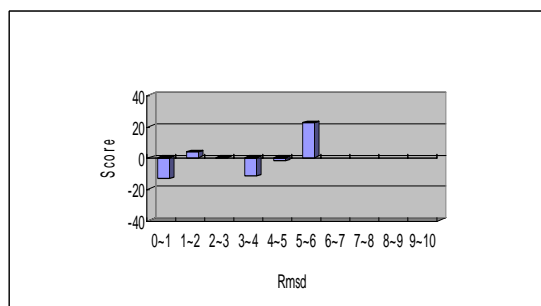
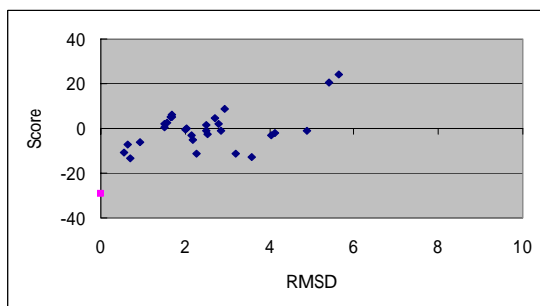
(12) 1hbh-A



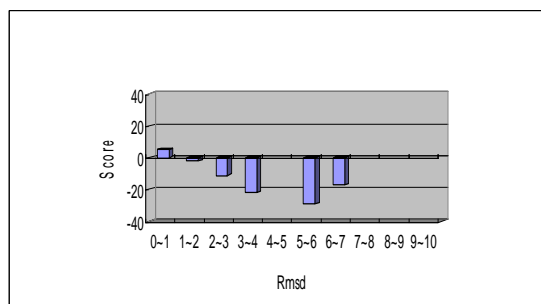
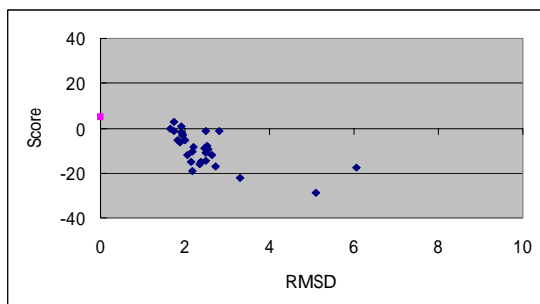
(13) 1hbh-B



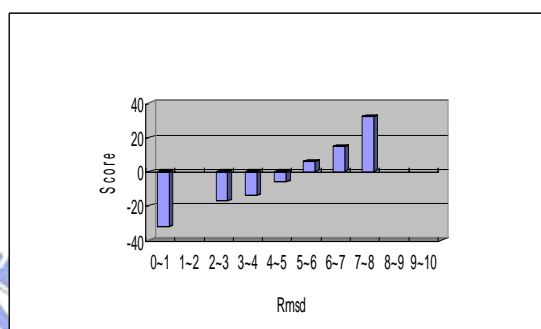
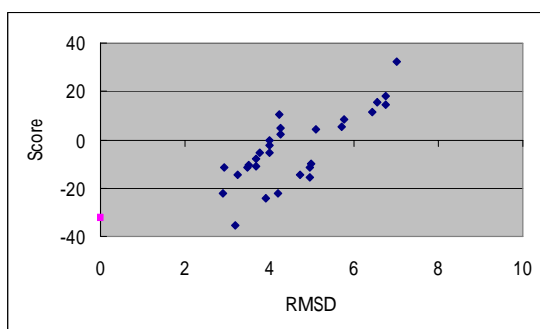
(14) 1hda-B



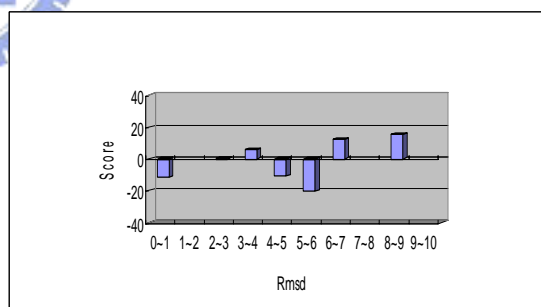
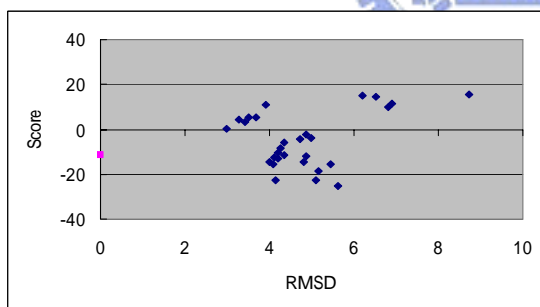
(15) lith-A



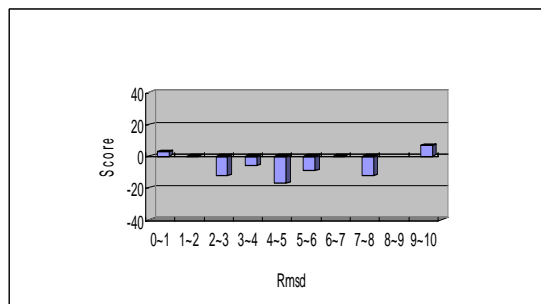
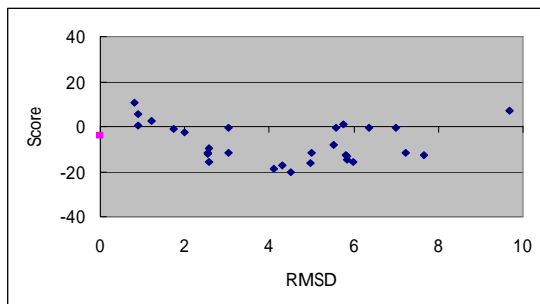
(16) 1hlb



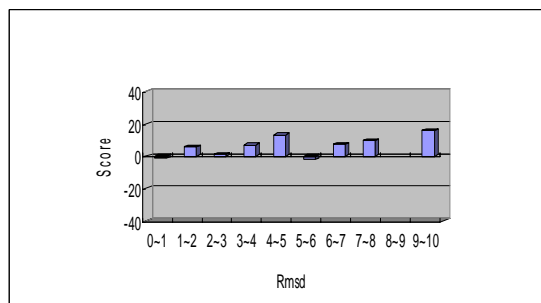
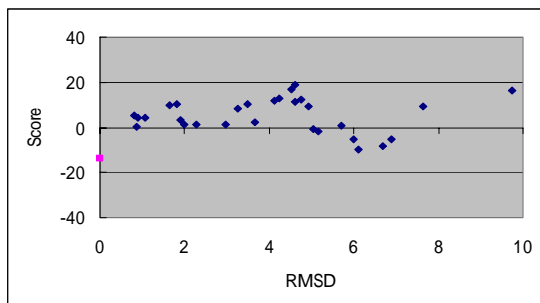
(17) 1hlm



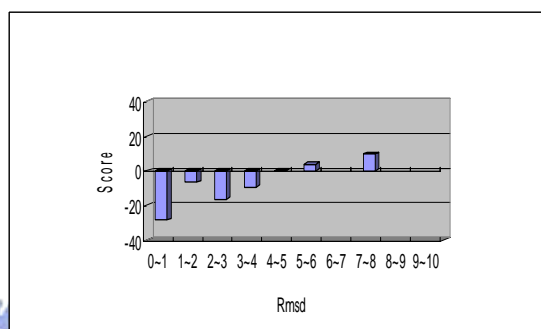
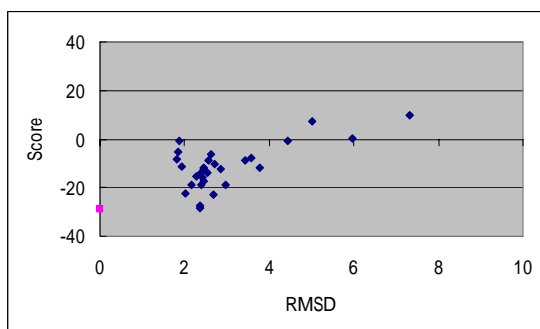
(18) 1hsy



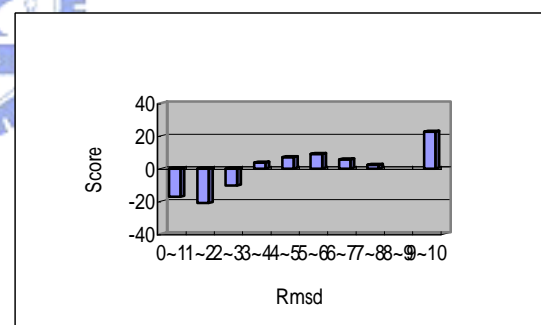
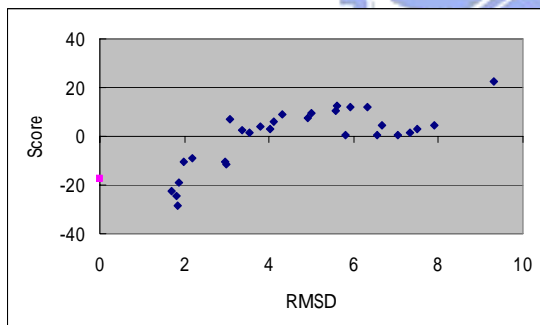
(19) 1lht



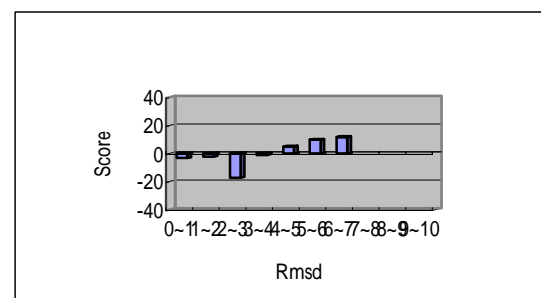
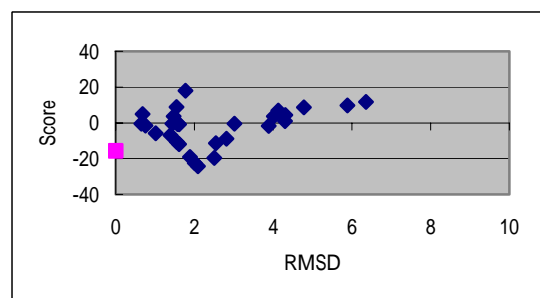
(20) 1mba



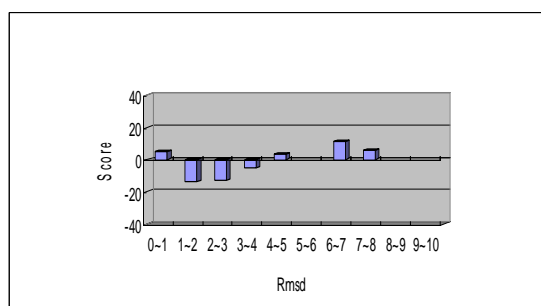
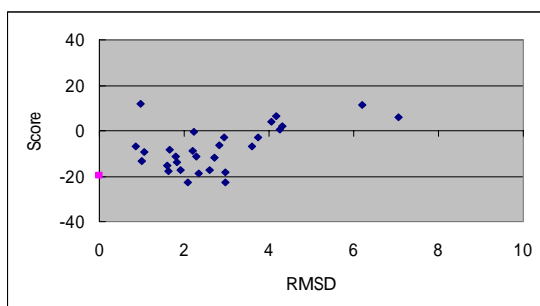
(21) 1mbs



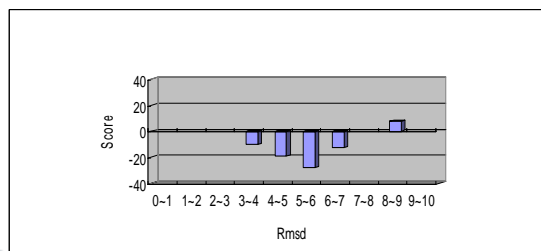
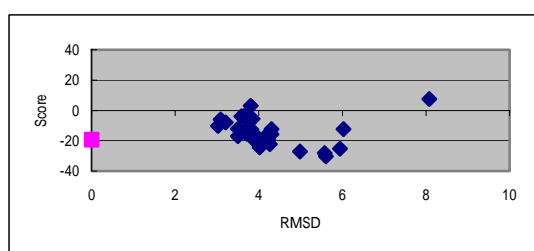
(22) 2dhb-A



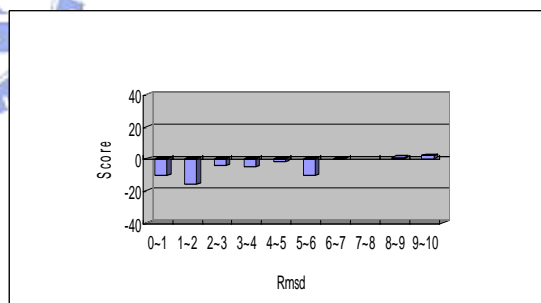
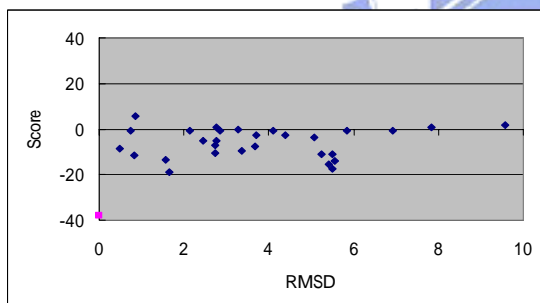
(23) 2dhh-B



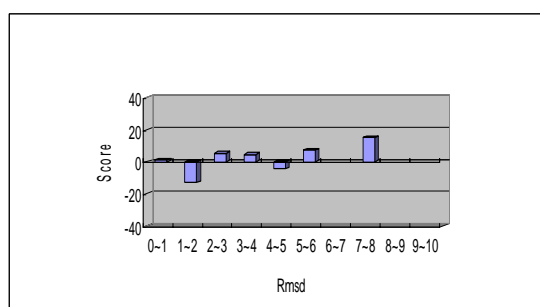
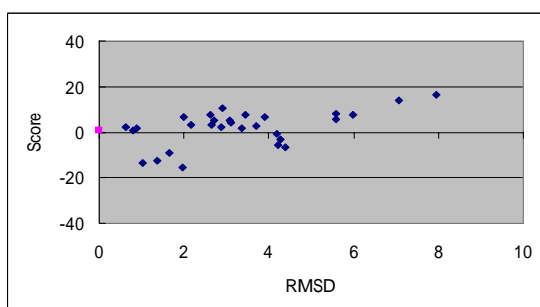
(24) 2lhb



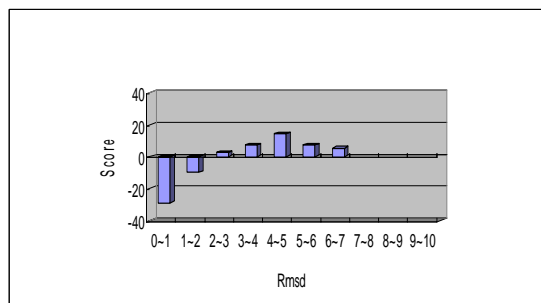
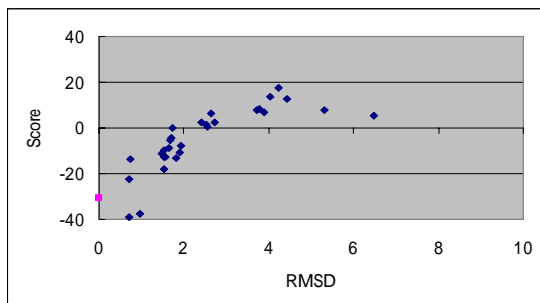
(25) 1myg-A



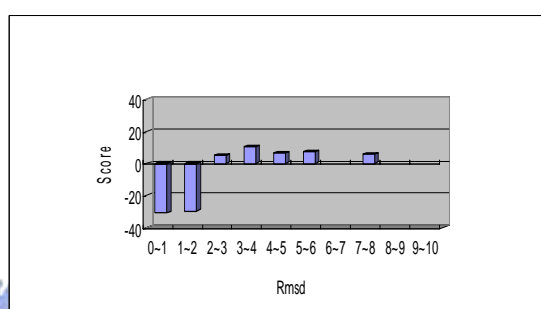
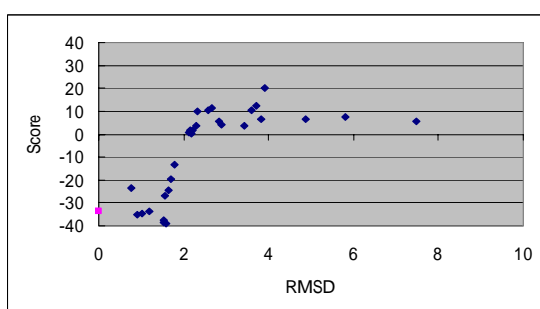
(26) 1myj-A



(27) 2pgh-A



(28) 2pgh-B



(29) 4sdh-A

