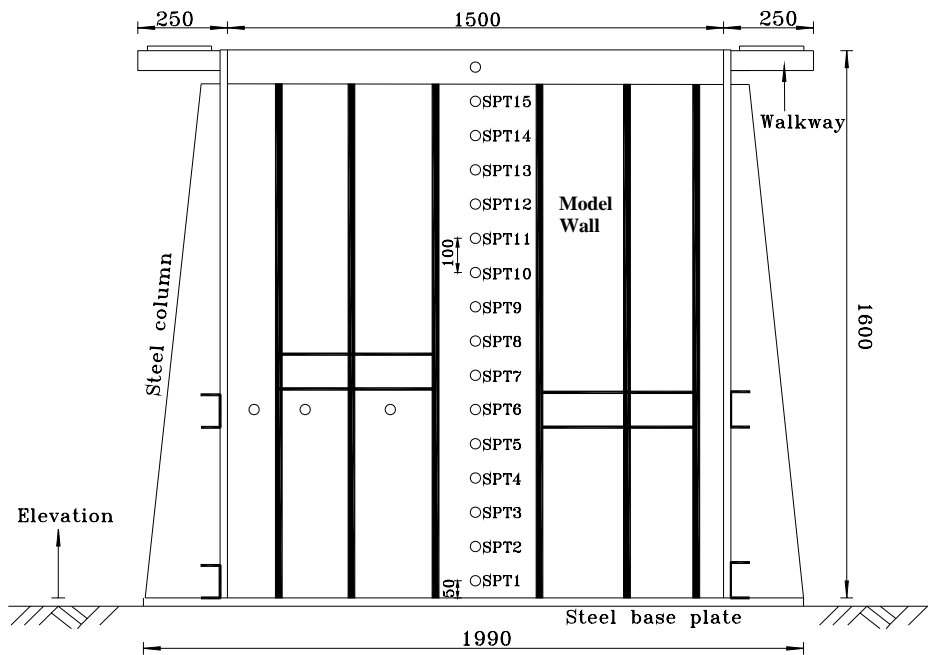


Fig. 3.1. NCTU non-yielding retaining wall



Front-view
Unit : mm

Fig. 3.2. Location of soil pressure transducer mounted on the model wall
(after Chen and Fang, 2002)



Fig. 3.3. Soil pressure transducer (Kyowa PGM-0.2KG)



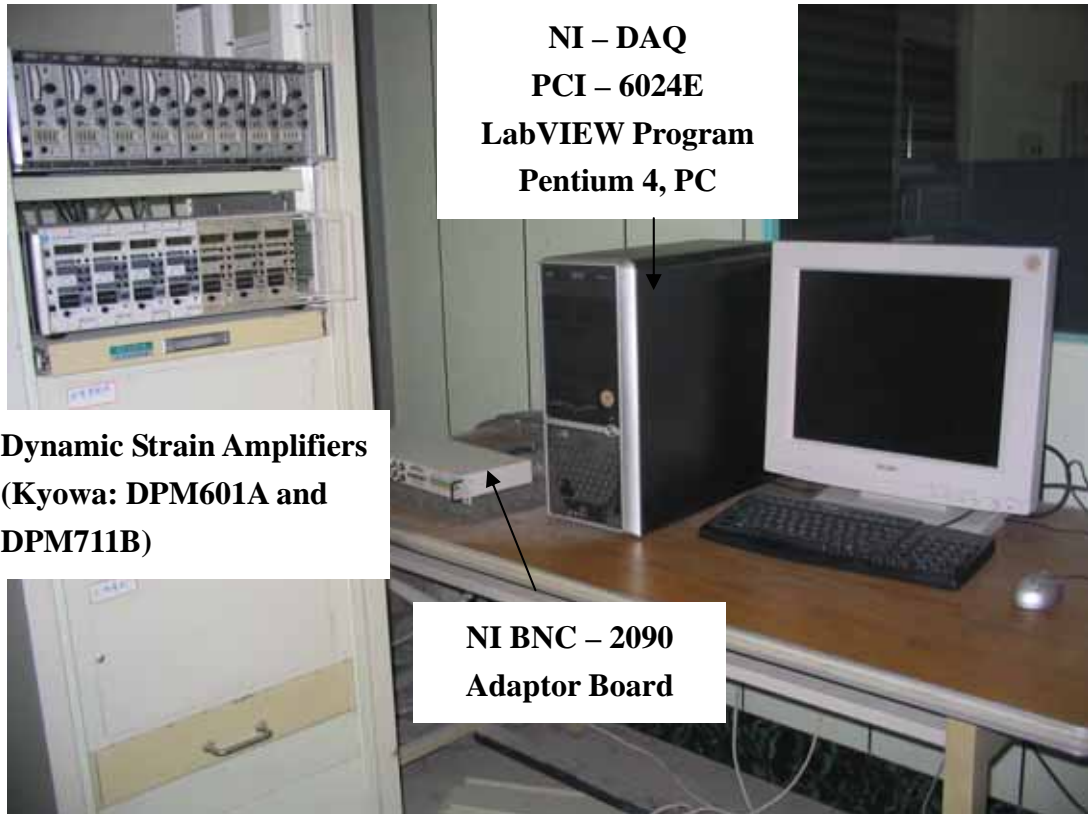
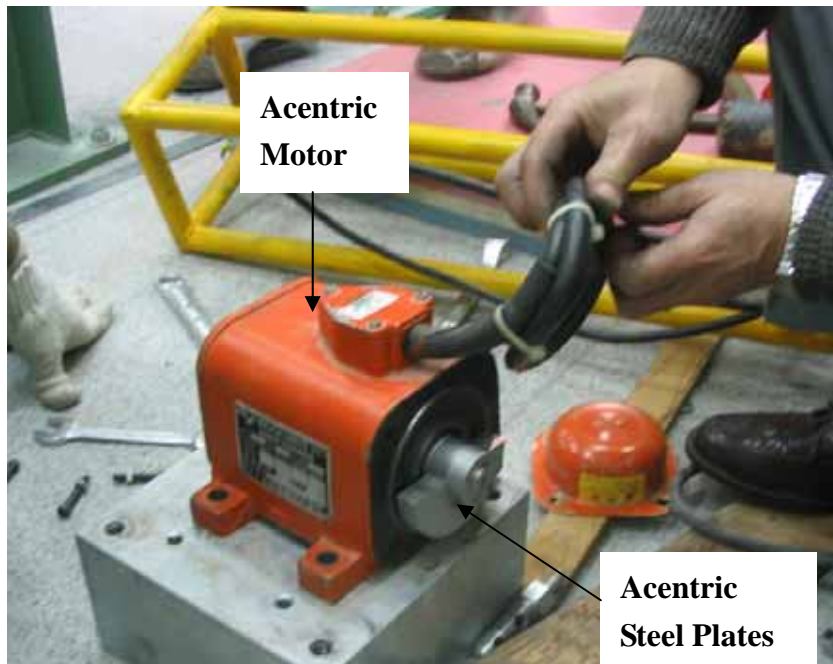
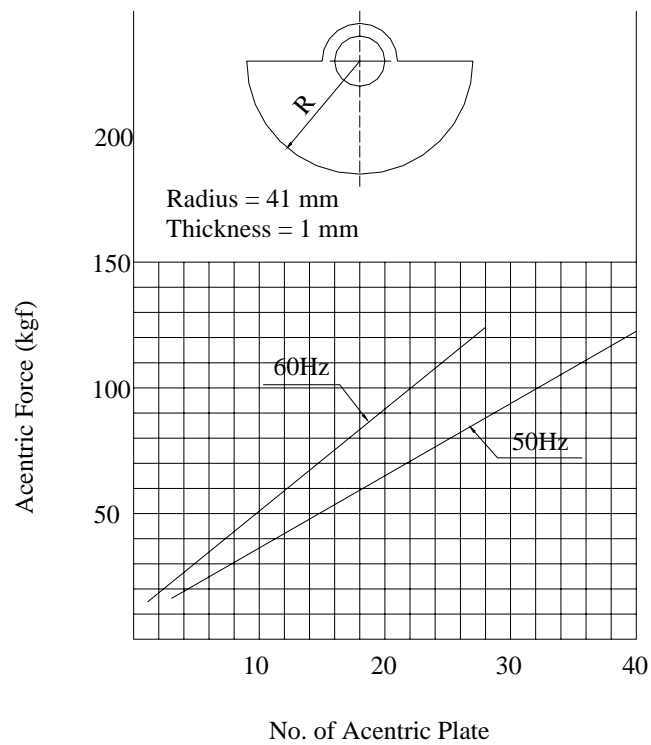


Fig. 3.4. Data acquisition system



(a)



(b)

Fig. 3.5. Acentric force as a function of number of acentric plate (Mikasa KJ75)

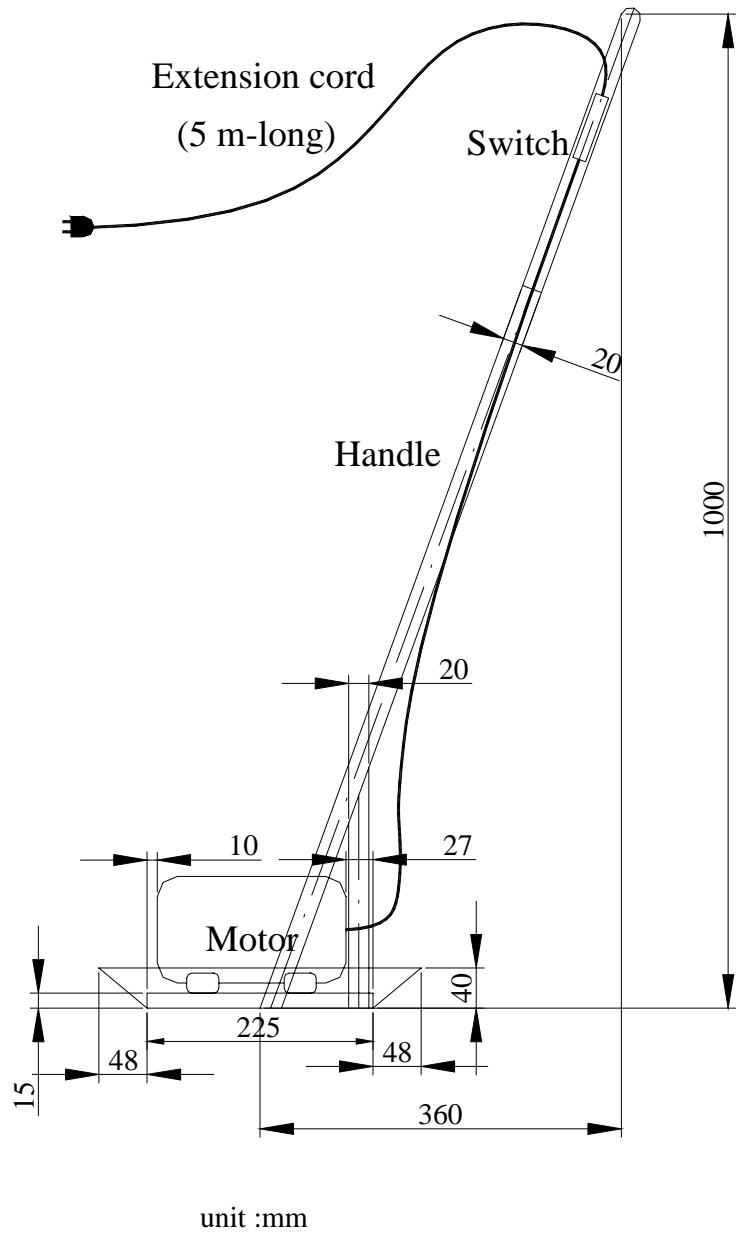


Fig. 3.6. Side-view of square vibratory soil compactor



Fig. 3.7. Square vibratory soil compactor

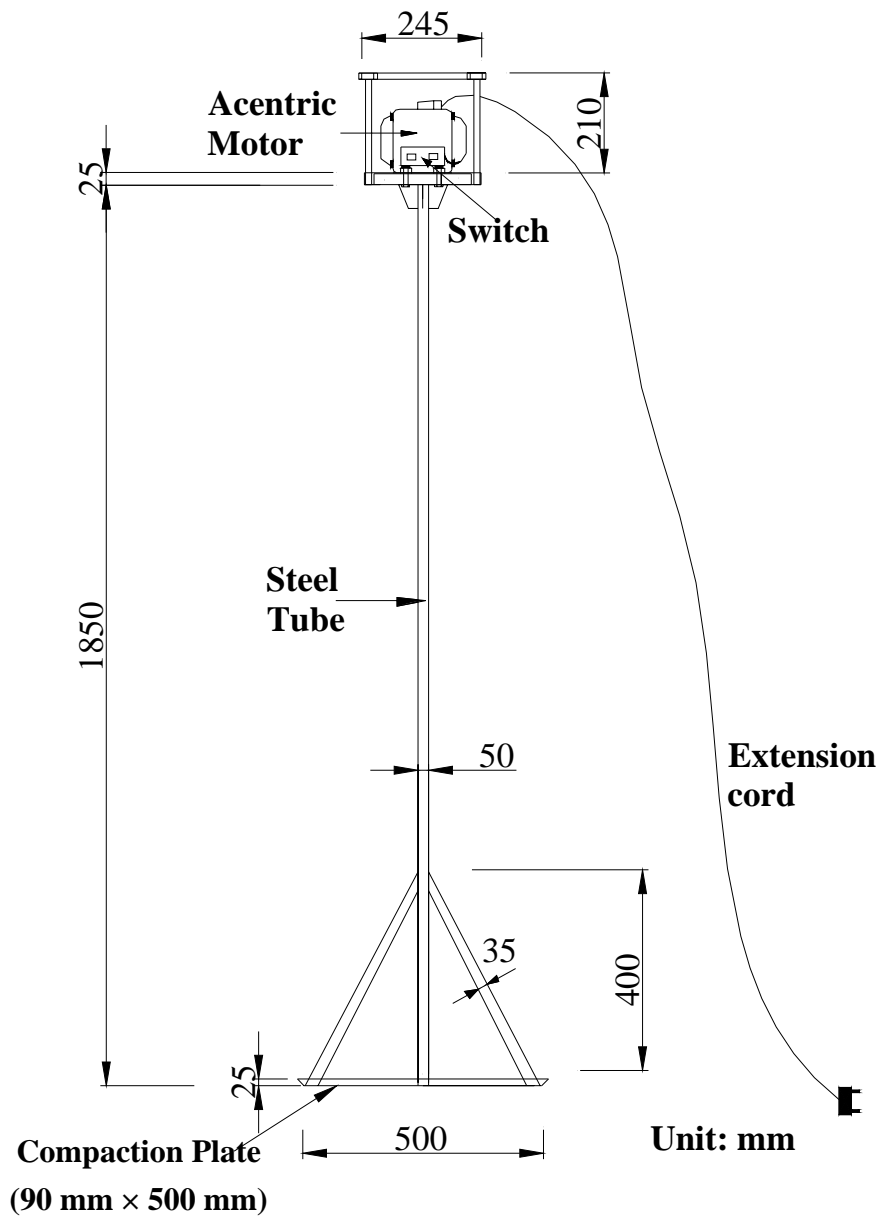


Fig. 3.8. Strip vibratory soil compactor

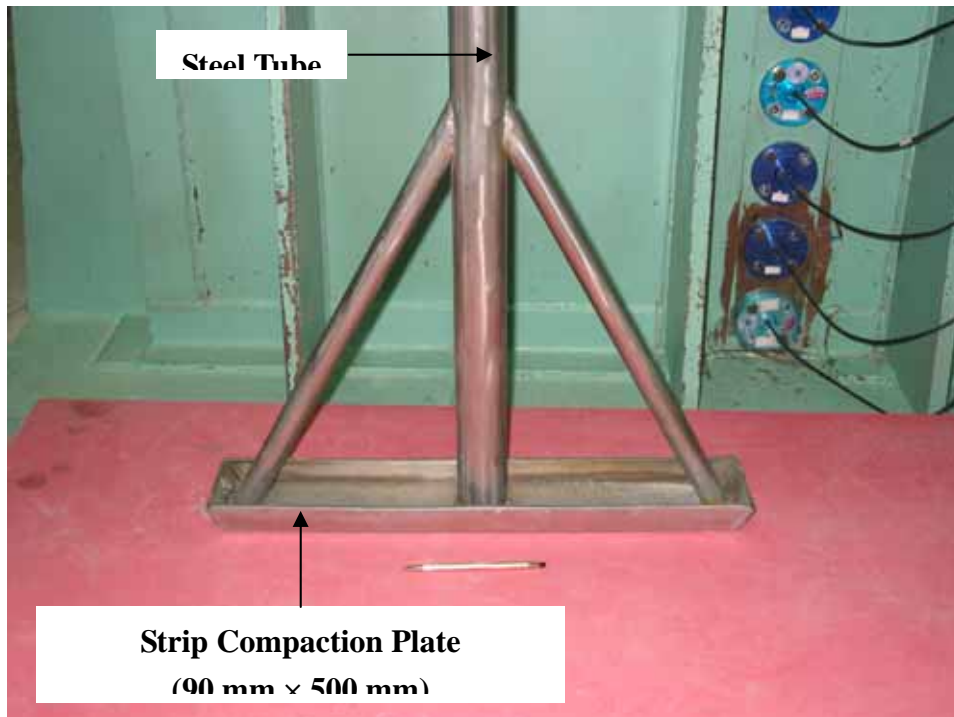


(a) Strip compactor and model wall (Front-view)



(b) Strip compactor and model wall (Side-view)

Fig. 3.9. Strip vibratory soil compactor



(c) Strip compaction plate



(d) Acentric motor on top of compactor

Fig. 3.9. Strip vibratory soil compactor (cont'd)



(a) Compaction of backfill by square compactor at $H = 1.2$ m



(b) Compaction of backfill by strip compactor at $H = 0.4$ m

Fig. 3.10. Compaction of backfill



Fig. 3.11 Strip vibratory compactor and extended cushion

