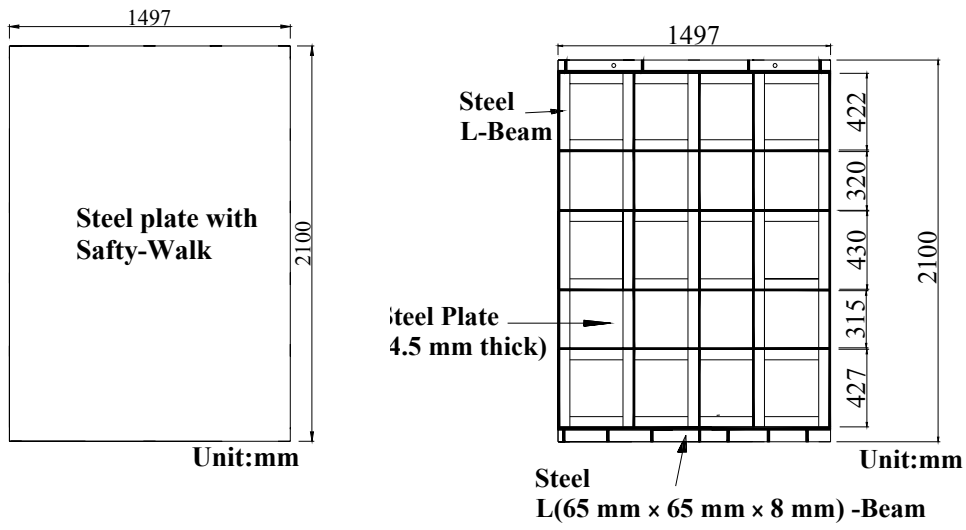
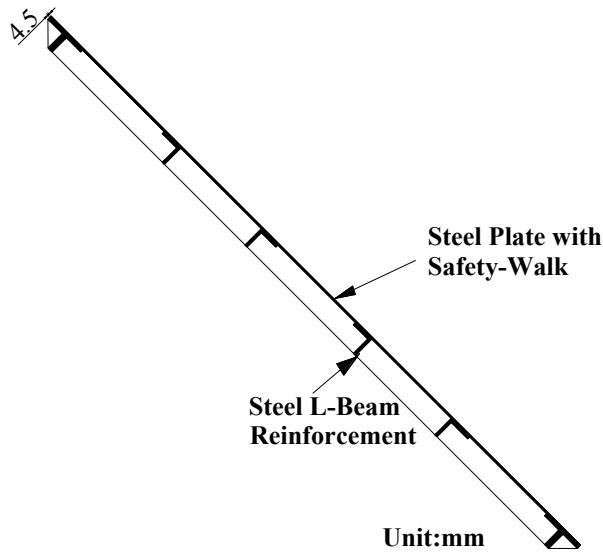


Fig. 4.1. Steel interface plate and non-yielding wall



(a) Front-view

(b) Back-view

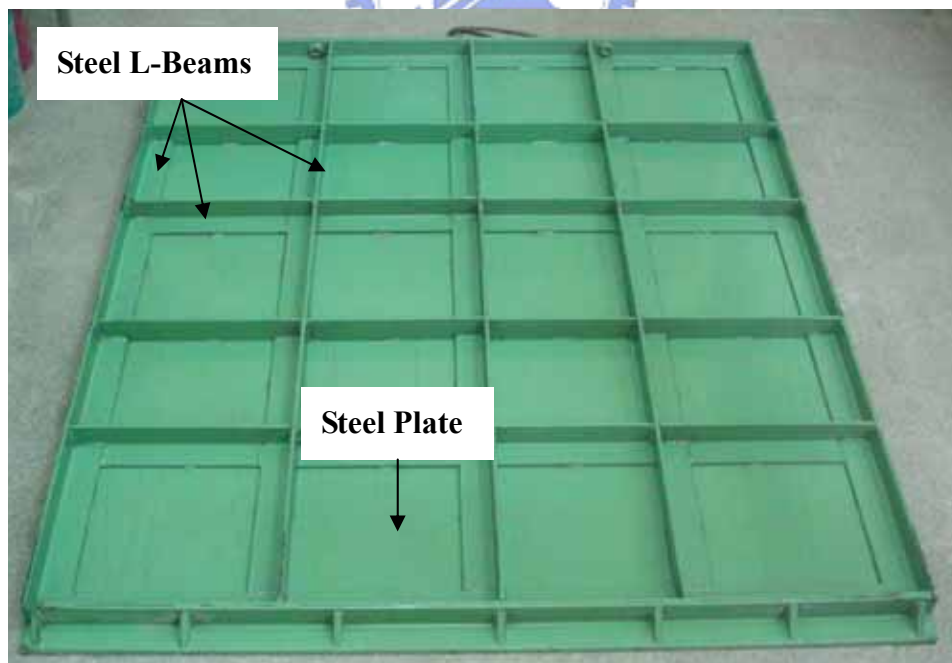


(c) Side-view

Fig. 4.2. 2100 mm × 1497 mm steel interface plate



(a) Front-view



(b) Back-view

Fig. 4.3. Steel interface plate

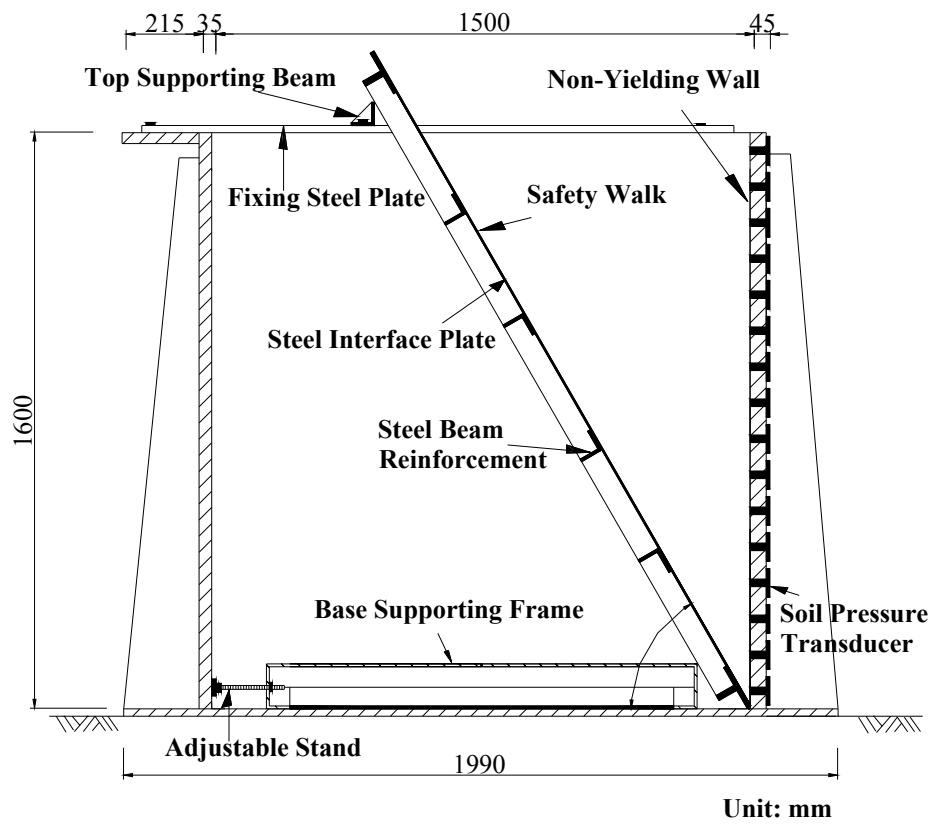
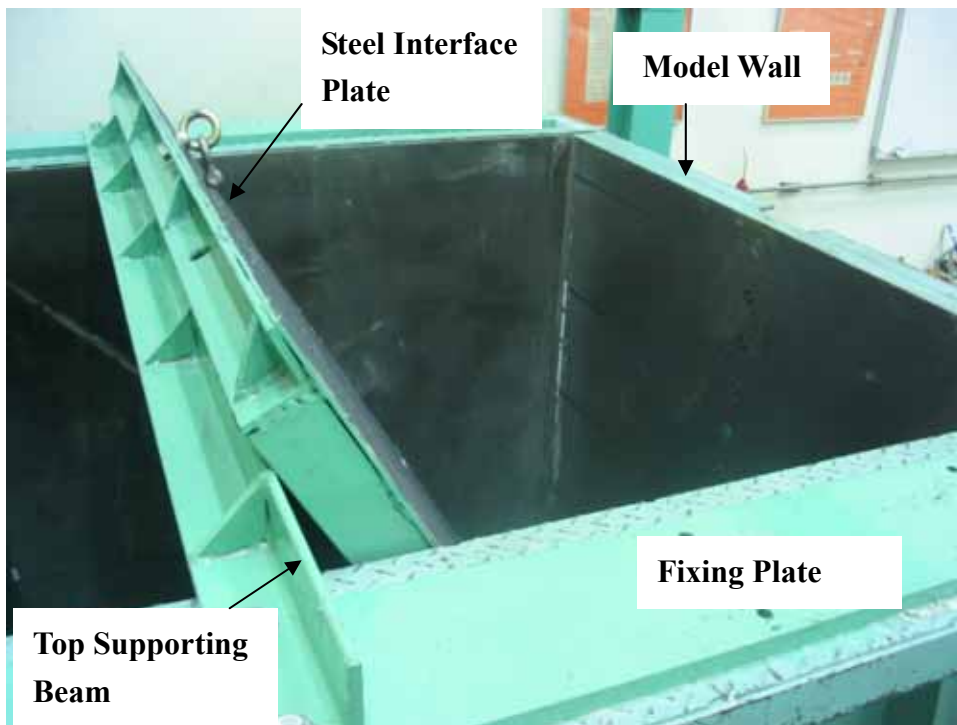


Fig. 4.4. Side-view of steel interface plate and non-yielding wall



(a)



(b)

Fig. 4.5. Non-yielding wall and steel interface plate

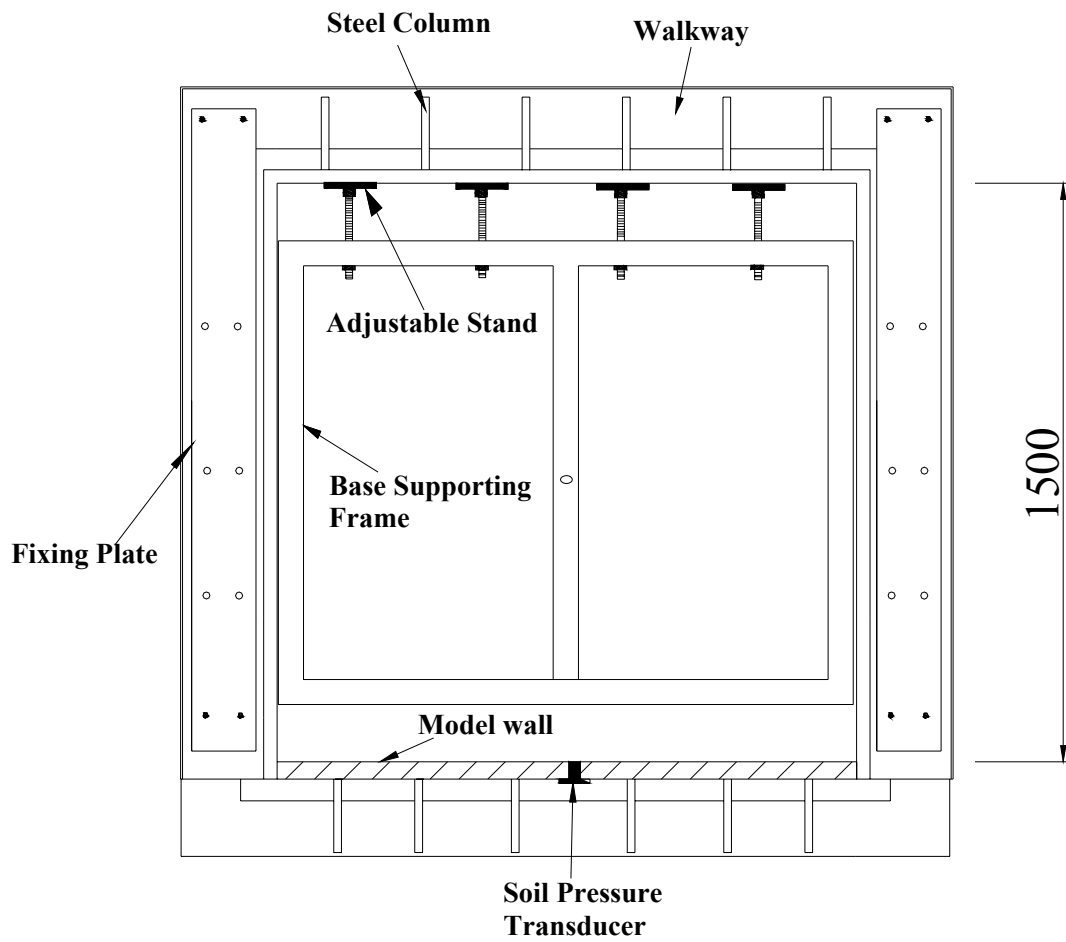


Fig. 4.6. Top-view of supporting frame and model wall

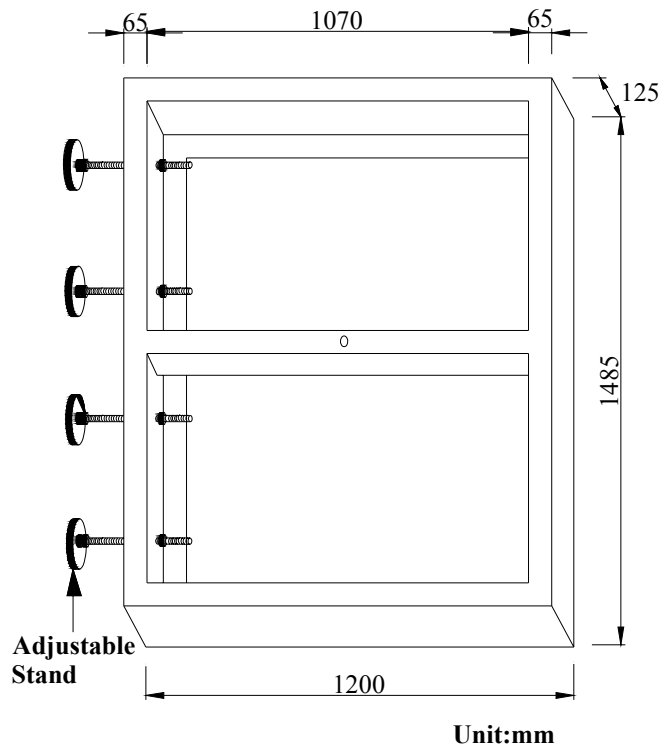


Fig. 4.7. Base supporting frame

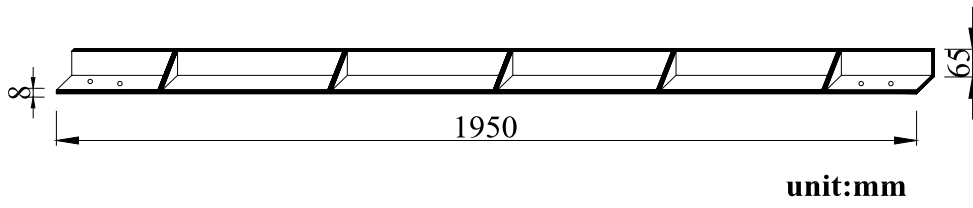
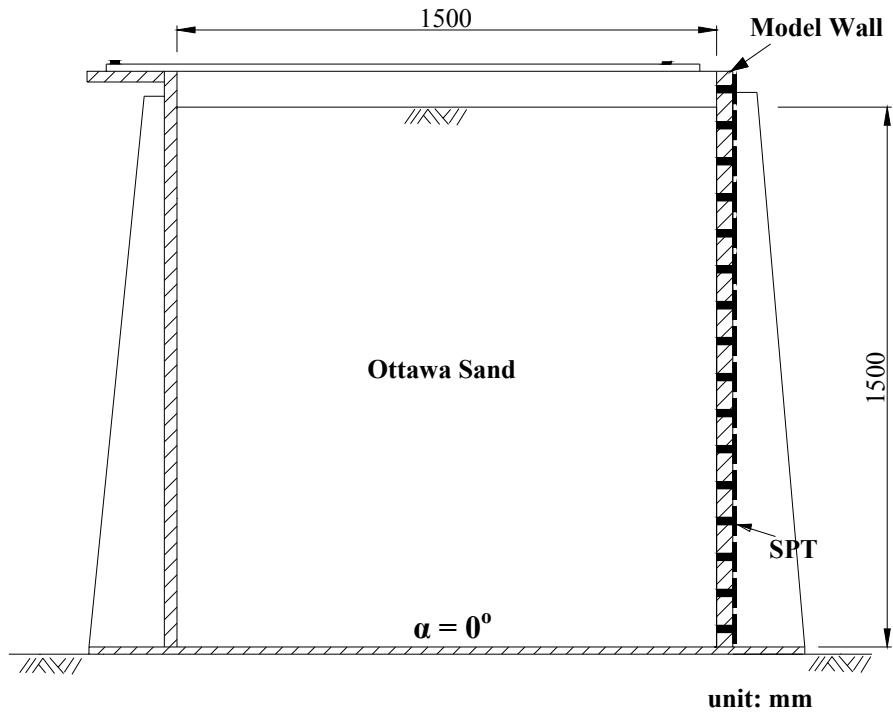


Fig. 4.8. Top supporting beam

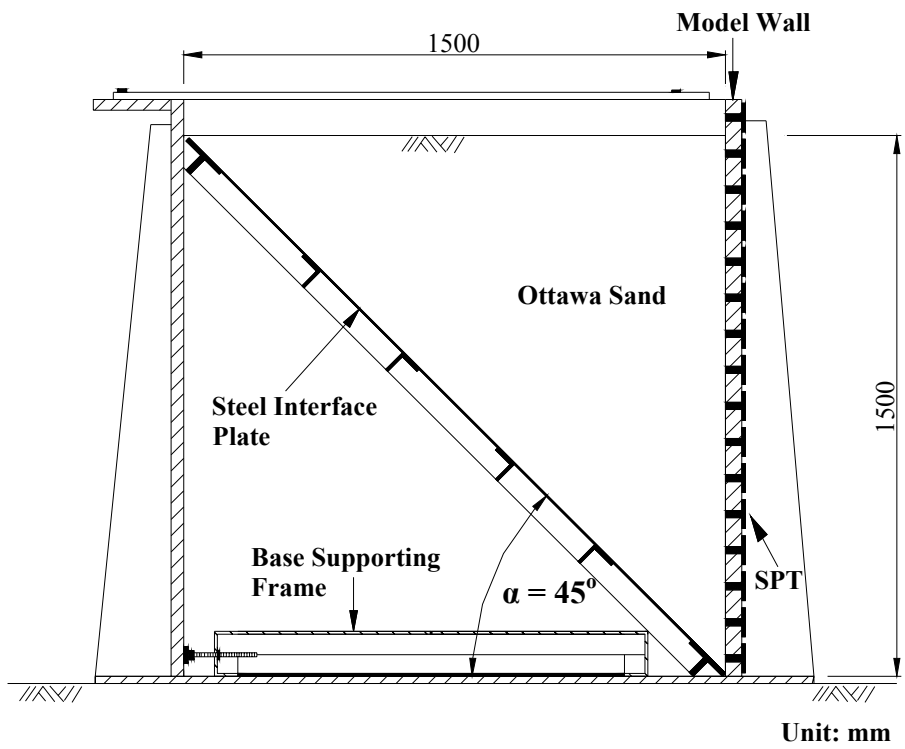


(a)

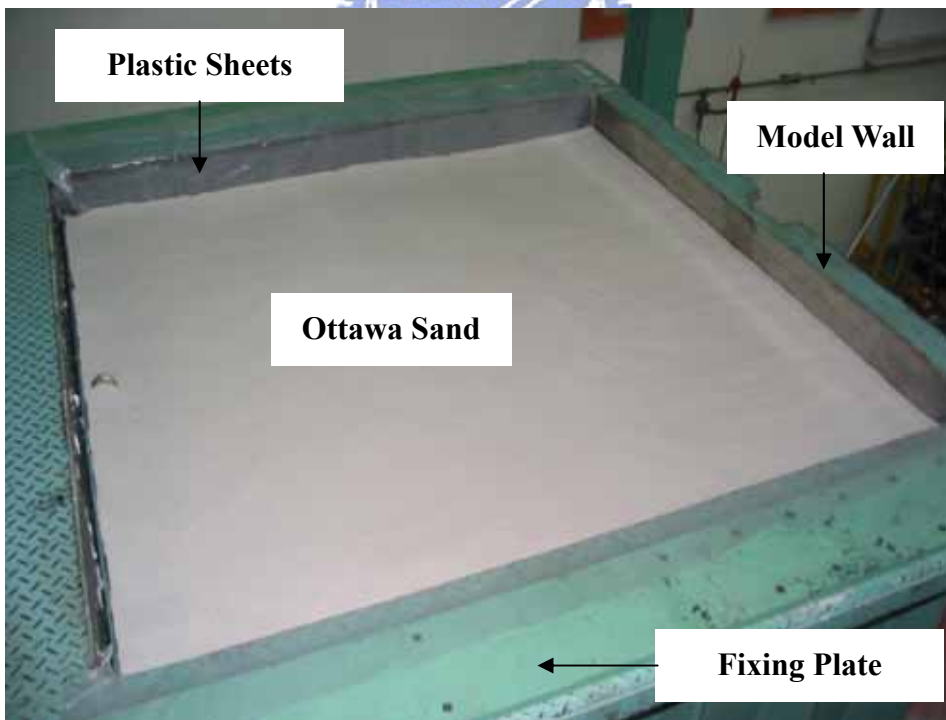


(b)

Fig. 4.9. Interface inclination, $\alpha = 0^\circ$

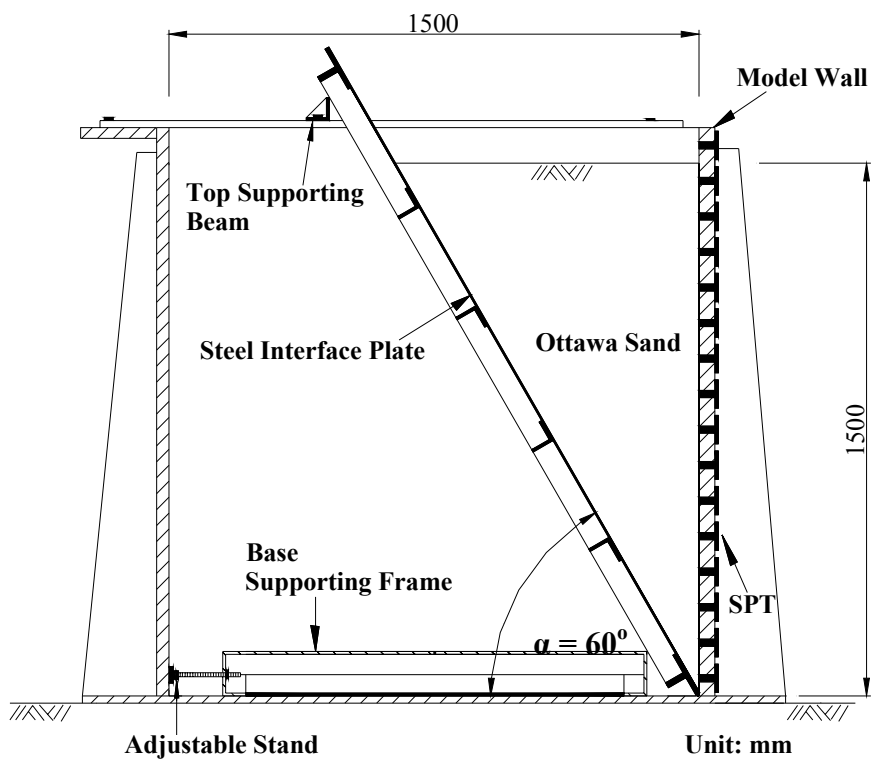


(a)

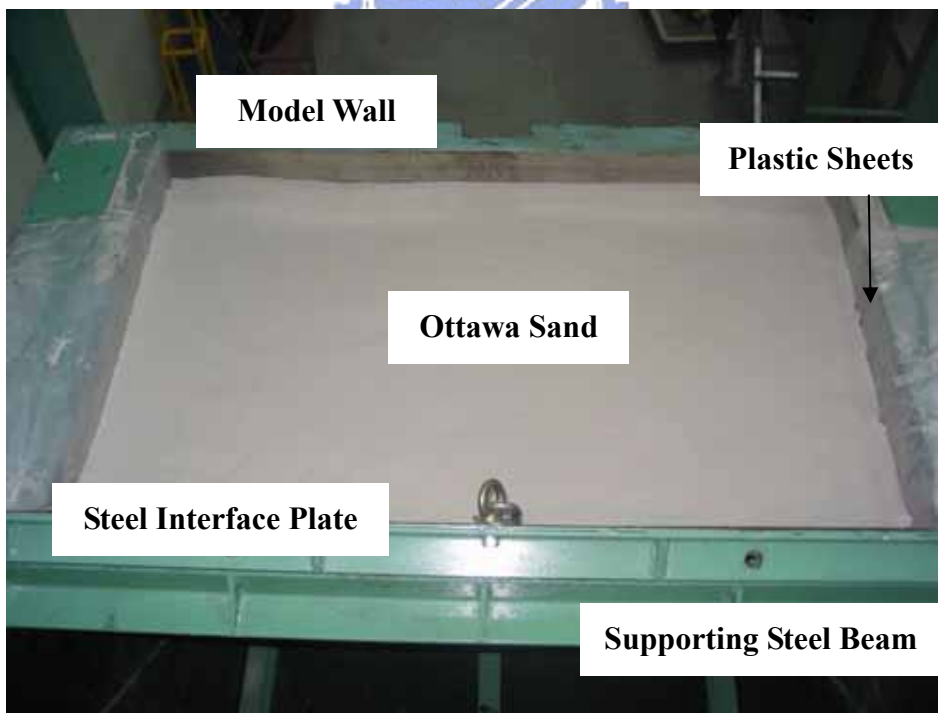


(b)

Fig. 4.10. Interface inclination, $\alpha = 45^\circ$

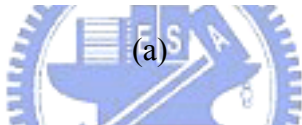
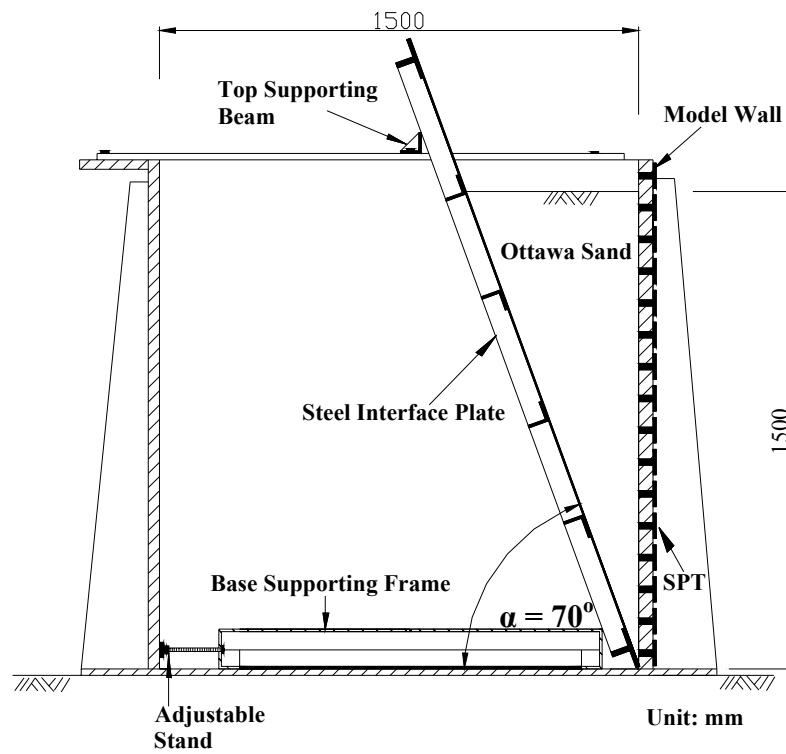


(a)

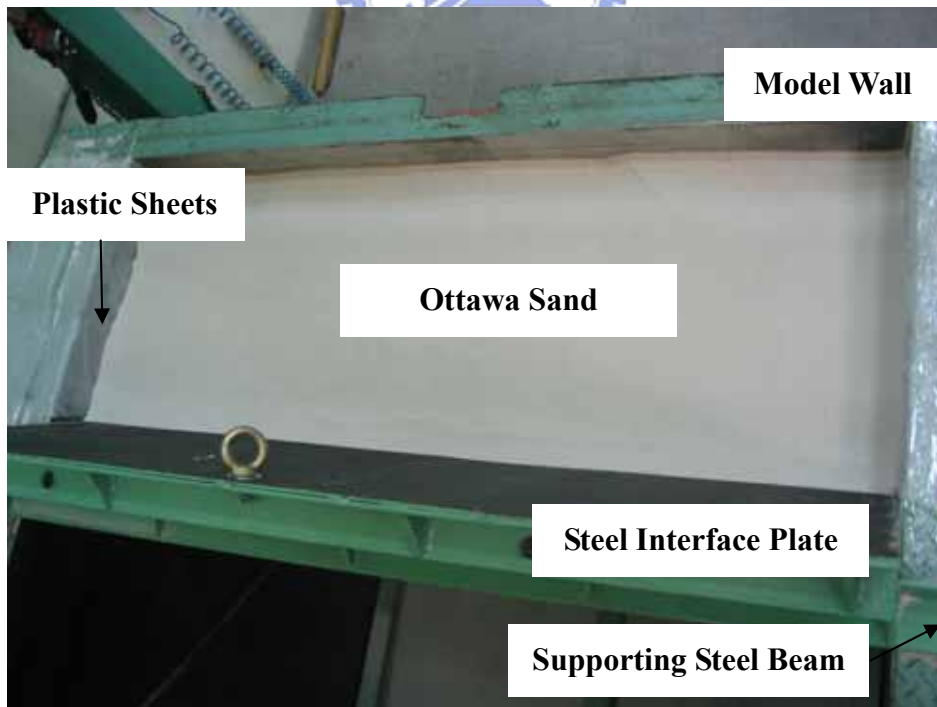


(b)

Fig. 4.11. Interface inclination, $\alpha = 60^\circ$

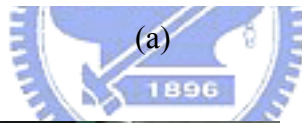
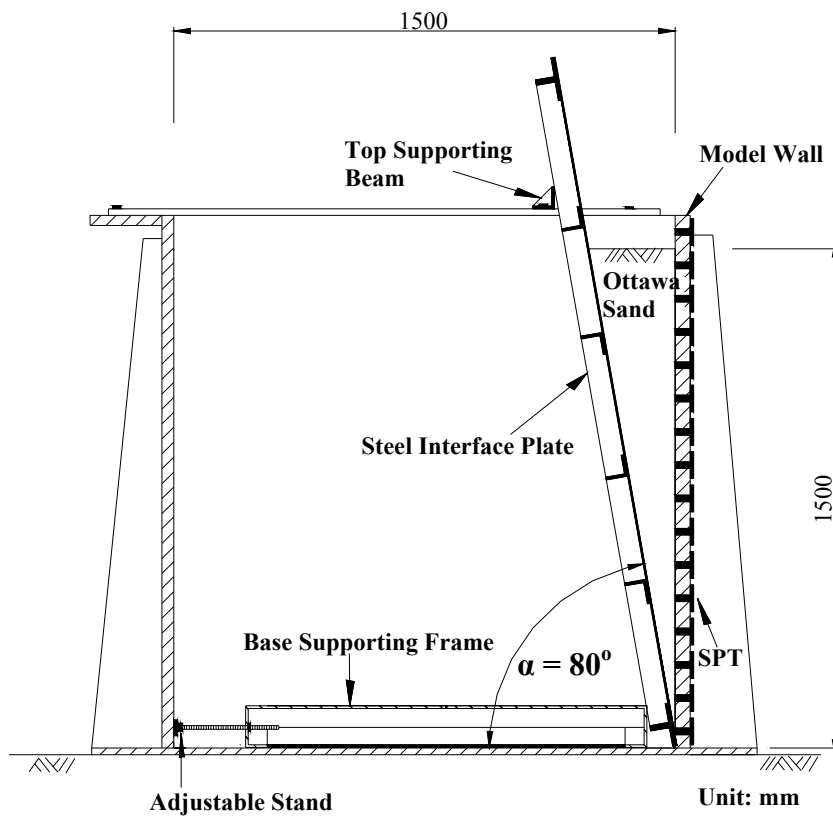


(a)

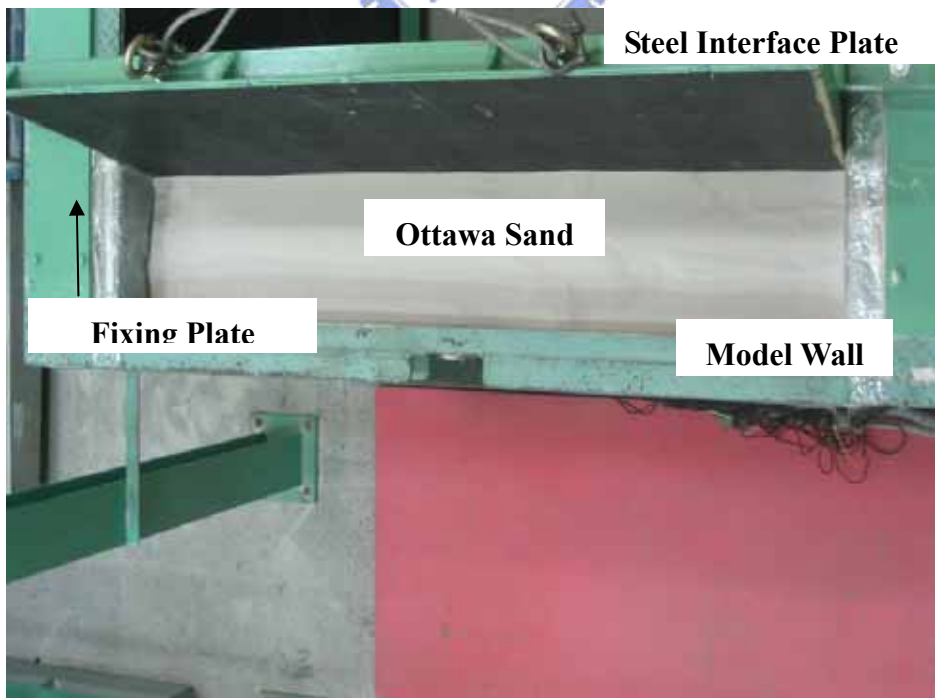


(b)

Fig. 4.12. Interface inclination, $\alpha = 70^\circ$



(a)



(b)

Fig. 4.13. Interface inclination, $\alpha = 80^\circ$