

Fig. 4-25 SEM morphologies of the as-deposited Co-assisted carbon nanocone structures for Specimen A5 after different H-plasma post-treatment times: (a) 1, (b) 3, (c) 5, (d) 7, (e) 10, and (f) 20 min.

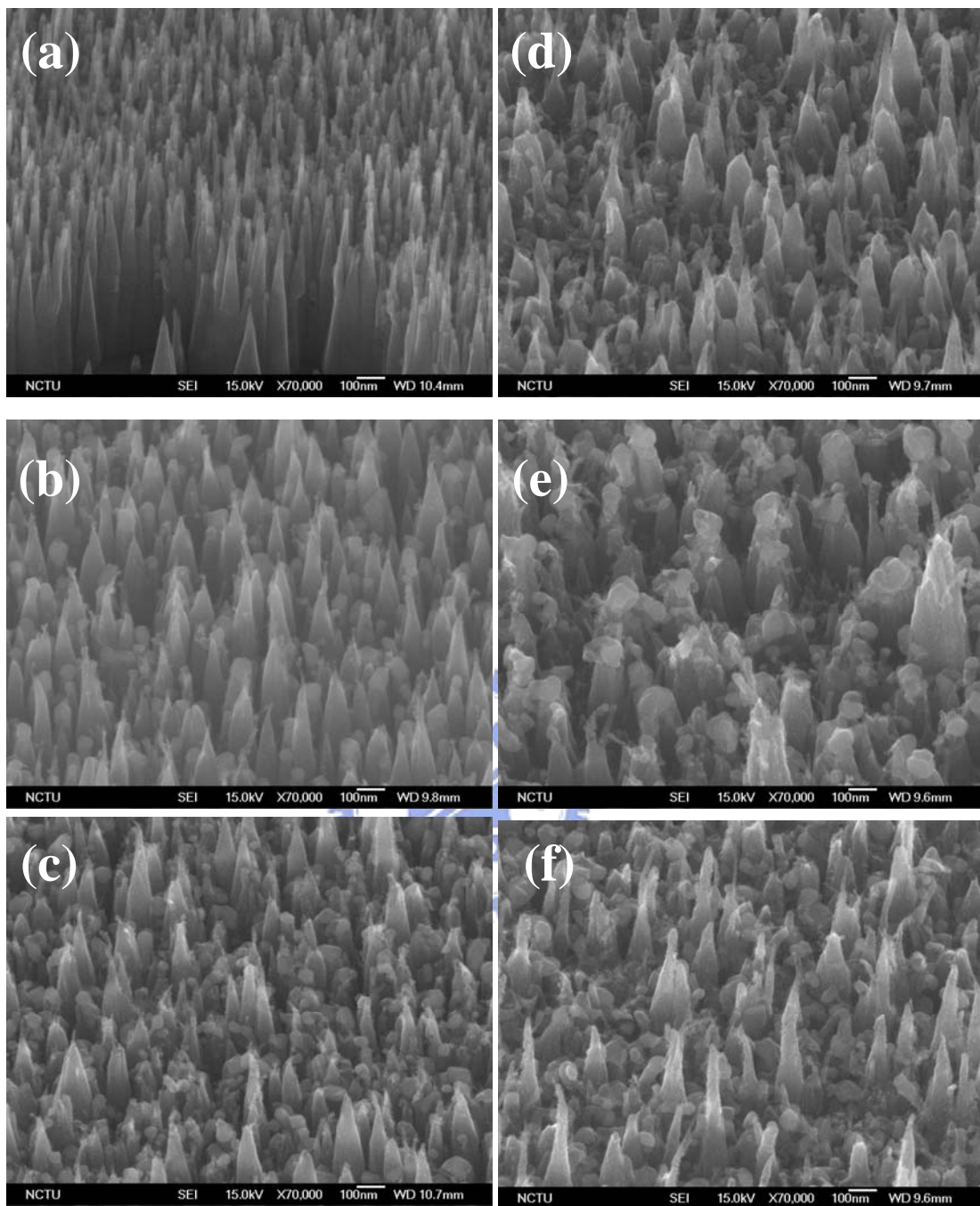


Fig. 4-26 SEM morphologies of the as-deposited Ni-assisted carbon nanocone structures for Specimen B5 after different H-plasma post-treatment times: (a) 1, (b) 3, (c) 5, (d) 7, (e) 10, and (f) 20 min.

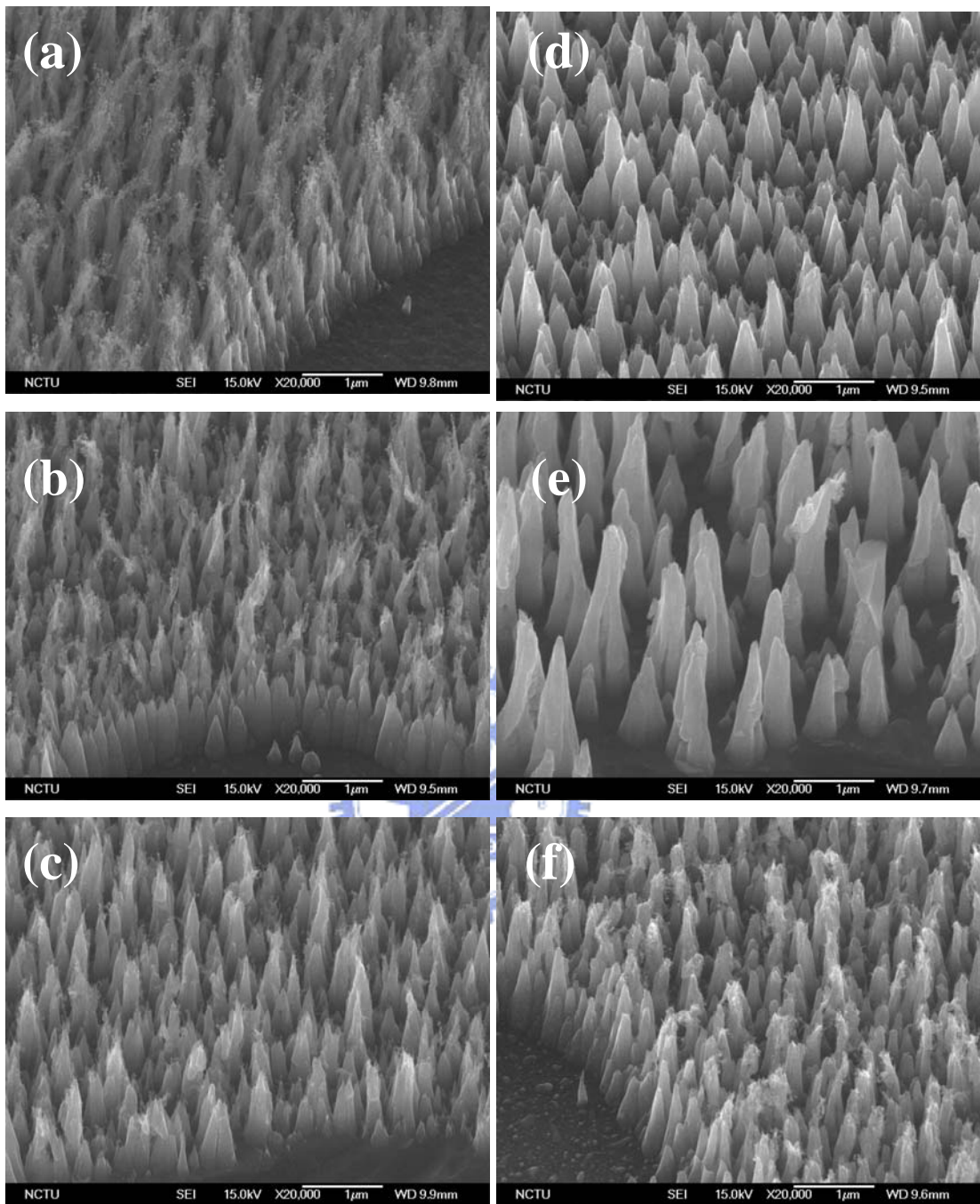


Fig. 4-27 SEM morphologies of the as-deposited Fe-assisted carbon nanocone structures for Specimen C5 after different H-plasma post-treatment times: (a) 1, (b) 3, (c) 5, (d) 7, (e) 10, and (f) 20 min.

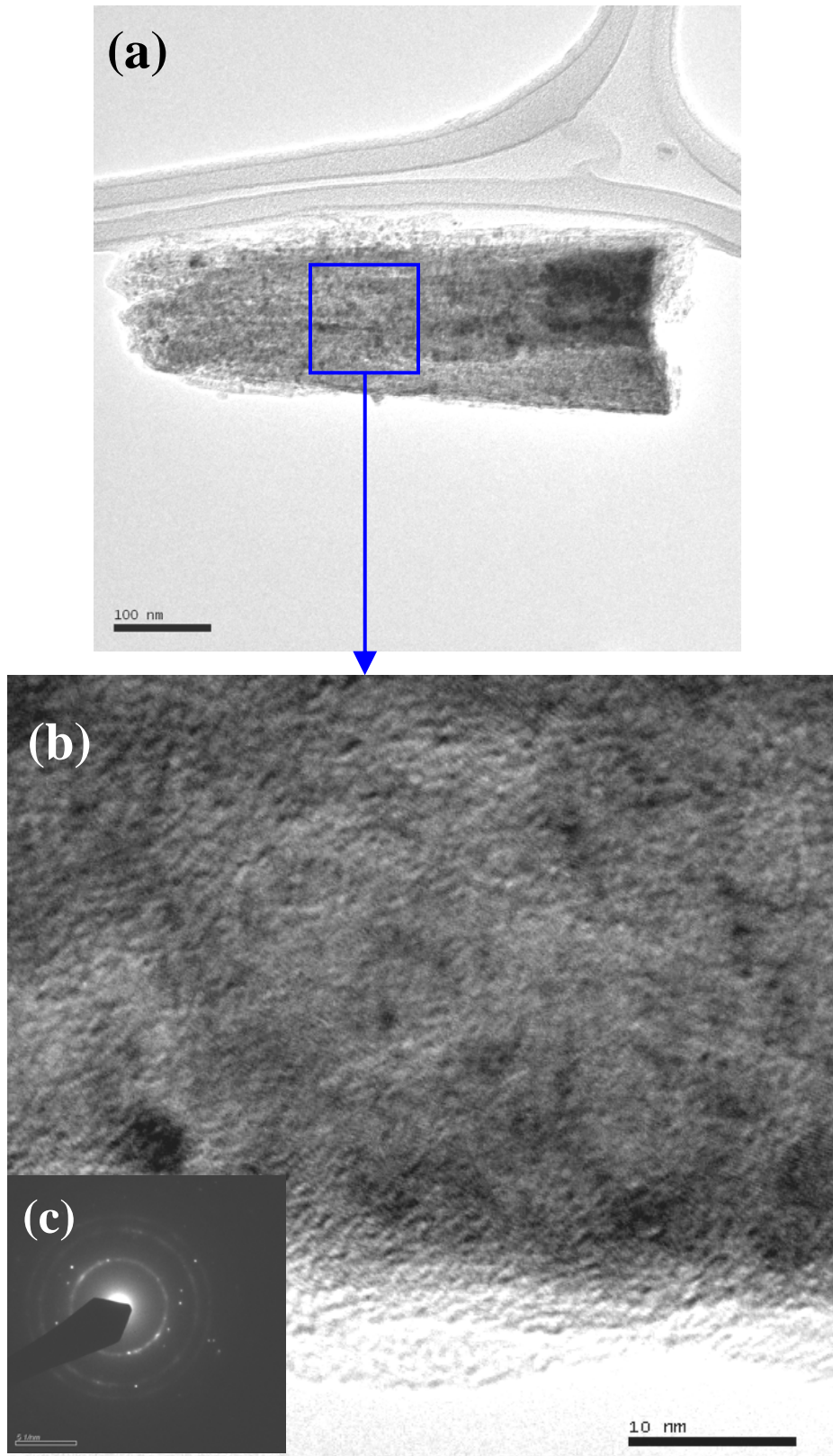


Fig. 4-28 (a) TEM image of the as-deposited Co-assisted carbon nanocone structures for Specimen A5 etched by H-plasma for 10 min., (b) HRTEM lattice image of (a), and (c) ED pattern of (a).

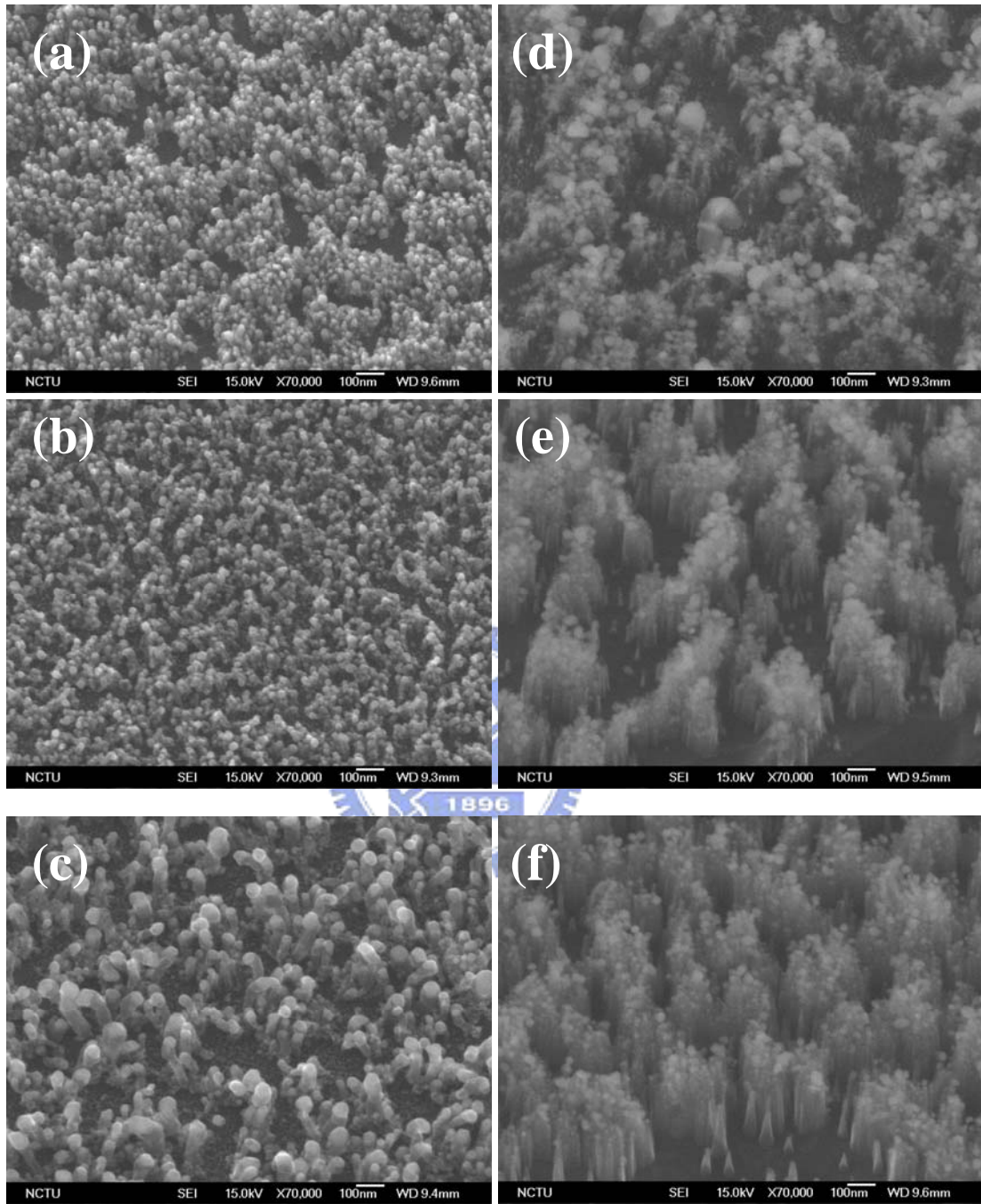


Fig. 4-29 SEM morphologies of the as-deposited Co-assisted CNTs for Specimen I4 after different H-plasma post-treatment times: (a) 1, (b) 3, (c) 5, (d) 7, (e) 10, and (f) 20 min.

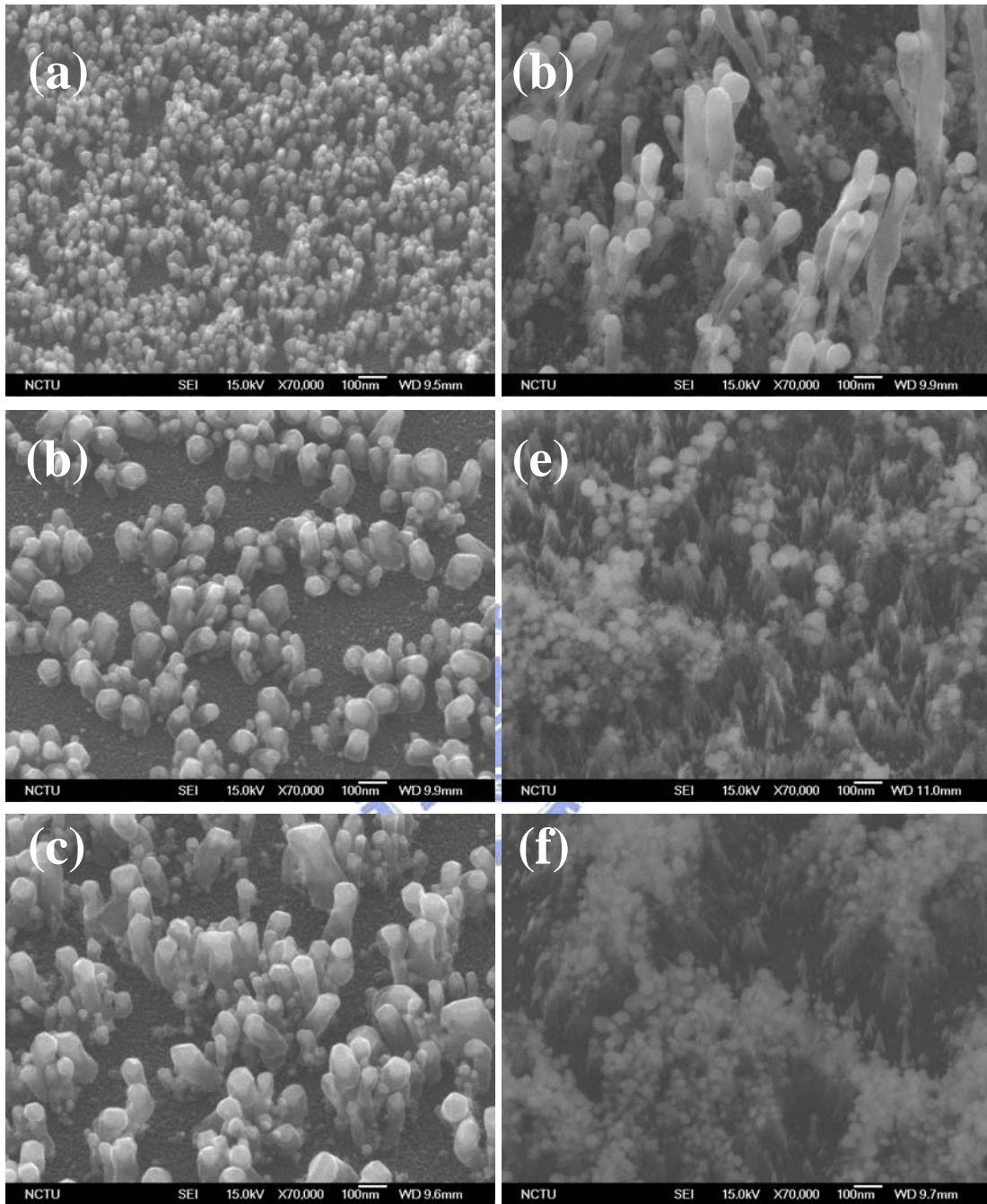


Fig. 4-30 SEM morphologies of the as-deposited Ni-assisted CNTs for Specimen I4 after different H-plasma post-treatment times: (a) 1, (b) 3, (c) 5, (d) 7, (e) 10, and (f) 20 min.

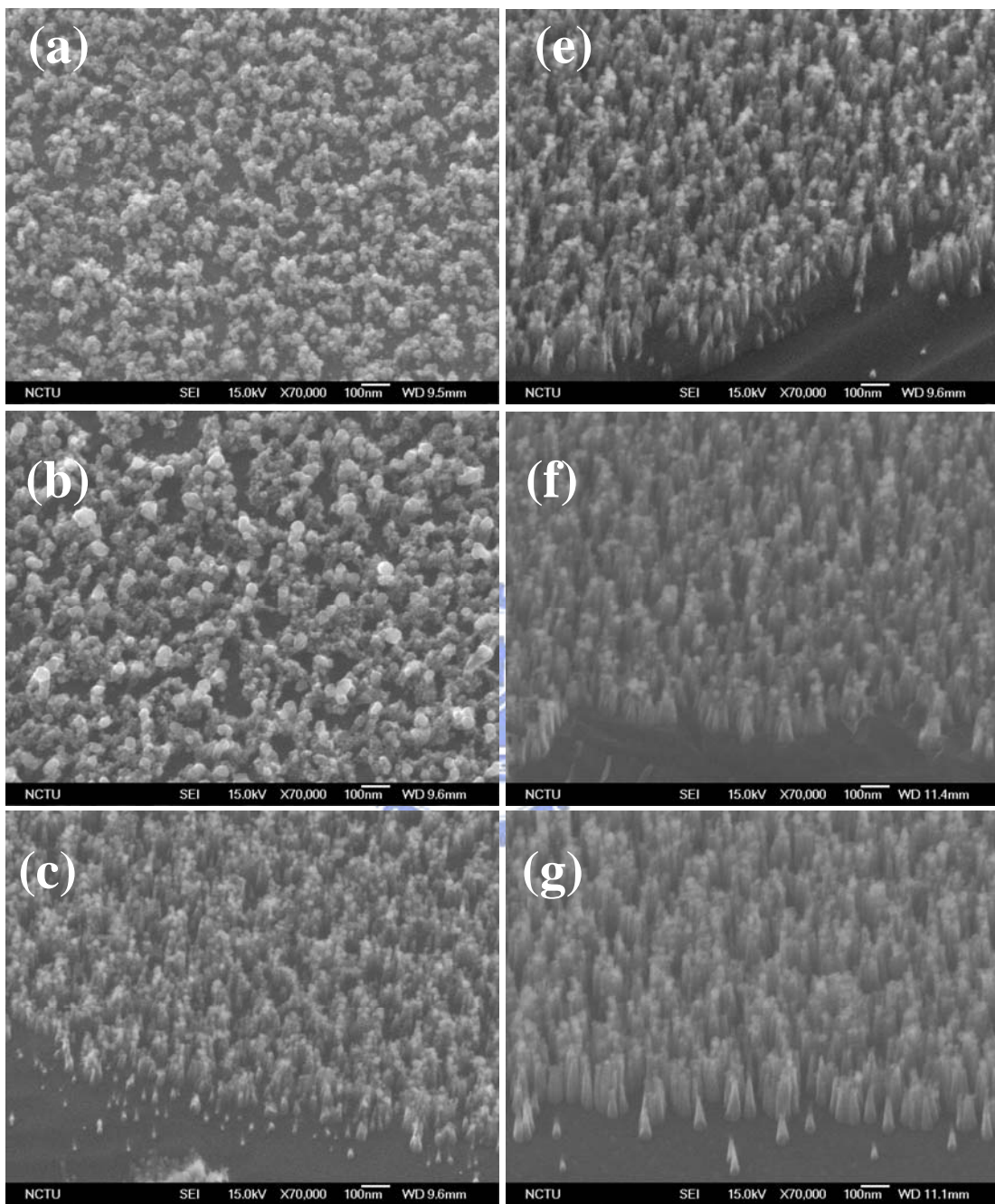


Fig. 4-31 SEM morphologies of the as-deposited Fe-assisted CNTs for Specimen J4 after different H-plasma post-treatment times: (a) 1, (b) 3, (c) 5, (d) 7, (e) 10, and (f) 20 min.