

# 《梵天》

*Brahma*

(2013-14)



by

蔡承哲 David Tsai

## *Instrumentation*

### Woodwinds

- 1 Piccolo
- 1 Flute
- 1 Oboe
- 1 English Horn
- 1 Clarinet in B<sup>b</sup>
- 1 Bass Clarinet
- 1 Bassoon
- 1 Contrabassoon

### Brass

- 4 Horns in F
- 2 Trumpets in B<sup>b</sup>
- 1 Trombone
- 1 Bass Trombone
- 1 Tuba

Timpani x2 (32 in. and 28 in.)

### Percussion\* (4 players)

Pitched : Glockenspiel (with two mallets), Vibraphone, Chimes

Non-pitched : Snare Drum, Bass Drum, Anvil, Medium Gong, Large Gong, Tam-Tam (with brush), Suspended Cymbal (with cello bow), Crash Cymbals, Mark Tree, Metal Wind Chimes, Castanets, Super Balls (x2), Slap Sticks, Whip

Celesta

Harp

and

Strings

\*All the instruments are in written C score except piccolo, contrabassoon, glockenspiel, celesta and contrabass

Duration: ca. 11'00"

# Abbreviations and Symbols

## Strings

MST	molto sul tasto
MSP	molto sul ponticello
PO	position ordinary
stressing tone	pressing much more pressure with bowing to make scratch sounds

## Winds

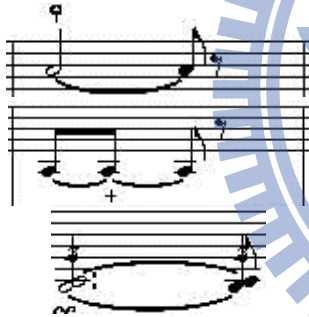
t. tr.	timbre trill by varying fingering
--------	-----------------------------------

## Trumpet

rip	an upward rough bending tone with a large interval including several partials in between
scoop	an upward short pitch bending
shake (lip trill)	pitch changing or tremolo by lip without pistons

## Harp

a la table	playing near the sound board like the guitar sound
paper sound effect	putting a paper between both the lowest strings of harp and plucking the string with the vibration of the paper



Bartok pizzicato on harp

touching the vibrant strings of harp with a screwdriver

plucking both strings very strongly to make a sound by a collision





梵天

8 + 1  
4 + 8

18

Picc.

Fl.

Ob.

E. Hn.

Cl.

Bass. Cl.

Bsn.

C. Bn.

Hn. 1  
3

Hn. 2  
4

Tpt. 1

Tpt. 2

T. Tbn.

B. Tbn.

Tuba

Timp.

Perc. 1

Perc. 2

Perc. 3  
Tam-Tam (with superball randomly)

Perc. 4  
Anvil

Cel.

Hp.

Vln. I

Vln. II

Vla.

Vc.

Cb.

*ppp* *ff* *mp* *f* *sempre e marcato* *mf* *mf* *ff* *ff* *ff* *f*



梵天

Musical score for the piece "梵天" (Vandana). The score is arranged in a standard orchestral format with multiple staves for each instrument. The instruments listed include Piccolo (Picc.), Flute (Fl.), Oboe (Ob.), English Horn (E. Hn.), Clarinet (Cl.), Bass Clarinet (Bass. Cl.), Bassoon (Bsn.), Contrabassoon (C. Bn.), Horn 1 (Hn. 1), Horn 2 (Hn. 2), Trumpet 1 (Tpt. 1), Trumpet 2 (Tpt. 2), Tenor Trombone (T. Tbn.), Baritone Trombone (B. Tbn.), Tuba, Timpani (Timp.), Percussion 1 (Perc. 1), Percussion 2 (Perc. 2), Percussion 3 (Perc. 3), Percussion 4 (Perc. 4), Cello (Ccl.), Harp (Hp.), Violin I (Vln. I), Violin II (Vln. II), Viola (Vla.), Violoncello (Vc.), and Contrabass (Cb.). The score begins at measure 27. The key signature is one flat (B-flat major or D minor), and the time signature is 3/4. The dynamic marking *ff sempre* is used throughout. Performance instructions include "brassy" for the horns, "rip" for the trumpets, "scoop" for the trombones, and "shake" for the tuba. The string section includes markings for "MSP" (Mouthpiece Slurs) and "MST" (Mouthpiece Slurs) for the violins and violas, and "PO" (Pizzicato) for the violas and cellos. A large blue watermark of Tsinghua University is overlaid on the score, featuring the university's name in Chinese and English, the founding year "1896", and a central emblem.



梵天

32

Picc. *ff*

Fl. *ff*

Ob. *ff*

E. Hn. *ff*

Cl. *ff*

Bass. Cl. *ff*

Bsn. *ff*

C. Bn. *ff*

Hn. 1 3 *ff*

Hn. 2 4 *ff*

Tpt. 1 *ff* shake

Tpt. 2 *ff* shake

T. Tbn. *ff*

B. Tbn. *ff*

Tuba *ff*

Timp. *ff*

Perc. 1 *f* Glsp.

Perc. 2 *f*

Perc. 3 *mf* Tam-Tam (with brushes) *f* scrape

Perc. 4 *f* Suspended Cymbal *sfz* Castanets

Cel. *f*

Hp. *mp* *f* *sfz* *ord.* *ord.*

Vln. I *ff* *pp* *mp* *f* *mf* *sfz*

Vln. II *ff* *pp* *mp* *f* *mf* *sfz*

Vla. *ff* *pp* *mp* *f* *mf* *pizz.* *sfz*

Vc. *ff* *pp* *mp* *f* *mf* *pizz.* *sfz*

Cb. *ff* *pp* *mp* *f* *mf* *sfz*

E, F, G, A<sub>2</sub> *su*  
B<sub>2</sub>, C<sub>3</sub>, D<sub>3</sub> *su*

1896

梵天

B

36

Picc. *p*

Fl. *pp mp p p*

Ob. *p*

E. Hn. *p*

Cl. *p*

Bass. Cl. *p mp p*

Bsn. *p*

C. Bn. *p*

Hn. 1 3

Hn. 2 4

Tpt. 1

Tpt. 2

T. Tbn.

B. Tbn.

Tuba

36

Timp.

Perc. 1

Perc. 2 *mp mf*  
Vibraphone

Perc. 3 *p mp mf*  
Large Gong Medium Gong Tam-Tam

Perc. 4 *mf*  
Bass Drum

Cel.

36

Hp. *mp mf f*  
a la table a la table ord. *pp*  
E, F, G, A<sub>2</sub> B<sub>2</sub>, C<sub>2</sub>, D<sub>2</sub>

Vln. I *mp mf p*  
arco

Vln. II *mp mf p*  
arco

Vla. *p mp mf p*  
arco

Vc. *p mp mf*  
arco

Cb. *p mp mf*  
non div. arco

梵天

Musical score for the piece "梵天" (Vandana). The score is arranged in a standard orchestral format with multiple staves for each instrument. The instruments listed on the left are: Picc., Fl., Ob., E. Hn., Cl., Bass. Cl., Bsn., C. Bn., Hn. 1, Hn. 2, Tpt. 1, Tpt. 2, T. Tbn., B. Tbn., Tuba, Timp., Perc. 1, Perc. 2, Perc. 3 (Mark Tree), Perc. 4, Cel., Hp., Vln. I, Vln. II, Vla., Vc., and Cb. The score includes various musical notations such as dynamics (mf, f, ff, p), articulation (accents, slurs), and performance instructions like "pizz." and "arco". A large, semi-transparent blue watermark of a university seal is overlaid on the score, featuring a gear-like border, a central emblem with the letters "ES A", and the year "1896".

梵天

45

Picc. *mp* *p*

Fl. *mp* *p*

Ob. *p* *mf* *p*

E. Hn. *p* *mf*

Cl. *mp* *p*

Bass Cl. *p* *mf* *p*

Bsn. *mp* *f* *p*

C. Bn. *p* *mf*

Hn. 1 3 straight mute *p* *mf* *p* Open

Hn. 2 4

Tpt. 1 cup mute *p* *mf* *pp* Open

Tpt. 2 cup mute *p* *mf* *pp* Open

T. Tbn. straight mute *p* *mf* *p* Open

B. Tbn.

Tuba

Timp. 45

Perc. 1 *mp*

Perc. 2 *mf* *mp*

Perc. 3

Perc. 4 Wind Chimes *mf* Suspended Cymbal *p* *mf* Wind Chimes *mp*

Cel. 45

Hp. *mf* *pp* *mf* *p*

Vln. I *pp* Con sord. *p* misterioso *mf*

Vln. II *pp* Con sord. *p* misterioso *mf*

Vla. *pp* Con sord. *p* misterioso *mf*

Vc. *pp* Con sord. *p* misterioso *mf*

Cb. *pp*

Es, F# A4  
Bb, D4  
E3

梵天

Musical score for the piece "梵天" (Vandana). The score is arranged for a large orchestra and includes the following parts:

- Picc.
- Fl.
- Ob.
- E. Hn.
- Cl.
- Bass Cl.
- Bsn.
- C. Bn.
- Hn. 1 & 3
- Hn. 2 & 4
- Tpt. 1 & 2
- T. Tbn.
- B. Tbn.
- Tuba
- Timp.
- Perc. 1
- Perc. 2
- Perc. 3 (Suspended Cymbal)
- Perc. 4 (Mark Tree)
- Cel.
- Hp.
- Vln. I
- Vln. II
- Vla.
- Vc.
- Cb.

The score includes various musical notations such as dynamics (*p*, *mp*, *f*), articulation (*tr.*), and performance instructions like *p sempre*. A large blue circular watermark with the letters "ES" and the year "1896" is overlaid on the score.

梵天

53

Picc. *mf-f* *pp* *pp<p* *pp*

Fl. *mf-f* *pp* *pp<p* *pp*

Ob. *mp* *mf* *pp* *pp<p* *pp*

E. Hn. *mp* *mf* *pp* *pp<p* *pp*

Cl. *mf-f* *p* *pp* *p* *pp*

Bass. Cl. *f* *mf-f* *pp*

Bsn. *f* *mf-f* *pp*

C. Bn. *f* *mf-f* *pp*

Hn. 1 3 *mp<mf* *f* *pp*

Hn. 2 4 *mp<mf* *f* *pp*

Tpt. 1 *mp<mf* *f* *pp*

Tpt. 2 *mp<mf* *f* *pp*

T. Tbn. *mp<mf* *f* *pp*

B. Tbn. *mp<mf* *f* *pp*

Tuba *mp<mf* *f* *pp*

Timp. *mp<mf* *f* *pp*

Perc. 1 *mp<mf* *f* *pp*

Perc. 2 *Vib.* *mf* *ff* *pp*

Perc. 3 *Tam-tam* *f* *pp*

Perc. 4 *Glockenspiel* *p* *f* *pp*

Cel. *mp<mf* *f* *pp*

Hp. *mf* *pp*

Vln. I *Senza sord.* *mf-f* *ff* *pp*

Vln. II *Senza sord.* *mf-f* *ff* *pp*

Vla. *Senza sord.* *mf-f* *ff* *pp* *non div.* *pp*

Vc. *Senza sord.* *mf-f* *ff* *pp*

Cb. *mf-f* *ff* *pp*



梵天

58

Picc. Fl. Ob. E. Hn. Cl. Bass. Cl. Bsn. C. Bn.

Hn. 1 3 Hn. 2 4 Tpt. 1 Tpt. 2 T. Tbn. B. Tbn. Tuba

58 Timp. Perc. 1 Perc. 2 Perc. 3 Perc. 4

58 Cel. Hp.

58 Vln. I Vln. II Vla. Vc. Cb.

Harmon mute, Open, Harmon mutes, Open

*p*, *mp*, *pp*, *f*, *mf*, *p*, *ppp*, *cresc. poco a poco*, *non div.*







梵天

78  $\frac{4}{4}$   $\frac{1}{4}$   $\frac{6}{4}$   $\frac{7}{4}$   $\frac{4}{4}$   $\frac{32}{4}$

Picc.  $\frac{4}{4}$   $\frac{1}{4}$   $\frac{6}{4}$   $\frac{7}{4}$   $\frac{4}{4}$   $\frac{32}{4}$

Fl.  $\frac{4}{4}$   $\frac{1}{4}$   $\frac{6}{4}$   $\frac{7}{4}$   $\frac{4}{4}$   $\frac{32}{4}$

Ob.  $\frac{4}{4}$   $\frac{1}{4}$   $\frac{6}{4}$   $\frac{7}{4}$   $\frac{4}{4}$   $\frac{32}{4}$

E. Hn.  $\frac{4}{4}$   $\frac{1}{4}$   $\frac{6}{4}$   $\frac{7}{4}$   $\frac{4}{4}$   $\frac{32}{4}$

Cl.  $\frac{4}{4}$   $\frac{1}{4}$   $\frac{6}{4}$   $\frac{7}{4}$   $\frac{4}{4}$   $\frac{32}{4}$

Bass Cl.  $\frac{4}{4}$   $\frac{1}{4}$   $\frac{6}{4}$   $\frac{7}{4}$   $\frac{4}{4}$   $\frac{32}{4}$

Bsn.  $\frac{4}{4}$   $\frac{1}{4}$   $\frac{6}{4}$   $\frac{7}{4}$   $\frac{4}{4}$   $\frac{32}{4}$

C. Bn.  $\frac{4}{4}$   $\frac{1}{4}$   $\frac{6}{4}$   $\frac{7}{4}$   $\frac{4}{4}$   $\frac{32}{4}$

Hn. 1  $\frac{4}{4}$   $\frac{1}{4}$   $\frac{6}{4}$   $\frac{7}{4}$   $\frac{4}{4}$   $\frac{32}{4}$

Hn. 2  $\frac{4}{4}$   $\frac{1}{4}$   $\frac{6}{4}$   $\frac{7}{4}$   $\frac{4}{4}$   $\frac{32}{4}$

Tpt. 1  $\frac{4}{4}$   $\frac{1}{4}$   $\frac{6}{4}$   $\frac{7}{4}$   $\frac{4}{4}$   $\frac{32}{4}$

Tpt. 2  $\frac{4}{4}$   $\frac{1}{4}$   $\frac{6}{4}$   $\frac{7}{4}$   $\frac{4}{4}$   $\frac{32}{4}$

T. Tbn.  $\frac{4}{4}$   $\frac{1}{4}$   $\frac{6}{4}$   $\frac{7}{4}$   $\frac{4}{4}$   $\frac{32}{4}$

B. Tbn.  $\frac{4}{4}$   $\frac{1}{4}$   $\frac{6}{4}$   $\frac{7}{4}$   $\frac{4}{4}$   $\frac{32}{4}$

Tuba  $\frac{4}{4}$   $\frac{1}{4}$   $\frac{6}{4}$   $\frac{7}{4}$   $\frac{4}{4}$   $\frac{32}{4}$

Timp.  $\frac{4}{4}$   $\frac{1}{4}$   $\frac{6}{4}$   $\frac{7}{4}$   $\frac{4}{4}$   $\frac{32}{4}$

Perc. 1  $\frac{4}{4}$   $\frac{1}{4}$   $\frac{6}{4}$   $\frac{7}{4}$   $\frac{4}{4}$   $\frac{32}{4}$

Perc. 2  $\frac{4}{4}$   $\frac{1}{4}$   $\frac{6}{4}$   $\frac{7}{4}$   $\frac{4}{4}$   $\frac{32}{4}$

Perc. 3  $\frac{4}{4}$   $\frac{1}{4}$   $\frac{6}{4}$   $\frac{7}{4}$   $\frac{4}{4}$   $\frac{32}{4}$

Perc. 4  $\frac{4}{4}$   $\frac{1}{4}$   $\frac{6}{4}$   $\frac{7}{4}$   $\frac{4}{4}$   $\frac{32}{4}$

Cel.  $\frac{4}{4}$   $\frac{1}{4}$   $\frac{6}{4}$   $\frac{7}{4}$   $\frac{4}{4}$   $\frac{32}{4}$

Hp.  $\frac{4}{4}$   $\frac{1}{4}$   $\frac{6}{4}$   $\frac{7}{4}$   $\frac{4}{4}$   $\frac{32}{4}$

Vln. I  $\frac{4}{4}$   $\frac{1}{4}$   $\frac{6}{4}$   $\frac{7}{4}$   $\frac{4}{4}$   $\frac{32}{4}$

Vln. II  $\frac{4}{4}$   $\frac{1}{4}$   $\frac{6}{4}$   $\frac{7}{4}$   $\frac{4}{4}$   $\frac{32}{4}$

Vla.  $\frac{4}{4}$   $\frac{1}{4}$   $\frac{6}{4}$   $\frac{7}{4}$   $\frac{4}{4}$   $\frac{32}{4}$

Vc.  $\frac{4}{4}$   $\frac{1}{4}$   $\frac{6}{4}$   $\frac{7}{4}$   $\frac{4}{4}$   $\frac{32}{4}$

Cb.  $\frac{4}{4}$   $\frac{1}{4}$   $\frac{6}{4}$   $\frac{7}{4}$   $\frac{4}{4}$   $\frac{32}{4}$

Crash Cymbals  $\frac{4}{4}$   $\frac{1}{4}$   $\frac{6}{4}$   $\frac{7}{4}$   $\frac{4}{4}$   $\frac{32}{4}$

Tam-Tam  $\frac{4}{4}$   $\frac{1}{4}$   $\frac{6}{4}$   $\frac{7}{4}$   $\frac{4}{4}$   $\frac{32}{4}$

Bass Drum  $\frac{4}{4}$   $\frac{1}{4}$   $\frac{6}{4}$   $\frac{7}{4}$   $\frac{4}{4}$   $\frac{32}{4}$

1896





梵天

Musical score for '梵天' (Vandana). The score is arranged in a standard orchestral format with multiple staves. The instruments listed on the left include Piccolo (Picc.), Flute (Fl.), Oboe (Ob.), English Horn (E. Hn.), Clarinet (Cl.), Bass Clarinet (Bass. Cl.), Bassoon (Bsn.), Contrabassoon (C. Bn.), Horn 1 (Hn. 1), Horn 2 (Hn. 2), Trumpet 1 (Tpt. 1), Trumpet 2 (Tpt. 2), Tenor Trombone (T. Tbn.), Bass Trombone (B. Tbn.), Tuba, Timpani (Timp.), Percussion 1 (Perc. 1), Percussion 2 (Perc. 2), Percussion 3 (Perc. 3), Percussion 4 (Perc. 4), Cello (Cel.), Harp (Hp.), Violin I (Vln. I), Violin II (Vln. II), Viola (Vla.), Violoncello (Vc.), and Contrabass (Cb.). The score includes various musical notations such as dynamics (e.g., *mp*, *mf*, *p*, *pp*, *ppp*), articulation (e.g., *tr.*, *bisbigl.*), and performance instructions (e.g., *MST*, *PO*, *MSP*, *MSP 5*, *MSP IV*, *MSP III*, *MSP IV*, *MSP III*, *MSP IV*, *MSP III*, *MSP IV*, *MSP III*). A large blue watermark of Tsinghua University is overlaid on the score, featuring the university's name in Chinese and English, the year 1896, and a central emblem.

梵天

Musical score for the piece "梵天" (Vandana). The score is arranged in a standard orchestral format with multiple staves for each instrument. The instruments listed on the left include Piccolo (Picc.), Flute (Fl.), Oboe (Ob.), English Horn (E. Hn.), Clarinet (Cl.), Bass Clarinet (Bass. Cl.), Bassoon (Bsn.), Contrabassoon (C. Bn.), Horn 1 (Hn. 1), Horn 2 (Hn. 2), Trumpet 1 (Tpt. 1), Trumpet 2 (Tpt. 2), Trombone (T. Tbn.), Bass Trombone (B. Tbn.), Tuba, Timpani (Timp.), Percussion 1 (Perc. 1), Percussion 2 (Perc. 2), Percussion 3 (Perc. 3), Percussion 4 (Perc. 4), Cello (Cel.), Harp (Hp.), Violin I (Vln. I), Violin II (Vln. II), Viola (Vla.), Violoncello (Vc.), and Contrabass (Cb.). The score is marked with a rehearsal cue at measure 100. Dynamics include *pp*, *p*, *mf*, and *mp*. Performance instructions such as "L. tr." (left trill) and "MST" (Mandolin/Steel Drum) are present. A large blue watermark of Tsinghua University is overlaid on the score.

梵天

104

Picc. *mf* *mp* *p legato* *mp*

Fl. *mp* *mf* *mp* *p legato* *mp*

Ob. *p* *mf* *p* *p legato* *mp*

E. Hn. *p* *mp*

Cl. *p legato*

Bass Cl. *p*

Bsn. *p* *mf* *p* *p*

C. Bn. *p* *mf* *p*

Hn. 1 3

Hn. 2 4

Tpt. 1 *p*

Tpt. 2 *p*

T. Tbn. *p*

B. Tbn. *p*

Tuba *p*

Timp. *p*

Perc. 1 *p*

Perc. 2 *p*

Perc. 3

Perc. 4

Cel. *p* *cresc. poco a poco*

Hp. *p* *mp*

Vln. I *pp* *pizz.* *p* *cresc. poco a poco*

Vln. II *mf* *pp* *pizz.* *p* *cresc. poco a poco*

Vla. *mf* *p* *mf* *p*

Vc. *mf* *p* *mf* *p*

Cb. *mf* *p* *divisi* *mp*





梵天

Musical score for the piece "梵天" (Vandana). The score is arranged for a large orchestra and includes the following instruments and parts:

- Picc. (Piccolo)
- Fl. (Flute)
- Ob. (Oboe)
- E. Hn. (English Horn)
- Cl. (Clarinet)
- Bass. Cl. (Bass Clarinet)
- Bsn. (Bassoon)
- C. Bn. (Contrabassoon)
- Hn. 1 3 (Horn 1)
- Hn. 2 4 (Horn 2)
- Tpt. 1 (Trumpet 1)
- Tpt. 2 (Trumpet 2)
- T. Tbn. (Tenor Trombone)
- B. Tbn. (Baritone Trombone)
- Tuba
- Timp. (Timpani)
- Perc. 1 (Percussion 1)
- Perc. 2 (Percussion 2)
- Perc. 3 (Percussion 3)
- Perc. 4 (Percussion 4)
- Cel. (Cello)
- Hp. (Harp)
- Vln. I (Violin I)
- Vln. II (Violin II)
- Vla. (Viola)
- Vc. (Violoncello)
- Cb. (Contrabasso)

The score is marked with a large blue watermark of Tsinghua University, featuring the university's name in Chinese and English, the founding year 1911, and the acronym THS.

梵天

This page contains a musical score for the piece "梵天" (Vandana). The score is arranged in a standard orchestral format with multiple staves for different instruments. The instruments listed on the left side of the page are: Piccolo (Picc.), Flute (Fl.), Oboe (Ob.), English Horn (E. Hn.), Clarinet (Cl.), Bass Clarinet (Bass. Cl.), Bassoon (Bsn.), Contrabassoon (C. Bn.), Horn 1 (Hn. 1), Horn 2 (Hn. 2), Trumpet 1 (Tpt. 1), Trumpet 2 (Tpt. 2), Tenor Trombone (T. Tbn.), Bass Trombone (B. Tbn.), Tuba, Timpani (Timp.), Percussion 1 (Perc. 1), Percussion 2 (Perc. 2), Percussion 3 (Perc. 3), Percussion 4 (Perc. 4), Cello (Cel.), Harp (Hp.), Violin I (Vln. I), Violin II (Vln. II), Viola (Vla.), Violoncello (Vc.), and Contrabass (Cb.). The score begins at measure 114. The key signature has two flats (B-flat and E-flat), and the time signature is 3/4. The music features complex rhythmic patterns, including many triplets and quintuplets. Dynamic markings such as *mf* (mezzo-forte), *mp* (mezzo-piano), *p* (piano), and *pp* (pianissimo) are used throughout. Performance instructions like "unison" and "pizz." (pizzicato) are also present. A large, semi-transparent blue watermark of Tsinghua University is overlaid on the center of the page.



梵天

120

Picc. Fl. Ob. E. Hn. Cl. Bass. Cl. Bsn. C. Bn.

*p* legato *cresc. poco a poco*

120

Hn. 1 Hn. 2 Tpt. 1 Tpt. 2 T. Tbn. B. Tbn. Tuba

*mp* *cresc. poco a poco*

120

Timp. Perc. 1 Perc. 2 Perc. 3 Perc. 4

120

Cel. Hp. Vln. I Vln. II Vla. Vc. Cb.

6 5 3

# 梵天

123

Picc. *mf* *ff*

Fl. *mf* *ff*

Ob. *mf* *ff*

E. Hn. *mp* *cresc. poco a poco* *f* *dim. poco a poco*

Cl. *mp* *cresc. poco a poco* *f* *dim. poco a poco*

Bass. Cl. *mp* *cresc. poco a poco* *f* *dim. poco a poco*

Bsn. *mp* *cresc. poco a poco* *f* *dim. poco a poco*

C. Bn. *mp* *cresc. poco a poco* *f* *dim. poco a poco*

Hn. 1 *pp*

Hn. 2 *mf* *dim. poco a poco* *p* *pp*

Tpt. 1 *pp*

Tpt. 2 *mf* *dim. poco a poco* *p* *pp*

T. Tbn. *mf* *dim. poco a poco* *p*

B. Tbn. *mf* *dim. poco a poco* *p*

Tuba *mf* *dim. poco a poco* *p*

Timp. *pp*

Perc. 1 *pp*

Perc. 2 *pp*

Perc. 3 *pp*

Perc. 4 *pp*

Cel. *pp*

Hp. *pp*

Vln. I *MSP arco* *p* *legatissimo as much as possible without same bowing\** *cresc. poco a poco* *mp*

Vln. II *MSP arco* *p* *legatissimo as much as possible without same bowing\** *cresc. poco a poco* *mp*

Vla. *MSP arco* *p* *legatissimo as much as possible without same bowing\** *cresc. poco a poco* *mp*

Vc. *MSP arco* *p* *legatissimo as much as possible without same bowing\** *cresc. poco a poco* *mp*

Cb. *MSP unison* *p* *legatissimo as much as possible without same bowing\** *cresc. poco a poco* *mp*

\* changing the bow independently

# 梵天

126

Picc. \_\_\_\_\_

Fl. \_\_\_\_\_

Ob. \_\_\_\_\_

E. Hn. \_\_\_\_\_

Cl. \_\_\_\_\_

Bass. Cl. \_\_\_\_\_

Bsn. \_\_\_\_\_

C. Bn. \_\_\_\_\_

Hn. 1  
3

Hn. 2  
4

Tpt. 1

Tpt. 2

T. Tbn.

B. Tbn.

Tuba

126

Timp. \_\_\_\_\_

Perc. 1

Perc. 2

Perc. 3

Perc. 4

Cel. \_\_\_\_\_

Hp. \_\_\_\_\_

Vln. I

Vln. II

Vla.

Vc.

Cb.

梵天

130

Picc. *f* *pp*

Fl. *f* *pp*

Ob.

E. Hn. *p*

Cl. *pp* *mp* *f* *p*

Bass. Cl. *mp* *f* *p*

Bsn. *p*

C. Bn. *f* *p*

Hn. 1 3

Hn. 2 4

Tpt. 1

Tpt. 2

T. Tbn.

B. Tbn.

Tuba

Timp. 130

Perc. 1 *p*

Perc. 2

Perc. 3

Perc. 4

Cel. *mf* *dim. poco a poco* *p*

Hp. *mf* *dim. poco a poco* *dim. poco a poco* *p*

Vln. I *ppp* *p* *mf* *ppp*

Vln. II *ppp* *p* *mf* *ppp*

Vla. *ppp* *p* *mf* *pp*

Vc. *p* *mf* *pp*

Cb. *mf* *p*





梵天

146

Picc.

Fl.

Ob.

E. Hn.

Cl.

Bass. Cl.

Bsn.

C. Bn.

Hn. 1  
3

Hn. 2  
4

Tpt. 1

Tpt. 2

T. Tbn.

B. Tbn.

Tuba

Timp.

Perc. 1

Perc. 2  
Chimes

Perc. 3  
Tam-Tam

Perc. 4

Cel.

Hp.

Vln. I

Vln. II

Via.

Vc.

Cb.

1896

pizz.

ff

MSP

MST

arco

ff