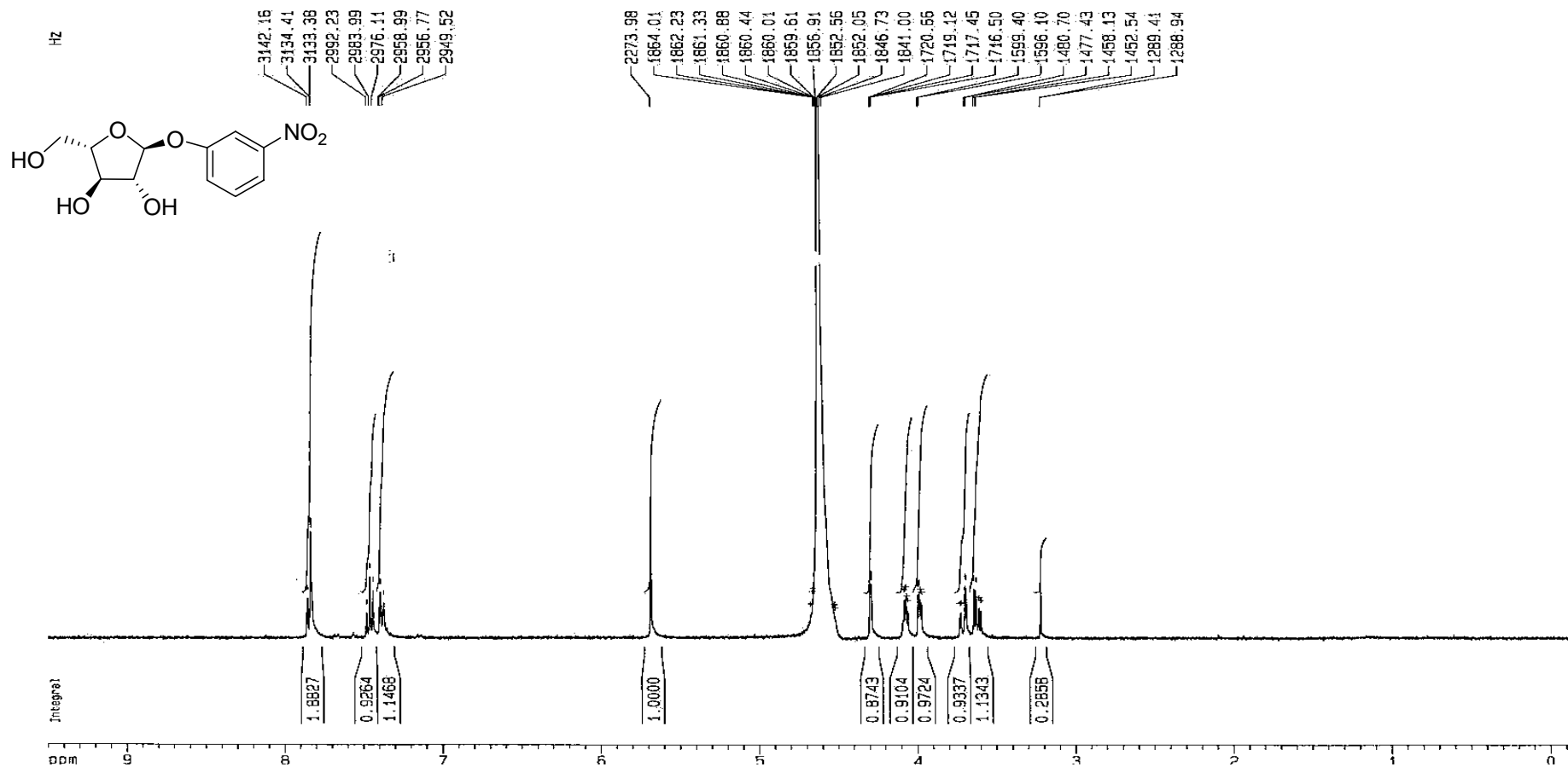
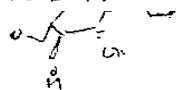
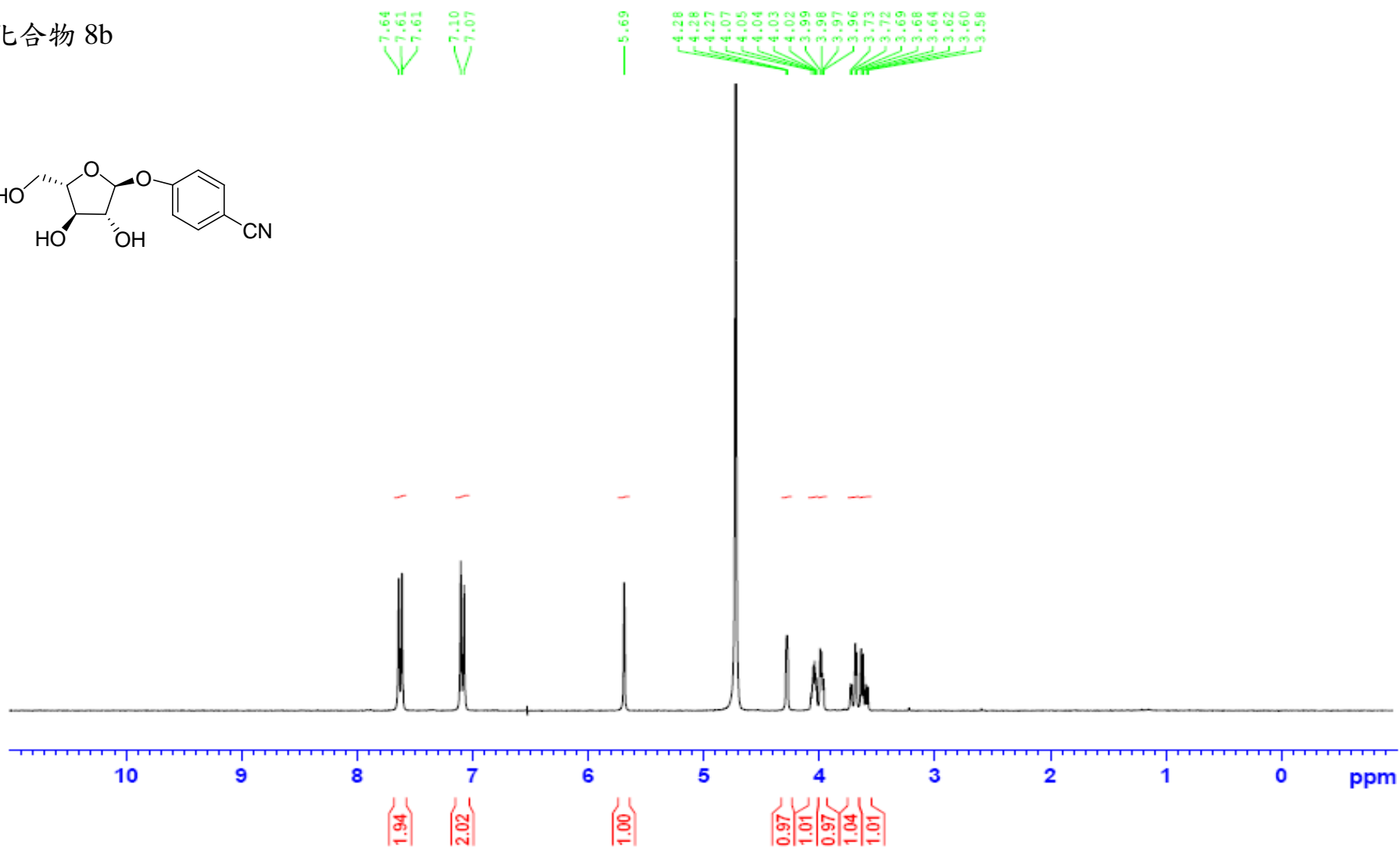
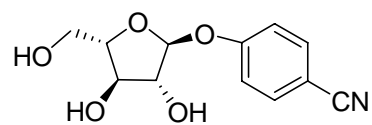


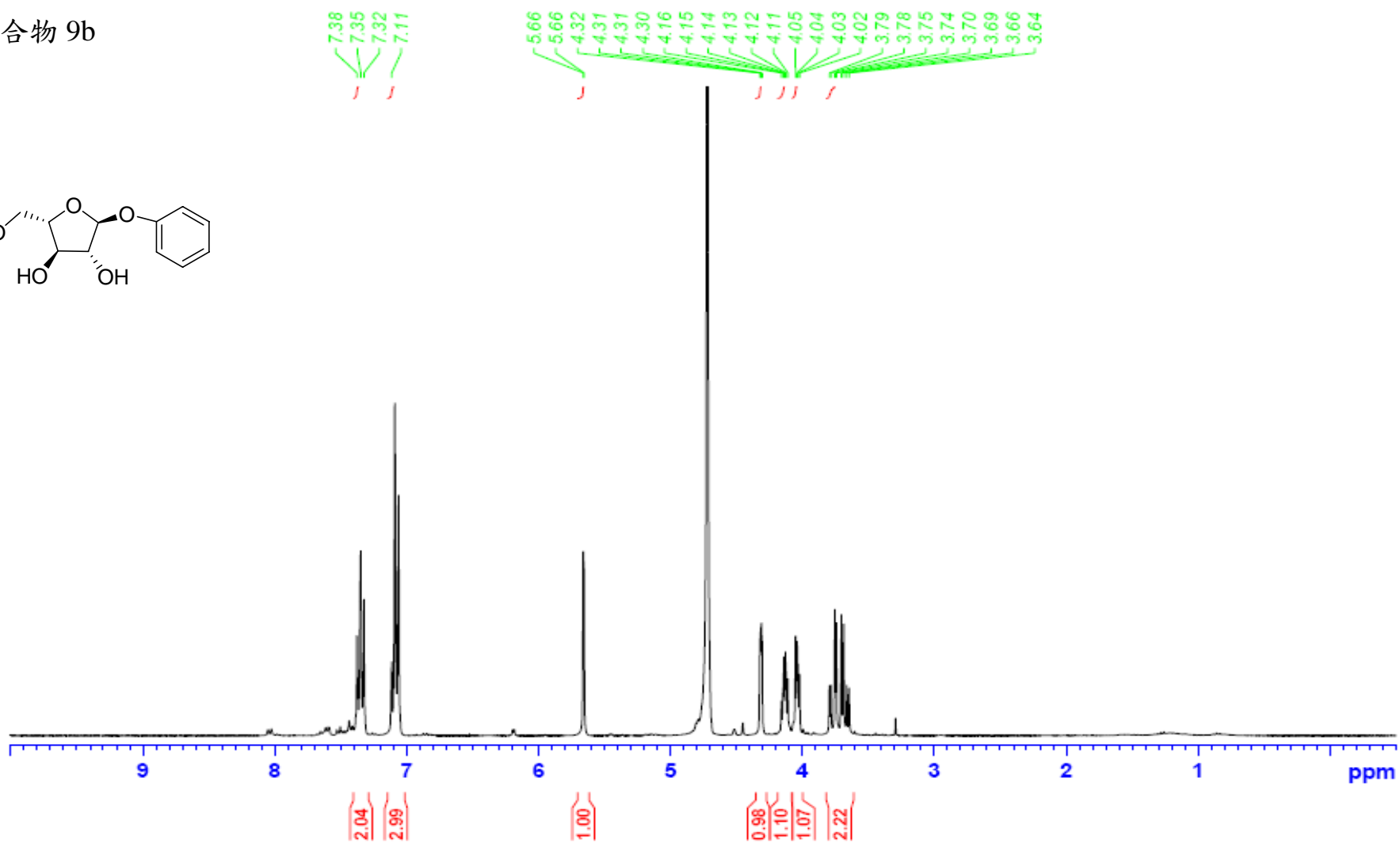
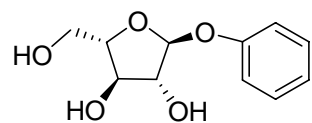
化合物 7b



化合物 8b

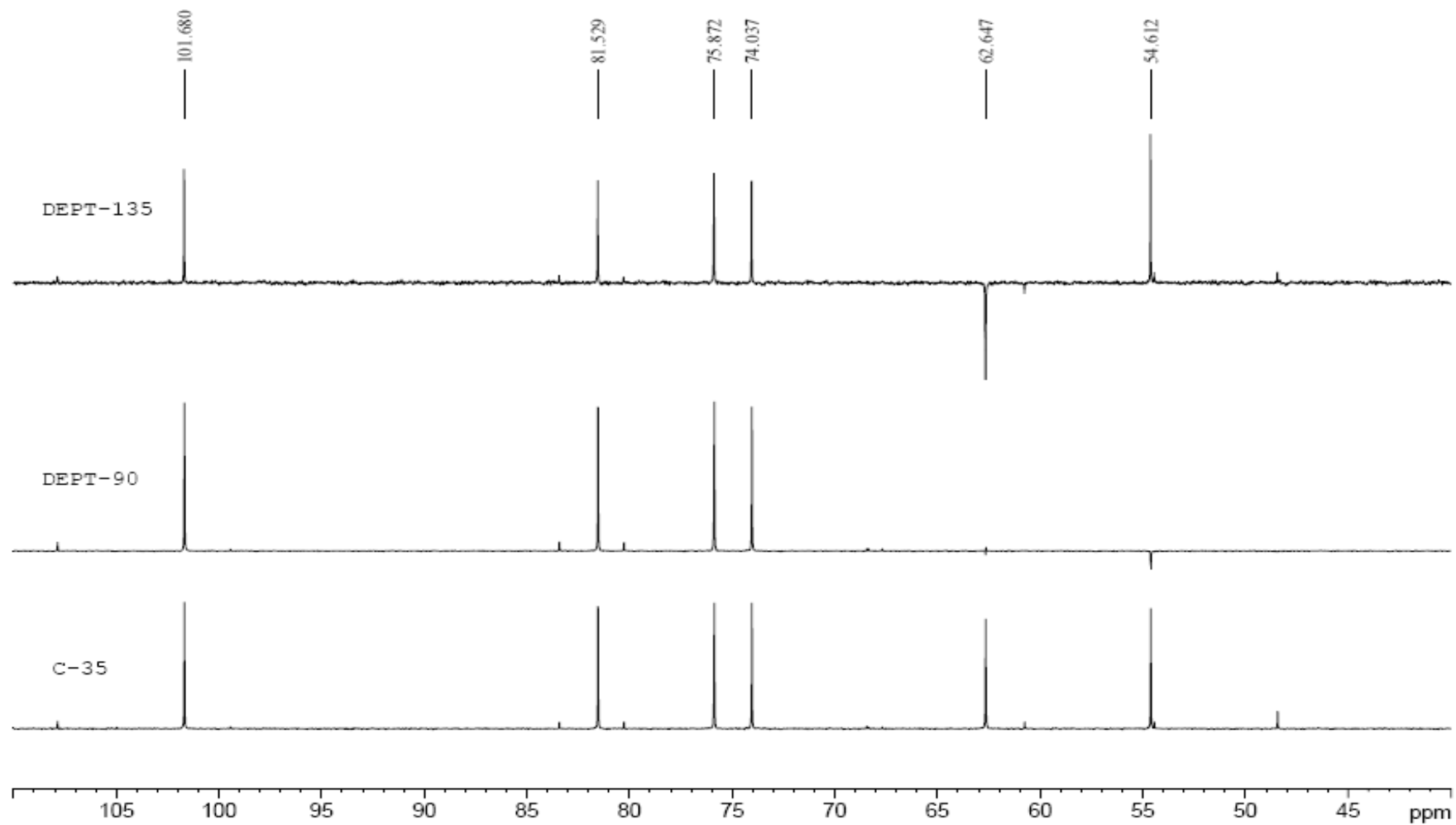


化合物 9b

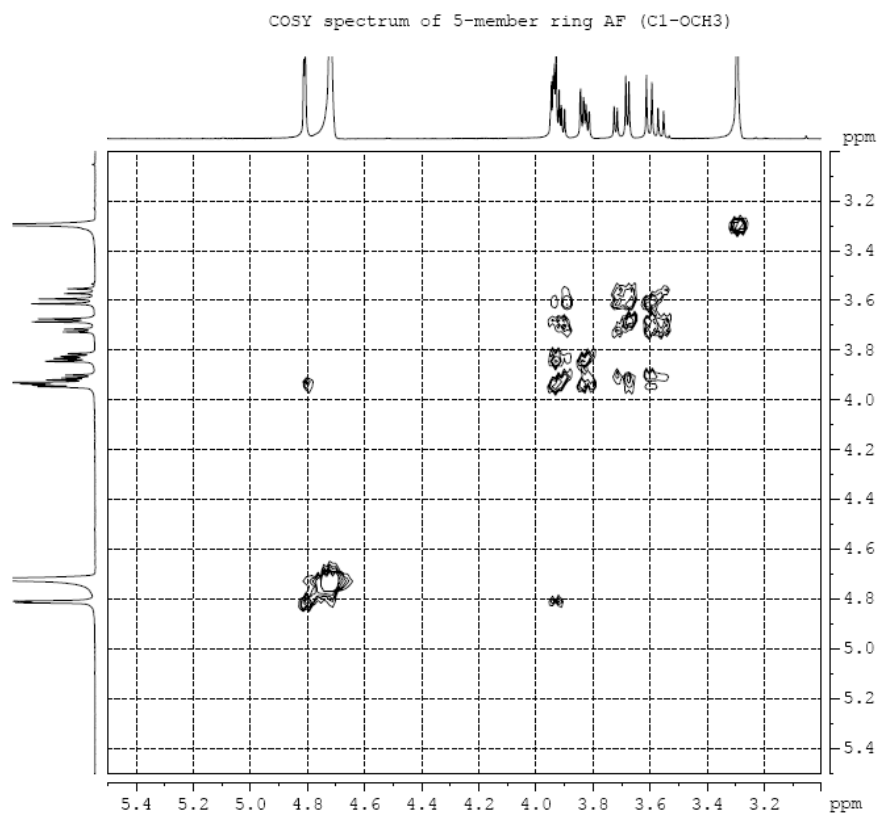


化合物 1a C¹³ & DEPT

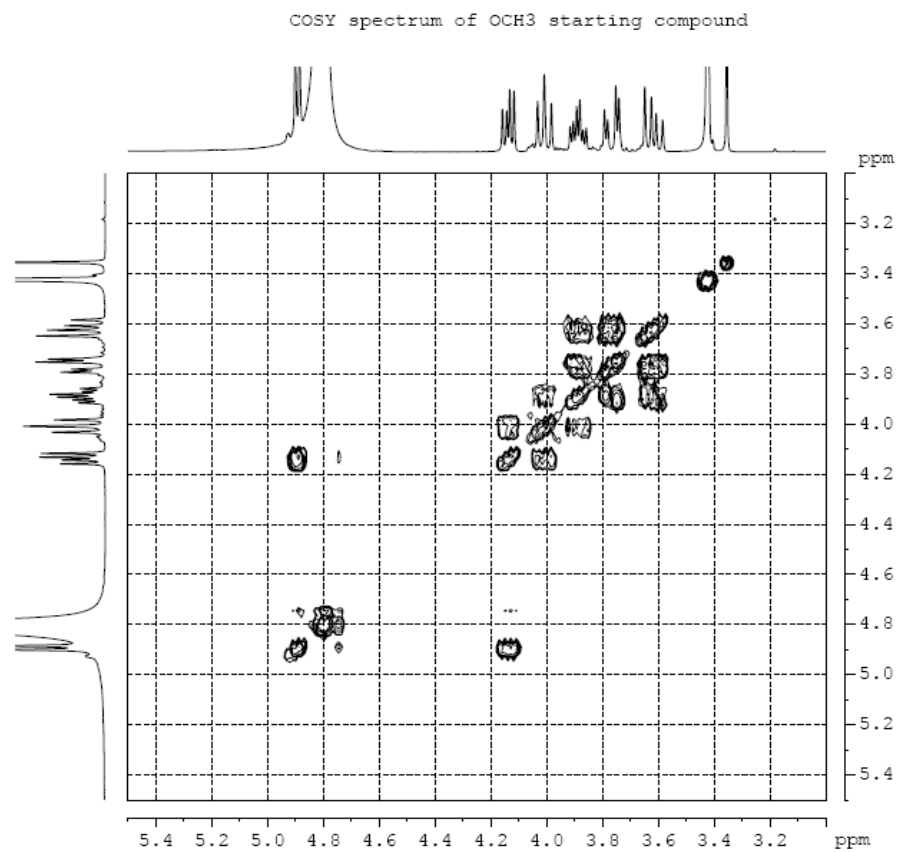
C13&DEPT OCH3 starting compound



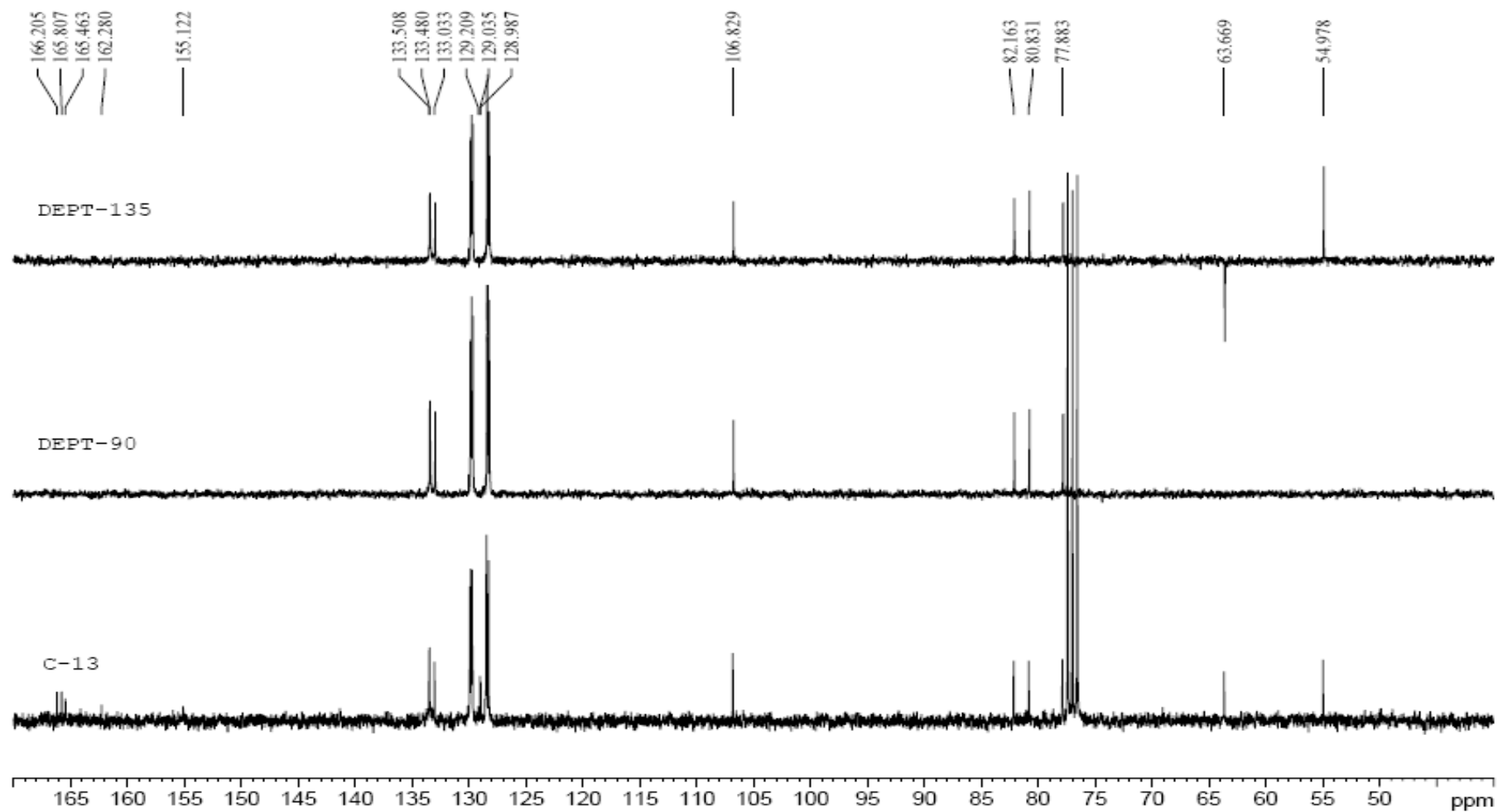
化合物 1a H-H cosy



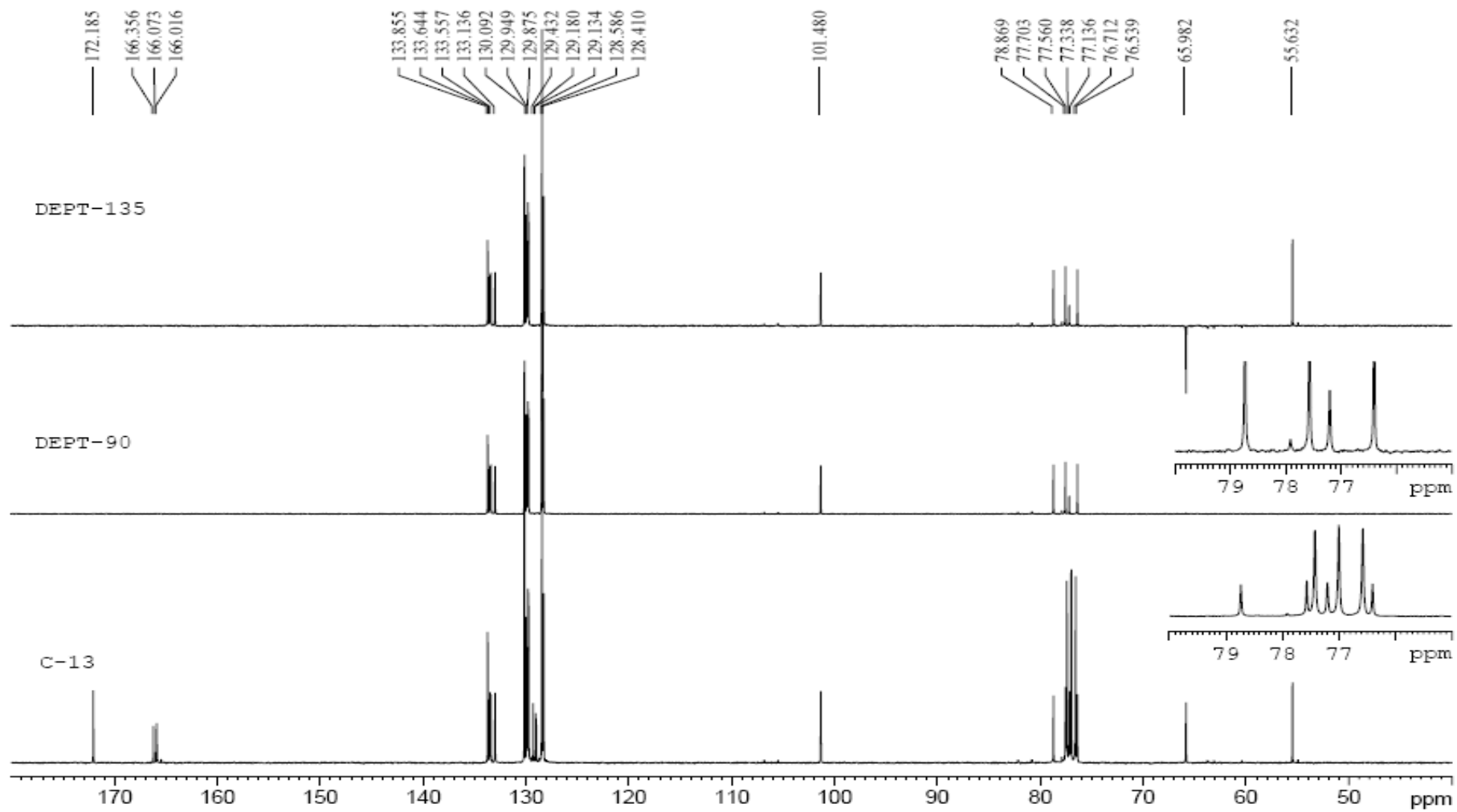
化合物 1b H-H cosy



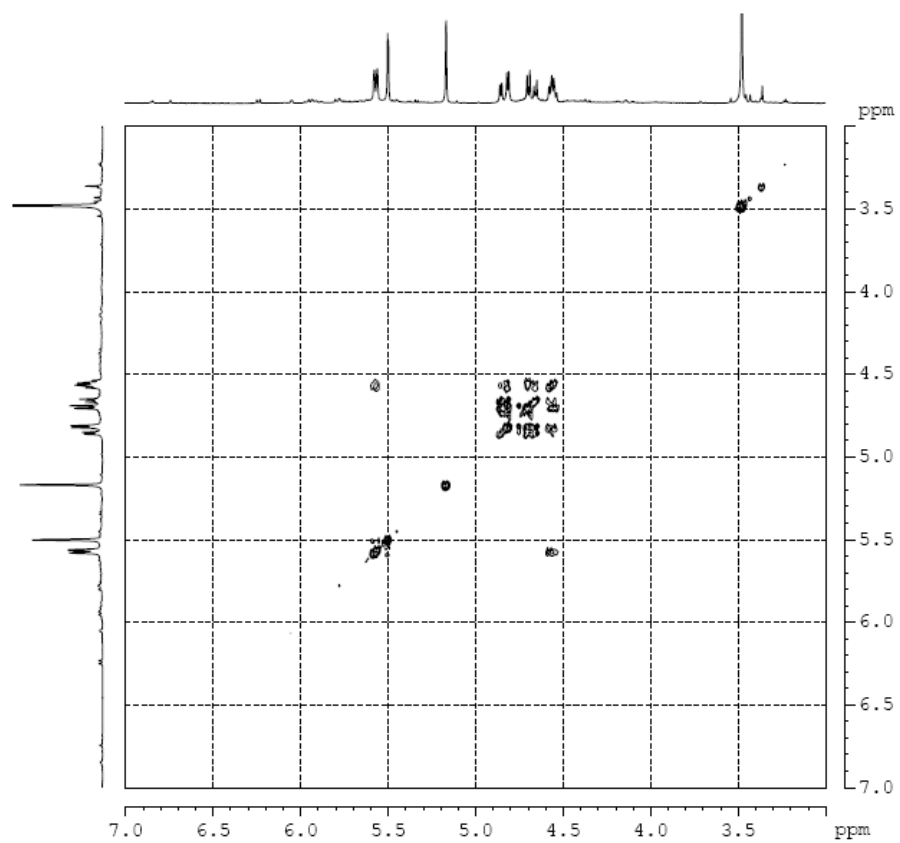
化合物 2a C¹³ & DEPT



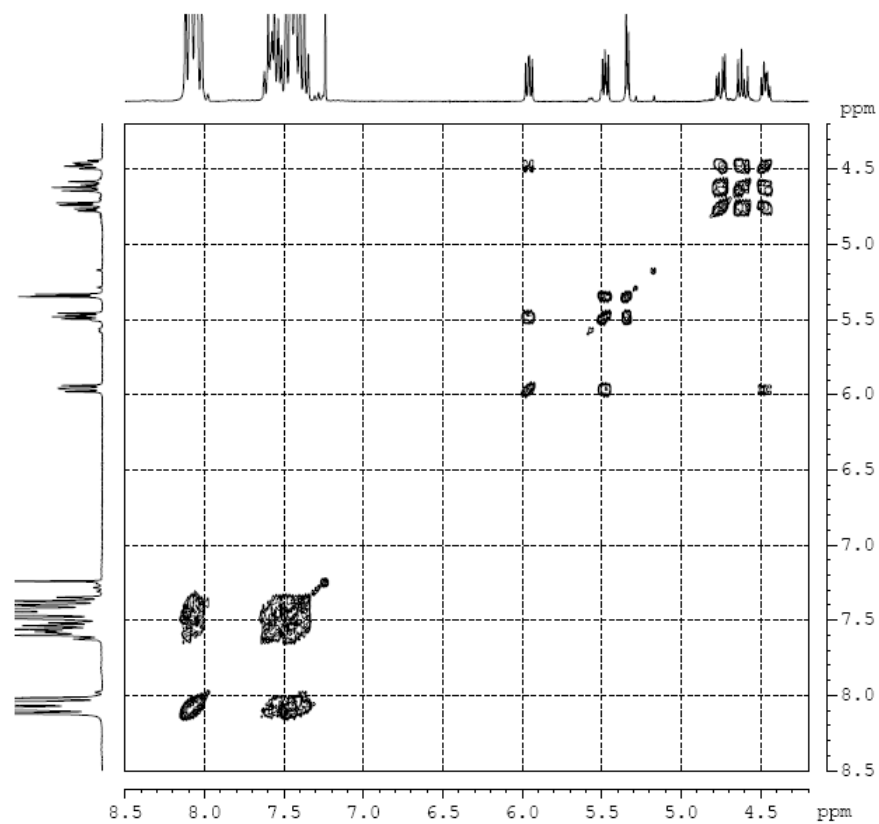
化合物 2b C¹³ & DEPT



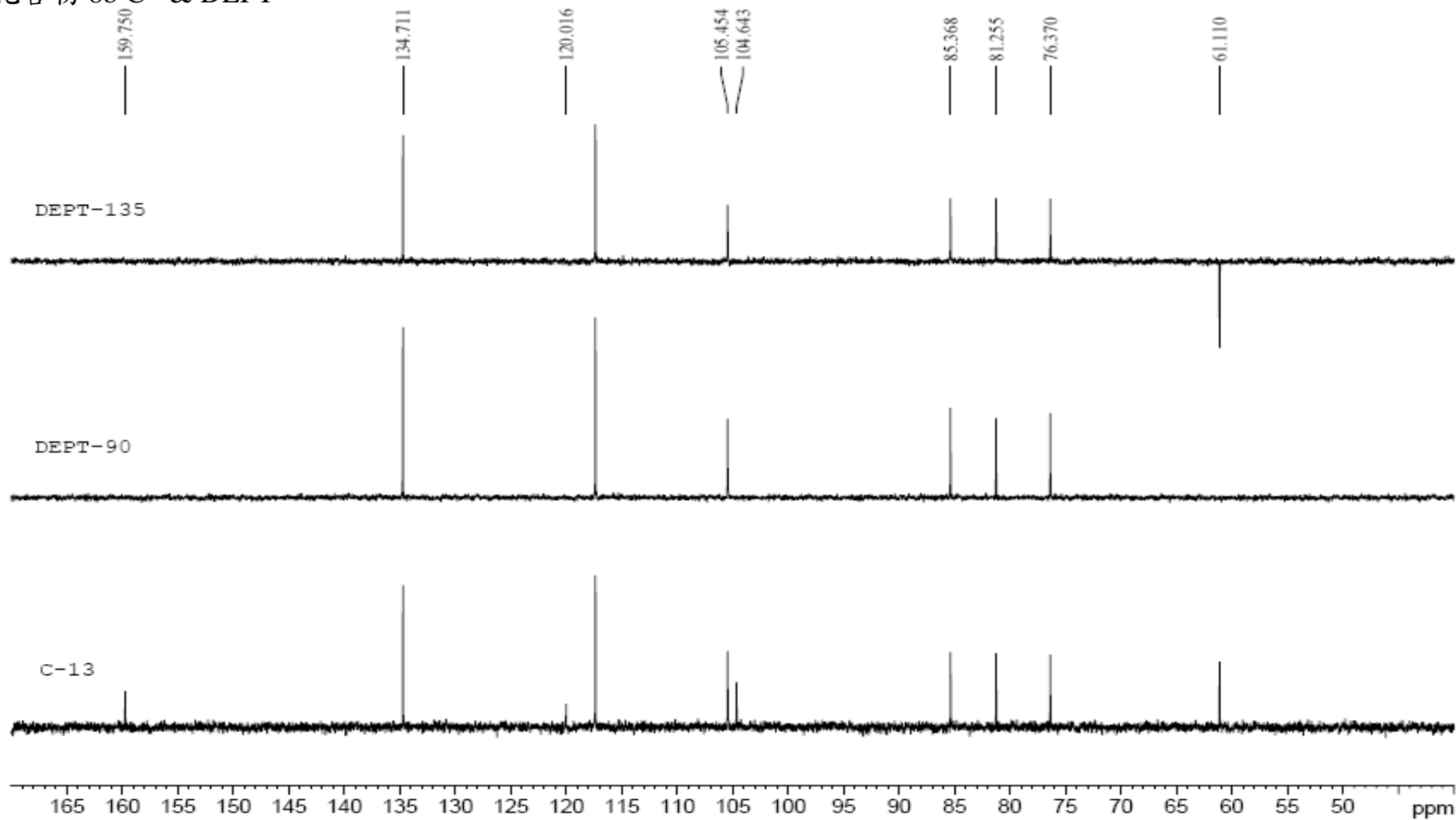
化合物 2a H-H cosy



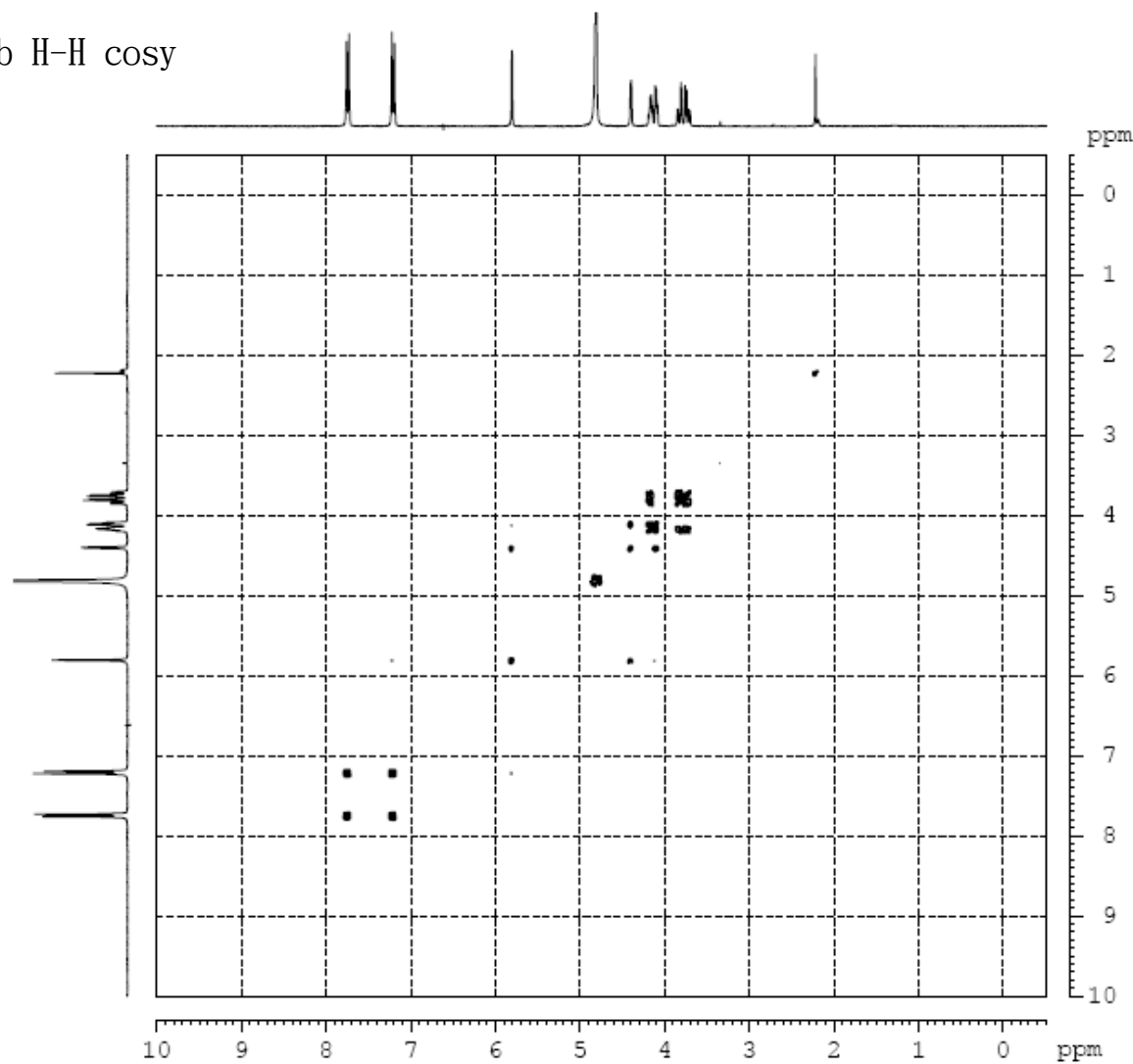
化合物 2b H-H cosy



化合物 8b C¹³ & DEPT



化合物 8b H-H cosy



```

Current Data Parameters
NAME      chen050413
EXPNO    5
PROCNO    1

F2 - Acquisition Parameters
Date_     20050413
Time      5.53
INSTRUM   spect
PROBHD    5 mm BBO

PULPROG   cosy45
TD         2048
SOLVENT   CDCl3
NS         8
DS         16
SBH        3156.566 Hz
FIDRES     1.541292 Hz
AQ         0.3244532 sec
RG         256
DW         158.400 usec
DE         6.50 usec
TE         300.0 K
DO         0.00000300 sec
D1         1.50000000 sec
IND        0.00031680 sec

----- CHANNEL f1 -----
NUC1       1H
P1         9.20 usec
PL1        0.00 dB
SFO1       300.1313907 MHz

F1 - Acquisition parameters
ND0        1
TD         512
SFO1       300.1314 MHz
FIDRES     6.165167 Hz
SW         10.517 ppa

F2 - Processing parameters
SI         1024
SF         300.1299502 MHz
WDW        QSINE
SSB        0
LB         0.00 Hz
GB         0
PC         1.00

F1 - Processing parameters
SI         512
MC2        OP
SF         300.1299510 MHz
WDW        QSINE
SSB        0
LB         0.00 Hz
GB         0

2D NMR plot parameters
CX2        15.00 cm
CX1        15.00 cm
F2PLO      10.002 ppa
F2LO       3002.02 Hz
F2PHI      -0.515 ppa
F2HI       -154.55 Hz
F1PLO      10.010 ppa
F1LO       3004.23 Hz
F1PHI      -0.508 ppa
F1HI       -152.34 Hz
F2PPMCM    0.70116 ppa/cm
F2HZCM     210.43768 Hz/cm
F1PPMCM    0.70116 ppa/cm
F1HZCM     210.43791 Hz/cm
    
```