



2004 台南市公車候車環境設施 綠驛

過去：樹蔭是最自然的社交空間

現在：公車亭為缺乏人性的等車空間

未來：公車亭平日為延續自然樹蔭的人造自然物，

時節慶典時則營造台南獨特的熱鬧氣氛



古城樹憶
老回沒有
沒盪漾
老年人
是你我

公車亭的
青春年
人納涼
我相約

的年代
樹蔭下
蟲鳴鳥
叫

秘密基地



NATIONAL CHIAO TUNG UNIVERSITY
GRADUATE INSTITUTE OF ARCHITECTURE



IFLA 學生國際競圖

I s s u e
Situating at the Shi-ba-jian mountain of HSINCHU city there is a 145 meters long, 85 meters wide elliptic bicycle race field. It is a huge, flat, unconsidered structure directly placed on the mountainside. To the citizen of HSINCHU city, it was of course a very brutal policy of public space due to the low using rate and its negligence of environment. Today, it has become a disused facility except during the county bicycle race. Therefore, how to balance the relation between bicycle race field and the Shi-ba-jian mountain meanwhile activate new possibility of mountain activities is the most important issue of our project.

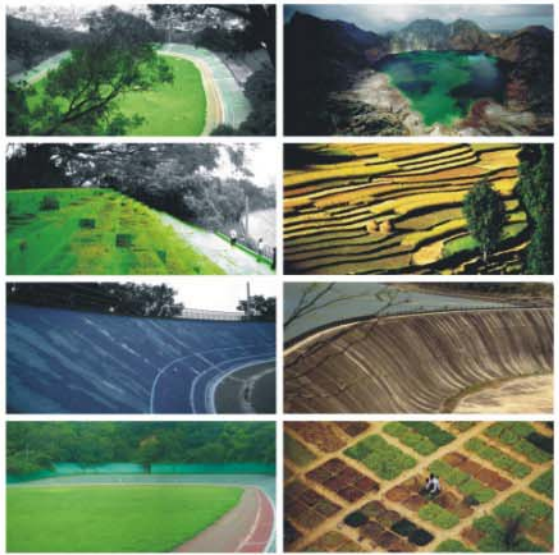
Revive forest experience
This site is full of opportunity for its convenience to city and holiday mountaineering crowd. During observing we discover the elliptic ramp has enclosed some very interesting space type which mostly looks like a bathtub in the forest. Consequently, the elements of water and forest shape its nature form instead of a physical building structure. The concept is about reviving the character and experience that originally existed in the site.

New program in old facilities
By re-program the bicycle race field, we combine park, city farm and leisure facilities with the old sport activities, allowing access of both nature and recreation. Now the citizen of HSINCHU can adopt a piece of farm of their own and the irrigate system will regularly water the crops while the absent from cultivation. Apart from those new programs, the structure of the bicycle race field is still reserved and working, retaining its adjustability and possibility in the future.

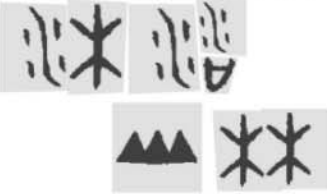
I s s u e
 Situated at the Shi-ba-jian mountain of HSINCHU city there is a 145 meters long, 85 meters wide elliptic bicycle race field. It is a huge, flat, unconsidered structure directly place on the mountainside. To the citizen of HSINCHU city, it was of course a very brutal policy of public space due to the low using rate and it's negligence of environment. Today, it has become a disused facilities except during the county bicycle race. Therefore, how to balance the relation between bicycle race field and the Shi-ba-jian mountain meanwhile activate new possibility of mountain activities is the most important issue of our project.

Revive forest experience
 This site is full of opportunity for it's convenience to city and holiday mountaineering crowd. During observing we discover the elliptic ramp has enclosed some very interesting space type which mostly looks like a bathtub in the forest. Consequently, the elements of water and forest shape it's nature form instead of a physical building structure. The concept is about reviving the character and experience that originally existed in the site.

New program in old facilities
 By re-program the bicycle race field, we combine park, city farm and leisure facilities with the old sport activities, allows access of both nature and recreation. Now the citizen of HSINCHU can adopt a piece of farm of their own and the irrigate system will regularly water the crops while the absent from cultivation. Apart from those new programs, the structure of the bicycle race field is still reserved and working, retaining it's adjustability and possibility in the future.



FOREST BATH



套裝旅遊線地景改造運動國內競圖 炭源

【觀光現象】

未來，政府即將把南庄的觀光資源分成幾個區域，生態農業
養殖區，歷史聚落豐采區，整合南庄旅遊情懷的資訊區。

自民國47年來南庄鄉人口統計資料

年度	總人口數	戶數	男	女
91	12102	3588	6784	5318
90	12239	3513	6844	5395
80	14376	3136	7940	6436
70	19486	3363	10395	9091
60	25269	3967	13401	11868
50	22363	3559	11347	11016

但是，從人口數據顯示，失去了昔日的礦業
及林業，現在的南庄雖然積極的從觀光工業
重振往昔的盛況，但是從人口流失的速度看
來，現在的南庄正以快速的比例流失青壯年
人口。

現象一：

所以，當週末假日觀光所帶來的龐大人潮 消費 當地的生態資源，
過多的消費將影響境內生態的 平衡。

現象二：

境內的人文及歷史觀光景點，屬於複合式的文化，
生態的:蓬萊溪生態步道、向天湖、神仙谷、風美瀑布及三角湖
歷史的:南庄大戲院、桂花巷、乃木崎、永昌宮、老郵局、水汙頭洗衫坑
人文的:客家、福佬、泰雅及賽夏族等，多元文化風貌
欠缺一個強而有力的觀光 主題。

如果每一個城市都會有一個主題，那屬於南庄的主題是什麼呢???

南庄的歷史:

區位的優勢 + 豐富的林礦業 → 南庄的黑金歲月

南庄的未來:

豐富的資源 + ? → 南庄的產業觀光

我們企圖尋找一個積極新的元素，是可以串聯南庄的多元文化，也可以重新創
造南庄的經濟價值，尋求觀光的在地性，因為唯有對在地文化的認同，才有可
能進一步的讓觀光升級



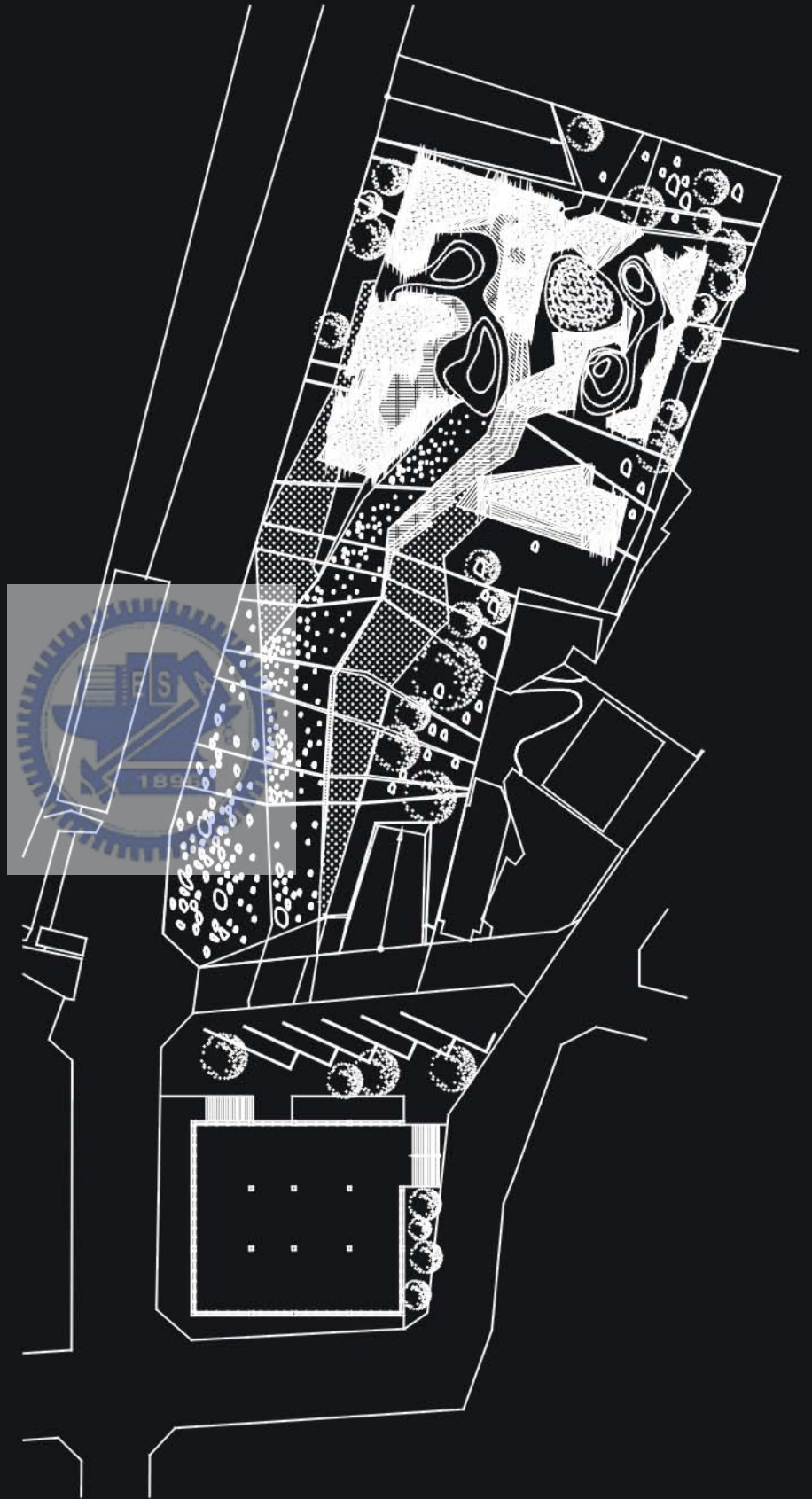




走過從前，古宅邊，廟口前，
總有先人走過的痕跡。
看看現在，城鎮裡，田野間，
更見今人努力的成果。
美麗的家園，鳥兒飛，樹兒長，
使大地充滿了生氣。

可愛的家鄉，你來說，我來唱，讓生活更增添樂趣。

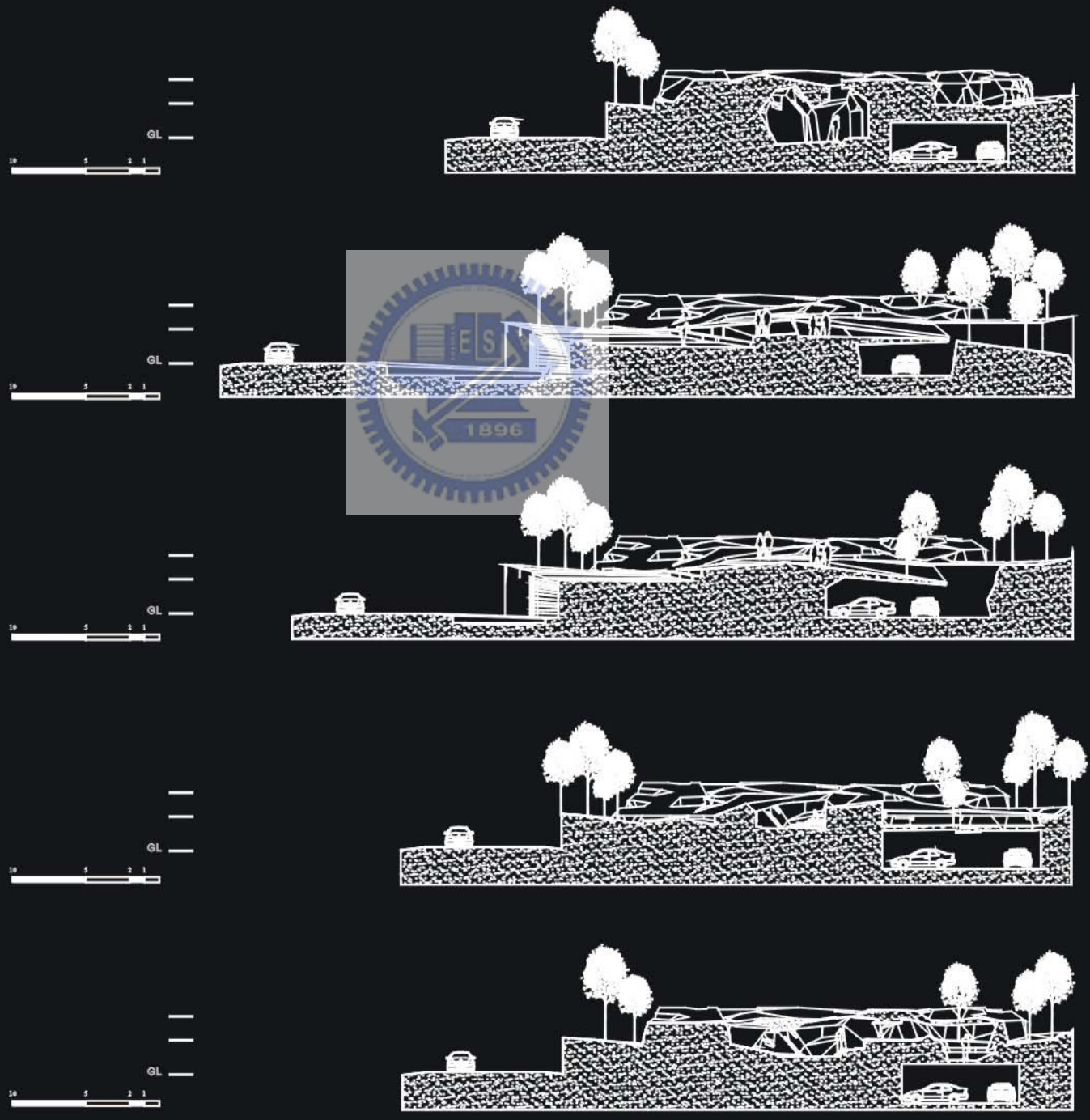








NATIONAL CHIAO TUNG UNIVERSITY
GRADUATE INSTITUTE OF ARCHITECTURE





NATIONAL CHIAO TUNG UNIVERSITY
GRADUATE INSTITUTE OF ARCHITECTURE