



001. Beijing-nijieB Houses

traditional courtyard housing in Beijing

Completed 2004.01.16



2004 遠東國際數位建築競圖入圍作品
traditional courtyard housing in Beijing



Rebuild or Fill the fragmental paces

The hutong is a characteristic aura ; a street accreted by eaves and walls of the age-old box building in Beijing ◦

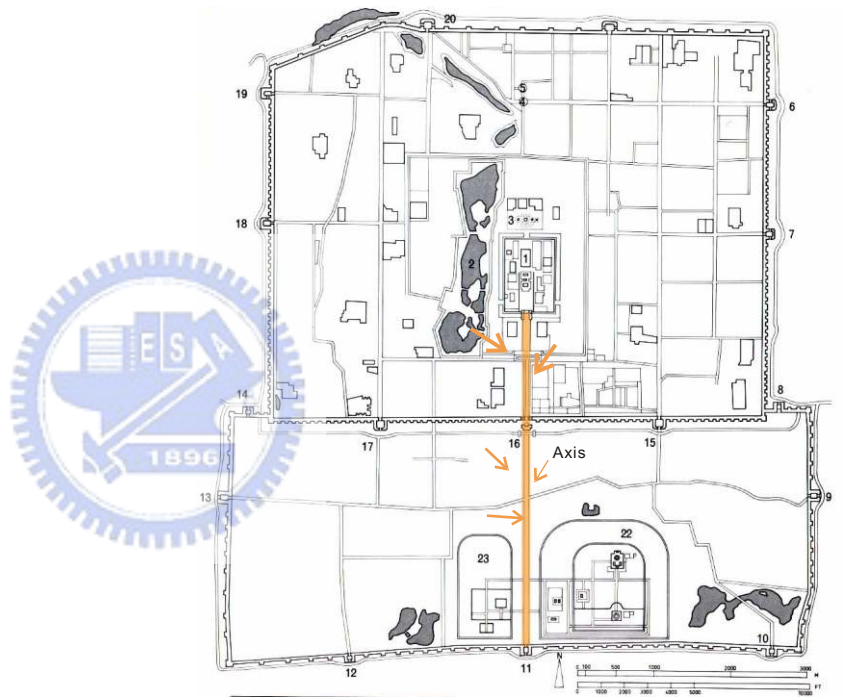
We try to recombine the inner and outer spaces by cad operation ◦

Attribute the culture trait of hutongs to the central axis , then , accrete the scrappy group ◦
 The anomalism replaces the rules , and the fragmentation replaces the cosmos , to be another kind of the space-time continuum ◦

We expect to reenact the culture trait of the original hutongs in Beijing ◦

The Axis of Beijing

Photo :Peking under the Ming and Qing.



重置或裝填碎化空間

在北京,胡同代表著一種獨特的空間氛圍:是四合院房屋後簷牆所連接的交通街道。

藉由電腦的輔助運算,討論其中介質的變化,企圖重組空間裡外的關係。

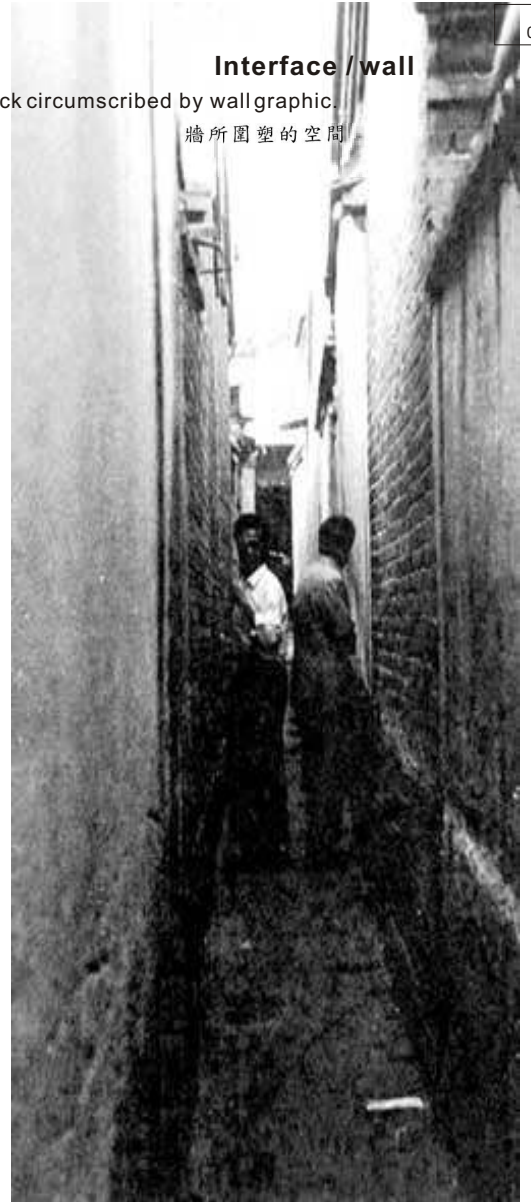
使用胡同的特質填塞入北京原本的中央軸線,已連結原本被切割開的社群,用不規則取代規則,用碎化取代統一,有秩序。

期待在北京城這個大都市裡再現原有的聚落(胡同)特質.期待在北京城這個大都市裡再現原有的聚落(胡同)特質。

Interface / wall

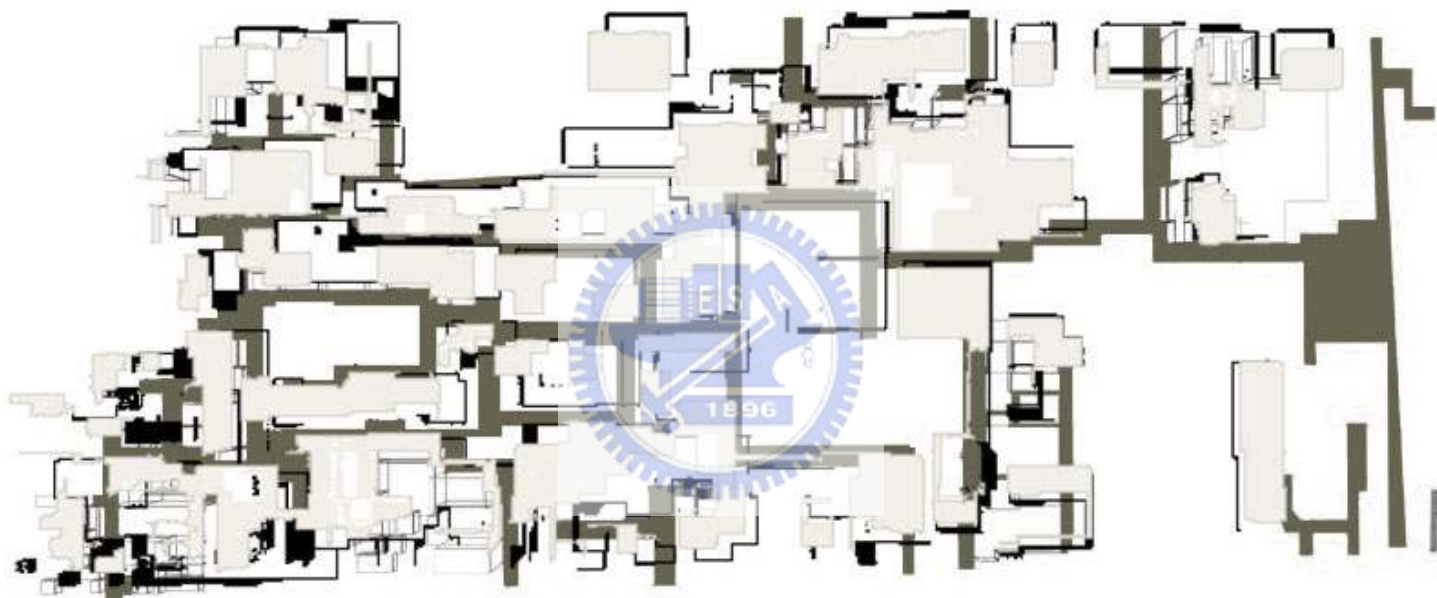
The block circumscribed by wall graphic.

牆所圍塑的空間



4D dimensions

四度空間次元圖



Interface / wall

We try to find the relations of the stere-space in hutongs by computistical operation ◦

The wall is the role to demarcate inner and outer , upper and subjacency , lords and visitors ◦

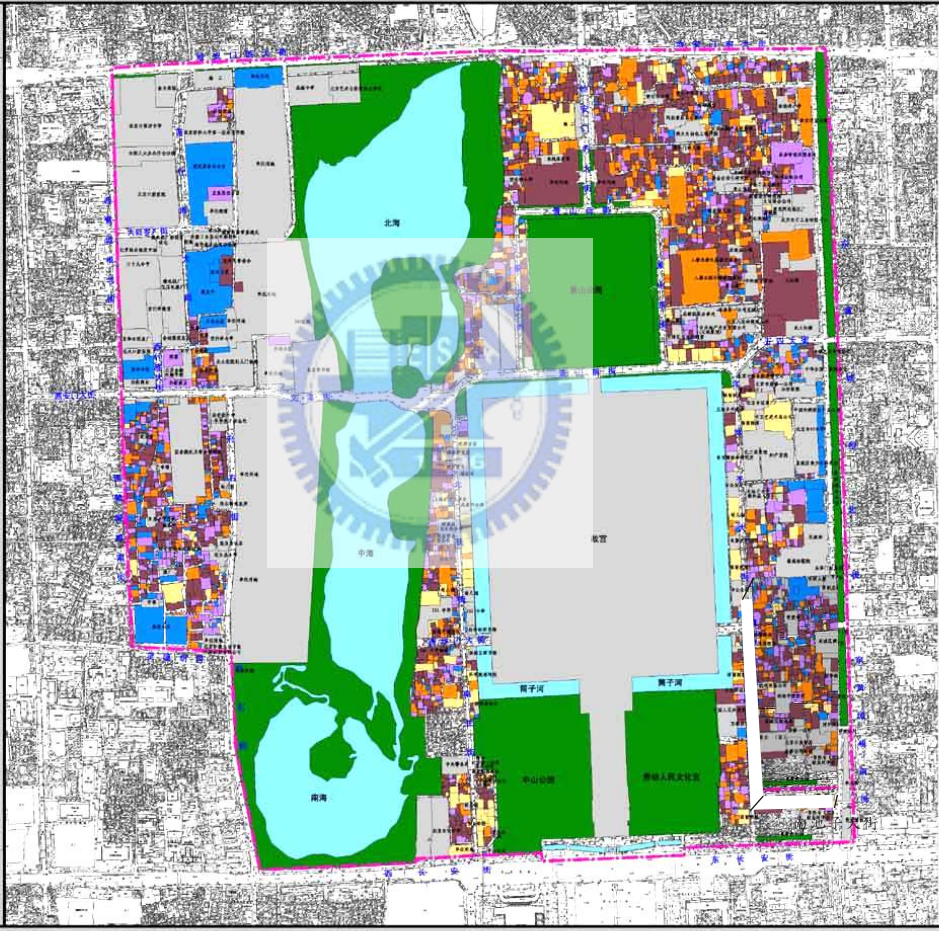
藉由電腦的輔助運算, 討論胡同所蘊藏的3向度空間關係. 在這個涵構裡面, 牆所扮演的角色是區隔內外, 上下, 主客的介面.

北京皇城保护规划

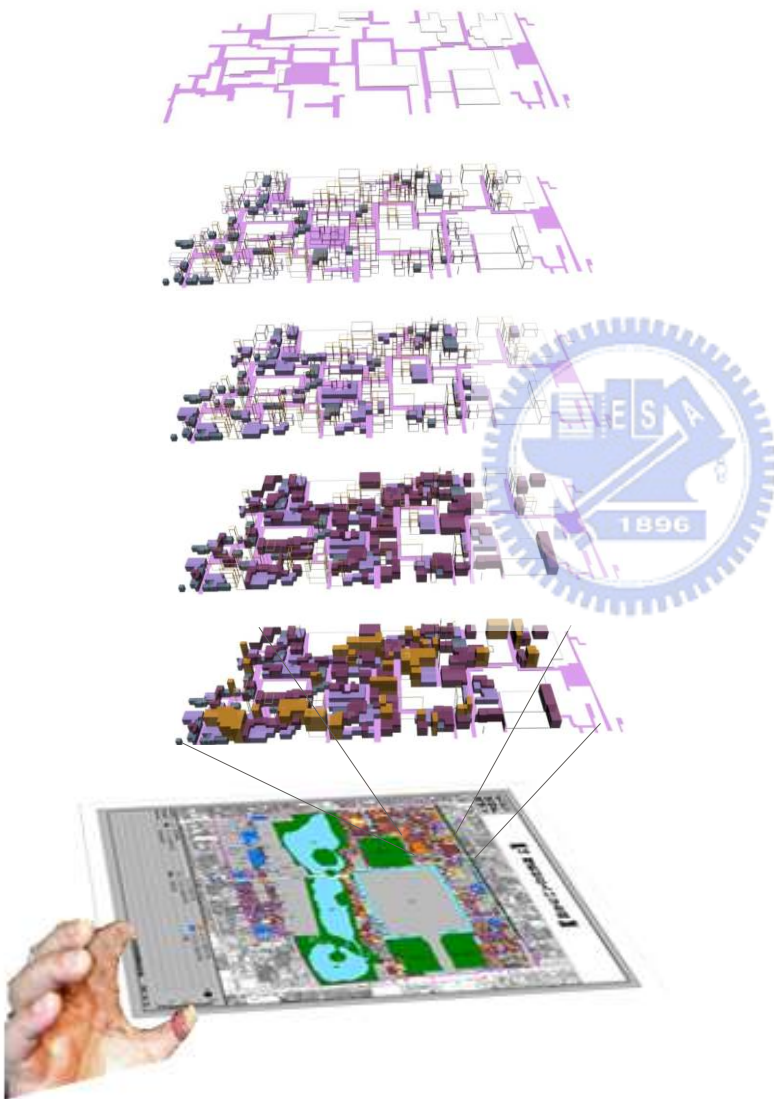
10 现状居住人口分布图

图例

- 规划范围
- 非居住用地
- 公共绿地
- 河湖
- ≥2人/100平方米
- 1-2人/100平方米
- 0-1人/100平方米



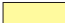




北京市城市规划设计研究院 二零零三年三月



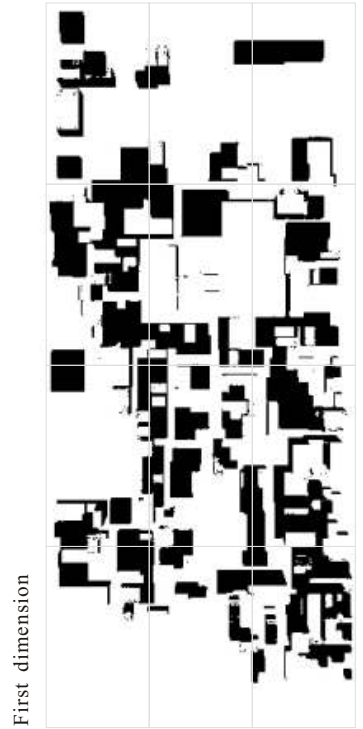
Density of Beijing

Photo 1 :density analysis of hutong.

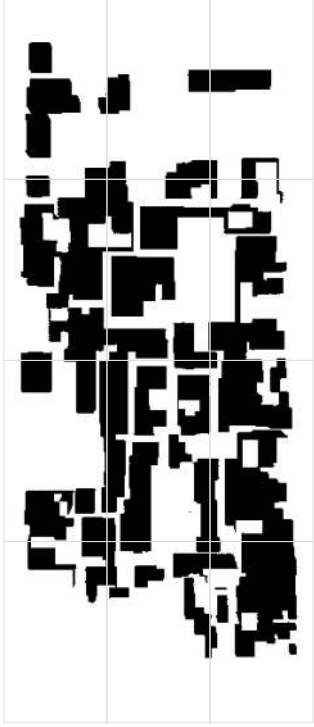
Photo 2-3:

	2	People	100m ²
	2-4	People	100m ²
	4-7	People	100m ²
	7-10	People	100m ²
	10	People	100m ²

A piece of ink rubbing



Second dimension

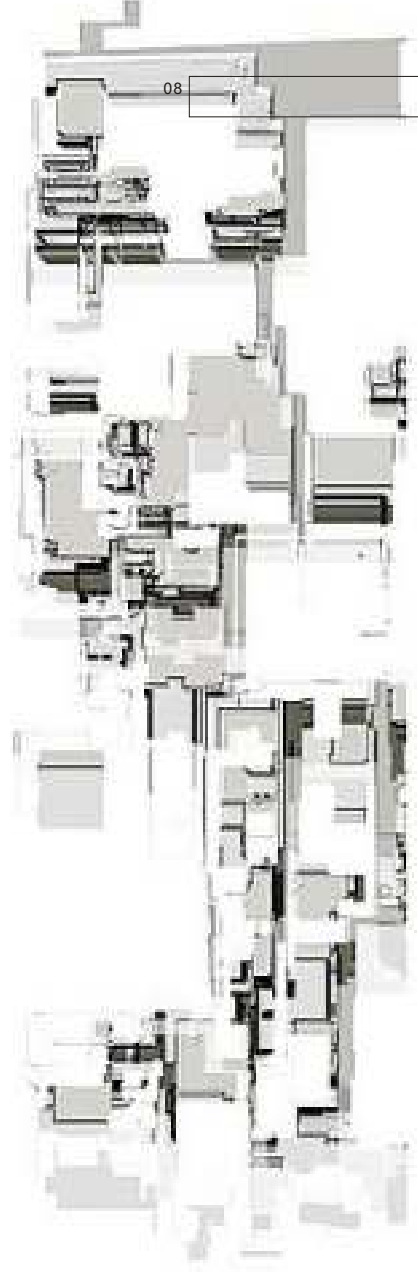


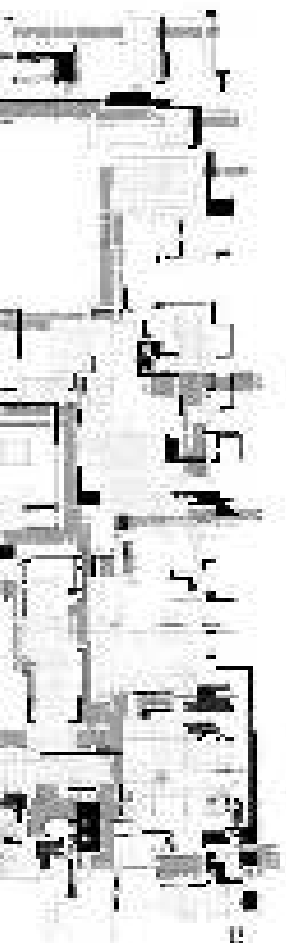
Third dimension



Furniture board A
胡同学俱版

The inner space fabric graphics

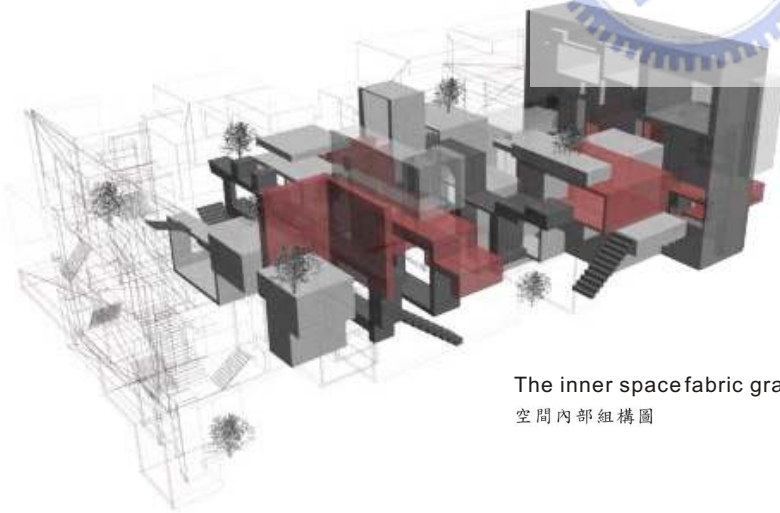
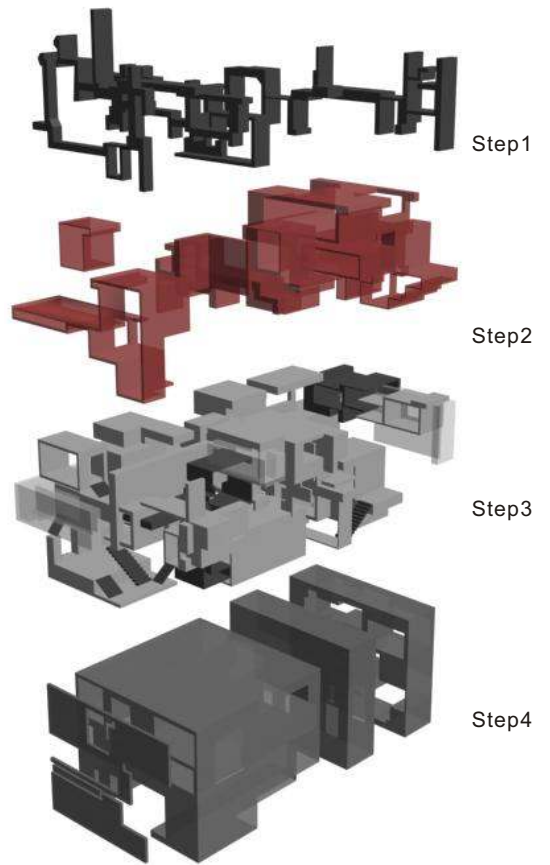




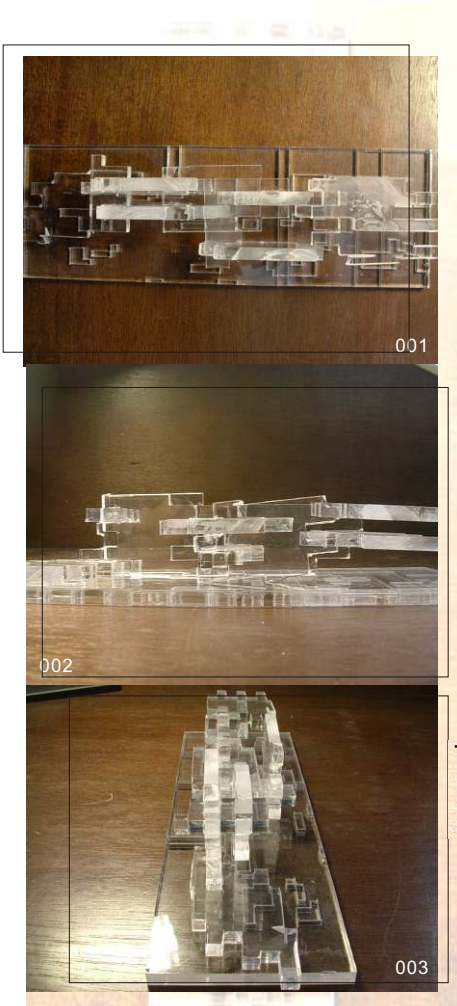
The process of computistical operation

The diffuse stere-hutongs graphics by computistical operation.

Step1---step2-----step3--step4

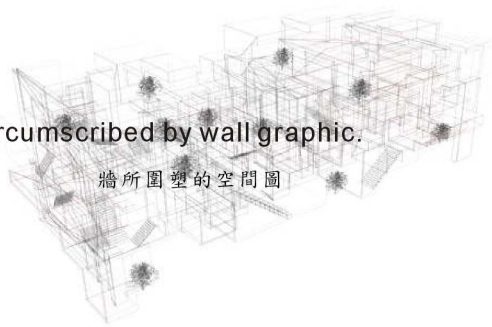


The inner spacefabric graphics
空間內部組構圖

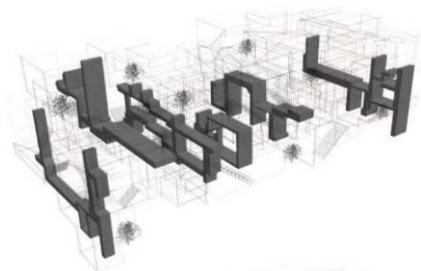


The space circumscribed by wall graphic.

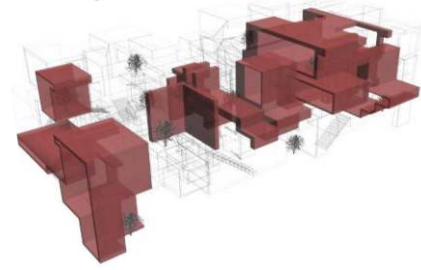
牆所圍塑的空間圖



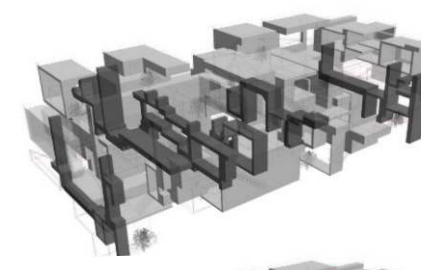
The inner space fabric graphics



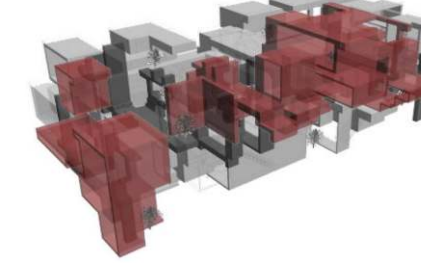
Prototype A



Prototype B



Prototype C

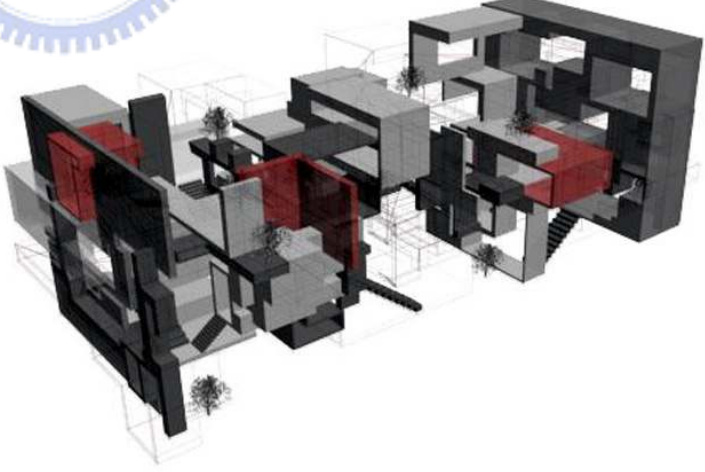


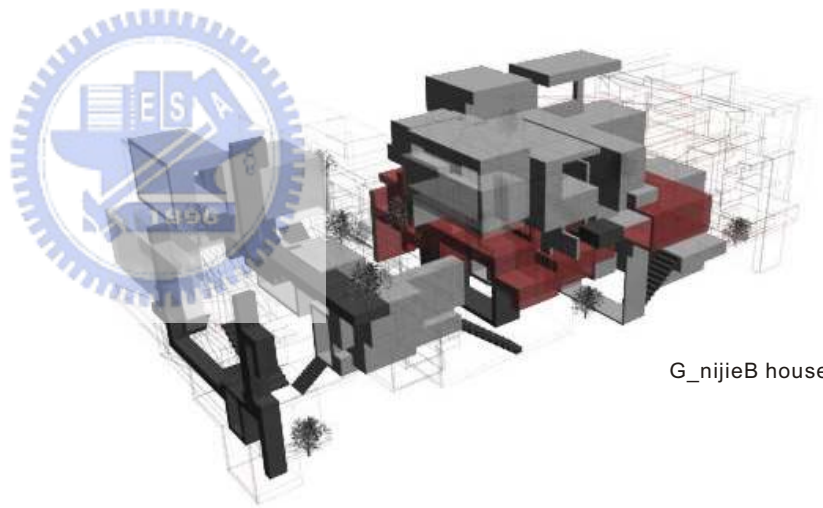
Prototype D



IF
Prototype A+B
Prototype A+C+D
Prototype B+D

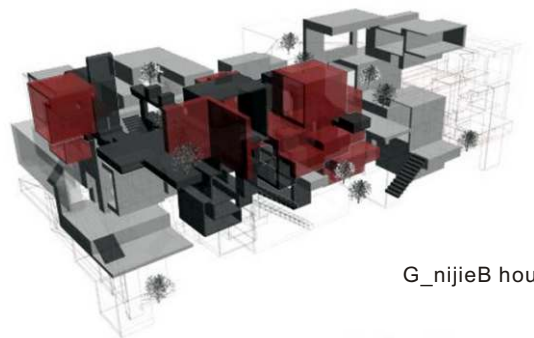
THEN
=C(g_nijieB House III)
=E(g_nijieB House
=.....



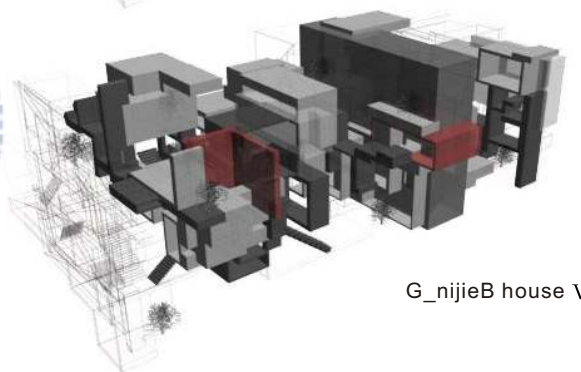


G_nijieB house I

The cumulative result afterward computistical operation



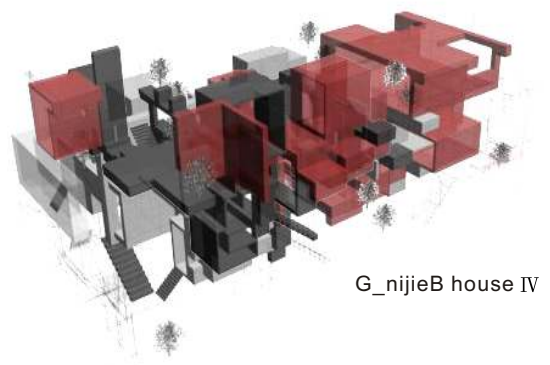
G_nijieB house VIII



G_nijieB house V



G_nijieB house IX

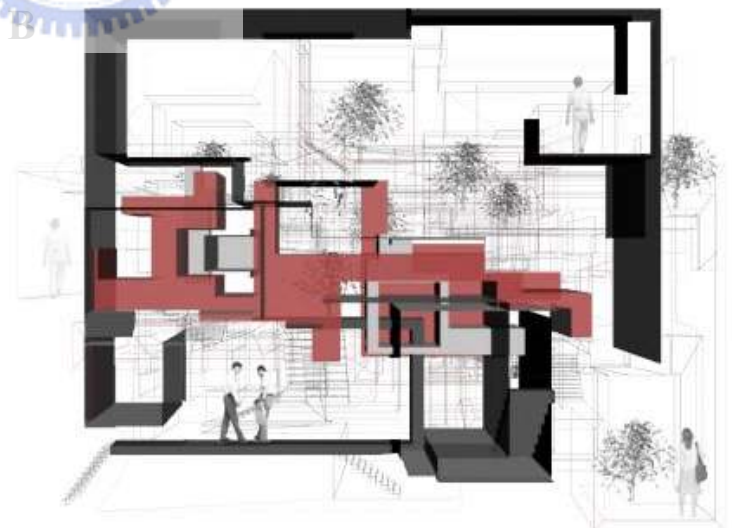


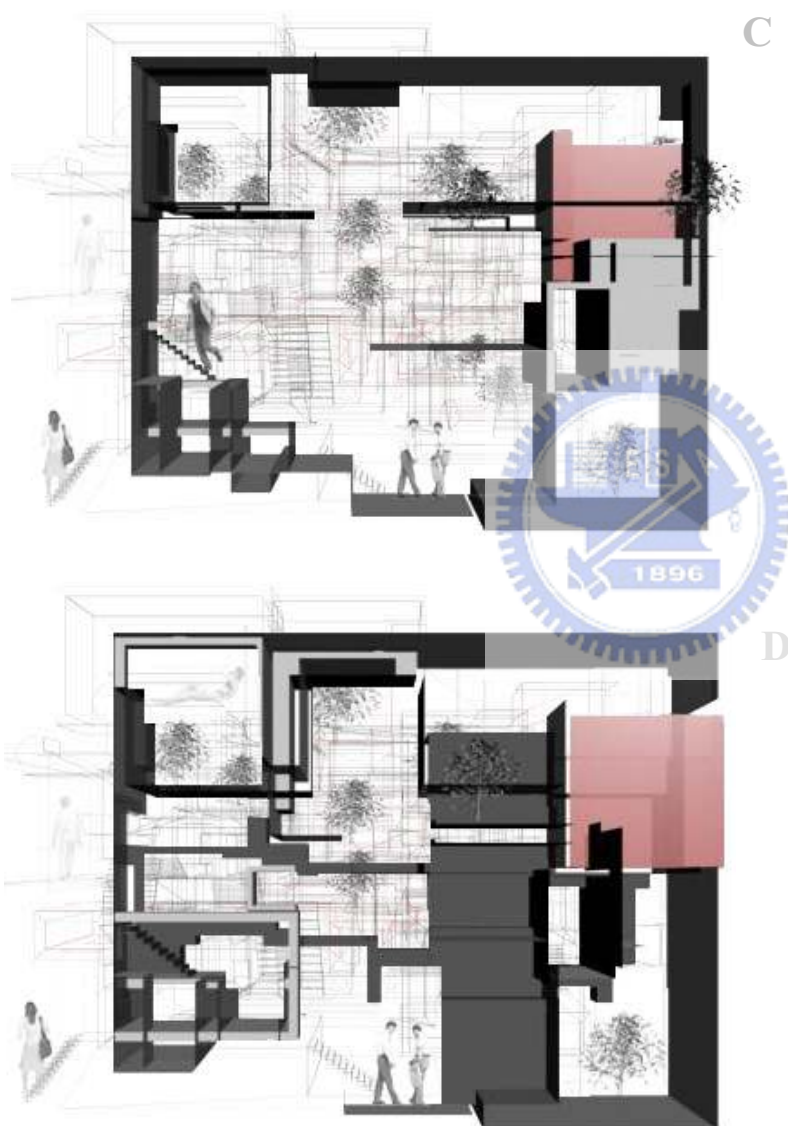
G_nijieB house IV

Section



The unit section afterward computistical operation.



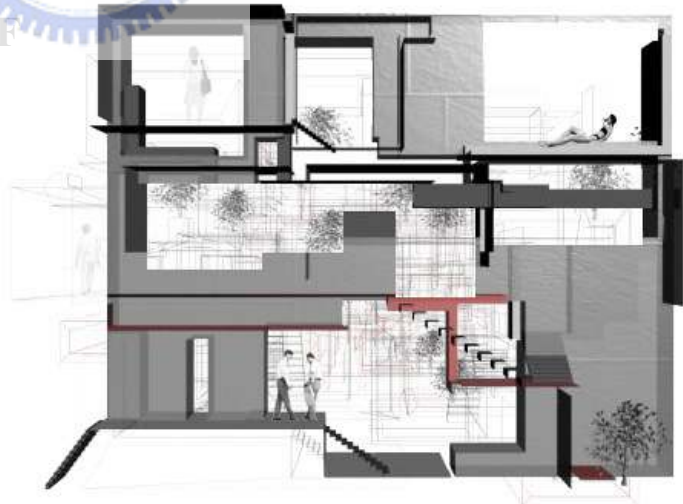


E



The unit section afterward computational operation.

F



Simulation



Rebuild or Fill the fragmental paces

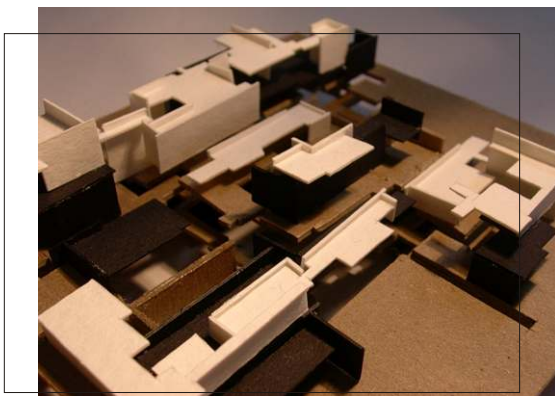
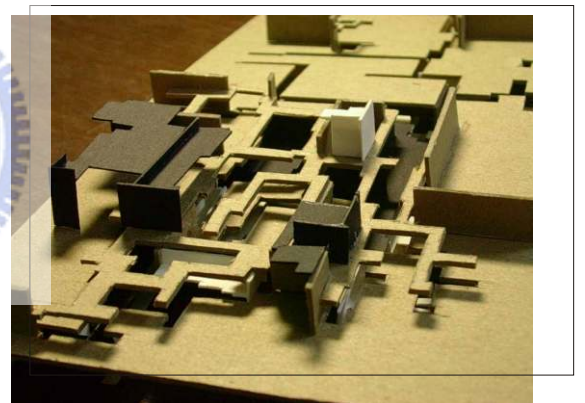
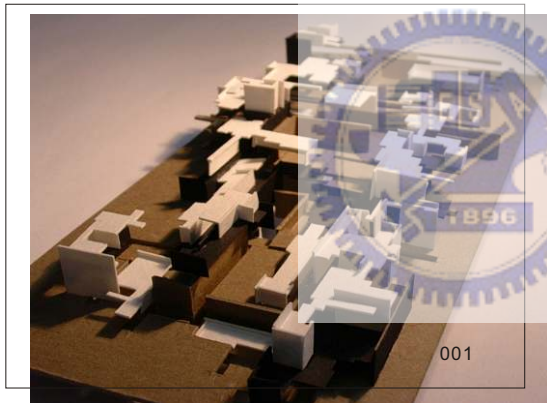


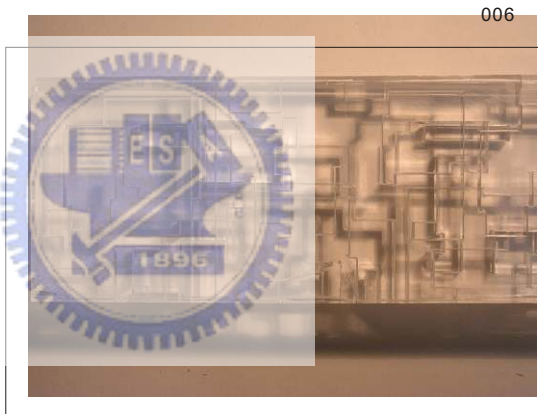
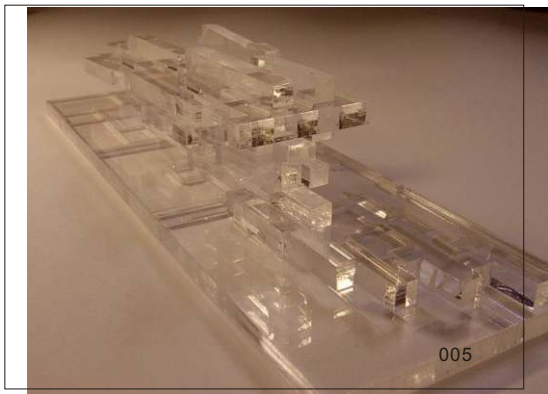
Simulation



Conceptual model

The space circumscribed by wallgraphic.





The space circumscribed by wallgraphic.

