



## 004.水都台北

2004年台灣地景交大工作坊與荷蘭 sputnik 團體合作  
作品發表於Dialogue 雜誌 NO. 76

Team member:

Shao, Wei-Yen  
Lee, Hui-ju  
Wu, Tzu-Hua



**HISTORY**

**INDUSTRY OF WATER**



**RIVER TRANSPORT**



**NOWDAYS**

**INDUSTRY OF 7-11**



+

**FLOOD**



=

**MOBILE 7-11**



We try to conceptualize the observation and then we can figure out the possible -connected relationship.



## Industry of water

At first ,we find that people transport by boat .that means the trade on the water could be happen.

以前的人轉運是藉著船,所以水上市場也由此產生.



### occupation of 7-11 in the city

With the growth of the city ,there is another trading mode spreads on the land-the 7-11 shops.

隨著城市不斷的發展,新的一種購物方式7-11也取代了傳統的交易方式.

History + Nowadays + Flood = **Mobile 7-11**

By the map we can figure out the spreading is so fast .



The map of 7-11 in the SHETZ Island



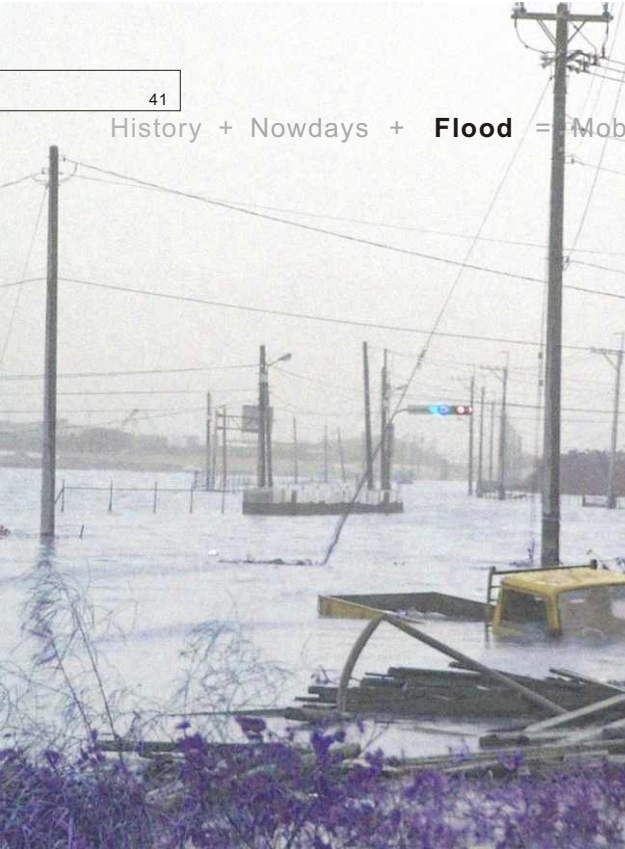
### occupation of 7-11 in the city

It's our imagination of the occupation of 7-11 which may happen in the future.  
在不久的將來7-11也將佔據整個城市。

History + **Nowdays** + Flood = Mobile 7-11



History + Nowdays + **Flood** = Mobile 7-11







But now, the flood comes into Taipei, then two questions come out in our mind. In one hand, does that means the possibility of the water-transport might happen again? In the other hand, even if this city is covered by water, can the consume in 7-11 still continue?

## Simulation

Therefore, we imagine that when all the things come together, what will happen?

然而,當發生在淹水時,水上7-11將會如何影響建築?



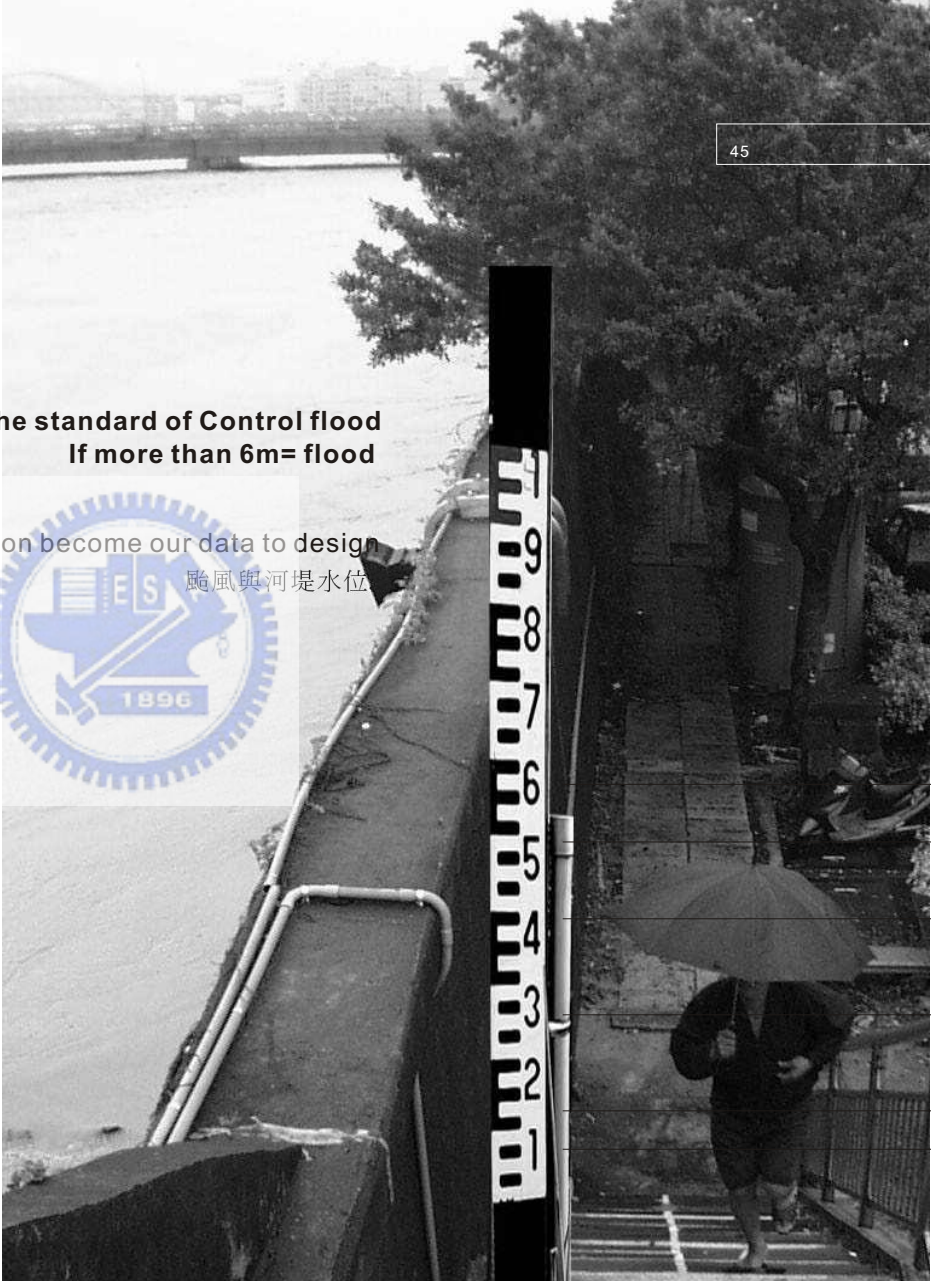


## The map of 7-11 in the SHETZ Island

This is the range of our site

**The standard of Control flood  
If more than 6m= flood**

These measure of water in each typhoon become our data to design  
颱風與河堤水位



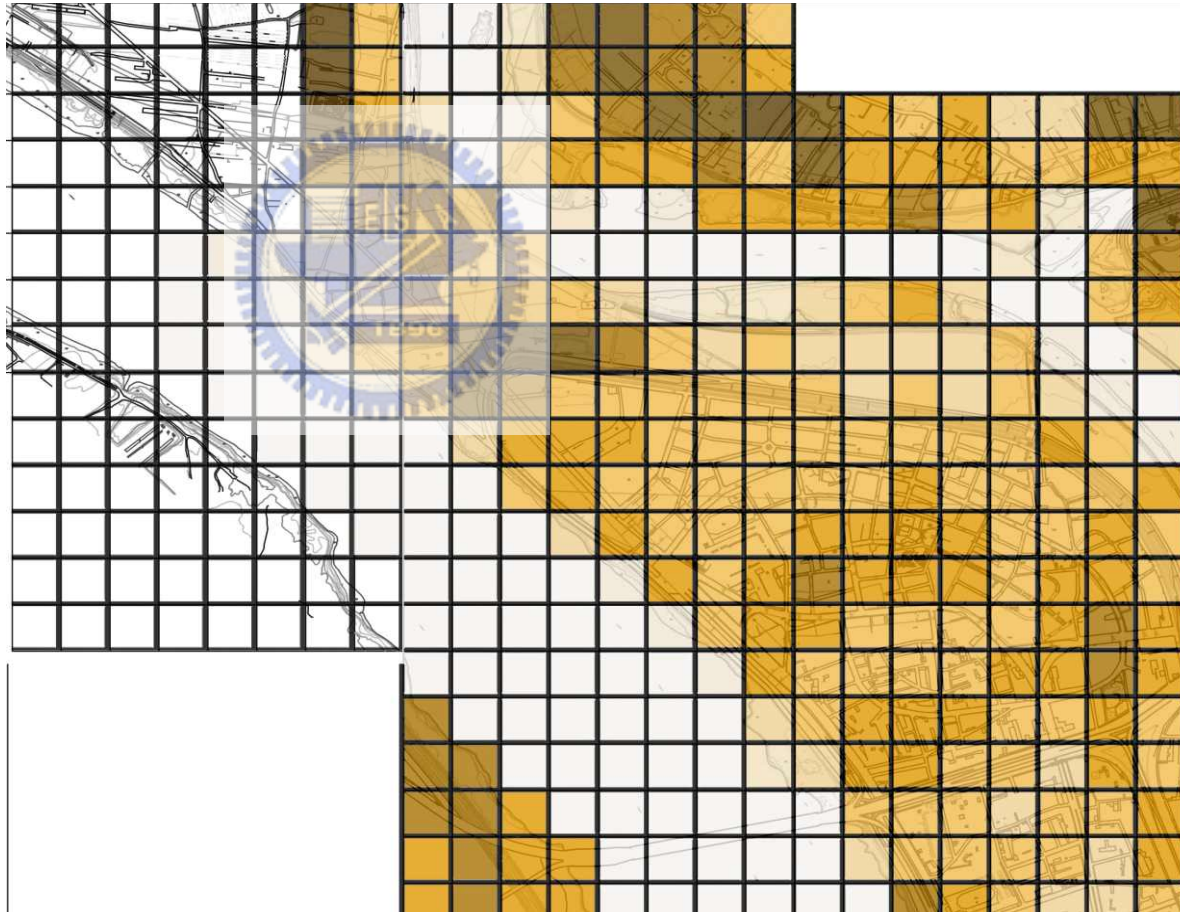


- ▶ 象神 (XANGSANE typhoon )
- ▶ 納莉 ( NARI typhoon )
- ▶ 艾利 (AERE typhoon )
- ▶ 溫妮 (WINNIE typhoon )
- ▶ 康森 (CONSON typhoon )
- ▶ 尹布都 (IMBUDO typhoon)

## The HEIGHT of Shetz island

And this page is the database of the height of the terrain in the Shetz island .these colors shows each different height level. The darker one means the higher.

不同顏色代表不同的高程。

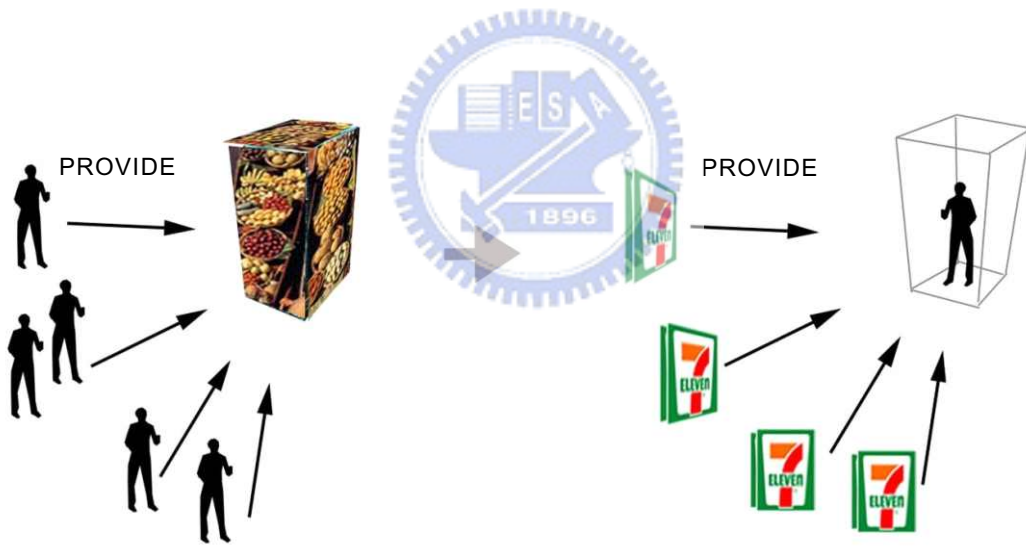




The HEIGHT of Shetz island



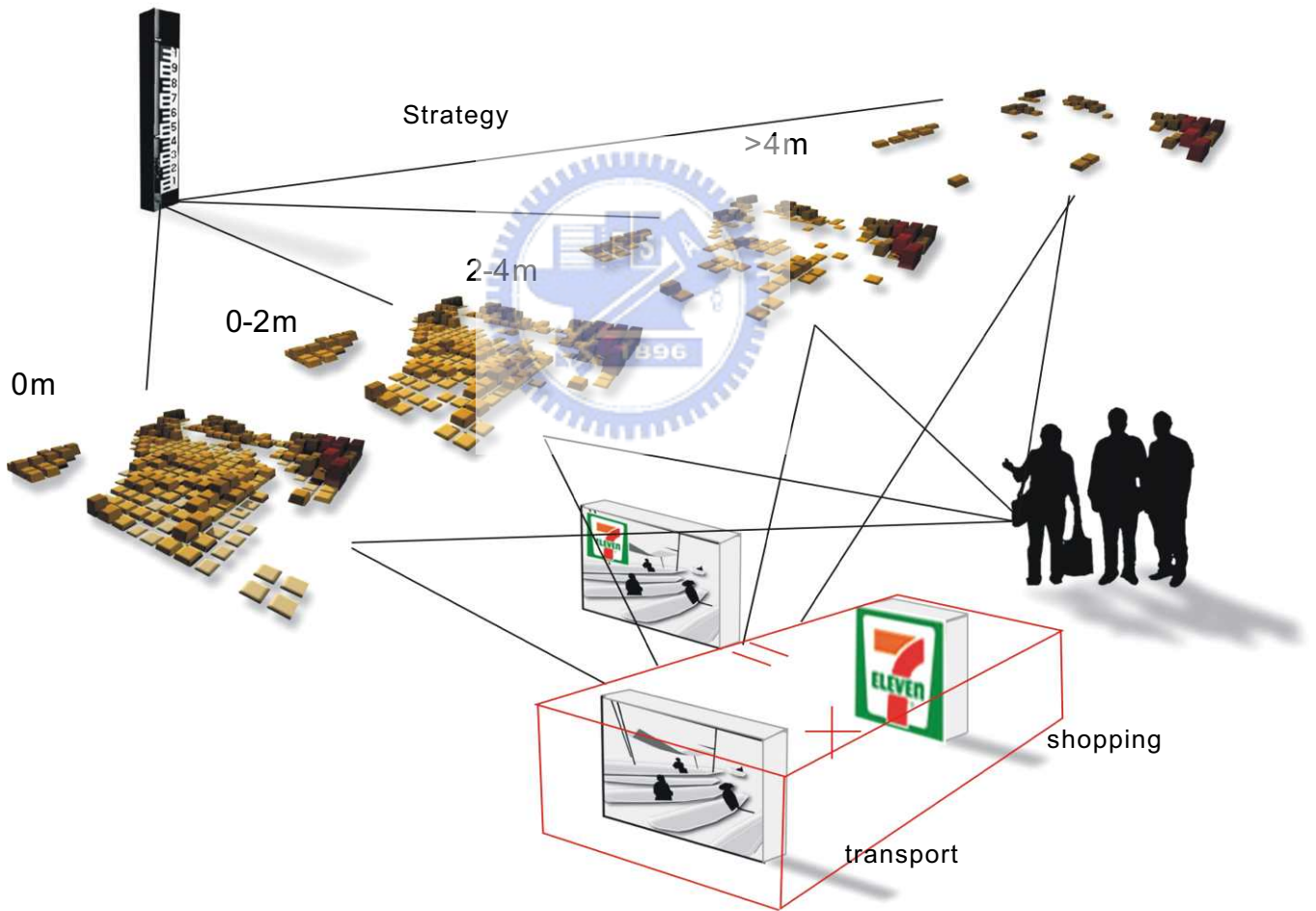
### The CHANGE OF SHOPPING ACTIVITIES

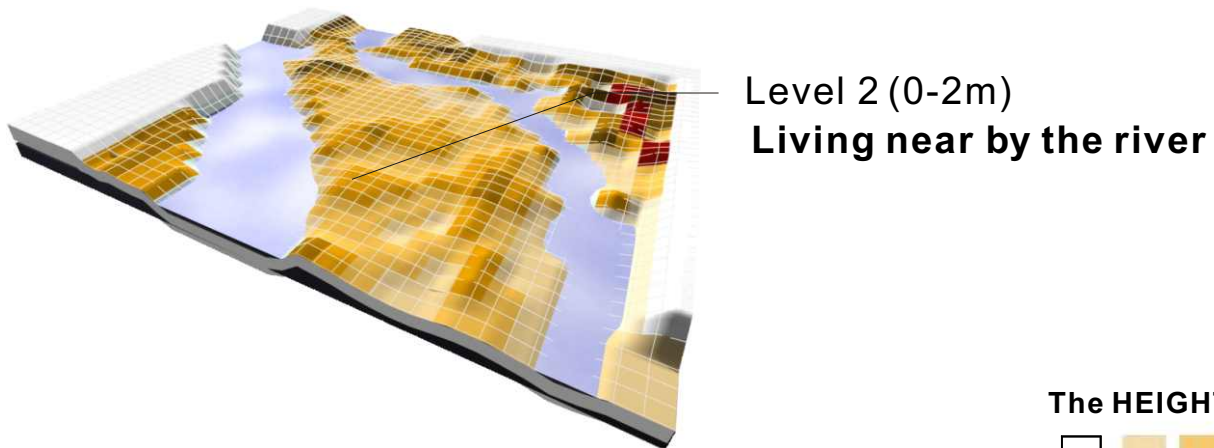
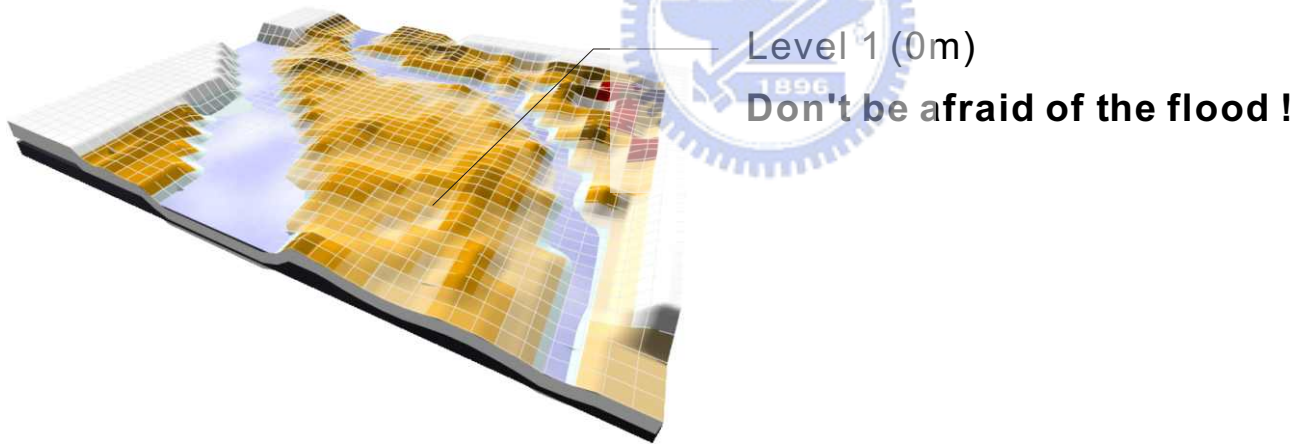
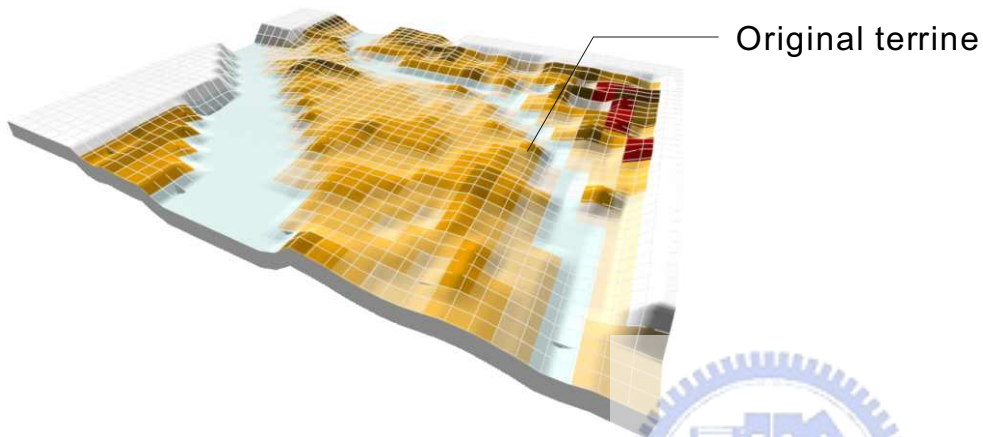




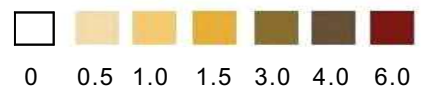
# The map of 7-11 in the SHETZ Island

The staff gauge of water

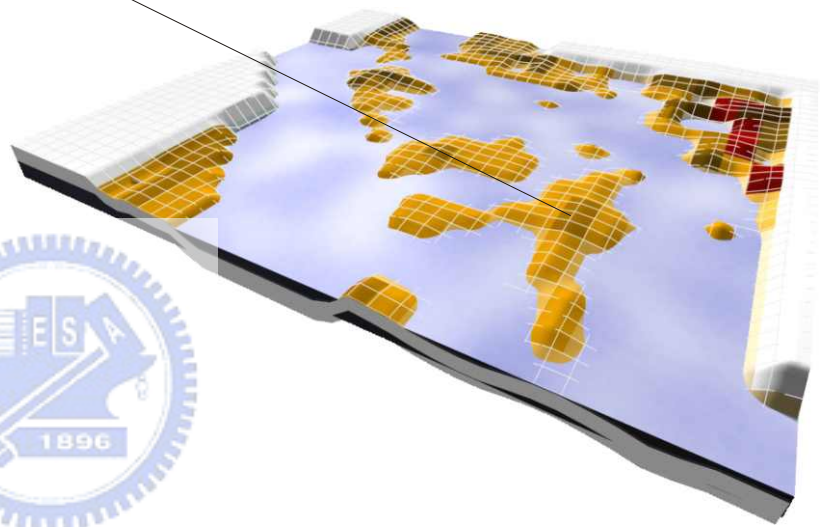




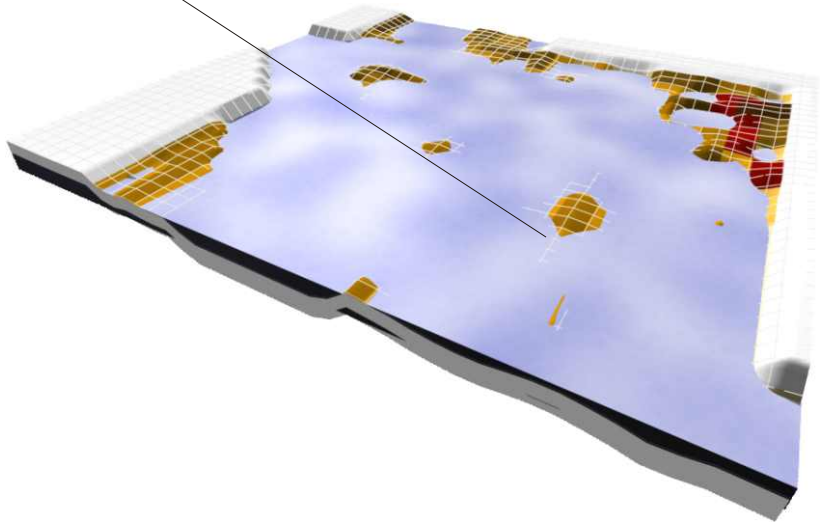
The HEIGHT of Shetz island



Level 3 (2-4m) 7-11city  
**7-11 is my neighborhood**

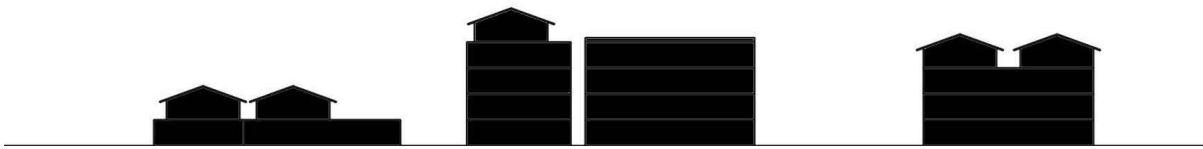


Level 4 (>4m) new landscape  
**water paradise !**

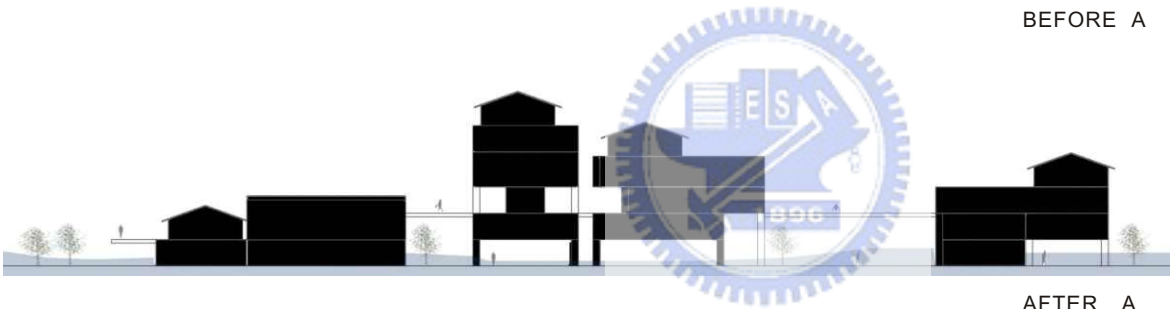


**Building appear above the water line**

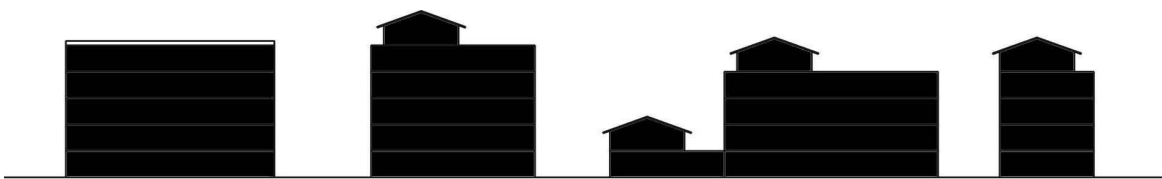




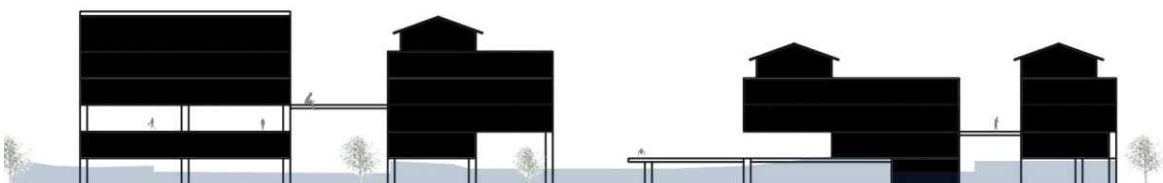
BEFORE A



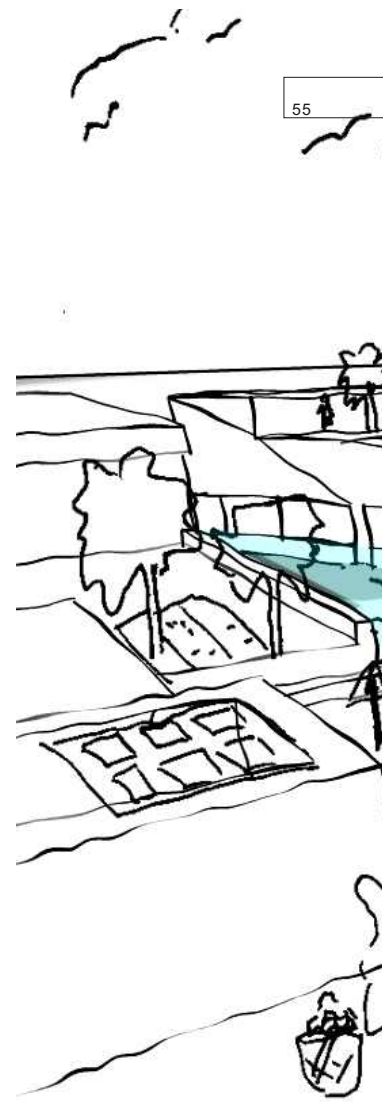
AFTER A



BEFORE B



AFTER B



**What will happen in 2046?**

### The simulate of 2046

Building appear above the water line

