

Figure 6-20. Variation of instantaneous streamlines with Reynolds number (Velocity ratio 3:1 and $L1=10$). *Continue...*

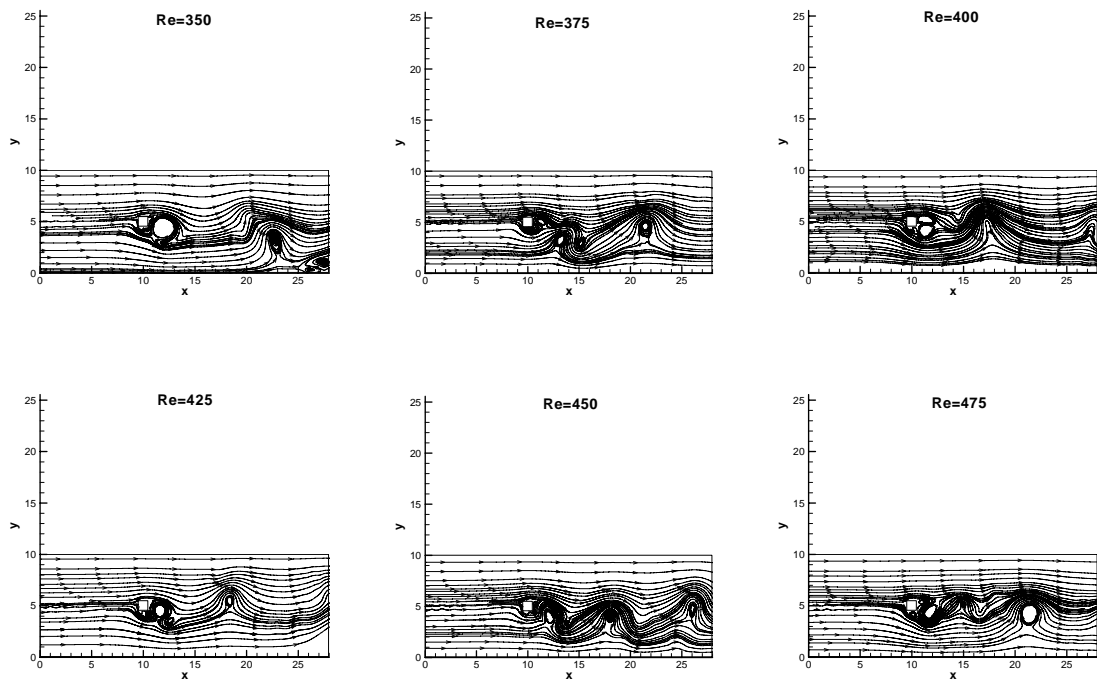


Figure 6-20. Variation of instantaneous streamlines with Reynolds number (Velocity ratio 3:1 and $L1=10$).



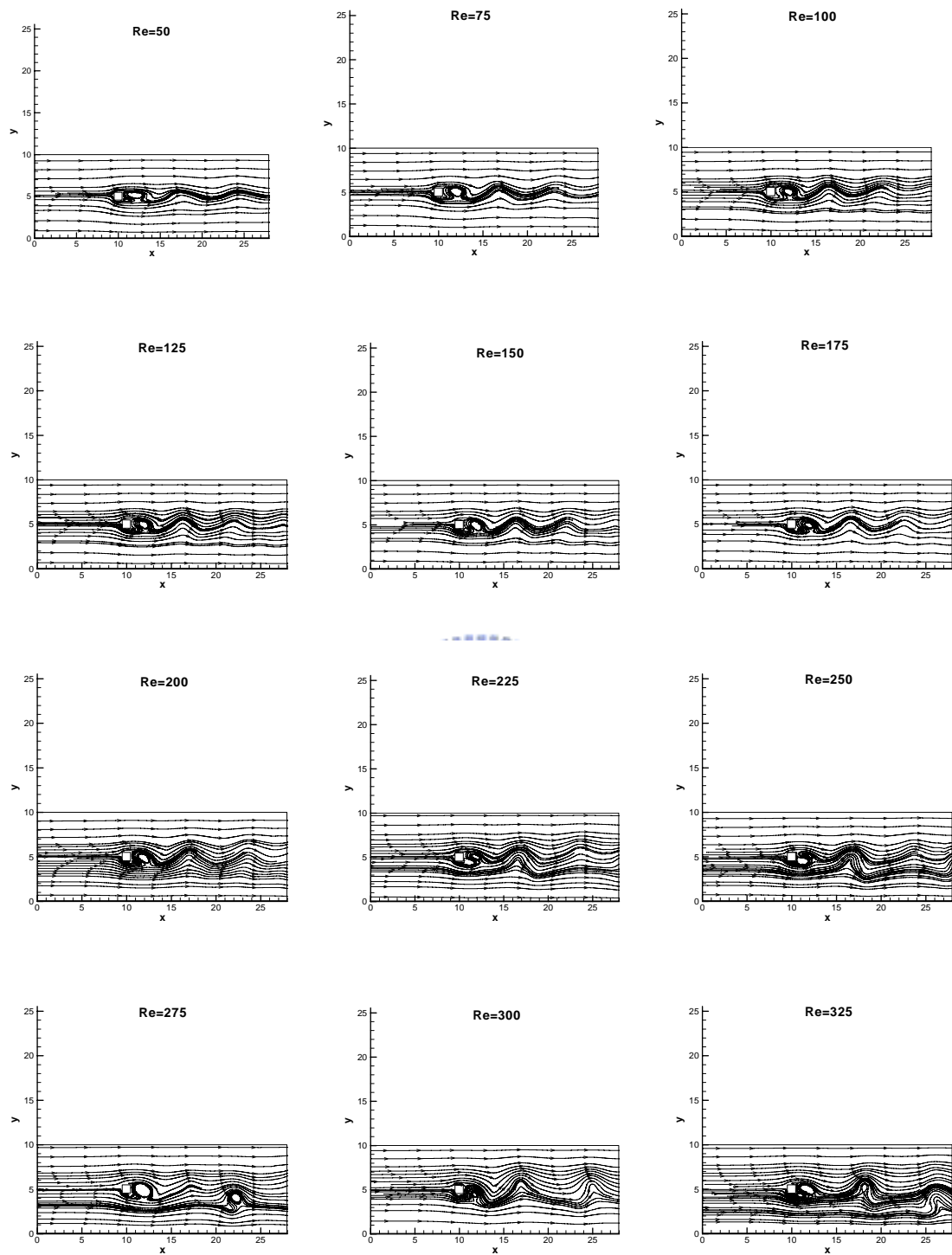


Figure 6-21. Variation of instantaneous streamlines with Reynolds number (Velocity ratio 3:2 and $L1=10$). *Continue...*