



Main Project

Civic Street - Government Administration /Studio Work of Urban Planning and Design/

Spring, 2006
Tutors: Lian Chuan Chen, Chung Wei Su

/ PROLOGUE /

This design project is based on a new urban renew project in Taipei city for 2008. In order to extend the transport line from the C.K.S international airport in Taoyuen to Taipei for the increasing visitors, an airport rapid transit from the terminal to the central main station of Taipei is on construction. And more, two whole new towers about 350m and 270m height will stand next to the main station as the terminus. That means there will be a new vision for Taipei to imagine the future.





SITE MODEL



Taipei Basin

/ SITE /

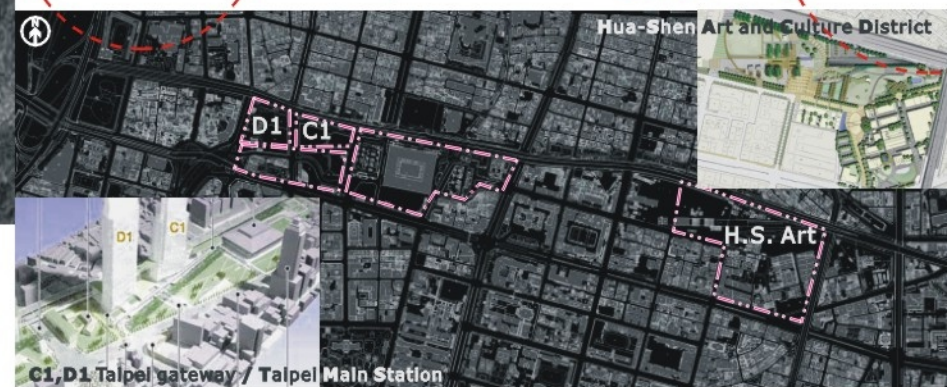
The urban renew project comprehends the central zone from the river bank in the west to the Hua-Shan art district in the east, including the main station and the government office districts. Due to that new project on construction which brings a whole new vision to Taipei city, I set up the site between main station and Hua-shan art district and program it as a new central government administration zone to gather all separating bureaus into one official specific zone.



C.K.S international airport



STREAM OF PEOPLE



GREEN BELT

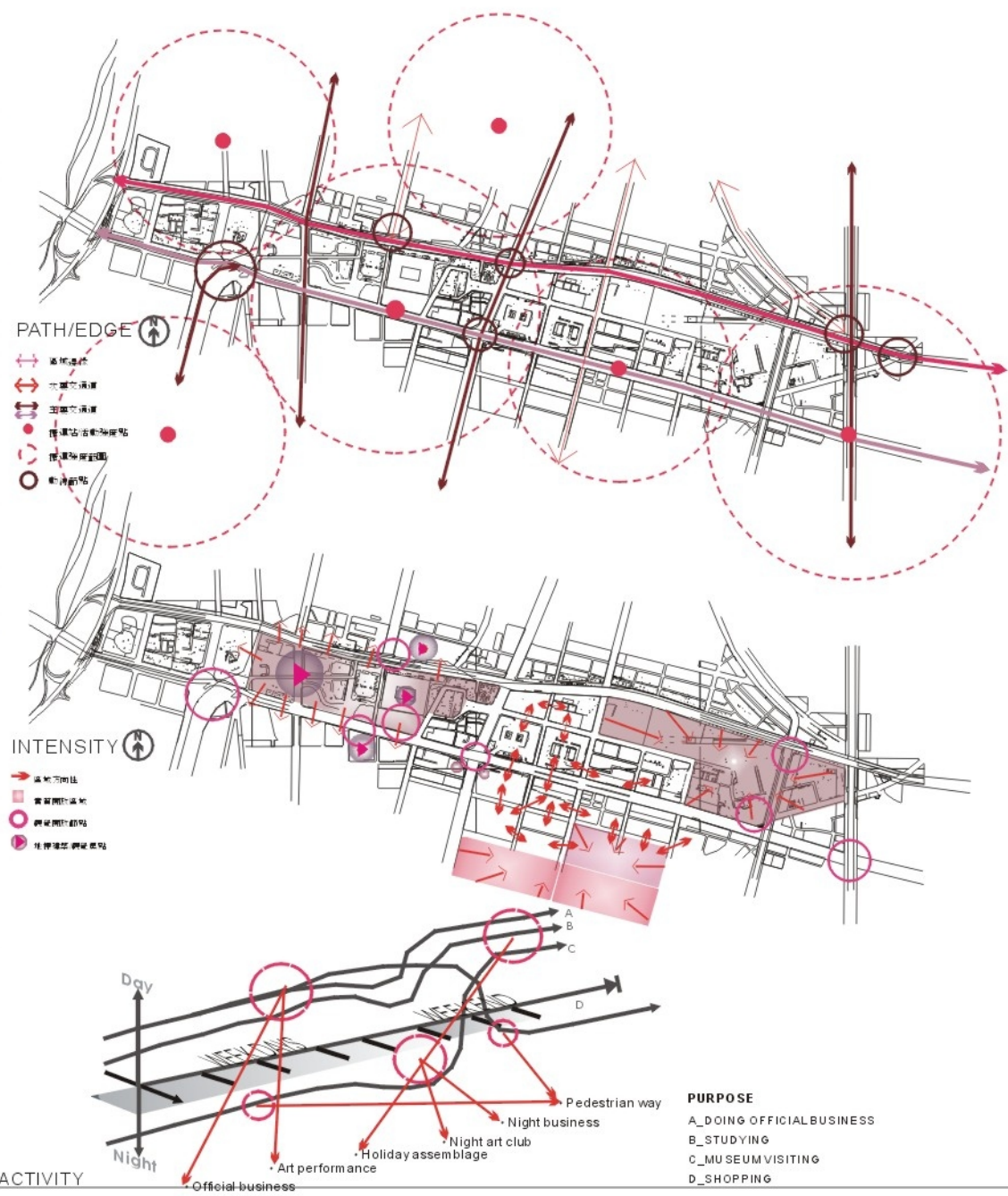
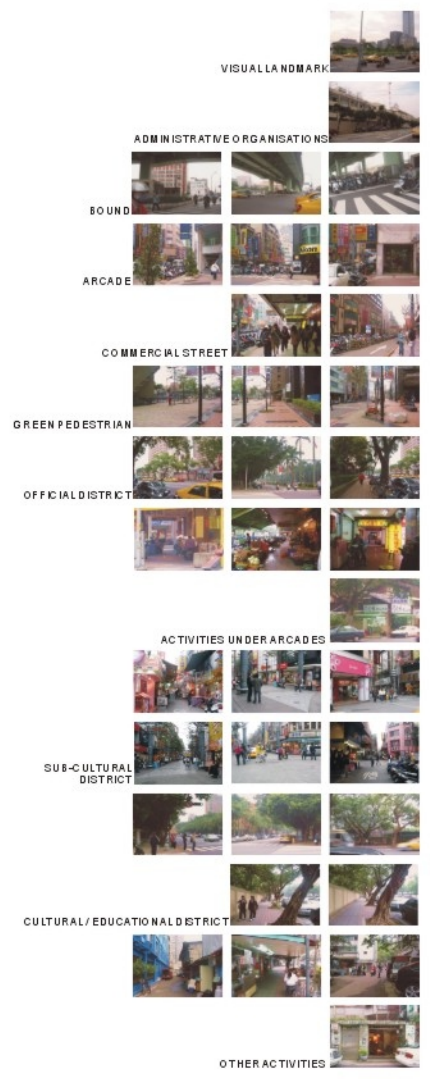


CONTRIBUTION OF DISTRICT



/ PROGRAM /

In the neighbourhood we can categorize four groups of activity-people for official business, for school studying, for museum visiting and for shopping at day and night. But most of all, the importance of this zone comes from the its location-between the transport core and the central art part, which defines the main mission to connect these two different districts as a pedestrian way for citizens. Thus, I program two kinds of prototype to contain the four groups of activity-the street type for public using and the modular building type for official business using.



Continuum of:

Shop
open plaza
pedestrian way

/ CONCEPT /

The main concept here is to keep the diversity of activity in this complex site , and further more, to continue the perception of identity and originality for local people.

A mixed use civic street

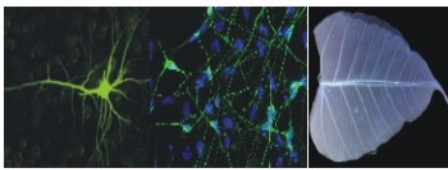
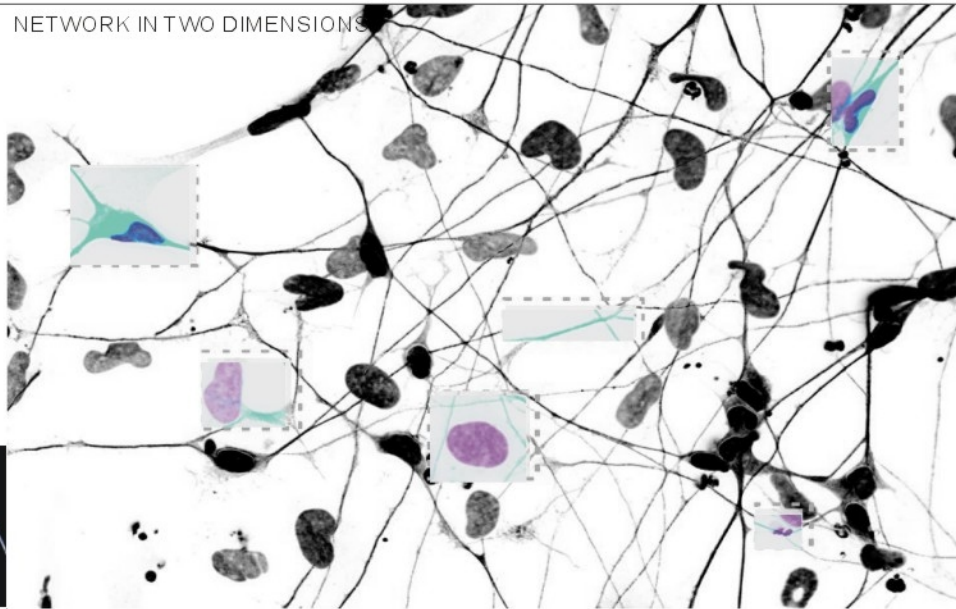
/ ISSUE /

- Co-exist of hybrid-portotype of programs
 - Flexibility of plaza in high density zone
 - Composition of main axis and street image
 - Connection of urban nodes and green belt
 - Percept of city by urban cracks
- [+1_bridg/metro] [+0_ground] [-1_subway/ shopping street]



spaces
rooms
voids
terraces
roof gardens
patios

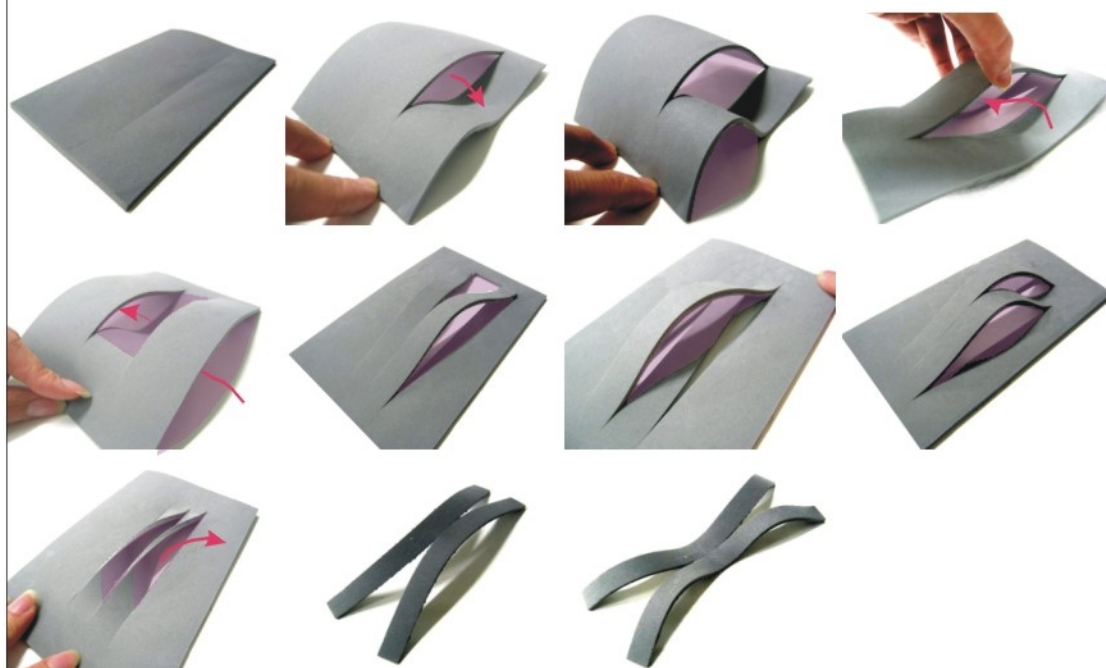
NETWORK IN TWO DIMENSIONS



NEURAL NETWORK

/ METAPHOR /

Inspired by the prototype of neural network, I transform the two dimensional network mapping into a three dimensional network model. In fact, the real city was cut by several layers of circulation. The higher cities were developed, the more deeply circulations get interlaced. Due to that, the model of a civil street prototype is meant to reconnect the circulation and activities of pedestrians into a continuous network to create a whole new ground.

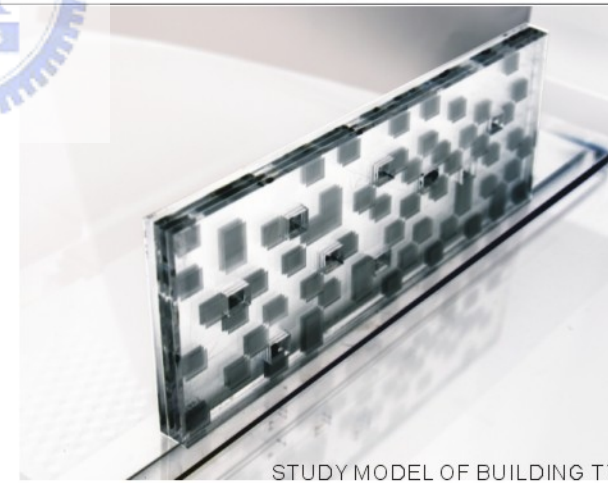


NETWORK IN THREE DIMENSIONS

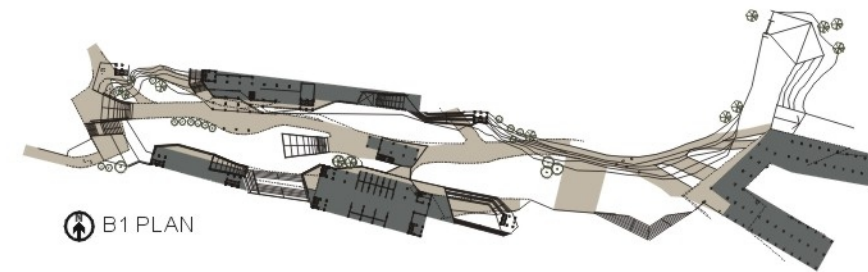
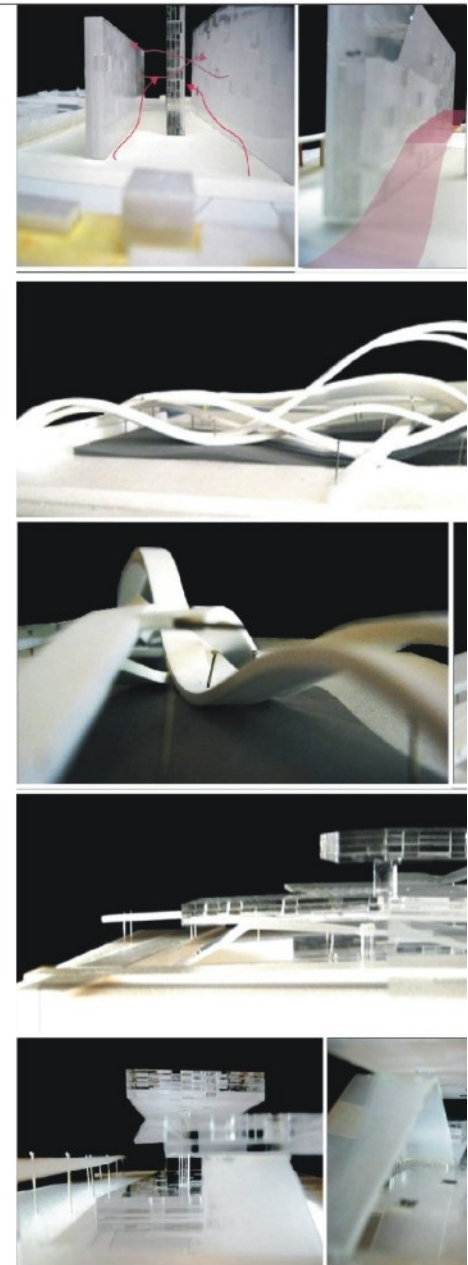


/DYNAMIC FACADE/

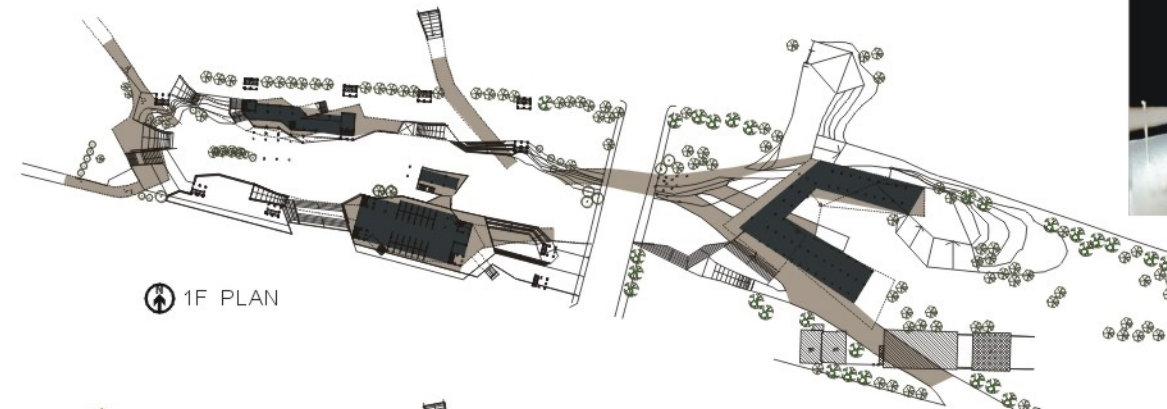
By combining all the offices into one organization, the plural and alterable variation of each elevation, as called dynamic facade causing by various activities presenting on the openings, is syntonic with the internally ideological manifold of this city.



STUDY MODEL OF BUILDING TYPE



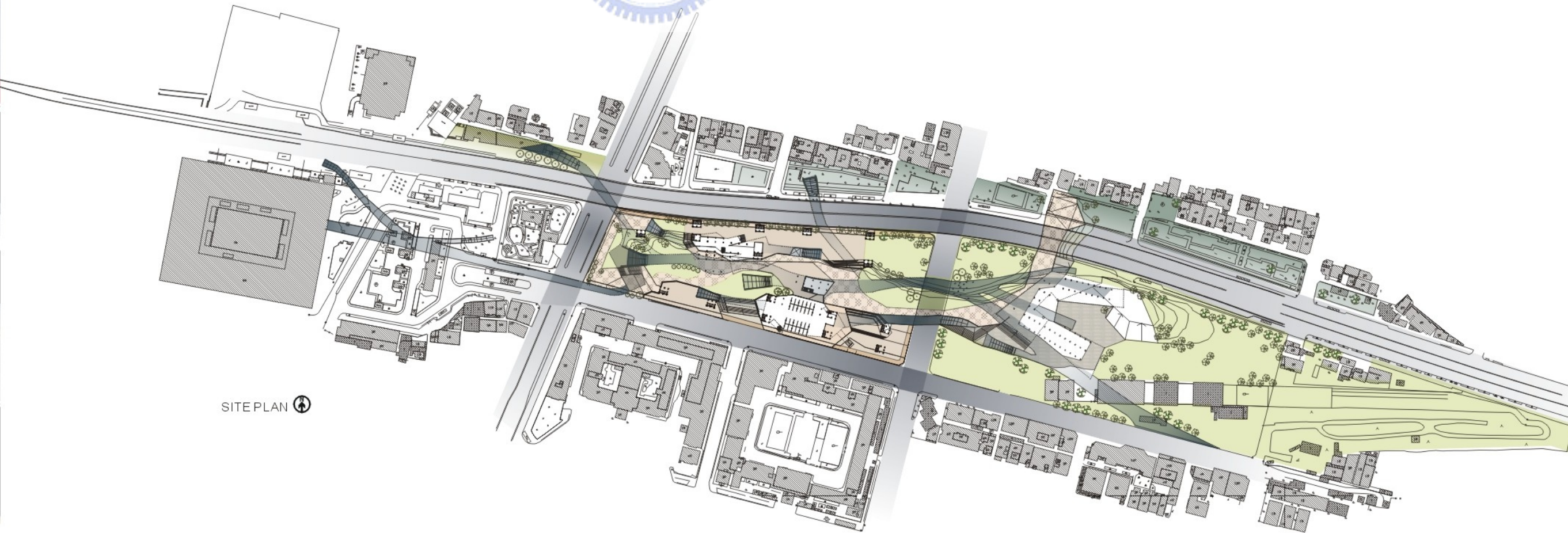
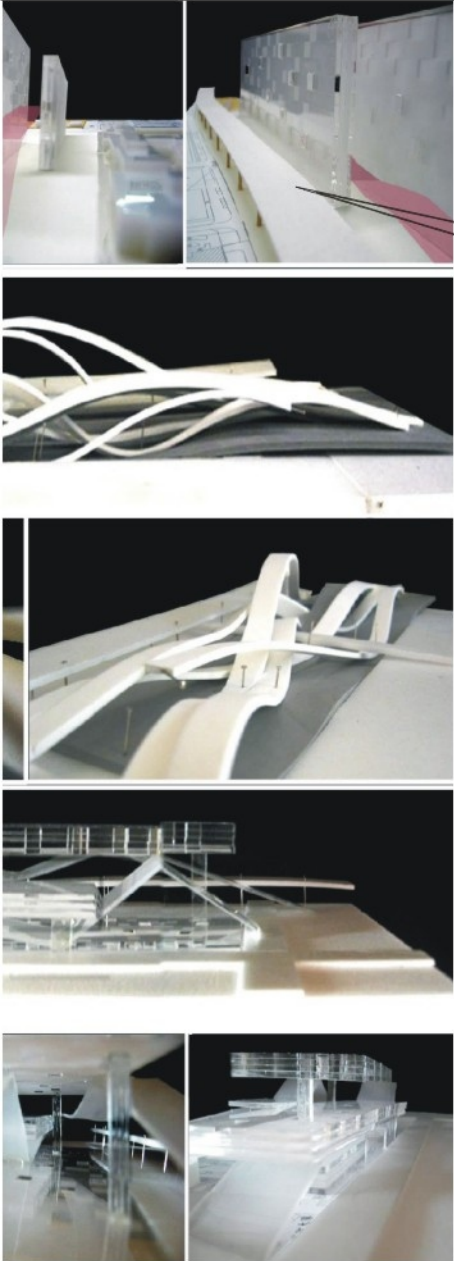
B1 PLAN



1F PLAN



2F PLAN



PERSPECTIVE VIEW OF INNER CIVIL STREET FROM LINSEN ROAD

