

Chapter4

A mode composed in a group that was embedded to the living condition.

The entrance planning of TADA center in Taichung, 2006.

植入式的群構地景

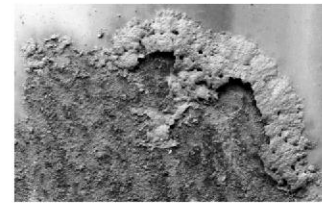
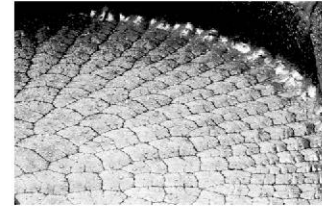
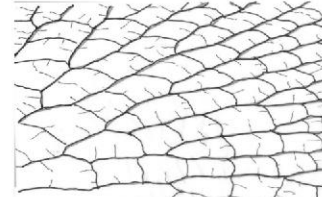
台中酒場藝術展演中心入口改造計畫

此設計主要是建立依據系統性意義的群構地景模式，植入基地的涵構中，並與基地現況連結，而產生新的空間紋理上的秩序。

詮釋轉化經三種自然能量：光、水、風的生成現象，以圖像分析，發展建構的可能性。再由潛在的空間趨象再次轉化結合現有的空間模式，賦予其空間層次上的多樣，從而完成環境上的地景與行為秩序。

55

56



In this project we try to found out a landscape mode that is composed in a group. And it also stands on the systemic meaning. By this way, we find some orders between the pattern and the living conditions. After that we embed the behavior into the site conditions and regulated the possibility of programs. Therefore, a new order was represented in the spatial construct.



Chapter4

A mode composed in a group that was embedded to the living condition.

57

58

Site analysis:

基地概略:

基地位處主要幹道，南接商業區東臨住宅區。

基地:台中酒廠藝術展演中心入口

1. 基地全區配置/設計範圍
2. 設計範圍斷面圖
3. 西向立面商業
4. 南向立面住宅



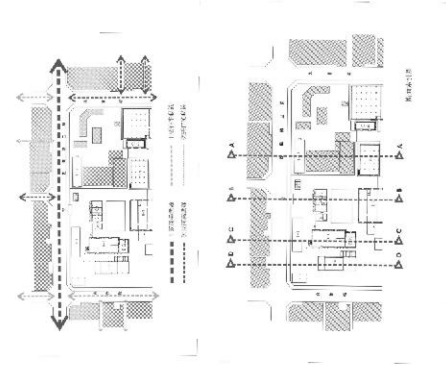
The crossroads in southwest



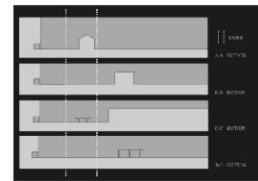
Site image



1. Site plan-main area of design



2. Sections of the design area



3. Western elevation (business park)



4. Southern elevation (housing area)



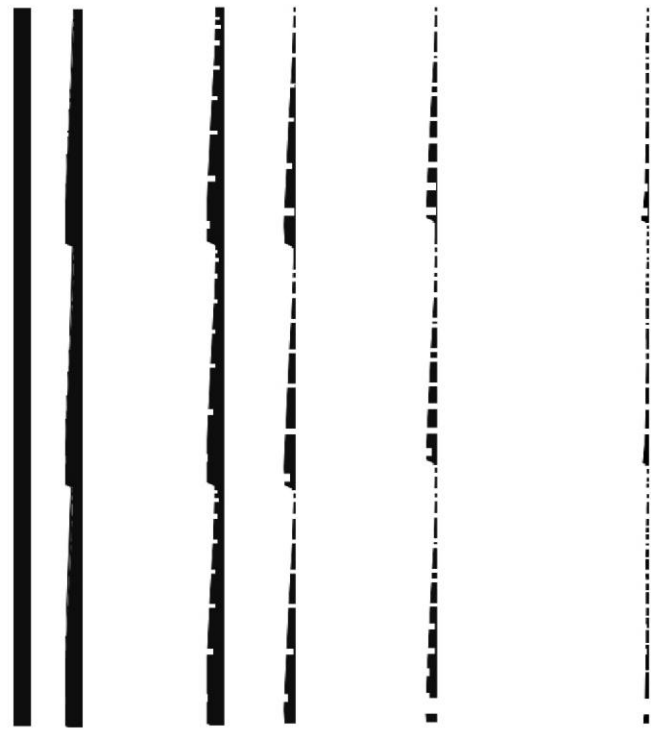
Chapter 4

A mode composed in a group that was embedded to the living condition.

59

60

Pattern analysis:



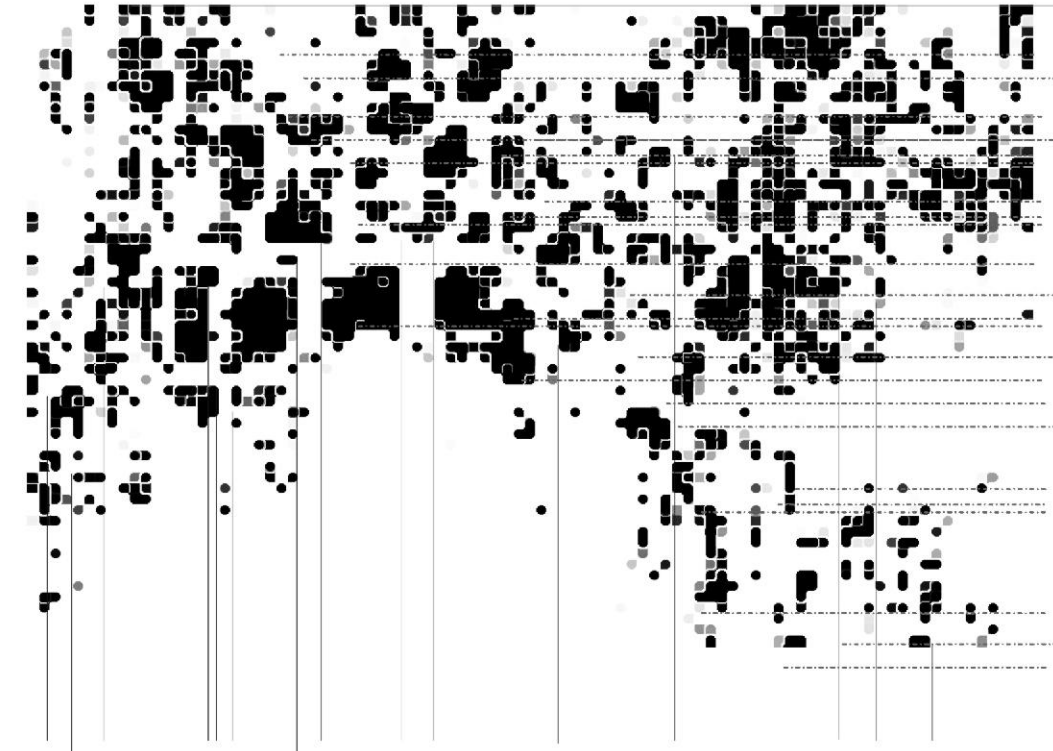
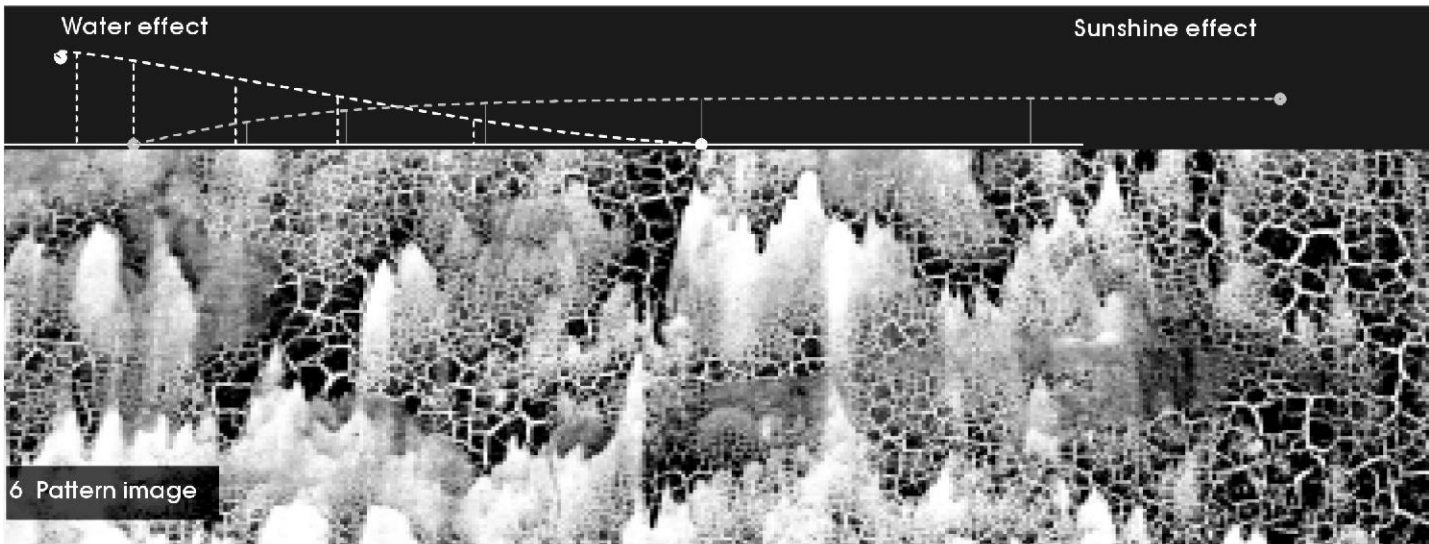
5. Process of the natural actions in patterns

白水泥牆上覆蓋黑色瀝青類的物質，經雨水的一次沖刷，再經日曬，龜裂成有機的形狀堆積/侵蝕兩外力交替作用，加上現黑白漸層的水文，呈現群聚狀的，有層級的組織紋理。用有機的圖像轉換成幾何式的抽象架構，發現橫向密度高於垂直向的密度，將其對應到基地的主次要動線系統。

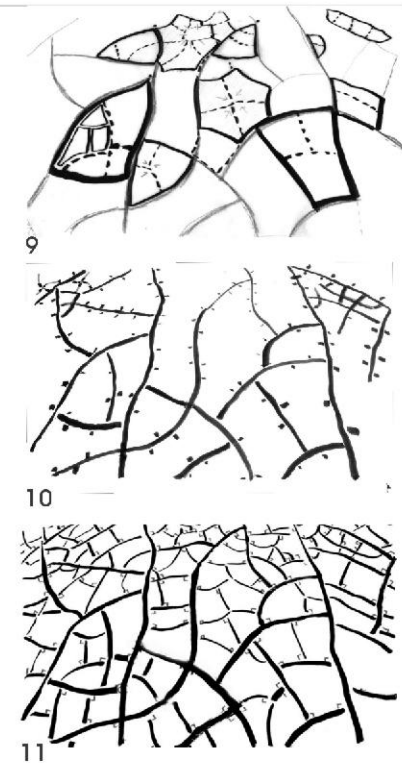
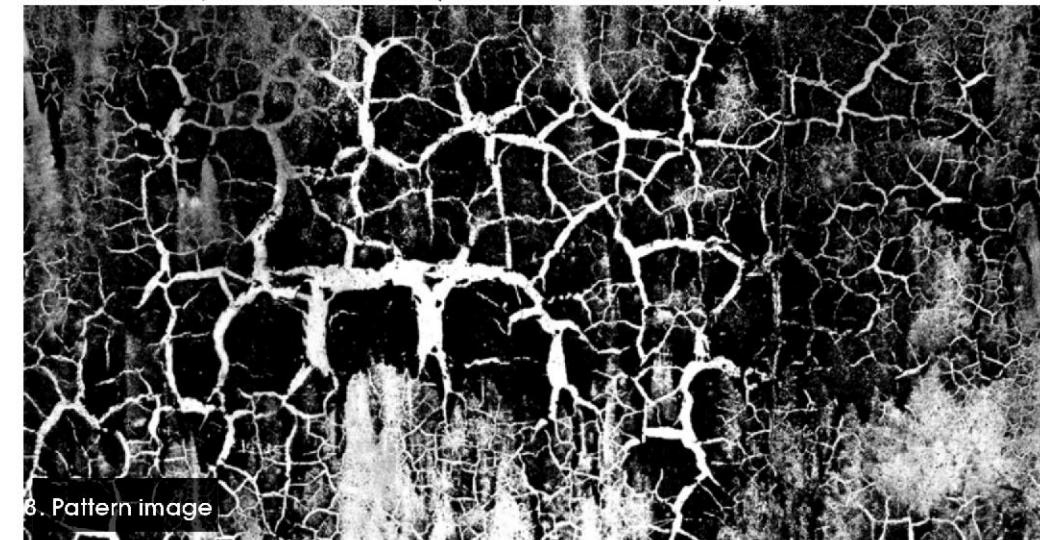
- 5. 紋理分析：經雨水和日照的風化過程
- 9. 紋理分析：組織方式皆90度分裂
- 10. 破碎分析：區域性的群組分裂



Pattern in a wall



7. Transform the pattern into geometry
Different density with two directions (redefine the circulation)



- 9. Analysis -pattern with right
- 10. Analysis pattern in a group
- 11. Analysis -outline the pattern



Chapter4

A mode composed in a group that was embedded to the living condition.

61

62

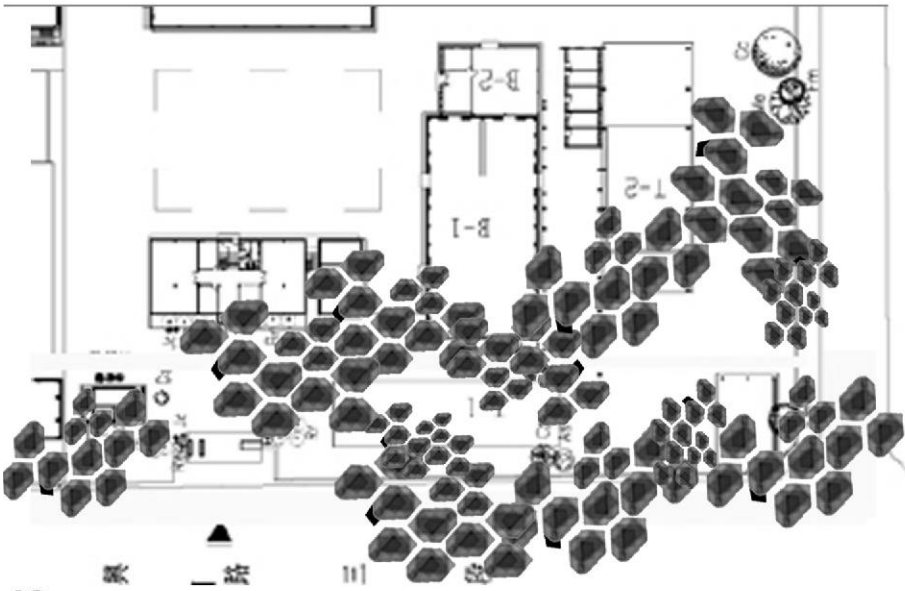
Landforms analysis:

分析自然紋理的生成過程，對應到街廓的邊界空間，衍生出滲透式的高密度動線。

12. 群組化的幾何物件

13. 下挖的地平線規劃出不同活動場域，一種隱沒在都市中的滯留空間。

17. 三米深的下挖動作 創造一個中介的活動廣場，連通到主要的動線上。



12



13



14



15



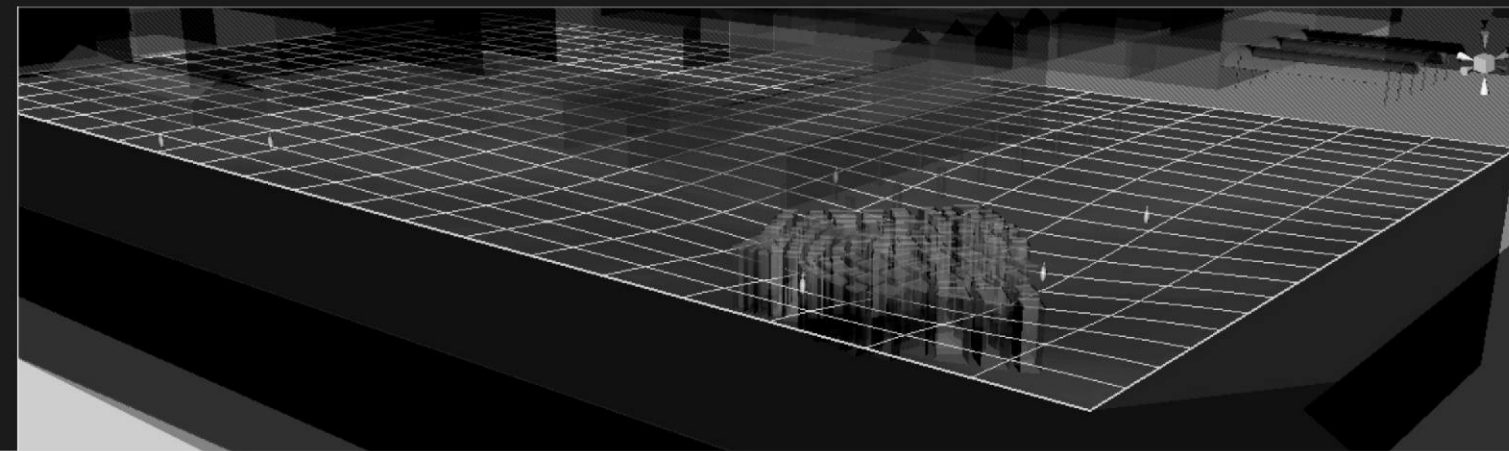
16. Whole area image

17. central area

. Horizontal

. The top of the structures

. Structures with the landform



Chapter4

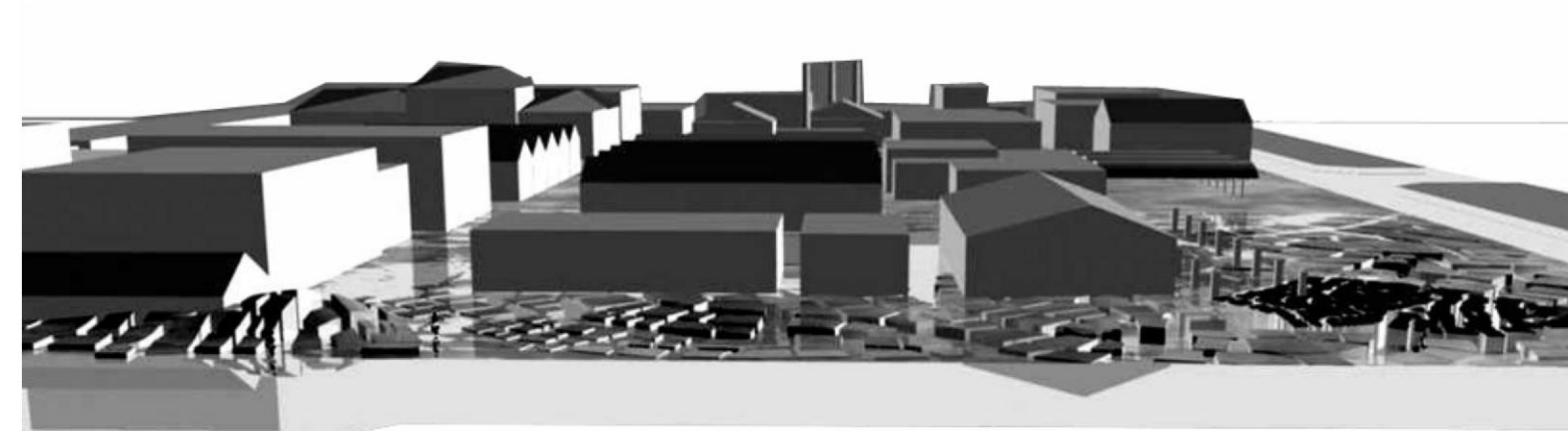
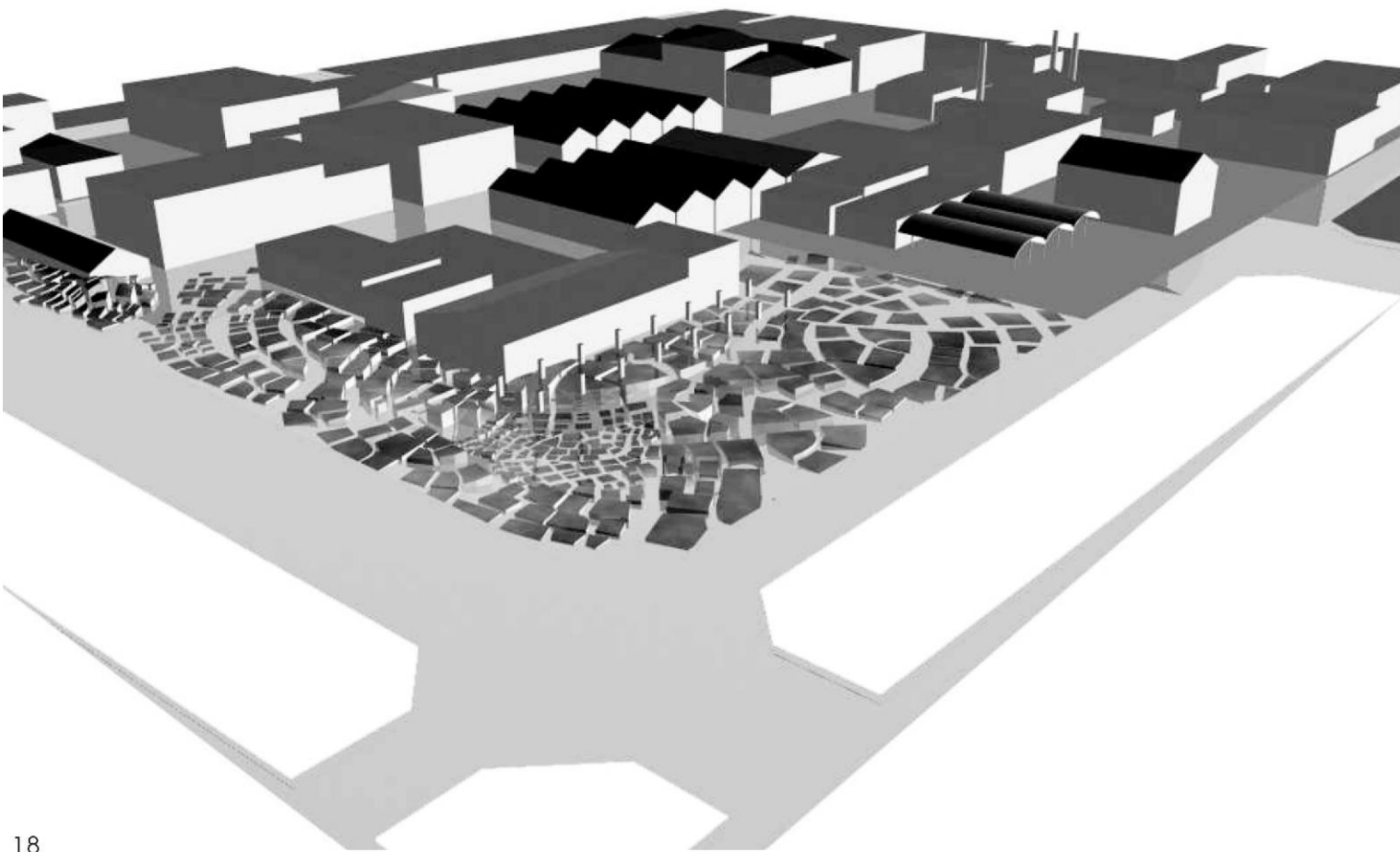
A mode composed in a group that was embedded to the living condition.

Final produce:

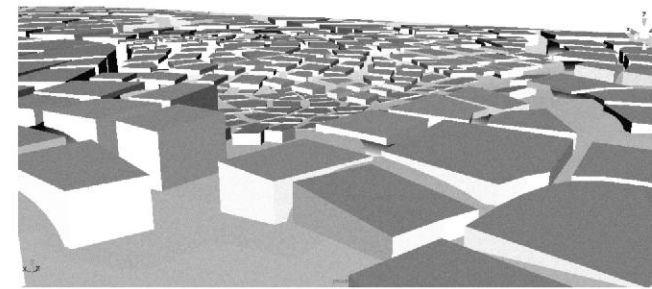
Fig.全區圖

19. 入口處高低層次的量體，是為引喻區域界線，和設置街道家具，同時保有視線的穿透性。

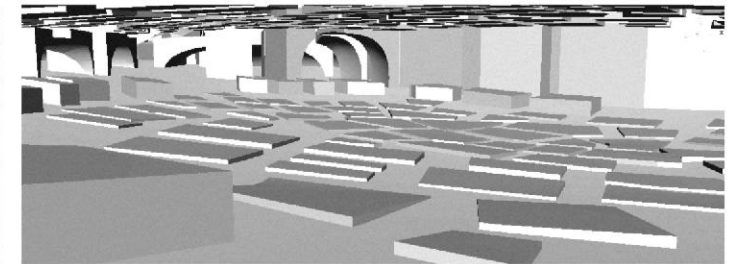
21. 鄰接廣場旁的虛量體，以群聚式的組織，創造內部的遮蔽空間。



19



20



21

