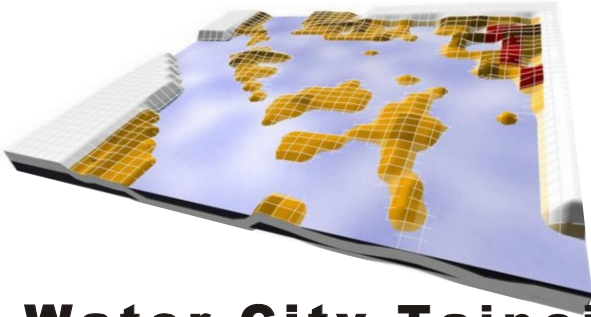


Case_B



Water City-Taipei

水 都 台 北

人類一次又一次深陷在自己所創造的災難，越是顯現脆弱。人類將自己賴以生存的環境破壞的滿目瘡痍，自然資源也面臨消耗殆盡，對於永續環境的呼聲日益強烈；然而，與水失序的關係，究竟會為人類未來的命運演奏出什麼變調的樂章呢？

被壓榨後的環境造成水循環失序，而產生的自我治癒行為卻引來人類的不斷在破壞，形成惡性循環，以台北社子島一帶為例，提出水都台北的狂想。



CONCEPT

HISTORY

INDUSTRY OF WATER



RIVER TRANSPORT



NOWDAYS

INDUSTRY OF 7-11



+

FLOOD



=

MOBILE 7-11

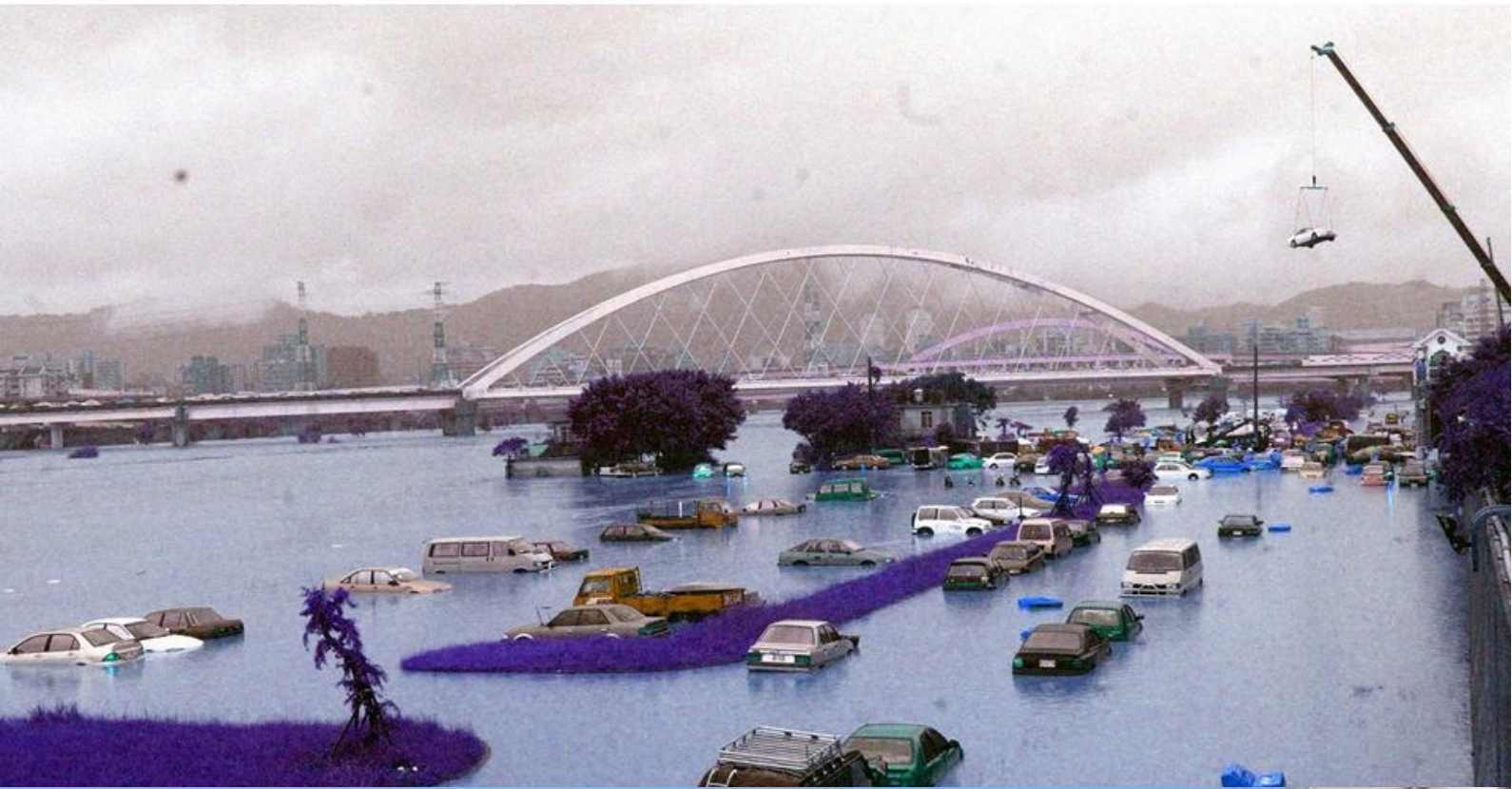




OCCUPATION OF 7-11 IN THE CITY



HISTORY + NOWDAYS + FLOOD = MOBILE 7-11

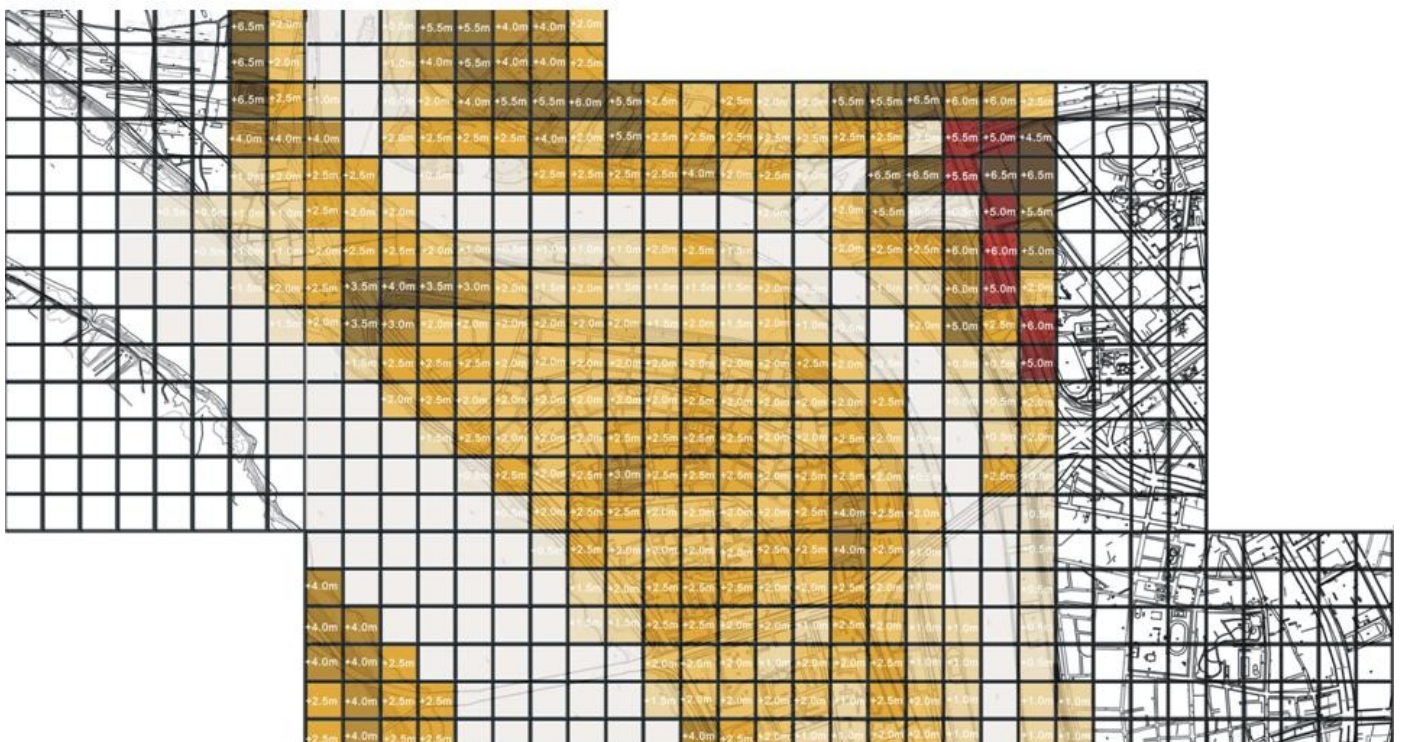


HISTORY + NOWDAYS + FLOOD = MOBILE 7-11



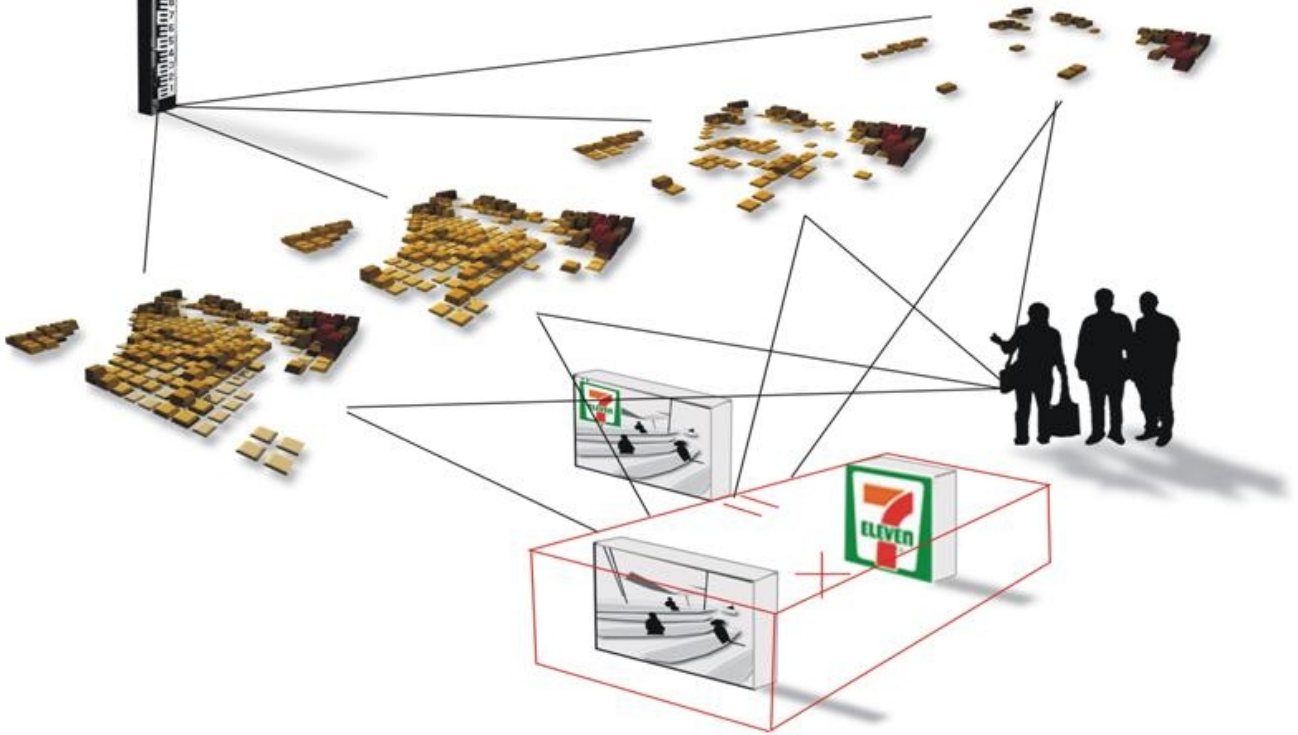


THE MAP OF 7-11 IN THE SHETZ ISLAND

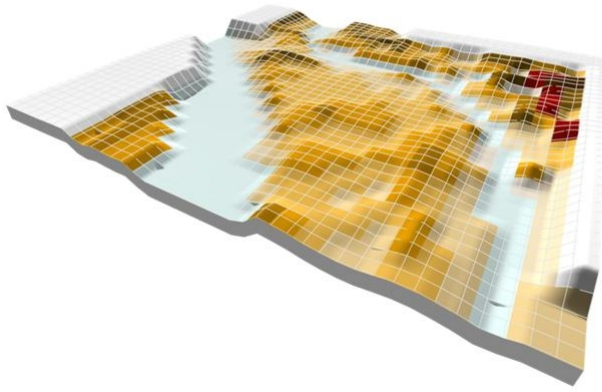


THE MAP OF 7-11 IN THE SHETZ ISLAND

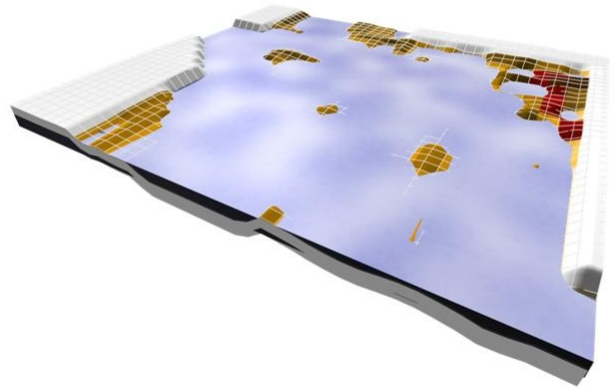
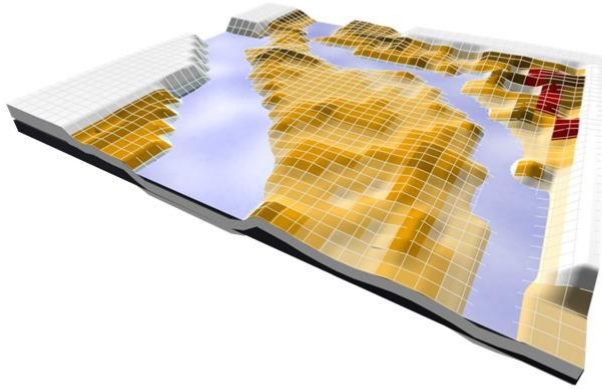
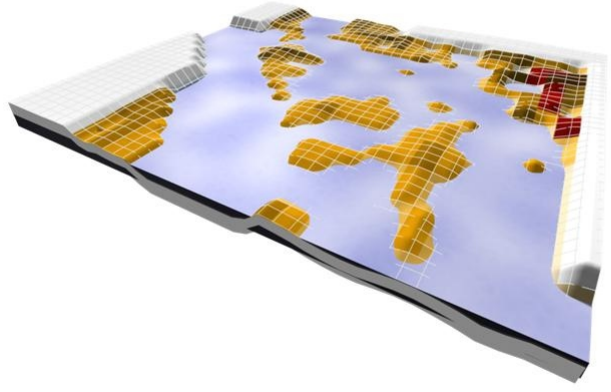
Strategy



THE MAP OF 7-11 IN THE SHETZ ISLAND



5



HISTORY + NOWADAYS + FLOOD = MOBILE 7-11



THE MAP OF 7-11 IN THE SHETZ ISLAND