

(簡) snapshot

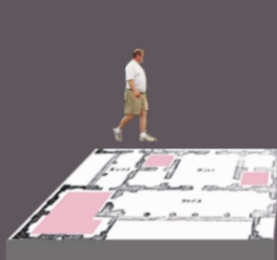
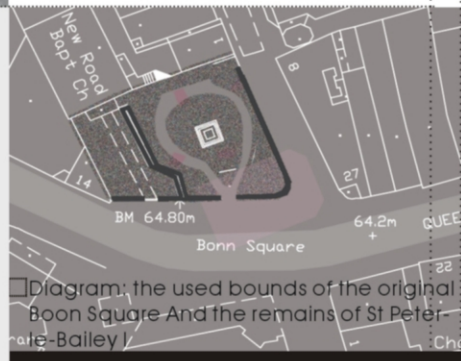
#### DESIGN CONCEPT

In the redesign project, the Bonn Square itself is considered in the way of not separating remains from people for protection but emphasizing its expression of historic atmosphere moreover. For regarded the church St. Peter-le-Bailey as an important mark in history and element of the formation of space around the church, we transform the plan and images of the church into a main feature on this site to represent the importance of its significance of existence.

By reproducing the visual space of the historical environment of the past as the main design concept, people will be able to experience the atmosphere of the historical







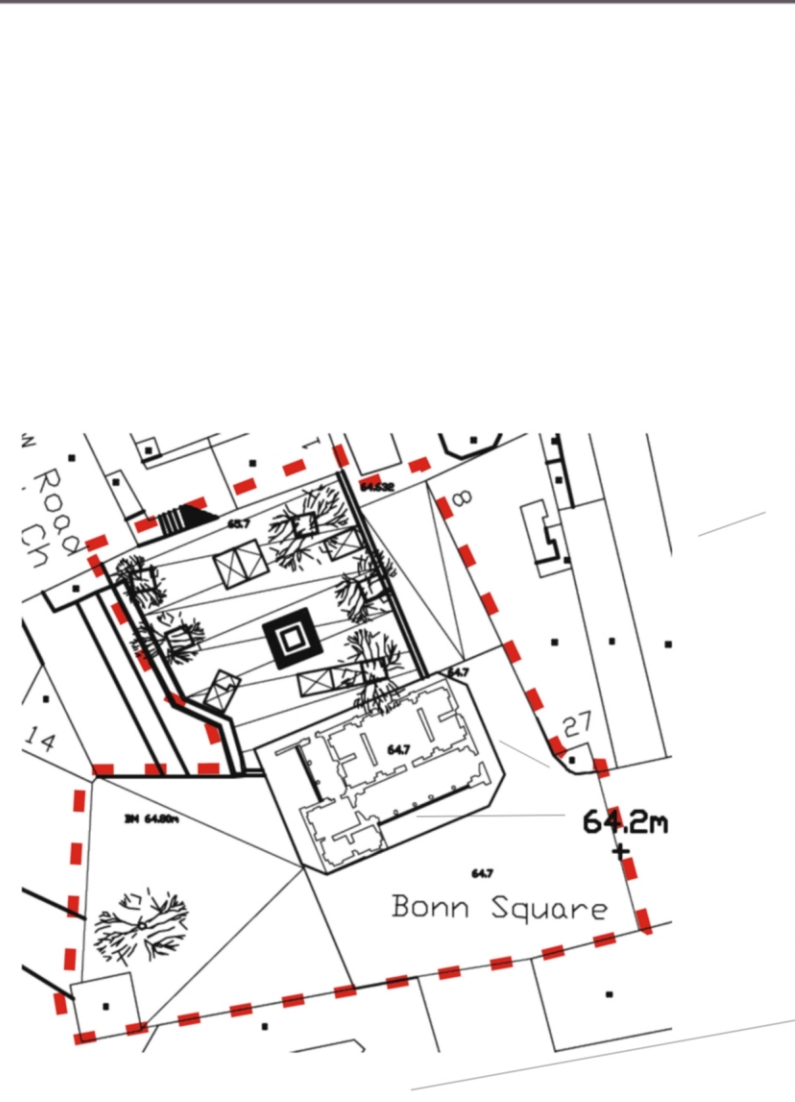
Slower superimposed images projected on semitransparent wall



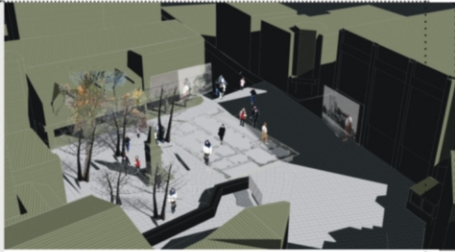
Diagram: Passing sensible block



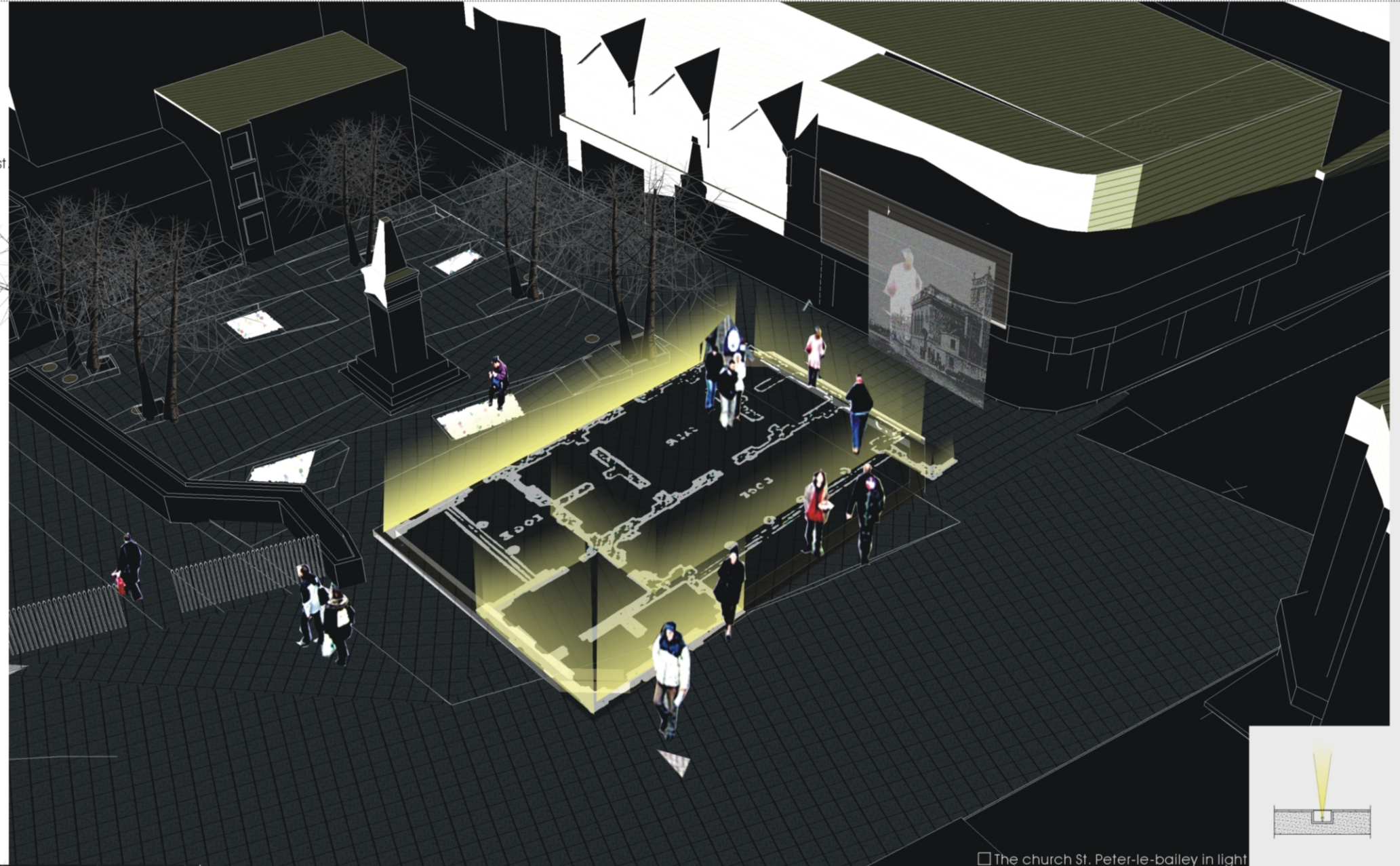
Delivery between sensors and the projector



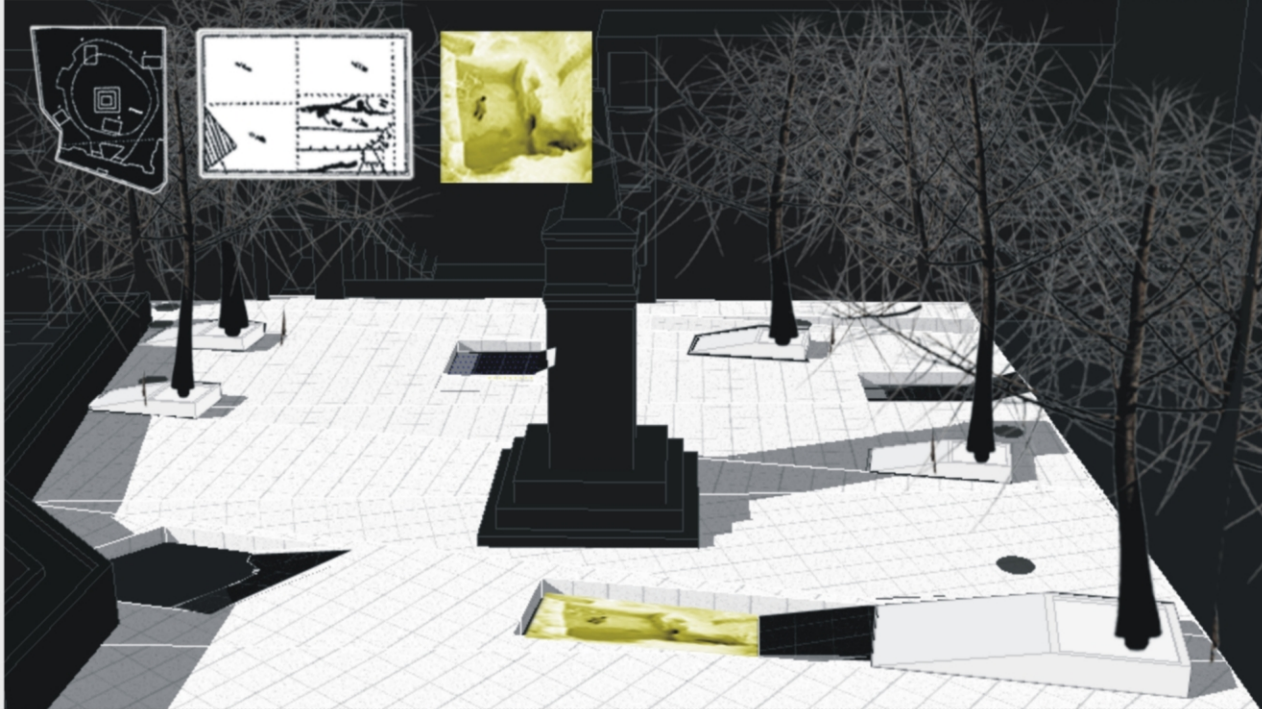
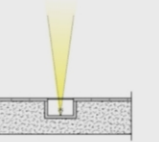




Visual and historical connection present and past



The church St. Peter-le-bailey in light



Transform feature of buried archaeology into street furniture

