



About the continuity of the **urban context**

# 台北光華商場特區規劃

## THE PLAN OF GUANG-HUA BUSINESS PARK IN TAIPEI



曾經台北盆地是水道縱橫的地方。從淡水河沿岸開始建立聚落，之後清朝建立台北城，日治時期(1895-1945)開始有規模的都市計劃和擴張，到光復後這一連串的發展。但使人們和河的關係疏離了，各種路和橋的興建，連結地域的同時，場也不斷的切割都市的空間。然而，光華商場附近的這塊基地，即是各種商業活動的基地。然而，這塊基地的電子商區，也逐步規畫為文藝和創新的基地。因此，如何重新整合這一層各塊的紋理，來重新連結周圍的居住、居住和公園。最重要的企圖。



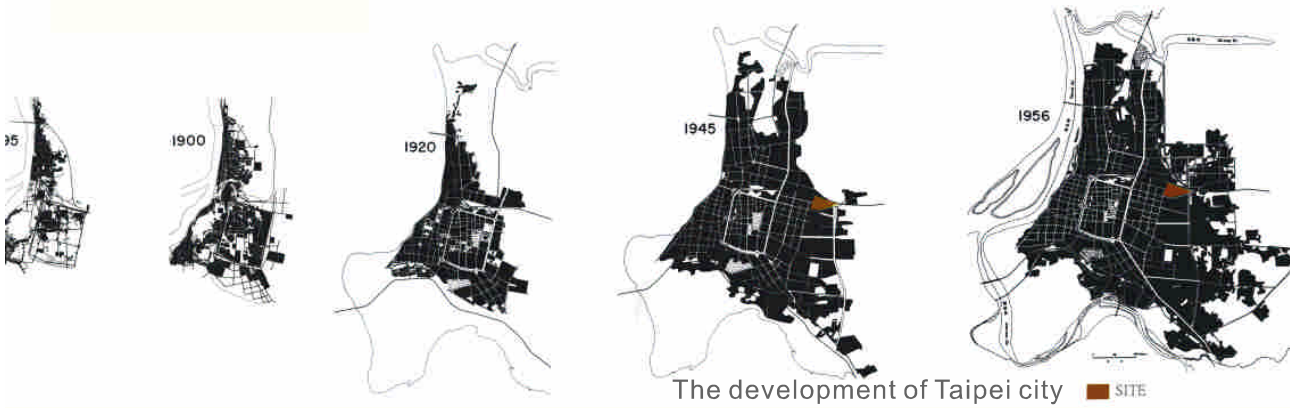
The map of 1900

### Different influences in the site

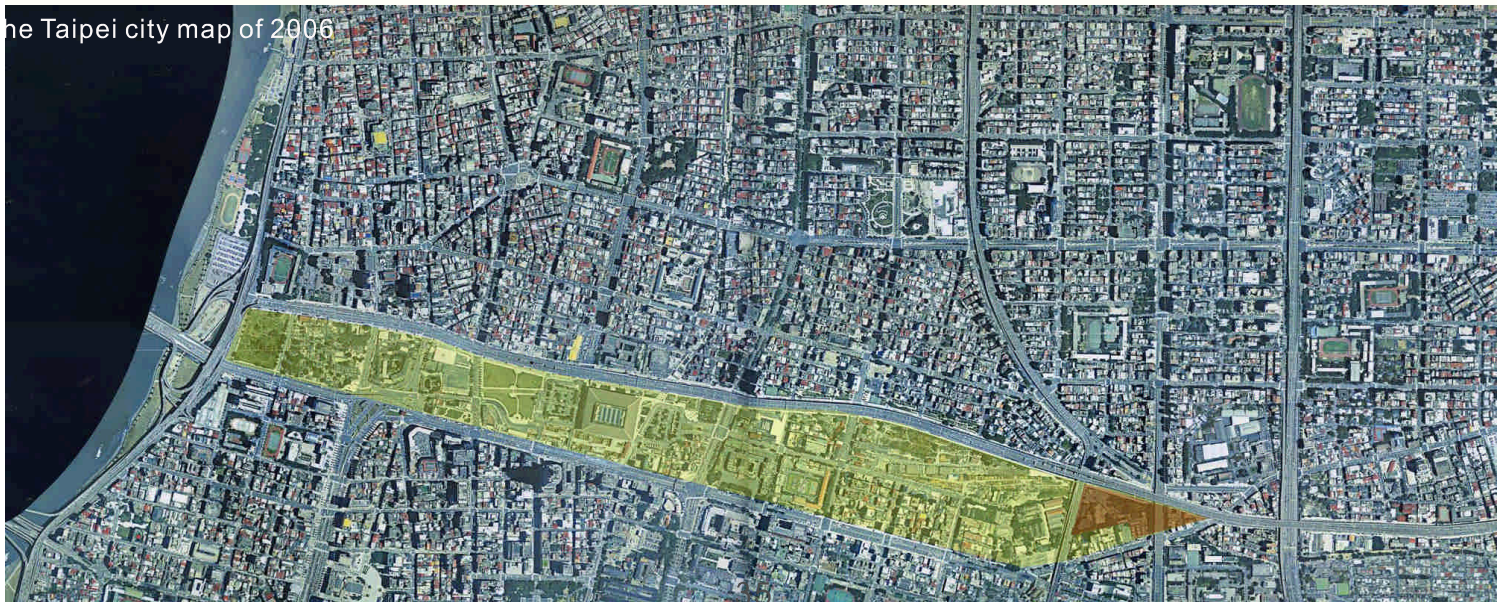
- River
- Railway
- Road
- Overpass



Taipei city was full of rivers in the past. With the rapid growth of urbanization, some rivers had been disappeared, but some flowing waters are still under the ground. Some culture and business parks surround the site. The design concept is uncovering layers of urban context to connect the past and the future.



The development of Taipei city

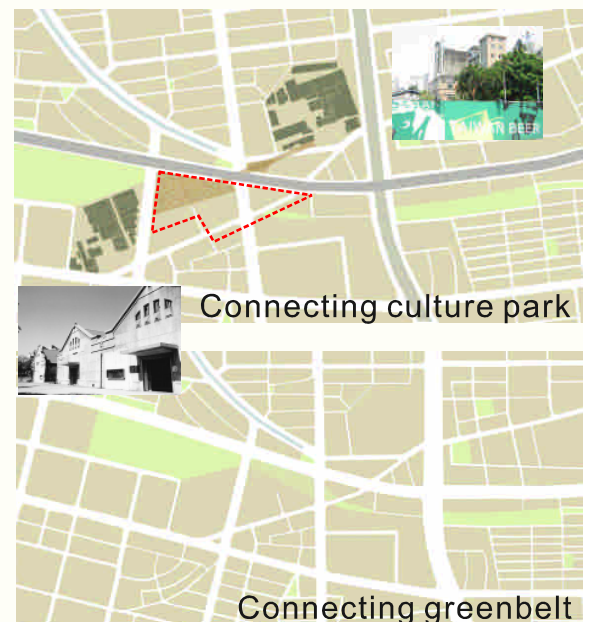


The Taipei city map of 2006



Uncovering the layers of the urban context

Following the disappeared rivers to connect the urban context



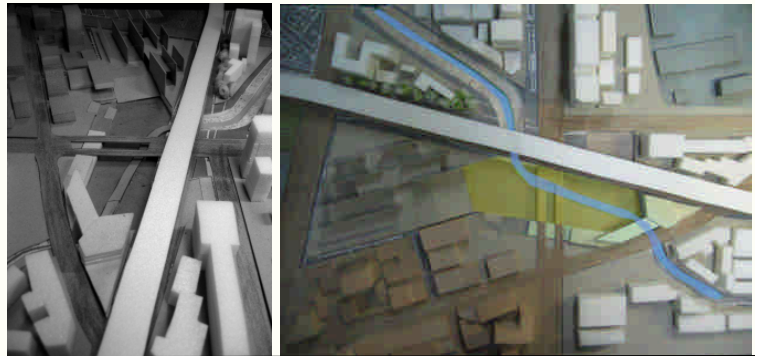
Connecting culture park

Connecting greenbelt

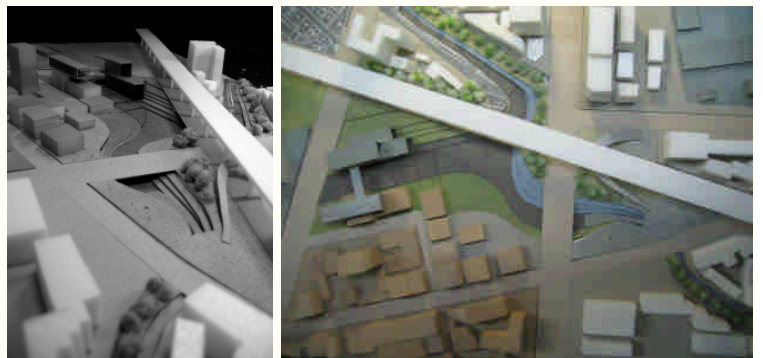


# The process of connecting the urban context

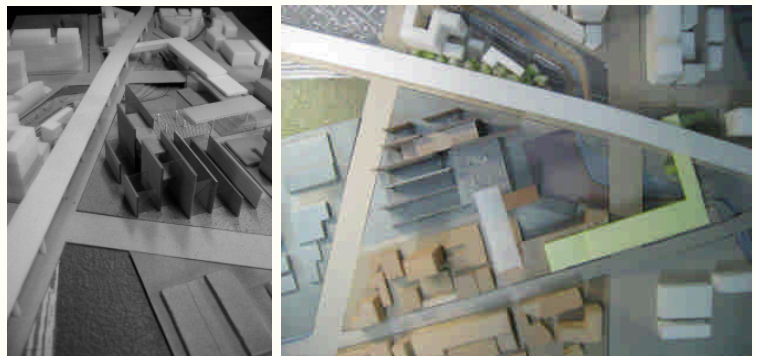
Opening the flowing water under the ground



The water becomes the main factor



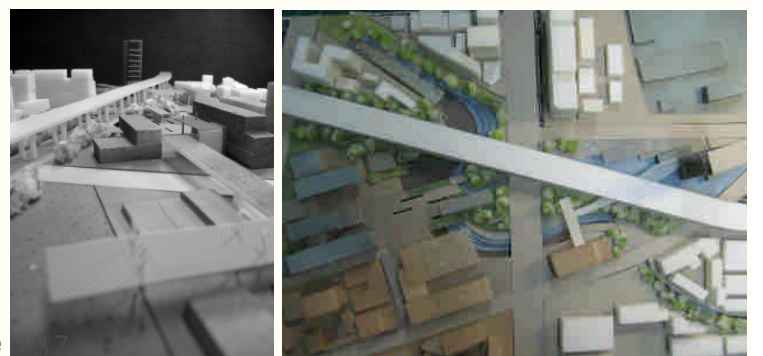
Following and connecting the urban context



The greenbelt meets the water



The urban context says the past and the future







## The vision of Guang-Huabusiness park in 2015

