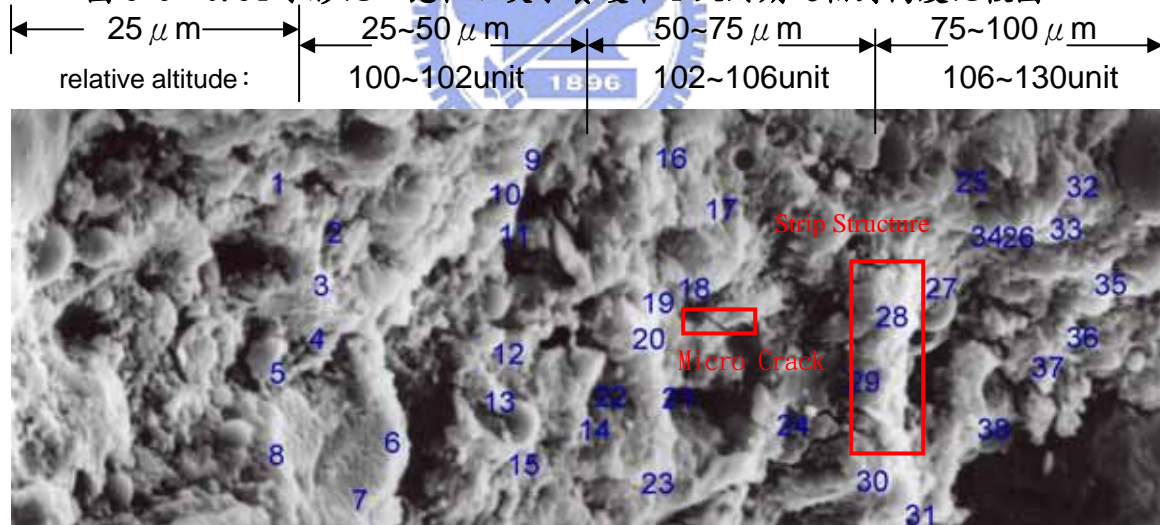


relative altitude : (the altitude of point 1 is 100 unit)

pt.1: 100.000	pt.10: 95.884	pt.19: 98.625	pt.28: 98.310	pt.37: 100.749
pt.2: 101.129	pt.11: 98.290	pt.20: 101.504	pt.29: 101.916	pt.38: 101.262
pt.3: 98.342	pt.12: 94.376	pt.21: 100.544	pt.30: 97.702	
pt.4: 98.307	pt.13: 95.776	pt.22: 99.971	pt.31: 97.606	
pt.5: 99.177	pt.14: 96.989	pt.23: 103.558	pt.32: 98.609	
pt.6: 100.260	pt.15: 96.863	pt.24: 101.224	pt.33: 104.394	
pt.7: 100.000	pt.16: 98.177	pt.25: 99.566	pt.34: 100.840	
pt.8: 94.925	pt.17: 99.724	pt.26: 100.430	pt.35: 102.591	
pt.9: 99.869	pt.18: 97.272	pt.27: 100.658	pt.36: 100.991	

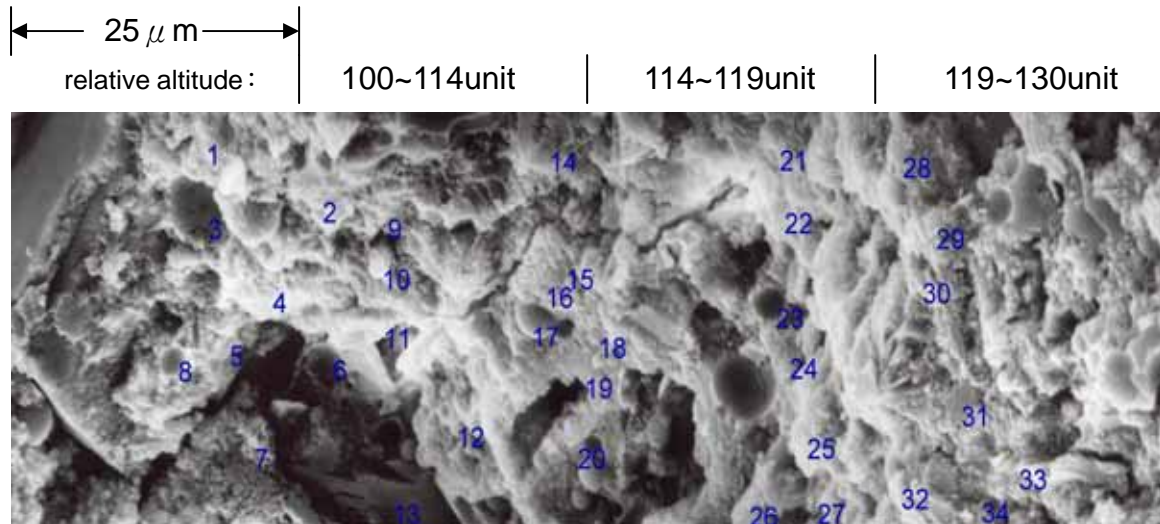
圖 5-8 0.54 水膠比，飽和石灰水養護下 1 天齡期之相對高度比較圖



relative altitude : (the altitude of point 1 is 100 unit)

pt.1: 100.000	pt.9: 99.631	pt.17: 103.371	pt.24: 115.770	pt.32: 124.164
pt.2: 100.369	pt.10: 100.621	pt.18: 102.282	pt.25: 118.491	pt.33: 124.292
pt.3: 100.436	pt.11: 100.235	pt.19: 103.371	pt.26: 125.563	pt.34: 125.563
pt.4: 100.669	pt.12: 99.382	pt.20: 103.872	pt.27: 119.922	pt.35: 127.901
pt.5: 99.732	pt.13: 101.525	pt.21: 103.586	pt.28: 112.652	pt.36: 129.043
pt.6: 101.525	pt.14: 103.552	pt.22: 103.552	pt.29: 112.112	pt.37: 127.025
pt.7: 102.077	pt.15: 100.447	pt.23: 106.236	pt.30: 111.912	pt.38: 130.792
pt.8: 100.536	pt.16: 101.281		pt.31: 118.127	

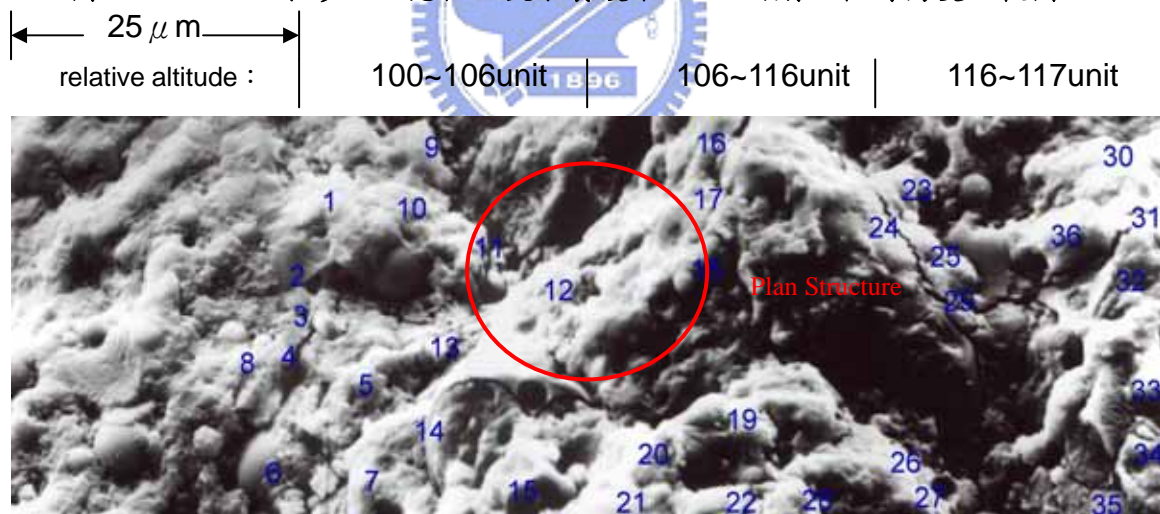
圖 5-9 0.54 水膠比，飽和石灰水養護下 7 天齡期之相對高度比較圖



relative altitude : (the altitude of point 1 is 100 unit)

pt.1 : 100.000	pt.10 : 106.386	pt.14 : 113.274	pt.21 : 113.672	pt.30 : 125.103
pt.2 : 105.043	pt.11 : 107.749	pt.15 : 116.192	pt.22 : 114.348	pt.31 : 126.432
pt.3 : 101.322	pt.12 : 114.483	pt.16 : 114.662	pt.23 : 110.048	pt.32 : 124.398
pt.4 : 101.322	pt.13 : 112.068	pt.17 : 115.608	pt.24 : 119.973	pt.33 : 130.311
pt.5 : 100.096		pt.18 : 119.298	pt.25 : 125.394	pt.34 : 127.114
pt.6 : 105.515		pt.19 : 117.399	pt.26 : 125.448	
pt.7 : 101.785		pt.20 : 116.827	pt.27 : 127.628	
pt.8 : 100.000			pt.28 : 126.831	
pt.9 : 106.109			pt.29 : 126.088	

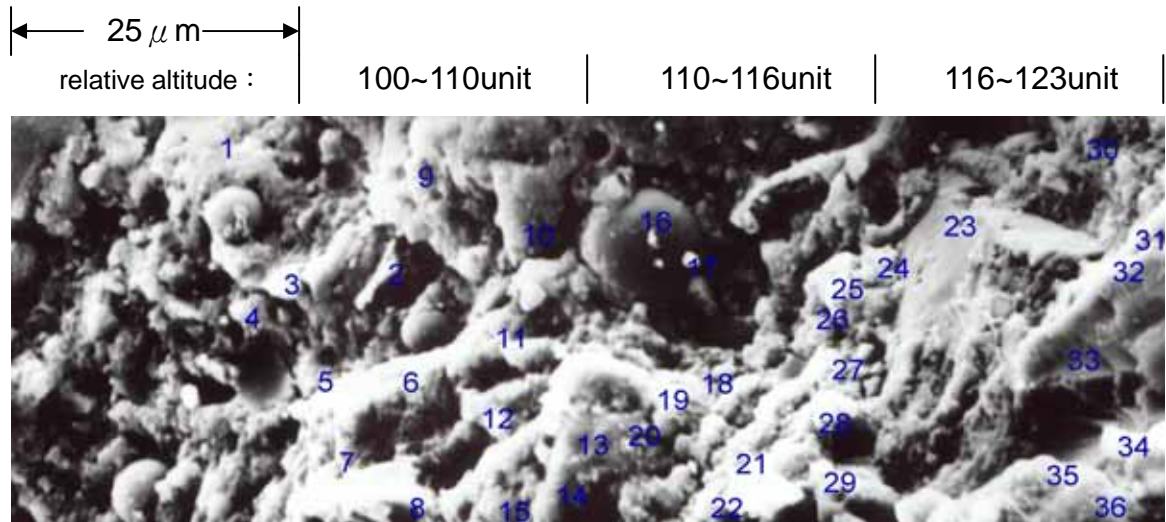
圖 5-10 0.54 水膠比，飽和石灰水養護下 14 天齡期之相對高度比較圖



relative altitude : (the altitude of point 1 is 100 unit)

pt.1 : 100.000	pt. 9 : 101.573	pt.16 : 97.672	pt.24 : 115.005	pt.30 : 117.492
pt.2 : 100.419	pt.10 : 102.841	pt.17 : 102.498	pt.25 : 116.798	pt.31 : 117.227
pt.3 : 100.252	pt.11 : 103.842	pt.18 : 105.862	pt.26 : 115.645	pt.32 : 114.013
pt.4 : 100.586	pt.12 : 106.735	pt.19 : 119.595	pt.27 : 116.327	pt.33 : 116.748
pt.5 : 102.985	pt.13 : 103.890	pt.20 : 114.615	pt.28 : 113.647	pt.34 : 114.681
pt.6 : 101.166	pt.14 : 103.272	pt.21 : 115.475	pt.29 : 116.641	pt.35 : 113.563
pt.7 : 104.277	pt.15 : 105.744	pt.22 : 111.065		pt.36 : 115.122
pt.8 : 101.166		pt.23 : 111.222		

圖 5-11 0.54 水膠比，飽和石灰水養護下 28 天齡期之相對高度比較圖



relative altitude : (the altitude of point 1 is 100 unit)

pt.1: 100.000	pt.10: 106.118	pt.19: 111.554	pt.28: 115.210	pt.30: 120.461
pt.2: 106.568	pt.11: 107.633	pt.20: 120.015	pt.29: 116.517	pt.31: 123.894
pt.3: 103.353	pt.12: 109.408	pt.21: 115.257		pt.32: 122.377
pt.4: 103.396	pt.13: 112.015	pt.22: 114.063		pt.33: 120.642
pt.5: 104.757	pt.14: 110.872	pt.23: 120.912		pt.34: 123.119
pt.6: 106.568	pt.15: 109.533	pt.24: 114.879		pt.35: 121.136
pt.7: 106.850	pt.16: 108.795	pt.25: 113.727		pt.36: 121.583
pt.8: 110.030	pt.17: 110.578	pt.26: 114.783		
pt.9: 105.343	pt.18: 112.637	pt.27: 115.445		

圖 5-12 0.54 水膠比，飽和石灰水養護下 56 天齡期之相對高度比較圖



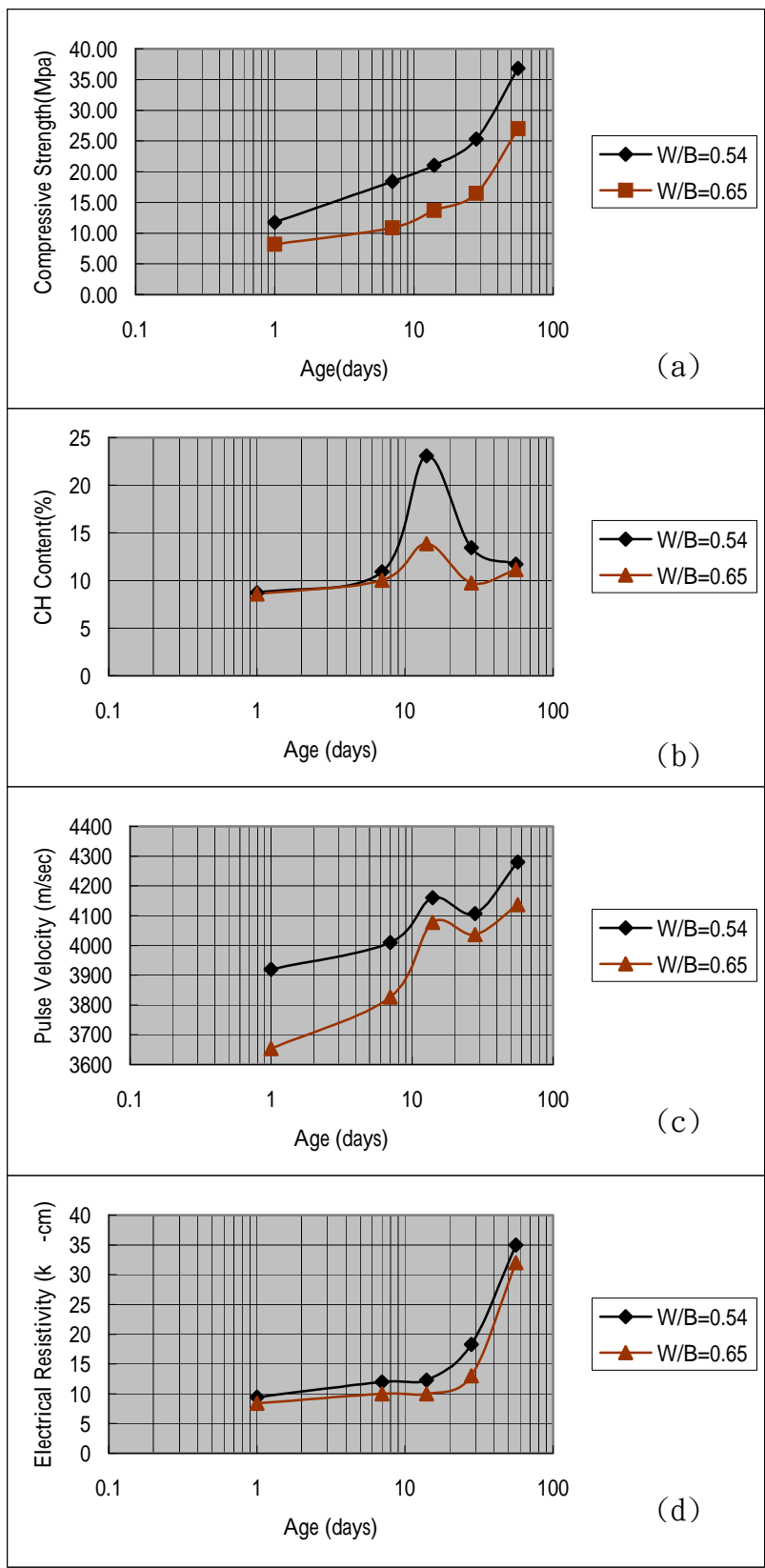


圖 5-13 飽和石灰水養護下不同齡期抗壓強度，CH 含量，超音波速及電阻值之變化