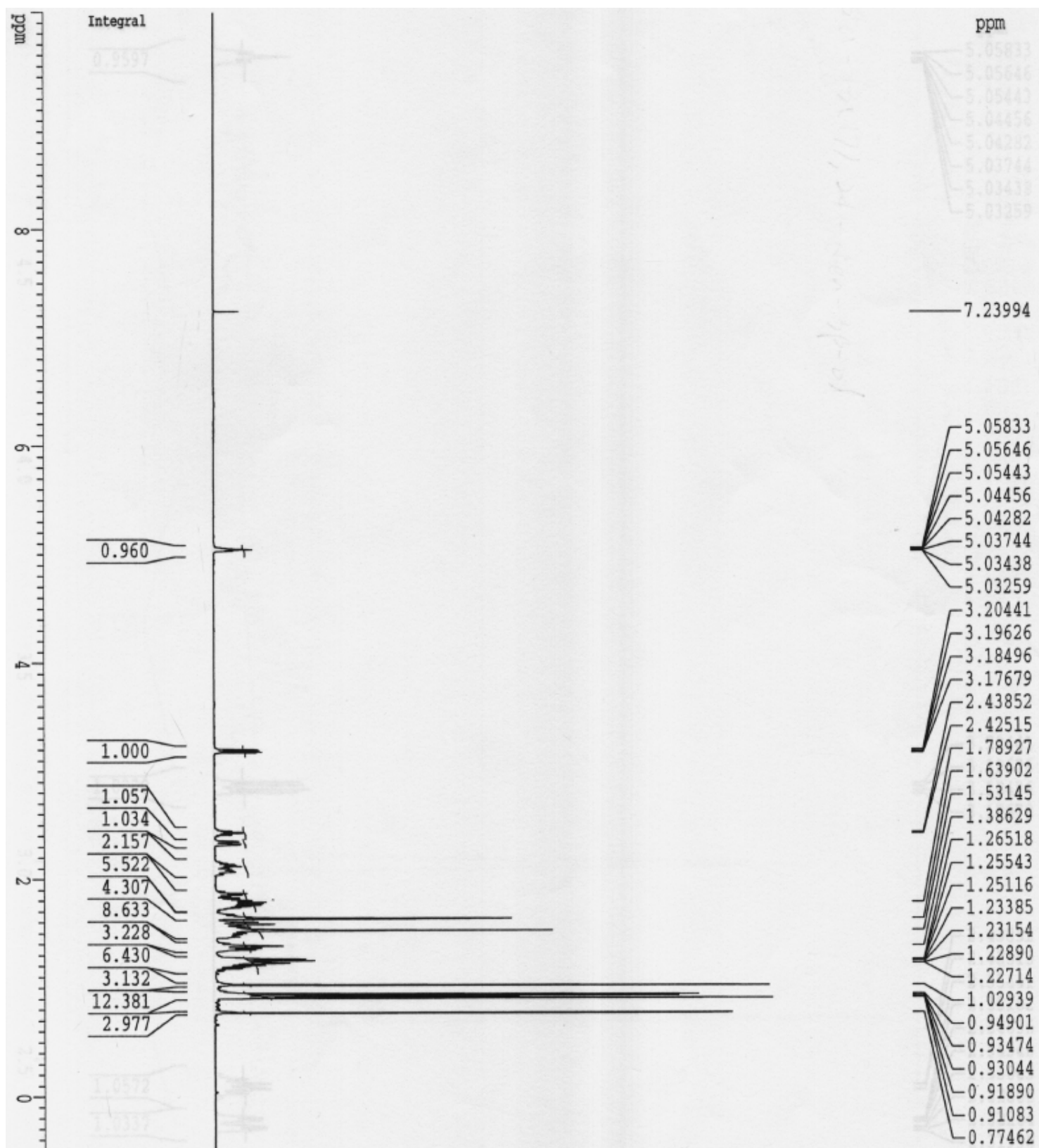
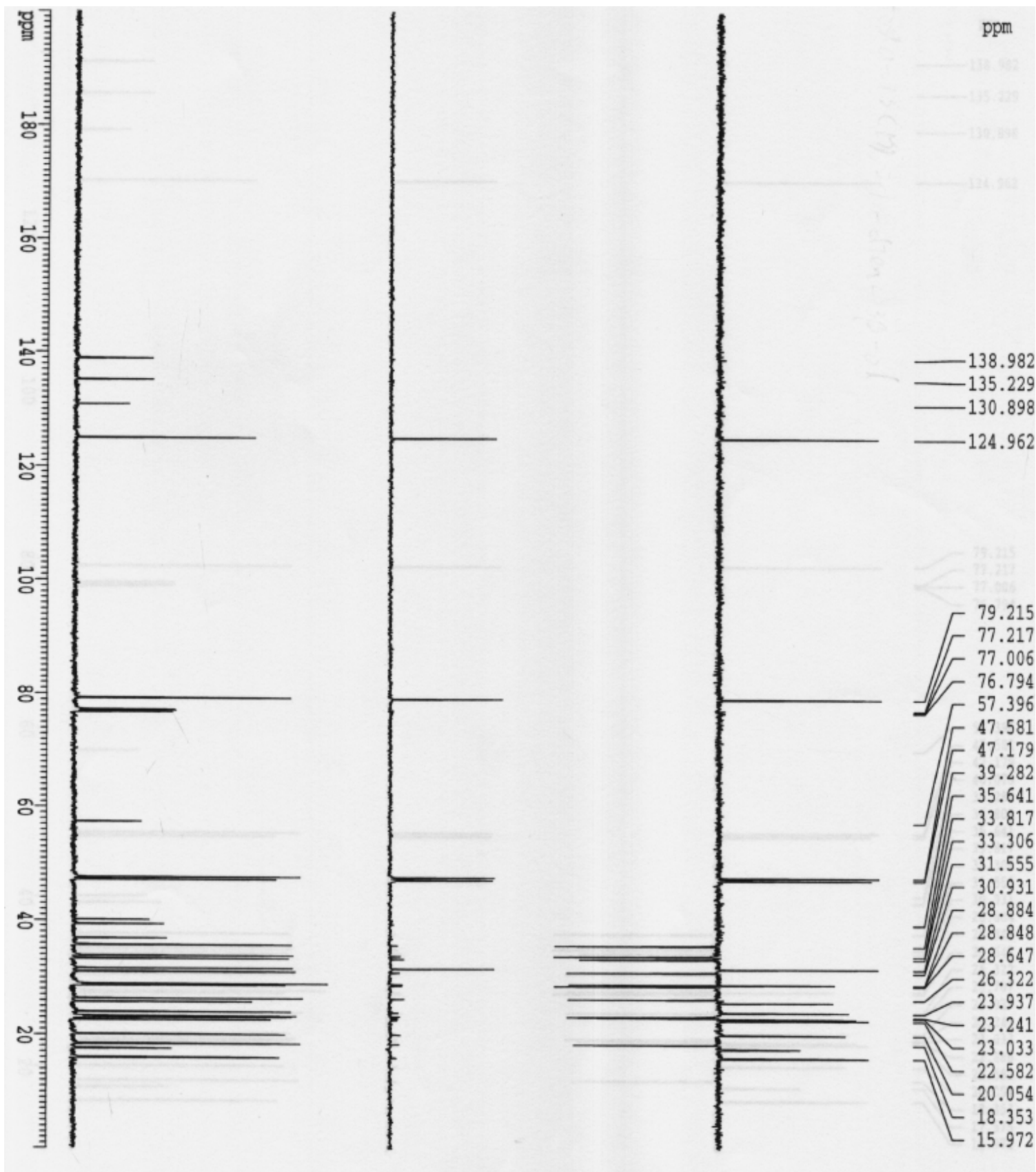


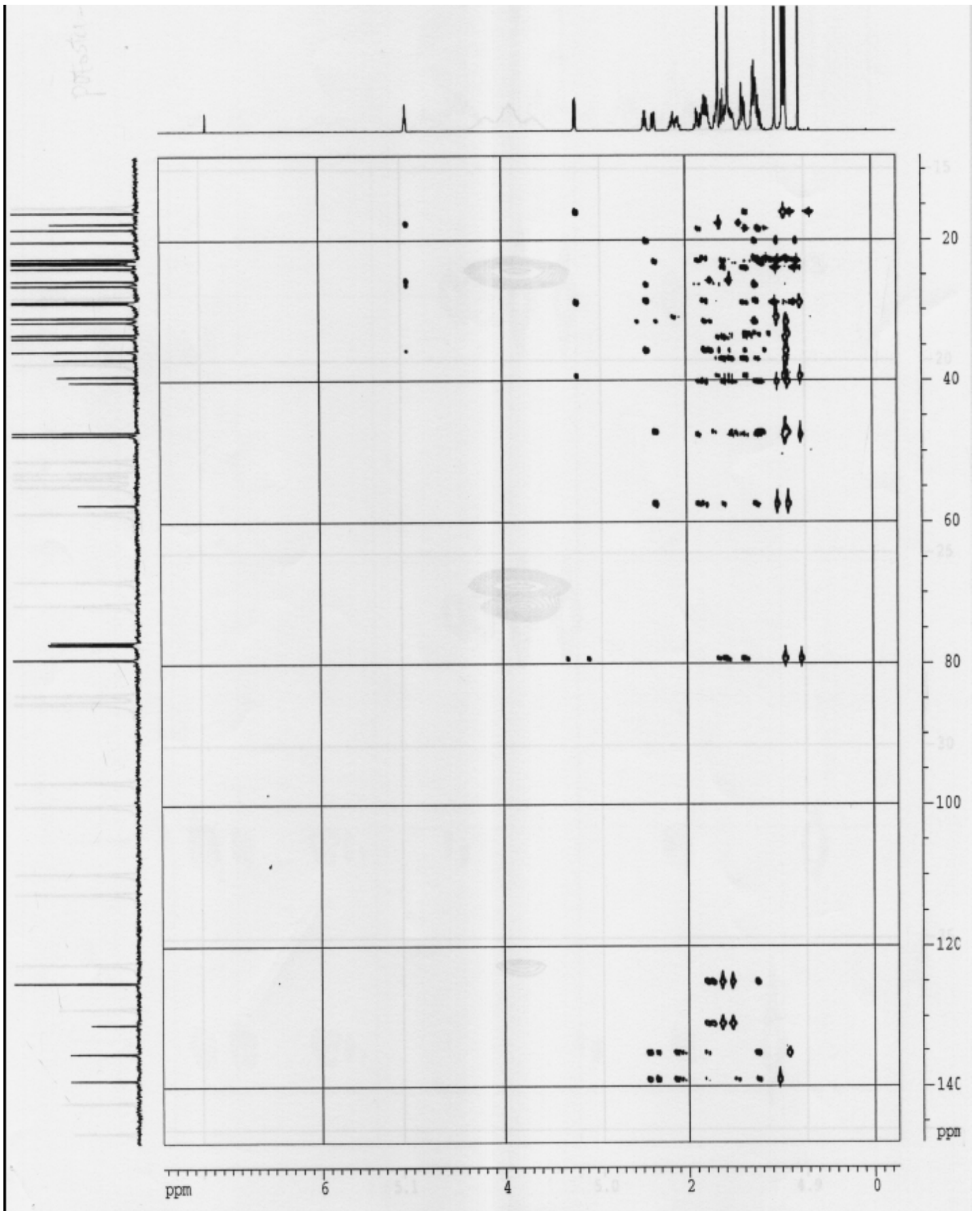
# Appendix



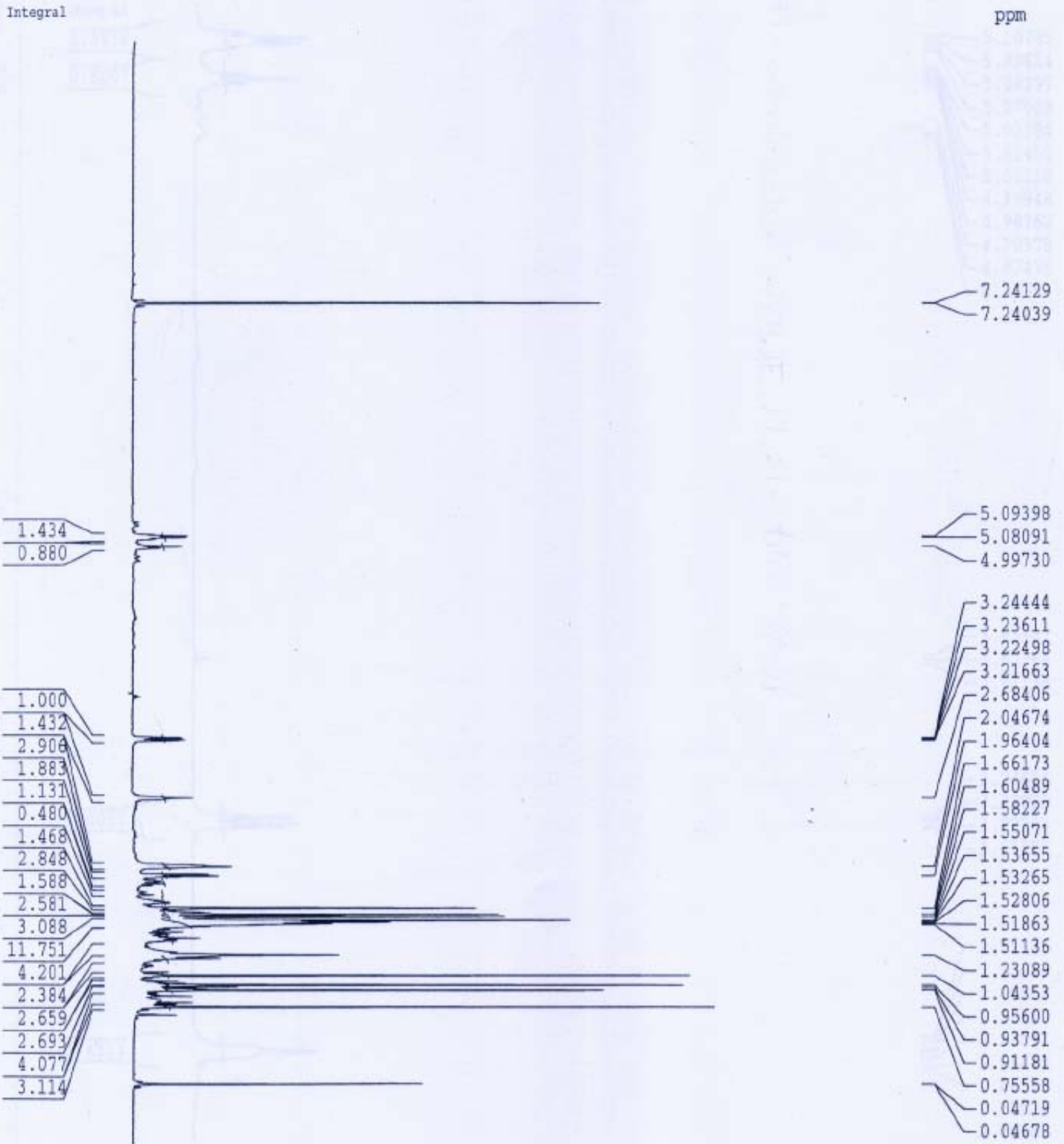
$^1\text{H}$  spectrogram of protosta-13(17),24-dien-3 $\beta$ -ol



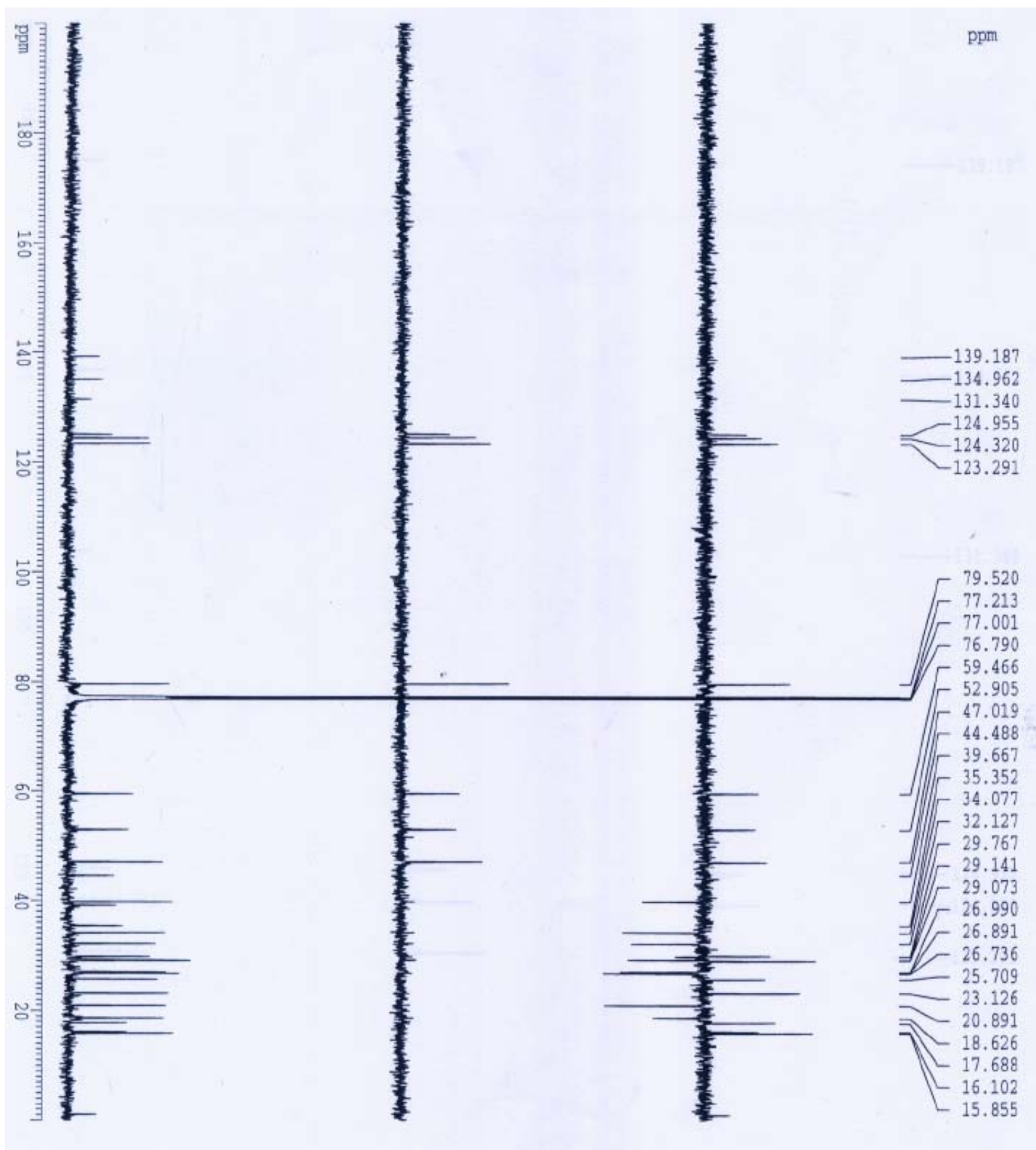
$^{13}\text{C}$  spectrogram of protosta-13(17),24-dien-3 $\beta$ -ol



HMQC spectrogram of protosta-13(17),24-dien-3 $\beta$ -ol

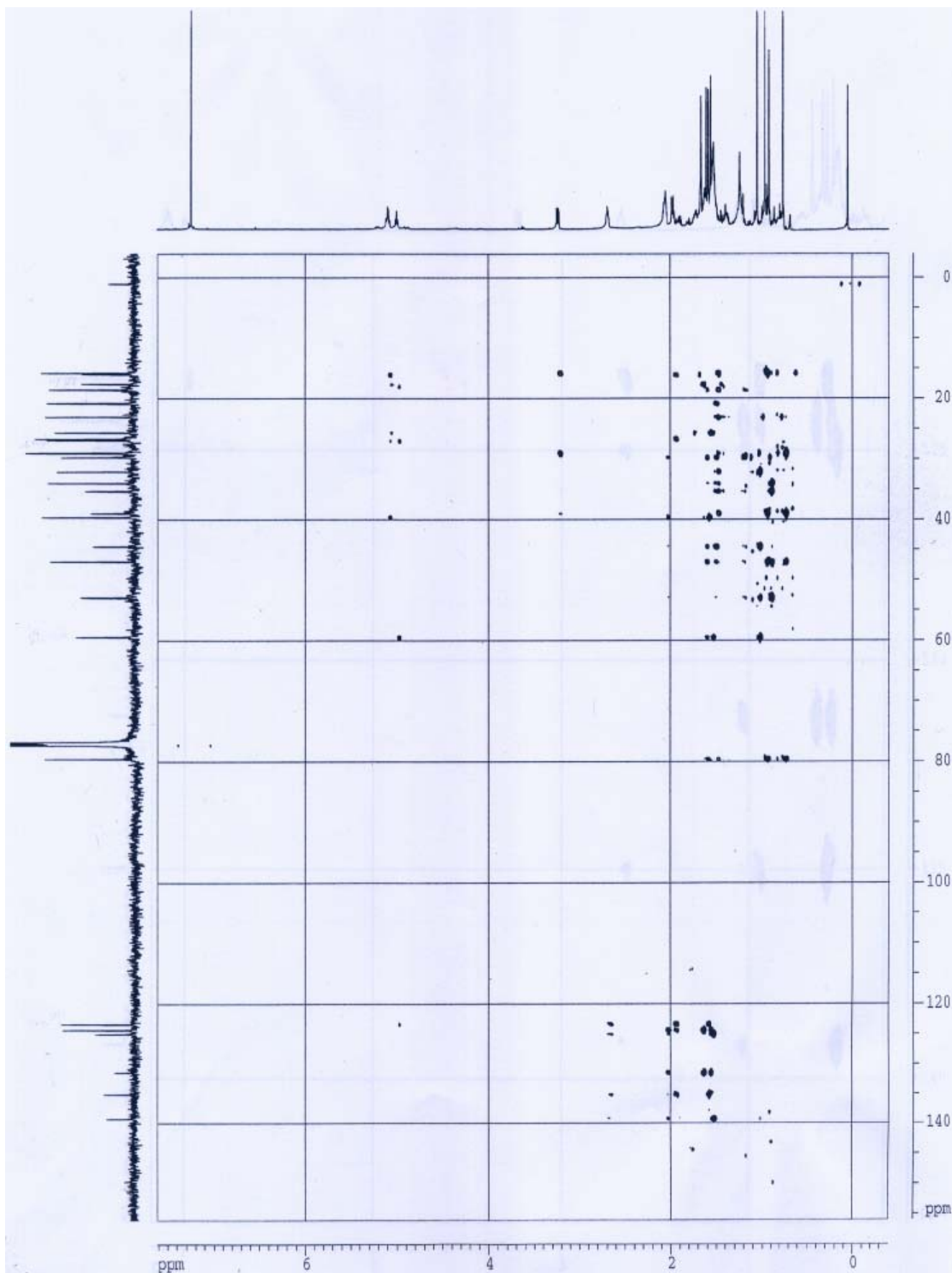


**<sup>1</sup>H spectrogram of (13*aH*)-isomalabarica-14(15)*Z*,17,21-trien-3β-ol**

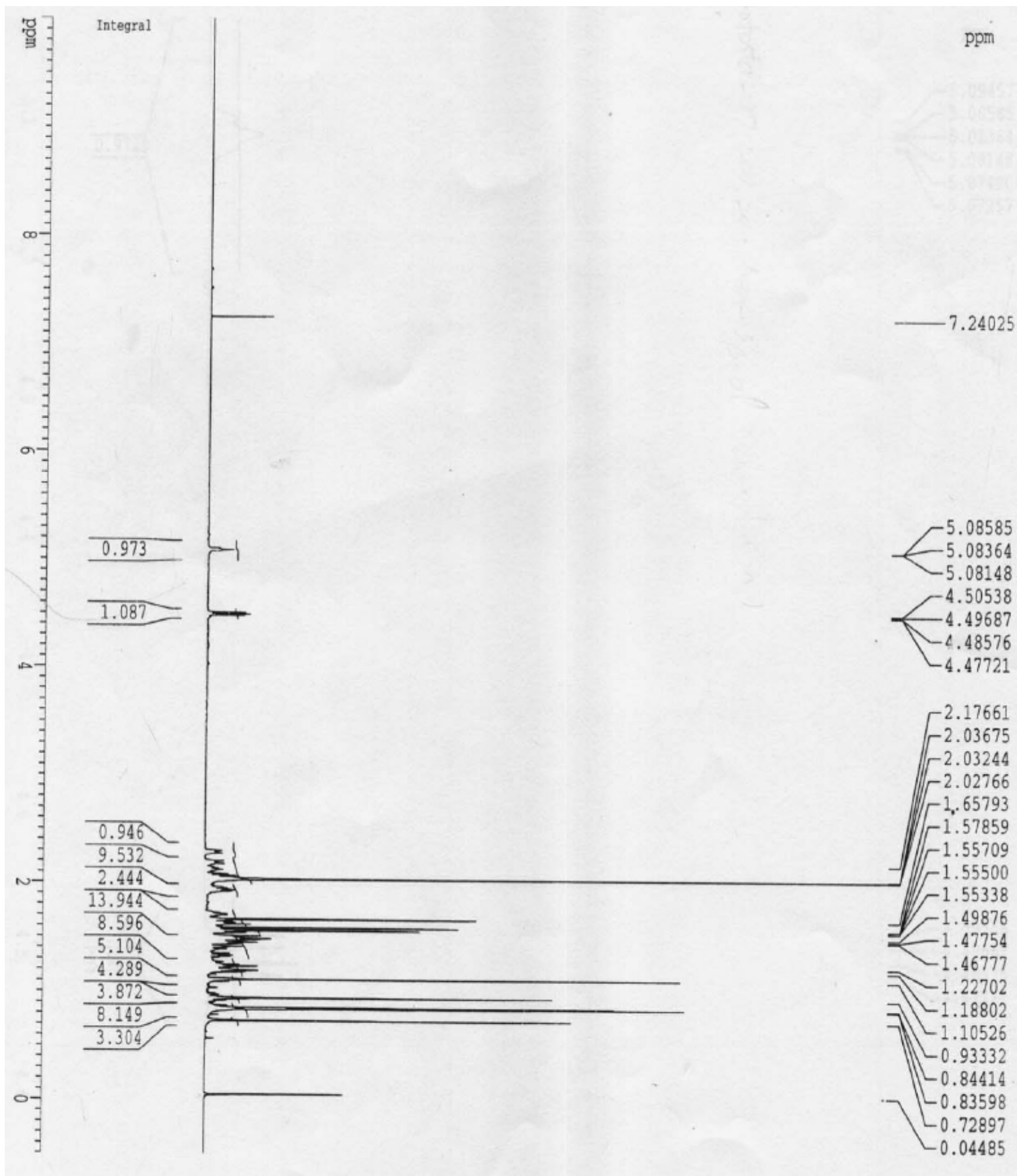


$^{13}\text{C}$  spectrogram of (13 $\alpha$ H)-isomalabarica-14(15)Z,17,21-trien-3 $\beta$ -ol

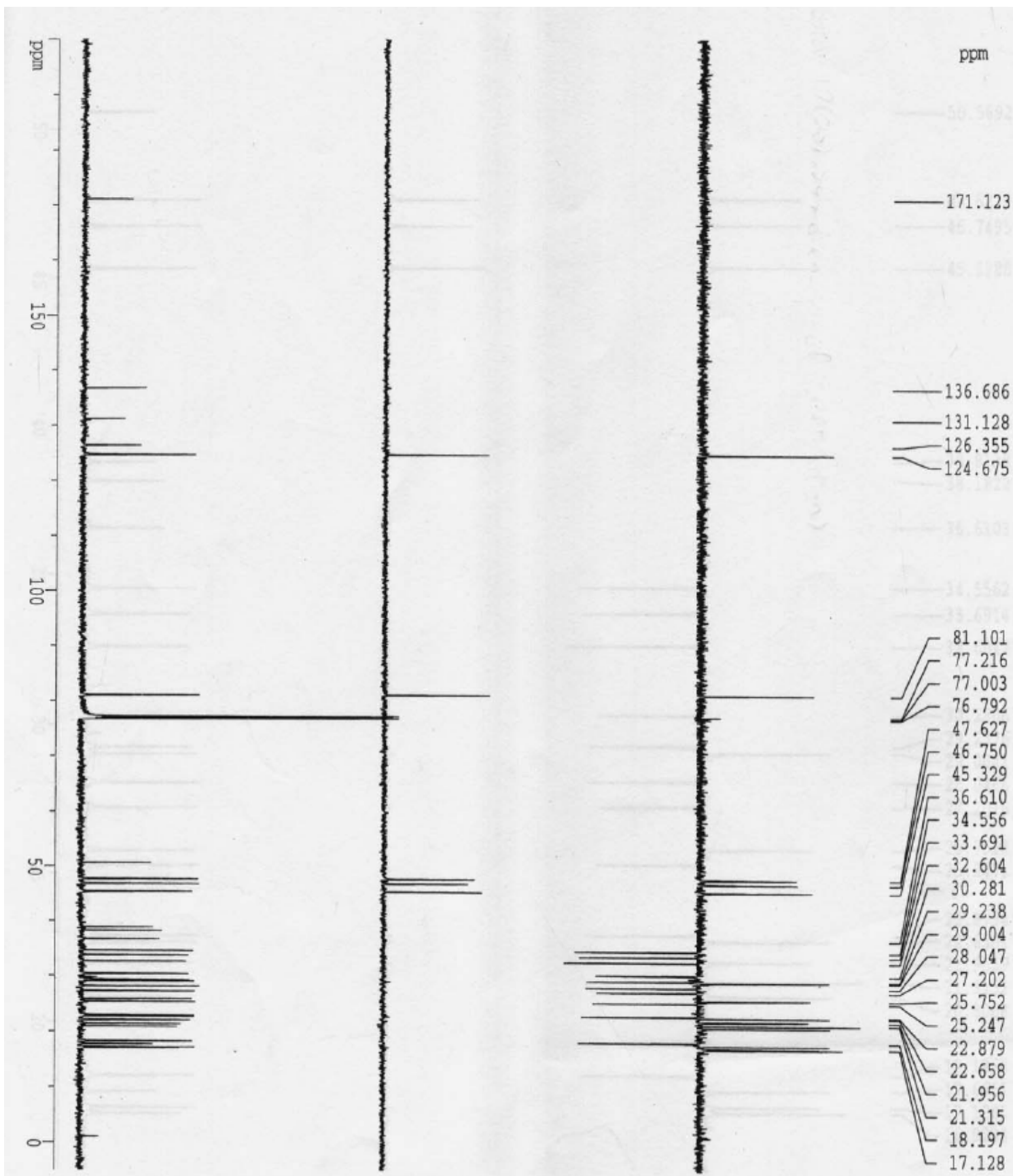




HMQC spectrogram of (13 $\alpha$ H)-isomalabarica-14(15)Z,17,21-trien-3 $\beta$ -ol

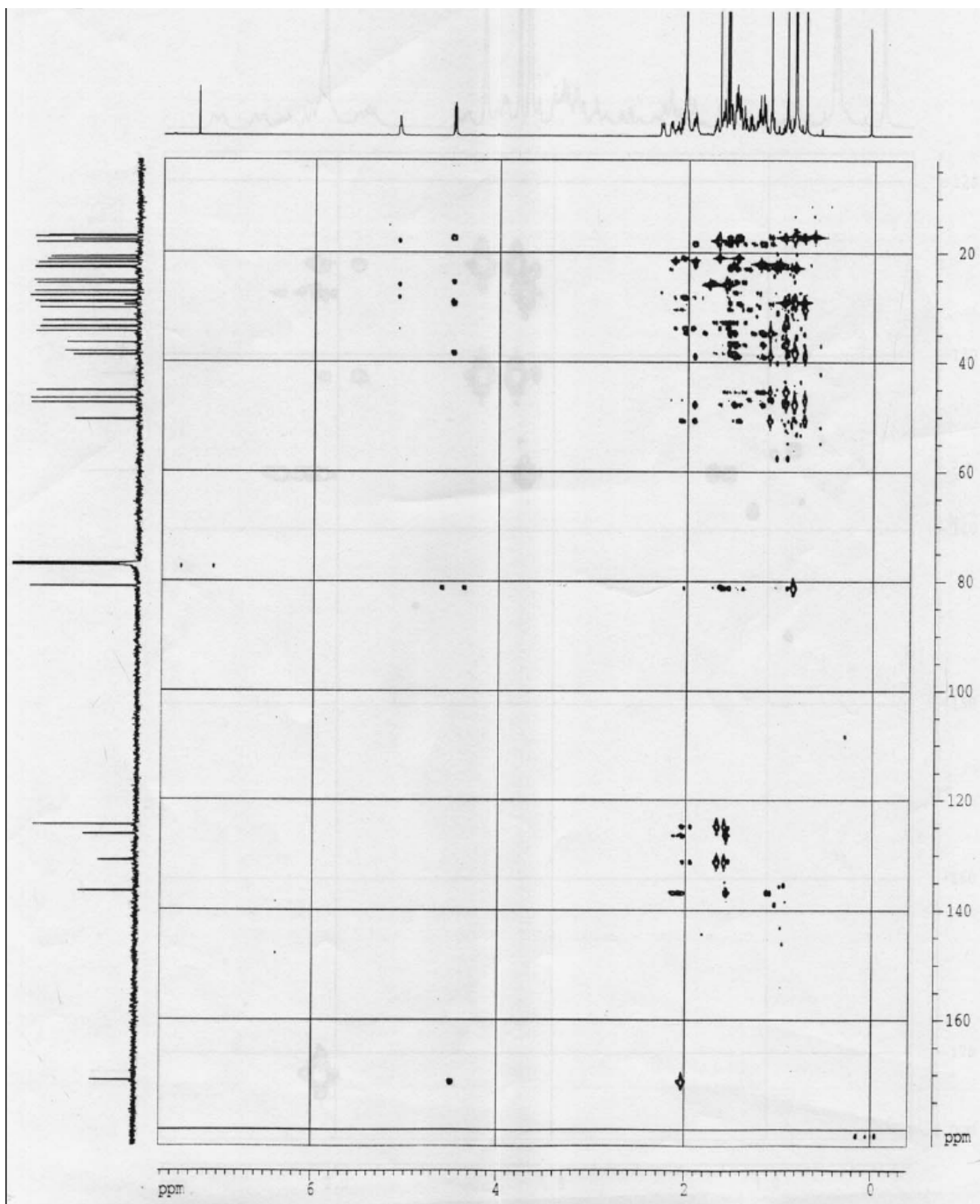


<sup>1</sup>H spectrogram of protosta-17(20),24-dien-3β-ol (acetylation)

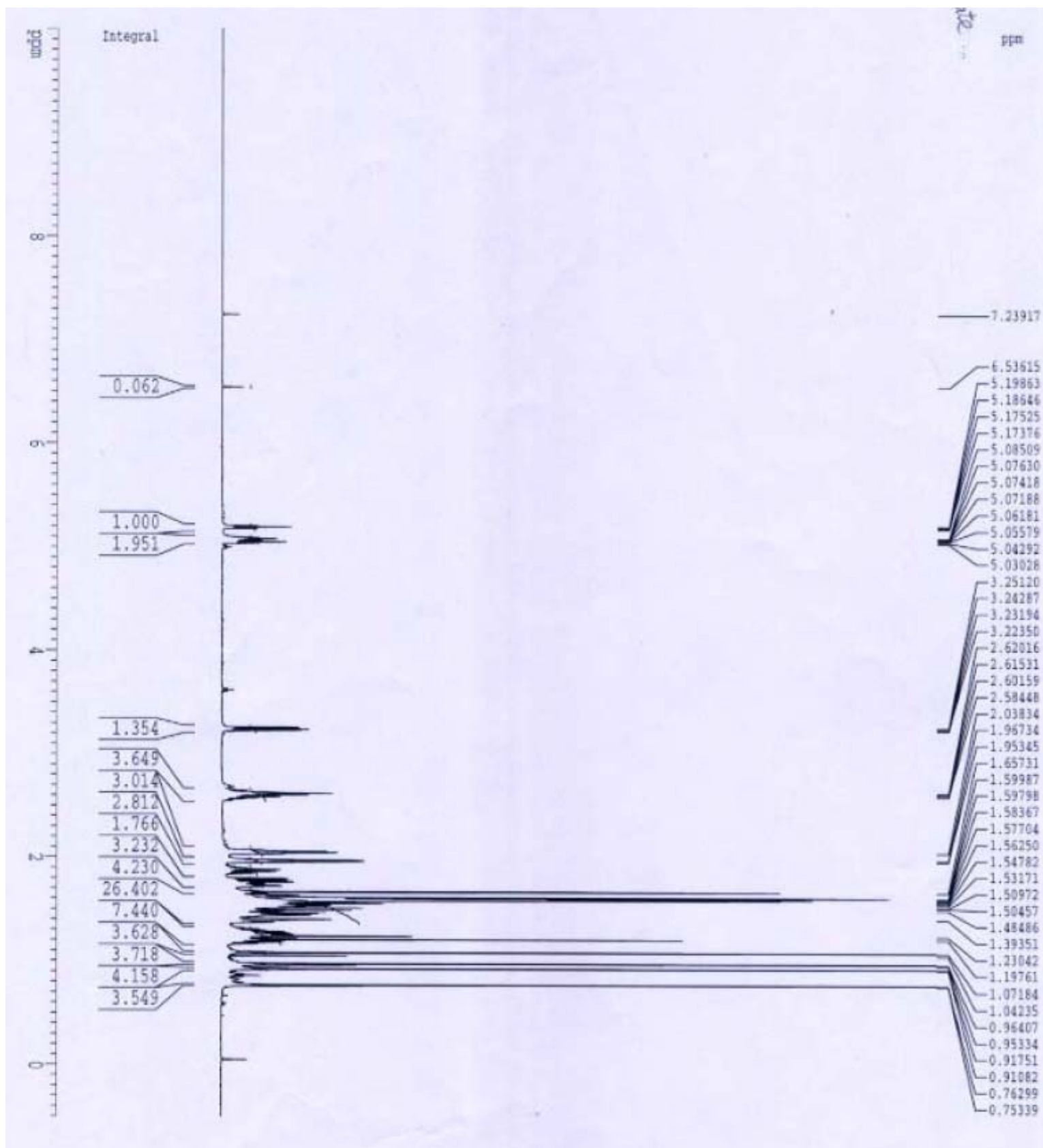


$^{13}\text{C}$  spectrogram of protosta-17(20),24-dien-3 $\beta$ -ol (acetylation)

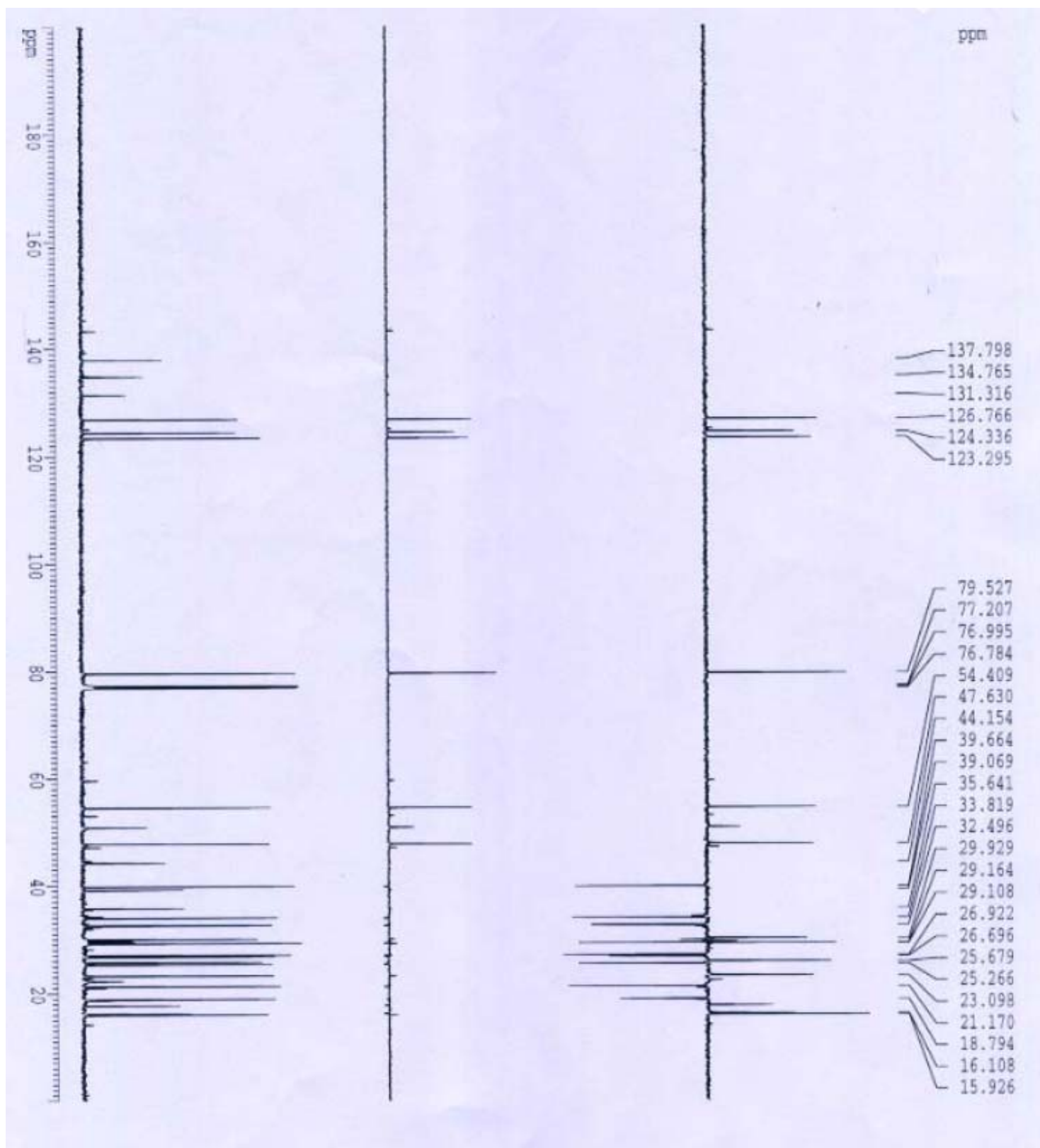




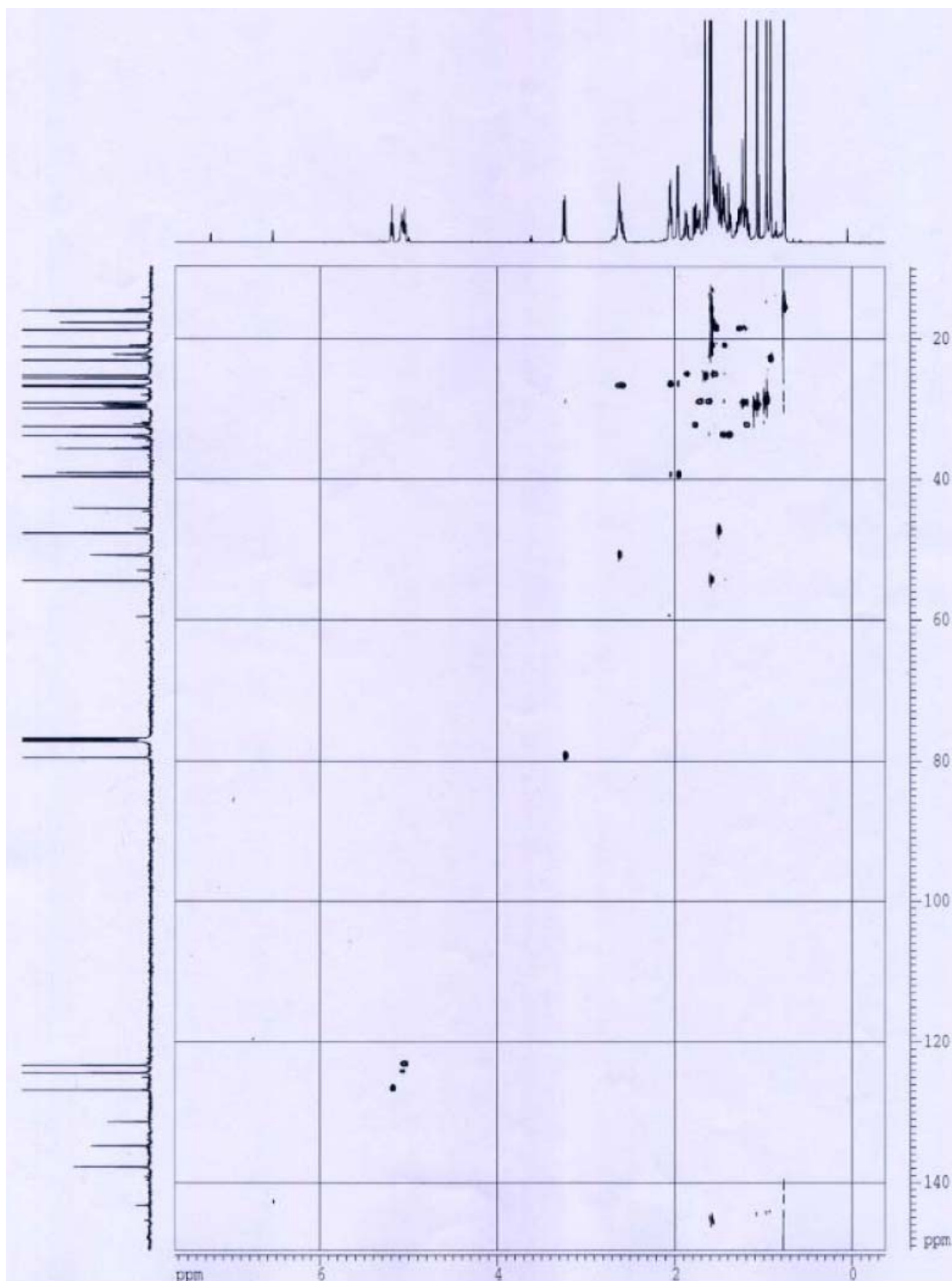
HMQC spectrogram of protosta-17(20),24-dien-3 $\beta$ -ol (acetylation)



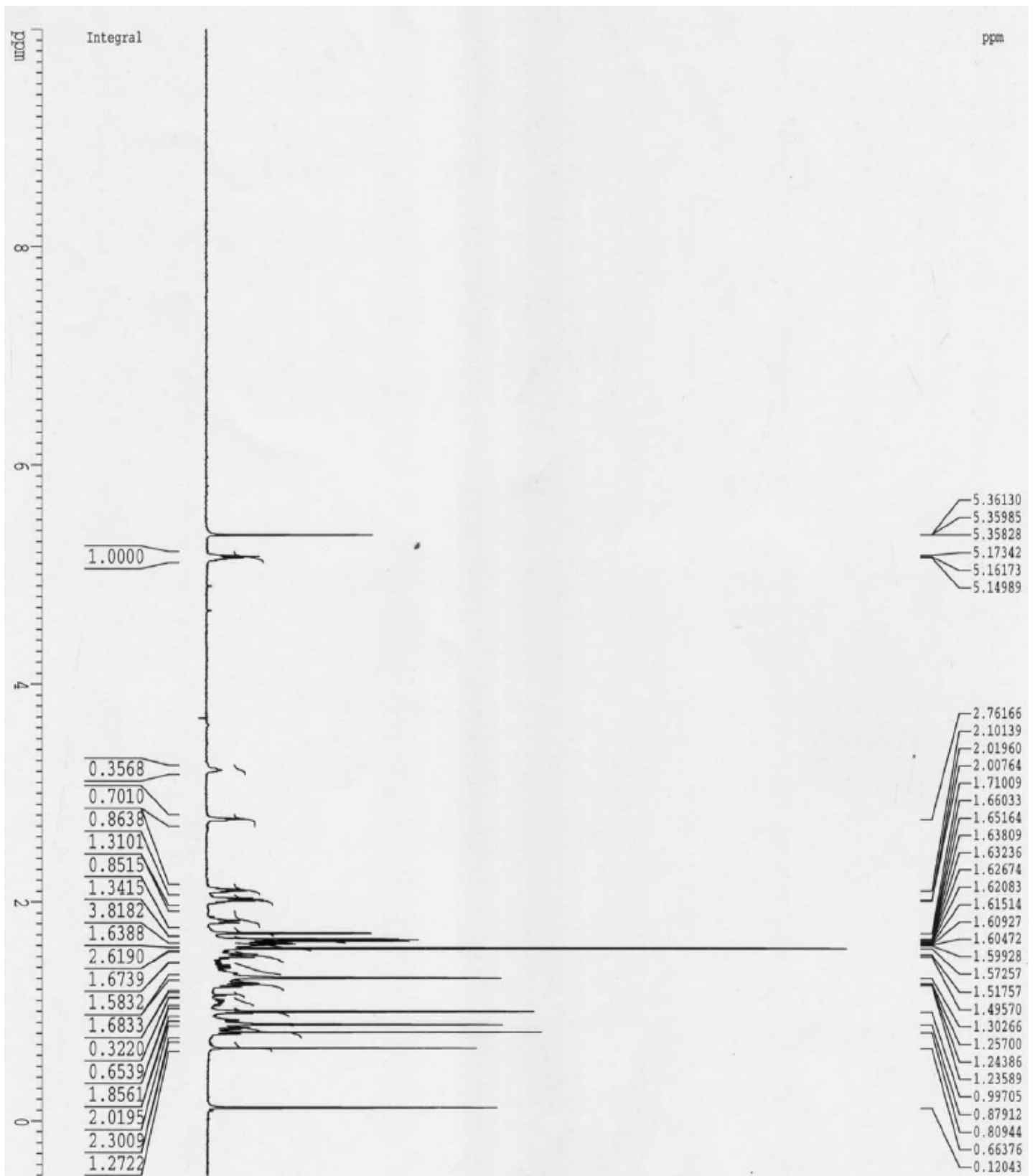
$^1\text{H}$  spectrogram of (13 $\alpha$ H)-isomalabarica-14(15)E,17,21-trien-3 $\beta$ -ol



$^{13}\text{C}$  spectrogram of (13 $\alpha$ H)-isomalabarica-14(15)*E*,17,21-trien-3 $\beta$ -ol

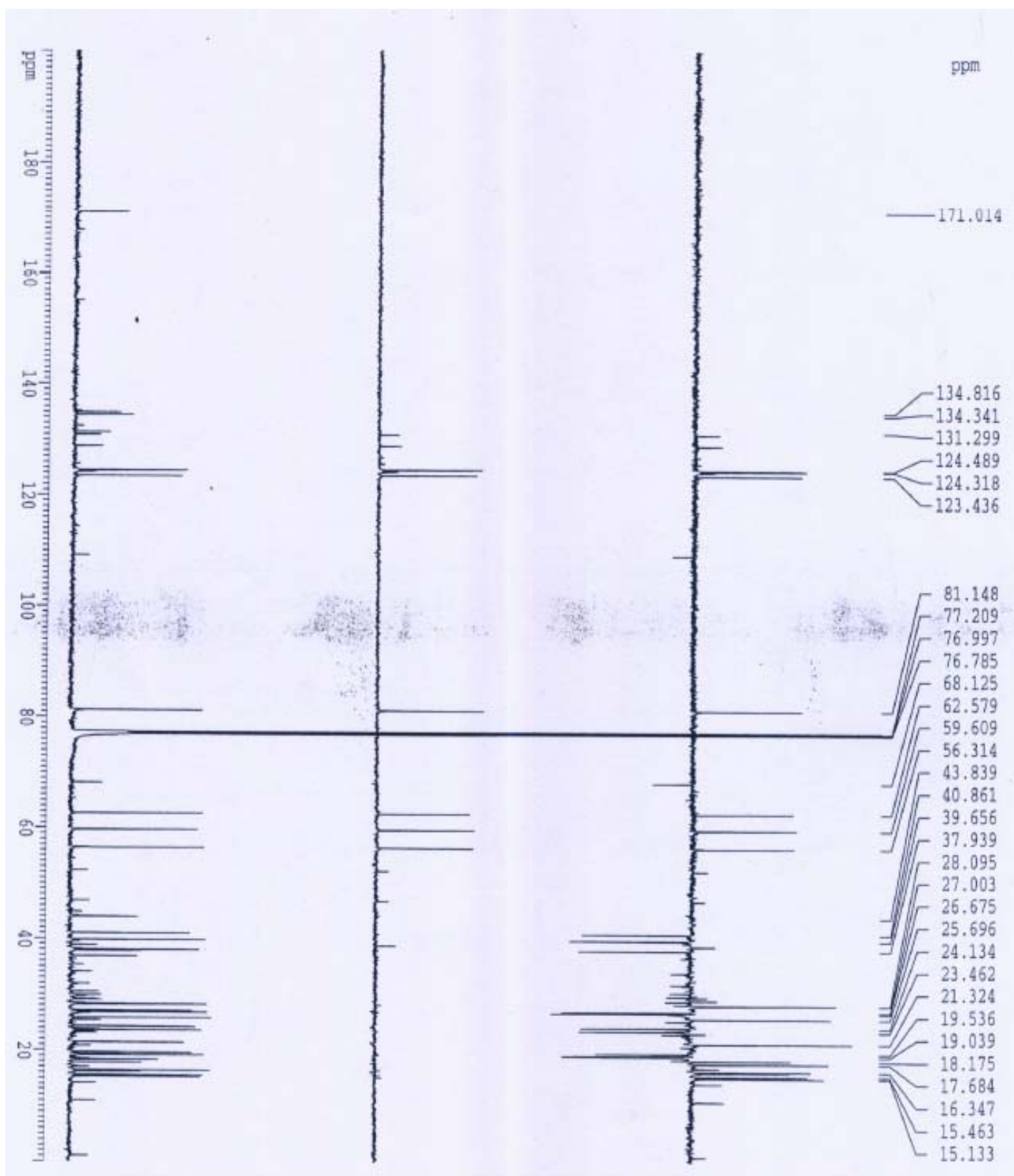


HMQC spectrogram of (13 $\alpha$ H)-isomalabarica-14(15)*E*,17,21-trien-3 $\beta$ -ol

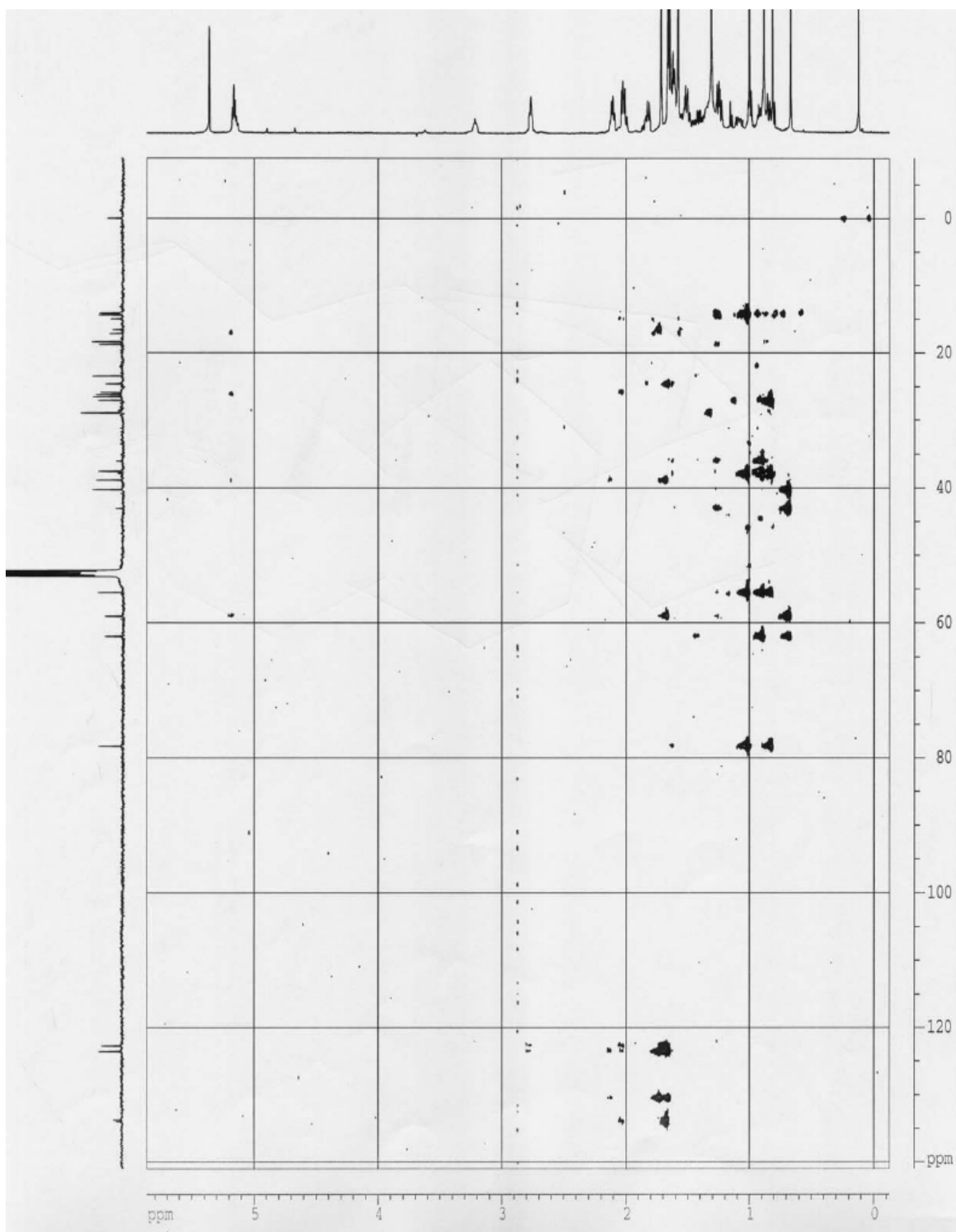


$^1\text{H}$  spectrogram of malabarica-14(15)*E*,17,21-trien-3 $\beta$ -ol





$^{13}\text{C}$  spectrogram of malabarica-14(15)*E*,17,21-trien-3 $\beta$ -ol



**HMQC spectrogram of malabarica-14(15)*E*,17,21-trien-3 $\beta$ -ol**