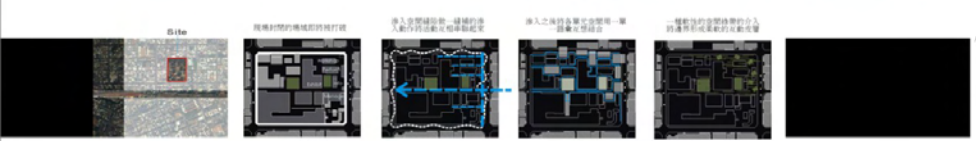


# Taiwan Art Design and Architecture Center

## Weaving Fluid Dispersion



### MAIN CONCEPT

整體立面虛化 點/線/面 形成無邊界的界定  
 酒廠入口圍閉解除後 應加入新的空間元素重新界定領域介面  
 採用立面透空的基本思考 發揮內外空間連接的新可能  
 為回應 TADA 之創造性 Program  
 以當代空間特質為思考 城隍廟動感或透明 我們試圖捕捉 [動態性] 與 [模糊性]

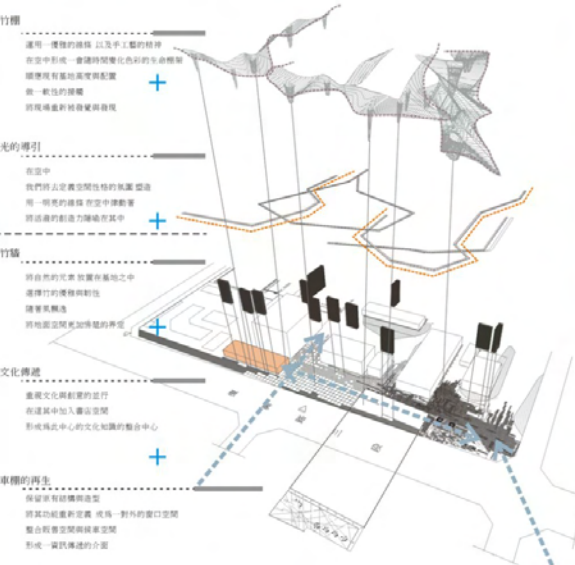
【工藝】  
 藝術創作的工藝精神必須再重新被發現  
 機能與美觀並存的策略

【竹】  
 以風土性出發 思考 中台灣當地便於取得  
 竹材為主要材料 可應用在不同層面

【0001】變 / 不變  
 Plastic Space 是我們嘗試融入的精神  
 自然環境的季節變遷 影響到空間之自我調整  
 空間於形而生自我調整

【0002】滲透 INFILTRATION  
 以「呼吸」為基礎 由內而外  
 試圖以軟性方式引導引導 藉著  
 簡單平面中的元素 彼此穿插 交織  
 滲透內部 滲透外部

【0003】邊緣 EDGE  
 在正立面建築對數之後  
 以木條 / 鋼條 彼此交織  
 用於軟性界定領域邊界 形成緩衝區  
 引導人群 同時 對空間進行  
 定義 / 尺度 統一空間組織



### 線架構

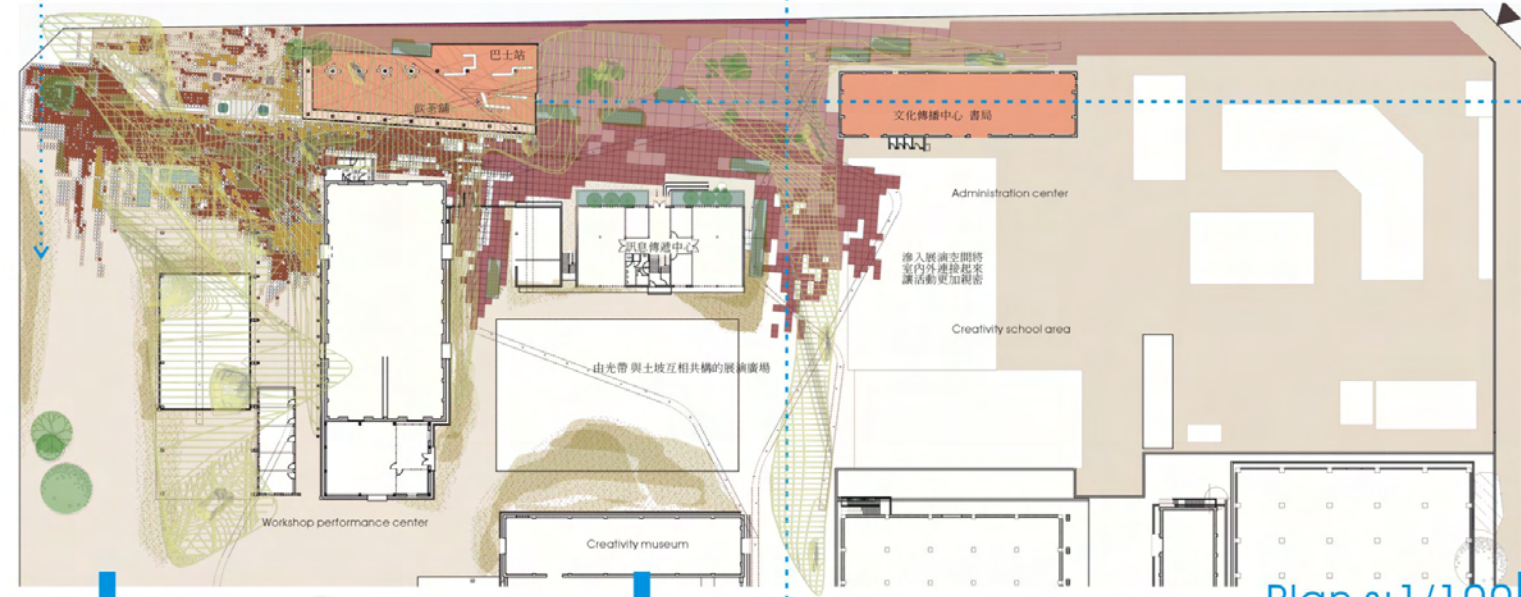
【線性】  
 懸架於網線之上端之間 形同虛化的量體  
 進而切割空間 定義入口廣場尺度  
 同時具有垂直導引作用  
 為開放空間不可或缺之指標性元素

### 點架構

【點式】  
 點式構 / 透空磚 / 光圓磚  
 點式的鋪面元素 由外而內漸貼至內城  
 不同機能 應用於不同使用區域  
 將地上行為反應至地面上 構成有機共構之 pattern

### 面架構

【面的】  
 由地面延伸至天際線的透空竹製編織面  
 輕盈且具透空性的材料 可以界定活動區域範圍  
 有機流動的形可能 傳統材料 + 新式應用  
 手工藝精神的發飾 形成藝術化入口意象



## Concept>>

Taiwan Island Culture contains diversified and fusible cultural factors.  
Iridescent and unique culture spirits mutually co-construct the Taiwan Island image.  
Stretching from Central Mountains, plains and hills breed and care Taiwan Spirit.  
Like Mother Land, mountains are the subjective of Taiwan.  
After TAA's discovery, the main stream of Taiwan Island, Taiwanese, Tai-culture shape up and appear gradually.

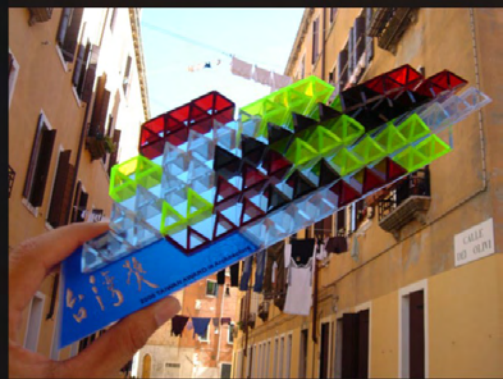
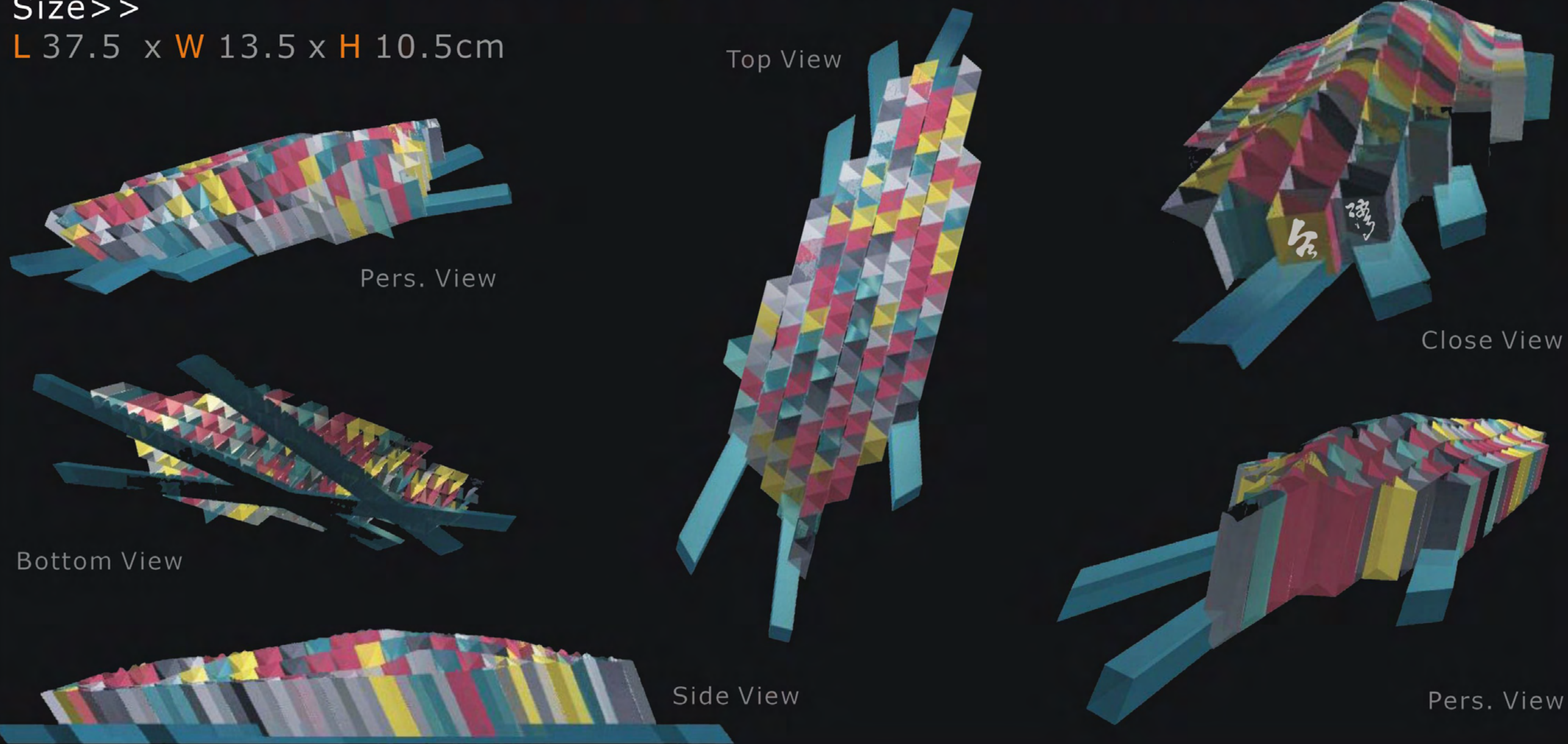
## Execution>>

Along with the poster of TAA, I utilize the concept of Pixelization.  
Simplified Island figure is collaged by Triangular units and form a free-form surface of Central Mountains.  
Each triangular unit is composed by 3 acrylic plates[manufactured by CAD/CAM technique].  
Different colors of dyed acryl imply cultural diversity.  
Lifting surface and tilting units present Dynamic Balance. This signifies Emerging Taiwan Awareness.  
The pedestal is made of 3 water-blue acryl bars that spread around. Implicitly, ocean leads Taiwan and keep in track globally.

## Size>>

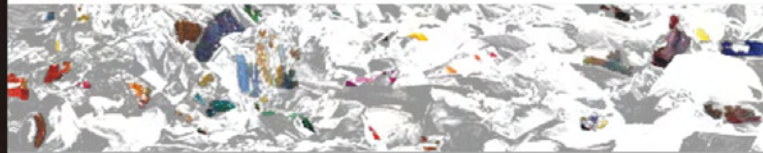
L 37.5 x W 13.5 x H 10.5cm

# Land-ing 大島。沉著



Contest 03\_Taiwan Award cup design competition  
Date\_Summer 2006  
Associate producer\_C.H. Li  
Credit\_design merit award

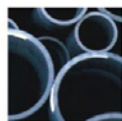
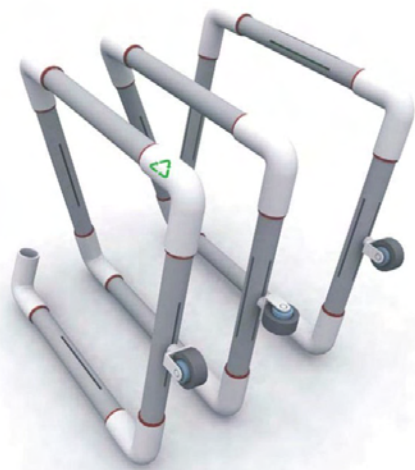




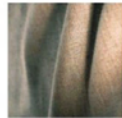
Nomadic boys and girls love to traverse.  
 Variable ways of composition is fabulous.  
 Easy and quick to construct tiny Self-space.  
 Whenever it is, wherever u are, all u need is Freedom from Desires.

knead by yourself!

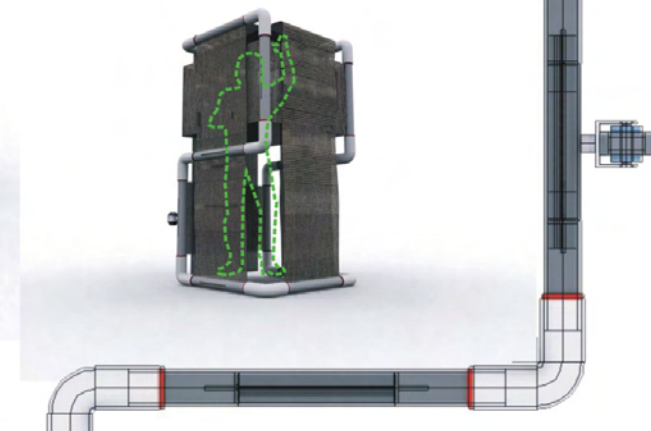
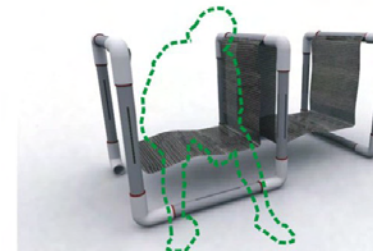
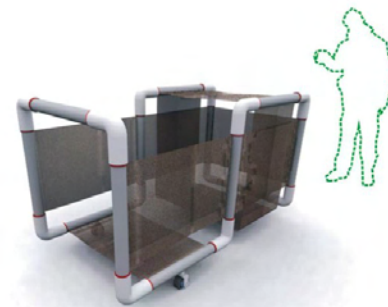
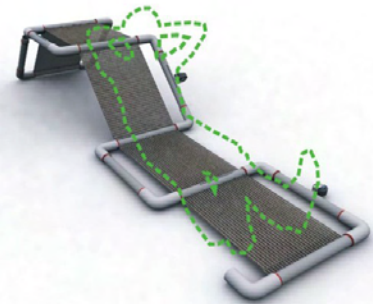
# SQUARE TWISTER



The whole set is combined with **PVC plastic pipes**,  
 and is easy to be gained within recycling system.  
 PVC's attributes are Strong, Light, Waterproof, Assembly and Disassembly.

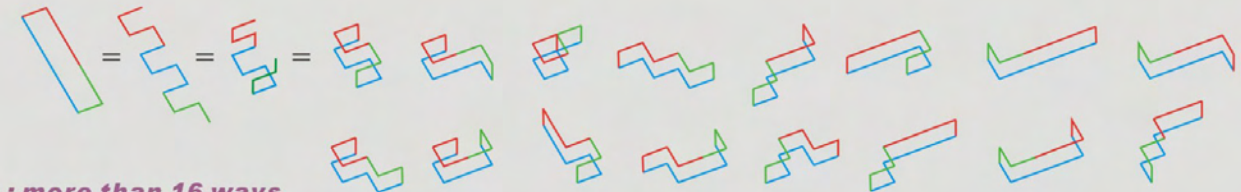


**Canvas** has great tenacity to hold body weight.  
 Also, it has windproof density and handy to fold together.



## Storage + Living + Mobility

Storage -- belongings and goods.  
 Living -- rest and sleep.  
 Mobility -- portable and extendable.



**FLEXIBLE Loop : more than 16 ways**

