

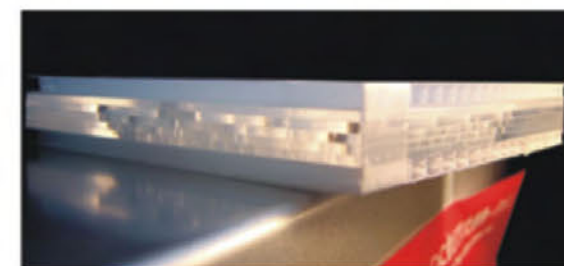
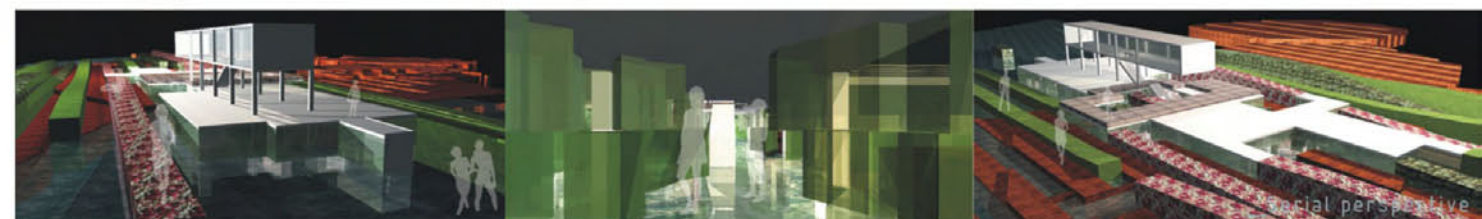
_Perspective
day view



_Unit sectional perspective-Water House

Water-mix space

I utilize the concept of superimposition of multi-scale stacks to construct a diversified visual reflection within a rigid cube. Different scales of boundary and crack of building could infer different building element hierarchy. The crumble elevation of building allow water to infiltrate into indoor space, and create mixture and misplacement between water and space.



_Study of visual elevation

