



M.C. Escher

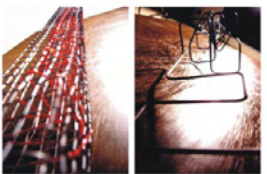
Statement -- oxidation / reduction
dominance / obedience
irrigation / germination
flux / reflux
drive / driven

Metamorphosis of Feedback Ability.

Materials Lights

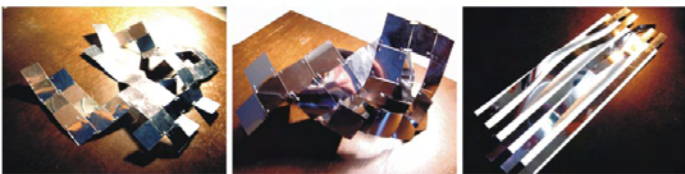
I try to make some devices for lights to interact with each other.
4 aspects of the main subject describe 4 characteristics of sounds.
Harmonic quavers, Phase shifts, Reverberation and Echoes.
The phenomena depict -- the circuit of shifting system that conducts back and forth.

Material Trial



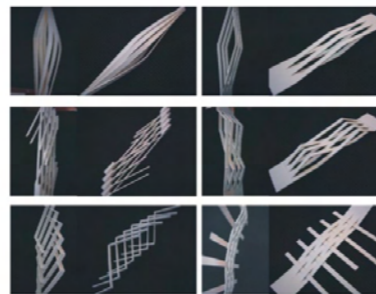
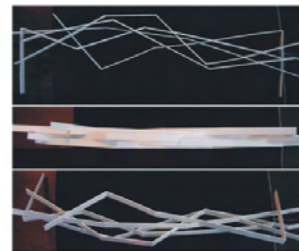
Continuity

the music is a sequential and floating notation.
Try to construct a continuous activity with wires in a frame.



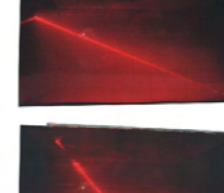
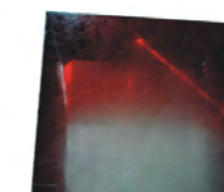
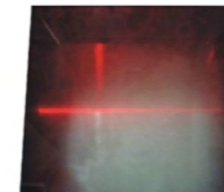
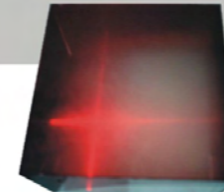
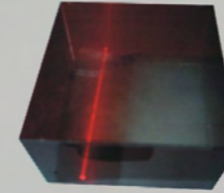
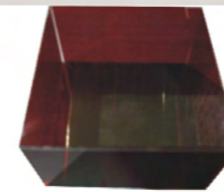
Reflection

The mirror-like paper has the ability to present the movement of environment.
The different angles that stripes twist could divide the vision into fragments



Stripe Trial

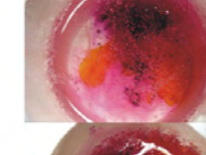
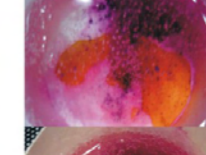
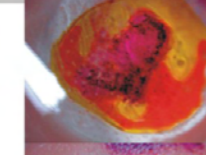
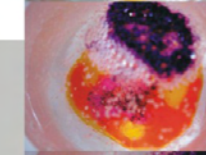
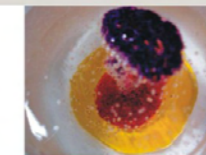
Stripe could fold and unfold space as structure and wall.
And it also connects itself to form a continuous and self-organized.



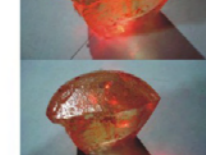
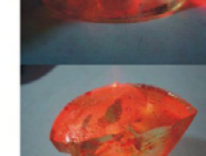
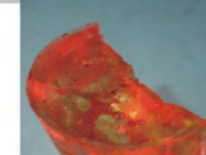
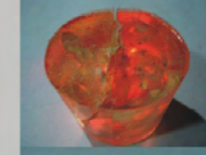
Collision
in
Smoke



Infiltration
thru
Apertures



Diffusion
between
Liquids

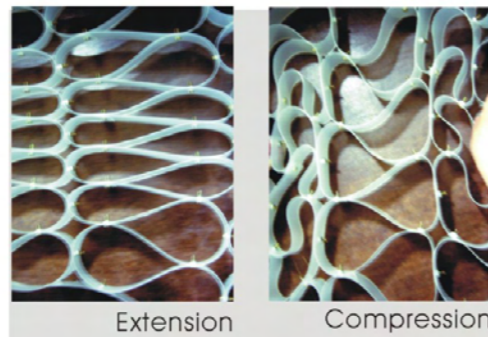
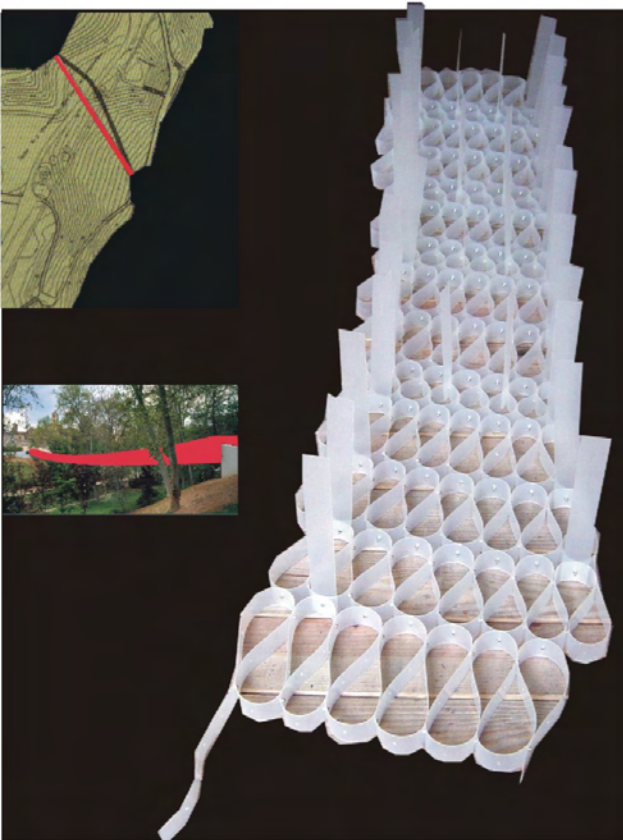
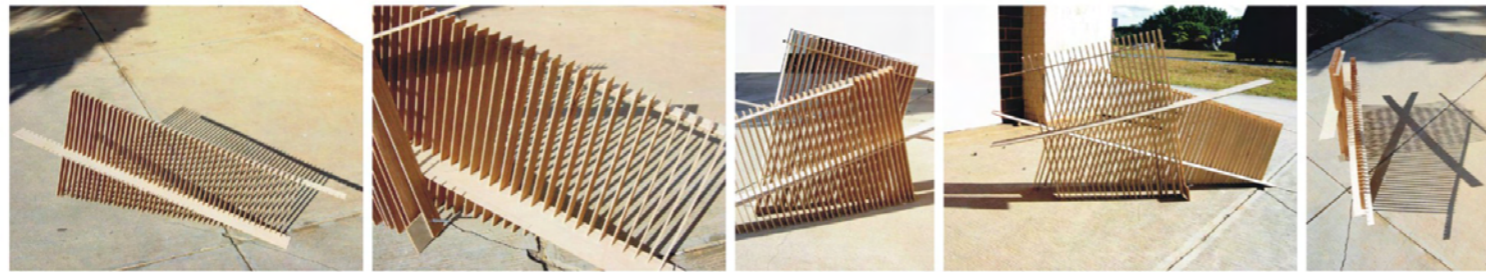
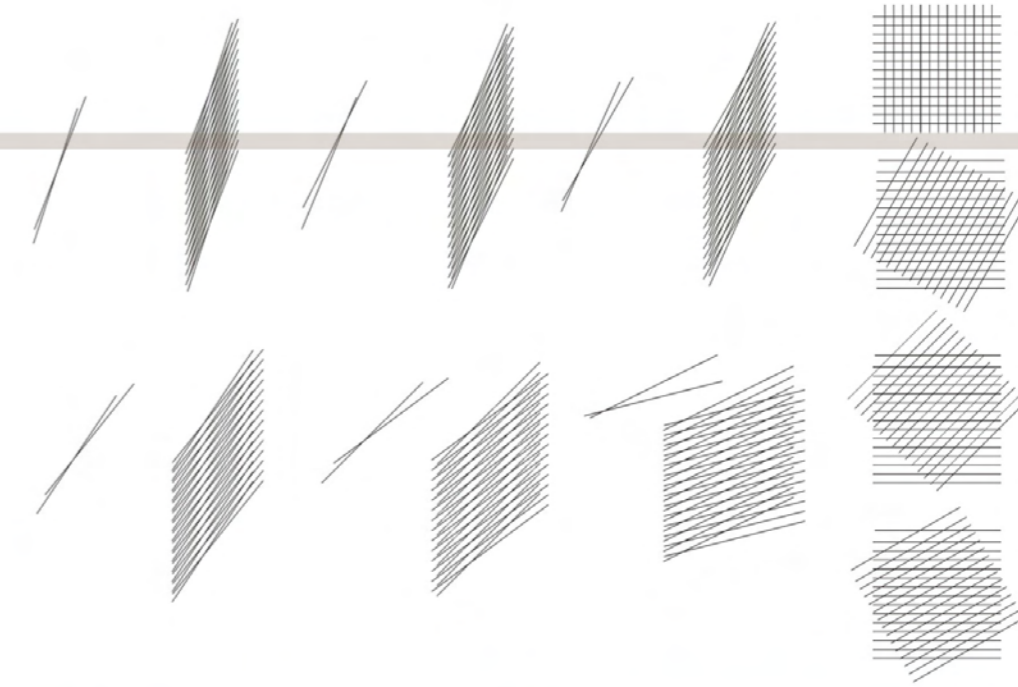
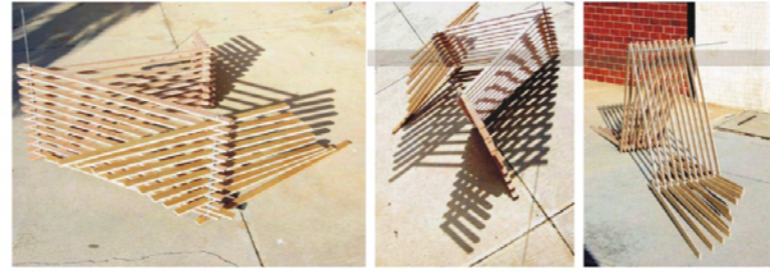


Reflection
from
Sections

Interference

Swinging and crossover of stripes create kinds of visual frequency. While walking along a crossover filter wall, we could sense changing patterns of texture. And it is related to how fast we approach to and in which angle we stare at it.

This is a visual phenomena associates with the convergence and two simple, regular and oscillated patterns.



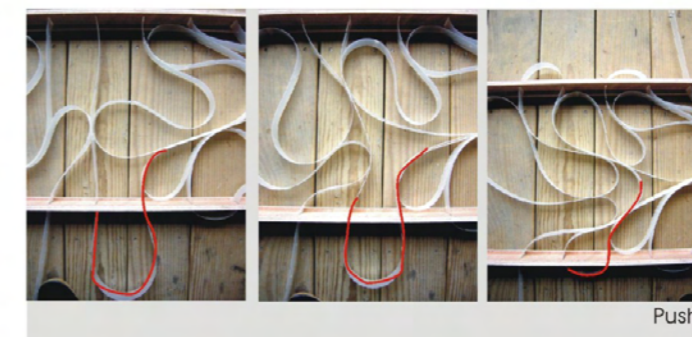
Extension Compression

Elastic Structure

Different densities of composition units contained different structural properties. The extension and compression of units could result in changes of scale, angle and height.



Twist



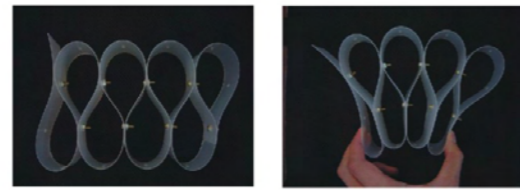
Push

Continuous structure

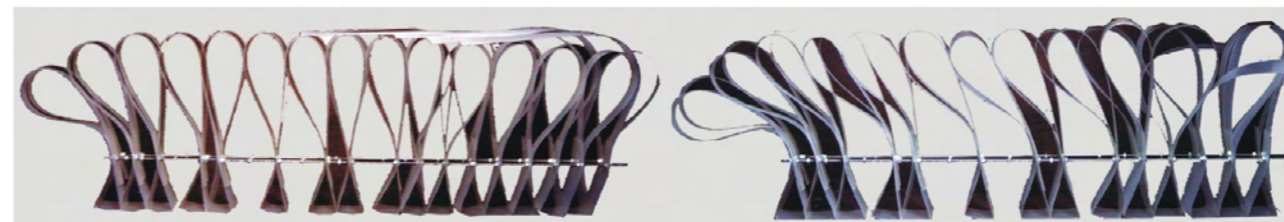
it's a dynamic network system. When you pull a threshold of bends, the force is distributed throughout. The stripes push and draw each other and the scale of space is varying.



Draw

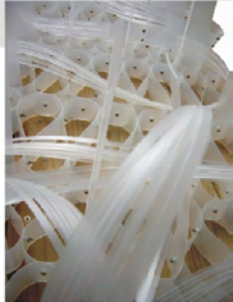


Unit



Wave Structure

The bendable property of plastic could change its phase by gravity, wind and forces. According to this, I adopt it as the elevation of the footbridge.



Continuous Bends : fluid, repetitious, rhythmic

— P l e a t s

A pleat (older plait) is a type of fold formed by doubling fabric back upon itself and securing it in place.

Project 03
Date_Spring 2007
Advisor_Kyle Yang

: Flux _ Time-based Architecture



THE FILTER CIGARETTE

