

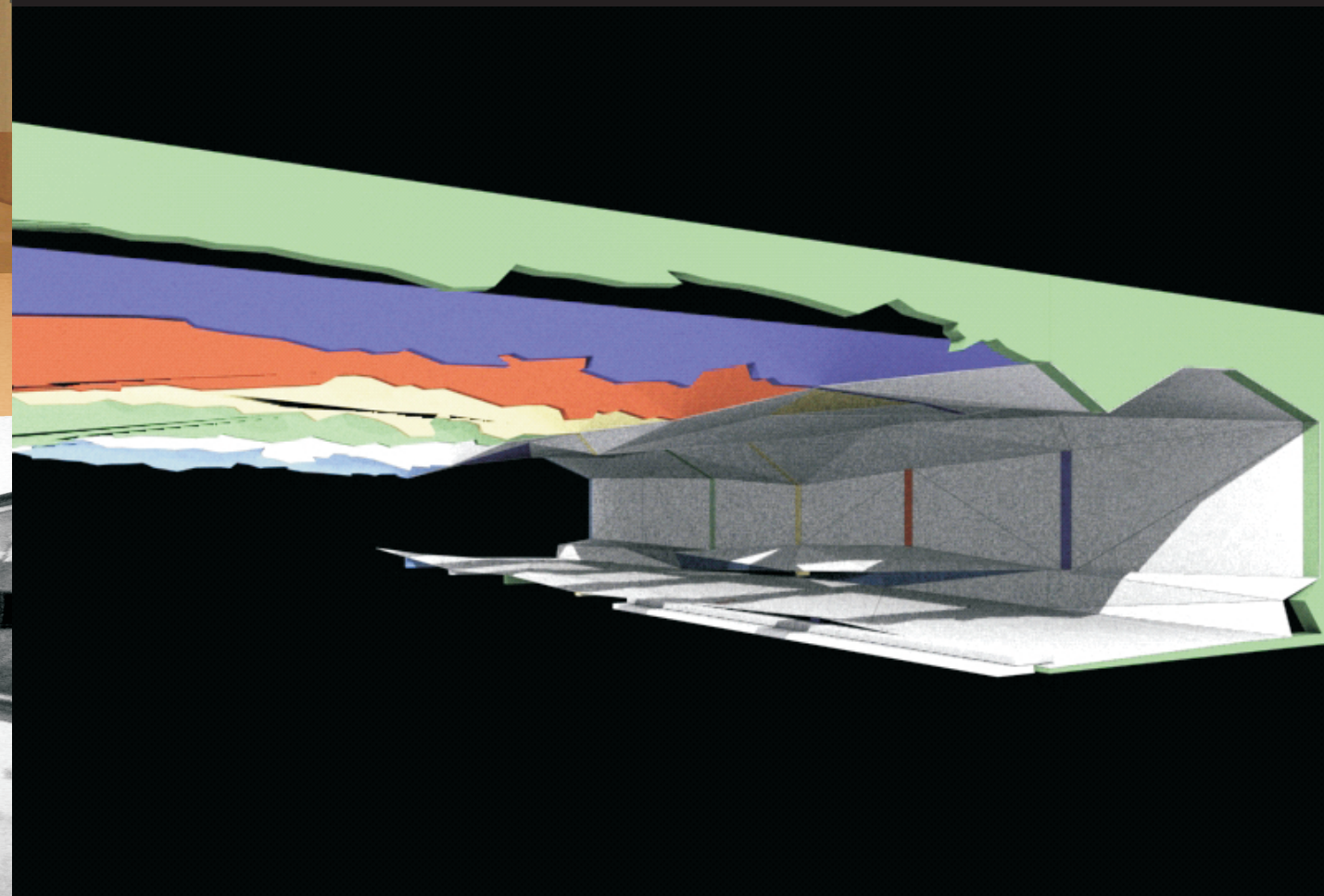


單元依整體意涵的純化紋理
抽象轉化後個別型塑 及 單元統一型塑
固定的方程模式生長
皆經斷落的連結 統整空間氛圍

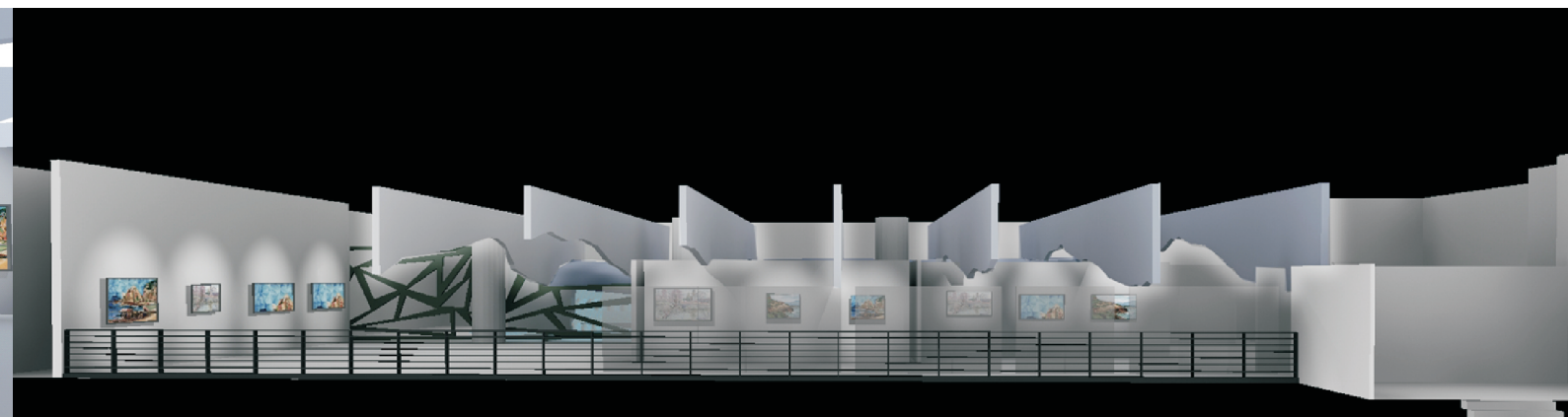
Units from the pure texture of whole ideal
Modeling individually after abstracted the unite and modeling
the whole module through the formula process of growth.
Through the connection of sections to form the space atmosphere

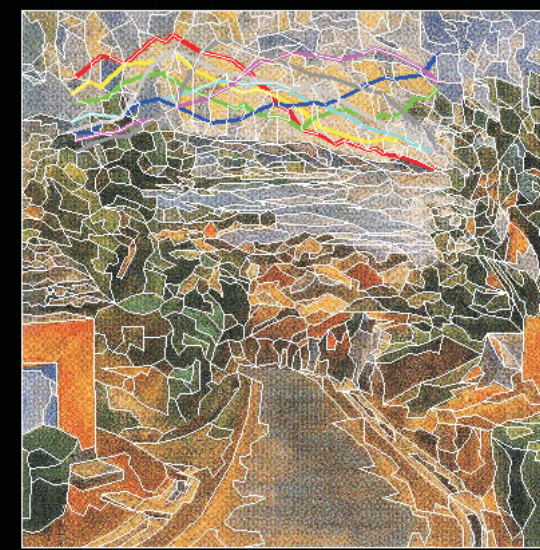
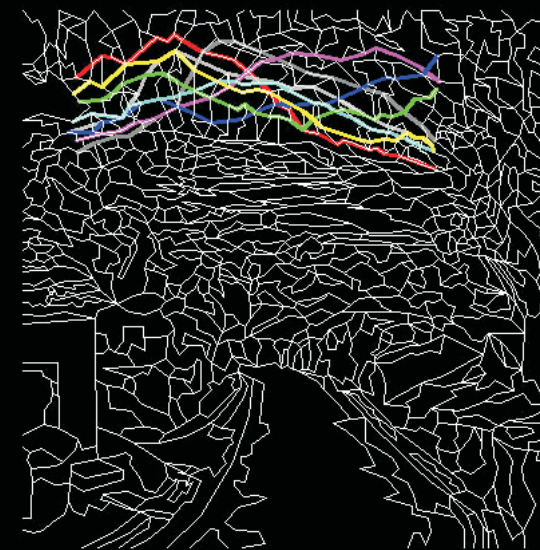
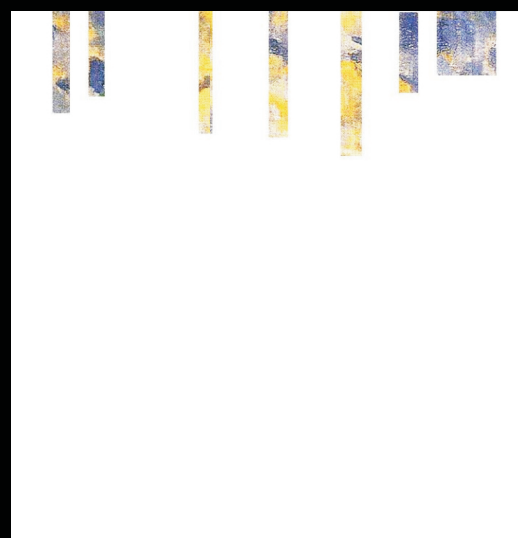
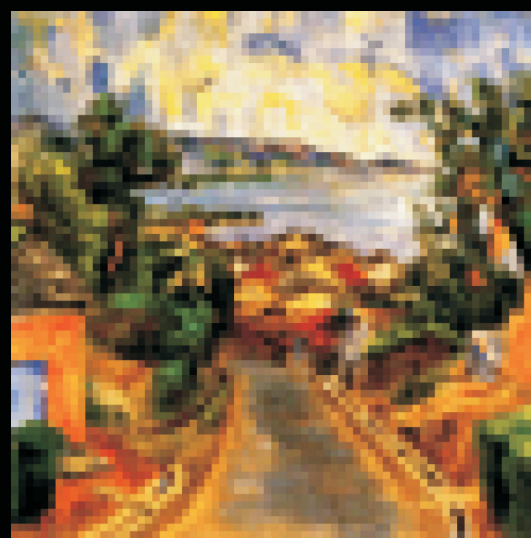
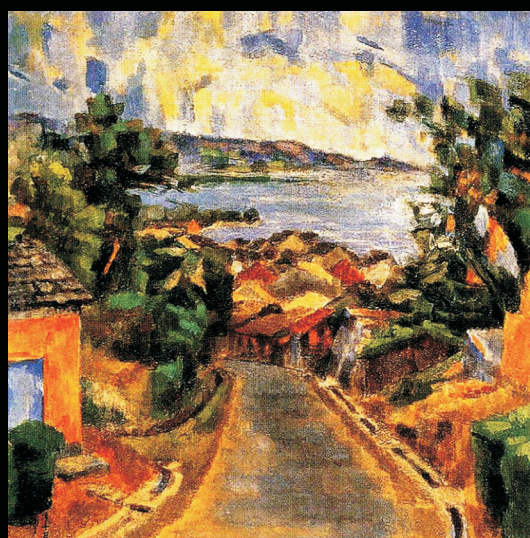
>>> 漸變的明日氛圍

國美館展場/傳統建築的新詮釋

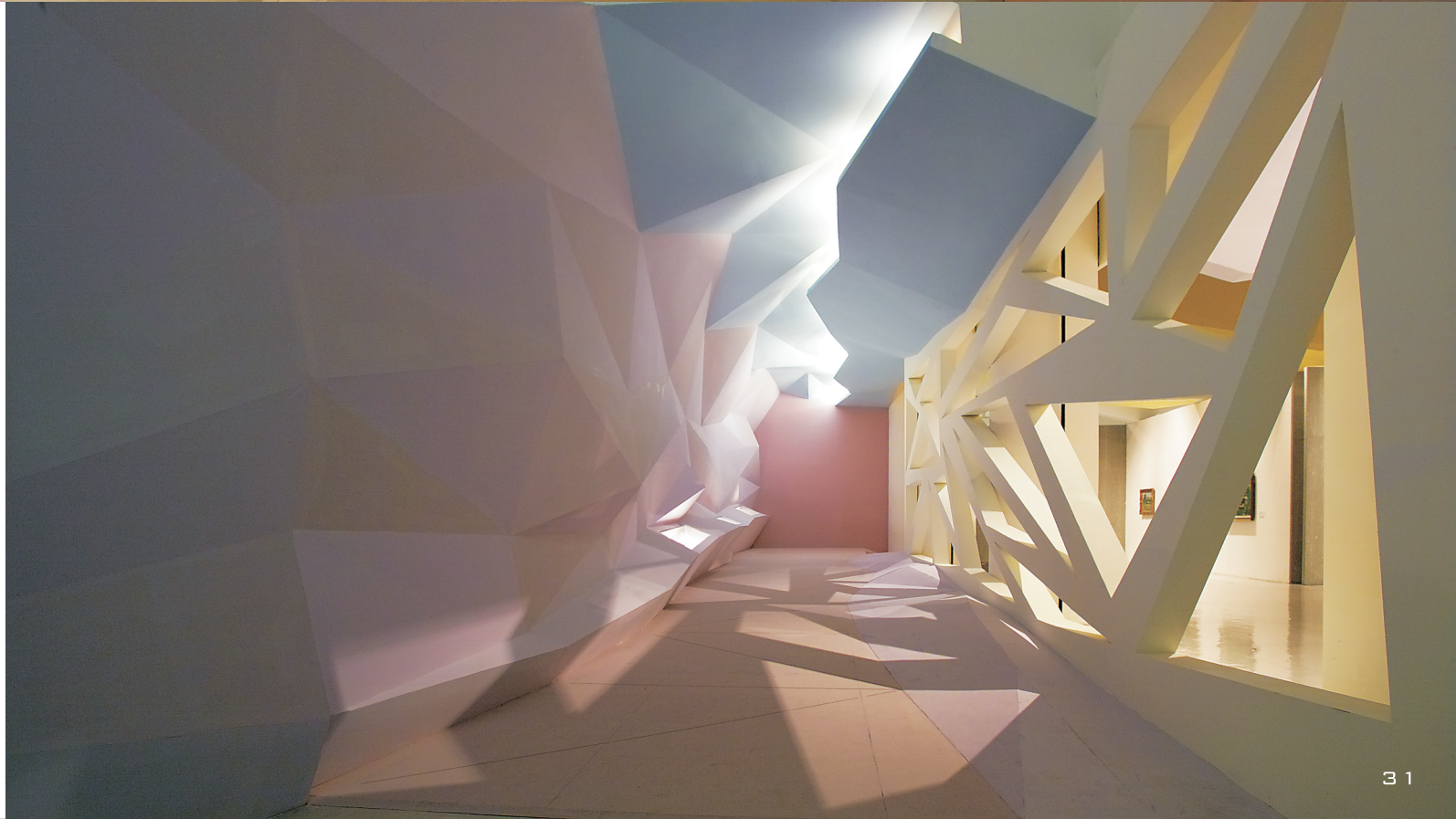
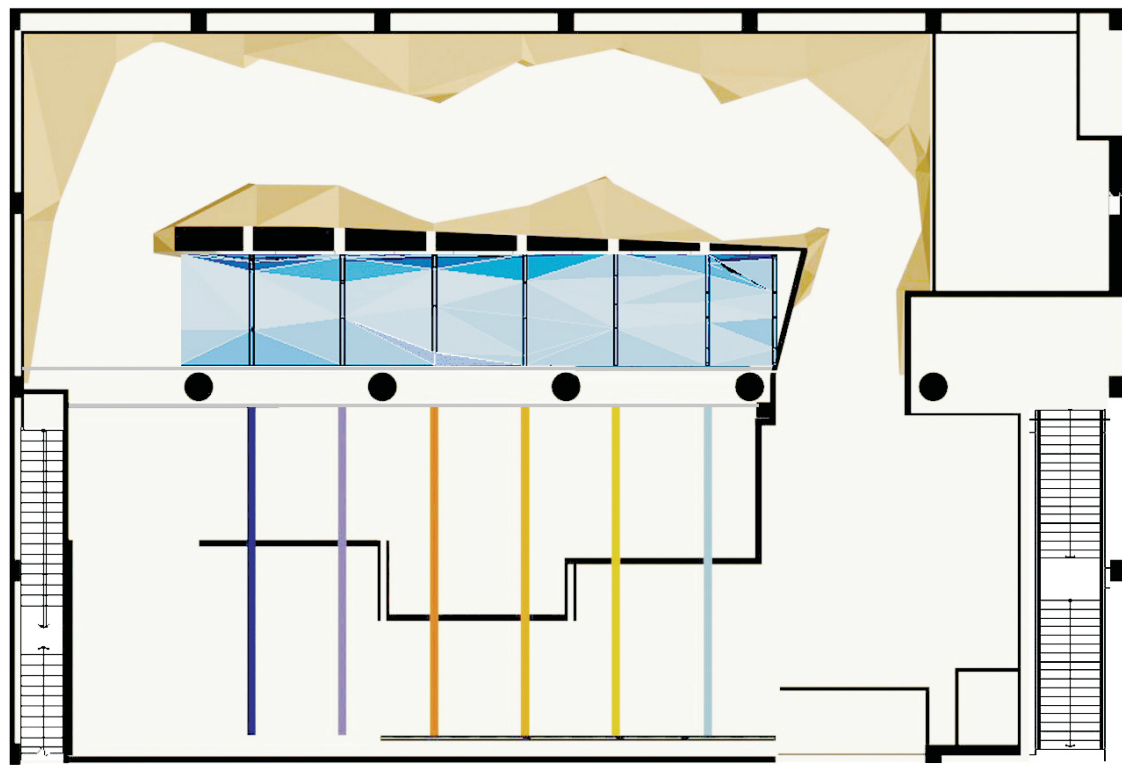
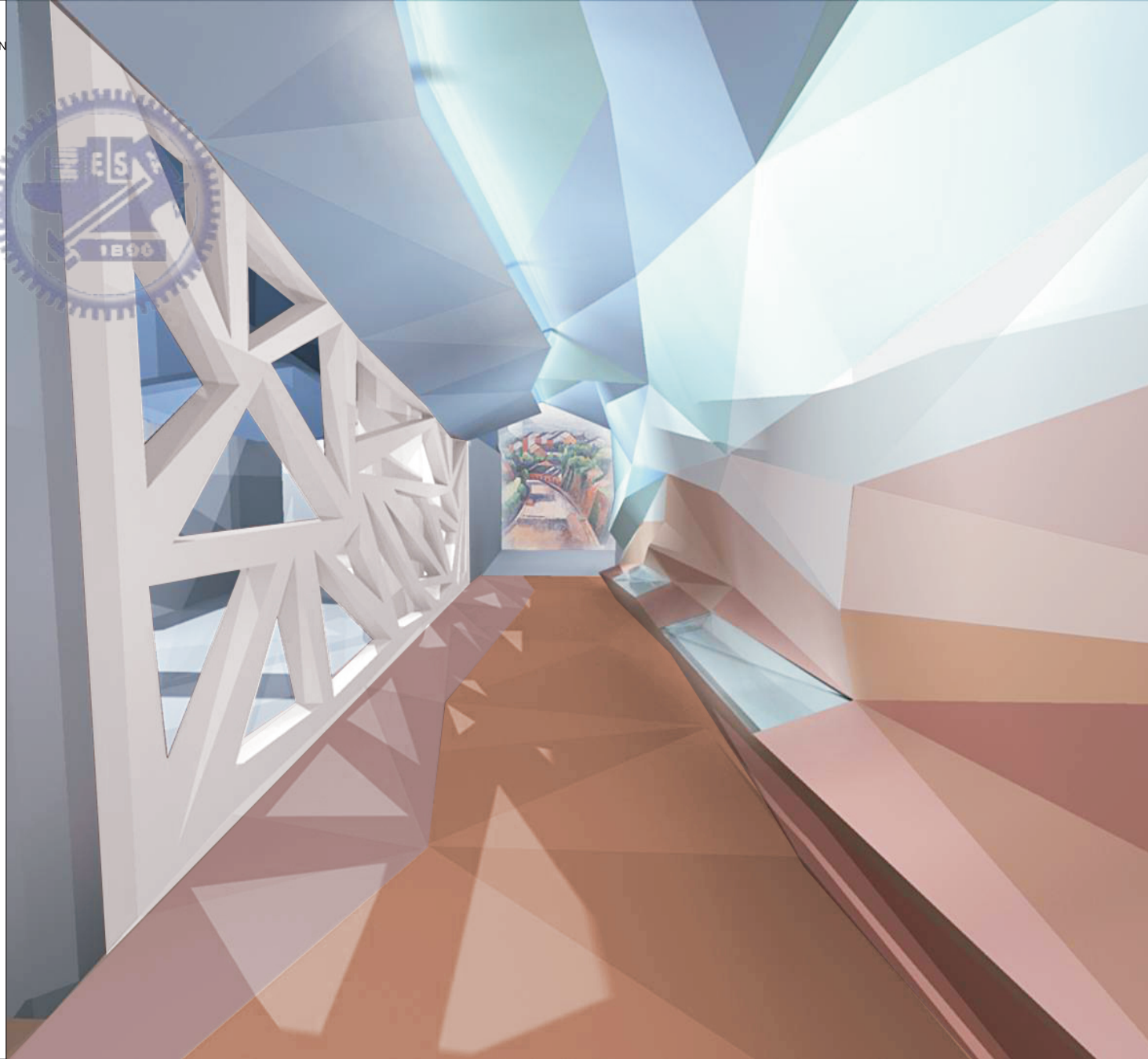


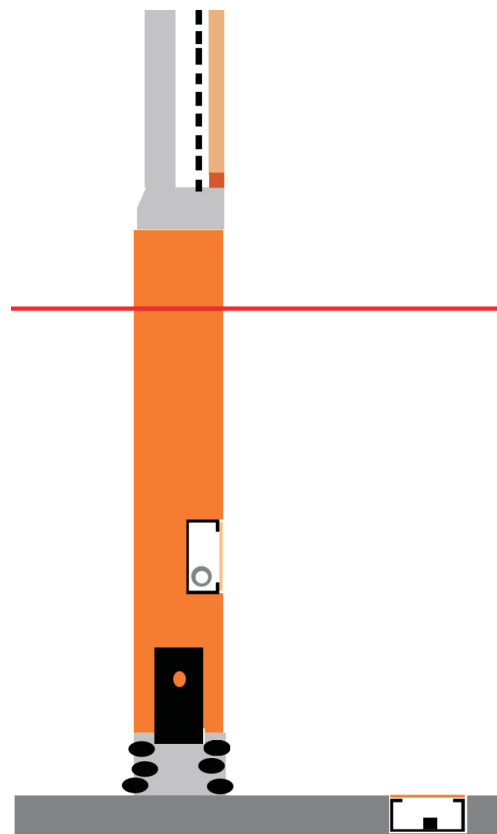
台中國立美術館展館設計
淡水下坡路





陳慧坤的繪畫折線
色塊的跳躍
創造建築結構菱線與空間氛圍
天空樑與時空廊

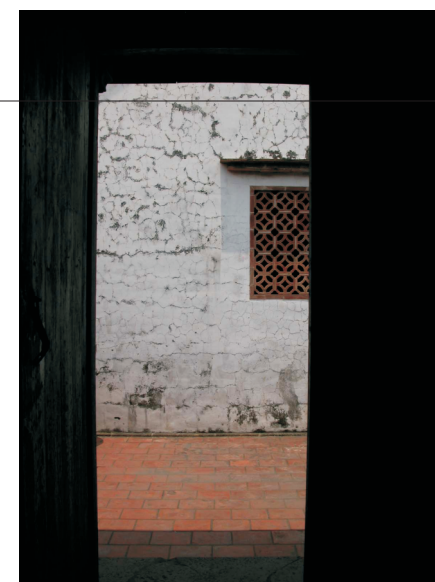
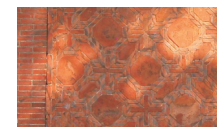
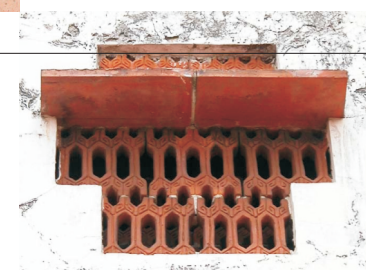
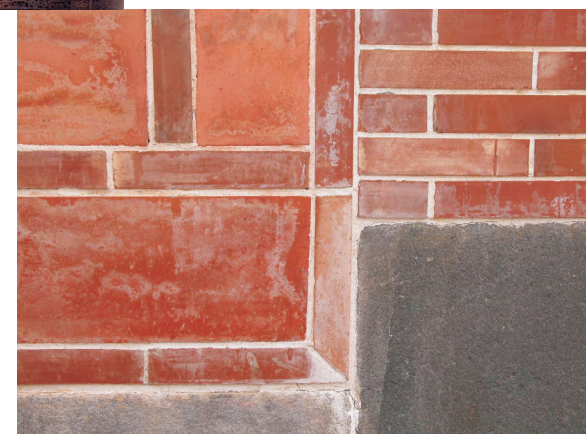
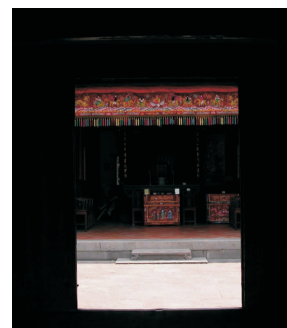
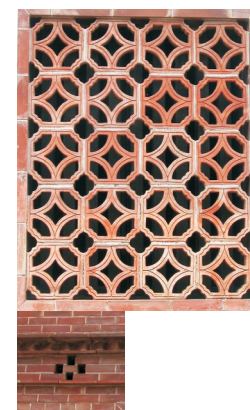
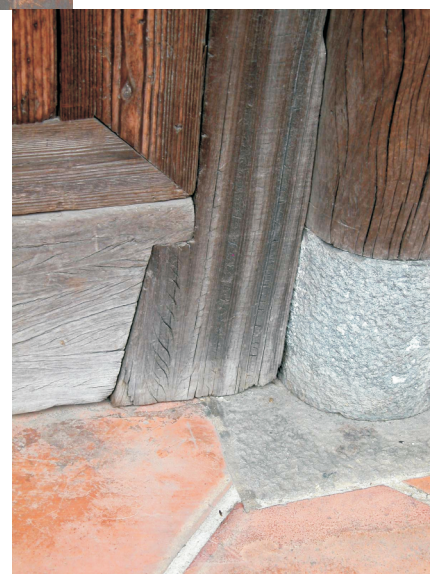


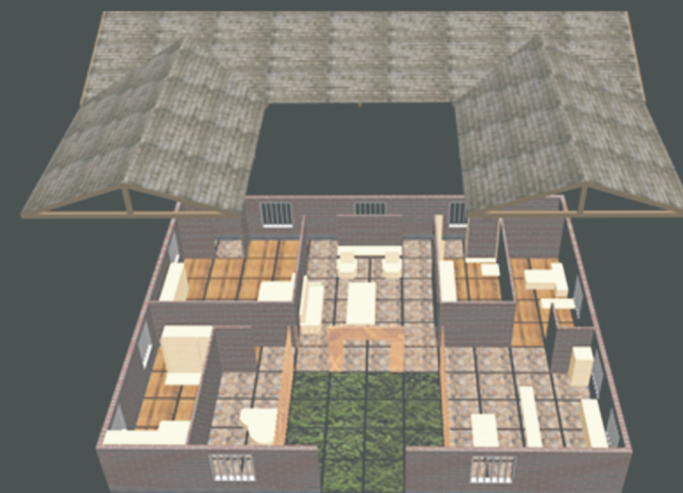
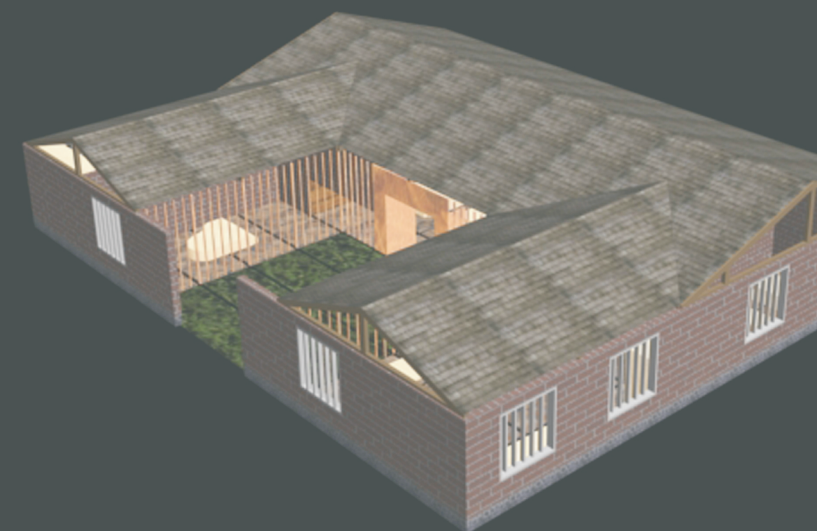
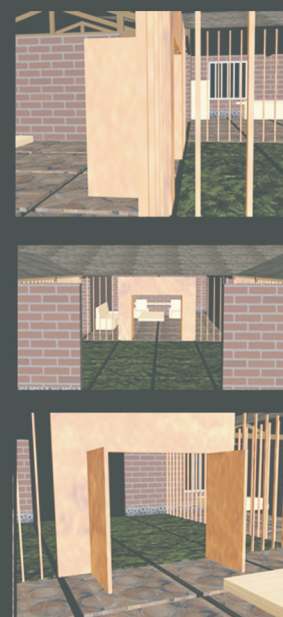
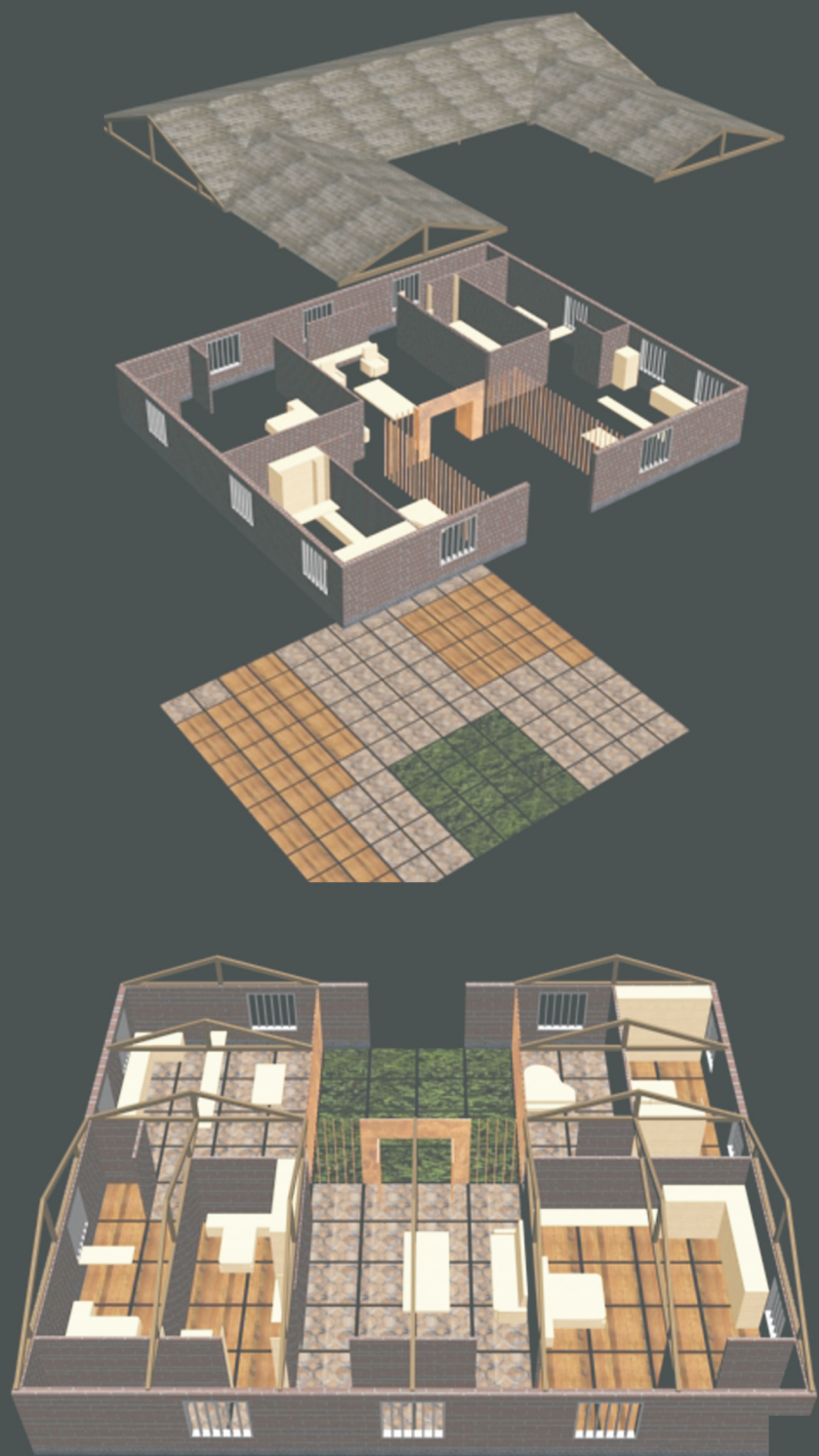


Chapter
2

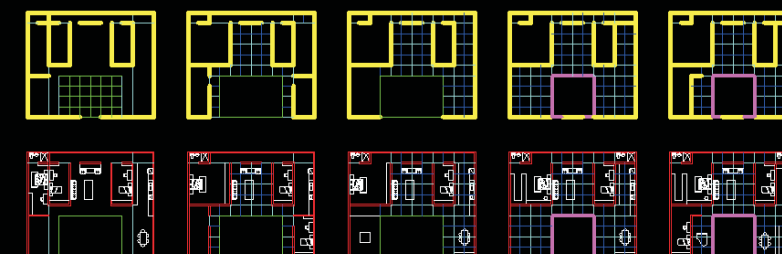
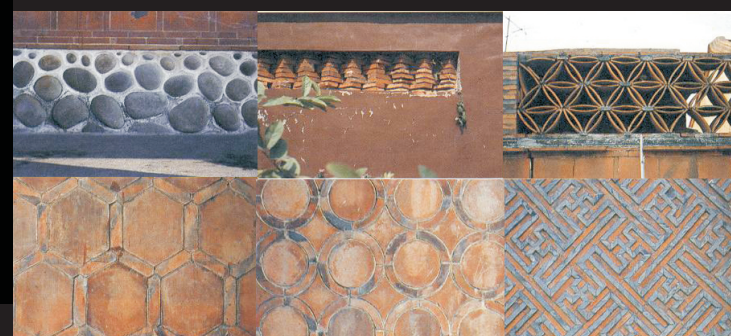
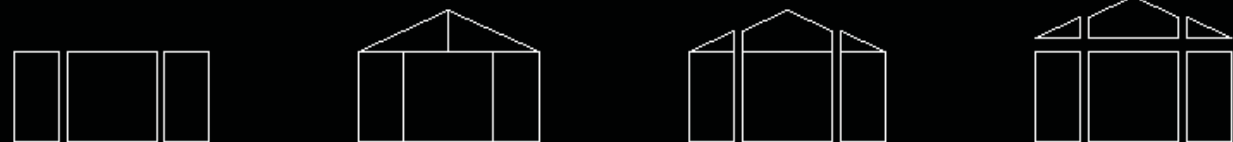
The
Future
Space
Atmosphere

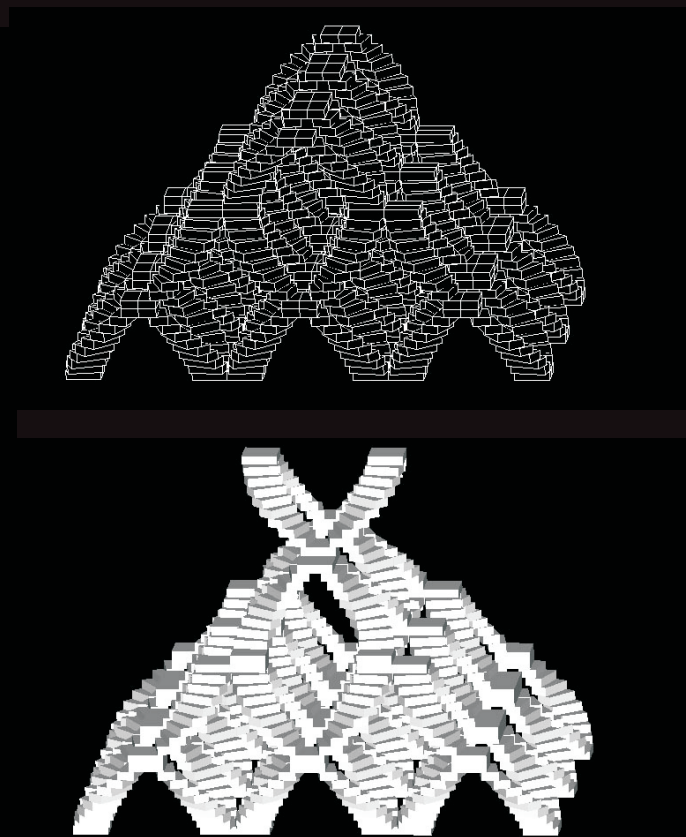
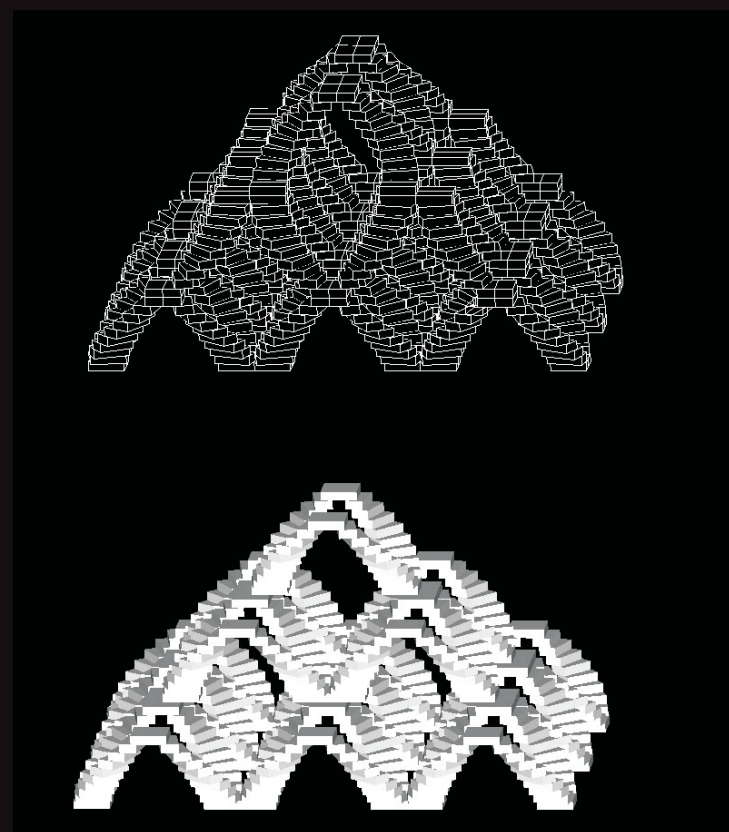
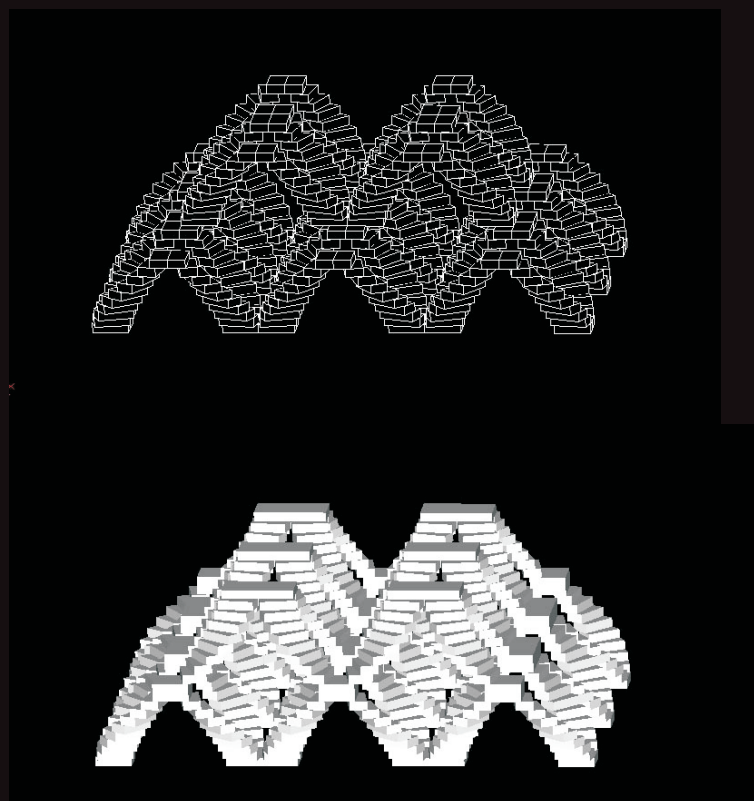
明日傳統台灣建築規劃
傳統元素的抽離與再製



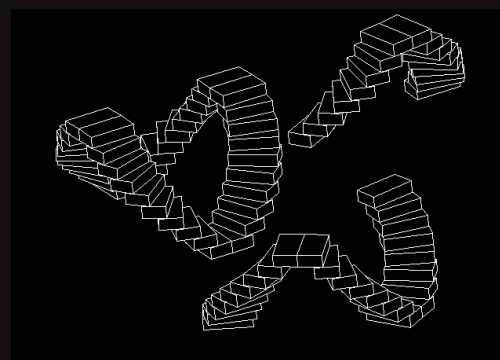
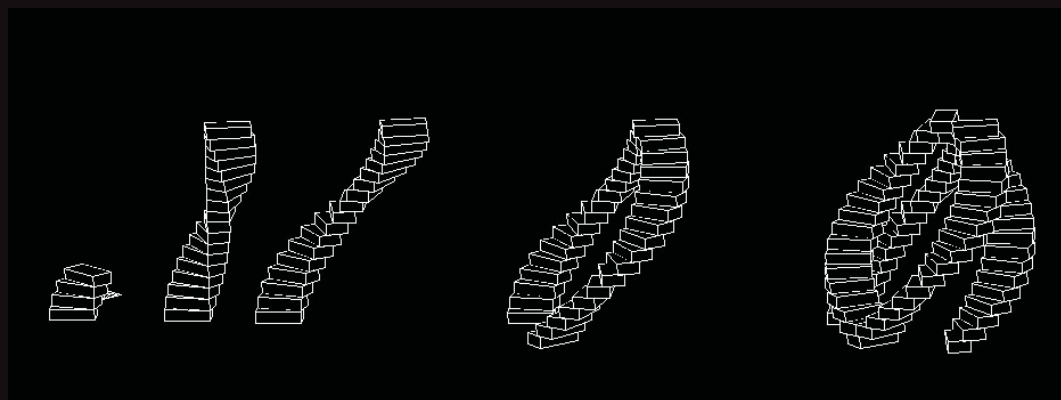


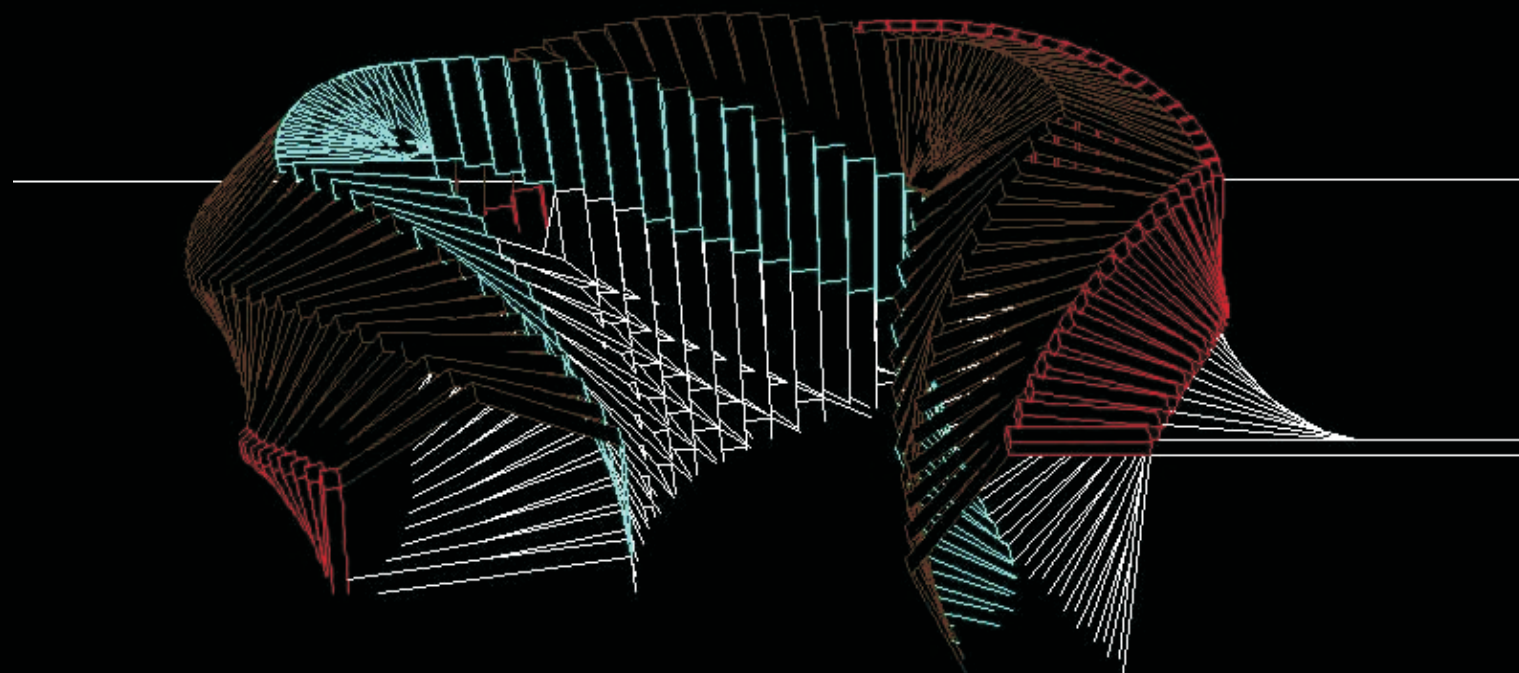
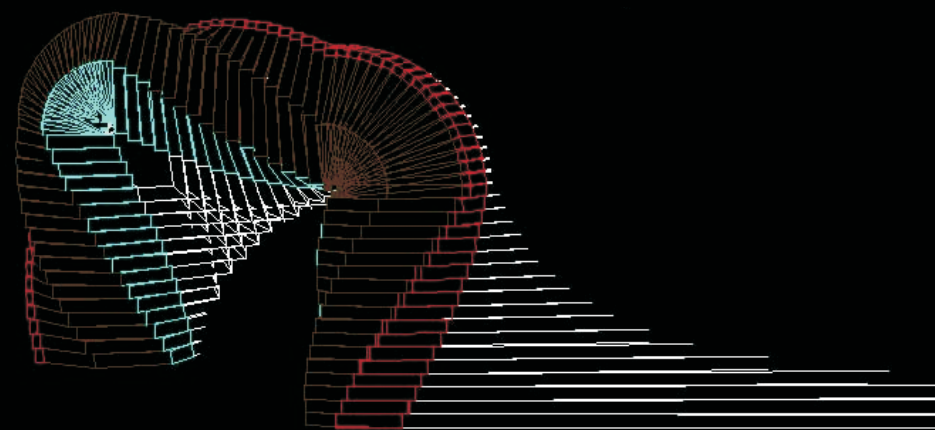
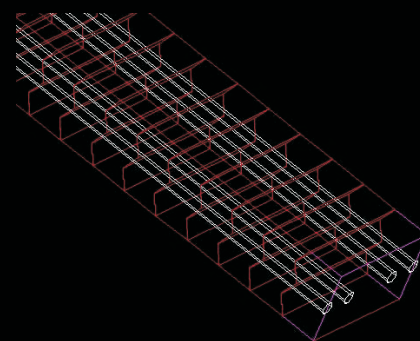
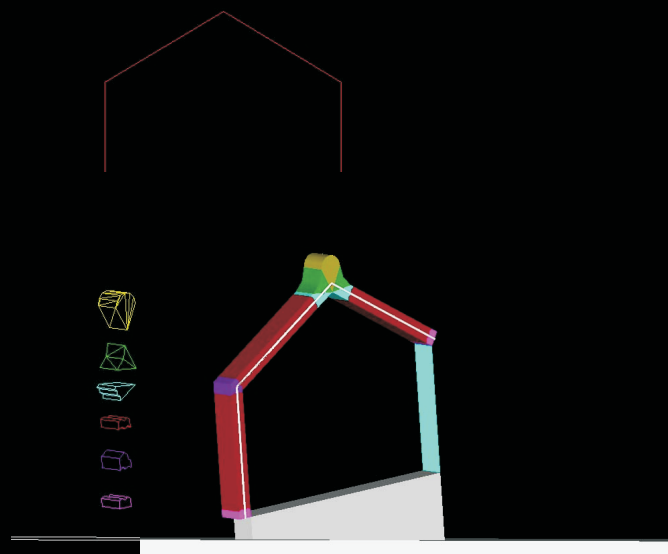
明日傳統台灣建築規劃
四合院仿傳統的新工法模矩設計



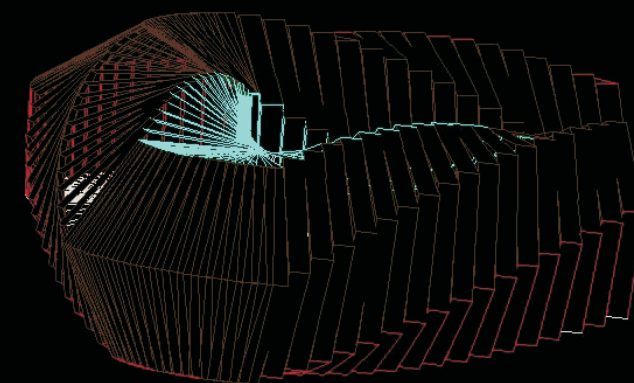
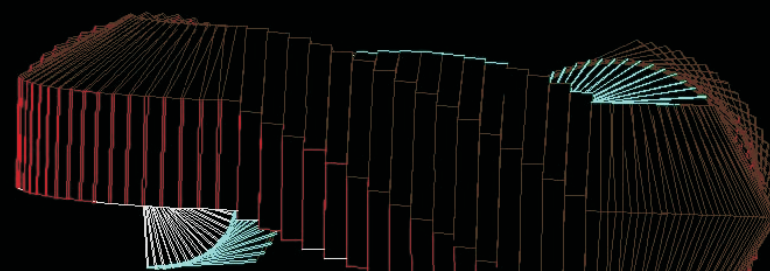
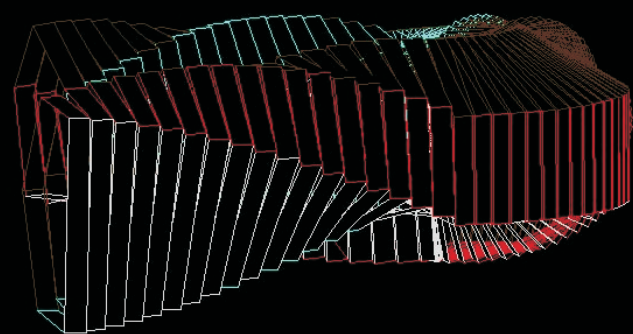


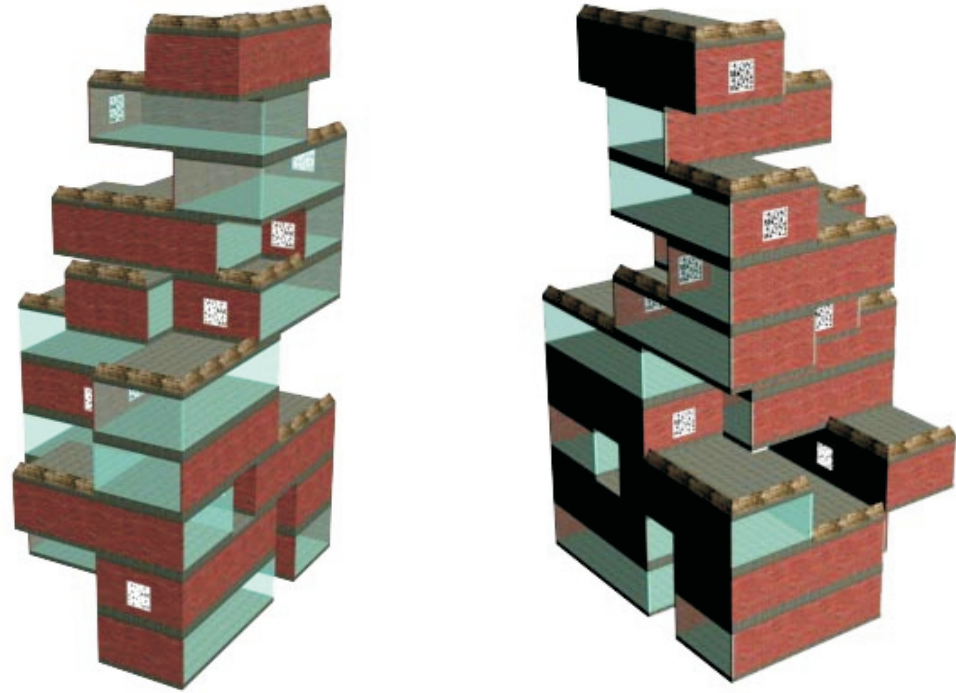
明日傳統台灣建築規劃
公共建築型體的實驗堆疊操作





明日傳統台灣建築規劃
旅遊資訊站的數位成型
傳承傳統材料氛圍
顛覆傳統四合院的空間尺度



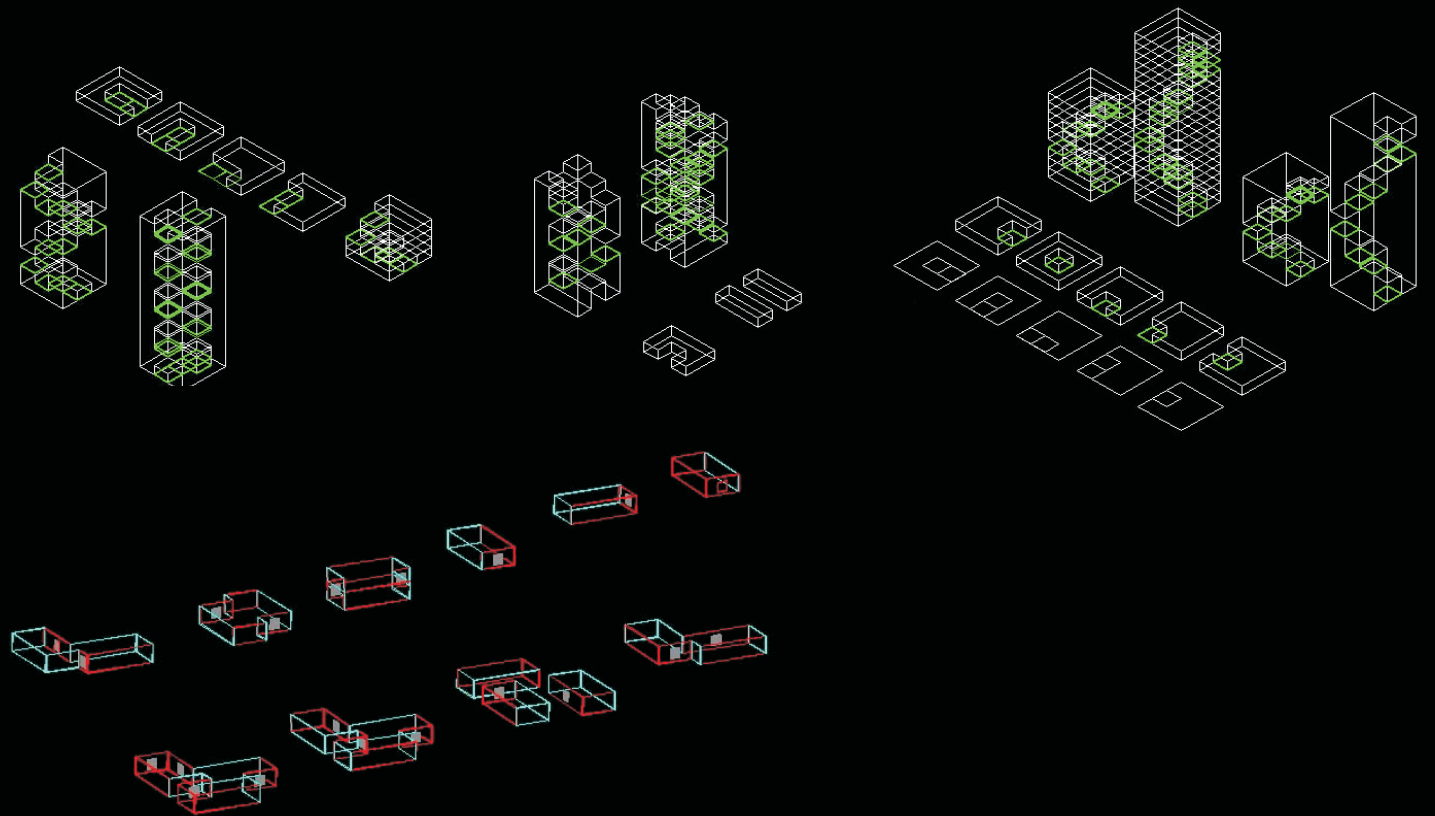


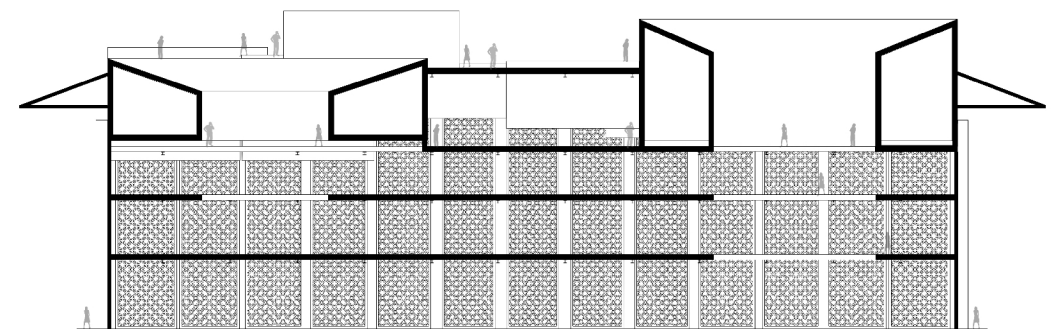
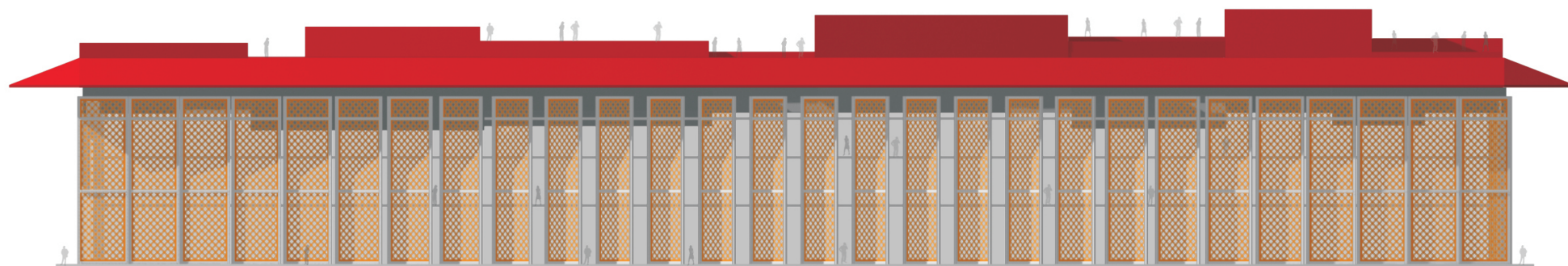
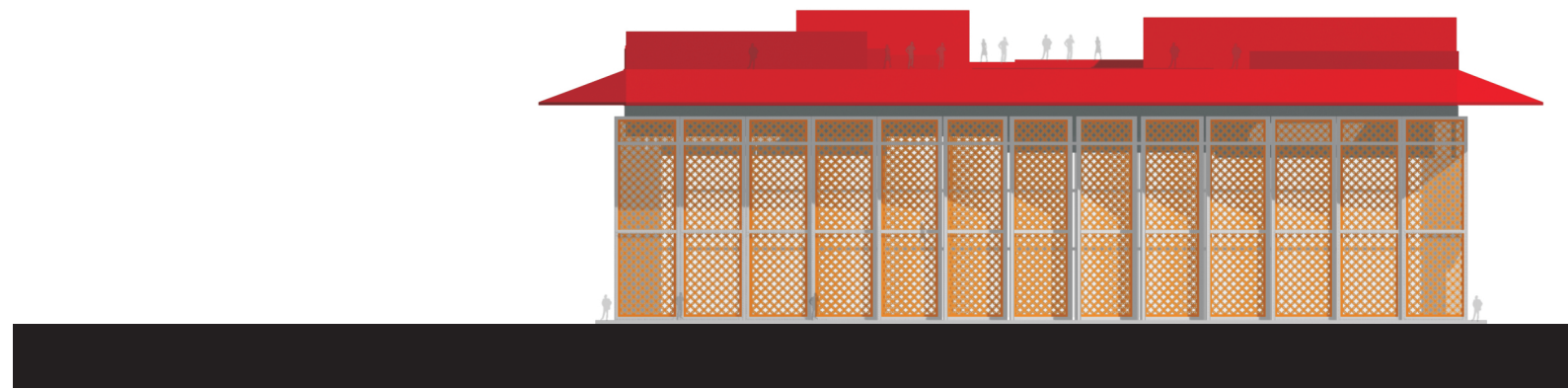
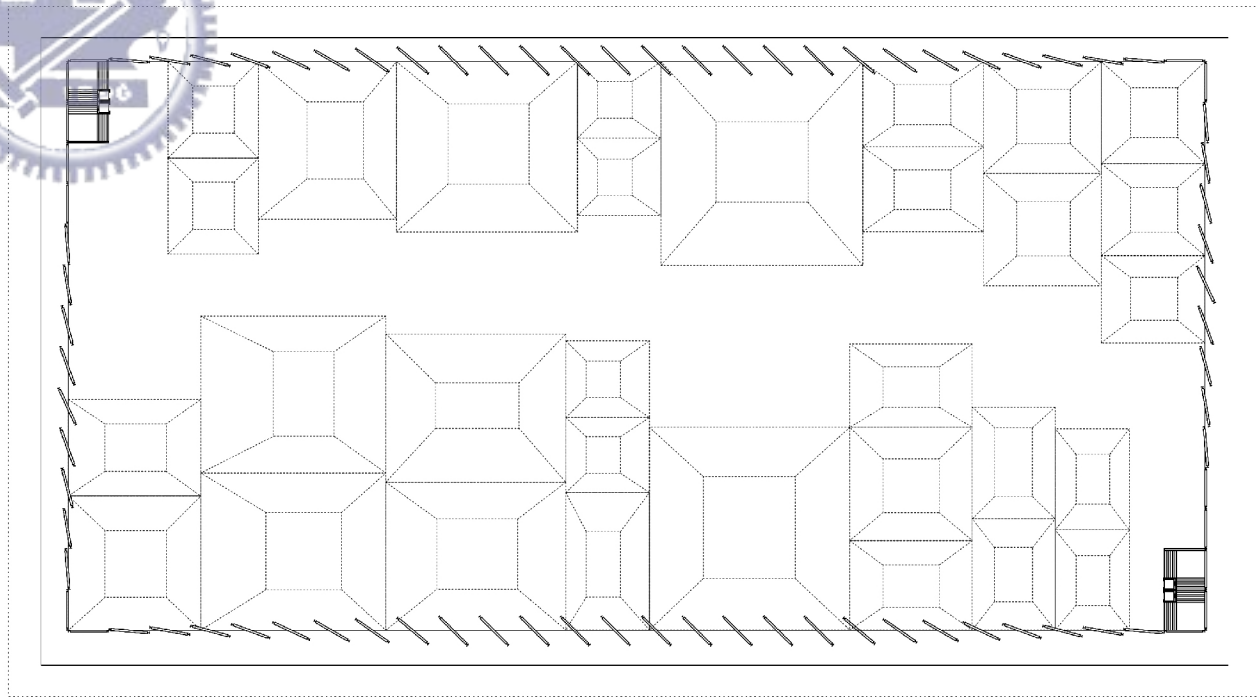
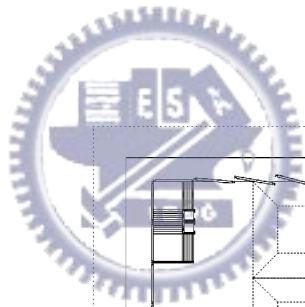
辦公大樓

Chapter
2

The
Future
Space
Atmosphere

明日傳統台灣建築規劃
辦公大樓如同疊磚一般成型
保留傳統材料氛圍注入新預鑄模矩化工法





參觀工廠
Chapter
2

The
Future
Space
Atmosphere

明日傳統台灣建築規劃
工廠設計類似的單元天井錯落如脊落一般
花格窗漸變角度排列
屋頂為參觀動線

