
TRANSFORMING CLUE

2005-2009
NCTU
CHUANG, C. Y
莊鎮陽



01 ENVIRONMENT

Photo transformation
Light casting
Apartment building

02 MOVEMENT

Tangle motion
Childbirth
Apparatus

03 CREATION

Robert Smithson
Mozart
Mrs. Wang

04 BUILDING

Indivisible
Renaissance

05 URBAN

New and old
Back land
Backdrop

CONTENTS



摘要

建築的創作常常透過不同事物發想或發現，創作各種充滿生命力的空間形式，因此在作品創作過程中透過多種不同的角度觀察與各式各樣的分析方式來創造出建築空間。基本上可被觀察的物件可由大到小，由靜到動。也就是由單一物件到個人行為動作再到城市尺度都可以是被觀察的對象。首先觀察環境的線索，但是環境的線索較難為抽象，所以在分析過程中將線索數值化並紀錄然後轉化，因此能夠使比較抽象的線索轉化成具體的空間。第二階段透過對動作線索的描繪，簡單地組構出人體工學上與空間的形式塑造。第三階段由概念線索出發的轉化方式，可以較真實的反應出使用者抽象地空間想像。第四階段由建築的線索轉化所構成的空間關係，可以清楚地將建築空間重新詮釋，並且符合原有的建築空間。第五階段由城市的線索轉化所構成的空間關係，可以反應出城市空間立面的關係與都市背景的背景空間。

ABSTRACT

The creation of the building often takes place and thinks or finds through different things, create various kinds of space forms full of vitality, so observe and create the building space with the analysis way of all kinds through many kinds of different angles in the course of works creation. Can can from great to being light things that observe basically, from quiet to work up. And then can be targets observed to urban yardstick to personal behavior movements from the single things. Observe the clue of the environment at first, but the clue of the environment relatively embarrasses abstractly, note down then transform clue number value in the course of analysing, so can make more abstract clue transform into the concrete space . By description, movement of clue, group is it happen human engineering go to form in space mould to construct briefly second stage. The third stage is by the transformation way that the concept clue set out, can be truer to reflect users the space is imagined abstractly. The fourth stage is transformed the spatial relationship formed by the clue of the building , can build the space to annotate again clearly , and accord with the already existing building space. The fifth stage is transformed the spatial relationship formed by the clue of the city, can reflect that the urban space sets up the Taxi relation and space of back lane of the city background .



01 ENVIRONMENT

Photo transformation
Light casting
Apartment building

02 MOVEMENT

Tangle motion
Childbirth
Apparatus

03 CREATION

Robert Smithson
Mozart
Mrs. Wang

04 BUILDING

Indivisible
Renaissance

05 URBAN

New and old
Back land
Backdrop

Photo transform



03

Light cast



Apartment building



數值化的環境線索分析

環境的線索轉化，先收尋環境中的顏色，透過對環境中的顏色來了解環境空間中的特殊性，尤其是有關於光與空間的互相呼應。二維的多彩油畫作為分析的起始，透過顏色的數值化，達到可被量化的空間關係，之後單純只分析暗與亮的關，所以只由光線來做空間的轉化，並採用蠟做為三維空間地轉譯模型。第三階段則是將分析環境的線索轉化手法應用於建築中，並利用環境中的空間數值作為擾動空間的線索，結合基地環境重新組構能夠反映基地環境的線索轉化。而透過環境線索的數值化，能夠使較抽象的線索轉化成具體的空間。

環境的線索轉化

Number value environmental clue analysis

The clue of the environment is transformed, accept and seek the color in the environment first, through finding out about the particularity in environmental space about the color in the environment, especially have it about light and concord of each other in the space. What the two-dimensional colorful oil painting conduct is analyzed is initial, pass the number value of the color, it reaches to be can spatial relationship of quantization, later simple to analyze dark with imprisoning on only, so only the light makes the transformation of the space, and adopt the wax to be made and translated models for three-dimensional space. The third stage is that the clue that will analyze the environment transforms the tactics to apply to the building, and utilize space number value in the environment to combine the base environment and organize and construct the clue that can reflect the base environment to transform again as the clue of space of perturbation. And through the number value of the environmental clue, can make more abstract clue transform into the concrete space.

PHOTO TRANSFORM IAN STUDIO
TOOLS COMPUTER
MATERIALS PAPER & LIGHT
REFERENCES OCEAN PARK
2005 FALL NCTU

LIGHT CAST NANCY STUDIO
TOOLS PICTURES
MATERIALS WAX
REFERENCES SUNRISE PICTURE
2005 FALL NCTU

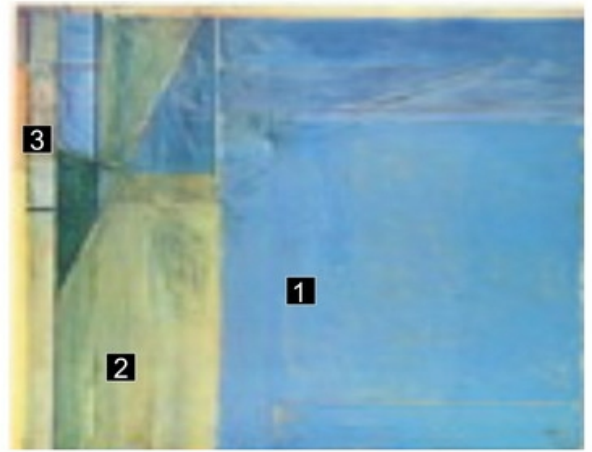
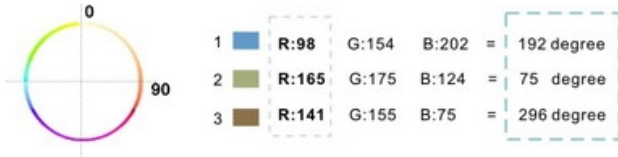
APARTMENT BUILDING BORDEN STUDIO
SITE NTHU EAST AREA
CASE STUDY APARTMENT
2006 FALL NCTU & NTHU



PHOTO TRANSFORMATION

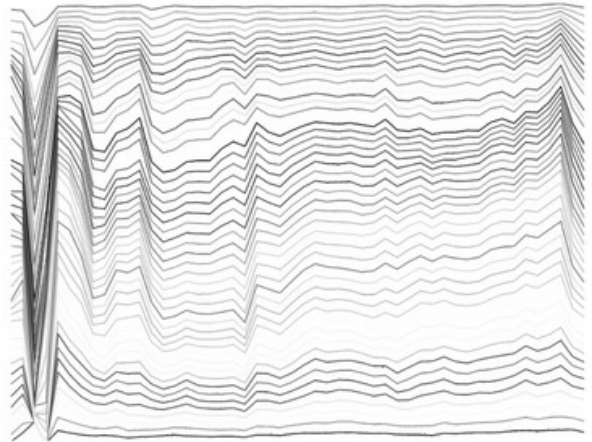
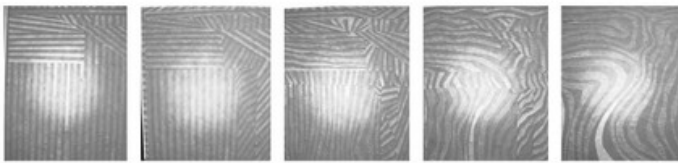
Transformation of the colorful picture

This is an oil painting drawn by abstract painter, the content is a series of paintings about ocean park which analyzed this piece must find out about color meaning and reason of the composition and representative at the same time too at full of colorful picturing to begin. Begin to create and understand the meaning that match each other between author's colors used from these clues, such a behavior react into rule and way of creation designed to arrive, take a sample and note these RGB number value represented ordered color lattice, and transfer these figures to translating into the relation of the angle on the level.



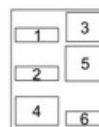
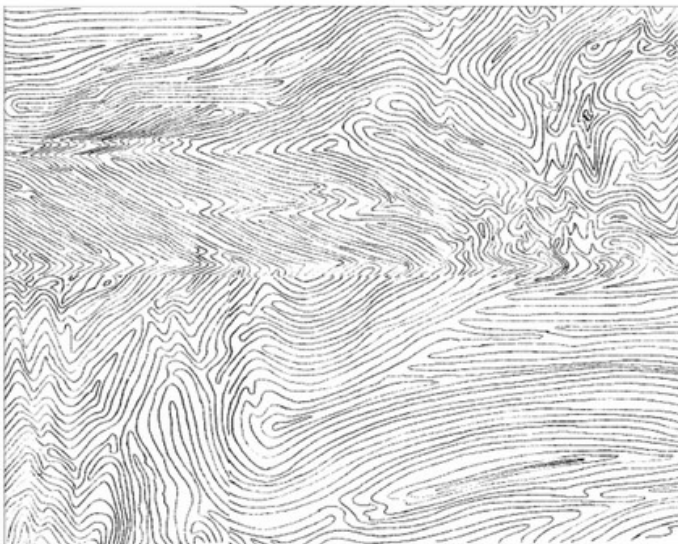
Sample of different levels

The picture is a file of digitization, there is relation of analyzing degree, so continue trying to have it about the experiment of analyzing degree, include the changes of five kinds of levels altogether, so very apt to find out that different analysis degree will form different results. But it seems that five kinds of levels can all represent spirit annotated, nothing but the difference between straight line and curve. Color number value course, the right and wrong expectancy design discussing, if the original picture is not a square, the physique of geometry, then he can express with the arc too. The different colors according to line different angles produce original color meaning.



Representation of the plane note

This picture makes use of sample of the fourth level to do for the basis, almost 1000x1000 numbers value are clicked, after utilizing artificial way draw angle of line, can join line segment that join but level annotation explanatory note and then of space that form.



- 1 color angle analysis
- 2 paper model
- 3 Ocean Park picture
- 4 hand drawing
- 5 excel line illustration
- 6 space model

Three-dimensional representational note

Utilize excel in the computer to regard the digital materials as the continuous composition relation and set up the lines separated, turn after and then cutting off these lines, make the level space transform into the spatial relationship of 3D. From section, it can nearly find out Ocean Park that pursues to appear on the surface.



LIGHT CASTING

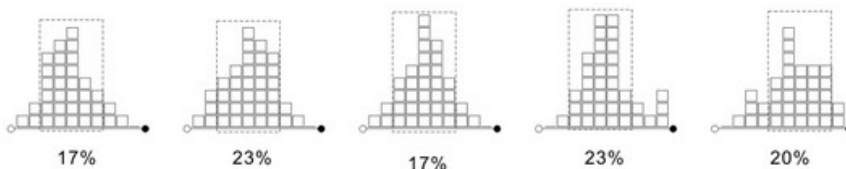
Transformation of the setting sun picture

Concept of the transformation to the color before continuing, the ones that think deeply and pursue in the surface image are black and white. The limitless one are divided while lying between black and white, can change to some extent because as the difference that is counted, but here try wicked to divide into 10 grade divide, make picture to be easy to distinguish dark to compare with white degree between getting white. The beautiful the setting sun photo can be an image annotated again, because turn from daybreak into night, through the controlling black and white of whole tone. So collect the setting sun, Taiwan of all parts, including the west sub gulf, high American wetland wait for famous view the setting sun beauty spot and make photo these gray steps punish.



The gray proportion of steps is counted

The result that the photo after the gray steps and mosaic are dealt with counts shows, black and two kinds of white the place similar to proportion of the central place extremely, on average is 20% for the whole. It is all the tone with regular proportion that it is beautiful so it is not difficult to understand the setting sun, if apply these proportionate relationships to the space, can demonstrate the ambiguous space like the setting sun.



The space model making

Regard ice-cubes as the proportion of the extreme part, put the case, utilize 8 while analyzing: 2 relations water the wax and take shape, like analyzing that the pattern is general, although the ice-cubes put are all 20%, but design of ice-cubes, of different size to will change result that water, so 3 models made altogether, wrap up and blow trash ice, a piece of ice, square ice. And observe and can relatively make to count more trash ice out the dubious relationship like the setting sun to take a sample according to the model coming out, but square ice and pieces of ice can body perform the space sense.



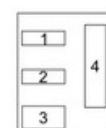
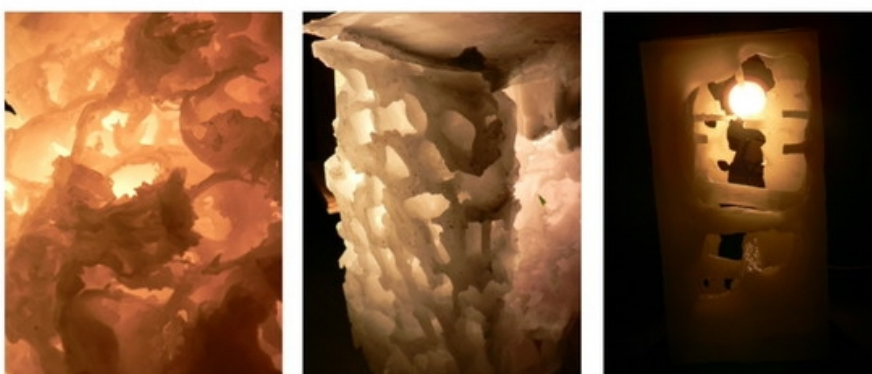
80%WAX & 20%GRAIN ICE



80%WAX & 20%MEDIUM ICE



80%WAX & 20% SQUARE ICE

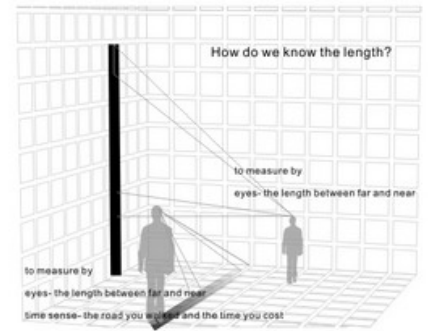


- 1 setting sun picture
- 2 %gray analysis
- 3 models with light
- 4 wax models

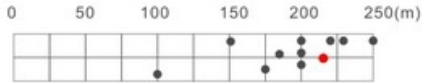


Base information is applied to the simulation software

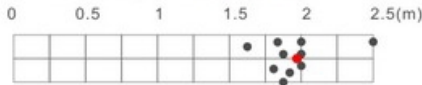
Full of things that a lot of people lived in the inside do not know in the base, for example how on earth this long road is long. How high the wall is, how high the house is, there are several trees, and there are several street lamps. These whether occupant will see thing that predict every day nearly, counted to relatively little error have from relation, but the analysis that the quantity accumulates is not perfect on being such. While utilizing the computer to imitate the analysis of making of cartoon, for the spatial relationship of echoing the base to be forgotten, putting into these base figures regards as the factor of influencing, make the base produce the perturbation change.



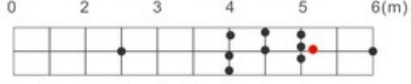
What is the length of the **road** ?



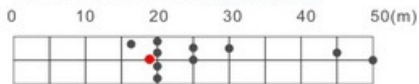
What is the height of the **wall plane** ?



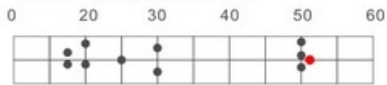
What is the height of the **highest house** ?



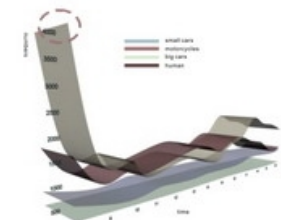
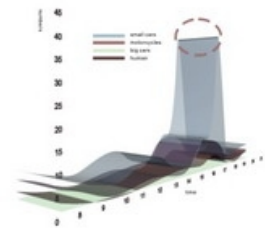
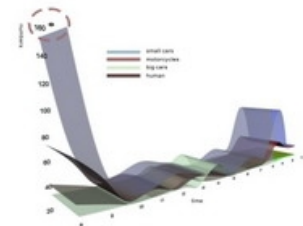
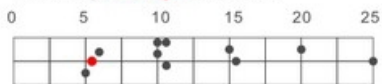
What is the height of the **highest tree** ?



How many **big trees** are there?

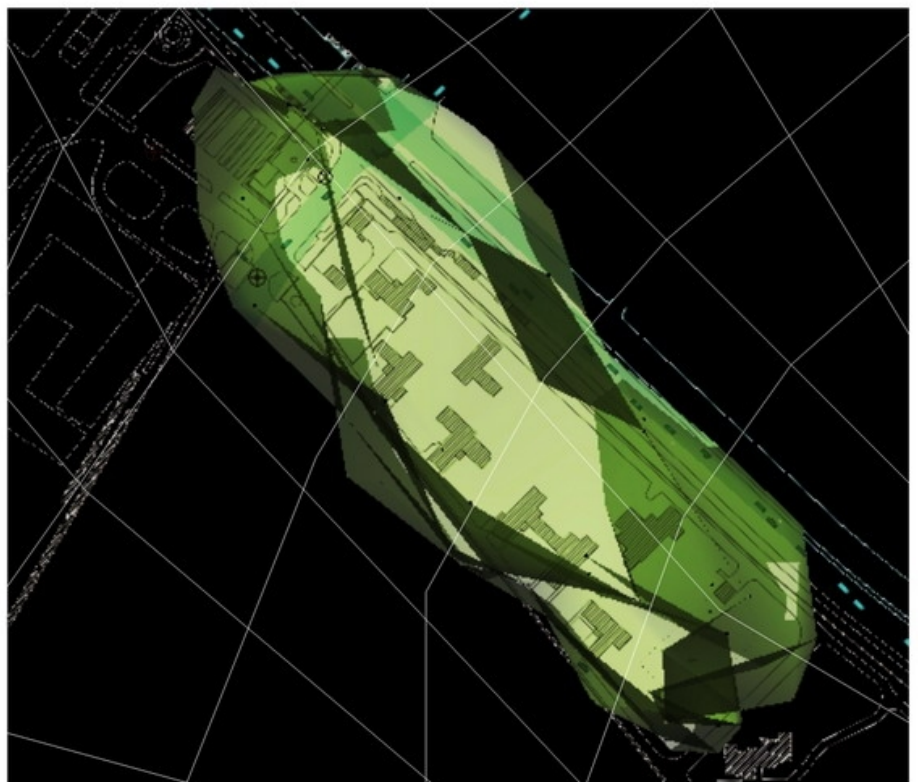
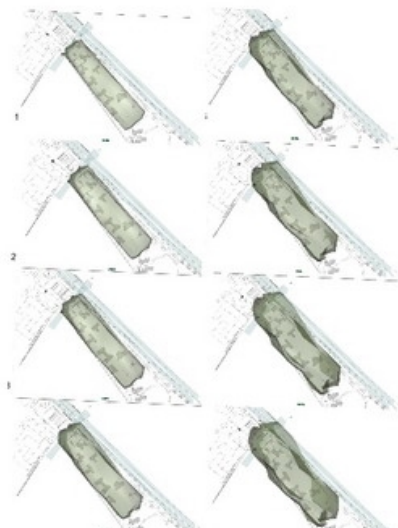


How many **street lights** are there ?



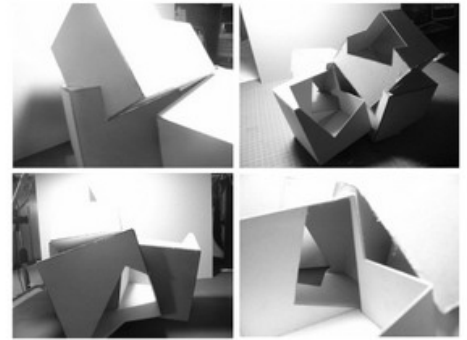
Site - 3D shape transform

to use maya turbulence

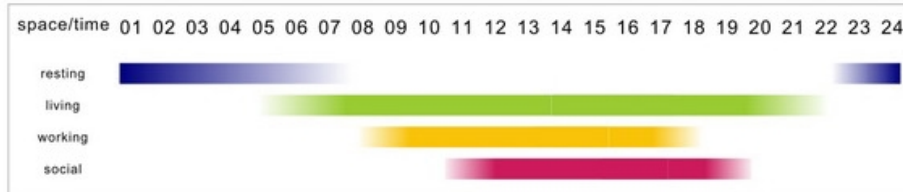


The user's life investigating and analyzing

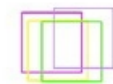
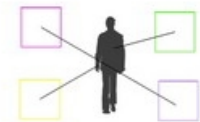
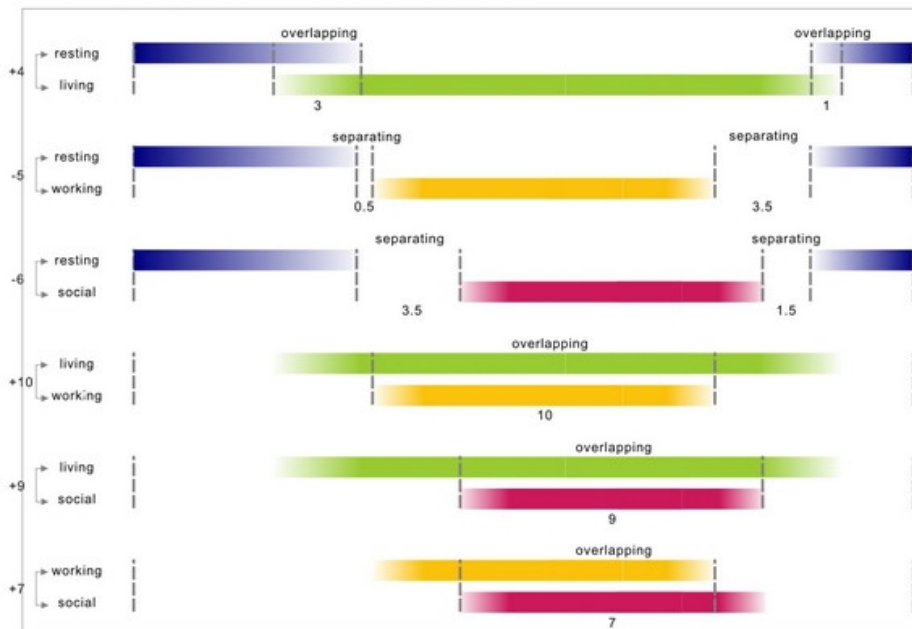
Is it investigate one life of Professor find some interesting figures to utilize, and use these several sons to discuss that the unit of a set house make up the relation. By investigating, can find out that a professor's life has a lot of overlay and occupation mode separated so form spatial relationship of life with such a relation. The behavior of one day is 24 hours basically, so collected the time figure in forms, and count, coming at a time or negative value while finding, utilize the digit tool to make operation (MAYA) . Classify the space with the color, in order to have a rest in the space the purple, the yellow is a workspace, the green is the living space, the red is the communication space.



One day life illustrations



Overlapping and separating illustrations



Make a little separation by the original relation

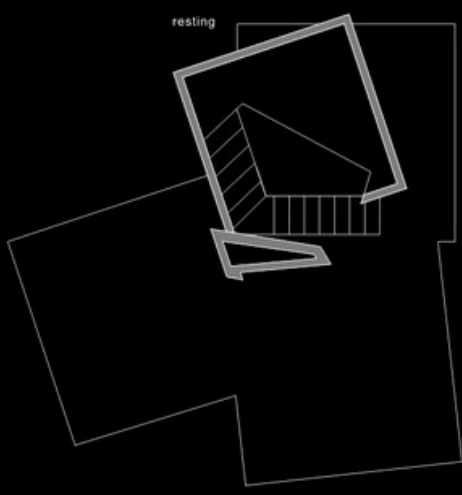
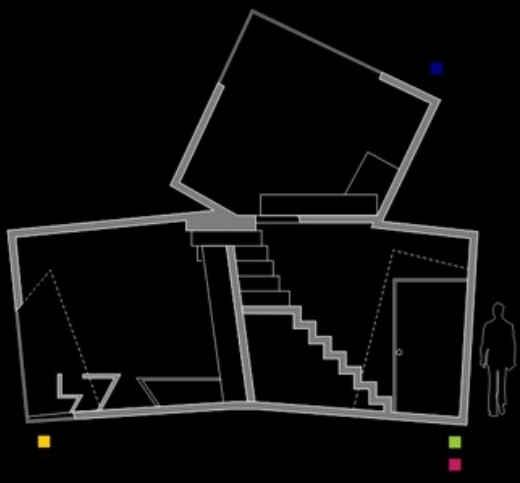
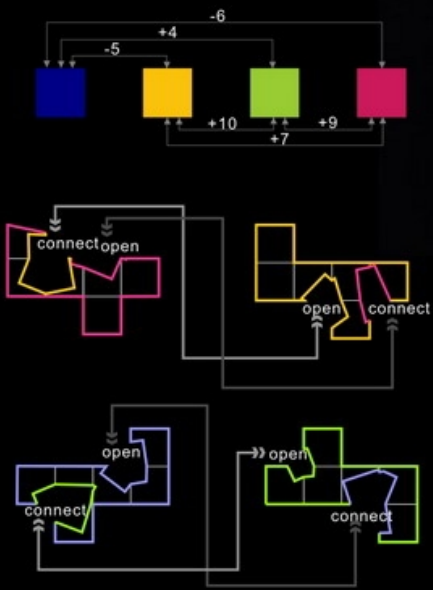
The function merging and assigning

Utilize using the time table to define the meaning of every space of investigation space, and change the space into the relation quantized, reach the quality result of cooperating with different life styles. The operation mode is mainly operated and attracts each other or exclusive with NEWTON function of MAYA, besides basic overlay and separation, the specific space has a kind of definition while using or in not using, so come as the harborage of the space and meaning pierced through according to such time amount, make use of this definition to go out of a lot of pass ways or openings to the outside.



Simulation and operation of the space

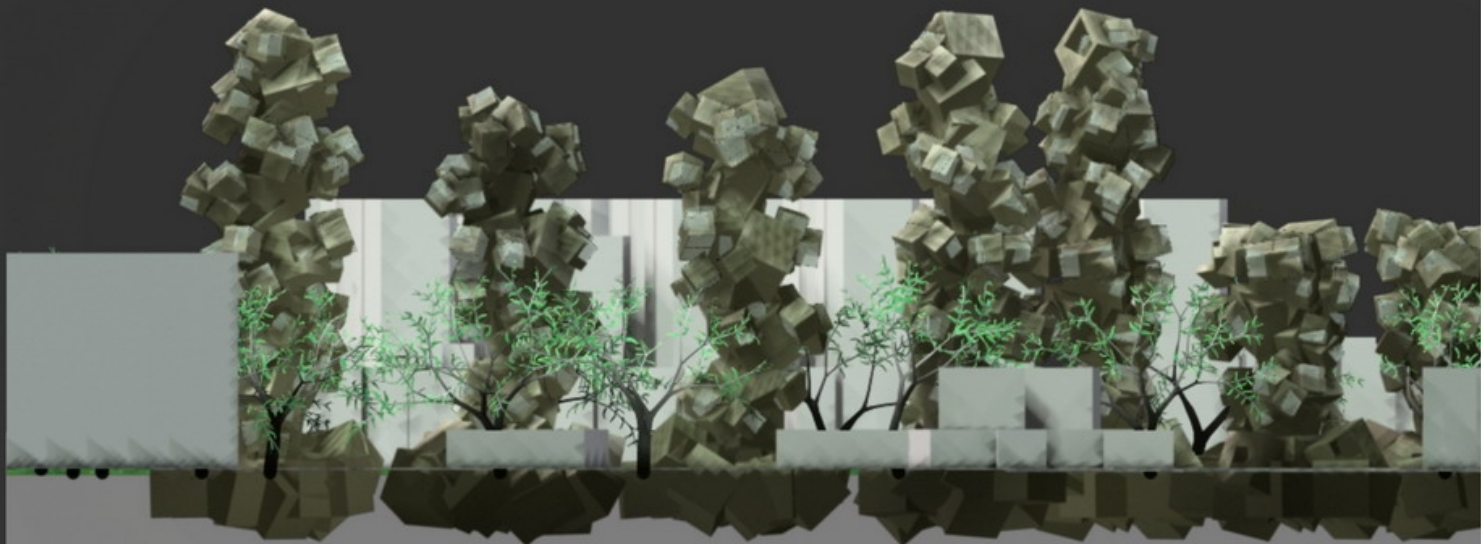
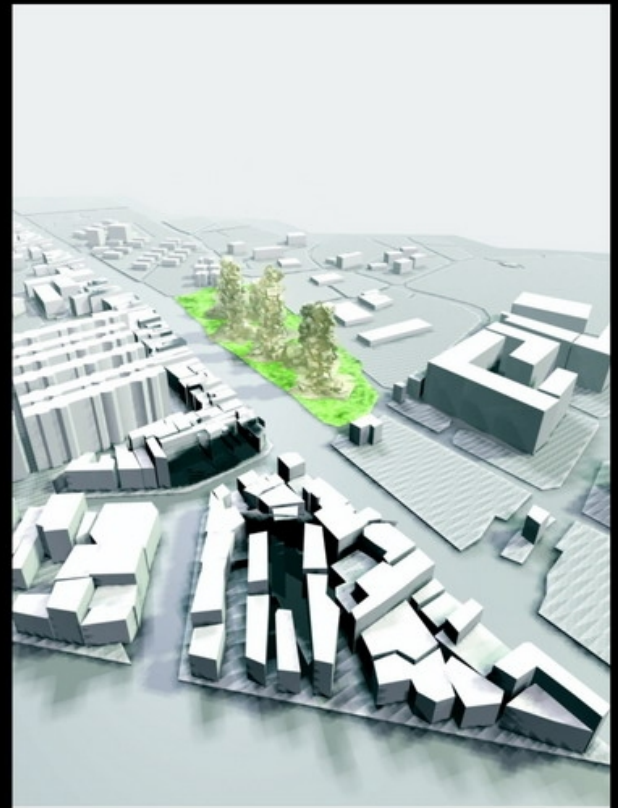
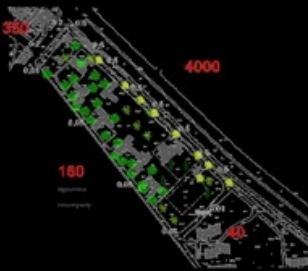
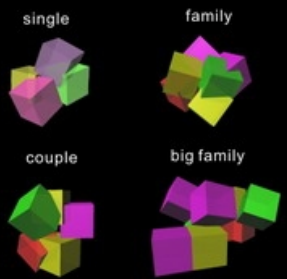
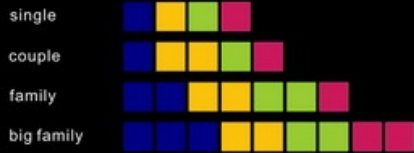
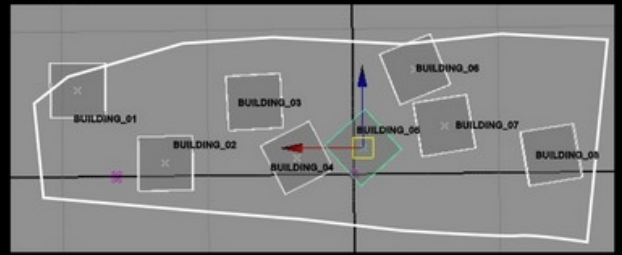
The part of the furniture utilizes the surplus material lost deducted, put into the relevant space again, for example the work is very close space to the social space, utilize literary composition material deleted, it will be originally the seat that the things of the workspace will be made into the social space, the things in the originally social space will be replaced into the desk of the workspace, express the meaning in which the space interlocks each other. The relation pictures of the building amount body and surrounding environment formed, is really a very big quantity body, but clear heavy east institute already existing and tree a lot of, so in change trees turn on and join base with the wall outside, utilize the interference factor in original space to put into the adjacent place of the base, make the precise position of each one after digit operation.



Simulation and operation of the environment

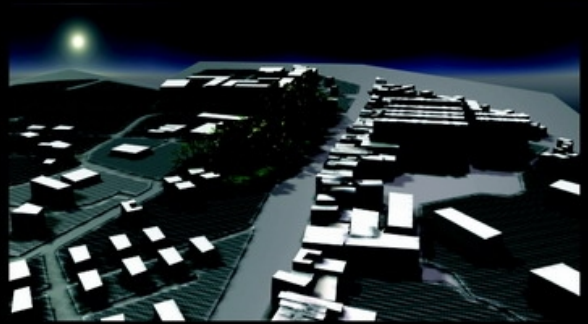
The relation pictures of the building amount body and surrounding environment formed, is really a very big quantity body, but clear heavy east institute already existing number too much too enough luxuriant, so in change trees turn on and join base with the wall outside, and resume east institute's originally auspicious and quiet atmosphere. After calculating according to the volume rate and demand built, the base needs eight buildings, so utilize the interference factor in original space to put into the adjacent place of the base, make the precise position of each one after digit operation.

MAYA VIEW

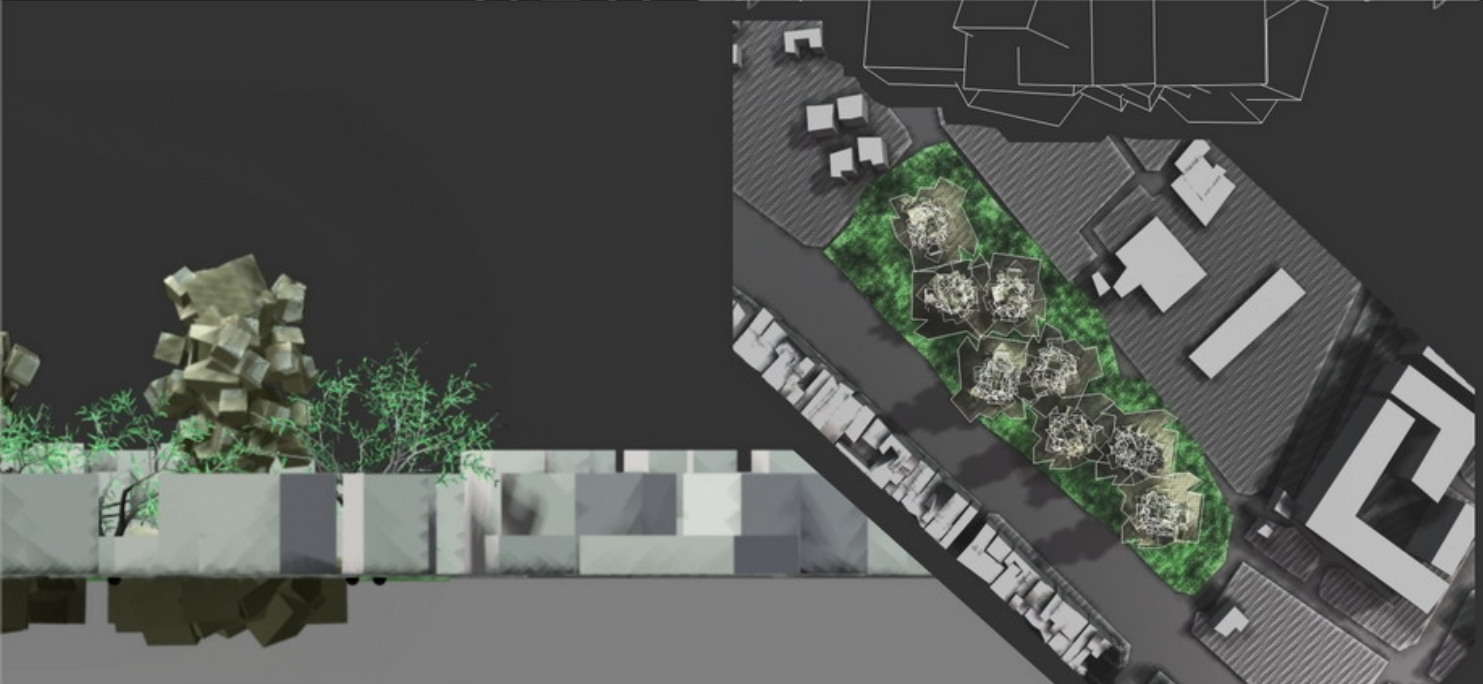


The whole characteristic is with design transforming

The building interface in the city , usually regard road as the element separated , but utilizing computer clustering amount body after imitating will not react among the real cities directly, must through designer one's own transformation again, person who make body can seem lofty of the city. If enable the building to press close to the cities even morning , must watch in terms of city , the evolution rule of utilizing the city to form puts into the new simulation way and can just reach the body space of more proper quantity again as the basis.



- 1 Family program
- 2 Site disturbance
- 3 Environment elevation
- 4 Site model
- 5 Night simulation
- 6 Elevation



01 ENVIRONMENT

Photo transformation
Light casting
Apartment building

02 MOVEMENT

Tangle motion
Childbirth
Apparatus

03 CREATION

Robert Smithson
Mozart
Mrs. Wang

04 BUILDING

Indivisible
Renaissance

05 URBAN

New and old
Back land
Backdrop

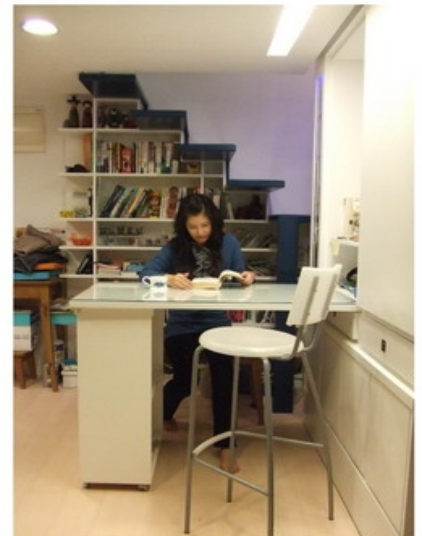
Tangle motion



Childbirth



Apparatus



動作的描繪與空間形式塑造

動作的線索轉化，在探討人體運動過程中所產生的空間關係，首先記錄了探戈的舞蹈過程，並將兩人的互動與軌跡做關聯性的分析，並透過虛實關係表現出動作的力量。而虛實空間在分娩的動作上更能被表現的完整，所以接著分析分娩過程的各種關係，如疼痛，聲音，位置。透過這些來了解動作的線索轉化所形成的空間關係。第三階段則是利用動作的分析結果和組構關係結合在一間小房間中，紀錄與用者的習慣動作，和移動關係，創作出屬於使用者的動作空間形式。而透過對動作線索的描繪，可以簡單地組構出人體工學上與空間的形式塑造。

動作的線索轉化

The description of movements and moldings

The clue of movements is transformed, the spatial relationship produced in the course of probing into the human motion, have written down the dance course of the tango at first, and make related analysis of inter-dynamic and orbit between two people, and display and set out the strength done through the actual situation relation. And the fullness that the actual situation space can be displayed on movements of giving a birth, so continue analyzing that gives birth to various kinds of relations of the course, such as the pain, the sound, the position. Understand through these that the clue of movements transform the spatial relationship formed. The third stage utilizes the analysis result and group of movements to construct the relation and combine in a cubicle, habit movements of the persons who note down and use, and move the relation, create out the movement space form which belongs to the user. And through to description, movement of clue, can group is it happen human engineering go to form in space mould to construct briefly.

TANGLE MOTION IAN STUDIO
TOOLS MOVIES
MATERIALS PAPER & FONTCORE
REFERENCES TANGLE LESSON
2005 FALL NCTU

CHILDBIRTH EAGER STUDIO
TOOLS CIRCULAR SAW
MATERIALS WOODS
REFERENCES CHILDBIRTH
2005 FALL NCTU

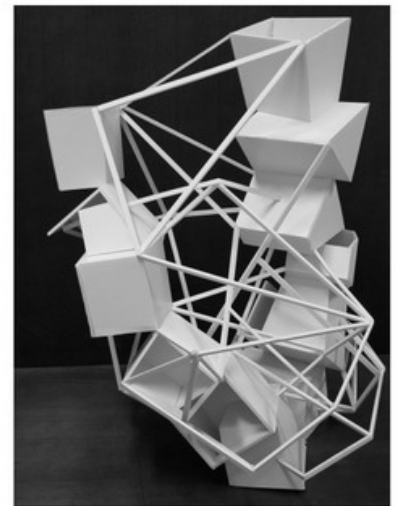
APPARATUS F1 STUDIO
SITE TAIPEI PAI TAU
USER MAN
2007 SPRING TAIPEI



TANGLE MOTION

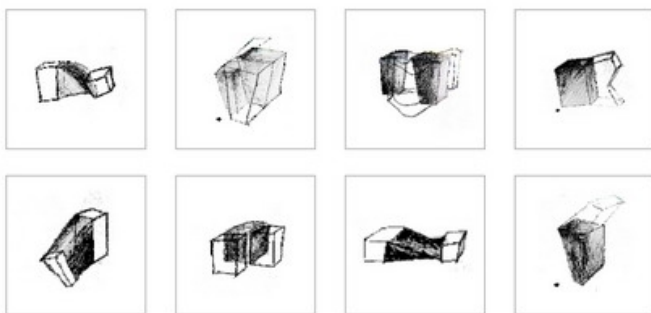
Analysis of the fuzzy space

To black and fuzzy analysis of relation in vain in succession, is it utilize tango dance discuss fuzzy relation of space to try. The sound relation between two people is representing the balance and uneven fuzzy relation in the tango dance, and can only find out movements stopped in the twinkling of an eye, can not express a succession of movements and balanced relation in a photo. So utilize the dance course of section for one sharp as the source of the materials, and disassemble movements in the dance, is it moves to be real relation, is it commit last space model to combine all movement strength finally to transform.



Twisting points of the body

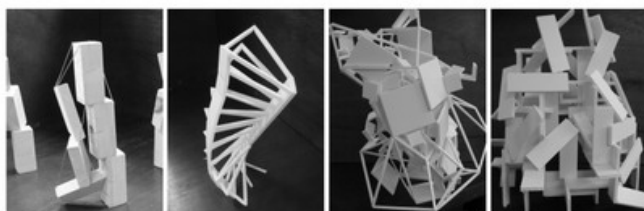
The relation between the two movement can be divided into several kinds, including sprain , move , interlock , rotate , drag , rotate , move , exchange by mistake. Transformed into the lines in the space model in the strength between two relations that people affect each other, the body is transformed into the quantity in the space body, and the space between two people has four ways including depending on each other, the body is moved in different directions, there is a more complicated dance step each.



- 1 The tangle motion
- 2 Point analysis
- 3 Process models
- 4 Space model
- 5 Section stack model

The material makes with the shape of the mold

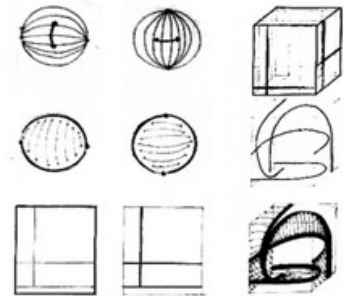
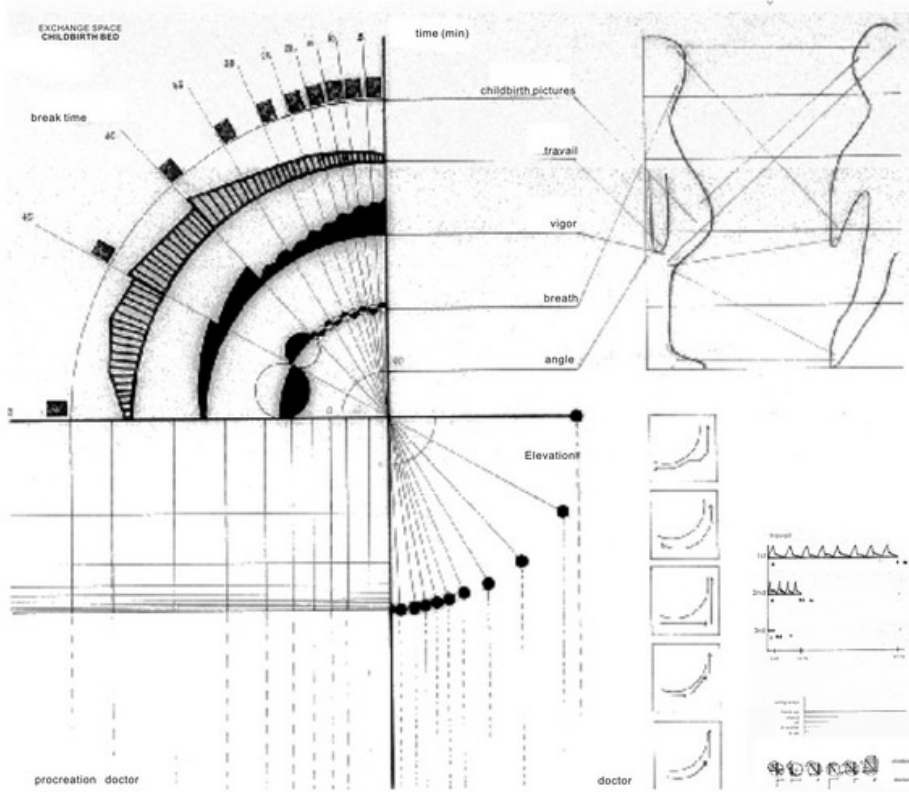
Demonstrate the relation among various kinds of movements with different model materials after synthesizing the analysis of the above, and utilize standard movements of the tango to discuss the relation of the actual situation sound as the sample that is made, behave quiet part with entity finally, part that move with timid to display in the middle of sound obvious definition in timid to wear real space already.



CHILDBIRTH

Space exchange of childbirth

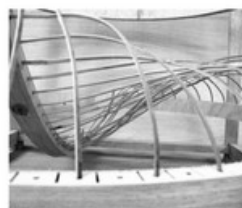
After analyzing the inter-reaction between two people, can understand tango one obvious two people relation, want operate one two people relation that steamed bun paste even more next, the spatial relationship produced during the process of giving a birth between mother and child. So continue probing into and giving birth to the course entirely first, there will be different responses that will appear in the course, for instance the pain, the pain, the amniotic fluid is broken etc., all these are projects that can be written down and observing. It gives a birth to be complicated thing very much, so is making use of the lying-in woman's production diary of studying, and come to write down very complicated relation between these from the adjective, and know that the whole course is the fuzzy space that two people exchange information continuously. And such information has become the key that derives and can form the space key element to the response people's emotion while coming out of designing.



- 1 Childbirth diagram
- 2 Sphere model
- 3 Detail of model
- 4 Framework model

Make fuzzy space model

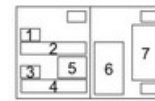
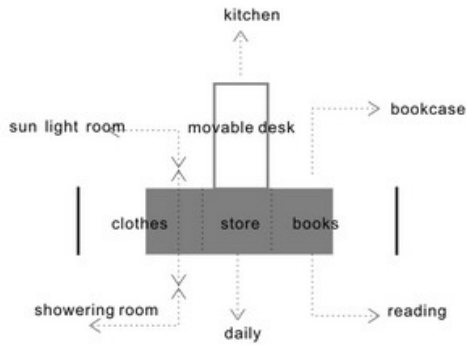
Utilize two different ones to express two people's activity space to degree. Transform group the space entity's model to construct at first, representing the space giving a birth exchanges the course. The space model is divided into two kinds, and utilizes timber as the material. One to plant thin shell structure of composition with scene, can it be open and shut to rotate, another kind to regard bamboo article as space of the curved surface weave. The junction does not all use the nail, but let the space utilize the characteristic of the material itself to support the whole space model.



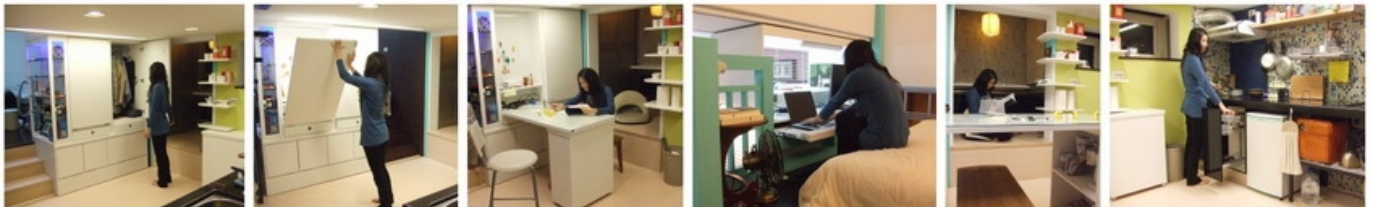
APPARATUS

Change the occupation mode of the space

Peitou one light suite, hot spring of district one tea art house inhabited space in the past, change into a person of salariat now, like staying at home and studying at ordinary times, cooks. Because space is it get used to with him totally different to design, is it stands up to be in disorder feeling nearly all to live. There are a lot of shortcomings in house space, if the function of the furniture is indeterminate, the space tone is too obscure, move in disorder line, insufficient privacy have, space too lonely balcony have, make the integrated environment produce and lack the angle. The combining suggestion is to utilize the central point to regard as center so most, design and is located in the central stair of two pieces of drop space, and make the central cupboard body can be moved, produce many more kinds of modes of combination.

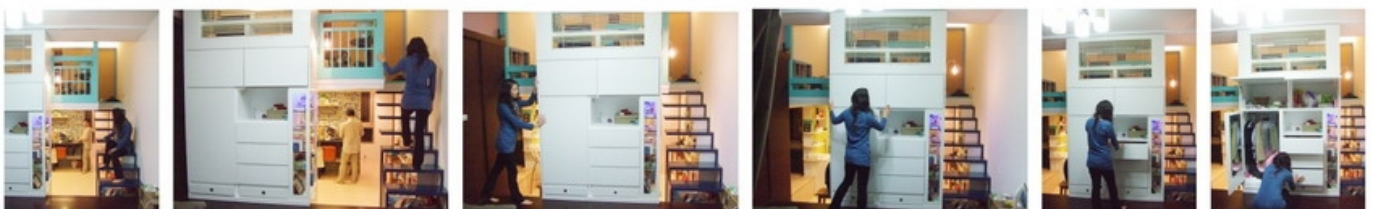
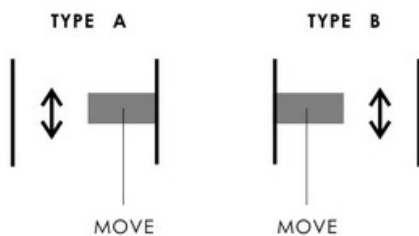


- 1 Space concept diagram
- 2 Action program
- 3 Movable box diagram
- 4 Moving program
- 5 Kitchen
- 6 Small space
- 7 Plan



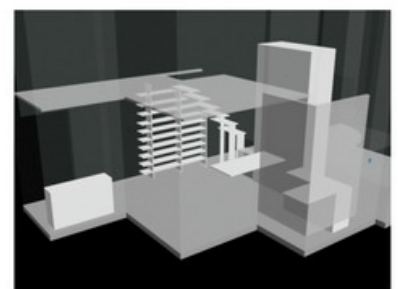
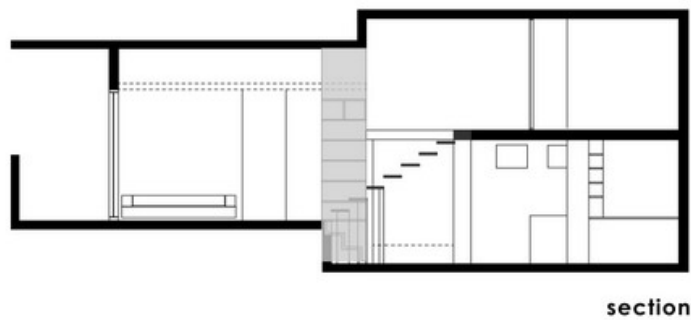
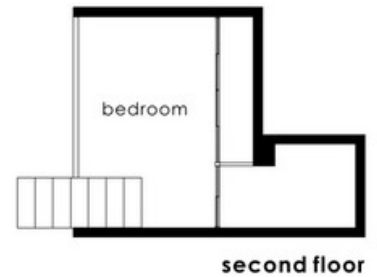
Transition of the center space

Reconstruct the goal in order to put in order the furniture mainly, enable all machines to appear clearly, one indeterminate furniture at present no longer, and function of space, and let the space use more efficient. The ones that utilized and moved stored the space and creating new moving the line, and the effective one creates the new private dense space. Cumbersome one stair originally simplify the spaces last steps cantilever, below for book case not comprehensive and conformed with the not storing space of size of.



The extension of the kitchen is transformed

The cupboard is removed to flow and pay attention to the platform, the space appears directly above making, and adjust the space tone, let some joyful colors be entered, make space full of activity senses. Continue to use the already existing electromagnetism stove and match the bright color pearl mosaic of wall, extend to the balcony space and stay to put a foreign space, in balcony make sofa space, can let people low flat by window , relax mood, read. The space matches colors the respects were all painted white basically, utilized a little more pure color walls, guide the space main shaft.



01 ENVIRONMENT

Photo transformation
Light casting
Apartment building

02 MOVEMENT

Tangle motion
Childbirth
Apparatus

03 CREATION

Robert Smithson
Mozart
Mrs. Wang

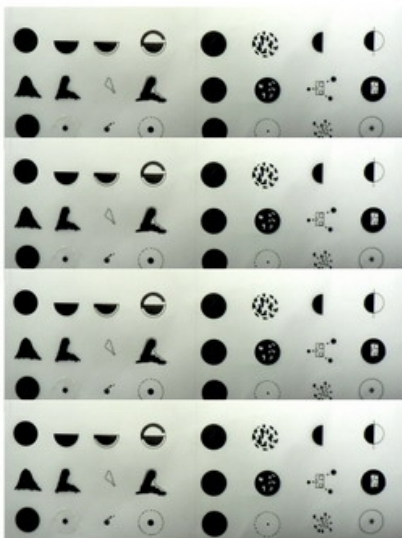
04 BUILDING

Indivisible
Renaissance

05 URBAN

New and old
Back land
Backdrop

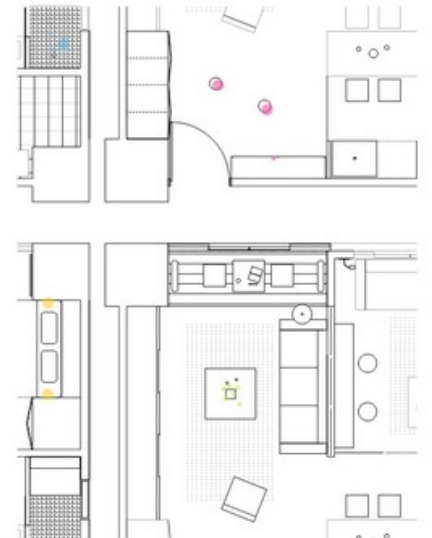
Robert smithson



Mozart



Mrs. Wang



由分析法則創造抽象空間

創作的線索轉化，在探討每個人內心所渴望的空間想像，企圖透過分析使用者的創作品來了解使用者所要的空間機能，環境關係。首先分析一位大地藝術家 Robert Smithson 的創作品，並分析記錄他的概念，而後反應到建築空間中。第二階段則是分析 Mozart 的音樂，並將他的音樂概念轉化到建築中，構成音樂教室。第三階段則是利用分析的手法，讓使用者開始作一個屬於他自己的創作品，並且透過這個創作品來了解他所想要的空間形式。而這些由概念線索出發的轉化方式，可以較真實的反應出使用者抽象地空間想像。

創作的線索轉化

Analyzed that the rule creates the abstract space

The clue of the concept is transformed, is probing into the space wished eagerly of everybody's heart to imagine, attempt to understand user's space function taken through analyzing the user's creation product, environmental relation. Analyze a person of earth artist Robert Smithson's creation product at first, and analyze that writes down his concept, and then react to the building space. The second stage is the music which analyzes Mozart, and transforms his music concept to the building, form the music classroom. The third stage utilizes the tactics analyzed, let users begin to do one and belong to his own creation product, and understand the space form that he want through this product of creating. And these are by transformation way that concept clue set out, can be truer to reflect users the space is imagined abstractly.

ROBERT SMITHSON NANCY STUDIO
SITE FU DE KAN DUMPING GROUND
CASE STUDY ROBERT'S WORK
2006 SPRING NCTU

MOZART NANCY STUDIO
SITE H.S.-BUILDING ONE
CASE STUDY MOZART MUSIC
2006 SPRING NCTU & THU

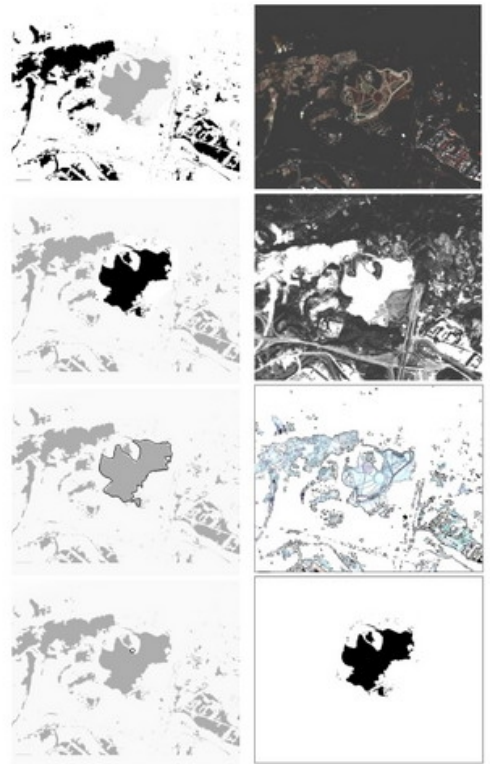
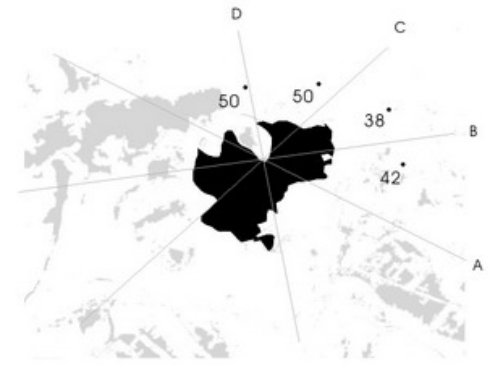
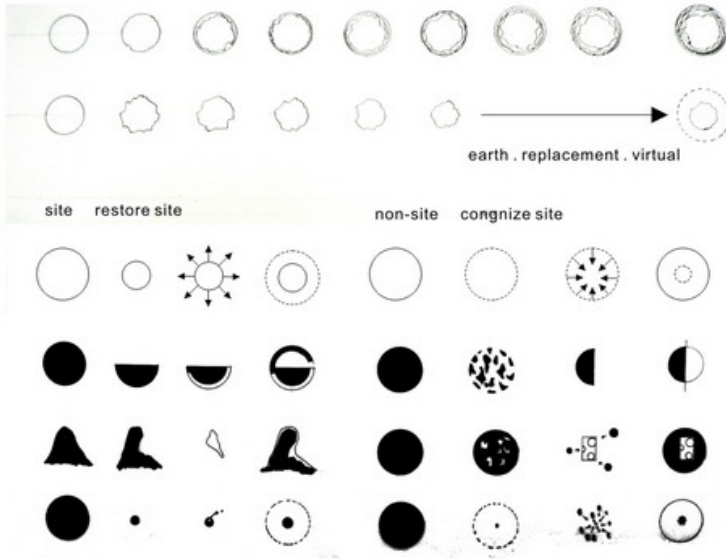
Mrs. Wang F1 STUDIO
SITE TAIPEI
USER MAN & WIFE
2006 SUMMER TAIPEI



ROBERT SMITHSON

Design the annotation explanatory note and use again of the concept

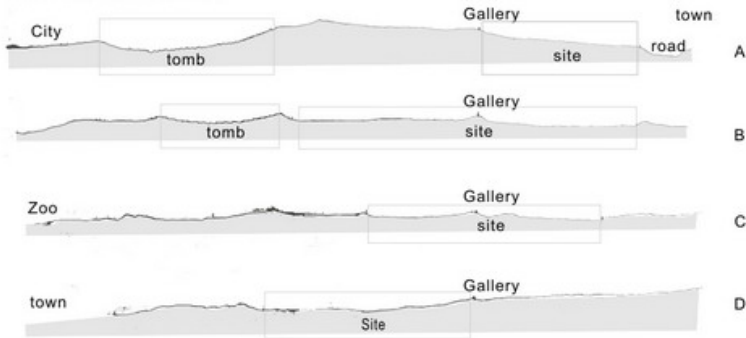
Regard design concept of the artistic work as starting point that explore, is it clear we own thinking unanimous artist on one's body in one logic to invest, but not we come to do any movement. And this artist is the earth artist Robert Smithson. Clear careful artist on one's body, every movement to have reason again in such an idea, every idea is to contact according to the same thinking. Want can have level very much one, have ambiguous space very, it is one that can discuss whole space of idea clearly.



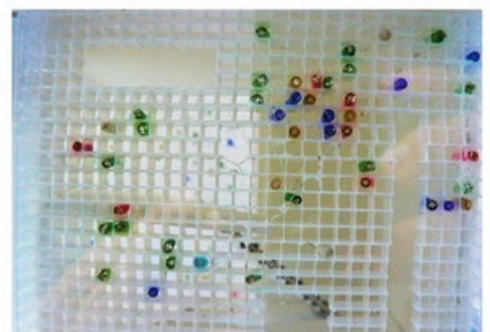
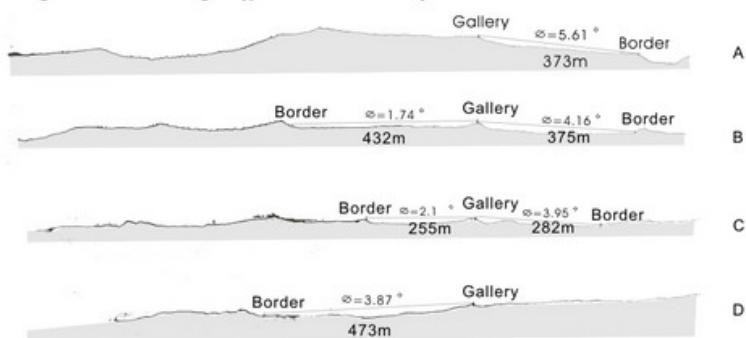
Base information and spatial relationship

According to design idea in the front offer, look for some can utilize into information among base, and such information must have something to do with earth, choose rubbish field combine as base record base all angle of things and from the relation, because the information is all to build the important information of constructing this whole base.

Site environment

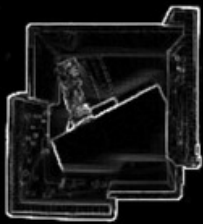
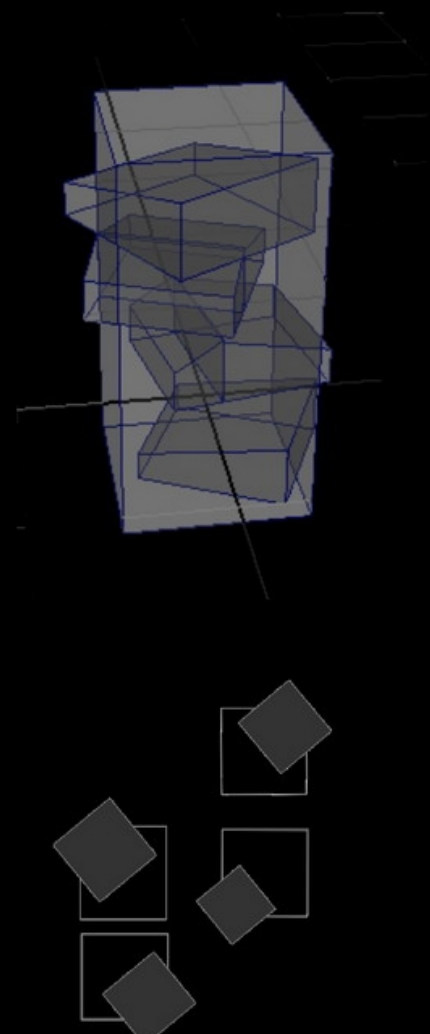
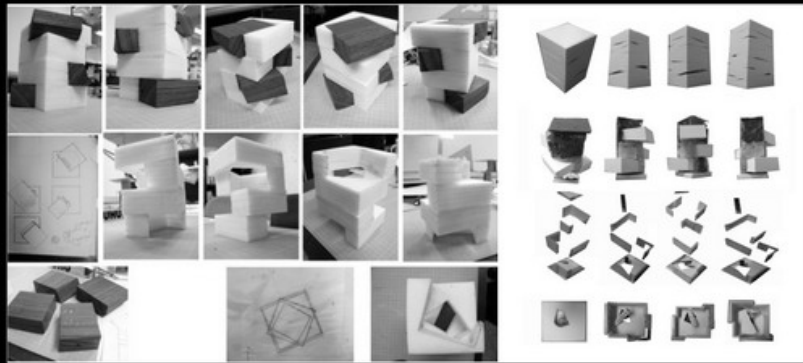


cognize site angle(plan§ion)

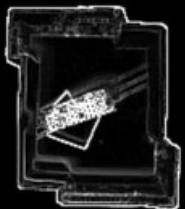


The operation of measuring the body changes

Utilize four direction angle and change of the height to make four pieces of quantity body, and then put these four pieces of quantity body into the space amount of 10mx10m in the body. Such a movement is through analyzing about the behavior of earth artist Smithson and creation concept that came out in fact, utilizing things conduct now to be created, even choice of the place must have been selected prudently, and the criterion selected must be the base ever destroyed. Then this base should be recovered, but does not restore to the original state simply, but the thing left after utilizing and destroying is as the material , try every possible means to fill out the things back to the base or cover on the base. The space dug up is explained as the empty space, the empty space formed can retrieve the offal now, retrieve the discarded bottle in every direction of the base, put the wall the specific direction, and build Robert Smithson Art Museum slowly.



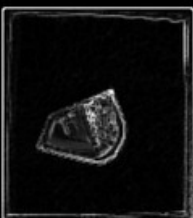
3F



2F



1F



B1



- 1 Working concept diagram
- 2 Site information
- 3 Site represent
- 4 Process model
- 5 3D combination
- 6 Plan
- 7 Building model



MOZART

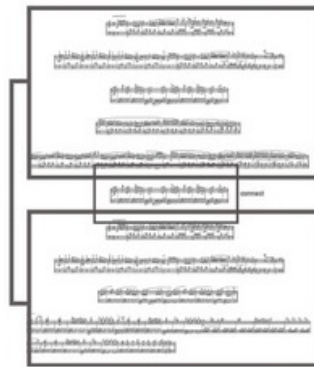
The music hall design with music

Assume your Department of Architecture (NCTU) is transform into a music school. The program is for kids between of 5 and 12. Your task is to design a Music Hall for this newly established program. A group of no more than 15 kids, playing instruments of your choice, will both practice and perform in this hall .At least one private practicing room is required .An office for instructors is also needed .Your site can be an addition to the school, modification of the existing school, or a newly constructed structure. Your hall can also be movable. The design should relate to its context by either being sympathetic to it or commenting upon it.

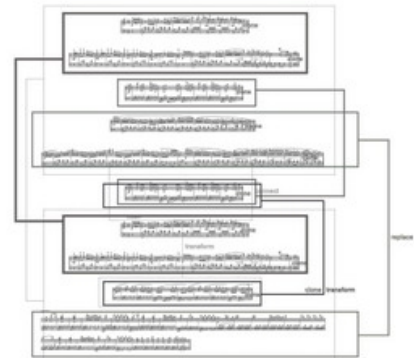
MOZART

Handwritten notes in Arabic script, likely detailing the design requirements and context for the music hall project.

Layer 1



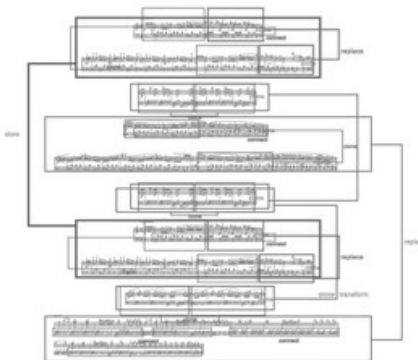
Layer 2



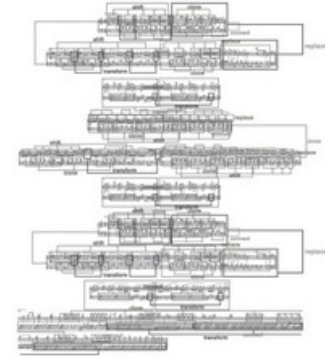
Layer 0



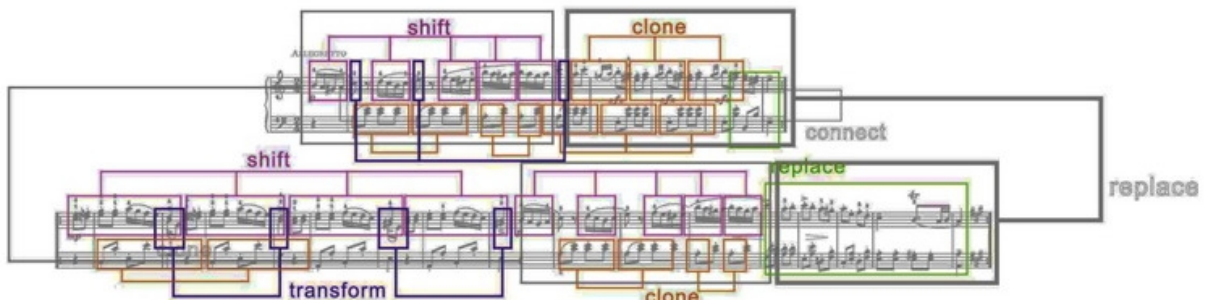
Layer 3



Layer 4



The important part

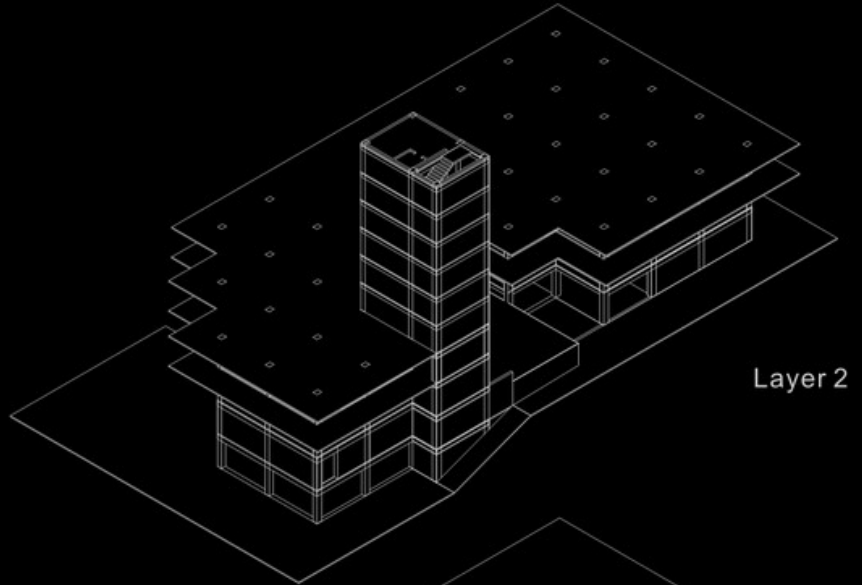




- 1 Mozart music analysis
- 2 Site information
- 3 Action of music
- 4 Old building explosion diagram

Analysis of the music and research of the space

According to analysis Mozart's Turkish march, find out and is duplicated, move by mistake, join, transform, or the relation that replace, and different levels all have these relations, and these relations are the most beautiful place of music. If the space can be as wonderful as music, so many a level relations is a very excellent space at that time. But will design a room of music classroom in the square old building of a mold, must let the beating integration of the music in the old building, the ones that have already had are transformed and designed old and architectural.



music for kids

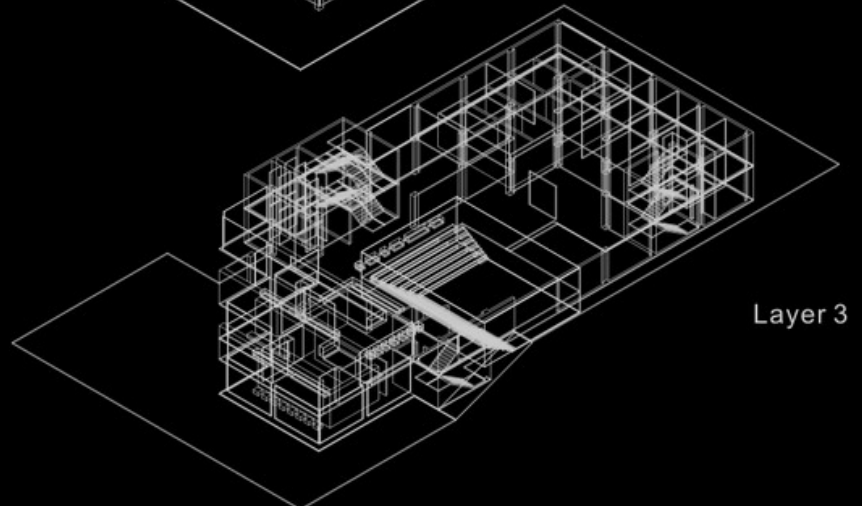
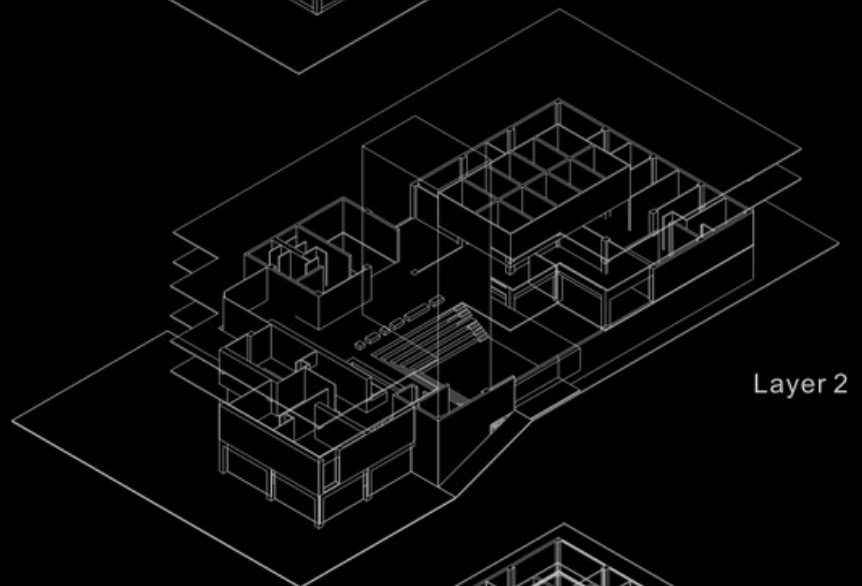
- clone — kid
- shift — group
- connect — team
- transform — teacher
- replace — parent

music for school

- clone — personal practice
- shift — lecture hall
- connect — stair
- transform — rest room
- replace — arrangement

music for structure

- clone — column
- shift — wall
- connect — plank
- transform — passage
- replace — window

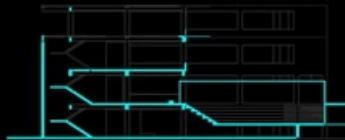


Pile of the music and space is shut

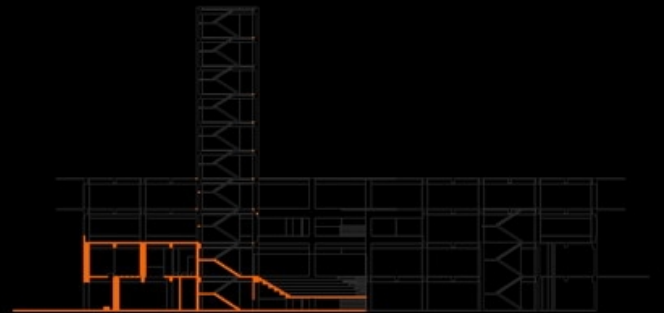
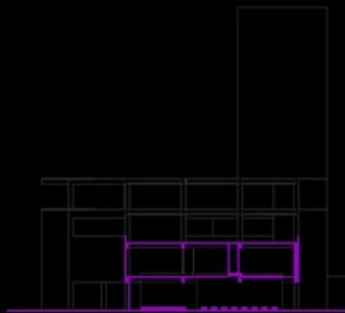
Through studying the old building space first, find that usually all mold square space in the modern architecture, just as the music has differentiation of the small matter , but the lying in there are notes of different changes in every small matter differently of music, so apply mechanically the music in the rule space , must begin to analyze from the section first , utilize layer of sectional relations , display various kinds of movement relation , note down then with analyze movement these music rule after pile equal to each other, form different sectional relations finally. And original using the function way exists in these some old space, but has not been concealed over by the rule of the music, pile making the music with easier rule instead is shut.

Elevation combination

clone



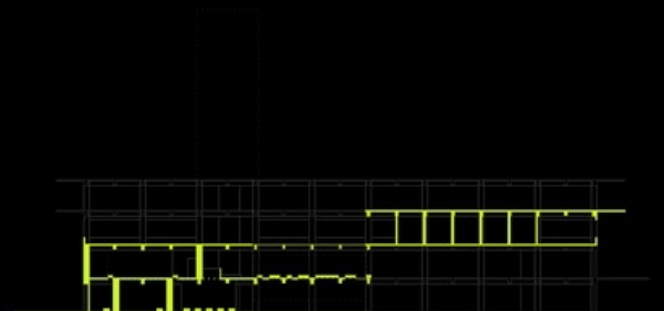
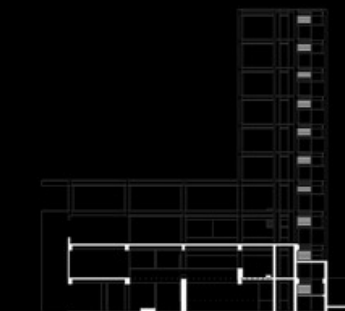
shift



connect



transform



replace

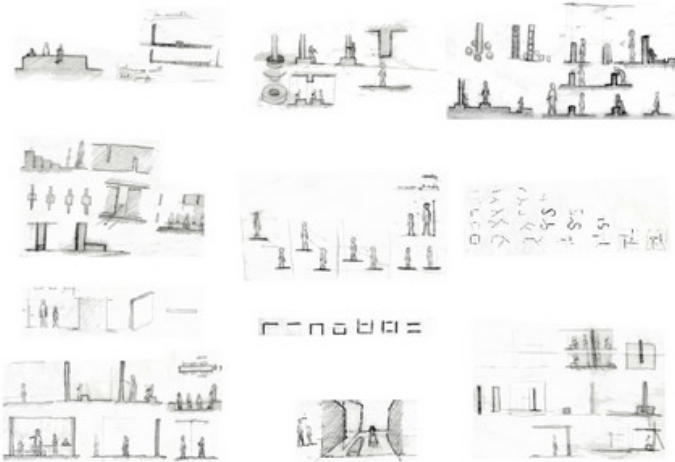


The concords of the space and function

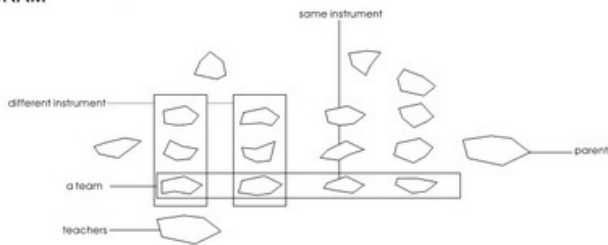
Movements after analyzing can be divided into five kinds, protect and draw together duplicating, move by mistake, join, transform, replace. And not only these five movements are applied to the building, but also react in teaching way, students are assigned as single teaching, many people's teaching, group's teaching, and then can work out into a music group. The function is to make use of relation of the level to make analysis, pass the operation with regular space, and will design and totally incorporate it in the rule of the music, the brisk and clear rhythm like the Turkish march, the ones that enabled children's music classroom to experience music while having a class not merely are beautiful, can experience the interesting place of the music from the space too.



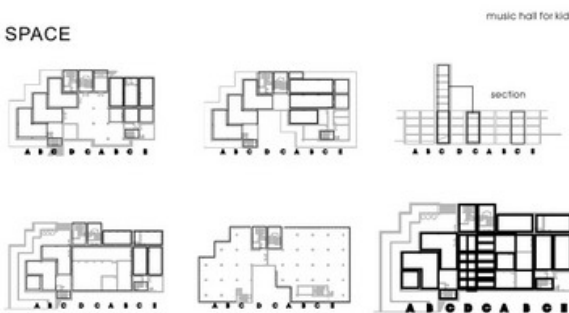
- 1 Building elevation diagram
- 2 Space relationship design
- 3 Program transformation
- 4 Building space
- 5 Detail space



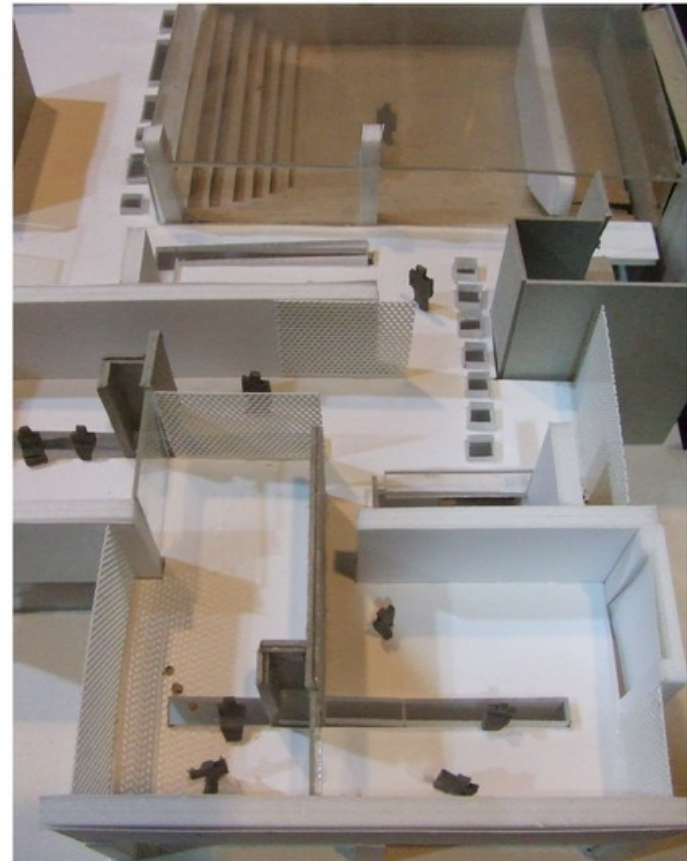
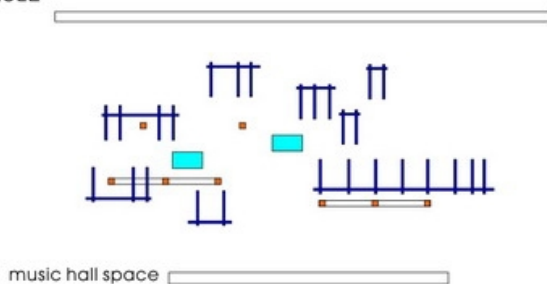
PROGRAM



BUILDING SPACE



SPACE RULE



Course which the group constructs

It is a very perfect annotation explanatory note again that the music is transformed into the course of the space element, pick and fetch a section of several small matter music that can represent whole first music at first, five kinds of movements analyzed before utilizing, duplicated, moved by mistake, join, transform, replace, disassemble the music, let the space in the music be shown. And then become these packages into lay out again, enable them to accord with some old building environments, passing the adjustment, for example move the line, the compartment, the adjustment of using the function to have, make some elements simplified or transformed, up to the space function, the structure of the building and combining for an organic whole by music-organic itself finally.

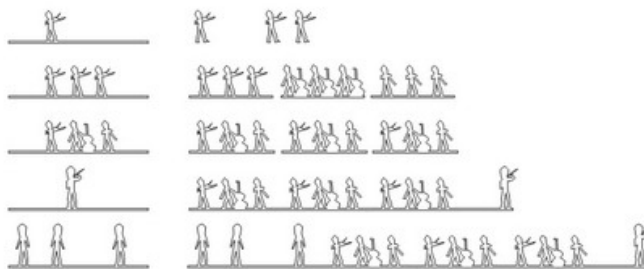
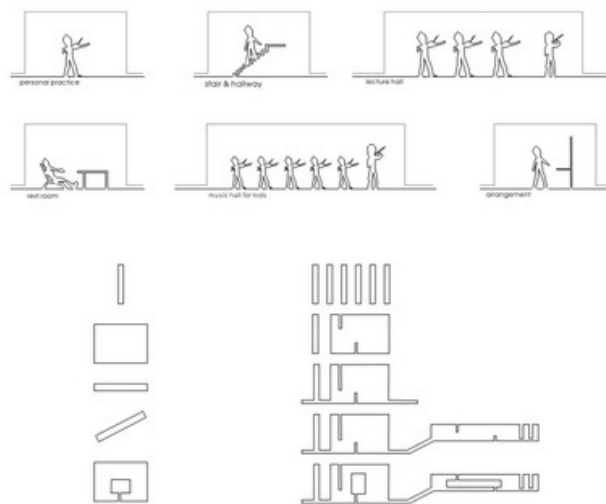
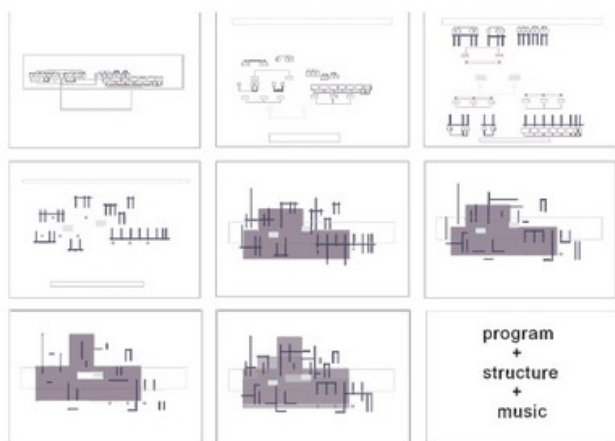


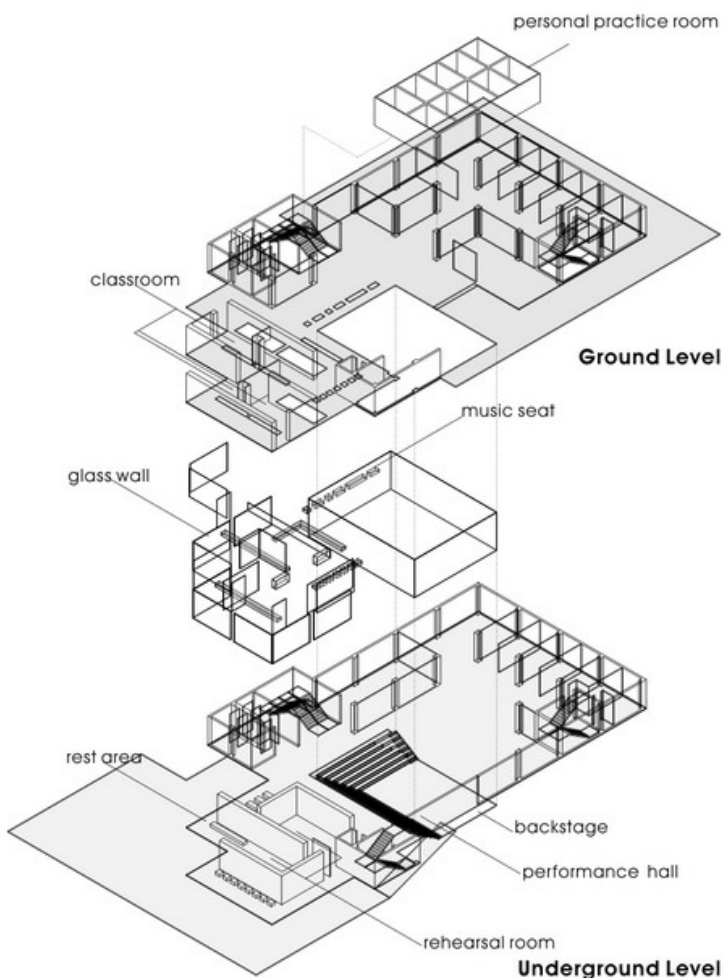
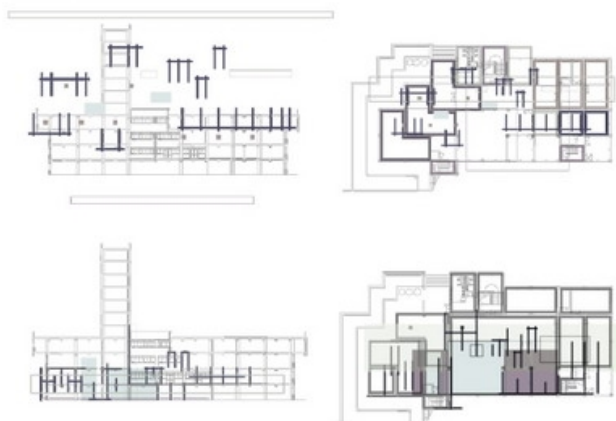
Diagram process (L TO R ,U TO D)



The occupation modes of the arrangement and function of the space

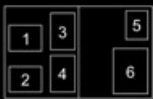
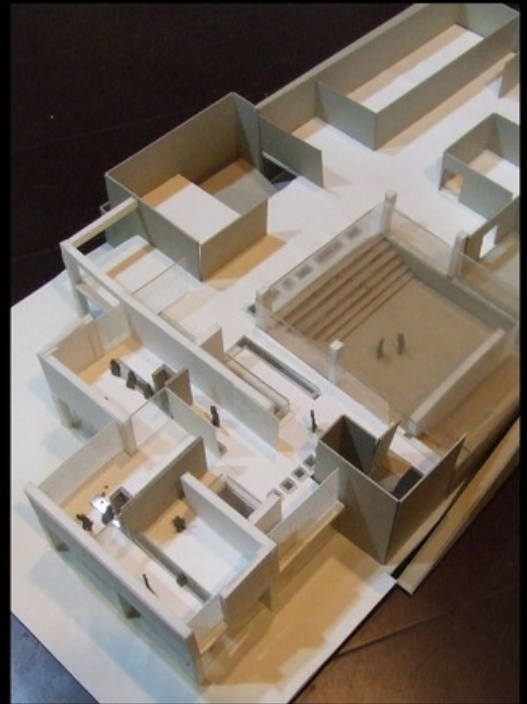
Utilize software of three-dimensional space to operate going on during the process of making up, hope that the level and section can all reach perfect control. Will duplicate elements and correspondent to the post system in the building first on the section, then make the adjustment slightly of other elements, for example transform elements and correspondent to separating the system of a wall, linking elements and just folding shutting with the stair, it is the lobby to replace elements. Pursue to look from the three-dimensional explosion, the middle is a performance field join the classroom and individual and practice the room all around, the lower floor is mainly the large comprehensive classroom, the upper strata rely mainly on categorized classroom.

Combination



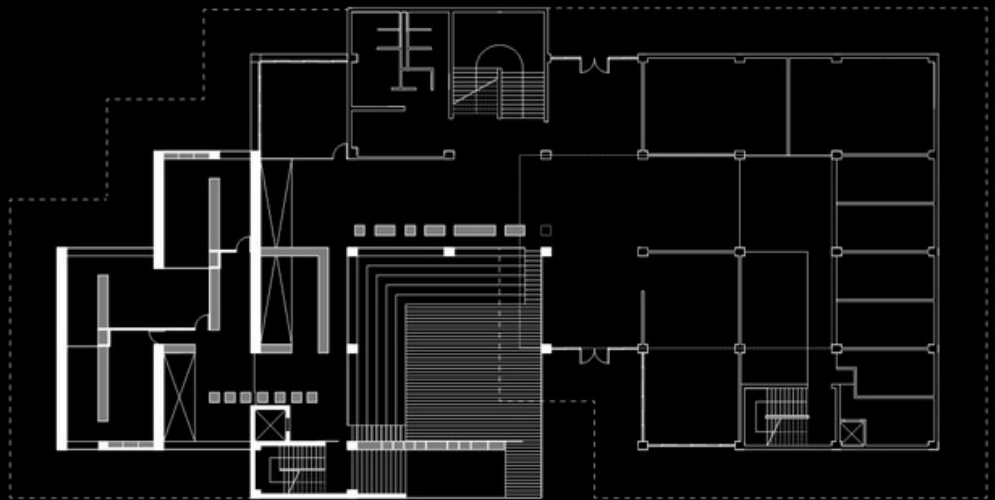
Disposition relation of the whole space

Have woven in the space of a lot of upper and lower connections on the whole space, mainly because this is a child's music classroom, the user will have children, the teacher has parents. Parents' space is to hope to observe children and not hinder from to the arrangement of having a class. So choose emptily in the space, enable the music to flow in the space directly, for not making the sound emitted in each classroom interfere, so there is difference of the block compartment on the space, and parents' seat lies between these blocks, can choose to hear or see children's situation of having a class.

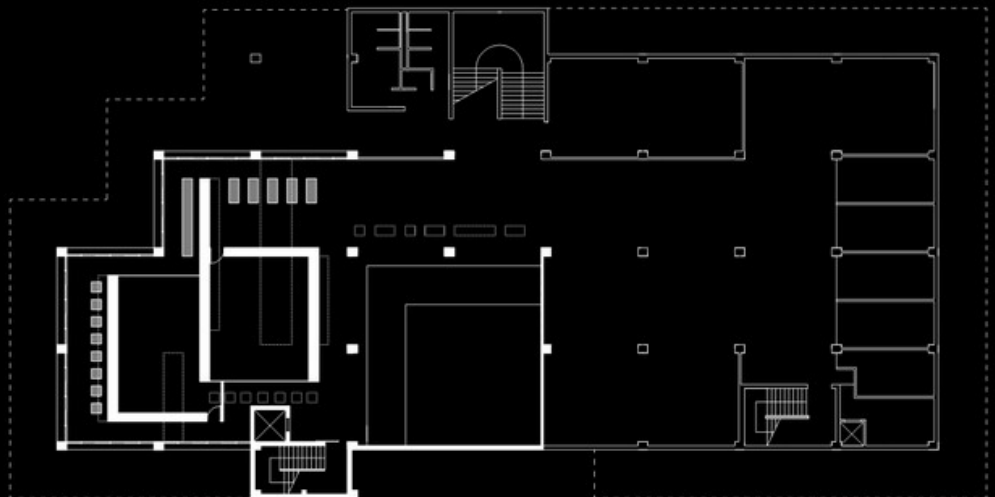


- 1 Transformation diagram
- 2 Combination diagram
- 3 Program analysis
- 4 Space explosion model
- 5 Program space
- 6 Plan

Ground Level



Underground Level



Mrs. WANG

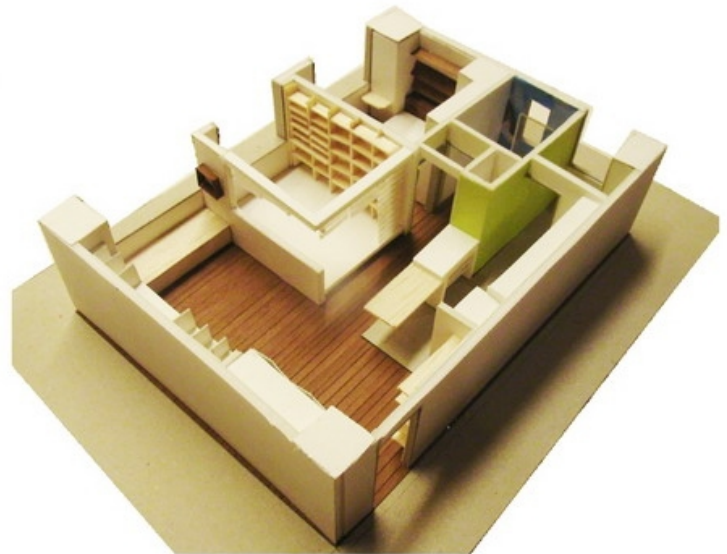
Find the clue in life

This works are talking about designing how to look for out some clues from the user's use habit and behavior of living, utilize clue these is it make appear outline of space to construct , is it reach space analyze to react a lot of material and then, form the space that the multiple material group constructs finally. Every group is purchased the relation and inspected and discussed, and put forward different ways of constructing, make every things have one's own a particularity of using.



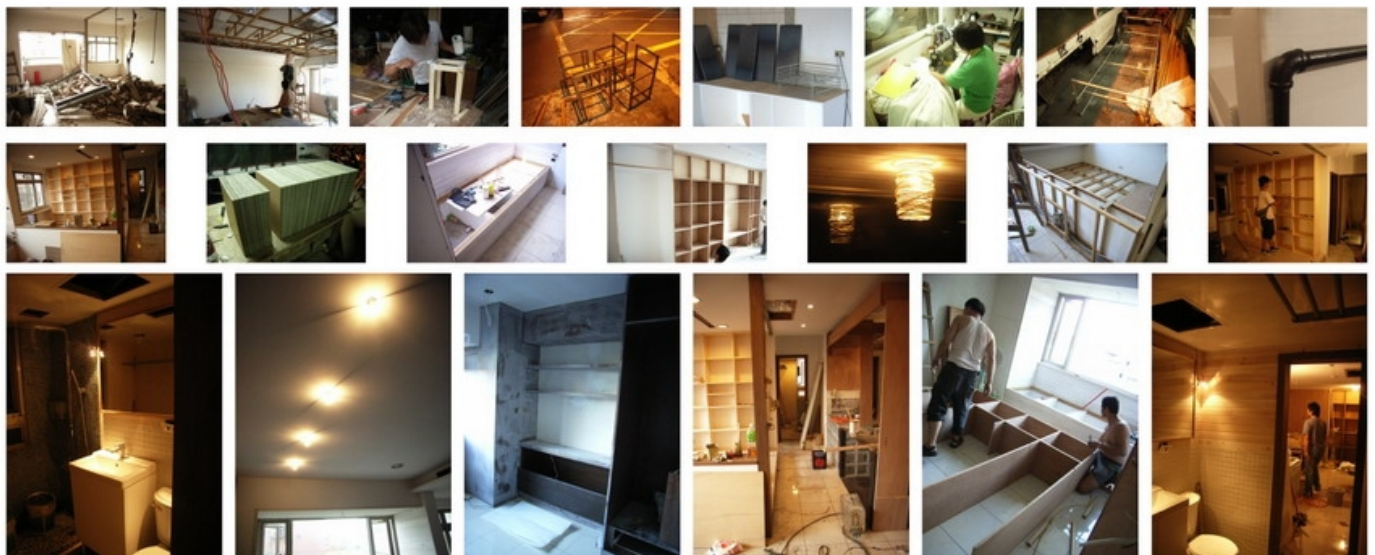
The design that is not restrained from is evolved

With a simple " questionnaire ", probing into user's aspiration in the heart of hearts, all color modeling is not by we or the main decision of undertaking, but get from the test. The information received of the questionnaire is some figures, itself is that the relation of utilizing quantization produces the quality result if design. And react in the use of the material , and represent the feel of the material itself , and the characteristic, for example the sofa is the structure assembled with the iron pipe car tooth, the kitchen all utilize the iron plate to form , attempt to want and is designed more and possible interpolation .



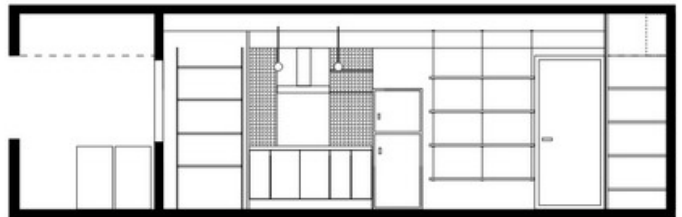
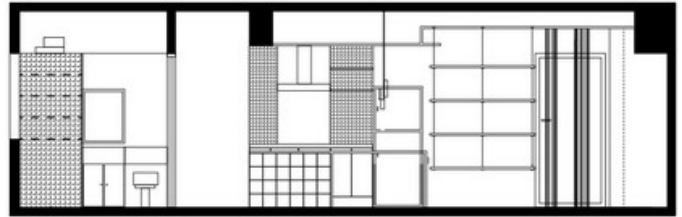
2	1	5	6
	3		
4			7

- 1 Programming space
- 2 Design furniture
- 3 Interior model
- 4 Working process
- 6 Plan
- 5 Kitchen
- 7 Living room



Association and operation of the space

The planning of the space can begin to extend from the restaurant, utilize the black iron plate to reflect and form an axis to both sides, even meal chair utilizes the square iron pipe iron to weld making. Vertical direction day lighting, pass many kinds of different window shades in the multi-level glass space, including cloth curtain, bamboo screen or curtain, twist the glass, make the space sheltered from through the light and the district to some extent. The space and kitchen of the restaurant are connected the extension tabletop of the dining table together, and move the water trough in the kitchen to, let the kitchen space have more spacious cooking mesa , occupation mode and refrigerator, gas range, water trough forms the most efficient triangular working environment .



The space program changes the relation

The most important space should be the living room , is it link taking in cup boarding integrative with TV to have in living room , utilize cloth curtain storage space cover up, depending on extending the balcony nearby, the foggy curtain of Rome of one of the window, offer users to change space nature wantonly . Sitting room and not between study last the walls it make to district through, and join there aren't sun blind, can make the study space totally separate with the doing area of sitting room , can only see that can not hear too.

