



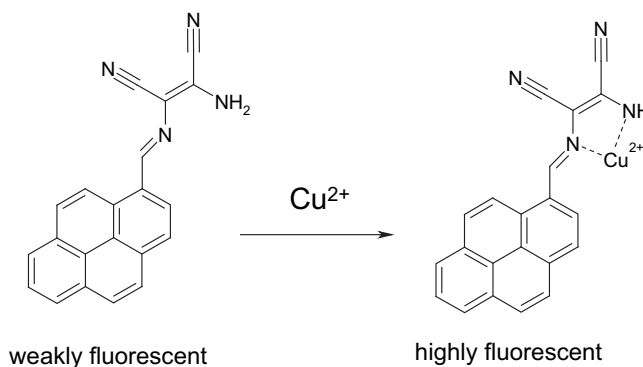
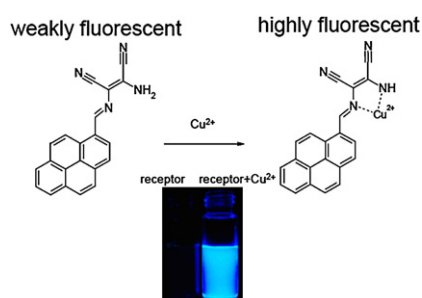
Corrigendum

Corrigendum to 'A highly selective turn-on fluorescent chemosensor for copper(II) ion' [Tetrahedron 66 (51) (2010) 9655–9658]

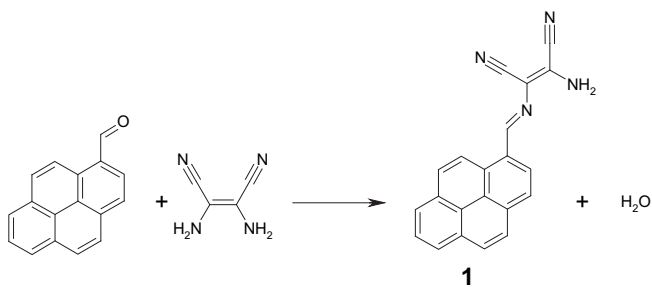
Shu-Pao Wu*, Tzu-Hao Wang, Shi-Rong Liu

Department of Applied Chemistry, National Chiao Tung University, Hsinchu, Taiwan 300, Republic of China

The authors regret there are some errors in their Graphical abstract, Scheme 1 and Fig. 7. The correct ones can be seen below.

Fig. 7. A proposed 1:1 complex formed between **1** and Cu^{2+} .

The authors would like to apologise for any inconvenience this may have caused to the authors of this article and readers of the journal.

Scheme 1. Synthesis of chemosensor **1**.

DOI of original article: 10.1016/j.tet.2010.10.054.

* Corresponding author. Tel.: +886 3 5712121x56506; fax: +886 3 5723764; e-mail address: spwu@mail.nctu.edu.tw (S.-P. Wu).